



## State Revolving Fund Loan Programs Drinking Water, Clean Water, Nonpoint Source

### PRELIMINARY DECISION OF CATEGORICAL EXCLUSION

TO ALL INTERESTED CITIZENS, ORGANIZATIONS AND GOVERNMENT AGENCIES:

#### **TURKEY CREEK REGIONAL SEWER DISTRICT DRINKING WATER IMPROVEMENT PROJECT SRF Project DW 24 71 43 00**

**Date: April 6, 2026**

Pursuant to IC 5-1.2-3, the Drinking Water State Revolving Fund (SRF) Loan Program has determined that the project described here and in the Turkey Creek Regional Sewer District's Preliminary Engineering Report will have no substantial negative environmental impact. Therefore, the SRF is issuing a preliminary decision of Categorical Exclusion (CE) from the requirements of substantive environmental review.

*How were environmental issues considered?*

The National Environmental Policy Act requires agencies disbursing Federal funds to include environmental factors in the decision-making process. A summary of the project is attached for your review. The SRF's preliminary review has found that the proposed project does not require the preparation of either an Environmental Assessment or an Environmental Impact Statement.

*Why is additional environmental review not required?*

Our environmental review has concluded that significant environmental impacts will not result from the proposed action. In the absence of significant comments, the attached CE shall serve as the final environmental document.

*How do I submit comments?*

Comments can be submitted to:

State Revolving Fund  
100 N. Senate Ave., IGCN 1275  
Indianapolis, IN 46204  
[publiccomments@ifa.in.gov](mailto:publiccomments@ifa.in.gov)

---

# CATEGORICAL EXCLUSION

---

## I. PROJECT IDENTIFICATION

Project Name and Address:                    Drinking Water Utility Improvements  
   Turkey Creek Regional Sewer District (RSD)  
   4852 N. 1200 West  
   Cromwell, IN Zip

SRF Project Number:                         **DW 24 71 43 00**

Authorized Representative:                 Timothy Woodward, Superintendent

## II. PROJECT LOCATION

The proposed project is located in Kosciusko County, Turkey Creek Civil Township, Lake Wawasee 24k USGS Quadrangle, Township 34 North, Range 7 East, and Section 9. See **Figure 1**.

## III. PROJECT PURPOSE AND NEED

Poor water quality, low water pressure, crossflow, and backflow conditions are some of the issues that residents of this community are experiencing. Management of water quality and water age within the distribution system is inadequate because the system lacks an appropriate number of hydrants for flushing. Inoperable valves and asbestos cement water mains, which present a health hazard to maintenance workers, make maintenance and repairs difficult. Lack of water metering in the distribution system makes tracking water losses and revenue problematic. The proposed project will improve water pressure and quality for customers. Additionally, it will reduce the health risks to workers and improve management of the water system.

To correct these problems, the proposed project includes:

- Replacement of all water mains within the Fascination Place MHP, including approximately 6100 LF of 6-in water main, approximately 4,050 LF of 8-in water main, approximately 1,100 LF of 12-in water main, approximately 20 valves, approximately 10 hydrants, and appurtenances.
- Installation of all new water services from main to meter pit in the Fascination Place MHP, including approximately 192 service lines, meters, meter pits, and appurtenances.
- Installation of approximately 50 water meters, meter pits, and appurtenances in the Enchanted Hills neighborhood and distribution system areas outside of the Fascination Place MHP.
- Site restoration, including repair and/or replacement of sewer laterals that are affected by the proposed drinking water project.
- An audio-video recording system, for documentation only.
- Installation of a back-up generator, automatic transfer switch, instrumentation and controls, and appurtenances at the water treatment plant.
- Engineering services for the Enchanted Hills new well project.

#### **IV. ESTIMATED PROJECT COSTS, AFFORDABILITY, AND FUNDING**

The total cost of this project is estimated to be approximately \$5,540,000. Turkey Creek RSD intends to finance the project with a loan from the Drinking Water SRF Loan Program for a term and annual fixed interest rate to be determined at loan closing. Monthly user rates and charges may need to be analyzed to determine if adjustments are required for loan repayment.

#### **V. ENVIRONMENTAL IMPACTS OF THE FEASIBLE ALTERNATIVES**

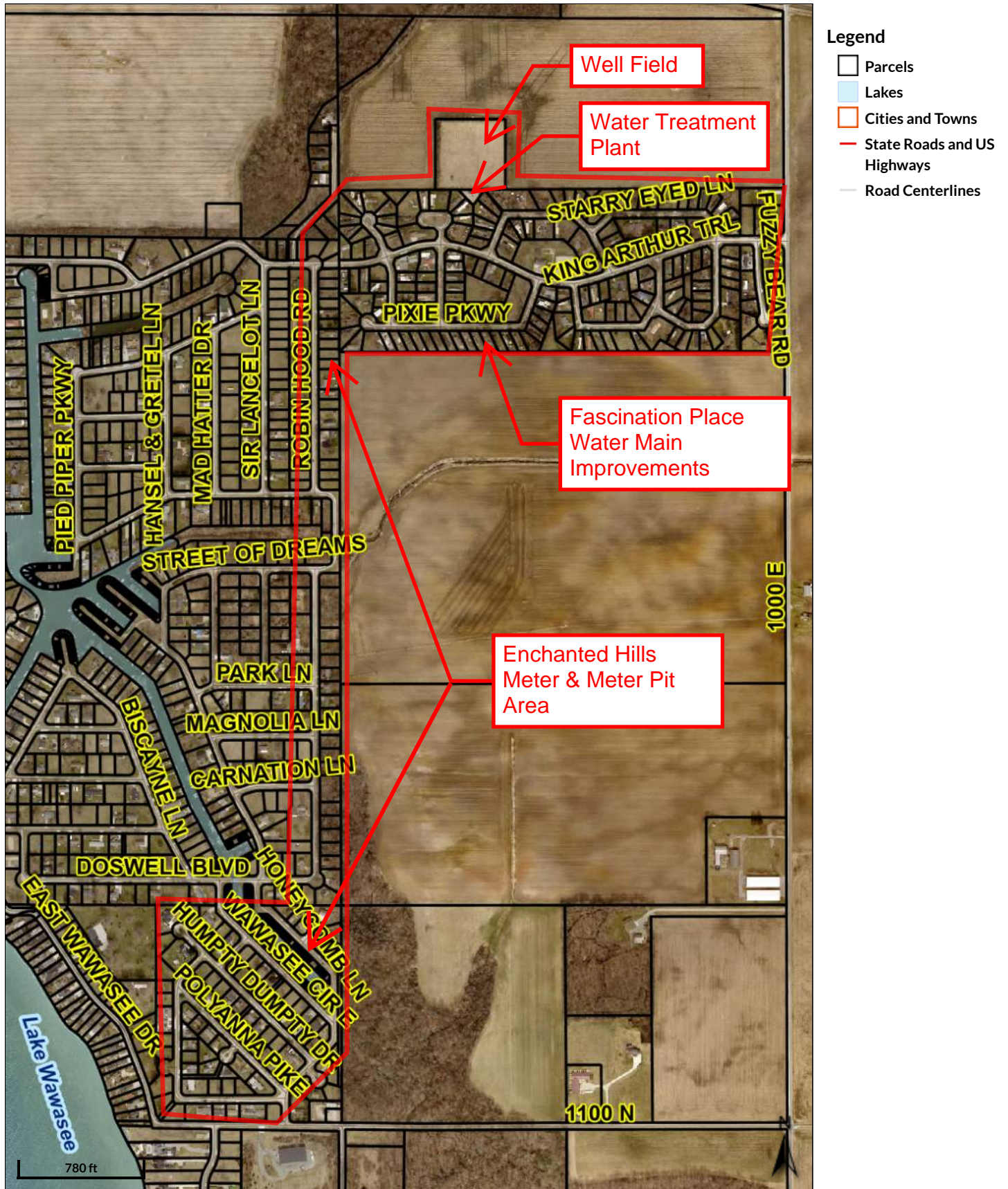
The environmental impacts will be minimal. All project activities will take place in areas previously disturbed by existing utilities. The proposed project will not affect streams, floodplains, wetlands, wooded areas, or other sensitive environmental resources and will not convert prime farmland.

Construction and operation of the project will not alter, demolish or remove historic properties. If any visual or audible impacts to historic properties occur, they will be temporary and will not alter the characteristics that qualify such properties for inclusion in or eligibility for the National Register of Historic Places. The SRF's finding pursuant to Section 106 of the National Preservation Act is: "no historic properties affected."

#### **VI. PUBLIC PARTICIPATION**

A properly noticed public hearing was held on April 21, 2025, at 6:30 pm at Turkey Creek RSD's office located at 4852 N 1200 W, Cromwell, IN 46732. There were no questions on this project during the hearing. No written comments were received in the 5-day period following the hearing for this project.

# TCRSD Water Area



Water Surface Areas  
Figure 1