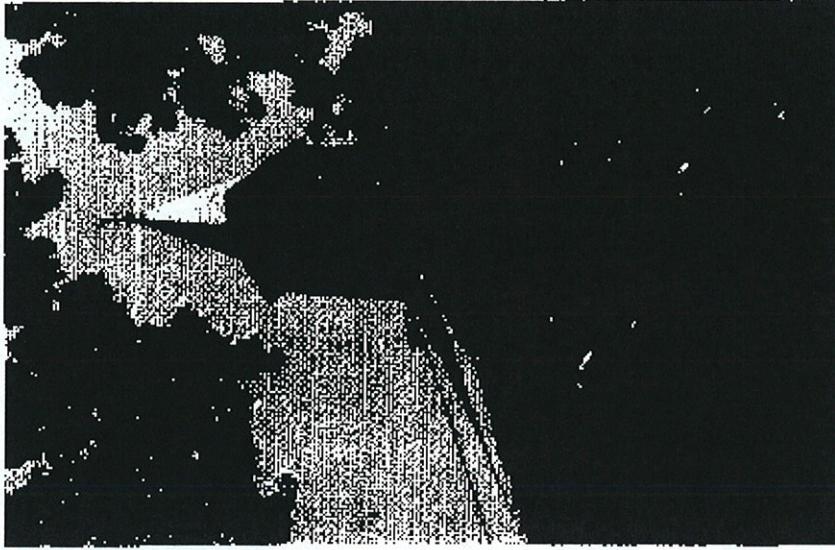
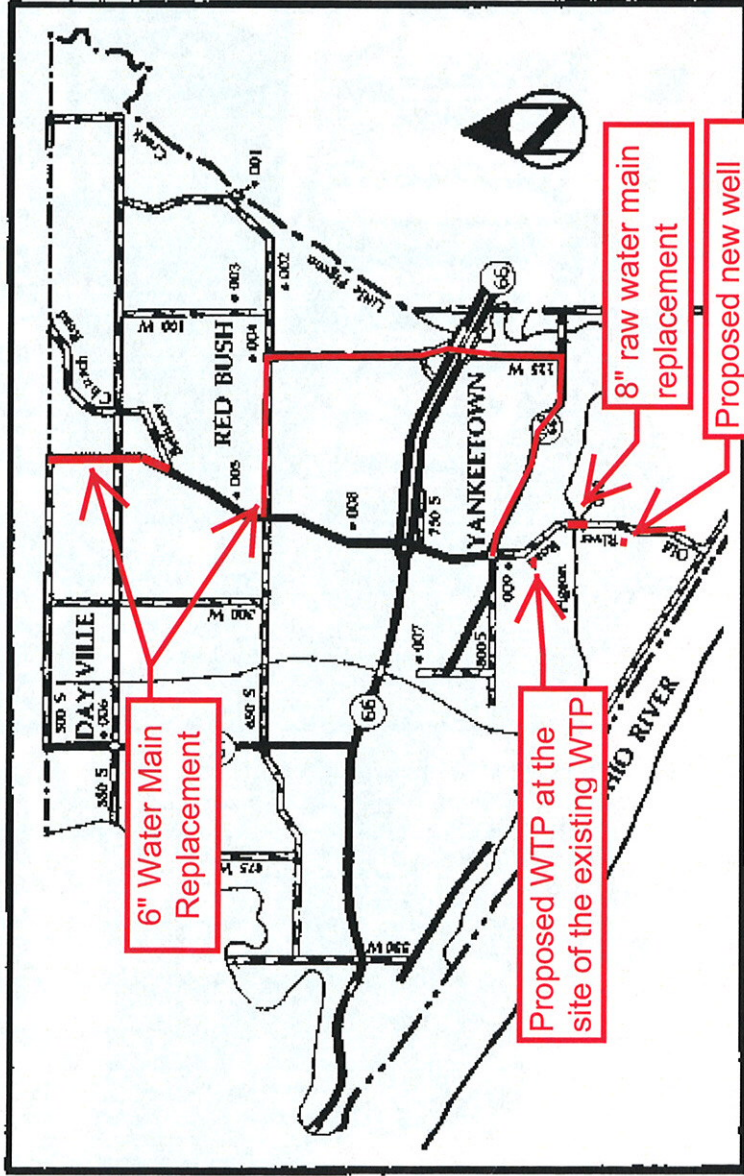


Anderson Township (45001-010)



004

No.	Rtg.	Description
001	O	Bridge, off Bush Road; Bow-Suspension, c.1920; Engineering Transportation (695)
002	N	Kaiser House, 650 S; Greek Revival, 1871; Architecture, Exploration-Settlement (695)
003	C	House, 100 W; Carpenter-Builder, c.1900; Architecture (695)
004	O	St. Rupert's Church, 650 S; Romanesque Revival, 1902; Architecture, Religion (695)
005	C	Huffman House, Yankeetown Road; Carpenter-Builder/Eastlake, c.1890; Architecture (695)
006	C	House, 530 S; Carpenter-Builder, c.1900; Architecture (695)
007	N	Bates House, 350 W; Greek Revival/Italianate, c.1852; Architecture (695)
008	C	Wesley William House, Boone Street, Yankeetown; Carpenter-Builder/Eastlake, c.1895, Architecture (695)
009	C	Belle House, River Road; Gothic Revival, c.1880; Architecture (695)
010	O	Bridge, River Road; Double-Intersection Pratt Through Truss, c.1900; Wrought Iron Bridge Co.; Builders; Engineering, Transportation (695)



010