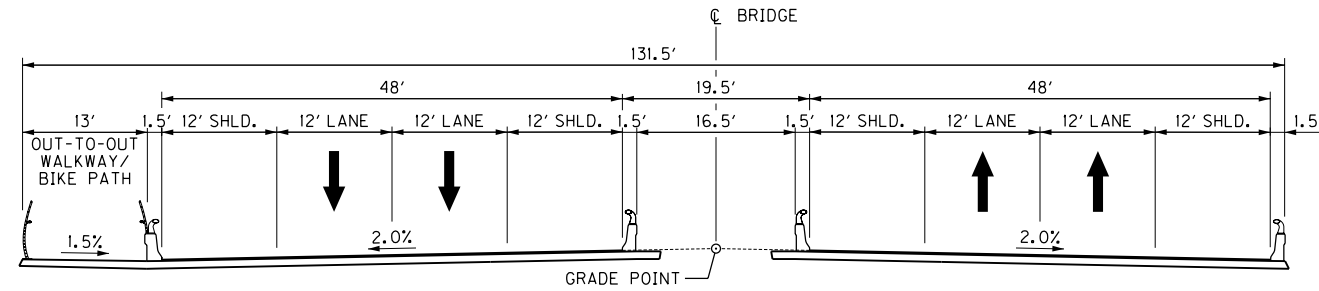


# TYPICAL SECTIONS

COUNTY OF	ITEM NO.	SHEET NO.
JEFFERSON	5-745.00	R2

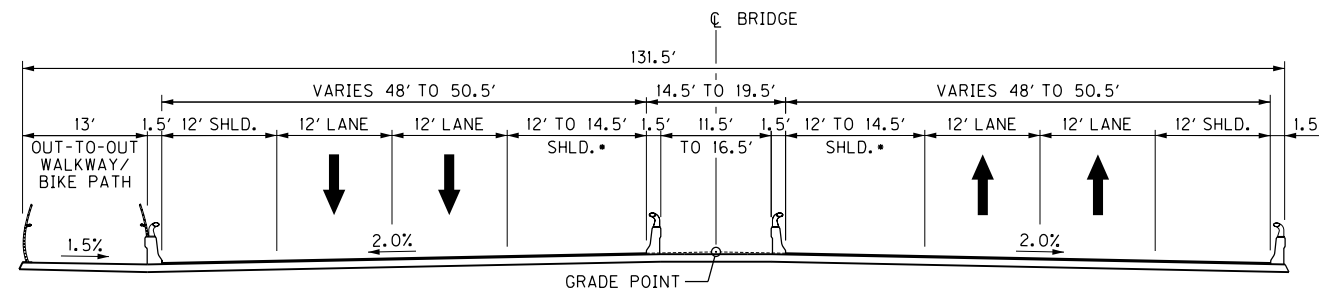
**PRELIMINARY**



**NORMAL BRIDGE SECTION**

**TOWER LOCATIONS**

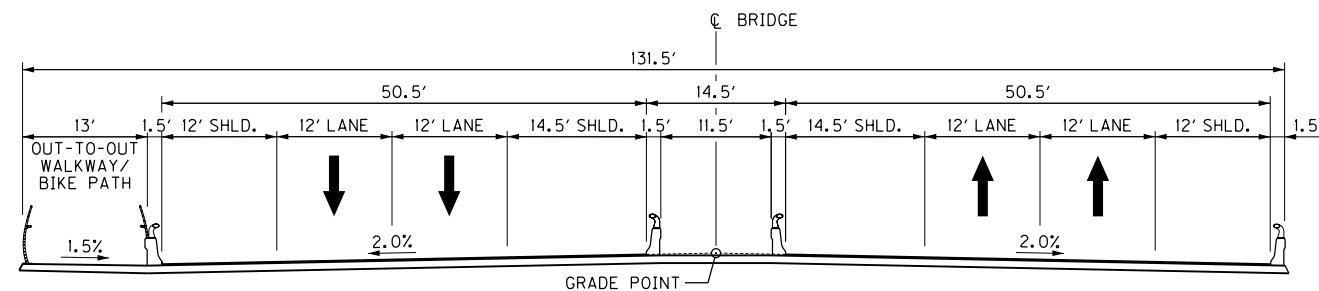
STA. 193+82.00 TO STA. 194+08.00  
 STA. 205+82.00 TO STA. 206+08.00



**NORMAL BRIDGE SECTION**

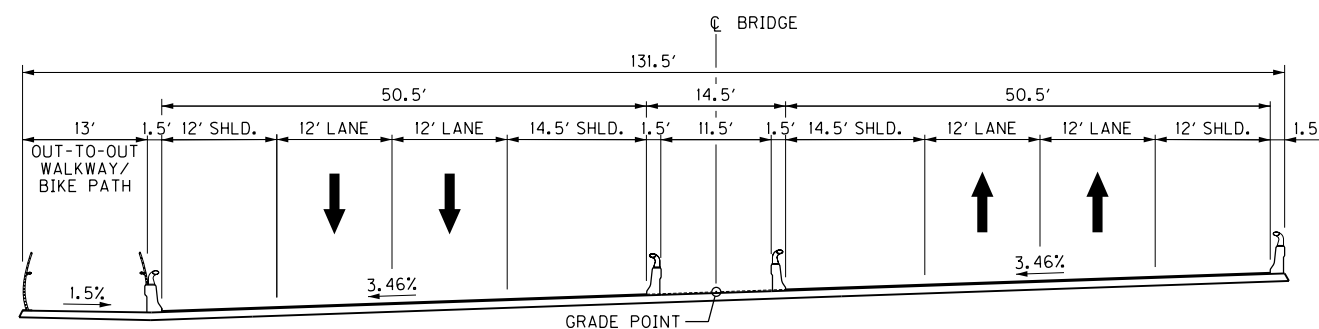
**TAPER LOCATIONS**

•147' TAPER @ 58.8:1  
 STA. 192+35.00 TO STA. 193+82.00  
 STA. 194+08.00 TO STA. 195+55.00  
 STA. 204+35.00 TO STA. 205+82.00  
 STA. 206+08.00 TO STA. 207+55.00



**NORMAL BRIDGE SECTION**

STA. 187+40.00 TO STA. 192+35.00  
 STA. 195+55.00 TO STA. 204+35.00  
 STA. 207+55.00 TO STA. 207+75.00



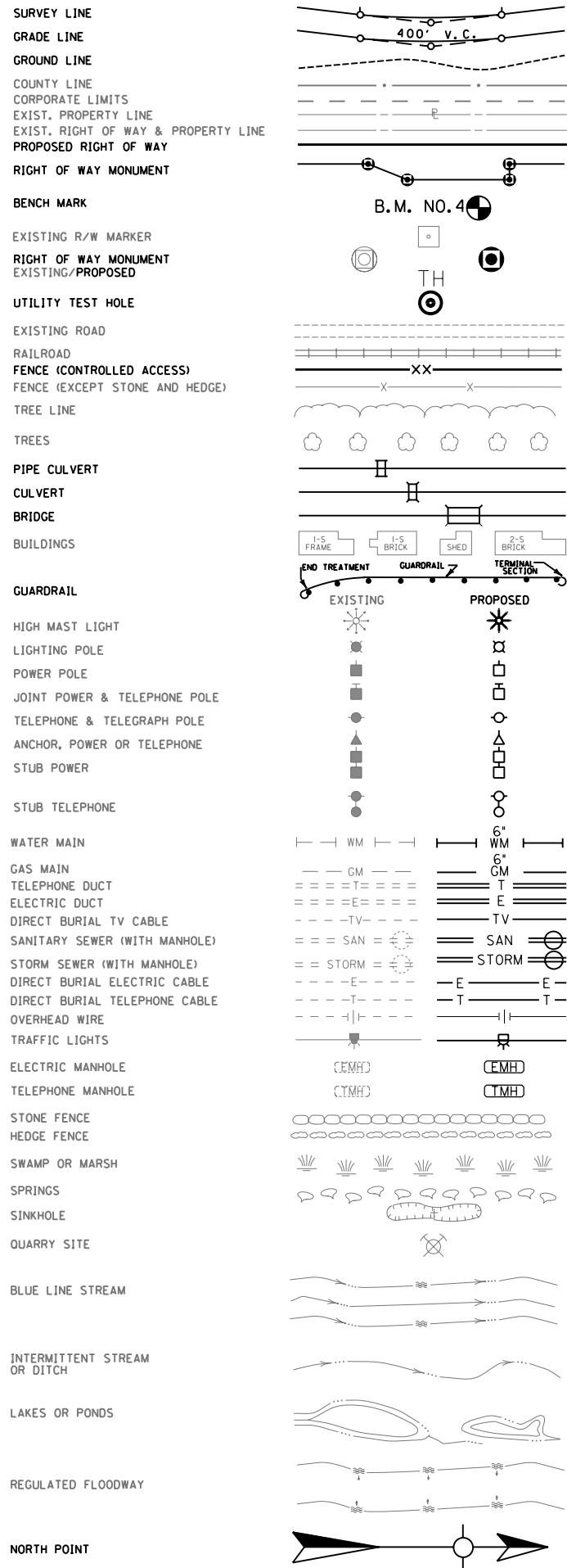
**SUPERELEVATED BRIDGE SECTION**

STA. 211+69.93 TO STA. 212+50.00  
**EAST END BRIDGE – STA. 187 + 40.00 TO STA. 212 + 50.00**

TYPICAL SECTIONS  
 I-265 EAST END BRIDGE

COUNTY OF	ITEM NO.	SHEET NO.
JEFFERSON	5-745.00	R3

### CONVENTIONAL SIGNS



### KENTUCKY

**CABLE TV**  
 Insight Kentucky Partners II, L.P.  
 4701 Commerce Drive  
 Louisville, Kentucky 40229  
 Deno Barbour – Highway Coordinator  
 Barbour.d@insight-com.com  
 Office: 502-357-4376  
 Cell: 502-664-7395

**TELEPHONE**  
 Bellsouth Telecommunication, Inc.  
 3719 Bardstown Road  
 Louisville, Kentucky 40218  
 J. Clark Sanders – Design & Construction Coordinator  
 John.Sanders2@bellsouth.com  
 Office: 502-454-8844  
 Cell: 502-609-5034  
 Stan Bush  
 Stanley.Bush@bellsouth.com  
 502-454-8627  
 Morgan Hemdon  
 Bo Lowery

**FIBER OPTIC**  
 Wil Tel Communications  
 Williams Communications  
 110 West 7<sup>th</sup> Street, Suite 500  
 Tulsa, Oklahoma 74121-9917  
 Linda Rodgers  
 linda.rodgers@wiltel.com  
 Timothy E. Morphew – Technician Field Services  
 Tim.Morphew@Level3.com  
 Cell: 502-551-5989

**WATER**  
 Louisville Water Company  
 550 South Third Street  
 Louisville, Kentucky 40202  
 Keith Coombs – Relocation Engineer  
 kcoombs@lwcky.com  
 Office: 502-569-3600 ext. 3682

### UTILITY OWNERS

#### INDIANA

**TELECOMMUNICATIONS**  
 Insight Communications  
 3408 Industrial Parkway  
 Jeffersonville, Indiana 47130  
 Leroy Wilson  
 Wilson.l@insightcom.com  
 812-218-6000

**AT&T Indiana**  
 5858 North College Avenue  
 Indianapolis, Indiana 46220  
 Michael Haynes  
 Mh2623@ATT.com  
 317-252-4007

**Level 3 Communications, LLC**  
 1025 El Dorado Boulevard  
 Broomfield, Colorado 80021  
 Marsha Kidd  
 Marsha.Kidd@Level3.com  
 918-547-0029

**WATER**  
 Indiana American Water Company  
 555 East County Line Road  
 Greenwood, Indiana 46143  
 Greg Gibson  
 Greg.gibson@amwater.com  
 317-885-2444

**Watson Rural Water**  
 4106 Utica-Sellersburg Road  
 Sellersburg, IN 47172  
 812-246-5416

**Watson Water Company**  
 US 50 West  
 P.O. Box 295  
 Loogootee, Indiana 47553  
 Robert Stoner  
 812-246-5416

**GAS & ELECTRIC**  
 Louisville Gas and Electric Company  
 820 West Broadway  
 P.O. Box 32020  
 Louisville, Kentucky 40202  
 Greg Geiser  
 Greg.Geiser@eon-us.com  
 Office: 502-333-1949

**SANITARY & SEWER**  
 Metropolitan Sewer District  
 700 West Liberty Street  
 Louisville, Kentucky 40202  
 David Givan  
 givand@msdlouky.org  
 Office: 502-540-6129

**CELLULAR**  
 T-Mobile of KY / Southern IN  
 11509 Commonwealth Drive #9  
 Louisville, Kentucky 40299  
 Greg Green – T-Mobile Field Operations Supervisor  
 greg.green@t-mobile.com  
 Office: 502-297-6206  
 Fax: 502-297-6252

**TRIMARC**  
 1900 Founders Drive, Suite 102  
 Kettering, Ohio 45420  
 Scott Evans – Program Manager  
 s.evans@ngc.com  
 Office: 937-259-4029  
 Fax: 937-259-4885

**901 West Main Street**  
 Louisville, Kentucky 40202  
 Todd Hood – Systems Administrator  
 Todd.hood@ngc.com  
 Office: 502-587-6645

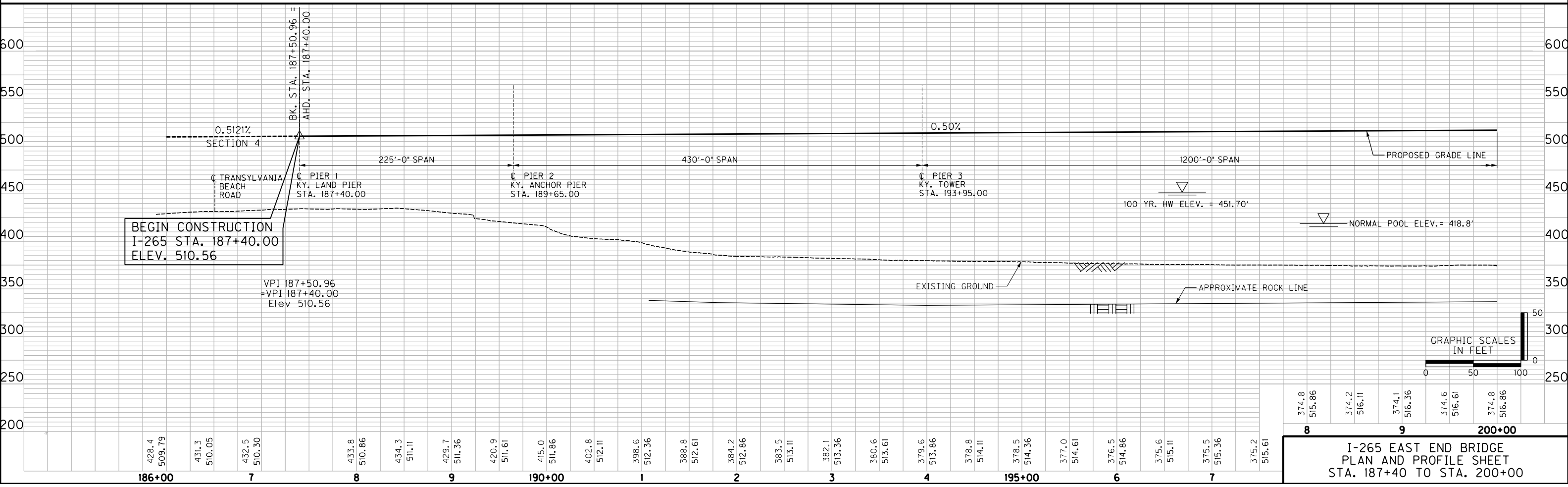
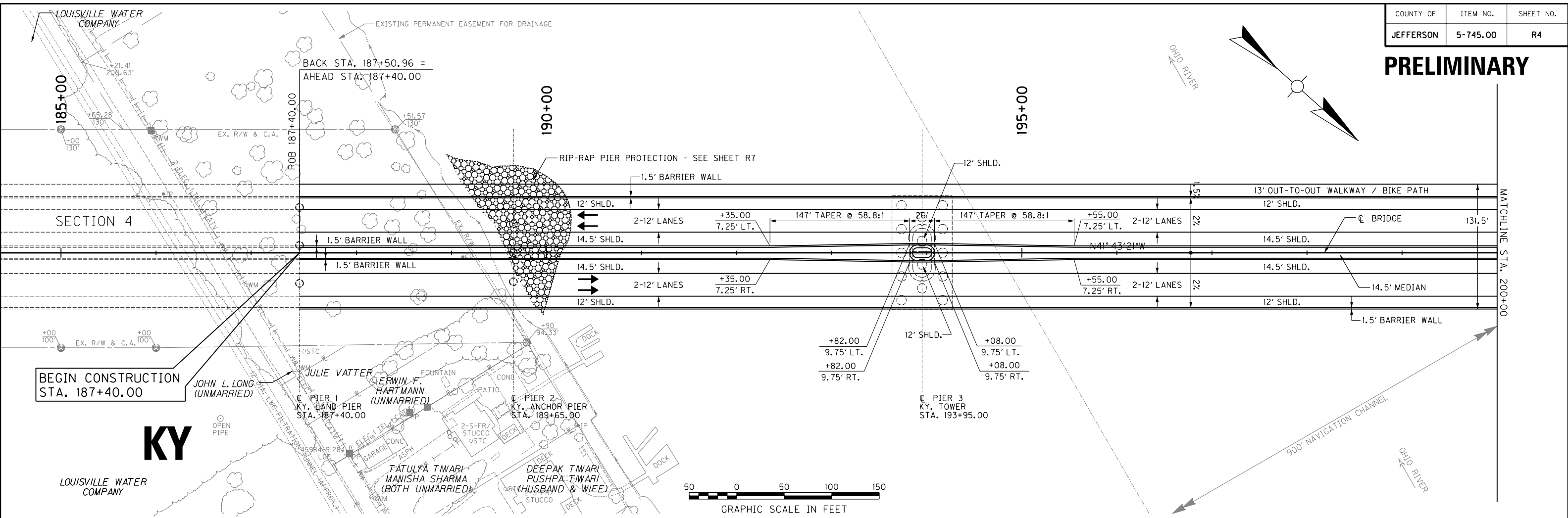
NOTE: THE UTILITY LOCATIONS SHOWN ON THE PLANS ARE APPROXIMATE. IT IS THE RESPONSIBILITY OF THE CONTRACTOR TO CONTACT ALL UTILITY OWNERS AND LOCATE ALL UTILITIES PRIOR TO EXCAVATING.

THE CONTRACTOR IS ADVISED TO CONTACT THE BUD ONE-CALL SYSTEM; HOWEVER, THE CONTRACTOR SHOULD BE AWARE THAT NOT ALL OWNERS MAY BE A MEMBER OF THE BUD ONE-CALL SYSTEM.

**PRELIMINARY**

LEGEND & UTILITY OWNERS

**PRELIMINARY**

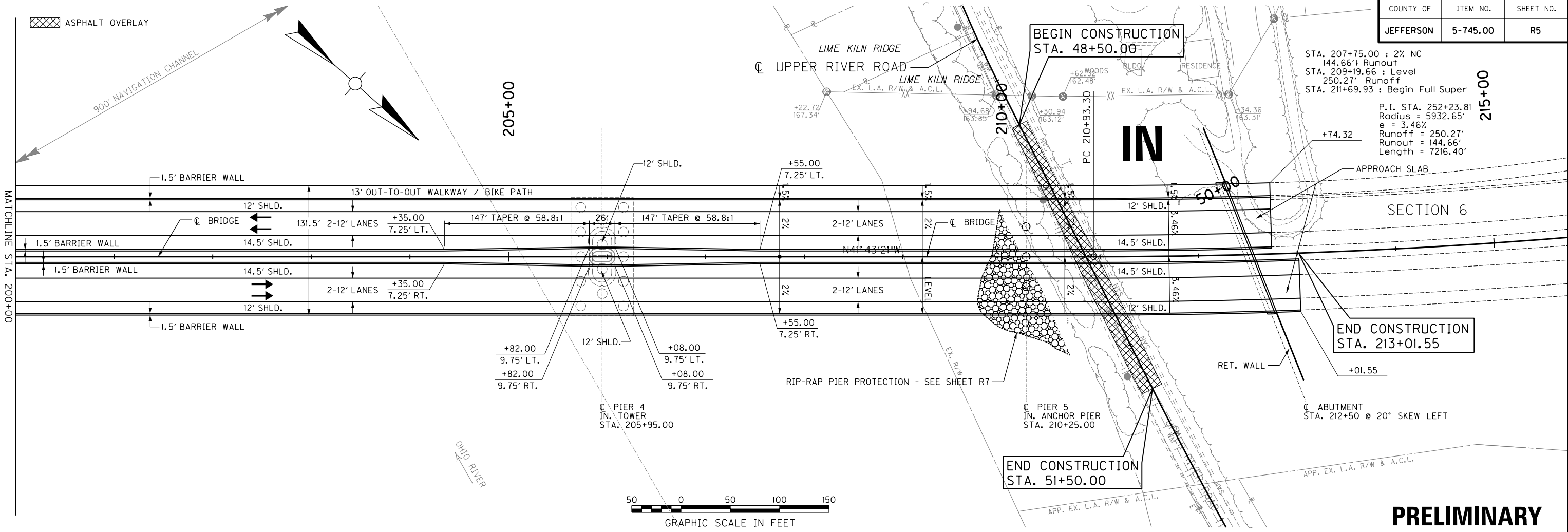


374.8	515.86	374.2	516.11	374.1	516.36	374.6	516.61	374.8	516.86
8		9		200+00					

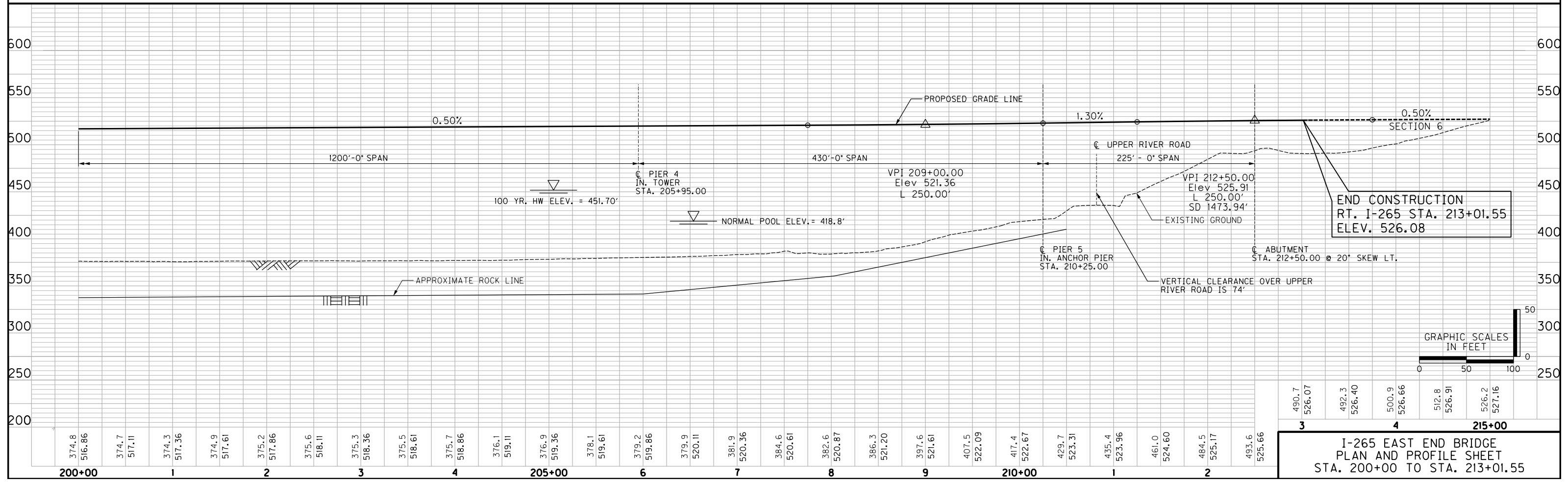
I-265 EAST END BRIDGE  
PLAN AND PROFILE SHEET  
STA. 187+40 TO STA. 200+00

STA. 207+75.00 : 2% NC  
 144.66' Runout  
 STA. 209+19.66 : Level  
 250.27' Runoff  
 STA. 211+69.93 : Begin Full Super

P.I. STA. 252+23.81  
 Radius = 5932.65'  
 e = 3.46%  
 Runoff = 250.27'  
 Runout = 144.66'  
 Length = 7216.40'



**PRELIMINARY**

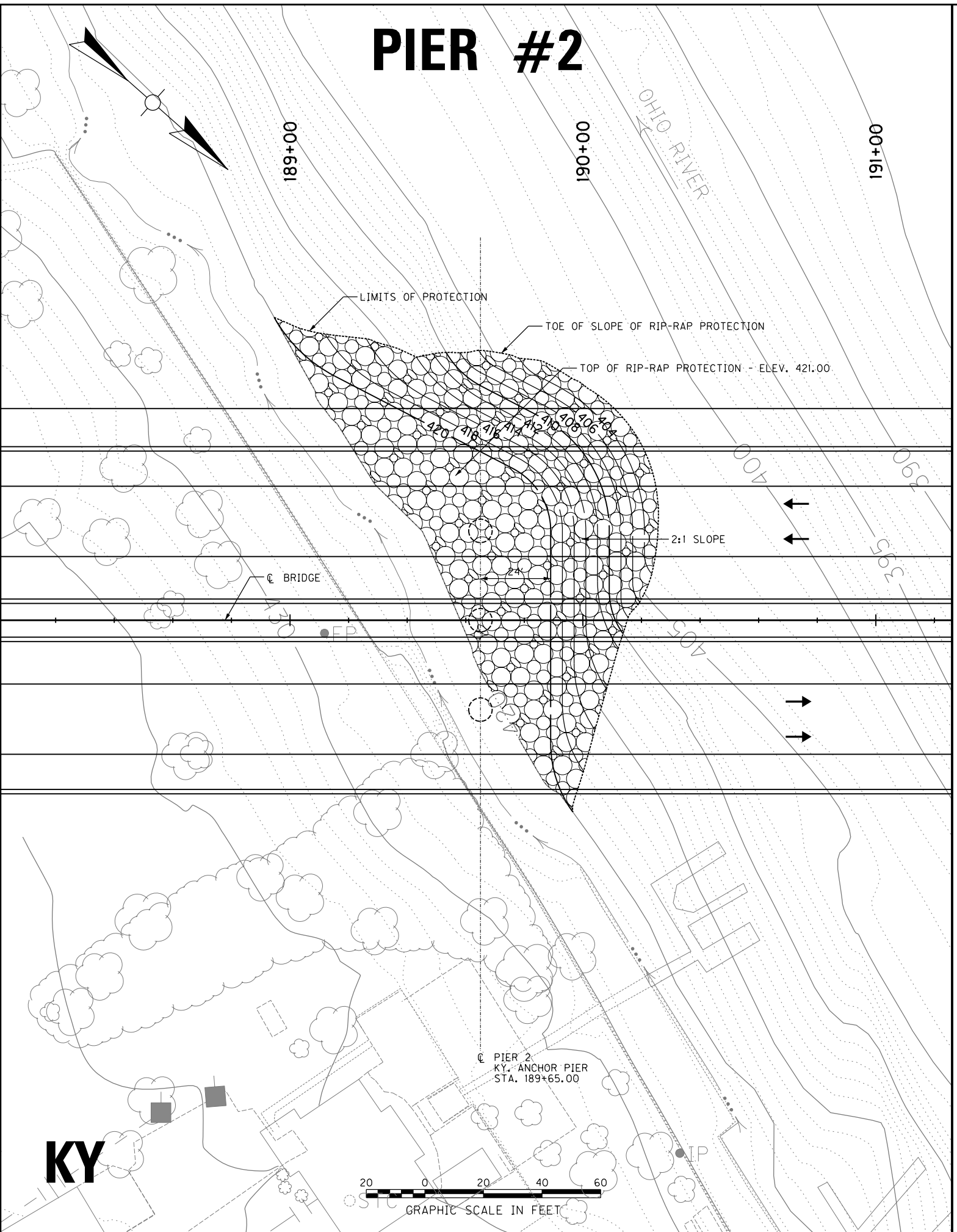


490.7	526.07	492.3	526.40	500.9	526.66	512.8	526.91	526.2	527.16
3		4		215+00					

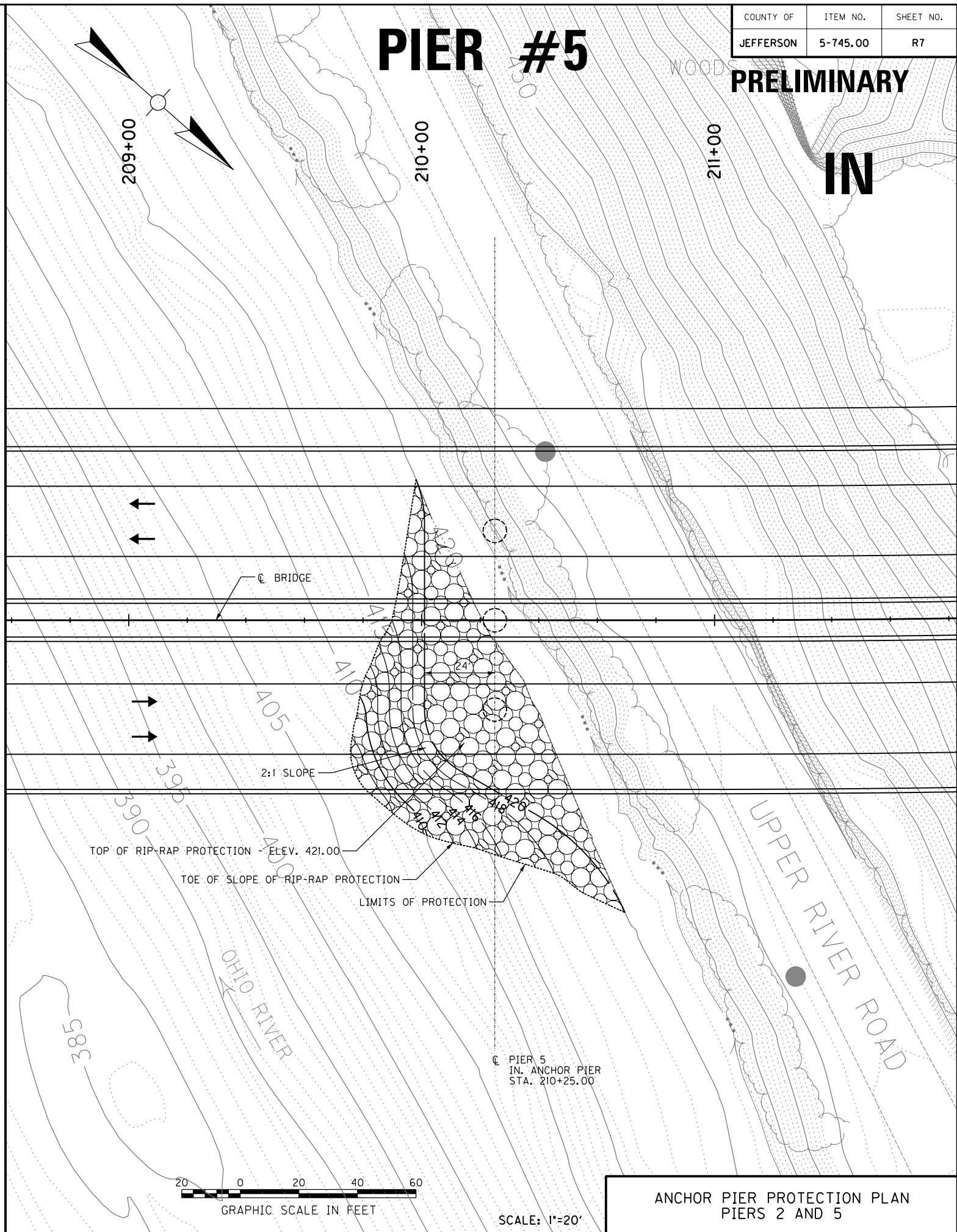
**I-265 EAST END BRIDGE  
 PLAN AND PROFILE SHEET  
 STA. 200+00 TO STA. 213+01.55**

COUNTY OF	ITEM NO.	SHEET NO.
JEFFERSON	5-745.00	R7

# PIER #2



# PIER #5



**PRELIMINARY**  
**IN**

ANCHOR PIER PROTECTION PLAN  
PIERS 2 AND 5