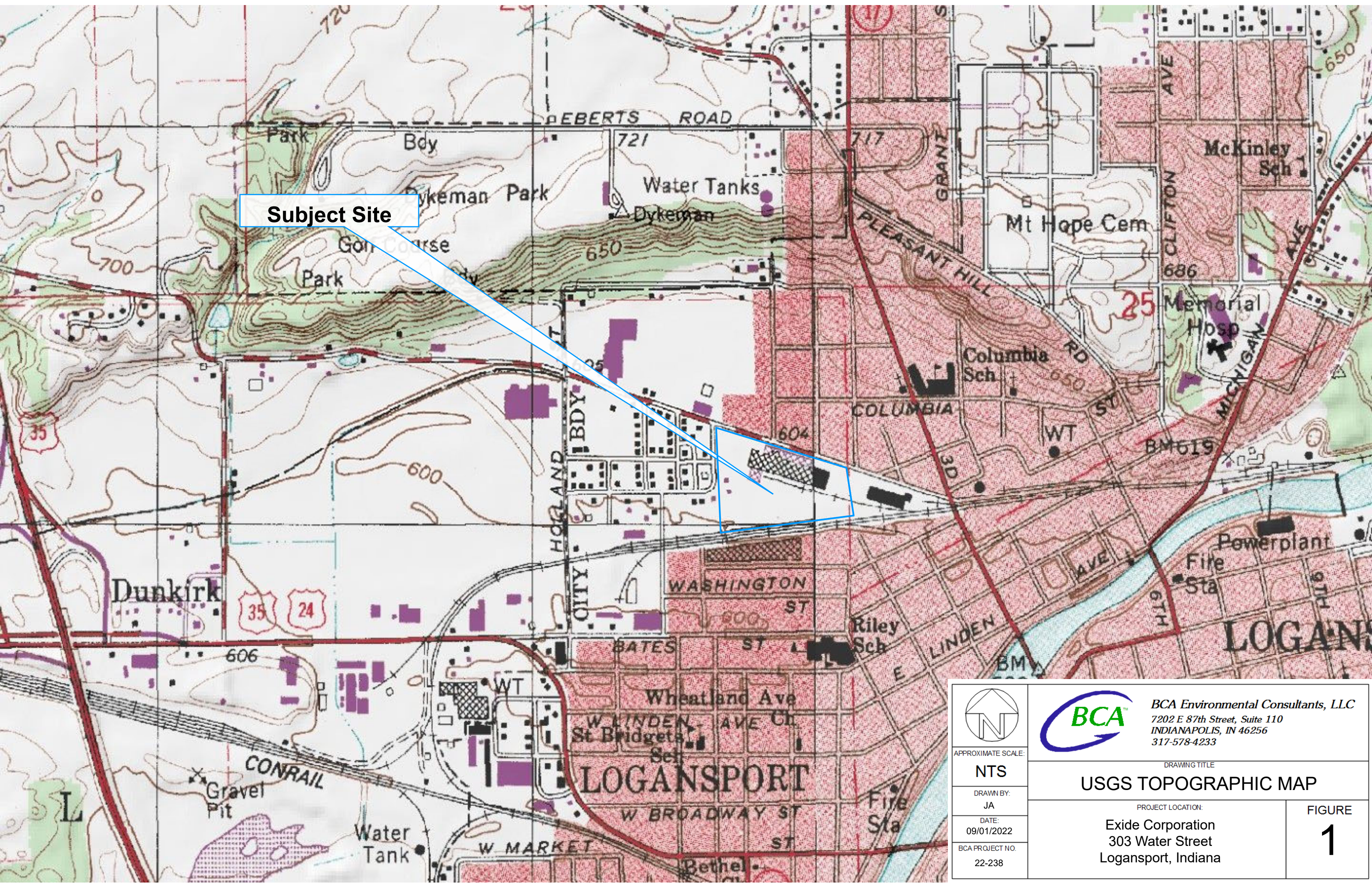


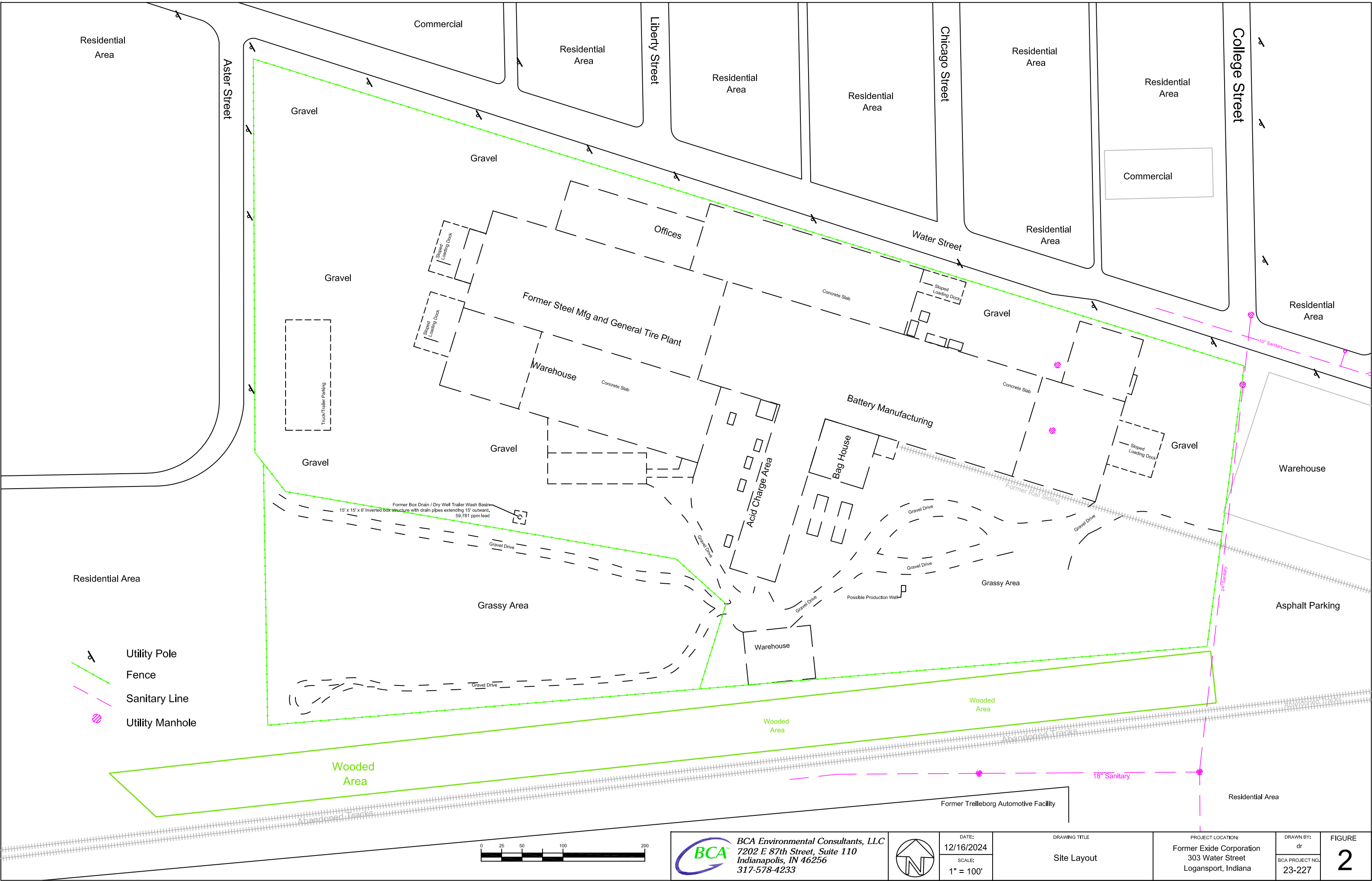
Figures

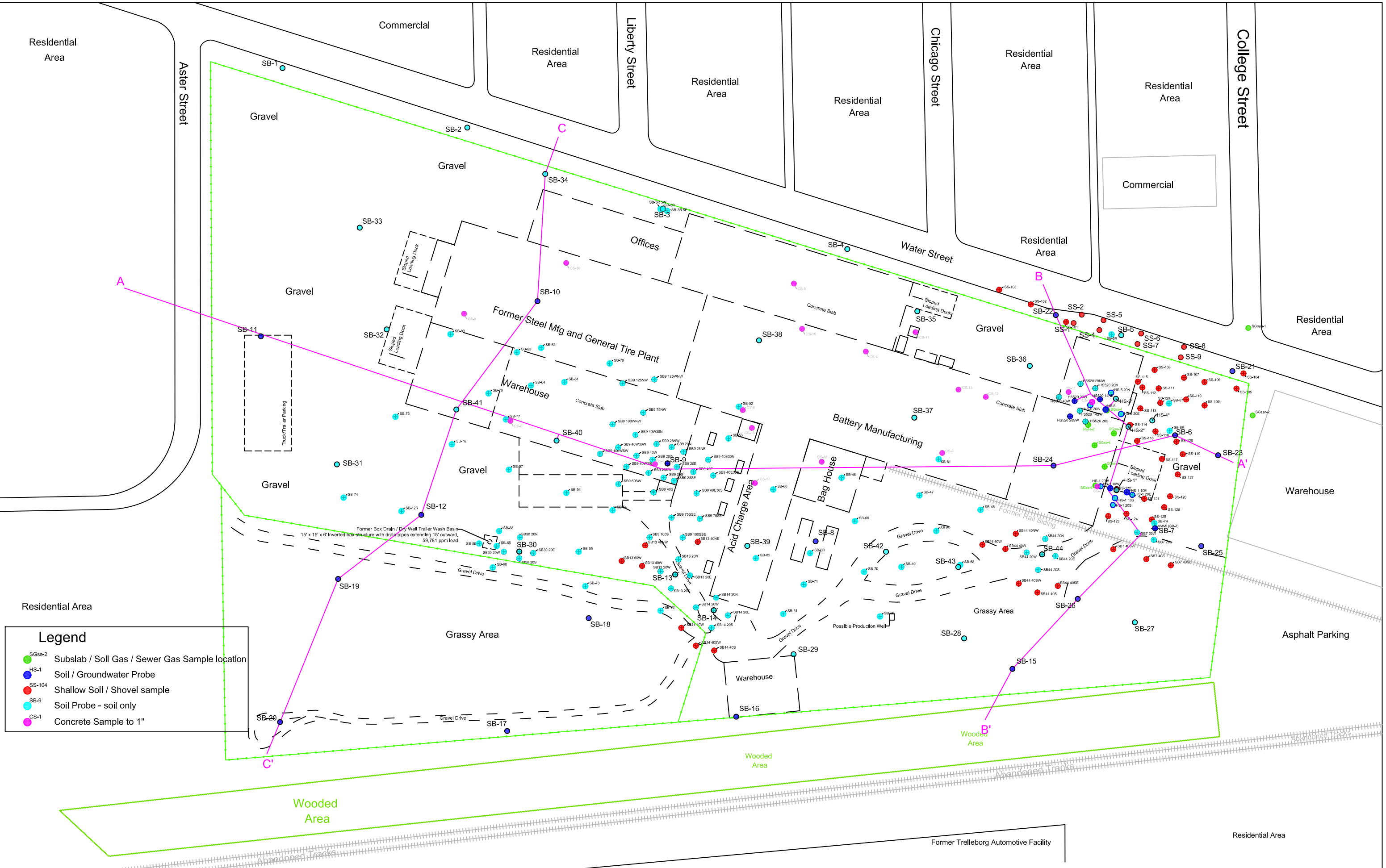
Remediation Work Plan
Former Exide Corporation
303 Water Street
Logansport, IN 46947



Subject Site

 APPROXIMATE SCALE: NTS DRAWN BY: JA DATE: 09/01/2022 BCA PROJECT NO. 22-238	 <i>BCA Environmental Consultants, LLC</i> 7202 E 87th Street, Suite 110 INDIANAPOLIS, IN 46256 317-578-4233	
	DRAWING TITLE USGS TOPOGRAPHIC MAP	
	PROJECT LOCATION: Exide Corporation 303 Water Street Logansport, Indiana	FIGURE 1





Legend

●

SGs-2

Subslab / Soil Gas / Sewer Gas Sample location

●

HS-1

Soil / Groundwater Probe

●

SS-104

Shallow Soil / Shovel sample

●

SB-9

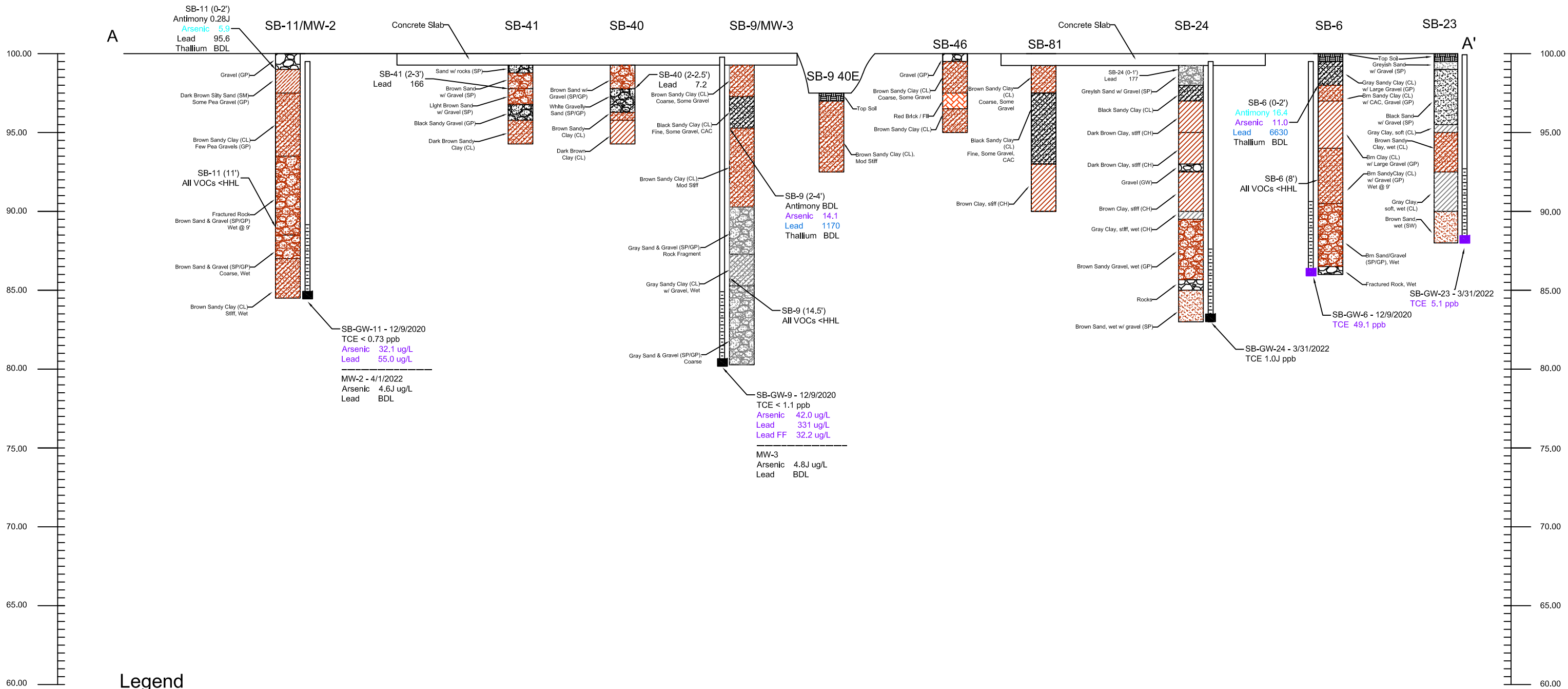
Soil Probe - soil only

●

CS-1

Concrete Sample to 1"





Legend

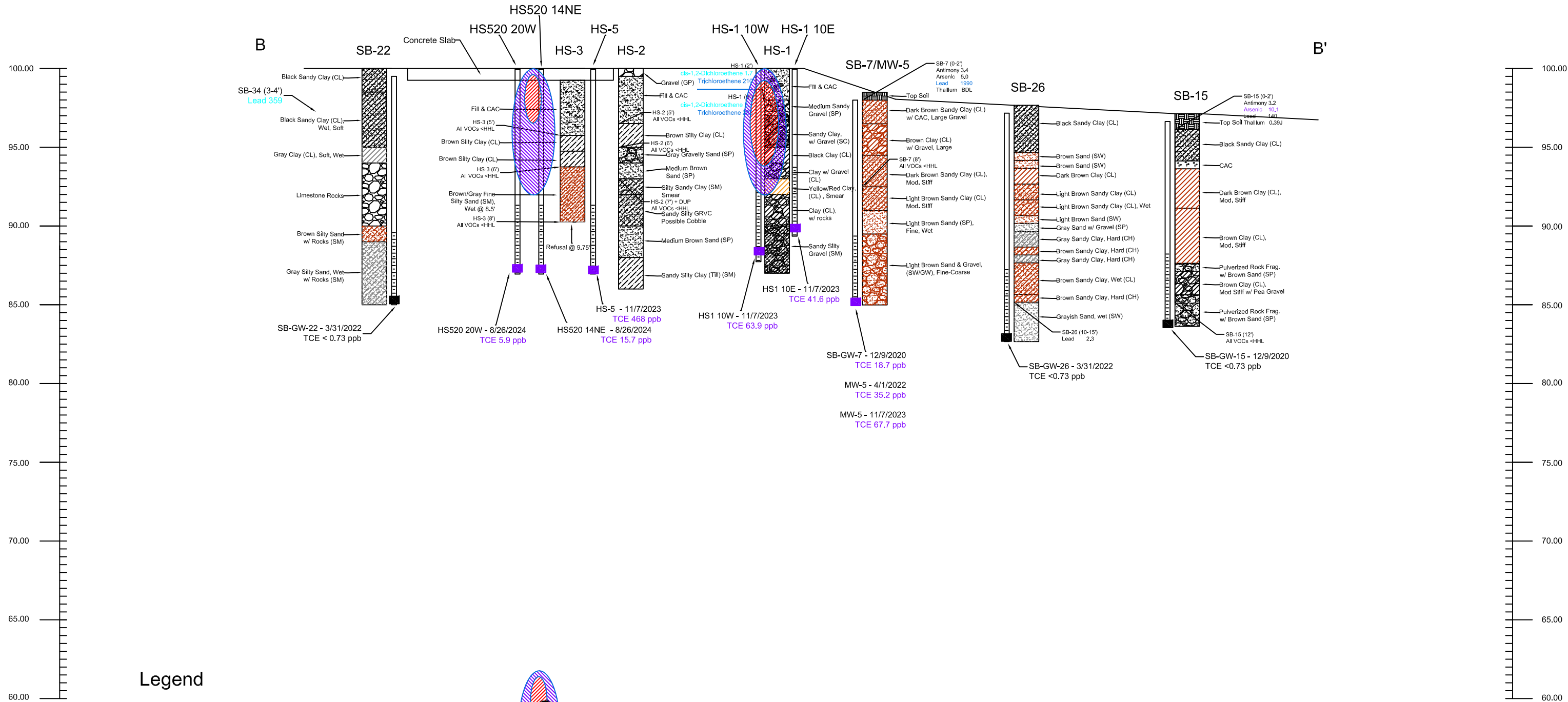
- 100.00' SURFACE ELEVATION*
100.00' TOC = TOP OF CASING ELEVATION*
- TOPSOIL
 - CONCRETE OR ASPHALT
 - SAND
 - SAND AND GRAVEL
 - SILTY CLAY
 - CLAY
 - BEDROCK

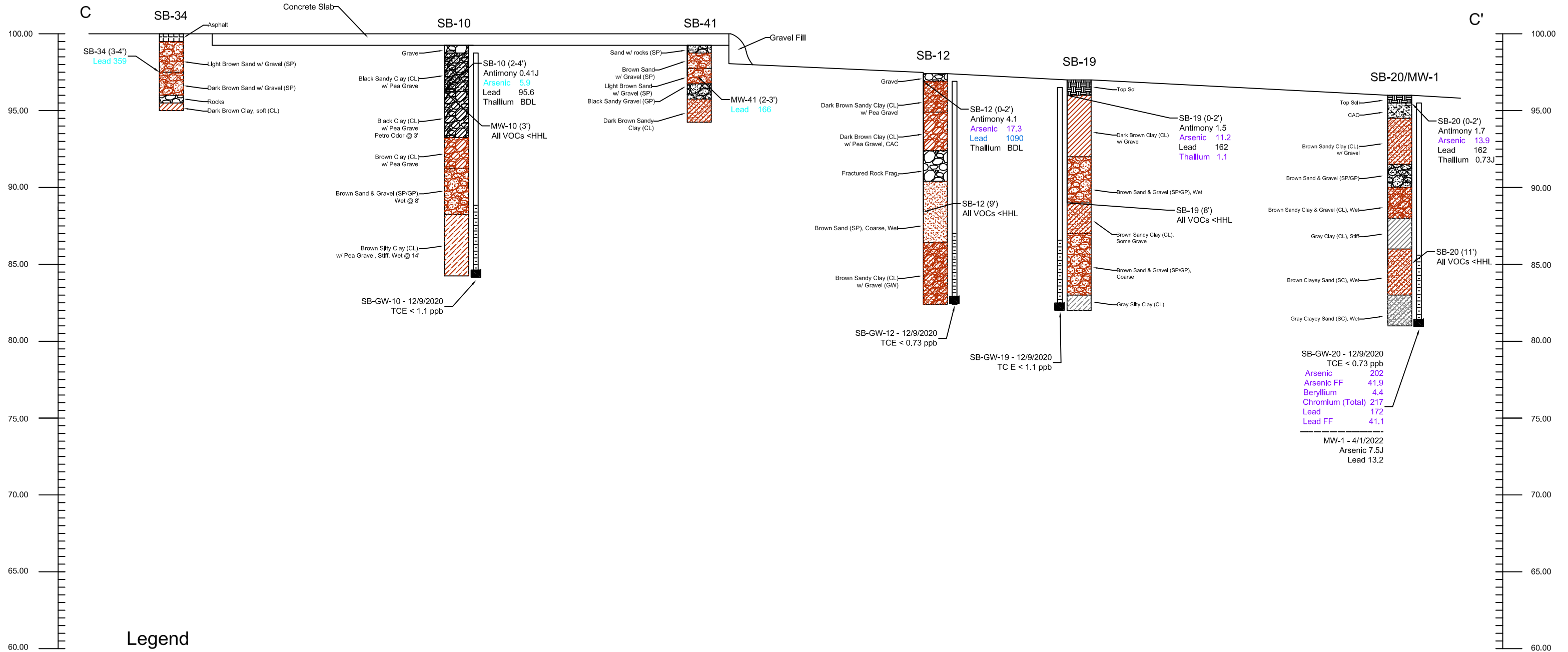
Groundwater

- Sample Exceeds RbCG R-HHL
RbCG = Risk-based Closure Guide (R2)
R-HHL = Residential Groundwater Human Health Level

Soil

- Sample Exceeds RbCG Direct Contact HHL
- Sample Exceeds RbCG Comm/Industrial Direct Contact HHL
- Sample Exceeds RbCG Excavation Direct Contact HHL
- Sample Exceeds OLD RCG Migration to GW
RbCG = Risk-based Closure Guide (R2)
RCG = Remediation Closure Guide





Legend

100.00' SURFACE ELEVATION*
100.00' TOC = TOP OF CASING ELEVATION*

- TOPSOIL
- CONCRETE OR ASPHALT
- SAND
- SAND AND GRAVEL
- SILTY CLAY
- CLAY
- BEDROCK

Groundwater

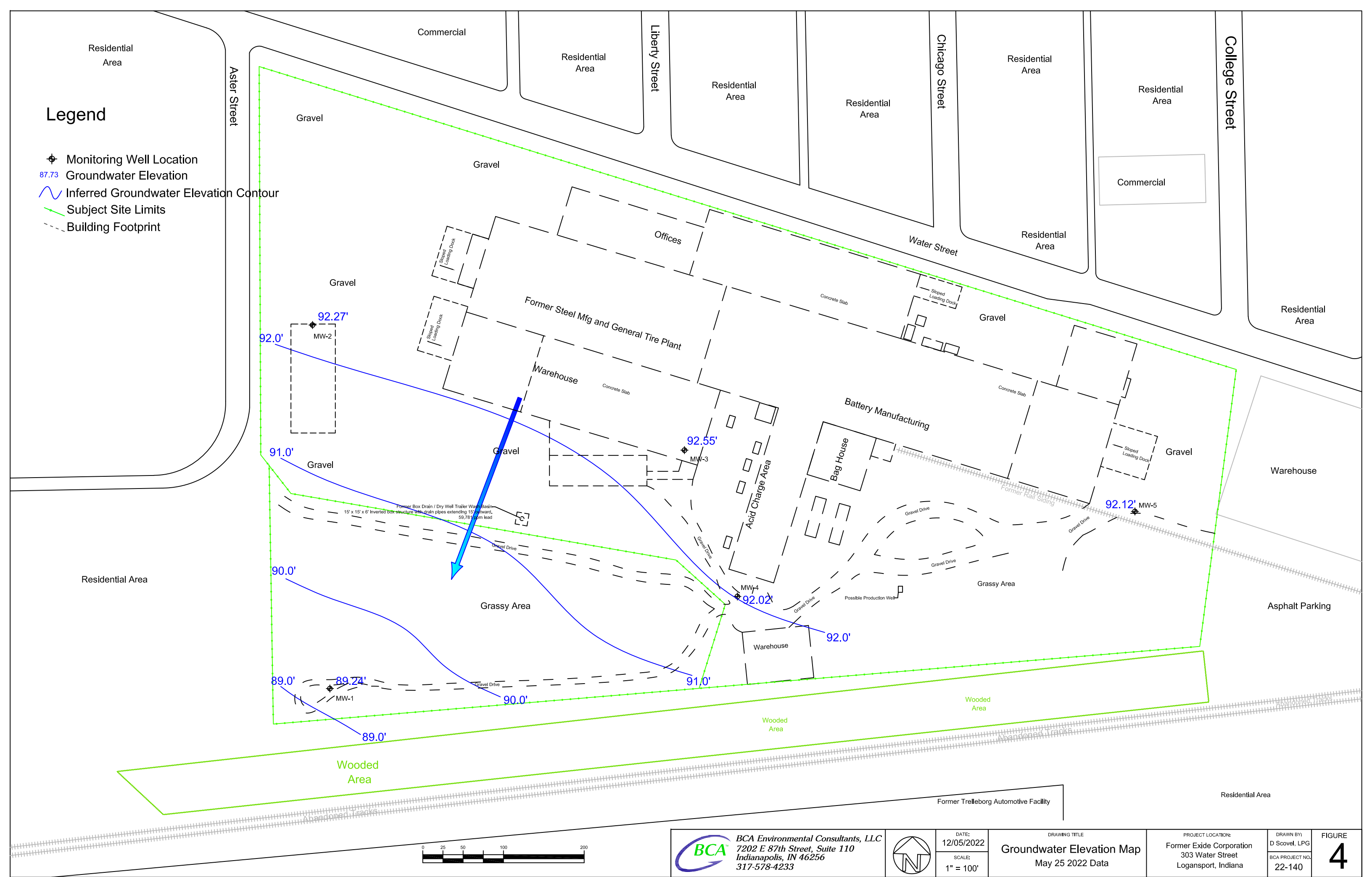
Sample Exceeds RbCG R-HHL
RbCG = Risk-based Closure Guide (R2)
R-HHL = Residential Groundwater Human Health Level

Soil

Sample Exceeds RbCG Direct Contact HHL
Sample Exceeds RbCG Comm/Industrial Direct Contact HHL
Sample Exceeds RbCG Excavation Direct Contact HHL
Sample Exceeds OLD RCG Migration to GW
RbCG = Risk-based Closure Guide (R2)
RCG = Remediation Closure Guide

Legend

- Monitoring Well Location
- 87.73 Groundwater Elevation
- Inferred Groundwater Elevation Contour
- Subject Site Limits
- Building Footprint



BCA Environmental Consultants, LLC
7202 E 87th Street, Suite 110
Indianapolis, IN 46256
317-578-4233



DATE:
12/05/2022
SCALE:
1" = 100'

DRAWING TITLE
Groundwater Elevation Map
May 25 2022 Data

PROJECT LOCATION:
Former Exide Corporation
303 Water Street
Logansport, Indiana

DRAWN BY:
D Scovel, LPG
BCA PROJECT NO.
22-140

FIGURE
4

Residential Area

Legend

SS-104 Lead exceeds RbCG EDC HHL
 SB-9 Lead exceeds RbCG C/IDC HHL
 SB-9 Probe / Sample Location (< HHLs)
 SB-19 Previous Probe Location
 RbCG = Risk Based Closure Guide
 EDC = Excavation Direct Contact
 C/IDC = Commercial / Industrial Direct Contact
 HHL = Human Health Levels
 See data tables for detection results



BCA Environmental Consultants, LLC
7202 E 87th Street, Suite 110
Indianapolis, IN 46256
317-578-4233



DATE: 5/14/2024
SCALE: 1" = 100'

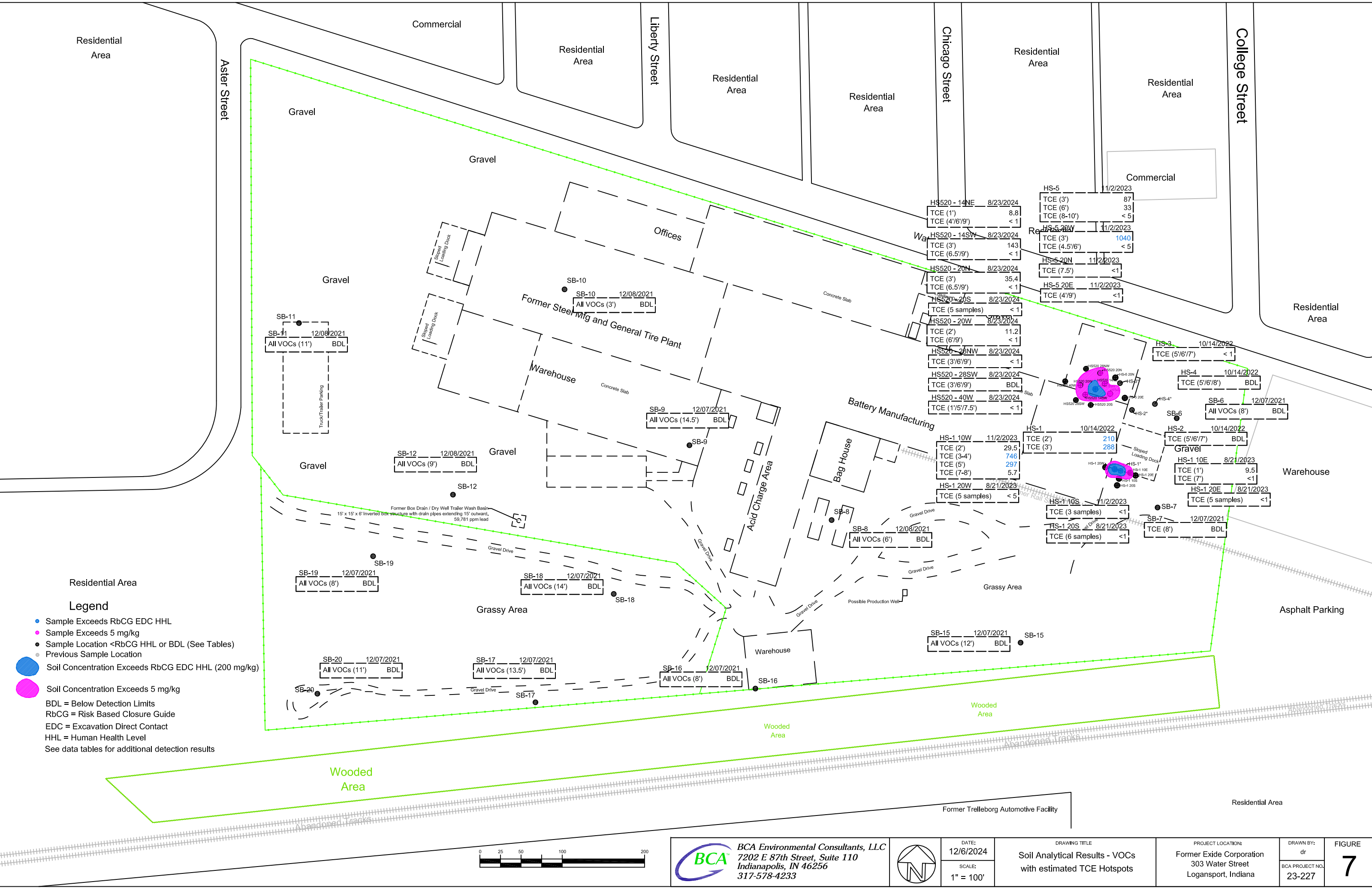
DRAWING TITLE

Soil Analytical Results - Lead

PROJECT LOCATION:
Former Exide Corporation
303 Water Street
Logansport, Indiana

DRAWN BY:	dr
BCA PROJECT NO.	23-227

FIGURE
5



Residential Area

Commercial

Residential Area

Residential Area

Residential Area

Residential Area

Residential Area

Commercial

Residential Area

Warehouse

Asphalt Parking

Residential Area

Residential Area

Legend

- Sample Exceeds RbCG EDC HHL
 - Sample Exceeds 5 mg/kg
 - Sample Location <RbCG HHL or BDL (See Tables)
 - Previous Sample Location
 - Soil Concentration Exceeds RbCG EDC HHL (200 mg/kg)
 - Soil Concentration Exceeds 5 mg/kg
- BDL = Below Detection Limits
RbCG = Risk Based Closure Guide
EDC = Excavation Direct Contact
HHL = Human Health Level
See data tables for additional detection results



BCA Environmental Consultants, LLC
7202 E 87th Street, Suite 110
Indianapolis, IN 46256
317-578-4233



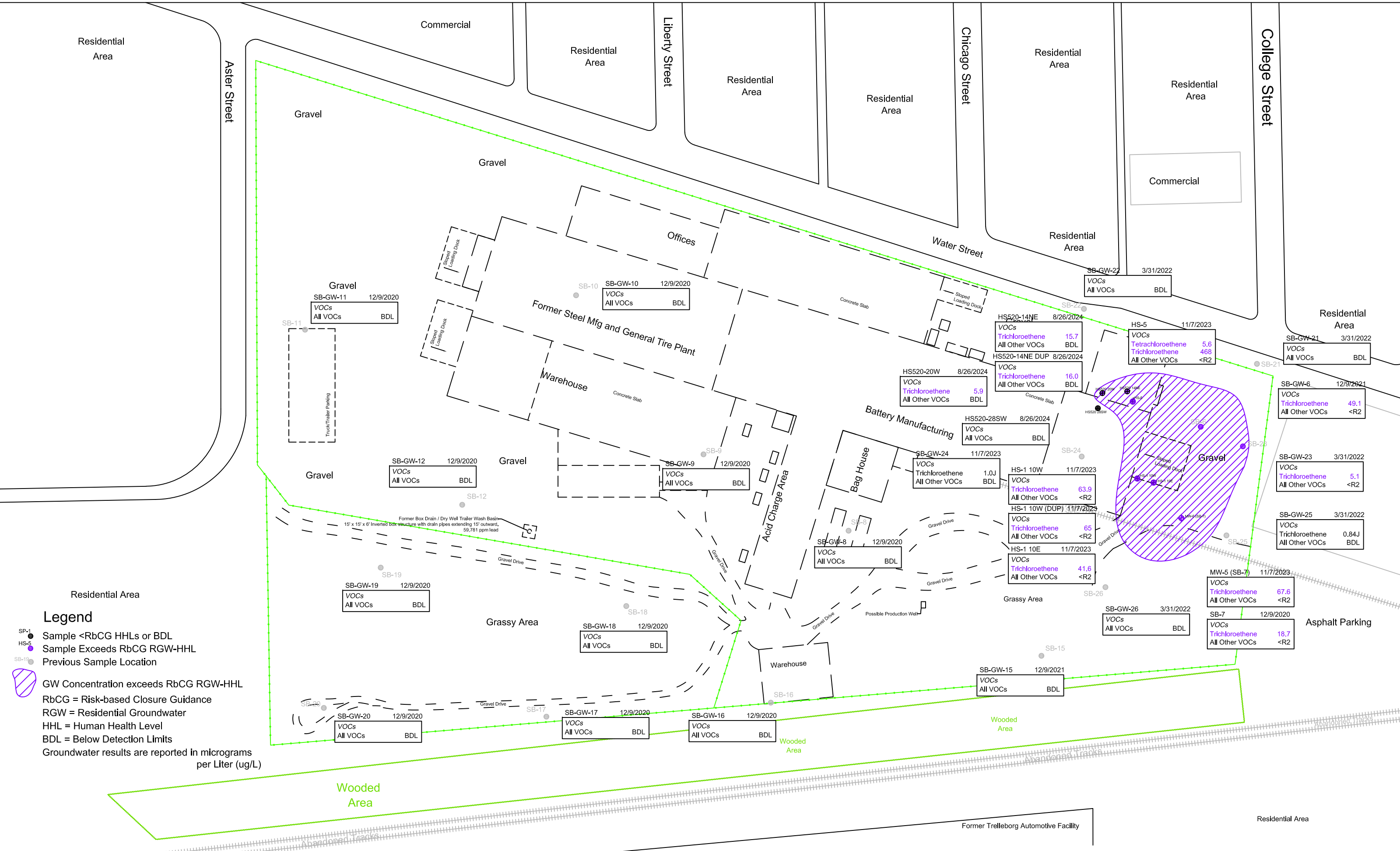
DATE:
12/6/2024
SCALE:
1" = 100'

DRAWING TITLE
Soil Analytical Results - VOCs
with estimated TCE Hotspots

PROJECT LOCATION:
Former Exide Corporation
303 Water Street
Logansport, Indiana

DRAWN BY:
dr
BCA PROJECT NO.
23-227

FIGURE
7



Legend

SP-1 ● Sample <RbCG HHLs or BDL
HS-5 ● Sample Exceeds RbCG RGW-HHL
SB-19 ● Previous Sample Location

GW Concentration exceeds RbCG RGW-HHL

RbCG = Risk-based Closure Guidance
RGW = Residential Groundwater
HHL = Human Health Level
BDL = Below Detection Limits
Groundwater results are reported in micrograms per Liter (ug/L)



BCA Environmental Consultants, LLC
7202 E 87th Street, Suite 110
Indianapolis, IN 46256
317-578-4233



DATE:
12/6/2024

SCALE:
1" = 100'

DRAWING TITLE

Groundwater Analytical Results - VOCs
with estimated TCE plume

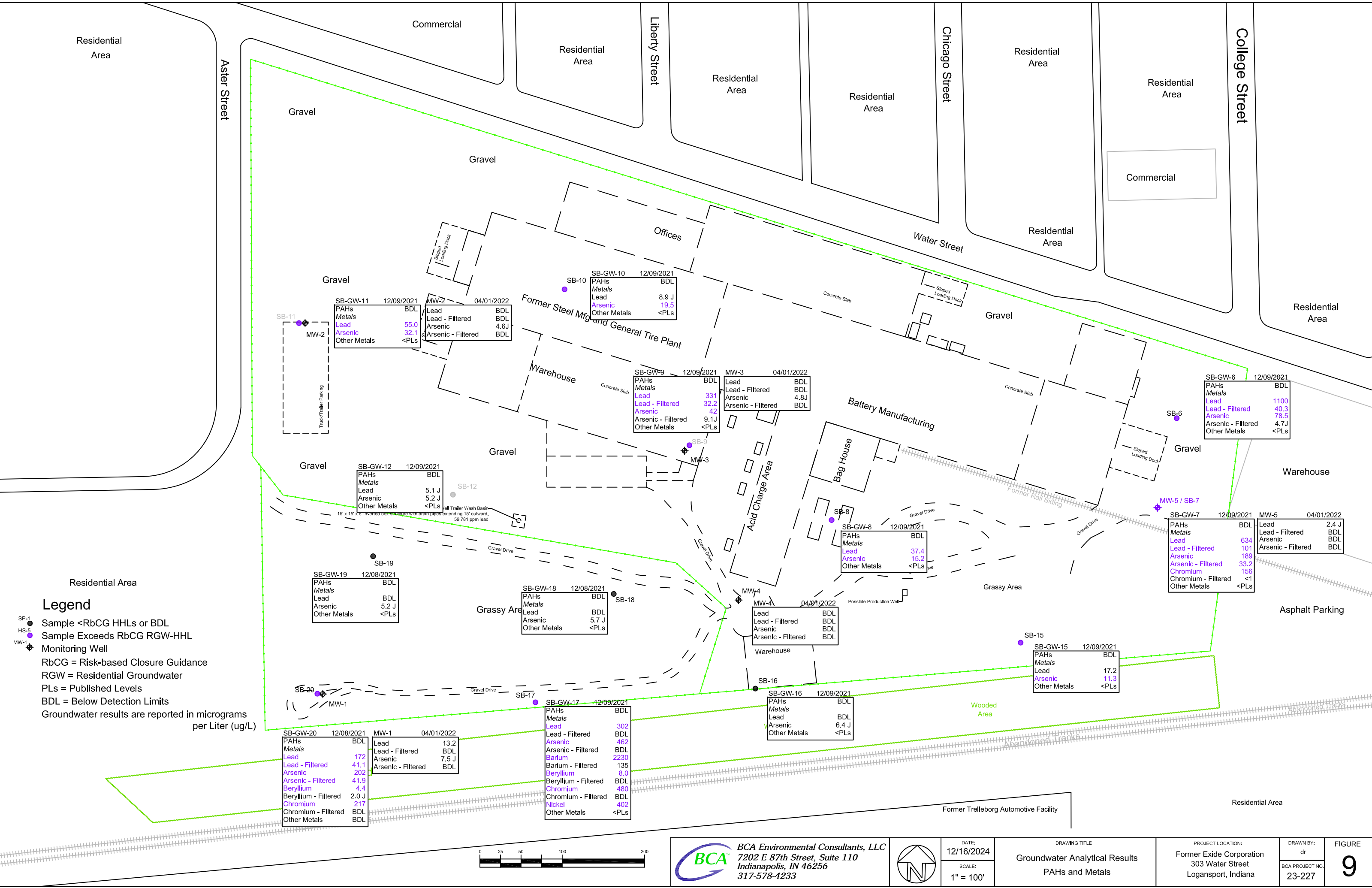
PROJECT LOCATION:
Former Exide Corporation
303 Water Street
Logansport, Indiana

DRAWN BY:
dr

BCA PROJECT NO.
23-227

FIGURE

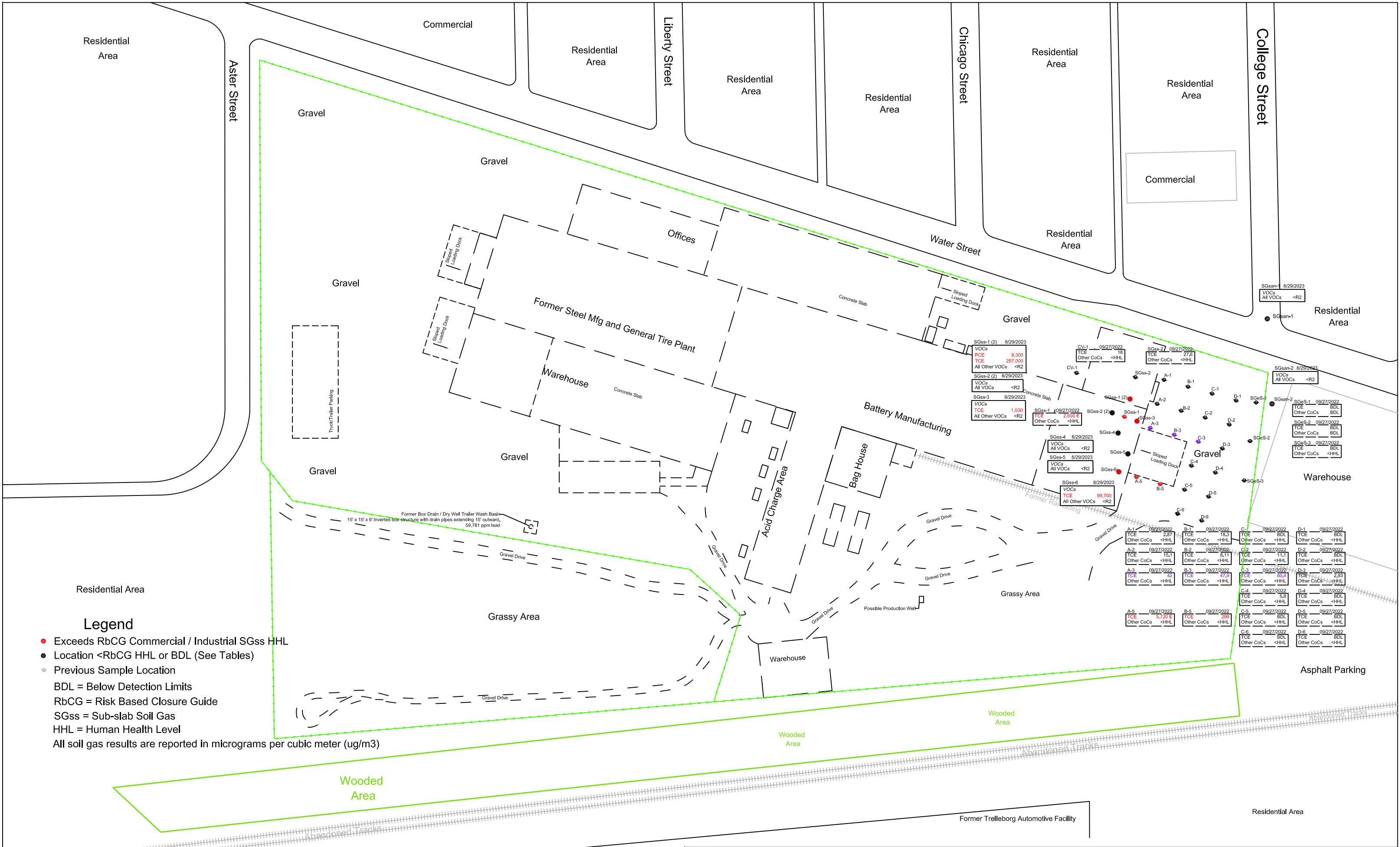
8



Legend

- SP-1 ● Sample <RbCG HHLs or BDL
- HS-5 ● Sample Exceeds RbCG RGW-HHL
- MW-1 ◆ Monitoring Well
- RbCG = Risk-based Closure Guidance
- RGW = Residential Groundwater
- PLs = Published Levels
- BDL = Below Detection Limits
- Groundwater results are reported in micrograms per Liter (ug/L)





Legend

- Exceeds RbCG Commercial / Industrial SGss HHL
 - Location <RbCG HHL or BDL (See Tables)
 - Previous Sample Location
- BDL = Below Detection Limits
RbCG = Risk Based Closure Guide
SGss = Sub-slab Soil Gas
HHL = Human Health Level
All soil gas results are reported in micrograms per cubic meter (ug/m3)



BCA Environmental Consultants, LLC
7202 E 87th Street, Suite 110
Indianapolis, IN 46256
317-578-4233



DATE:
12/23/2024
SCALE:
1" = 100'

DRAWING TITLE
Soil Gas and Vapor Conduit
Analytical Results

PROJECT LOCATION:
Former Exide Corporation
303 Water Street
Logansport, Indiana

DRAWN BY:
dr
BCA PROJECT NO.
23-227

FIGURE
10