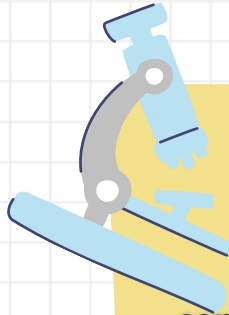


# Indiana APCD Diagnosis Codes & Procedure Codes



## ICD-10

A system for classifying and coding diseases, disorders, injuries, and other health conditions, used for diagnosis reporting.

**contains approximately 68,000 codes**



## CPT Codes / HCPCS Level I

Describe medical, surgical, and diagnostic services performed by healthcare professionals.

**contains over 11,000 codes**

## HCPCS Level II

Identifies products, supplies, and services not included in CPT, such as ambulance services, durable medical equipment, and certain drugs.



**contains nearly 8,000 codes**

## DRG Codes

Used to determine how much Medicare and some health insurance companies will pay for a hospital stay, based on the diagnoses and procedures.

**contains between 740 – 760 codes**



## Indiana APCD

Indiana All Payer Claims Database  
317-232-3619

**[apcd@idoi.in.gov](mailto:apcd@idoi.in.gov)**



The Indiana All Payer Claims Database is a division of the Indiana Department of Insurance

[www.in.gov/idoi/apcd/](http://www.in.gov/idoi/apcd/)