

Indiana Department of Correction
September 2019

Offender Population Report

Prepared for the Justice Reinvestment Advisory Council
and State Budget Committee

Robert Carter, Commissioner



TABLE OF CONTENTS

DOC Monthly Admissions - Adult Offenders	1
Current Adult Offenders, by County of Commit	4
Population Trend Graphs	6
DOC Adult Offenders – Facility Breakdowns, by highest Felony Classification	8
DOC Adult Offenders – Most Serious Offense, Alphabetical by highest Felony Classification	10
DOC Adult Offenders – Most Serious Offense, Ranked by highest Felony Classification	14
Appendix – DOC Facilities – Felony Breakdowns	18



INDIANA DEPARTMENT OF CORRECTION

August 2019 Admissions

by Most Serious Offense

Most Serious Offense	F1	F2	F3	F4	F5	F6	FA	FB	FC	FD	Murder	N
Attempt to Commit Felony Murder	1	1
Accident - Fail To Stop - Death	2	2
Aggravated Battery	1	.	10	3	.	.	.	14
Aiding Inducing/Causing An Offense	.	.	1	1	.	1	1	4
Arson	.	.	.	3	3
Assisting A Criminal	1	.	.	1
Attempt To Commit Felony	2	.	.	.	5	7
Auto Theft, Receiving Stolen Auto Parts	2	3	5
Battery	.	.	1	.	34	4	39
Bribery	1	1
Burglary	.	5	.	41	39	.	1	34	7	.	.	127
Carjacking	2	.	.	.	2
Child Exploitation	.	.	.	1	1	.	.	.	1	1	.	4
Child Molesting	6	.	4	12	.	.	6	8	3	.	.	39
Conspiracy	.	2	1	1	5	.	.	3	.	.	.	12
Conversion	1	1
Corrupt Business Influence	1	.	.	1
Criminal Confinement	.	2	2	.	8	1	.	2	.	1	.	16
Criminal Deviate Conduct	3	.	.	.	3
Criminal Recklessness	4	2	.	.	1	.	.	7
Dangerous Control Of Firearm By A Child	3	3
Dealing In Cocaine Or Narcotic Drug	.	9	5	9	12	.	4	11	.	.	.	50
Dealing In Methamphetamine	.	38	23	33	21	.	.	17	.	.	.	132
Dealing In Schedule IV Controlled Substance	1	.	.	.	1	.	.	2
Dealing In a Schedule I, II, or III Controlled Substance	.	1	3	1	1	.	1	12	.	.	.	19
Dealing Possessing Look-Alike Substance	2	3	5
Disarming A Law Enforcement Officer	.	.	1	1
Dissemination Of Matter Harmful To Minor	1	1
Domestic Battery	7	7
Domestic Battery With Previous Battery Conviction	21	21
Escape	7	15	22
Fail To Stop After Accident - Operating Vehicle Intoxicated	1	.	.	.	1
Failure To Register As A Sex Offender	8	.	.	.	1	.	.	9
Forgery,Counterfeiting,Application Fraud	1	.	.	5	.	.	6
Fraud	1	1
Fraud On A Financial Institution	2	.	.	.	1	.	.	3

Note: 3 current admissions have missing sentencing data due to processing or because of safekeeper status.

INDIANA DEPARTMENT OF CORRECTION

August 2019 Admissions

by Most Serious Offense

Most Serious Offense	F1	F2	F3	F4	F5	F6	FA	FB	FC	FD	Murder	N
Handgun Violation (Felony Within 15 Yrs)	31	31
Identity Deception	1	1
Incest	1	.	.	.	1
Intimidation	9	4	.	.	1	.	.	14
Invasion Of Privacy	1	1
Maintaining Common Nuisance	3	3
Make False Sales Doc	1	1
Manufacture Methamphetamine	.	.	.	2	2
Murder	10	10
Neglect Of A Dependent	3	2	.	1	.	.	.	6
Neglect Of A Dependent Resulting in Serious Injury	.	.	2	2
Neglect Of Dependent Resulting In Death	1	1
Non Support Of Dependent Child	2	1	.	.	1	3	.	7
Obliterating Handgun I.D.	1	1
Obstruction Of Justice	1	1
Operate Vehicle After Suspended For Life	25	25
Operating Vehicle Intoxicated	1
Operating Vehicle Intoxicated Resulting in Death	.	.	.	2	1	3
Operating Vehicle While Intoxicated - Prior Conviction	8	8
Operating Vehicle While Intoxicated-Previous Conviction	1	.	.	.	2	.	3
Operating Vehicle-Habit Traffic Violator	1	1
Possession Of A Controlled Substance	1	.	.	1
Possession Of Child Pornography	2	2
Possession Of Cocaine Or Narcotic Drug	.	.	1	3	10	8	.	.	.	1	.	23
Possession Of Dangerous Device	.	.	.	1	1	2
Possession Of Methamphetamine	.	.	8	12	27	25	72
Possession Of Syringes Or Needles	3	10	13
Possession Or Use Of Legend Drug	1	1
Promoting Prostitution Under Age 18	.	.	.	1	1
Rape	.	.	6	.	.	.	1	3	.	.	.	10
Reckless Homicide	3	3
Residential Entry	3	3
Resisting Law Enforcement	7	7
Robbery	.	3	25	.	15	.	.	19	6	.	.	68
Sexual Misconduct With A Minor	.	.	.	3	4	.	.	5	3	.	.	15
Stalking	1	1	2

Note: 3 current admissions have missing sentencing data due to processing or because of safekeeper status.

INDIANA DEPARTMENT OF CORRECTION

August 2019 Admissions

by Most Serious Offense

Most Serious Offense	F1	F2	F3	F4	F5	F6	FA	FB	FC	FD	Murder	N
Strangulation	5	.	.	.	1	.	6
Theft,Receiving Stolen Property	4	15	.	.	.	3	.	22
Trafficking With An Inmate	4	4
Unlawful Firearm Poss By Serious Felon	.	.	.	27	.	.	.	8	.	.	.	35
Voluntary Manslaughter	.	6	2	.	.	.	8
	11	66	93	153	327	137	14	135	34	12	10	992

Note: 3 current admissions have missing sentencing data due to processing or because of safekeeper status.

INDIANA DEPARTMENT OF CORRECTION
ADULT OFFENDERS
by County of Commitment
for September 2019
Snapshot date: 09/01/2019

County of Commit	Department of Correction	**Community Corrections Programs	Local Jail Holds		COUNTY TOTALS
			DOC Contract	Felony Level 6 Diversions	
Adams	119	128	4	38	289
Allen	1,602	545	14	120	2,281
Bartholomew	293	139	3	49	484
Benton*	23	0	1	10	34
Blackford	61	36	6	5	108
Boone	147	337	2	19	505
Brown	38	20	0	20	78
Carroll	71	14	0	0	85
Cass	265	102	6	46	419
Clark	223	147	2	12	384
Clay	71	179	4	43	297
Clinton	173	77	10	36	296
Crawford	23	150	0	6	179
Daviess	104	123	0	4	231
Dearborn	407	82	9	43	541
Decatur	222	82	2	12	318
DeKalb	194	72	1	51	318
Delaware	381	697	6	6	1,090
Dubois	111	189	1	2	303
Elkhart	1,487	437	15	45	1,984
Fayette	184	144	2	33	363
Floyd	201	64	1	37	303
Fountain	41	77	2	0	120
Franklin*	74	0	0	9	83
Fulton	85	87	3	13	188
Gibson	137	42	8	20	207
Grant	385	122	5	11	523
Greene	141	38	1	19	199
Hamilton	324	296	1	60	681
Hancock	144	243	1	118	506
Harrison	141	87	0	9	237
Hendricks	245	148	6	66	465
Henry	242	73	1	11	327
Howard	354	264	0	57	675
Huntington	363	43	1	46	453
Jackson	240	72	6	24	342
Jasper	103	53	0	5	161
Jay	183	12	2	12	209
Jefferson	191	743	3	15	952
Jennings	107	52	1	94	254
Johnson	409	164	6	70	649
Knox	58	139	0	5	202
Kosciusko	284	133	4	92	513
LaGrange	65	20	0	21	106
Lake	1,036	335	13	56	1,440
LaPorte	370	378	4	0	752
Lawrence	210	109	3	6	328
Madison	1,318	298	10	8	1,634
Marion	5,418	5,341	33	340	11,132
Marshall	214	117	11	22	364
Martin	45	38	0	5	88
Miami	72	39	0	8	119
Monroe	330	644	1	11	986
Montgomery	185	33	2	15	235
Morgan	209	59	3	35	306
Newton*	43	0	0	5	48
Noble	138	121	3	25	287
Ohio	49	4	1	0	54
Orange	149	13	0	10	172
Owen	59	394	1	0	454
Parke	53	7	1	2	63
Perry	85	93	0	5	183
Pike	58	40	2	8	108
Porter	222	70	4	6	302
Posey	86	37	0	8	131
Pulaski	33	20	0	9	62
Putnam	75	43	1	8	127
Randolph	51	26	0	11	88
Ripley	192	49	1	24	266
Rush	76	73	3	9	161
St Joseph	1,074	84	4	17	1,179

*Counties that are not participating in Community Corrections

** Community Corrections data as of 09/06/19

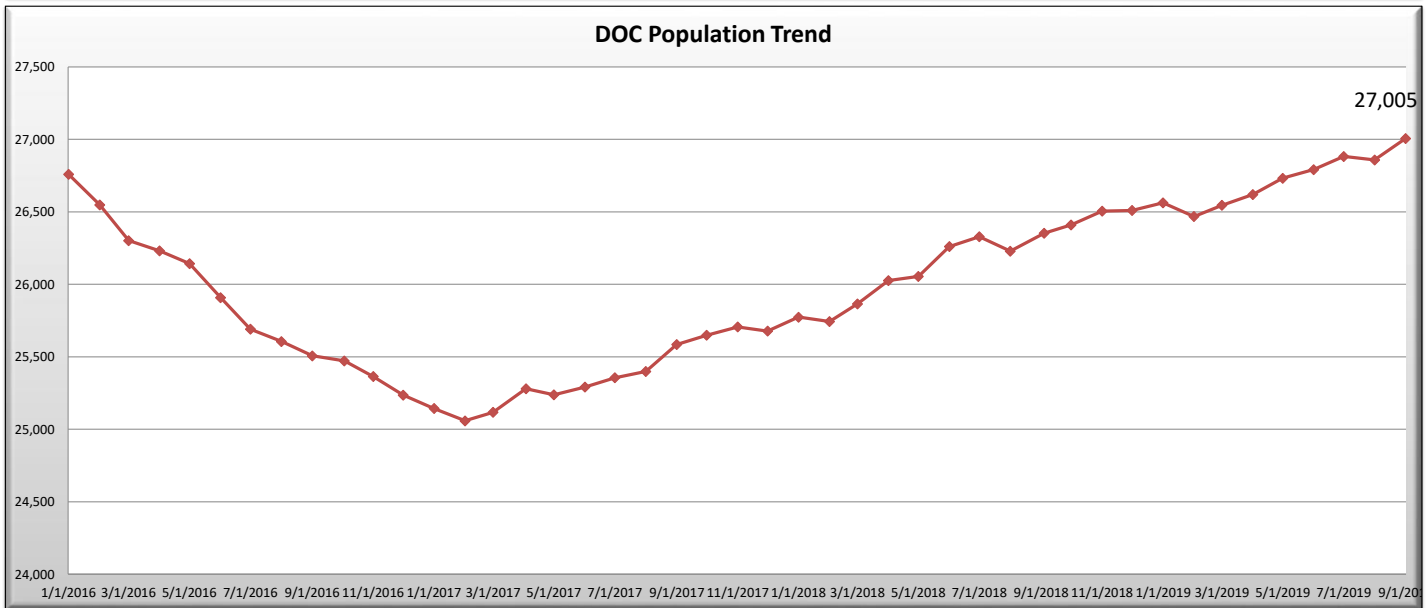
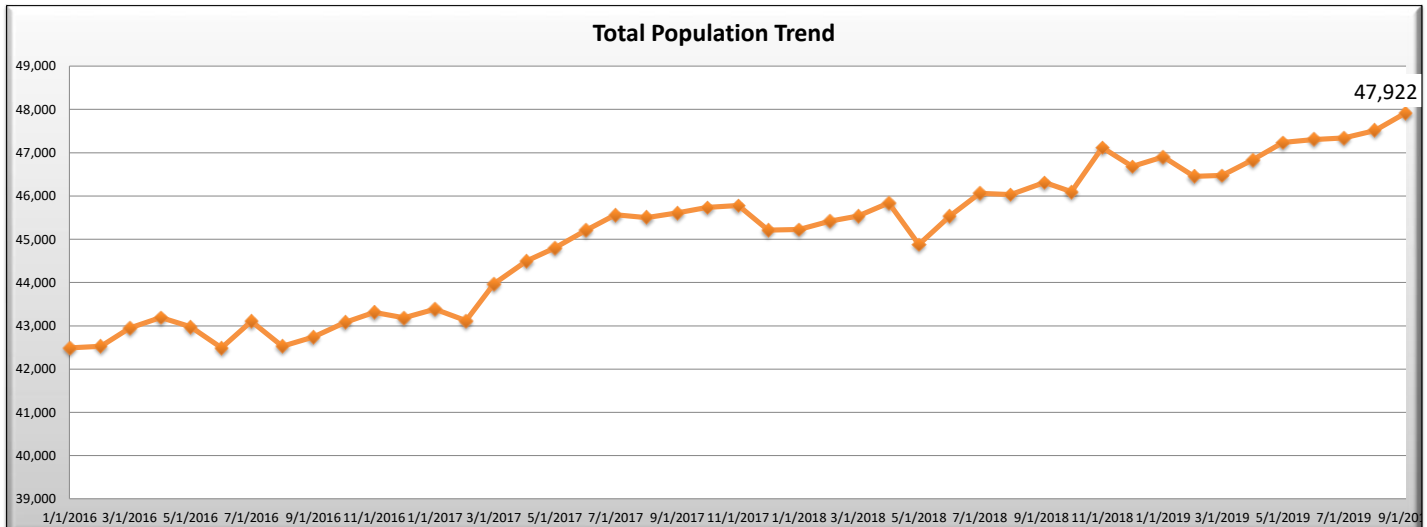
INDIANA DEPARTMENT OF CORRECTION
ADULT OFFENDERS
by County of Commitment
for September 2019
Snapshot date: 09/01/2019

County of Commit	Department of Correction	**Community Corrections Programs	Local Jail Holds		COUNTY TOTALS
			DOC Contract	Felony Level 6 Diversions	
Scott	191	145	4	17	357
Shelby	299	78	0	8	385
Spencer	43	257	4	72	376
Starke	72	57	0	1	130
Steuben	105	74	0	30	209
Sullivan	56	25	1	19	101
Switzerland	33	7	0	4	44
Tippecanoe	791	529	14	32	1,366
Tipton	15	425	0	1	441
Union	24	34	0	9	67
Vanderburgh	989	255	24	170	1,438
Vermillion	80	35	1	13	129
Vigo	442	271	8	4	725
Wabash	194	77	0	44	315
Warren	18	8	2	28	56
Warrick	76	23	0	18	117
Washington	135	121	2	19	277
Wayne	447	52	8	60	567
Wells	192	45	3	12	252
White	68	34	1	13	116
Whitley	141	261	1	12	415
Missing	28	0	0	0	28
TOTALS	27,005	17,950	314	2,653	47,922
			2,967		

*Counties that are not participating in Community Corrections
** Community Corrections data as of 09/06/19

INDIANA DEPARTMENT OF CORRECTION
 ADULT OFFENDERS
 Population Trend Summary
 for September 2019
 Snapshot date: 09/01/2019

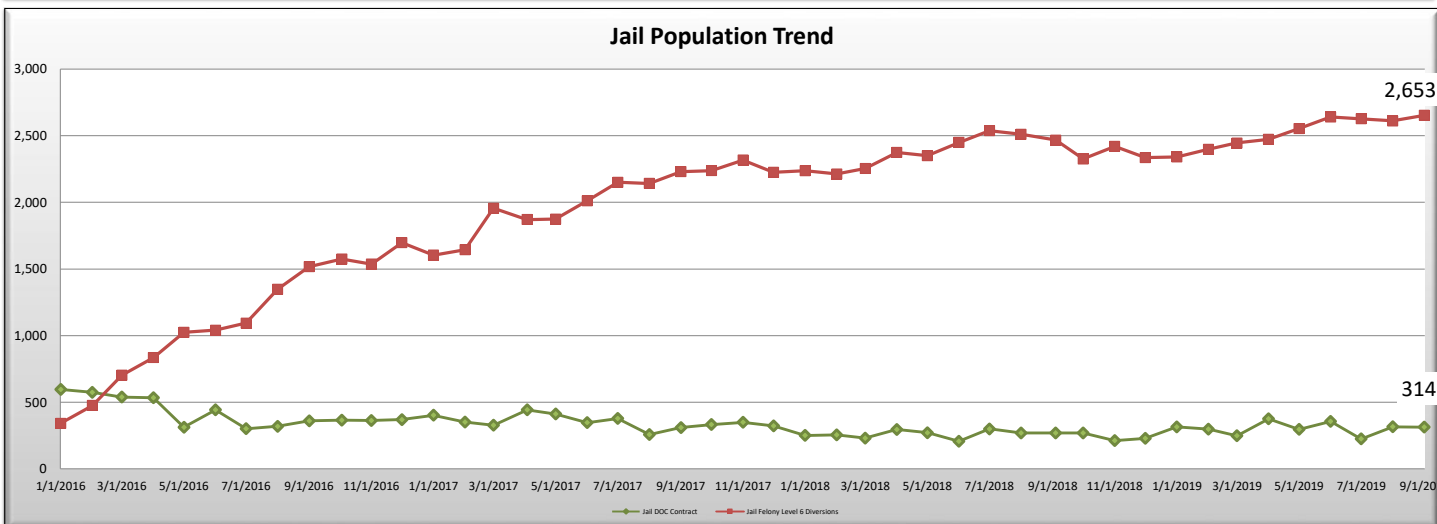
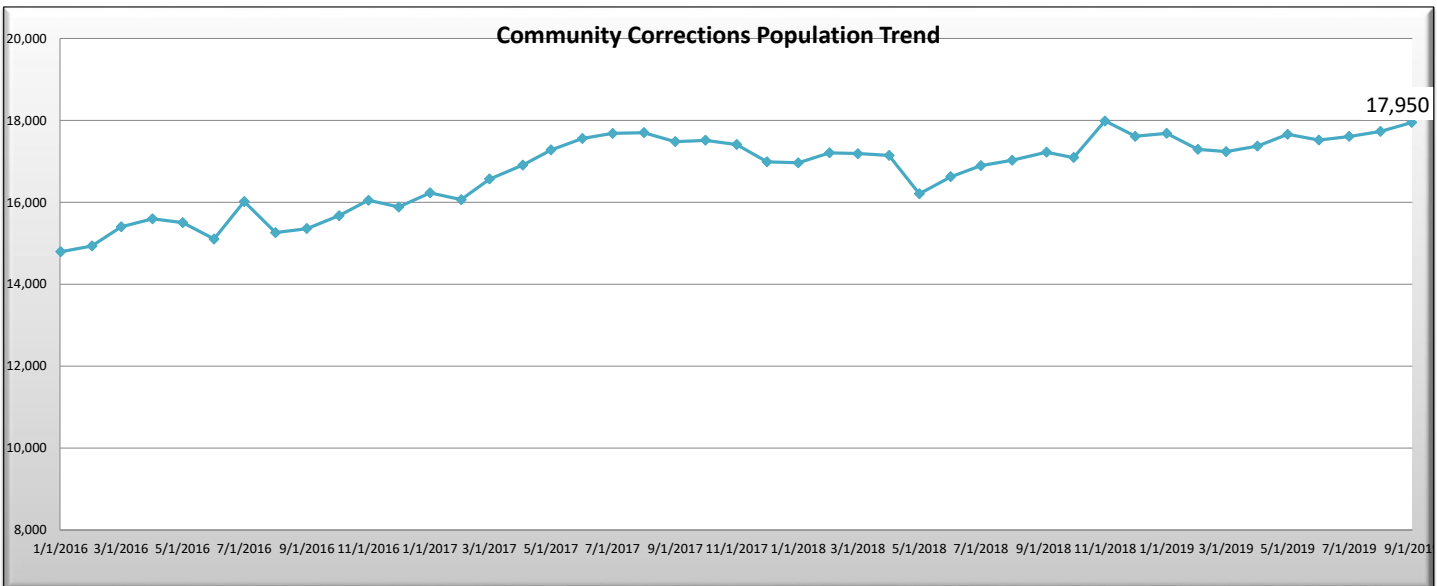
Date	DOC Adult	Community Corrections	Jail DOC Contract	Jail Felony Level 6 Diversions	Total
1/1/2018	25,773	16,964	251	2,237	45,225
2/1/2018	25,743	17,207	255	2,213	45,418
3/1/2018	25,865	17,187	231	2,254	43,708
4/1/2018	26,025	17,143	295	2,374	42,976
5/1/2018	26,054	16,205	271	2,350	44,880
6/1/2018	26,260	16,623	208	2,449	45,540
7/1/2018	26,328	16,894	300	2,538	46,060
8/1/2018	26,228	17,026	269	2,510	46,033
9/1/2018	26,352	17,223	270	2,467	46,312
10/1/2018	26,409	17,093	270	2,325	46,097
11/1/2018	26,505	17,984	212	2,420	47,121
12/1/2018	26,510	17,609	230	2,336	46,685
1/1/2019	26,562	17,685	315	2,341	46,903
2/1/2019	26,468	17,291	298	2,398	46,455
3/1/2019	26,545	17,235	249	2,445	46,474
4/1/2019	26,619	17,373	376	2,473	46,841
5/1/2019	26,731	17,659	297	2,554	47,241
6/1/2019	26,791	17,521	356	2,640	47,308
7/1/2019	26,881	17,606	225	2,627	47,339
8/1/2019	26,858	17,730	316	2,611	47,515
9/1/2019	↑ 27,005	↑ 17,950	↓ 314	↑ 2,653	↑ 47,922



Jail Felony Level 6 Diversions= F6 offenders that are housed in a county jail and serving time locally

INDIANA DEPARTMENT OF CORRECTION
ADULT OFFENDERS
Population Trend Summary
for September 2019
Snapshot date: 09/01/2019

Date	DOC Adult	Community Corrections	Jail DOC Contract	Jail Felony Level 6 Diversions	Total
1/1/2018	25,773	16,964	251	2,237	45,225
2/1/2018	25,743	17,207	255	2,213	45,418
3/1/2018	25,865	17,187	231	2,254	43,708
4/1/2018	26,025	17,143	295	2,374	42,976
5/1/2018	26,054	16,205	271	2,350	44,880
6/1/2018	26,260	16,623	208	2,449	45,540
7/1/2018	26,328	16,894	300	2,538	46,060
8/1/2018	26,228	17,026	269	2,510	46,033
9/1/2018	26,352	17,223	270	2,467	46,312
10/1/2018	26,409	17,093	270	2,325	46,097
11/1/2018	26,505	17,984	212	2,420	47,121
12/1/2018	26,510	17,609	230	2,336	46,685
1/1/2019	26,562	17,685	315	2,341	46,903
2/1/2019	26,468	17,291	298	2,398	46,455
3/1/2019	26,545	17,235	249	2,445	46,474
4/1/2019	26,619	17,373	376	2,473	46,841
5/1/2019	26,731	17,659	297	2,554	47,241
7/1/2019	26,881	17,606	225	2,627	47,339
8/1/2019	26,858	17,730	316	2,611	47,515
9/1/2019	↑ 27,005	↑ 17,950	↓ 314	↑ 2,653	↑ 47,922



Jail Felony Level 6 Diversions= F6 offenders that are housed in a county jail and serving time locally

INDIANA DEPARTMENT OF CORRECTION
by Facility and Highest Felony Classification
for September 2019
Snapshot date: 09/01/2019

Minimum Security - Adult MALE																
Facility Name	Beds	Offenders	% Capacity	Murder	FA	FB	FC	FD	F1	F2	F3	F4	F5	F6	HO	
Chain O'Lakes	102	102	100.0%	0	8	17	3	2	0	1	6	12	43	10	0	
Edinburgh	344	341	99.1%	0	16	41	9	5	0	4	14	72	139	41	0	
Miami - MCA	204	201	98.5%	16	28	51	5	3	0	4	5	27	50	12	0	
New Castle - NCA	204	200	98.0%	0	12	33	9	2	0	7	4	30	82	21	0	
Pendleton - IRO	220	216	98.2%	22	39	33	4	1	0	3	12	27	58	17	0	
Westville - WCA	379	353	93.1%	7	26	67	14	3	0	8	25	59	109	34	1	
Wabash Valley - WVA	198	193	97.5%	0	3	22	5	2	0	6	9	54	74	17	1	
Sub-Total	1,651	1,606	97.3%	45	132	264	49	18	0	33	75	281	555	152	2	

Re-Entry & Work Release - Adult MALE																
Facility Name	Beds	Offenders	% Capacity	Murder	FA	FB	FC	FD	F1	F2	F3	F4	F5	F6	HO	
Bartholomew Co. Re-Entry	20	1	5.0%	0	0	0	0	0	0	0	0	0	1	0	0	
Chain O'Lakes Re-Entry	38	33	86.8%	0	1	3	1	0	0	0	1	6	20	1	0	
Duval Center Re-Entry	40	3	7.5%	0	1	2	0	0	0	0	0	0	0	0	0	
Lake Co. Re-Entry	10	6	60.0%	0	1	2	0	0	0	0	0	0	3	0	0	
South Bend Re-Entry	193	180	93.3%	13	32	39	8	2	0	0	12	23	37	14	0	
VOA/Hope Hall Re-Entry	25	18	72.0%	0	2	7	1	0	0	0	1	4	2	1	0	
Starke Co. PI - TC	48	36	75.0%	0	2	4	1	0	0	0	3	4	17	5	0	
Sub-Total	374	277	74.1%	13	39	57	11	2	0	0	17	37	80	21	0	

Medium Security - Adult MALE																
Facility Name	Beds	Offenders	% Capacity	Murder	FA	FB	FC	FD	F1	F2	F3	F4	F5	F6	HO	
Branchville	1,485	1,459	98.2%	19	57	244	44	9	0	86	196	283	389	132	0	
Correctional Industrial	1,495	1,463	97.9%	73	236	337	42	5	11	132	203	137	223	64	0	
Indiana State Prison ISO	385	383	99.5%	30	65	57	18	3	0	2	43	43	103	19	0	
Plainfield	1,696	1,504	88.7%	65	136	313	65	8	0	47	164	221	378	107	0	
Putnamville	2,510	2,153	85.8%	53	113	412	78	9	0	85	236	364	626	177	0	
Heritage Trail	868	864	99.5%	1	9	71	28	7	0	22	111	139	383	93	0	
Westville	2,941	2,480	84.3%	62	229	421	109	14	1	54	290	376	745	178	1	
New Castle	2,431	2,399	98.7%	14	730	639	161	5	21	8	203	410	199	9	0	
Sub-Total	13811	12705	92.0%	317	1,575	2,494	545	60	33	436	1,446	1,973	3,046	779	1	

Note: 31 Offenders have missing sentencing data due to processing, misdemeanor, or because of safekeeper status.

INDIANA DEPARTMENT OF CORRECTION
by Facility and Highest Felony Classification
for September 2019
Snapshot date: 09/01/2019

Maximum Security - Adult MALE																
Facility Name	Beds	Offenders	% Capacity	Murder	FA	FB	FC	FD	F1	F2	F3	F4	F5	F6	HO	
Miami	2,984	2,901	97.2%	220	464	609	59	3	161	403	461	243	240	38	0	
Indiana State Prison	2,067	1,988	96.2%	690	611	257	21	3	123	91	69	57	56	10	0	
Pendleton	1,449	1,407	97.1%	464	444	173	13	1	86	61	75	35	45	10	0	
Pendleton Treatment Unit	214	174	81.3%	31	40	44	7	0	7	4	9	10	19	3	0	
ISR Secure Housing Unit	69	51	73.9%	16	7	20	2	0	1	1	2	0	1	1	0	
New Castle Annex	486	404	83.1%	46	107	111	17	0	4	11	37	25	37	9	0	
New Castle Mental Health	128	114	89.1%	17	22	25	6	1	3	2	10	7	21	0	0	
WCU Secure Housing Unit	110	103	93.6%	17	22	26	3	0	0	2	8	8	13	4	0	
Wabash Valley	1,785	1,731	97.0%	538	595	222	13	2	99	55	79	53	62	13	0	
WVS Secure Housing Unit	216	191	88.4%	32	32	54	5	0	4	6	17	18	20	3	0	
Sub-Total	9,508	9,064	95.3%	2,071	2,344	1,541	146	10	488	636	767	456	514	91	0	

Intake Facility - Adult MALE																
Reception Diag. Center	695	669	96.3%	6	12	80	21	12	7	37	65	106	245	77	1	
Sub-Total	695	669	96.3%	6	12	80	21	12	7	37	65	106	245	77	1	

Minimum Security & Re-Entry - Adult FEMALE																
Facility Name	Beds	Offenders	% Capacity	Murder	FA	FB	FC	FD	F1	F2	F3	F4	F5	F6	HO	
Madison	740	690	93.2%	5	24	78	21	2	0	41	83	163	205	68	0	
Jefferson Co. Re-Entry	72	71	98.6%	1	4	14	2	1	0	1	9	12	20	7	0	
Crane House	45	24	53.3%	0	0	2	3	0	0	0	1	9	6	3	0	
Sub-Total	857	785	91.6%	6	28	94	26	3	0	42	93	184	231	78	0	

Medium Security - Adult FEMALE																
Facility Name	Beds	Offenders	% Capacity	Murder	FA	FB	FC	FD	F1	F2	F3	F4	F5	F6	HO	
Rockville	1,041	972	93.4%	51	106	102	25	5	23	100	145	116	205	94	0	
Sub-Total	1,041	972	93.4%	51	106	102	25	5	23	100	145	116	205	94	0	

Maximum Security - Adult FEMALE																
Women's Prison	727	698	96.0%	71	64	73	16	6	15	56	80	86	150	81	0	
Rockville Intake	212	198	93.4%	0	1	15	2	1	0	14	26	33	59	47	0	
Sub-Total	939	896	95.4%	71	65	88	18	7	15	70	106	119	209	128	0	

TOTAL	28,876	26,974	93.4%	2,580	4,301	4,720	841	117	566	1,354	2,714	3,272	5,085	1,420	4
--------------	---------------	---------------	--------------	--------------	--------------	--------------	------------	------------	------------	--------------	--------------	--------------	--------------	--------------	----------

Note: 31 Offenders have missing sentencing data due to processing, misdemeanor, or because of safekeeper status.

INDIANA DEPARTMENT OF CORRECTION
ADULT OFFENDERS
by Most Serious Offense, Alphabetical
for September 2019
Snapshot date: 09/01/2019

Most Serious Offense	Murder	FA	FB	FC	FD	F1	F2	F3	F4	F5	F6	HO	Total
Accident Fail To Stop Resulting in Serious Injury or Death	.	.	1	1	21	.	.	23
Aggravated Battery	.	.	165	.	.	9	.	330	504
Aiding Inducing/Causing An Offense	.	50	61	5	.	11	24	56	30	49	2	.	288
Arson	.	14	49	.	.	.	3	2	76	.	1	.	145
Assisting A Criminal	.	.	.	3	12	2	.	17
Assisting Suicide	.	.	.	1	1
Attempt To Commit Felony	.	480	110	7	.	112	39	93	23	74	5	.	943
Auto Theft, Receiving Stolen Auto Parts	.	.	.	7	3	23	58	.	91
Battery	.	24	37	65	1	.	8	41	4	635	56	.	871
Battery By Bodily Waste	.	.	1	.	2	3
Battery To A Child Causing Death	.	4	4
Bribery	5	.	.	5
Burglary	.	251	888	145	.	30	141	49	965	599	.	.	3,068
Carjacking	.	.	33	33
Carrying Handgun Without License	.	.	.	6	6
Causing Suicide	.	.	1	1
Check Deception	1	1	.	2
Check Fraud	.	.	.	1	3	1	3	.	8
Child Exploitation	.	.	.	11	1	.	.	.	12	32	.	.	56
Child Molesting	.	1,393	378	113	.	302	5	133	292	.	.	.	2,616
Child Possession of Firearm	2	.	.	2
Child Seduction	.	.	.	2	6	.	.	8
Child Solicitation	.	.	1	4	1	.	.	.	15	33	.	.	54
Conspiracy	.	99	75	5	.	8	62	60	35	57	2	.	403
Contributing To The Delinquency Of Minor	1	.	1
Controlled Substance Registration	.	.	.	1	1	3	.	5
Conversion	5	.	.	5
Corrupt Business Influence	.	.	.	11	44	.	.	55
Criminal Confinement	.	.	117	13	3	.	9	107	.	107	8	.	364
Criminal Deviate Conduct	.	135	74	209
Criminal Gang Enhancement	1	1
Criminal Recklessness	.	.	.	10	3	47	12	.	72
Criminal Trespass	1	.	1
Dangerous Control Of A Handgun	1	.	.	1
Deal Sub Represented To Be Controlled Sub	1	.	1
Dealing In Cocaine Or Narcotic Drug	.	647	487	.	.	.	315	204	276	238	.	.	2,167
Dealing In Marijuana, Hash, or Hash Oil	.	.	.	1	20	5	.	26
Dealing In Methamphetamine	.	194	444	.	.	.	518	351	504	355	.	.	2,366
Dealing In Schedule I, II, or III Controlled Substance	.	72	268	.	.	.	18	19	27	24	.	.	428
Dealing In Schedule IV Controlled Substance	.	.	6	8	.	.	.	8	2	4	.	.	28
Dealing Possessing Look-Alike Substance	.	.	.	4	1	27	20	.	52
Dealing Substance Represented To Be Controlled Substance	1	1
Disarming A Law Enforcement Officer	.	.	.	1	.	.	.	2	.	14	.	.	17

Note: 31 offenders have missing sentencing data due to processing or because of safekeeper status.

INDIANA DEPARTMENT OF CORRECTION
ADULT OFFENDERS
by Most Serious Offense, Alphabetical
for September 2019
Snapshot date: 09/01/2019

Most Serious Offense	Murder	FA	FB	FC	FD	F1	F2	F3	F4	F5	F6	HO	Total
Dissemination Of Matter Harmful To Minor	2	.	2
Domestic Battery	1	234	52	.	287
Domestic Battery Resulting in Death Under 14	1	1
Domestic Battery with Serious Bodily Injury Under Age 14	4	4
Driving Whl/Suspended Resulting In Death	1	.	.	1
Escape	4	108	138	.	250
Fail To Return To Accident Resulting in Serious Injury	23	23
Fail To Stop After Accident - Operating Vehicle Intoxicated	.	.	5	5
Failure Of Sex Offender To Possess Id	1	1
Failure To Appear	2	.	2
Failure To Register As A Sex Offender	.	.	.	9	162	10	.	181
Failure To Return Lawful Detention/Escape	.	.	8	9	2	19
Felon Fraud in Offer	1	.	.	.	1
Firearm Within 1 Mile School Property Without License	.	.	.	7	7
Forgery,Counterfeiting,Application Fraud	.	.	.	97	29	.	126
Fraud	1	17	.	18
Fraud On A Financial Institution	.	.	.	10	86	.	.	96
Habitual Offender	1	.	1
Habitual Offender Substance Abuse	1	1
Habitual Substance Offender	3	3
Habitual Vehicular Subst Offender	1	1
Handgun Violation	.	.	.	5	348	.	.	353
Home Improvement Fraud Offenses	.	.	.	2	2	.	.	4
Human Sexual Trafficking	.	.	4	.	.	.	1	2	1	.	.	.	8
Identity Deception	1	1	8	.	10
Incest	.	.	20	5	5	5	.	.	35
Inmate Fraud	1	.	.	1
Insurance Fraud	1	.	.	1
Intimidation	.	.	.	10	2	123	24	.	159
Invasion Of Privacy	7	.	7
Involuntary Manslaughter	5	.	.	5
Kidnapping	.	84	9	19	.	9	1	.	122
Maintaining Common Nuisance	2	24	.	26
Make False Sales Doc	1	.	1
Manufacture Methamphetamine	4	14	.	.	.	18
Manufacturing Methamphetamine	1	1
Mischief	1	1	.	2
Murder	2,580	2,580
Neglect Of A Dependent	.	.	25	5	33	8	.	71
Neglect Of A Dependent Resulting in Serious Injury	72	72
Neglect Of Dependent Resulting In Death	.	57	.	.	.	38	95
Non Support Of Dependent Child	.	.	.	61	8	20	13	.	102
Obliterating Handgun I.D.	16	.	.	16

Note: 31 offenders have missing sentencing data due to processing or because of safekeeper status.

INDIANA DEPARTMENT OF CORRECTION
ADULT OFFENDERS
by Most Serious Offense, Alphabetical
for September 2019
Snapshot date: 09/01/2019

Most Serious Offense	Murder	FA	FB	FC	FD	F1	F2	F3	F4	F5	F6	HO	Total
Obstruction Of Justice	1	9	5	.	15
Operate Vehicle After Suspended For Life	.	.	.	23	379	.	.	402
Operating Vehicle Intoxicated	3	.	.	3
Operating Vehicle Intoxicated Resulting in Death	.	.	28	2	62	25	.	.	117
Operating Vehicle Intoxicated Resulting in Serious Bodily Injury	.	.	.	2	2	15	5	.	24
Operating Vehicle Intoxicated w/ Previous Conviction	.	.	.	1	1
Operating Vehicle Intoxicated-Prior Conviction	6	26	.	32
Operating Vehicle While Intoxicated - Endangering Person	2	2
Operating Vehicle With Schedule I in Body - Causing Death	.	.	.	1	1
Operating Vehicle With Schedule I,II in Body - Causing Death	1	.	.	.	1
Operating Vehicle-Habit Traffic Violator	.	.	.	1	5	26	.	32
Opererating Vehicle While Intoxicated - Prior Conviction	70	.	70
Perjury	1	.	1
Pharmacy Robbery	3	.	.	.	3
Possess Chemical Reagents Or Precursors	.	.	.	9	9
Possess Destructive Device Or Explosive	.	1	7	.	.	1	.	.	9
Possess Of Precursors	1	2	.	3
Possess of Precursors	1	.	.	1
Possession Of A Controlled Substance	.	.	1	5	10	2	.	18
Possession Of A Machine Gun Or Bomb	1	.	.	1
Possession Of Child Pornography	19	1	.	20
Possession Of Cocaine Or Narcotic Drug	.	38	40	13	6	.	.	42	58	136	91	.	424
Possession Of Dangerous Device	8	7	.	.	15
Possession Of Marijuana, Hash, Hash Oil	2	.	2
Possession Of Methamphetamine	.	4	41	11	1	.	.	132	169	364	247	.	969
Possession Of Syringes Or Needles	15	91	.	106
Possession Or Use Of Legend Drug	.	.	.	1	6	12	.	19
Prisoner Poss. Dangerous Device/Material	.	.	10	10
Promoting Prostitution	.	.	.	3	6	.	.	9
Promoting Prostitution Under Age 18	.	.	4	1	.	.	.	5
Prostitution	1	.	1
Rape	.	244	130	.	.	56	.	115	545
Reckless Homicide	.	.	.	8	34	.	.	42
Removing, Damaging, Or Altering a VIN	.	.	.	1	1
Residential Entry	1	30	.	31
Resisting Law Enforcement	.	.	4	1	4	.	1	11	.	10	65	.	96
Robbery	.	225	755	62	.	.	101	833	.	251	.	.	2,227
Sale Of Unregistered Security	.	.	.	2	2

Note: 31 offenders have missing sentencing data due to processing or because of safekeeper status.

INDIANA DEPARTMENT OF CORRECTION
ADULT OFFENDERS
by Most Serious Offense, Alphabetical
for September 2019
Snapshot date: 09/01/2019

Most Serious Offense	Murder	FA	FB	FC	FD	F1	F2	F3	F4	F5	F6	HO	Total
Sex Predator Unlawful Job Near Children	1	.	.	1
Sexual Battery	.	.	.	1	5	.	.	.	10	.	.	.	16
Sexual Misconduct With A Minor	.	3	185	31	1	.	.	.	144	71	.	.	435
Sexual Misconduct w/ Service Provider	1	.	.	1
Stalking	.	.	4	4	1	.	.	.	6	40	3	.	58
Strangulation	2	2	14	.	18
Synthetic Identity Deception	6	.	6
Terroristic Mischief	1	.	.	1
Theft,Receiving Stolen Property	.	.	.	2	26	36	201	.	265
Trafficking With An Inmate	.	.	.	7	58	.	.	65
Unlawful Firearm Poss By Serious Felon	.	.	221	519	.	.	.	740
Vicarious Sexual Gratification	.	.	2	1	4	1	.	.	8
Viol/Failure Of Carriers Duty To Warn	1	1
Voluntary Manslaughter	.	282	37	.	.	.	91	410
Welfare Fraud	.	.	.	6	3	9
	2,580	4,301	4,720	841	117	566	1,354	2,714	3,272	5,085	1,420	4	26,974

Note: 31 offenders have missing sentencing data due to processing or because of safekeeper status.

INDIANA DEPARTMENT OF CORRECTION
ADULT OFFENDERS
by Most Serious Offense, Ranked
for September 2019
Snapshot date: 09/01/2019

Most Serious Offense	Murder	FA	FB	FC	FD	F1	F2	F3	F4	F5	F6	HO	Total
Burglary	.	251	888	145	.	30	141	49	965	599	.	.	3,068
Child Molesting	.	1,393	378	113	.	302	5	133	292	.	.	.	2,616
Murder	2,580	2,580
Dealing In Methamphetamine	.	194	444	.	.	.	518	351	504	355	.	.	2,366
Robbery	.	225	755	62	.	.	101	833	.	251	.	.	2,227
Dealing In Cocaine Or Narcotic Drug	.	647	487	.	.	.	315	204	276	238	.	.	2,167
Possession Of Methamphetamine	.	4	41	11	1	.	.	132	169	364	247	.	969
Attempt To Commit Felony	.	480	110	7	.	112	39	93	23	74	5	.	943
Battery	.	24	37	65	1	.	8	41	4	635	56	.	871
Unlawful Firearm Poss By Serious Felon	.	.	221	519	.	.	.	740
Rape	.	244	130	.	.	56	.	115	545
Aggravated Battery	.	.	165	.	.	9	.	330	504
Sexual Misconduct With A Minor	.	3	185	31	1	.	.	.	144	71	.	.	435
Dealing In Schedule I, II, or III Controlled Substance	.	72	268	.	.	.	18	19	27	24	.	.	428
Possession Of Cocaine Or Narcotic Drug	.	38	40	13	6	.	.	42	58	136	91	.	424
Voluntary Manslaughter	.	282	37	.	.	.	91	410
Conspiracy	.	99	75	5	.	8	62	60	35	57	2	.	403
Operate Vehicle After Suspended For Life	.	.	.	23	379	.	.	402
Criminal Confinement	.	.	117	13	3	.	9	107	.	107	8	.	364
Handgun Violation	.	.	.	5	348	.	.	353
Aiding Inducing/Causing An Offense	.	50	61	5	.	11	24	56	30	49	2	.	288
Domestic Battery	1	234	52	.	287
Theft,Receiving Stolen Property	.	.	.	2	26	36	201	.	265
Escape	4	108	138	.	250
Criminal Deviate Conduct	.	135	74	209
Failure To Register As A Sex Offender	.	.	.	9	162	10	.	181
Intimidation	.	.	.	10	2	123	24	.	159
Arson	.	14	49	.	.	.	3	2	76	.	1	.	145
Forgery,Counterfeiting,Application Fraud	.	.	.	97	29	.	126
Kidnapping	.	84	9	19	.	9	1	.	122
Operating Vehicle Intoxicated Resulting in Death	.	.	28	2	62	25	.	.	117
Possession Of Syringes Or Needles	15	91	.	106
Non Support Of Dependent Child	.	.	.	61	8	20	13	.	102
Fraud On A Financial Institution	.	.	.	10	86	.	.	96
Resisting Law Enforcement	.	.	4	1	4	.	1	11	.	10	65	.	96
Neglect Of Dependent Resulting In Death	.	57	.	.	.	38	95
Auto Theft, Receiving Stolen Auto Parts	.	.	.	7	3	23	58	.	91
Criminal Recklessness	.	.	.	10	3	47	12	.	72
Neglect Of A Dependent Resulting in Serious Injury	72	72
Neglect Of A Dependent	.	.	25	5	33	8	.	71
Opererating Vehicle While Intoxicated - Prior Conviction	70	.	70

Note: 31 offenders have missing sentencing data due to processing or because of safekeeper status.

INDIANA DEPARTMENT OF CORRECTION
ADULT OFFENDERS
by Most Serious Offense, Ranked
for September 2019
Snapshot date: 09/01/2019

Most Serious Offense	Murder	FA	FB	FC	FD	F1	F2	F3	F4	F5	F6	HO	Total
Trafficking With An Inmate	.	.	.	7	58	.	.	65
Stalking	.	.	4	4	1	.	.	.	6	40	3	.	58
Child Exploitation	.	.	.	11	1	.	.	.	12	32	.	.	56
Corrupt Business Influence	.	.	.	11	44	.	.	55
Child Solicitation	.	.	1	4	1	.	.	.	15	33	.	.	54
Dealing Possessing Look-Alike Substance	.	.	.	4	1	27	20	.	52
Reckless Homicide	.	.	.	8	34	.	.	42
Incest	.	.	20	5	5	5	.	.	35
Carjacking	.	.	33	33
Operating Vehicle Intoxicated-Prior Conviction	6	26	.	32
Operating Vehicle-Habit Traffic Violator	.	.	.	1	5	26	.	32
Residential Entry	1	30	.	31
Dealing In Schedule IV Controlled Substance	.	.	6	8	.	.	.	8	2	4	.	.	28
Dealing In Marijuana, Hash, or Hash Oil	.	.	.	1	20	5	.	26
Maintaining Common Nuisance	2	24	.	26
Operating Vehicle Intoxicated Resulting in Serious Bodily Injury	.	.	.	2	2	15	5	.	24
Accident Fail To Stop Resulting in Serious Injury or Death	.	.	1	1	21	.	.	23
Fail To Return To Accident Resulting in Serious Injury	23	23
Possession Of Child Pornography	19	1	.	20
Failure To Return Lawful Detention/Escape	.	.	8	9	2	19
Possession Or Use Of Legend Drug	.	.	.	1	6	12	.	19
Fraud	1	17	.	18
Manufacture Methamphetamine	4	14	.	.	.	18
Possession Of A Controlled Substance	.	.	1	5	10	2	.	18
Strangulation	2	2	14	.	18
Assisting A Criminal	.	.	.	3	12	2	.	17
Disarming A Law Enforcement Officer	.	.	.	1	.	.	.	2	.	14	.	.	17
Obliterating Handgun I.D.	16	.	.	16
Sexual Battery	.	.	.	1	5	.	.	.	10	.	.	.	16
Obstruction Of Justice	1	9	5	.	15
Possession Of Dangerous Device	8	7	.	.	15
Identity Deception	1	1	8	.	10
Prisoner Poss. Dangerous Device/Material	.	.	10	10
Possess Chemical Reagents Or Precursors	.	.	.	9	9
Possess Destructive Device Or Explosive	.	1	7	.	.	1	.	.	9
Promoting Prostitution	.	.	.	3	6	.	.	9
Welfare Fraud	.	.	.	6	3	9

INDIANA DEPARTMENT OF CORRECTION
ADULT OFFENDERS
by Most Serious Offense, Ranked
for September 2019
Snapshot date: 09/01/2019

Most Serious Offense	Murder	FA	FB	FC	FD	F1	F2	F3	F4	F5	F6	HO	Total
Check Fraud	.	.	.	1	3	1	3	.	8
Child Seduction	.	.	.	2	6	.	.	8
Human Sexual Trafficking	.	.	4	.	.	.	1	2	1	.	.	.	8
Vicarious Sexual Gratification	.	.	2	1	4	1	.	.	8
Firearm Within 1 Mile School Property Without License	.	.	.	7	7
Invasion Of Privacy	7	.	7
Carrying Handgun Without License	.	.	.	6	6
Synthetic Identity Deception	6	.	6
Bribery	5	.	.	5
Controlled Substance Registration	.	.	.	1	1	3	.	5
Conversion	5	.	.	5
Fail To Stop After Accident - Operating Vehicle Intoxicated	.	.	5	5
Involuntary Manslaughter	5	.	.	5
Promoting Prostitution Under Age 18	.	.	4	1	.	.	.	5
Battery To A Child Causing Death	.	4	4
Domestic Battery with Serious Bodily Injury Under Age 14	4	4
Home Improvement Fraud Offenses	.	.	.	2	2	.	.	4
Battery By Bodily Waste	.	.	1	.	2	3
Habitual Substance Offender	3	3
Operating Vehicle Intoxicated	3	.	.	3
Pharmacy Robbery	3	.	.	.	3
Possess Of Precursors	1	2	.	3
Check Deception	1	1	.	2
Child Possession of Firearm	2	.	.	2
Dissemination Of Matter Harmful To Minor	2	.	2
Failure To Appear	2	.	2
Mischief	1	1	.	2
Operating Vehicle While Intoxicated - Endangering Person	2	2
Possession Of Marijuana, Hash, Hash Oil	2	.	2
Sale Of Unregistered Security	.	.	.	2	2
Assisting Suicide	.	.	.	1	1
Causing Suicide	.	.	1	1
Contributing To The Delinquency Of Minor	1	.	1
Criminal Gang Enhancement	1	1
Criminal Trespass	1	.	1
Dangerous Control Of A Handgun	1	.	.	1
Deal Sub Represented To Be Controlled Sub	1	.	1
Dealing Substance Represented To Be Controlled Substance	1	1
Domestic Battery Resulting in Death Under 14	1	1
Driving Whl/Suspended Resulting In Death	1	.	.	1
Failure Of Sex Offender To Possess Id	1	1

Note: 31 offenders have missing sentencing data due to processing or because of safekeeper status.

INDIANA DEPARTMENT OF CORRECTION
ADULT OFFENDERS
by Most Serious Offense, Ranked
for September 2019
Snapshot date: 09/01/2019

Most Serious Offense	Murder	FA	FB	FC	FD	F1	F2	F3	F4	F5	F6	HO	Total
Felon Fraud in Offer	1	.	.	.	1
Habitual Offender	1	.	1
Habitual Offender Substance Abuse	1	1
Habitual Vehicular Subst Offender	1	1
Inmate Fraud	1	.	.	1
Insurance Fraud	1	.	.	1
Make False Sales Doc	1	.	1
Manufacturing Methamphetamine	1	1
Operating Vehicle Intoxicated w/ Previous Conviction	.	.	.	1	1
Operating Vehicle With Schedule I in Body - Causing Death	.	.	.	1	1
Operating Vehicle With Schedule I,II in Body - Causing Death	1	.	.	.	1
Perjury	1	.	1
Possess of Precursors	1	.	.	1
Possession Of A Machine Gun Or Bomb	1	.	.	1
Prostitution	1	.	1
Removing, Damaging, Or Altering a VIN	.	.	.	1	1
Sex Predator Unlawful Job Near Children	1	.	.	1
Sexual Misconduct w/ Service Provider	1	.	.	1
Terroristic Mischief	1	.	.	1
Viol/Failure Of Carriers Duty To Warn	1	1
	2,580	4,301	4,720	841	117	566	1,354	2,714	3,272	5,085	1,420	4	26,974

Felony Levels By Facility
For Most Serious Offense
September 2019
Snapshot Date: September 1st, 2019

INDIANA DEPARTMENT OF CORRECTION
ADULT OFFENDERS
by Most Serious Offense

Branchville Correctional Facility												
Most Serious Offense	Murder	FA	FB	FC	FD	F1	F2	F3	F4	F5	F6	Total
Aggravated Battery	.	.	6	11	.	.	.	17
Aiding Inducing/Causing An Offense	.	1	4	.	.	.	1	1	1	1	.	9
Arson	.	1	3	4	.	.	8
Assisting A Criminal	1	.	1
Attempt To Commit Felony	.	9	4	.	.	.	4	6	1	5	.	29
Auto Theft, Receiving Stolen Auto Parts	1	4	5	10
Battery	.	.	1	5	.	.	1	4	.	46	9	66
Burglary	.	4	63	9	.	.	5	5	80	55	.	221
Carjacking	.	.	2	2
Check Fraud	1	1
Child Molesting	.	2	2	1	.	.	5
Conspiracy	.	4	6	1	.	.	5	10	8	4	1	39
Conversion	1	.	1
Corrupt Business Influence	2	.	2
Criminal Confinement	.	.	5	.	1	.	.	10	.	13	.	29
Criminal Recklessness	.	.	.	1	5	2	8
Dealing In Cocaine Or Narcotic Drug	.	14	27	.	.	.	20	15	19	15	.	110
Dealing In Marijuana, Hash, or Hash Oil	1	.	1
Dealing In Methamphetamine	.	8	50	.	.	.	45	58	64	24	.	249
Dealing In Schedule I, II, or III Controlled Substance	.	.	21	.	.	.	1	.	2	.	.	24
Dealing In Schedule IV Controlled Substance	1	.	1
Dealing Possessing Look-Alike Substance	2	4	6
Disarming A Law Enforcement Officer	.	.	.	1	1
Domestic Battery	20	5	25
Escape	8	14	22
Failure To Register As A Sex Offender	13	1	14
Forgery,Counterfeiting,Application Fraud	.	.	.	4	2	6
Fraud On A Financial Institution	7	.	7
Handgun Violation	.	.	.	1	22	.	23
Intimidation	.	.	.	1	9	2	12
Involuntary Manslaughter	1	.	1
Kidnapping	1	.	.	.	1
Maintaining Common Nuisance	2	2
Manufacture Methamphetamine	1	2	.	.	3
Murder	19	19

INDIANA DEPARTMENT OF CORRECTION
ADULT OFFENDERS
by Most Serious Offense

Branchville Correctional Facility												
Most Serious Offense	Murder	FA	FB	FC	FD	F1	F2	F3	F4	F5	F6	Total
Neglect Of A Dependent	.	.	1	1	.	2
Neglect Of A Dependent Resulting In Serious Injury	1	.	.	.	1
Neglect Of Dependent Resulting In Death	.	2	2
Non Support Of Dependent Child	.	.	.	7	1	8
Obliterating Handgun I.D.	6	.	6
Obstruction Of Justice	1	1	2
Operate Vehicle After Suspended For Life	.	.	.	2	34	.	36
Operating Vehicle Intoxicated	1	.	1
Operating Vehicle Intoxicated Resulting In Death	.	.	2	7	1	.	10
Operating Vehicle Intoxicated Resulting In Serious Bodily Injury	.	.	.	1	1	2
Operating Vehicle Intoxicated-Prior Conviction	1	1	2
Operating Vehicle-Habit Traffic Violator	4	4
Opererating Vehicle While Intoxicated - Prior Conviction	2	2
Possess Chemical Reagents Or Precursors	.	.	.	2	2
Possess Destructive Device Or Explosive	2	2
Possession Of A Controlled Substance	.	.	.	1	1	2
Possession Of Cocaine Or Narcotic Drug	.	2	2	1	5	10	7	27
Possession Of Dangerous Device	1	.	1
Possession Of Methamphetamine	.	.	3	1	.	.	.	22	27	36	22	111
Possession Of Syringes Or Needles	2	12	14
Possession Or Use Of Legend Drug	1	1	2
Promoting Prostitution	.	.	.	1	1
Rape	.	1	2	3
Reckless Homicide	3	.	3
Residential Entry	6	6
Resisting Law Enforcement	3	8	11
Robbery	.	3	22	3	.	.	1	50	.	19	.	98
Sexual Battery	1	1
Sexual Misconduct With A Minor	.	.	2	1	1	.	.	4
Stalking	.	.	.	2	7	.	9
Strangulation	1	1
Theft,Receiving Stolen Property	2	1	19	22
Trafficking With An Inmate	2	.	2
Unlawful Firearm Poss By Serious Felon	.	.	15	61	.	.	76
Voluntary Manslaughter	.	6	1	.	.	.	1	8
Total	19	57	244	44	9	0	86	196	283	389	132	1459

INDIANA DEPARTMENT OF CORRECTION
ADULT OFFENDERS
by Most Serious Offense

Correctional Industrial Facility												
Most Serious Offense	Murder	FA	FB	FC	FD	F1	F2	F3	F4	F5	F6	Total
Accident Fail To Stop Resulting in Serious Injury or Death	1	.	1
Aggravated Battery	.	.	18	.	.	1	.	39	.	.	.	58
Aiding Inducing/Causing An Offense	.	6	8	.	.	.	2	6	2	1	.	25
Arson	.	1	3	2	.	.	6
Assisting Suicide	.	.	.	1	1
Attempt To Commit Felony	.	28	8	.	.	2	2	1	1	5	.	47
Auto Theft, Receiving Stolen Auto Parts	.	.	.	1	3	4
Battery	.	1	1	5	.	.	1	1	.	35	3	47
Burglary	.	26	70	9	.	.	16	3	51	29	.	204
Carjacking	.	.	2	2
Carrying Handgun Without License	.	.	.	2	2
Check Fraud	1	1
Child Molesting	.	20	4	2	.	5	.	3	2	.	.	36
Conspiracy	.	12	5	.	.	1	3	7	2	3	.	33
Corrupt Business Influence	1	.	1
Criminal Confinement	.	.	12	2	.	.	.	7	.	5	1	27
Criminal Deviate Conduct	.	2	2	4
Criminal Recklessness	3	.	3
Dealing In Cocaine Or Narcotic Drug	.	64	40	.	.	.	35	8	10	12	.	169
Dealing In Methamphetamine	.	24	31	.	.	.	55	24	24	14	.	172
Dealing In Schedule I, II, or III Controlled Substance	.	5	18	1	1	.	25
Dealing In Schedule IV Controlled Substance	.	.	2	1	.	1	.	4
Dealing Possessing Look-Alike Substance	.	.	.	1	3	2	6
Disarming A Law Enforcement Officer	1	.	1	.	2
Domestic Battery	13	3	16
Escape	5	8	13
Fail To Return To Accident Resulting in Serious Injury	3	.	.	.	3
Failure To Register As A Sex Offender	.	.	.	1	7	1	9
Failure To Return Lawful Detention/Escape	.	.	1	1	2
Forgery,Counterfeiting,Application Fraud	.	.	.	8	1	9
Fraud On A Financial Institution	5	.	5
Handgun Violation	16	.	16
Identity Deception	1	1
Intimidation	6	1	7
Kidnapping	.	7	3	.	.	.	10
Manufacture Methamphetamine	1	.	.	1

INDIANA DEPARTMENT OF CORRECTION
ADULT OFFENDERS
by Most Serious Offense

Correctional Industrial Facility												
Most Serious Offense	Murder	FA	FB	FC	FD	F1	F2	F3	F4	F5	F6	Total
Manufacturing Methamphetamine	1	1
Mischief	1	1
Murder	73	73
Neglect Of A Dependent	.	.	2	1	1	4
Neglect Of A Dependent Resulting in Serious Injury	9	.	.	.	9
Neglect Of Dependent Resulting In Death	.	1	.	.	.	1	2
Non Support Of Dependent Child	.	.	.	3	2	5
Obliterating Handgun I.D.	2	.	2
Obstruction Of Justice	1	1
Operate Vehicle After Suspended For Life	.	.	.	1	14	.	15
Operating Vehicle Intoxicated Resulting in Death	.	.	3	1	.	4
Operating Vehicle Intoxicated-Prior Conviction	1	3	4
Operating Vehicle-Habit Traffic Violator	1	1
Opererating Vehicle While Intoxicated - Prior Conviction	1	1
Possess Destructive Device Or Explosive	.	1	1	2
Possession Of Cocaine Or Narcotic Drug	.	4	5	2	9	4	5	29
Possession Of Methamphetamine	.	.	3	6	5	9	7	30
Possession Of Syringes Or Needles	2	6	8
Prisoner Poss. Dangerous Device/Material	.	.	1	1
Promoting Prostitution	1	.	1
Rape	.	1	2	.	.	1	.	5	.	.	.	9
Reckless Homicide	.	.	.	1	2	.	3
Residential Entry	1	1
Resisting Law Enforcement	5	5
Robbery	.	13	66	4	.	.	10	74	.	16	.	183
Sexual Misconduct With A Minor	.	.	3	1	.	.	4
Stalking	1	1	2
Theft,Receiving Stolen Property	1	7	8
Trafficking With An Inmate	3	.	3
Unlawful Firearm Poss By Serious Felon	.	.	24	26	.	.	50
Vicarious Sexual Gratification	.	.	1	1
Voluntary Manslaughter	.	20	2	.	.	.	6	28
Total	73	236	337	42	5	11	132	203	137	223	64	1463

INDIANA DEPARTMENT OF CORRECTION
ADULT OFFENDERS
by Most Serious Offense

Chain O'Lakes Correctional Facility											
Most Serious Offense	FA	FB	FC	FD	F1	F2	F3	F4	F5	F6	Total
Accident Fail To Stop Resulting in Serious Injury or Death	1	.	1
Aiding Inducing/Causing An Offense	1	2	.	3
Battery	4	.	4
Burglary	.	4	.	.	.	1	1	4	7	.	17
Conspiracy	1	.	1
Corrupt Business Influence	4	.	4
Criminal Confinement	1	.	1
Criminal Recklessness	1	1
Dealing In Cocaine Or Narcotic Drug	2	5	2	7	5	.	21
Dealing In Marijuana, Hash, or Hash Oil	2	.	2
Dealing In Methamphetamine	4	6	1	1	7	.	19
Dealing In Schedule I, II, or III Controlled Substance	.	1	1	.	1	.	3
Domestic Battery	2	.	2
Handgun Violation	4	.	4
Identity Deception	1	1
Intimidation	1	.	1
Manufacture Methamphetamine	1	.	.	1
Non Support Of Dependent Child	2	.	2
Operate Vehicle After Suspended For Life	12	.	12
Operating Vehicle Intoxicated Resulting in Death	1	.	1
Operating Vehicle Intoxicated-Prior Conviction	.	.	.	1	1
Operating Vehicle-Habit Traffic Violator	1	1
Possession Of A Controlled Substance	.	.	1	1
Possession Of Cocaine Or Narcotic Drug	2	1	1	4
Possession Of Methamphetamine	1	.	1	.	.	.	1	2	3	4	12
Resisting Law Enforcement	1	1
Robbery	.	3	2	.	.	.	1	.	2	.	8
Theft,Receiving Stolen Property	.	.	.	1	2	3
Trafficking With An Inmate	1	.	1
Unlawful Firearm Poss By Serious Felon	2	.	.	2
Total	9	20	4	2	0	1	7	16	63	11	135

INDIANA DEPARTMENT OF CORRECTION
ADULT OFFENDERS
by Most Serious Offense

Edinburgh Correctional Facility												
Most Serious Offense	FA	FB	FC	FD	F1	F2	F3	F4	F5	F6	HO	Total
Aiding Inducing/Causing An Offense	1	1
Attempt To Commit Felony	1	.	2	.	.	3
Auto Theft, Receiving Stolen Auto Parts	.	.	.	1	1	.	2
Battery	2	.	.	2
Burglary	.	10	3	.	.	.	1	30	23	.	.	67
Child Possession of Firearm	1	.	.	1
Conspiracy	.	1	1	1	.	.	3
Criminal Confinement	1	.	.	1
Dealing In Cocaine Or Narcotic Drug	10	11	.	.	.	1	.	8	11	.	.	41
Dealing In Marijuana, Hash, or Hash Oil	1	1	.	2
Dealing In Methamphetamine	4	11	.	.	.	2	2	13	21	.	.	53
Dealing In Schedule I, II, or III Controlled Substance	2	5	2	3	.	.	12
Dealing In Schedule IV Controlled Substance	.	.	1	1
Dealing Possessing Look-Alike Substance	1	.	.	1
Domestic Battery	1	.	1
Fail To Return To Accident Resulting in Serious Injury	1	1
Felon Fraud in Offer	1	.	.	.	1
Forgery,Counterfeiting,Application Fraud	1	.	1
Fraud On A Financial Institution	.	.	1	2	.	.	3
Handgun Violation	13	.	.	13
Home Improvement Fraud Offenses	.	.	1	1	.	.	2
Intimidation	.	.	.	1	1
Neglect Of A Dependent	1	.	.	1
Non Support Of Dependent Child	.	.	2	1	3	2	.	8
Operate Vehicle After Suspended For Life	24	.	.	24
Operating Vehicle Intoxicated Resulting in Death	3	1	.	.	4
Operating Vehicle Intoxicated Resulting in Serious Bodily Injury	1	1	.	2
Operating Vehicle-Habit Traffic Violator	1	.	1
Opererating Vehicle While Intoxicated - Prior Conviction	6	.	6
Pharmacy Robbery	1	.	.	.	1
Possess Of Precursors	1	.	1
Possession Of A Controlled Substance	.	.	.	1	1
Possession Of Cocaine Or Narcotic Drug	1	1	5	3	.	10
Possession Of Methamphetamine	4	5	15	16	.	40
Possession Of Syringes Or Needles	1	3	.	4
Resisting Law Enforcement	2	.	2
Robbery	.	3	1	.	.	.	4	.	1	.	.	9
Theft,Receiving Stolen Property	.	.	.	1	1	2	.	4
Trafficking With An Inmate	3	.	.	3
Unlawful Firearm Poss By Serious Felon	7	.	.	.	7
Total	16	41	9	5	0	4	14	72	139	41	0	341

INDIANA DEPARTMENT OF CORRECTION
ADULT OFFENDERS
by Most Serious Offense

Heritage Trail Correctional Facility													
Most Serious Offense	Murder	FA	FB	FC	FD	F1	F2	F3	F4	F5	F6	HO	Total
Accident Fail To Stop Resulting in Serious Injury or Death	1	.	.	1
Aggravated Battery	.	.	3	9	12
Aiding Inducing/Causing An Offense	.	.	1	4	1	.	.	.	6
Arson	.	.	1	3	.	1	.	5
Assisting A Criminal	2	.	.	2
Attempt To Commit Felony	.	1	1	.	.	.	1	1	.	2	1	.	7
Auto Theft, Receiving Stolen Auto Parts	2	3	.	5
Battery	.	.	.	5	.	.	.	1	.	64	3	.	73
Burglary	.	.	13	3	.	.	2	3	46	36	.	.	103
Conspiracy	.	.	3	.	.	.	3	2	3	1	.	.	12
Corrupt Business Influence	.	.	.	1	3	.	.	4
Criminal Confinement	6	.	9	.	.	15
Criminal Gang Enhancement	1	1
Criminal Recklessness	5	1	.	6
Dealing In Cocaine Or Narcotic Drug	.	4	16	.	.	.	8	20	17	15	.	.	80
Dealing In Marijuana, Hash, or Hash Oil	1	.	.	1
Dealing In Methamphetamine	.	.	15	.	.	.	5	17	20	16	.	.	73
Dealing In Schedule I, II, or III Controlled Substance	.	1	7	1	1	.	.	10
Dealing In Schedule IV Controlled Substance	1	1
Dealing Possessing Look-Alike Substance	2	.	.	2
Disarming A Law Enforcement Officer	2	.	.	2
Domestic Battery	1	40	8	.	49
Domestic Battery with Serious Bodily Injury Under Age 14	1	1
Escape	1	3	12	.	16
Fail To Return To Accident Resulting in Serious Injury	2	2
Failure To Return Lawful Detention/Escape	1	1
Forgery,Counterfeiting,Application Fraud	.	.	.	2	4	.	6
Fraud On A Financial Institution	3	.	.	3
Handgun Violation	.	.	.	1	49	.	.	50
Identity Deception	1	.	1
Intimidation	.	.	.	2	8	4	.	14
Invasion Of Privacy	2	.	2
Involuntary Manslaughter	2	.	.	2
Kidnapping	.	1	1
Manufacture Methamphetamine	1	.	.	.	1
Murder	1	1
Neglect Of A Dependent Resulting in Serious Injury	1	1
Non Support Of Dependent Child	.	.	.	8	1	1	.	.	10
Obliterating Handgun I.D.	2	.	.	2

INDIANA DEPARTMENT OF CORRECTION
 ADULT OFFENDERS
 by Most Serious Offense

Heritage Trail Correctional Facility													
Most Serious Offense	Murder	FA	FB	FC	FD	F1	F2	F3	F4	F5	F6	HO	Total
Operate Vehicle After Suspended For Life	.	.	.	1	39	.	.	40

INDIANA DEPARTMENT OF CORRECTION
ADULT OFFENDERS
by Most Serious Offense

Heritage Trail Correctional Facility													
Most Serious Offense	Murder	FA	FB	FC	FD	F1	F2	F3	F4	F5	F6	HO	Total
Operating Vehicle Intoxicated Resulting in Death	1	3	.	.	4
Operating Vehicle Intoxicated Resulting in Serious Bodily Injury	2	1	.	3
Operating Vehicle Intoxicated-Prior Conviction	2	.	2
Opererating Vehicle While Intoxicated - Prior Conviction	7	.	7
Possession Of Cocaine Or Narcotic Drug	.	1	1	2	.	.	.	1	2	11	4	.	22
Possession Of Methamphetamine	.	.	.	2	.	.	.	4	6	25	11	.	48
Possession Of Syringes Or Needles	5	.	5
Possession Or Use Of Legend Drug	1	1	.	2
Reckless Homicide	6	.	.	6
Residential Entry	3	.	3
Resisting Law Enforcement	1	4	.	5
Robbery	.	.	8	1	.	.	3	37	.	12	.	.	61
Stalking	5	.	.	5
Strangulation	1	1	3	.	5
Synthetic Identity Deception	1	.	1
Theft,Receiving Stolen Property	1	6	11	.	18
Trafficking With An Inmate	2	.	.	2
Unlawful Firearm Poss By Serious Felon	.	.	2	37	.	.	.	39
Voluntary Manslaughter	.	1	1
Welfare Fraud	1	1
Total	1	9	71	28	7	0	22	111	139	383	93	0	864

INDIANA DEPARTMENT OF CORRECTION
ADULT OFFENDERS
by Most Serious Offense

Indiana State Prison												
Most Serious Offense	Murder	FA	FB	FC	FD	F1	F2	F3	F4	F5	F6	Total
Accident Fail To Stop Resulting in Serious Injury or Death	1	1	.	2
Aggravated Battery	.	.	21	21	.	.	.	42
Aiding Inducing/Causing An Offense	.	5	6	1	.	1	3	3	1	.	.	20
Arson	.	.	1	.	.	.	1	.	2	.	.	4
Attempt To Commit Felony	.	82	13	.	.	26	2	6	.	1	.	130
Auto Theft, Receiving Stolen Auto Parts	1	1	2
Battery	.	5	4	6	.	.	1	1	.	23	.	40
Bribery	1	.	1
Burglary	.	49	59	8	.	8	9	1	29	23	.	186
Carjacking	.	.	4	4
Child Molesting	.	205	13	1	.	68	.	2	4	.	.	293
Conspiracy	.	10	4	.	.	1	5	2	2	1	.	25
Corrupt Business Influence	.	.	.	1	2	.	3
Criminal Confinement	.	.	10	.	1	.	2	4	.	4	.	21
Criminal Deviate Conduct	.	20	3	23
Criminal Recklessness	1	2	.	3
Dealing In Cocaine Or Narcotic Drug	.	102	32	.	.	.	22	6	15	5	.	182
Dealing In Marijuana, Hash, or Hash Oil	1	.	1
Dealing In Methamphetamine	.	22	15	.	.	.	31	7	11	6	.	92
Dealing In Schedule I, II, or III Controlled Substance	.	4	10	.	.	.	1	.	.	1	.	16
Dealing Possessing Look-Alike Substance	1	1	2
Domestic Battery	10	1	11
Escape	5	6	11
Fail To Return To Accident Resulting in Serious Injury	3	.	.	.	3
Failure To Register As A Sex Offender	1	.	1
Failure To Return Lawful Detention/Escape	.	.	2	.	1	3
Forgery,Counterfeiting,Application Fraud	.	.	.	3	3
Fraud On A Financial Institution	3	.	3
Handgun Violation	.	.	.	1	18	.	19
Human Sexual Trafficking	.	.	1	1
Intimidation	4	.	4
Kidnapping	.	16	1	17
Maintaining Common Nuisance	2	2
Murder	720	720
Neglect Of A Dependent	.	.	2	1	.	3

INDIANA DEPARTMENT OF CORRECTION
ADULT OFFENDERS
by Most Serious Offense

Indiana State Prison												
Most Serious Offense	Murder	FA	FB	FC	FD	F1	F2	F3	F4	F5	F6	Total
Neglect Of A Dependent Resulting in Serious Injury	1	.	.	.	1
Neglect Of Dependent Resulting In Death	.	7	.	.	.	8	15
Non Support Of Dependent Child	.	.	.	3	1	.	4
Obstruction Of Justice	1	.	1
Operate Vehicle After Suspended For Life	.	.	.	2	11	.	13
Operating Vehicle Intoxicated Resulting in Death	.	.	2	1	1	1	.	5
Operating Vehicle Intoxicated Resulting in Serious Bodily Injury	1	.	1
Operating Vehicle With Schedule I in Body - Causing Death	.	.	.	1	1
Operating Vehicle-Habit Traffic Violator	1	2	3
Opererating Vehicle While Intoxicated - Prior Conviction	1	1
Possess Of Precursors	1	1
Possession Of A Controlled Substance	.	.	1	1
Possession Of Child Pornography	1	.	1
Possession Of Cocaine Or Narcotic Drug	.	6	1	1	.	.	.	2	3	4	1	18
Possession Of Dangerous Device	1	.	1
Possession Of Methamphetamine	.	.	.	1	.	.	.	2	3	9	5	20
Possession Of Syringes Or Needles	1	1
Prisoner Poss. Dangerous Device/Material	.	.	1	1
Rape	.	53	10	.	.	11	.	2	.	.	.	76
Reckless Homicide	.	.	.	2	1	.	3
Residential Entry	1	1
Resisting Law Enforcement	2	.	1	.	3
Robbery	.	38	70	6	.	.	8	47	.	9	.	178
Sexual Misconduct With A Minor	.	1	9	1	2	.	.	13
Stalking	1	.	1
Strangulation	1	1
Synthetic Identity Deception	1	1
Theft,Receiving Stolen Property	1	5	6
Trafficking With An Inmate	2	.	2
Unlawful Firearm Poss By Serious Felon	.	.	16	26	.	.	42
Voluntary Manslaughter	.	51	4	.	.	.	7	62
Total	720	676	314	39	6	123	93	112	100	159	29	2371

INDIANA DEPARTMENT OF CORRECTION
ADULT OFFENDERS
by Most Serious Offense

Indiana Women's Prison												
Most Serious Offense	Murder	FA	FB	FC	FD	F1	F2	F3	F4	F5	F6	Total
Accident Fail To Stop Resulting in Serious Injury or Death	1	.	1
Aggravated Battery	.	.	2	9	.	.	.	11
Aiding Inducing/Causing An Offense	.	5	3	.	.	1	1	4	1	5	.	20
Arson	.	1	2	.	.	.	1	.	3	.	.	7
Attempt To Commit Felony	.	6	1	.	.	2	4	2	1	6	.	22
Auto Theft, Receiving Stolen Auto Parts	1	1
Battery	.	2	.	1	25	4	32
Battery To A Child Causing Death	.	1	1
Burglary	.	1	7	1	.	2	.	.	27	12	.	50
Child Molesting	.	.	1	.	.	1	2
Conspiracy	.	3	6	.	.	1	4	3	.	2	.	19
Controlled Substance Registration	1	1
Conversion	1	.	1
Corrupt Business Influence	2	.	2
Criminal Confinement	.	.	1	1	.	.	.	3	.	.	.	5
Criminal Recklessness	2	.	2
Dealing In Cocaine Or Narcotic Drug	.	8	11	.	.	.	5	3	8	9	.	44
Dealing In Methamphetamine	.	9	14	.	.	.	28	19	25	8	.	103
Dealing In Schedule I, II, or III Controlled Substance	.	4	9	.	.	.	1	2	3	1	.	20
Dealing In Schedule IV Controlled Substance	.	.	.	1	1
Dealing Possessing Look-Alike Substance	1	.	1
Domestic Battery	6	1	7
Escape	7	17	24
Forgery,Counterfeiting,Application Fraud	.	.	.	6	6
Fraud On A Financial Institution	6	.	6
Handgun Violation	4	.	4
Identity Deception	1	1
Incest	.	.	1	1
Insurance Fraud	1	.	1
Intimidation	1	.	1
Kidnapping	1	.	1	.	2
Maintaining Common Nuisance	1	1	2
Murder	71	71
Neglect Of A Dependent	.	.	2	3	1	6

INDIANA DEPARTMENT OF CORRECTION
ADULT OFFENDERS
by Most Serious Offense

Indiana Women's Prison												
Most Serious Offense	Murder	FA	FB	FC	FD	F1	F2	F3	F4	F5	F6	Total
Neglect Of A Dependent Resulting In Serious Injury	8	.	.	.	8
Neglect Of Dependent Resulting In Death	.	11	.	.	.	8	19
Non Support Of Dependent Child	.	.	.	2	1	.	3
Operate Vehicle After Suspended For Life	6	.	6
Operating Vehicle Intoxicated Resulting In Death	.	.	1	4	.	.	5
Operating Vehicle Intoxicated Resulting In Serious Bodily Injury	1	.	1
Operating Vehicle Intoxicated-Prior Conviction	1	2	3
Opererating Vehicle While Intoxicated - Prior Conviction	3	3
Possess Chemical Reagents Or Precursors	.	.	.	1	1
Possession Of A Controlled Substance	1	1	2
Possession Of Cocaine Or Narcotic Drug	.	.	2	.	1	.	.	1	.	3	5	12
Possession Of Methamphetamine	2	10	16	21	49
Possession Of Syringes Or Needles	2	4	6
Possession Or Use Of Legend Drug	.	.	.	1	1	2
Promoting Prostitution Under Age 18	.	.	1	1
Reckless Homicide	2	.	2
Resisting Law Enforcement	2	2
Robbery	.	4	7	1	.	.	7	23	.	9	.	51
Sexual Misconduct With A Minor	1	.	1
Stalking	1	.	1
Theft,Receiving Stolen Property	2	15	17
Trafficking With An Inmate	4	.	4
Unlawful Firearm Poss By Serious Felon	.	.	1	4	.	.	5
Voluntary Manslaughter	.	9	1	.	.	.	5	15
Welfare Fraud	.	.	.	1	1
Total	71	64	73	16	6	15	56	80	86	150	81	698

INDIANA DEPARTMENT OF CORRECTION
ADULT OFFENDERS
by Most Serious Offense

Madison Correctional Facility													
Most Serious Offense	Murder	FA	FB	FC	FD	F1	F2	F3	F4	F5	F6	HO	Total
Aggravated Battery	.	.	1	1	2
Aiding Inducing/Causing An Offense	.	1	2	1	.	.	.	4	4	9	.	.	21
Arson	.	.	1	4	.	.	.	5
Attempt To Commit Felony	.	4	1	1	.	.	.	1	3	3	.	.	13
Battery	.	.	1	1	.	13	1	.	16
Burglary	.	1	12	5	.	.	1	.	41	12	.	.	72
Check Fraud	1	1
Conspiracy	.	1	6	1	.	.	4	4	3	5	.	.	24
Corrupt Business Influence	.	.	.	1	6	.	.	7
Dealing In Cocaine Or Narcotic Drug	.	5	10	.	.	.	7	14	28	26	.	.	90
Dealing In Methamphetamine	.	9	19	.	.	.	27	35	58	33	.	.	181
Dealing In Schedule I, II, or III Controlled Substance	.	4	29	.	.	.	2	4	5	5	.	.	49
Dealing In Schedule IV Controlled Substance	.	.	.	1	1	.	.	2
Dealing Possessing Look-Alike Substance	1	.	.	1
Disarming A Law Enforcement Officer	1	.	.	1
Fail To Return To Accident Resulting in Serious Injury	1	1
Forgery,Counterfeiting,Application Fraud	.	.	.	6	3	.	9
Fraud	1	.	1
Fraud On A Financial Institution	8	.	.	8
Handgun Violation	1	.	.	1
Identity Deception	1	.	.	1
Intimidation	1	.	.	1
Invasion Of Privacy	1	.	1
Maintaining Common Nuisance	2	.	2
Manufacture Methamphetamine	1	1	.	.	.	2
Murder	6	6
Neglect Of A Dependent	.	.	4	7	1	.	12
Neglect Of A Dependent Resulting in Serious Injury	3	3
Non Support Of Dependent Child	1	1	.	.	2
Obstruction Of Justice	1	.	1
Operate Vehicle After Suspended For Life	.	.	.	2	9	.	.	11
Operating Vehicle Intoxicated Resulting in Death	.	.	1	6	2	.	.	9
Operating Vehicle Intoxicated Resulting in Serious Bodily Injury	1	.	.	1
Operating Vehicle Intoxicated w/ Previous Conviction	.	.	.	1	1
Operating Vehicle Intoxicated-Prior Conviction	2	.	2
Operating Vehicle-Habit Traffic Violator	1	.	1
Opererating Vehicle While Intoxicated - Prior Conviction	2	.	2

INDIANA DEPARTMENT OF CORRECTION
ADULT OFFENDERS
by Most Serious Offense

Madison Correctional Facility													
Most Serious Offense	Murder	FA	FB	FC	FD	F1	F2	F3	F4	F5	F6	HO	Total
Possess of Precursors	1	.	.	1
Possession Of Cocaine Or Narcotic Drug	.	.	1	2	.	.	.	3	3	19	8	.	36
Possession Of Methamphetamine	.	.	1	11	18	38	19	.	87
Possession Of Syringes Or Needles	1	13	.	14
Possession Or Use Of Legend Drug	3	3	.	6
Prostitution	1	.	1
Reckless Homicide	1	.	.	1
Robbery	.	1	3	.	.	.	1	9	.	5	.	.	19
Synthetic Identity Deception	1	.	1
Theft,Receiving Stolen Property	1	4	15	.	20
Trafficking With An Inmate	7	.	.	7
Unlawful Firearm Poss By Serious Felon	1	.	.	.	1
Voluntary Manslaughter	.	2	2
Welfare Fraud	.	.	.	2	2
	6	28	92	23	3	0	42	92	175	225	75	0	761

INDIANA DEPARTMENT OF CORRECTION
ADULT OFFENDERS
by Most Serious Offense

Miami Correctional Facility												
Most Serious Offense	Murder	FA	FB	FC	FD	F1	F2	F3	F4	F5	F6	Total
Accident Fail To Stop Resulting in Serious Injury or Death	.	.	1	2	.	3
Aggravated Battery	.	.	40	.	.	2	.	86	.	.	.	128
Aiding Inducing/Causing An Offense	.	5	5	.	.	3	7	12	1	2	.	35
Arson	.	3	8	12	.	.	23
Assisting A Criminal	1	.	1
Attempt To Commit Felony	.	53	18	.	.	37	10	21	1	3	.	143
Auto Theft, Receiving Stolen Auto Parts	.	.	.	4	2	8	14
Battery	.	3	7	9	.	.	.	5	3	62	5	94
Battery By Bodily Waste	.	.	1	1
Burglary	.	43	158	17	.	6	48	11	94	37	.	414
Carjacking	.	.	5	5
Causing Suicide	.	.	1	1
Child Exploitation	.	.	.	1	1
Child Molesting	.	78	19	3	.	85	1	7	15	.	.	208
Conspiracy	.	17	11	.	.	1	15	5	1	3	.	53
Conversion	1	.	1
Corrupt Business Influence	.	.	.	1	4	.	5
Criminal Confinement	.	.	17	2	.	.	3	32	.	6	.	60
Criminal Deviate Conduct	.	4	2	6
Criminal Recklessness	.	.	.	1	5	1	7
Dealing In Cocaine Or Narcotic Drug	.	124	59	.	.	.	101	22	17	12	.	335
Dealing In Marijuana, Hash, or Hash Oil	2	.	2
Dealing In Methamphetamine	.	36	50	.	.	.	148	30	33	15	.	312
Dealing In Schedule I, II, or III Controlled Substance	.	17	38	.	.	.	6	.	.	1	.	62
Dealing In Schedule IV Controlled Substance	.	.	.	1	1
Dealing Possessing Look-Alike Substance	.	.	.	1	1
Domestic Battery	12	2	14
Domestic Battery Resulting in Death Under 14	1	1
Domestic Battery with Serious Bodily Injury Under Age 14	1	.	.	.	1
Escape	1	12	4	17
Fail To Return To Accident Resulting in Serious Injury	2	.	.	.	2
Fail To Stop After Accident - Operating Vehicle Intoxicated	.	.	1	1
Failure To Register As A Sex Offender	.	.	.	1	9	.	10
Failure To Return Lawful Detention/Escape	.	.	2	3	5
Forgery,Counterfeiting,Application Fraud	.	.	.	7	1	8

INDIANA DEPARTMENT OF CORRECTION
ADULT OFFENDERS
by Most Serious Offense

Miami Correctional Facility												
Most Serious Offense	Murder	FA	FB	FC	FD	F1	F2	F3	F4	F5	F6	Total
Fraud	1	1
Fraud On A Financial Institution	.	.	.	1	4	.	5
Handgun Violation	26	.	26
Identity Deception	1	1	2
Incest	.	.	1	1
Intimidation	.	.	.	1	5	.	6
Kidnapping	.	10	6	6	.	1	.	23
Murder	236	236
Neglect Of A Dependent	.	.	3	1	.	4
Neglect Of A Dependent Resulting In Serious Injury	8	.	.	.	8
Neglect Of Dependent Resulting In Death	.	5	.	.	.	9	14
Non Support Of Dependent Child	.	.	.	1	3	.	4
Obliterating Handgun I.D.	1	.	1
Operate Vehicle After Suspended For Life	.	.	.	1	17	.	18
Operating Vehicle Intoxicated Resulting In Death	.	.	4	1	5	1	.	11
Operating Vehicle Intoxicated-Prior Conviction	1	1
Operating Vehicle-Habit Traffic Violator	3	3
Opererating Vehicle While Intoxicated - Prior Conviction	3	3
Pharmacy Robbery	1	.	.	1
Possess Chemical Reagents Or Precursors	.	.	.	1	1
Possess Destructive Device Or Explosive	3	3
Possess Of Precursors	1	1
Possession Of A Controlled Substance	1	1
Possession Of Cocaine Or Narcotic Drug	.	8	6	1	.	.	.	9	4	3	3	34
Possession Of Dangerous Device	3	2	.	5
Possession Of Methamphetamine	.	1	6	11	12	9	4	43
Possession Of Syringes Or Needles	1	2	3
Possession Or Use Of Legend Drug	1	1
Prisoner Poss. Dangerous Device/Material	.	.	1	1
Rape	.	11	2	.	.	18	.	7	.	.	.	38
Reckless Homicide	3	.	3
Resisting Law Enforcement	.	.	2	.	1	.	.	3	.	1	5	12
Robbery	.	36	141	5	.	.	28	188	.	16	.	414
Sexual Misconduct With A Minor	.	.	3	6	2	.	11
Stalking	.	.	2	1	3

INDIANA DEPARTMENT OF CORRECTION
ADULT OFFENDERS
by Most Serious Offense

Miami Correctional Facility												
Most Serious Offense	Murder	FA	FB	FC	FD	F1	F2	F3	F4	F5	F6	Total
Theft,Receiving Stolen Property	1	5	6
Trafficking With An Inmate	3	.	3
Unlawful Firearm Poss By Serious Felon	.	.	42	60	.	.	102
Vicarious Sexual Gratification	1	.	.	1
Voluntary Manslaughter	.	38	4	.	.	.	30	72
Welfare Fraud	1	1
Total	236	492	660	64	6	161	407	466	270	290	50	3102

INDIANA DEPARTMENT OF CORRECTION
ADULT OFFENDERS
by Most Serious Offense

New Castle Correctional Facility												
Most Serious Offense	Murder	FA	FB	FC	FD	F1	F2	F3	F4	F5	F6	Total
Accident Fail To Stop Resulting in Serious Injury or Death	2	.	2
Aggravated Battery	.	.	4	.	.	1	.	7	.	.	.	12
Aiding Inducing/Causing An Offense	.	2	4	.	.	.	1	.	1	1	.	9
Arson	.	1	5	5	.	.	11
Assisting A Criminal	1	.	1
Attempt To Commit Felony	.	49	26	2	.	3	1	9	7	6	.	103
Auto Theft, Receiving Stolen Auto Parts	.	.	.	1	1	2	4
Battery	.	3	4	8	25	1	41
Burglary	.	18	41	8	.	.	8	2	34	20	.	131
Carjacking	.	.	1	1
Check Fraud	.	.	.	1	1
Child Exploitation	.	.	.	9	10	30	.	49
Child Molesting	.	605	285	99	.	22	3	106	246	.	.	1366
Child Seduction	.	.	.	2	5	.	7
Child Solicitation	.	.	1	3	1	.	.	.	15	26	.	46
Conspiracy	.	5	7	1	.	.	.	4	1	3	.	21
Corrupt Business Influence	.	.	.	1	2	.	3
Criminal Confinement	.	.	11	2	.	.	.	4	.	11	.	28
Criminal Deviate Conduct	.	49	52	101
Criminal Recklessness	.	.	.	1	2	.	3
Dangerous Control Of A Handgun	1	.	1
Dealing In Cocaine Or Narcotic Drug	.	27	16	.	.	.	4	2	14	6	.	69
Dealing In Methamphetamine	.	2	22	.	.	.	5	2	6	20	.	57
Dealing In Schedule I, II, or III Controlled Substance	.	5	10	1	.	.	.	16
Dealing Possessing Look-Alike Substance	.	.	.	1	1	.	2
Disarming A Law Enforcement Officer	1	.	1
Dissemination Of Matter Harmful To Minor	1	1
Domestic Battery	1	1	2
Escape	2	3	5
Fail To Return To Accident Resulting in Serious Injury	1	.	.	.	1
Failure To Register As A Sex Offender	.	.	.	2	18	1	21
Forgery,Counterfeiting,Application Fraud	.	.	.	8	1	9
Fraud On A Financial Institution	2	.	2

INDIANA DEPARTMENT OF CORRECTION
ADULT OFFENDERS
by Most Serious Offense

New Castle Correctional Facility												
Most Serious Offense	Murder	FA	FB	FC	FD	F1	F2	F3	F4	F5	F6	Total
Habitual Offender Substance Abuse	1	1
Handgun Violation	15	.	15
Home Improvement Fraud Offenses	.	.	.	1	1
Human Sexual Trafficking	1	1	.	.	2
Incest	.	.	16	5	2	4	.	27
Intimidation	.	.	.	2	1	3
Kidnapping	.	11	1	.	3	.	15
Manufacture Methamphetamine	1	.	.	1
Murder	77	77
Neglect Of A Dependent	.	.	.	1	1	.	2
Neglect Of A Dependent Resulting in Serious Injury	1	.	.	.	1
Non Support Of Dependent Child	.	.	.	1	1	1	1	4
Operate Vehicle After Suspended For Life	.	.	.	2	13	.	15
Operating Vehicle Intoxicated	0
Operating Vehicle Intoxicated Resulting in Death	.	.	1	1	2	.	4
Operating Vehicle Intoxicated-Prior Conviction	1	1
Opererating Vehicle While Intoxicated - Prior Conviction	2	2
Possession Of A Machine Gun Or Bomb	1	.	1
Possession Of Child Pornography	18	1	19
Possession Of Cocaine Or Narcotic Drug	.	.	3	6	4	13
Possession Of Methamphetamine	.	.	1	1	1	17	5	25
Possession Of Syringes Or Needles	4	4
Promoting Prostitution Under Age 18	.	.	2	2
Rape	.	75	91	.	.	2	.	83	.	.	.	251
Reckless Homicide	.	.	.	1	1
Residential Entry	1	1
Resisting Law Enforcement	1	.	.	.	1
Robbery	.	12	49	3	.	.	5	27	.	10	.	106
Sexual Battery	.	.	.	1	2	.	.	.	9	.	.	12
Sexual Misconduct With A Minor	.	1	142	27	1	.	.	.	107	59	.	337
Sexual Misconduct w/ Service Provider	1	.	1
Theft,Receiving Stolen Property	11	11
Unlawful Firearm Poss By Serious Felon	.	.	12	8	.	.	20

INDIANA DEPARTMENT OF CORRECTION
ADULT OFFENDERS
by Most Serious Offense

New Castle Correctional Facility												
Most Serious Offense	Murder	FA	FB	FC	FD	F1	F2	F3	F4	F5	F6	Total
Vicarious Sexual Gratification	.	.	1	1	3	1	.	6
Voluntary Manslaughter	.	6	1	.	.	.	1	8
Total	77	871	808	193	8	28	28	254	472	339	39	3117

INDIANA DEPARTMENT OF CORRECTION
ADULT OFFENDERS
by Most Serious Offense

Pendleton Correctional Facility												
Most Serious Offense	Murder	FA	FB	FC	FD	F1	F2	F3	F4	F5	F6	Total
Accident Fail To Stop Resulting in Serious Injury or Death	2	.	2
Aggravated Battery	.	.	13	19	.	.	.	32
Aiding Inducing/Causing An Offense	.	3	1	.	.	2	.	1	.	2	.	9
Arson	.	3	4	4	.	.	11
Attempt To Commit Felony	.	66	8	1	.	22	2	3	.	2	.	104
Auto Theft, Receiving Stolen Auto Parts	1	1	2
Battery	.	1	2	4	.	.	1	2	.	16	2	28
Burglary	.	31	65	9	.	6	10	3	27	15	.	166
Carjacking	.	.	3	3
Check Deception	1	.	1
Child Molesting	.	201	9	.	.	47	.	3	2	.	.	262
Conspiracy	.	7	1	.	.	1	2	1	.	.	.	12
Criminal Confinement	.	.	16	1	.	.	1	5	.	4	.	27
Criminal Deviate Conduct	.	31	31
Criminal Recklessness	.	.	.	1	1	2	4
Dealing In Cocaine Or Narcotic Drug	.	50	13	.	.	.	15	4	6	5	.	93
Dealing In Marijuana, Hash, or Hash Oil	1	.	1
Dealing In Methamphetamine	.	15	15	.	.	.	11	4	10	6	.	61
Dealing In Schedule I, II, or III Controlled Substance	.	3	10	1	.	.	14
Dealing In Schedule IV Controlled Substance	1	.	.	.	1
Disarming A Law Enforcement Officer	1	.	1
Domestic Battery	3	.	3
Escape	3	2	5
Failure To Appear	1	1
Failure To Register As A Sex Offender	5	.	5
Failure To Return Lawful Detention/Escape	.	.	.	1	1
Forgery,Counterfeiting,Application Fraud	.	.	.	2	1	3
Fraud	1	1
Fraud On A Financial Institution	.	.	.	1	2	.	3
Handgun Violation	.	.	.	1	10	.	11
Human Sexual Trafficking	1	1
Incest	1	.	.	1
Intimidation	9	.	9

INDIANA DEPARTMENT OF CORRECTION
ADULT OFFENDERS
by Most Serious Offense

Pendleton Correctional Facility												
Most Serious Offense	Murder	FA	FB	FC	FD	F1	F2	F3	F4	F5	F6	Total
Kidnapping	.	11	1	1	.	.	.	13
Maintaining Common Nuisance	2	2
Manufacture Methamphetamine	1	.	.	.	1
Mischief	1	1
Murder	533	533
Neglect Of A Dependent	.	.	2	2
Neglect Of A Dependent Resulting in Serious Injury	3	.	.	.	3
Neglect Of Dependent Resulting In Death	.	5	.	.	.	4	9
Non Support Of Dependent Child	.	.	.	1	1
Obliterating Handgun I.D.	1	.	1
Operate Vehicle After Suspended For Life	11	.	11
Operating Vehicle Intoxicated Resulting in Death	.	.	1	3	.	.	4
Operating Vehicle-Habit Traffic Violator	1	1
Opererating Vehicle While Intoxicated - Prior Conviction	1	1
Perjury	1	1
Possession Of Cocaine Or Narcotic Drug	.	.	2	1	1	4	2	10
Possession Of Dangerous Device	1	1	.	2
Possession Of Methamphetamine	.	.	4	1	.	.	.	3	2	5	7	22
Possession Of Syringes Or Needles	1	1	2
Prisoner Poss. Dangerous Device/Material	.	.	1	1
Rape	.	42	6	.	.	12	.	4	.	.	.	64
Resisting Law Enforcement	.	.	1	.	.	.	1	1	.	.	1	4
Robbery	.	27	68	1	.	.	16	38	.	5	.	155
Sexual Misconduct With A Minor	.	.	7	7
Stalking	2	1	.	3
Strangulation	1	1
Theft,Receiving Stolen Property	.	.	.	1	2	2	3	8
Trafficking With An Inmate	.	.	.	1	3	.	4
Unlawful Firearm Poss By Serious Felon	.	.	15	12	.	.	27
Voluntary Manslaughter	.	34	3	.	.	.	8	45
Total	533	530	270	26	2	94	69	98	72	123	31	1848

INDIANA DEPARTMENT OF CORRECTION
ADULT OFFENDERS
by Most Serious Offense

Plainfield Correctional Facility												
Most Serious Offense	Murder	FA	FB	FC	FD	F1	F2	F3	F4	F5	F6	Total
Accident Fail To Stop Resulting in Serious Injury or Death	3	.	3
Aggravated Battery	.	.	9	19	.	.	.	28
Aiding Inducing/Causing An Offense	.	3	6	3	.	4	.	16
Arson	.	1	1	4	.	.	6
Assisting A Criminal	2	1	3
Attempt To Commit Felony	.	26	6	9	3	2	1	47
Auto Theft, Receiving Stolen Auto Parts	3	6	9
Battery	.	1	5	9	.	.	.	4	1	48	2	70
Bribery	1	.	1
Burglary	.	7	70	11	.	.	7	3	68	53	.	219
Carjacking	.	.	3	3
Check Deception	1	1
Check Fraud	1	.	1
Child Exploitation	.	.	.	1	1
Child Molesting	.	6	5	3	.	.	14
Child Solicitation	1	.	1
Conspiracy	.	9	1	.	.	.	2	3	1	6	1	23
Corrupt Business Influence	.	.	.	3	1	.	4
Criminal Confinement	.	.	15	1	.	.	.	5	.	13	4	38
Criminal Deviate Conduct	.	2	2	4
Criminal Recklessness	.	.	.	1	4	1	6
Criminal Trespass	1	1
Dealing In Cocaine Or Narcotic Drug	.	40	41	.	.	.	19	16	17	14	.	147
Dealing In Marijuana, Hash, or Hash Oil	1	1
Dealing In Methamphetamine	.	5	35	.	.	.	14	12	26	23	.	115
Dealing In Schedule I, II, or III Controlled Substance	.	3	25	.	.	.	1	3	2	1	.	35
Dealing In Schedule IV Controlled Substance	.	.	1	1	.	.	.	2
Dealing Possessing Look-Alike Substance	1	2	3
Dealing Substance Represented To Be Controlled Substance	1	1
Domestic Battery	23	4	27
Domestic Battery with Serious Bodily Injury Under Age 14	1	.	.	.	1
Escape	11	9	20
Fail To Return To Accident Resulting in Serious Injury	1	.	.	.	1

INDIANA DEPARTMENT OF CORRECTION
ADULT OFFENDERS
by Most Serious Offense

Plainfield Correctional Facility												
Most Serious Offense	Murder	FA	FB	FC	FD	F1	F2	F3	F4	F5	F6	Total
Failure To Register As A Sex Offender	.	.	.	2	13	4	19
Failure To Return Lawful Detention/Escape	.	.	.	1	1
Forgery,Counterfeiting,Application Fraud	.	.	.	8	1	9
Fraud	2	2
Fraud On A Financial Institution	.	.	.	4	6	.	10
Handgun Violation	.	.	.	1	27	.	28
Intimidation	.	.	.	2	16	4	22
Kidnapping	.	2	2
Maintaining Common Nuisance	1	1
Murder	65	65
Neglect Of A Dependent	.	.	1	1
Neglect Of A Dependent Resulting in Serious Injury	3	.	.	.	3
Neglect Of Dependent Resulting In Death	.	1	1
Non Support Of Dependent Child	.	.	.	6	1	1	8
Obstruction Of Justice	1	.	1
Operate Vehicle After Suspended For Life	.	.	.	2	22	.	24
Operating Vehicle Intoxicated Resulting in Death	2	.	.	2
Operating Vehicle Intoxicated Resulting in Serious Bodily Injury	3	.	3
Operating Vehicle Intoxicated-Prior Conviction	1	1	2
Operating Vehicle With Schedule I,II in Body - Causing Death	1	.	.	1
Operating Vehicle-Habit Traffic Violator	1	1
Opererating Vehicle While Intoxicated - Prior Conviction	4	4
Possession Of A Controlled Substance	.	.	.	1	1
Possession Of Cocaine Or Narcotic Drug	.	2	4	1	2	.	.	5	6	16	6	42
Possession Of Dangerous Device	2	.	.	2
Possession Of Methamphetamine	.	1	5	1	.	.	.	14	15	19	14	69
Possession Of Syringes Or Needles	1	7	8
Possession Or Use Of Legend Drug	1	.	1
Prisoner Poss. Dangerous Device/Material	.	.	1	1
Promoting Prostitution	1	.	1
Rape	.	4	3	7
Reckless Homicide	2	.	2
Residential Entry	3	3

INDIANA DEPARTMENT OF CORRECTION
ADULT OFFENDERS
by Most Serious Offense

Plainfield Correctional Facility												
Most Serious Offense	Murder	FA	FB	FC	FD	F1	F2	F3	F4	F5	F6	Total
Resisting Law Enforcement	.	.	.	1	1	.	.	1	.	.	5	8
Robbery	.	7	52	7	.	.	2	61	.	20	.	149
Sexual Misconduct With A Minor	.	1	1	1	2	1	.	6
Stalking	.	.	1	7	1	9
Strangulation	1	1
Theft,Receiving Stolen Property	3	4	17	24
Trafficking With An Inmate	.	.	.	1	2	.	3
Unlawful Firearm Poss By Serious Felon	.	.	18	68	.	.	86
Voluntary Manslaughter	.	15	2	.	.	.	2	19
Total	65	136	313	65	8	0	47	164	221	378	107	1504

INDIANA DEPARTMENT OF CORRECTION
ADULT OFFENDERS
by Most Serious Offense

Putnamville Correctional Facility												
Most Serious Offense	Murder	FA	FB	FC	FD	F1	F2	F3	F4	F5	F6	Total
Accident Fail To Stop Resulting in Serious Injury or Death	1	.	1
Aggravated Battery	.	.	8	30	.	.	.	38
Aiding Inducing/Causing An Offense	.	1	4	1	.	.	2	1	1	3	.	13
Arson	.	.	3	1	12	.	.	16
Assisting A Criminal	2	.	2
Attempt To Commit Felony	.	15	5	1	.	.	.	8	.	8	1	38
Auto Theft, Receiving Stolen Auto Parts	2	10	12
Battery	.	.	2	4	.	.	.	4	.	77	6	93
Battery To A Child Causing Death	.	1	1
Bribery	1	.	1
Burglary	.	15	94	18	.	.	6	5	127	87	.	352
Carjacking	.	.	4	4
Carrying Handgun Without License	.	.	.	1	1
Child Exploitation	1	.	1
Child Molesting	.	2	9	1	.	.	.	1	.	.	.	13
Conspiracy	.	6	10	.	.	.	6	4	5	6	.	37
Controlled Substance Registration	.	.	.	1	2	3
Conversion	1	.	1
Corrupt Business Influence	4	.	4
Criminal Confinement	.	.	10	2	.	.	.	11	.	14	1	38
Criminal Deviate Conduct	.	1	1
Criminal Recklessness	.	.	.	3	1	4	3	11
Dealing In Cocaine Or Narcotic Drug	.	26	60	.	.	.	36	25	33	28	.	208
Dealing In Marijuana, Hash, or Hash Oil	.	.	.	1	2	.	3
Dealing In Methamphetamine	.	7	36	.	.	.	27	42	50	41	.	203
Dealing In Schedule I, II, or III Controlled Substance	.	4	31	.	.	.	1	.	3	2	.	41
Dealing In Schedule IV Controlled Substance	.	.	.	1	.	.	.	1	1	.	.	3
Dealing Possessing Look-Alike Substance	3	2	5
Disarming A Law Enforcement Officer	1	.	1
Domestic Battery	32	7	39
Escape	1	18	24	43
Fail To Return To Accident Resulting in Serious Injury	3	.	.	.	3
Fail To Stop After Accident - Operating Vehicle Intoxicated	.	.	2	2
Failure To Register As A Sex Offender	34	2	36
Firearm Within 1 Mile School Property Without License	.	.	.	1	1

INDIANA DEPARTMENT OF CORRECTION
ADULT OFFENDERS
by Most Serious Offense

Putnamville Correctional Facility												
Most Serious Offense	Murder	FA	FB	FC	FD	F1	F2	F3	F4	F5	F6	Total
Forgery,Counterfeiting,Application Fraud	.	.	.	12	5	17
Fraud	3	3
Fraud On A Financial Institution	12	.	12
Handgun Violation	35	.	35
Human Sexual Trafficking	.	.	1	1
Identity Deception	1	1
Intimidation	.	.	.	1	21	3	25
Invasion Of Privacy	1	1
Involuntary Manslaughter	1	.	1
Kidnapping	.	4	3	.	3	1	11
Maintaining Common Nuisance	4	4
Manufacture Methamphetamine	1	.	.	1
Murder	53	53
Neglect Of A Dependent	.	.	1	1	5	1	8
Neglect Of A Dependent Resulting in Serious Injury	5	.	.	.	5
Neglect Of Dependent Resulting In Death	.	2	2
Non Support Of Dependent Child	.	.	.	8	1	2	11
Obliterating Handgun I.D.	1	.	1
Obstruction Of Justice	2	1	3
Operate Vehicle After Suspended For Life	.	.	.	3	51	.	54
Operating Vehicle Intoxicated	1	.	1
Operating Vehicle Intoxicated Resulting in Death	.	.	5	7	6	.	18
Operating Vehicle Intoxicated Resulting in Serious Bodily Injury	.	.	.	1	1	3	.	5
Operating Vehicle Intoxicated-Prior Conviction	4	4
Operating Vehicle While Intoxicated - Endangering Person	1	1
Operating Vehicle-Habit Traffic Violator	1	1
Opererating Vehicle While Intoxicated - Prior Conviction	11	11
Possess Chemical Reagents Or Precursors	.	.	.	3	3
Possess Destructive Device Or Explosive	1	.	1
Possession Of A Controlled Substance	.	.	.	1	1	2
Possession Of Cocaine Or Narcotic Drug	.	.	3	1	.	.	.	3	9	17	7	40
Possession Of Marijuana, Hash, Hash Oil	1	1
Possession Of Methamphetamine	.	1	9	15	13	41	31	110
Possession Of Syringes Or Needles	1	6	7
Possession Or Use Of Legend Drug	3	3

INDIANA DEPARTMENT OF CORRECTION
ADULT OFFENDERS
by Most Serious Offense

Putnamville Correctional Facility												
Most Serious Offense	Murder	FA	FB	FC	FD	F1	F2	F3	F4	F5	F6	Total
Promoting Prostitution	.	.	.	1	2	.	3
Rape	.	2	1	3
Reckless Homicide	.	.	.	2	3	.	5
Residential Entry	3	3
Resisting Law Enforcement	1	.	.	1	.	2	7	11
Robbery	.	10	74	5	.	.	3	73	.	21	.	186
Sale Of Unregistered Security	.	.	.	1	1
Sex Predator Unlawful Job Near Children	1	.	1
Sexual Battery	2	2
Sexual Misconduct With A Minor	4	1	.	5
Stalking	1	.	.	.	2	8	.	11
Strangulation	1	2	3
Synthetic Identity Deception	1	1
Terroristic Mischief	1	.	1
Theft,Receiving Stolen Property	1	5	20	26
Trafficking With An Inmate	.	.	.	3	7	.	10
Unlawful Firearm Poss By Serious Felon	.	.	33	95	.	.	128
Voluntary Manslaughter	.	16	7	.	.	.	4	27
Total	53	113	412	78	9	0	85	236	364	626	177	2153

INDIANA DEPARTMENT OF CORRECTION
ADULT OFFENDERS
by Most Serious Offense

Reception Diagnostic Center												
Most Serious Offense	Murder	FA	FB	FC	FD	F1	F2	F3	F4	F5	F6	Total
Accident Fail To Stop Resulting in Serious Injury or Death	2	.	2
Aggravated Battery	.	.	3	10	.	.	.	13
Aiding Inducing/Causing An Offense	2	1	.	.	3
Arson	.	.	1	3	.	.	4
Attempt To Commit Felony	2	.	1	.	1	.	4
Auto Theft, Receiving Stolen Auto Parts	1	5	6
Battery	1	.	29	4	34
Battery By Bodily Waste	1	1
Burglary	.	.	20	5	.	.	4	.	29	33	.	91
Carjacking	.	.	2	2
Child Exploitation	1	.	.	.	1	.	.	2
Child Molesting	.	4	3	3	.	5	1	4	13	.	.	33
Child Seduction	1	.	1
Conspiracy	.	.	2	.	.	.	1	.	.	5	.	8
Conversion	1	.	1
Corrupt Business Influence	1	.	1
Criminal Confinement	.	.	1	.	1	.	2	3	.	6	1	14
Criminal Deviate Conduct	.	.	3	3
Criminal Recklessness	1	2	.	3
Dealing In Cocaine Or Narcotic Drug	.	6	9	.	.	.	6	7	6	8	.	42
Dealing In Marijuana, Hash, or Hash Oil	3	.	3
Dealing In Methamphetamine	.	.	7	.	.	.	18	10	18	10	.	63
Dealing In Schedule I, II, or III Controlled Substance	.	.	3	1	1	.	5
Dealing In Schedule IV Controlled Substance	.	.	.	1	1	.	2
Dealing Possessing Look-Alike Substance	1	3	4
Disarming A Law Enforcement Officer	1	.	.	.	1
Dissemination Of Matter Harmful To Minor	1	1
Domestic Battery	13	5	18
Escape	6	9	15
Failure To Register As A Sex Offender	.	.	.	1	6	1	8
Forgery,Counterfeiting,Application Fraud	.	.	.	1	1
Fraud	1	1
Fraud On A Financial Institution	2	.	2
Habitual Vehicular Subst Offender	0
Handgun Violation	23	.	23
Incest	.	.	1	1
Intimidation	4	3	7
Maintaining Common Nuisance	3	3

INDIANA DEPARTMENT OF CORRECTION
ADULT OFFENDERS
by Most Serious Offense

Reception Diagnostic Center												
Most Serious Offense	Murder	FA	FB	FC	FD	F1	F2	F3	F4	F5	F6	Total
Murder	6	6
Neglect Of A Dependent	2	.	2
Non Support Of Dependent Child	.	.	.	3	2	3	1	9
Obliterating Handgun I.D.	1	.	1
Obstruction Of Justice	1	.	1
Operate Vehicle After Suspended For Life	23	.	23
Operating Vehicle Intoxicated Resulting in Death	1	2	.	3
Operating Vehicle-Habit Traffic Violator	1	1
Opererating Vehicle While Intoxicated - Prior Conviction	3	3
Possession Of Cocaine Or Narcotic Drug	1	.	.	1	1	6	4	13
Possession Of Marijuana, Hash, Hash Oil	1	1
Possession Of Methamphetamine	.	.	.	1	.	.	.	4	10	17	10	42
Possession Of Syringes Or Needles	2	2
Rape	.	2	4	6	.	.	.	12
Reckless Homicide	4	.	4
Residential Entry	4	4
Resisting Law Enforcement	5	5
Robbery	.	.	11	5	.	.	1	15	.	15	.	47
Sexual Misconduct With A Minor	.	.	4	3	3	.	10
Stalking	2	1	3
Strangulation	1	3	4
Theft,Receiving Stolen Property	2	5	7	14
Trafficking With An Inmate	.	.	.	1	1	.	2
Unlawful Firearm Poss By Serious Felon	.	.	6	19	.	.	25
Viol/Failure Of Carriers Duty To Warn	1	1
Voluntary Manslaughter	4	4
Total	6	12	80	21	12	7	37	65	106	245	77	668

INDIANA DEPARTMENT OF CORRECTION
ADULT OFFENDERS
by Most Serious Offense

Rockville Correctional Facility												
Most Serious Offense	Murder	FA	FB	FC	FD	F1	F2	F3	F4	F5	F6	Total
Aggravated Battery	.	.	3	.	.	1	.	12	.	.	.	16
Aiding Inducing/Causing An Offense	.	4	5	1	.	2	6	3	5	4	.	30
Arson	.	1	1	1	4	.	.	7
Assisting A Criminal	1	1	2
Attempt To Commit Felony	.	10	1	.	.	3	7	3	1	8	.	33
Auto Theft, Receiving Stolen Auto Parts	4	4
Battery	.	1	.	.	1	.	2	5	.	41	2	52
Bribery	1	.	1
Burglary	.	3	16	3	.	1	4	3	42	21	.	93
Carjacking	.	.	2	2
Check Fraud	2	2
Child Exploitation	1	.	1
Child Molesting	.	25	5	1	.	7	.	5	3	.	.	46
Child Solicitation	4	.	4
Conspiracy	.	8	5	.	.	1	8	7	2	10	.	41
Controlled Substance Registration	1	.	1
Corrupt Business Influence	.	.	.	1	2	.	3
Criminal Confinement	1	4	.	.	.	5
Criminal Deviate Conduct	.	3	1	4
Criminal Recklessness	1	.	1
Dealing In Cocaine Or Narcotic Drug	.	12	16	.	.	.	12	13	13	15	.	81
Dealing In Marijuana, Hash, or Hash Oil	1	1
Dealing In Methamphetamine	.	13	16	.	.	.	52	34	37	28	.	180
Dealing In Schedule I, II, or III Controlled Substance	.	6	18	.	.	.	1	4	3	3	.	35
Dealing In Schedule IV Controlled Substance	.	.	2	1	3
Dealing Possessing Look-Alike Substance	1	3	.	4
Domestic Battery	3	1	4
Escape	9	14	23
Fail To Return To Accident Resulting in Serious Injury	1	.	.	.	1
Failure To Appear	1	1
Failure To Register As A Sex Offender	4	.	4
Failure To Return Lawful Detention/Escape	.	.	.	1	1
Firearm Within 1 Mile School Property Without License	.	.	.	1	1
Forgery,Counterfeiting,Application Fraud	.	.	.	8	6	14

INDIANA DEPARTMENT OF CORRECTION
ADULT OFFENDERS
by Most Serious Offense

Rockville Correctional Facility												
Most Serious Offense	Murder	FA	FB	FC	FD	F1	F2	F3	F4	F5	F6	Total
Fraud	4	4
Fraud On A Financial Institution	8	.	8
Habitual Offender	1	1
Handgun Violation	8	.	8
Human Sexual Trafficking	.	.	2	1	.	.	.	3
Identity Deception	2	2
Incest	.	.	1	1	1	.	3
Inmate Fraud	1	.	1
Intimidation	2	.	2
Kidnapping	1	.	.	.	1
Maintaining Common Nuisance	1	5	6
Make False Sales Doc	1	1
Murder	51	51
Neglect Of A Dependent	.	.	4	2	5	1	12
Neglect Of A Dependent Resulting in Serious Injury	20	.	.	.	20
Neglect Of Dependent Resulting In Death	.	10	.	.	.	8	18
Operate Vehicle After Suspended For Life	6	.	6
Operating Vehicle Intoxicated Resulting in Death	.	.	1	2	.	.	3
Operating Vehicle Intoxicated Resulting in Serious Bodily Injury	1	.	1
Operating Vehicle Intoxicated-Prior Conviction	2	2
Operating Vehicle-Habit Traffic Violator	1	1	2
Opererating Vehicle While Intoxicated - Prior Conviction	7	7
Pharmacy Robbery	1	.	.	1
Possession Of A Controlled Substance	.	.	.	1	1
Possession Of Cocaine Or Narcotic Drug	.	.	1	2	1	7	8	19
Possession Of Methamphetamine	.	.	3	2	1	.	.	15	15	28	37	101
Possession Of Syringes Or Needles	3	13	16
Promoting Prostitution	.	.	.	1	1
Promoting Prostitution Under Age 18	.	.	1	1	.	.	
Rape	2	.	.	.	2
Reckless Homicide	2	.	2
Residential Entry	4	4
Resisting Law Enforcement	1	.	.	.	1
Robbery	.	3	8	2	.	.	8	34	.	11	.	66
Sexual Misconduct With A Minor	.	.	3	13	3	.	19

INDIANA DEPARTMENT OF CORRECTION
ADULT OFFENDERS
by Most Serious Offense

Rockville Correctional Facility												
Most Serious Offense	Murder	FA	FB	FC	FD	F1	F2	F3	F4	F5	F6	Total
Strangulation	1	1
Theft,Receiving Stolen Property	1	3	22	26
Trafficking With An Inmate	15	.	15
Unlawful Firearm Poss By Serious Felon	.	.	2	5	.	.	7
Voluntary Manslaughter	.	8	1	.	.	.	12	21
Welfare Fraud	.	.	.	2	2
Total	51	107	117	27	6	23	114	171	149	264	141	1170

INDIANA DEPARTMENT OF CORRECTION
ADULT OFFENDERS
by Most Serious Offense

South Bend Community Re-Entry Center												
Most Serious Offense	Murder	FA	FB	FC	FD	F1	F2	F3	F4	F5	F6	Total
Aggravated Battery	.	.	3	4	.	.	.	7
Aiding Inducing/Causing An Offense	.	.	3	2	1	.	6
Attempt To Commit Felony	.	5	2	1	.	.	.	8
Auto Theft, Receiving Stolen Auto Parts	2	2
Battery	.	.	1	1	.	1	.	3
Battery To A Child Causing Death	.	1	1
Burglary	.	1	6	2	11	3	.	23
Conspiracy	.	4	1	1	.	6
Corrupt Business Influence	1	.	1
Criminal Recklessness	1	.	1
Dealing In Cocaine Or Narcotic Drug	.	11	8	2	3	6	.	30
Dealing In Marijuana, Hash, or Hash Oil	1	.	1
Dealing In Methamphetamine	.	2	5	3	4	.	14
Dealing In Schedule I, II, or III Controlled Substance	.	1	1
Dealing Possessing Look-Alike Substance	1	.	1
Domestic Battery	1	.	1
Fail To Return To Accident Resulting in Serious Injury	1	.	.	.	1
Forgery,Counterfeiting,Application Fraud	.	.	.	1	1
Handgun Violation	4	.	4
Intimidation	1	.	1
Maintaining Common Nuisance	1	1
Murder	13	13
Non Support Of Dependent Child	.	.	.	2	1	3
Operate Vehicle After Suspended For Life	6	.	6
Operating Vehicle Intoxicated Resulting in Serious Bodily Injury	1	1
Opererating Vehicle While Intoxicated - Prior Conviction	1	1
Possession Of A Controlled Substance	1	1
Possession Of Cocaine Or Narcotic Drug	.	2	2	.	1	5
Possession Of Methamphetamine	1	1	2
Reckless Homicide	1	.	1
Resisting Law Enforcement	1	1
Robbery	.	1	6	1	.	.	.	3	.	3	.	14
Sale Of Unregistered Security	.	.	.	1	1
Synthetic Identity Deception	2	2
Theft,Receiving Stolen Property	4	4
Unlawful Firearm Poss By Serious Felon	.	.	3	2	.	.	5
Voluntary Manslaughter	.	4	1	5
Welfare Fraud	.	.	.	1	1
Total	13	32	39	8	2	0	0	12	23	37	14	180

INDIANA DEPARTMENT OF CORRECTION
ADULT OFFENDERS
by Most Serious Offense

Wabash Valley Correctional Facility													
Most Serious Offense	Murder	FA	FB	FC	FD	F1	F2	F3	F4	F5	F6	HO*	Total
Accident Fail To Stop Resulting in Serious Injury or Death	1	.	.	1
Aggravated Battery	.	.	16	.	.	4	.	17	37
Aiding Inducing/Causing An Offense	.	11	1	.	.	2	.	2	2	1	.	.	19
Arson	.	.	8	3	.	.	.	11
Attempt To Commit Felony	.	84	7	.	.	14	2	5	2	4	.	.	118
Auto Theft, Receiving Stolen Auto Parts	1	2	.	3
Battery	.	5	2	3	.	.	2	.	.	23	2	.	37
Battery By Bodily Waste	1	1
Burglary	.	40	60	8	.	7	11	4	51	19	.	.	200
Carjacking	.	.	3	3
Child Exploitation	1	.	.	.	1
Child Molesting	.	238	16	.	.	62	.	1	1	.	.	.	318
Child Solicitation	.	.	.	1	1	.	.	2
Conspiracy	.	7	4	1	.	2	4	3	2	.	.	.	23
Contributing To The Delinquency Of Minor	1	.	1
Criminal Confinement	.	.	9	3	.	1	.	.	13
Criminal Deviate Conduct	.	20	7	27
Criminal Recklessness	2	.	.	2
Dealing In Cocaine Or Narcotic Drug	.	46	25	.	.	.	8	4	10	8	.	.	101
Dealing In Marijuana, Hash, or Hash Oil	2	1	.	3
Dealing In Methamphetamine	.	13	21	.	.	.	21	9	21	19	.	.	104
Dealing In Schedule I, II, or III Controlled Substance	.	5	9	.	.	.	2	1	1	1	.	.	19
Dealing Possessing Look-Alike Substance	1	.	.	1
Domestic Battery	3	1	.	4
Driving Whl/Suspended Resulting In Death	1	.	.	1
Escape	1	1	.	.	2
Failure To Register As A Sex Offender	3	.	.	3
Failure To Return Lawful Detention/Escape	.	.	1	1	2
Firearm Within 1 Mile School Property Without License	.	.	.	1	1
Forgery,Counterfeiting,Application Fraud	.	.	.	3	3
Fraud On A Financial Institution	2	.	.	2
Habitual Substance Offender	1	1
Handgun Violation	14	.	.	14
Incest	1	.	.	.	1
Intimidation	6	1	.	7
Kidnapping	.	20	1	21

INDIANA DEPARTMENT OF CORRECTION
ADULT OFFENDERS
by Most Serious Offense

Wabash Valley Correctional Facility													
Most Serious Offense	Murder	FA	FB	FC	FD	F1	F2	F3	F4	F5	F6	HO*	Total
Maintaining Common Nuisance	1	.	1
Manufacture Methamphetamine	1	.	.	.	1
Murder	570	570
Neglect Of A Dependent Resulting in Serious Injury	4	4
Neglect Of Dependent Resulting In Death	.	9	9
Non Support Of Dependent Child	.	.	.	1	1
Obstruction Of Justice	1	.	.	1
Operate Vehicle After Suspended For Life	6	.	.	6
Operating Vehicle Intoxicated	1	.	.	1
Operating Vehicle Intoxicated Resulting in Death	.	.	4	4	2	.	.	10
Operating Vehicle Intoxicated Resulting in Serious Bodily Injury	1	.	1
Operating Vehicle While Intoxicated - Endangering Person	1	1
Opererating Vehicle While Intoxicated - Prior Conviction	4	.	4
Possess Destructive Device Or Explosive	1	1
Possession Of Cocaine Or Narcotic Drug	.	3	1	1	1	5	4	.	15
Possession Of Dangerous Device	1	2	.	.	3
Possession Of Methamphetamine	.	.	2	2	3	10	6	.	23
Prisoner Poss. Dangerous Device/Material	.	.	1	1
Rape	.	48	9	.	.	12	.	6	75
Reckless Homicide	.	.	.	1	1	.	.	2
Removing, Damaging, Or Altering a VIN	.	.	.	1	1
Resisting Law Enforcement	.	.	1	2	.	3
Robbery	.	44	64	2	.	.	5	43	.	12	.	.	170
Sexual Misconduct With A Minor	.	.	9	2	.	.	.	11
Theft,Receiving Stolen Property	1	1	7	.	9
Trafficking With An Inmate	1	.	.	1
Unlawful Firearm Poss By Serious Felon	.	.	16	17	.	.	.	33
Voluntary Manslaughter	.	37	2	.	.	.	10	49
Welfare Fraud	1	1
Total	570	630	298	23	4	103	67	105	125	156	33	1	2115

INDIANA DEPARTMENT OF CORRECTION
ADULT OFFENDERS
by Most Serious Offense

Westville Correctional Facility													
Most Serious Offense	Murder	FA	FB	FC	FD	F1	F2	F3	F4	F5	F6	HO*	Total
Accident Fail To Stop Resulting in Serious Injury or Death	3	.	.	3
Aggravated Battery	.	.	14	36	50
Aiding Inducing/Causing An Offense	.	3	8	1	.	.	.	10	5	13	2	.	42
Arson	.	2	8	11	.	.	.	21
Assisting A Criminal	.	.	.	3	2	.	.	5
Attempt To Commit Felony	.	41	9	2	.	1	4	15	3	16	2	.	93
Auto Theft, Receiving Stolen Auto Parts	.	.	.	1	1	5	3	.	10
Battery	.	2	7	6	.	.	.	11	.	101	12	.	139
Battery To A Child Causing Death	.	1	1
Bribery	1	.	.	1
Burglary	.	12	119	25	.	.	9	4	168	113	.	.	450
Carjacking	.	.	2	2
Carrying Handgun Without License	.	.	.	3	3
Check Fraud	1	.	1
Child Molesting	.	7	7	3	.	.	.	1	2	.	.	.	20
Child Possession of Firearm	1	.	.	1
Child Solicitation	1	.	.	1
Conspiracy	.	6	2	1	.	.	.	5	4	5	.	.	23
Corrupt Business Influence	.	.	.	2	9	.	.	11
Criminal Confinement	.	.	9	2	.	.	.	10	.	19	1	.	41
Criminal Deviate Conduct	.	3	2	5
Criminal Recklessness	.	.	.	2	8	1	.	11
Deal Sub Represented To Be Controlled Sub	1	.	1
Dealing In Cocaine Or Narcotic Drug	.	93	86	.	.	.	16	41	43	37	.	.	316
Dealing In Marijuana, Hash, or Hash Oil	3	1	.	4
Dealing In Methamphetamine	.	21	74	.	.	.	29	43	81	58	.	.	306
Dealing In Schedule I, II, or III Controlled Substance	.	8	21	.	.	.	2	3	2	1	.	.	37
Dealing In Schedule IV Controlled Substance	.	.	1	1	.	.	.	3	1	.	.	.	6
Dealing Possessing Look-Alike Substance	.	.	.	1	5	6	.	12
Disarming A Law Enforcement Officer	7	.	.	7
Domestic Battery	52	12	.	64
Domestic Battery with Serious Bodily Injury Under Age 14	1	1
Escape	18	16	.	34
Fail To Return To Accident Resulting in Serious Injury	4	4
Fail To Stop After Accident - Operating Vehicle Intoxicated	.	.	2	2

INDIANA DEPARTMENT OF CORRECTION
ADULT OFFENDERS
by Most Serious Offense

Westville Correctional Facility													
Most Serious Offense	Murder	FA	FB	FC	FD	F1	F2	F3	F4	F5	F6	HO*	Total
Failure Of Sex Offender To Possess Id	1	1
Failure To Register As A Sex Offender	.	.	.	2	49	.	.	51
Failure To Return Lawful Detention/Escape	.	.	2	1	3
Firearm Within 1 Mile School Property Without License	.	.	.	4	4
Forgery,Counterfeiting,Application Fraud	.	.	.	17	3	.	20
Fraud	4	.	4
Fraud On A Financial Institution	.	.	.	3	13	.	.	16
Habitual Substance Offender	2	0
Handgun Violation	58	.	.	58
Home Improvement Fraud Offenses	1	.	.	1
Intimidation	.	.	.	1	29	6	.	36
Invasion Of Privacy	3	.	3
Involuntary Manslaughter	1	.	.	1
Kidnapping	.	2	2	.	1	.	.	5
Manufacture Methamphetamine	1	5	.	.	.	6
Murder	86	86
Neglect Of A Dependent	.	.	3	1	5	2	.	11
Neglect Of A Dependent Resulting in Serious Injury	5	5
Neglect Of Dependent Resulting In Death	.	4	4
Non Support Of Dependent Child	.	.	.	12	1	2	3	.	18
Obliterating Handgun I.D.	2	.	.	2
Obstruction Of Justice	1	2	1	.	4
Operate Vehicle After Suspended For Life	.	.	.	7	72	.	.	79
Operating Vehicle Intoxicated Resulting in Death	.	.	3	15	2	.	.	20
Operating Vehicle Intoxicated Resulting in Serious Bodily Injury	2	1	.	3
Operating Vehicle Intoxicated-Prior Conviction	1	7	.	8
Operating Vehicle-Habit Traffic Violator	.	.	.	1	1	10	.	12
Opererating Vehicle While Intoxicated - Prior Conviction	11	.	11
Possess Chemical Reagents Or Precursors	.	.	.	1	1
Possession Of A Controlled Substance	4	1	.	5
Possession Of Cocaine Or Narcotic Drug	.	8	6	5	2	.	.	9	10	16	18	.	74
Possession Of Dangerous Device	1	.	.	.	1
Possession Of Methamphetamine	.	.	4	1	.	.	.	15	21	66	27	.	134
Possession Of Syringes Or Needles	12	.	12
Possession Or Use Of Legend Drug	2	.	2

INDIANA DEPARTMENT OF CORRECTION
ADULT OFFENDERS
by Most Serious Offense

Westville Correctional Facility													
Most Serious Offense	Murder	FA	FB	FC	FD	F1	F2	F3	F4	F5	F6	HO*	Total
Prisoner Poss. Dangerous Device/Material	.	.	4	4
Promoting Prostitution	2	.	.	2
Rape	.	5	5
Reckless Homicide	.	.	.	1	3	.	.	4
Residential Entry	5	.	5
Resisting Law Enforcement	1	.	3	17	.	21
Robbery	.	26	99	13	.	.	3	106	.	65	.	.	312
Sexual Battery	1	.	.	.	1
Sexual Misconduct With A Minor	.	.	2	1	3	1	.	.	7
Stalking	.	.	1	1	2	7	.	.	11
Strangulation	1	.	1
Theft,Receiving Stolen Property	.	.	.	1	5	2	29	.	37
Trafficking With An Inmate	.	.	.	1	2	.	.	3
Unlawful Firearm Poss By Serious Felon	.	.	16	69	.	.	.	85
Voluntary Manslaughter	.	35	7	.	.	.	1	43