

Indiana Department of Correction
November 2016

Offender Population Report

Prepared for the Justice Reinvestment Advisory Council
and State Budget Committee

Bruce Lemmon, Commissioner



TABLE OF CONTENTS

DOC Monthly Admissions - Adult Offenders	1
Current Adult Offenders, by County of Commit	4
Population Trend Graphs	6
DOC Adult Offenders – Facility Breakdowns, by highest Felony Classification	8
DOC Adult Offenders – Most Serious Offense, Alphabetical by highest Felony Classification	10
DOC Adult Offenders – Most Serious Offense, Ranked by highest Felony Classification	14
Appendix – DOC Facilities – Felony Breakdowns	18



INDIANA DEPARTMENT OF CORRECTION

for November 2016

October 2016 Admissions

by Most Serious Offense

Most Serious Offense	Murder	FA	FB	FC	FD	F1	F2	F3	F4	F5	F6	Total
Accident Fail To Stop Resulting in Serious Injury or Death	1	.	1
Aggravated Battery	.	.	6	.	.	2	.	7	.	.	.	15
Aiding Inducing/Causing An Offense	.	.	2	4	3	.	9
Arson	.	.	1	3	.	.	4
Attempt To Commit Felony	.	2	2	1	.	1	.	2	.	2	.	10
Auto Theft, Receiving Stolen Auto Parts	.	.	.	1	2	4	7
Battery	.	.	.	6	2	.	1	.	.	29	2	40
Burglary	.	.	49	20	.	.	1	.	38	22	.	130
Carrying Handgun Without License	.	.	.	1	1
Child Exploitation	1	.	1
Child Molesting	.	7	7	9	.	3	.	2	6	.	.	34
Child Solicitation	.	.	.	1	2	.	3
Conspiracy	.	1	3	1	.	1	.	.	1	5	.	12
Corrupt Business Influence	.	.	.	5	1	.	6
Criminal Confinement	.	.	5	1	1	4	.	11
Criminal Deviate Conduct	.	1	2	3
Criminal Recklessness	.	.	.	2	2	2	.	6
Criminal Trespass	1	1
Dangerous Possession Of A Handgun	.	.	.	1	1
Dealing In Cocaine Or Narcotic Drug	.	5	38	.	.	.	5	6	6	19	.	79
Dealing In Marijuana, Hash, or Hash Oil	.	.	.	4	1	1	.	6
Dealing In Methamphetamine	.	3	12	.	.	.	13	5	17	20	.	70
Dealing In Schedule IV Controlled Substance	.	.	1	3	4
Dealing In a Schedule I, II, or III Controlled Substance	.	1	20	.	.	.	1	1	1	.	.	24
Dealing Possessing Look-Alike Substance	.	.	.	1	2	1	4
Domestic Battery	3	3	6
Domestic Battery With Previous Battery Conviction	1	.	1
Escape	3	1	4
Failure To Register As A Sex Offender	.	.	.	2	5	10	.	17
Failure To Return Lawful Detention/Escape	.	.	.	3	4	7
Firearm Within 1 Mile School Property Without License	.	.	.	6	6
Forgery,Counterfeiting,Application Fraud	.	.	.	17	17
Fraud On A Financial Institution	1	.	1
Handgun Violation (Felony Within 15 Yrs)	.	.	.	1	18	.	19

Note: 9 current admissions have missing sentencing data due to processing or safekeepers. 1

INDIANA DEPARTMENT OF CORRECTION

for November 2016

October 2016 Admissions

by Most Serious Offense

Most Serious Offense	Murder	FA	FB	FC	FD	F1	F2	F3	F4	F5	F6	Total
Identity Deception	.	.	.	1	1	2
Incest	.	.	.	1	1	.	2
Intimidation	.	.	.	2	3	2	2	9
Maintaining Common Nuisance	2	2
Murder	10	10
Neglect Of A Dependent	.	.	2	4	1	.	7
Neglect Of A Dependent Resulting in Serious Injury	3	.	.	.	3
Neglect Of Dependent Resulting In Death	1	1
Non Support Of Dependent Child	.	.	.	7	3	10
Obliterating Handgun I.D.	.	.	.	1	1	.	2
Operate Vehicle After Suspended For Life	.	.	.	4	20	.	24
Operating Vehicle - Schedule I Or II Control Substance	1	1
Operating Vehicle Intoxicated Resulting in Death	.	.	2	2	.	.	4
Operating Vehicle Intoxicated Resulting in Serious Bodily Injury	1	1
Operating Vehicle While Intoxicated - Endangering Person	3	3
Operating Vehicle While Intoxicated-Previous Conviction	5	8	13
Operating Vehicle-Habit Traffic Violator	2	2	4
Possess Chemical Reagents Or Precursors	.	.	.	1	1
Possess Of Precursors	3	3
Possession Of A Controlled Substance	5	5
Possession Of Cocaine Or Narcotic Drug	.	.	5	3	9	4	2	23
Possession Of Marijuana, Hash, Hash Oil	2	2
Possession Of Methamphetamine	.	.	1	1	3	.	.	2	1	7	7	22
Possession Of Paraphernalia	1	1
Possession Of Syringes Or Needles	1	4	3	8
Rape	.	2	1	1	.	.	.	4
Reckless Homicide	.	.	.	2	1	.	3
Residential Entry	1	3	4
Resisting Law Enforcement	8	3	11
Robbery	.	.	27	9	.	.	3	20	.	11	.	70
Security Fraud	.	.	1	1	2
Sexual Battery	1	.	.	.	1	.	.	2
Sexual Misconduct With A Minor	.	.	7	6	3	3	.	19
Stalking	3	.	3

Note: 9 current admissions have missing sentencing data due to processing or safekeepers. 2

INDIANA DEPARTMENT OF CORRECTION

for November 2016

October 2016 Admissions

by Most Serious Offense

Most Serious Offense	Murder	FA	FB	FC	FD	F1	F2	F3	F4	F5	F6	Total
Strangulation	1	1
Theft,Receiving Stolen Property	32	1	15	48
Trafficking With An Inmate	.	.	.	2	2	.	4
Unlawful Firearm Poss By Serious Felon	.	.	12	8	.	.	20
Vicarious Sexual Gratification	.	.	.	1	1
Voluntary Manslaughter	.	2	1	3
Voyeurism	1	1
Total	10	24	206	132	106	8	25	49	91	208	60	919

INDIANA DEPARTMENT OF CORRECTION
ADULT OFFENDERS
by County of Commitment
for November 2016
snapshot date: 11/01/2016

County of Commit	Department of Correction	**Community Corrections Programs	Local Jail Holds		COUNTY TOTALS
			DOC Contract	Statutorily Mandated	
Adams	147	130	0	0	277
Allen	1,457	725	18	87	2,287
Bartholomew	266	320	1	33	620
Benton*	18	0	1	5	24
Blackford	62	116	17	12	207
Boone	128	68	1	9	206
Brown	39	20	0	0	59
Carroll	48	67	2	0	117
Cass	178	123	3	1	305
Clark	232	90	7	7	336
Clay	51	124	6	2	183
Clinton	140	55	19	1	215
Crawford	32	44	0	1	77
Daviess	87	226	3	2	318
Dearborn	384	140	6	35	565
Decatur	130	322	0	17	469
DeKalb	126	152	0	14	292
Delaware	401	918	8	3	1,330
Dubois	88	234	2	0	324
Elkhart	1,531	383	28	30	1,972
Fayette	191	128	3	8	330
Floyd	215	137	0	25	377
Fountain	32	49	0	1	82
Franklin*	84	0	2	13	99
Fulton	95	20	2	0	117
Gibson	104	37	1	27	169
Grant	406	149	10	26	591
Greene	124	68	1	0	193
Hamilton	323	257	1	88	669
Hancock	146	248	1	39	434
Harrison	120	45	4	4	173
Hendricks	225	98	2	58	383
Henry	242	56	1	23	322
Howard	303	473	4	40	820
Huntington	327	45	0	48	420
Jackson	207	94	6	17	324
Jasper	72	91	1	3	167
Jay	213	27	3	0	243
Jefferson	216	281	8	11	516
Jennings	135	24	5	17	181
Johnson	334	283	5	54	676
Knox	48	181	0	0	229
Kosciusko	205	25	4	16	250
LaGrange	61	84	0	8	153
Lake	1,152	288	30	0	1,470
LaPorte	400	177	11	6	594
Lawrence	172	270	1	11	454
Madison	1,097	332	0	15	1,444
Marion	5,335	2,755	23	99	8,212

*Counties that are not participating in Community Corrections

** Community Corrections data as of 11/04/16

INDIANA DEPARTMENT OF CORRECTION
ADULT OFFENDERS
by County of Commitment
for November 2016
snapshot date: 11/01/2016

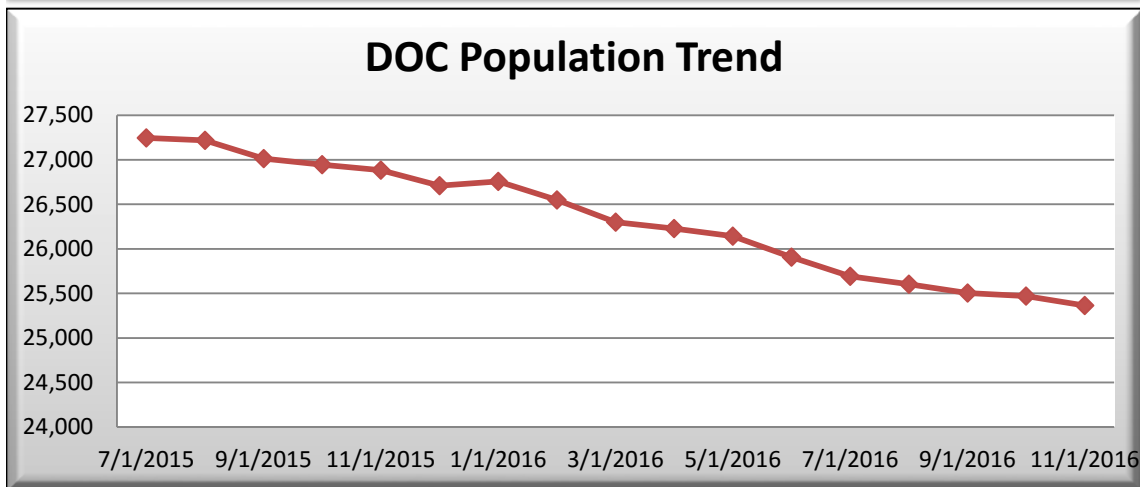
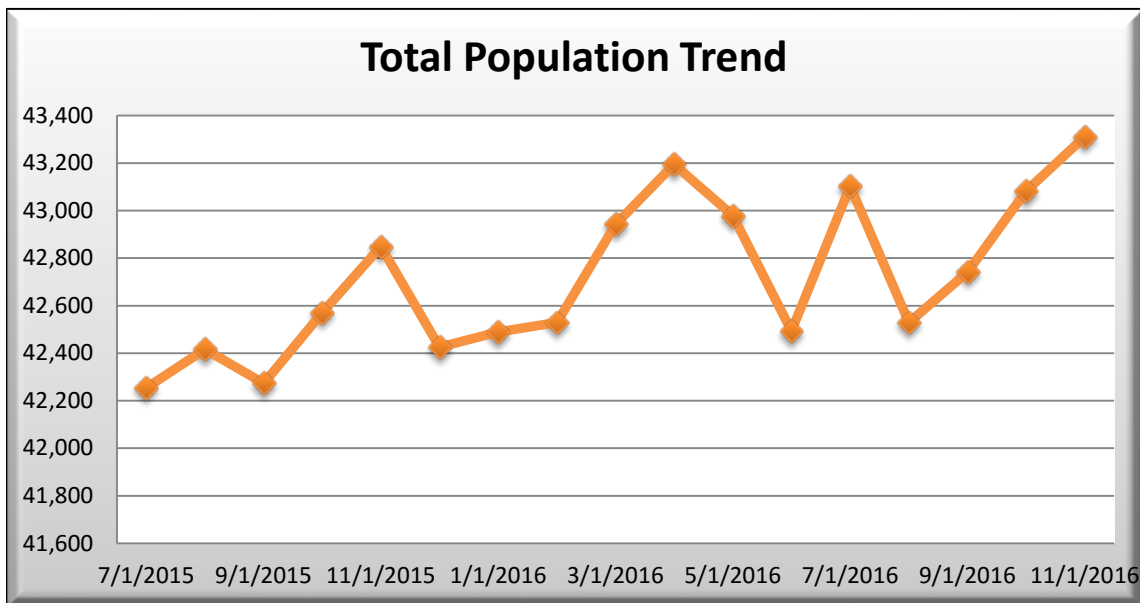
County of Commit	Department of Correction	**Community Corrections Programs	Local Jail Holds		COUNTY TOTALS
			DOC Contract	Statutorily Mandated	
Marshall	136	68	3	18	225
Martin	48	83	0	0	131
Miami	72	40	5	0	117
Monroe	323	503	8	7	841
Montgomery	177	59	0	14	250
Morgan	187	123	2	48	360
Newton*	50	0	0	5	55
Noble	129	519	5	10	663
Ohio	39	13	1	0	53
Orange	51	130	0	0	181
Owen	39	184	0	7	230
Parke	40	15	0	7	62
Perry	56	51	0	8	115
Pike	69	75	1	0	145
Porter	263	137	0	12	412
Posey	96	36	0	12	144
Pulaski	35	7	1	5	48
Putnam	91	55	3	18	167
Randolph	52	55	2	0	109
Ripley	105	80	0	23	208
Rush	80	46	0	7	133
St Joseph	1,036	220	30	68	1,354
Scott	165	112	1	0	278
Shelby	314	143	4	36	497
Spencer	33	102	2	0	137
Starke	102	43	0	14	159
Steuben	117	129	0	10	256
Sullivan	41	29	0	6	76
Switzerland	20	12	3	0	35
Tippecanoe	755	340	11	35	1,141
Tipton	10	8	1	0	19
Union	27	17	0	1	45
Vanderburgh	832	444	9	81	1,366
Vermillion	65	36	0	4	105
Vigo	410	414	4	0	828
Wabash	177	53	4	31	265
Warren	17	18	1	20	56
Warrick	54	20	2	0	76
Washington	118	149	1	0	268
Wayne	474	77	5	37	593
Wells	145	64	1	25	235
White	77	75	1	36	189
Whitley	93	284	1	16	394
Missing	15	0	0	0	15
TOTALS	25,364	16,047	363	1,537	43,311
			1,900		

*Counties that are not participating in Community Corrections

** Community Corrections data as of 11/04/16

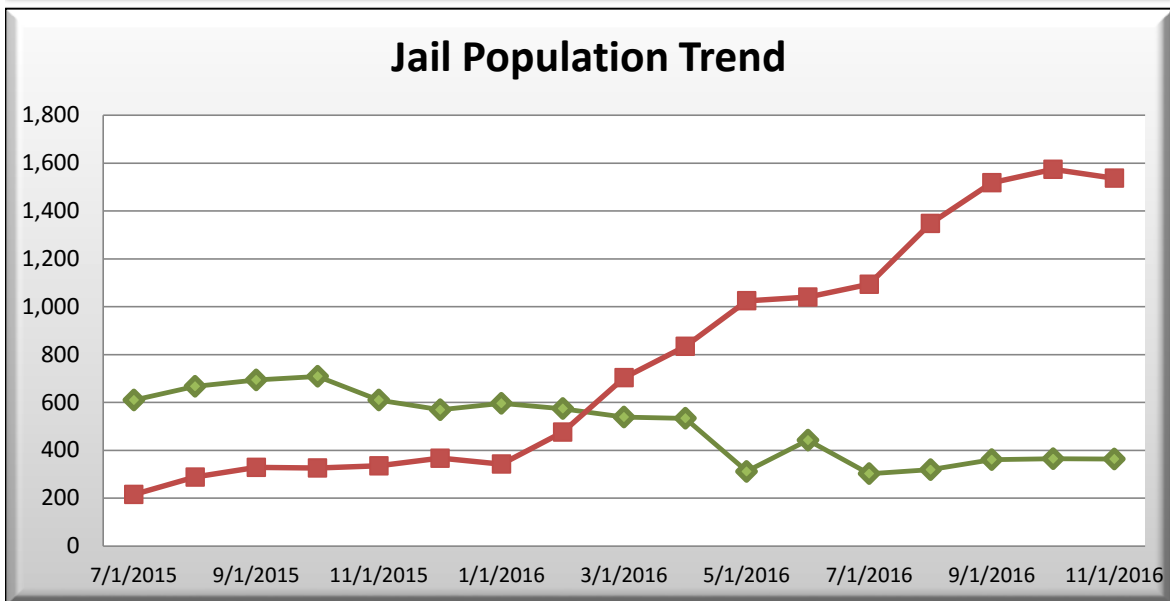
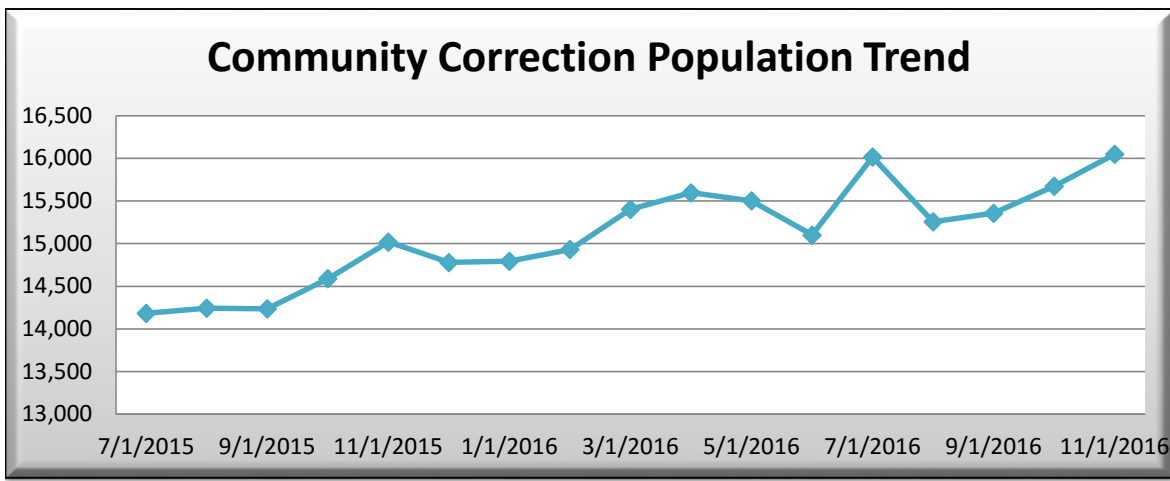
INDIANA DEPARTMENT OF CORRECTION
ADULT OFFENDERS
Population Trend Summary
for November 2016
snapshot date: 11/01/2016

Date	DOC Adult	Community Corrections	Jail DOC Contract	Jail Statutorily Mandated	Total
7/1/2015	27,246	14,183	610	215	42,254
8/1/2015	27,217	14,244	667	288	42,416
9/1/2015	27,015	14,236	694	328	42,273
10/1/2015	26,946	14,589	709	326	42,570
11/1/2015	26,885	15,019	610	335	42,849
12/1/2015	26,711	14,779	569	367	42,426
1/1/2016	26,759	14,793	596	342	42,490
2/1/2016	26,548	14,931	574	476	42,529
3/1/2016	26,301	15,402	539	703	42,942
4/1/2016	26,230	15,596	534	835	43,195
5/1/2016	26,142	15,501	312	1,025	42,980
6/1/2016	25,908	15,101	443	1,041	42,493
7/1/2016	25,691	16,016	302	1,094	43,103
8/1/2016	25,605	15,257	319	1,348	42,529
9/1/2016	25,506	15,357	361	1,518	42,742
10/3/2016	25,471	15,672	365	1,574	43,082
11/1/2016	↓ 25,364	↑ 16,047	↓ 363	↓ 1,537	↑ 43,311



INDIANA DEPARTMENT OF CORRECTION
ADULT OFFENDERS
Population Trend Summary
for November 2016
snapshot date: 11/01/2016

Date	DOC Adult	Community Corrections	Jail DOC Contract	Jail Statutorily Mandated	Total
7/1/2015	27,246	14,183	610	215	42,254
8/1/2015	27,217	14,244	667	288	42,416
9/1/2015	27,015	14,236	694	328	42,273
10/1/2015	26,946	14,589	709	326	42,570
11/1/2015	26,885	15,019	610	335	42,849
12/1/2015	26,711	14,779	569	367	42,426
1/1/2016	26,759	14,793	596	342	42,490
2/1/2016	26,548	14,931	574	476	42,529
3/1/2016	26,301	15,402	539	703	42,942
4/1/2016	26,230	15,596	534	835	43,195
5/1/2016	26,142	15,501	312	1,025	42,980
6/1/2016	25,908	15,101	443	1,041	42,493
7/1/2016	25,691	16,016	302	1,094	43,103
8/1/2016	25,605	15,257	319	1,348	42,529
9/1/2016	25,506	15,357	361	1,518	42,742
10/3/2016	25,471	15,672	365	1,574	43,082
11/1/2016	↓ 25,364	↑ 16,047	↓ 363	↓ 1,537	↑ 43,311



INDIANA DEPARTMENT OF CORRECTION
by highest felony classification
for November 2016
snapshot date: 11/01/2016

Minimum Security - Adult MALE																
Facility Name	Beds	Offenders	% Capacity	Murder	FA	FB	FC	FD	F1	F2	F3	F4	F5	F6	HO	
Chain O'Lakes	129	121	93.8%	.	11	52	12	4	.	1	4	7	24	6	.	
Edinburgh	344	320	93.0%	.	20	120	39	25	.	2	3	27	73	11	.	
Miami - MCA	204	198	97.1%	6	37	62	23	11	.	.	1	11	38	9	.	
New Castle - NCA	204	203	99.5%	.	5	66	19	23	.	1	2	16	66	5	.	
Pendleton - IRO	220	190	86.4%	19	28	71	26	11	.	.	.	7	23	5	.	
Westville - WCA	379	361	95.3%	.	13	99	38	15	.	1	6	33	126	30	.	
Wabash Valley - WVA	198	156	78.8%	.	10	61	17	9	.	.	1	13	38	6	1	
Indianapolis Re-Entry	420	272	64.8%	13	64	149	28	.	.	.	2	4	12	.	.	
Sub-Total	2,098	1,821	86.8%	38	188	680	202	98	0	5	19	118	400	72	1	

Re-Entry & Work Release - Adult MALE																
Facility Name	Beds	Offenders	% Capacity	Murder	FA	FB	FC	FD	F1	F2	F3	F4	F5	F6	HO	
Bartholomew Co. Re-Entry	8	8	100.0%	.	1	5	2	
Chain O'Lakes Re-Entry	7	4	57.1%	.	1	2	1	.	.	
Clark Co. Re-Entry	0	0	100.0%	
Duvall Center Re-Entry	18	18	100.0%	2	2	6	7	1	
Elkhart Co. Re-Entry	0	0	100.0%	
Lake Co. Re-Entry	7	7	100.0%	.	2	4	1	
South Bend Re-Entry	172	137	79.7%	2	20	68	19	11	.	.	1	2	10	4	.	
VOA/Hope Hall Re-Entry	29	29	100.0%	1	3	15	.	4	.	.	.	1	5	.	.	
Starke Co. PI - TC	36	35	97.2%	.	.	6	1	1	.	.	.	12	12	3	.	
Sub-Total	277	238	85.9%	5	29	106	30	17	0	0	1	15	28	7	0	

Medium Security - Adult MALE																
Facility Name	Beds	Offenders	% Capacity	Murder	FA	FB	FC	FD	F1	F2	F3	F4	F5	F6	HO	
Branchville	1,485	1262	85.0%	9	46	485	146	56	.	21	80	145	220	54	.	
Correctional Industrial	1,449	1416	97.7%	98	416	603	89	22	6	50	63	26	30	13	.	
Indiana State Prison ISO	385	243	63.1%	24	56	83	32	6	.	1	4	6	25	6	.	
Plainfield	1,696	1503	88.6%	39	120	561	214	76	.	11	66	119	235	62	.	
Putnamville	2,510	1982	79.0%	29	123	759	280	65	.	38	142	154	308	81	1	
Heritage Trail	868	723	83.3%	1	4	211	112	68	.	4	49	53	186	34	1	
Westville	2,941	2351	79.9%	31	164	831	321	129	.	18	127	182	436	112	1	
New Castle	2,431	2404	98.9%	15	683	992	329	32	2	1	74	128	128	20	.	
Sub-Total	13,765	11,884	86.3%	246	1,612	4,525	1,523	454	8	144	605	813	1,568	382	3	

Maximum Security - Adult MALE																
Miami	2,984	2890	96.8%	178	838	1186	187	32	59	90	135	59	96	27	.	

INDIANA DEPARTMENT OF CORRECTION
by highest felony classification
for November 2016
snapshot date: 11/01/2016

Indiana State Prison	2,067	1934	93.6%	702	767	357	33	5	27	11	16	5	7	3	.
Pendleton	1,353	1301	96.2%	443	539	225	36	3	15	10	10	7	8	4	0
Pendleton Treatment Unit	298	179	60.1%	42	45	55	13	3	3	1	6	2	6	1	.
ISR Secure Housing Unit	69	40	58.0%	11	9	15	3	1	1	.
New Castle Annex	486	438	90.1%	60	124	186	42	3	.	.	5	7	8	3	.
New Castle Mental Health	128	115	89.8%	17	33	33	14	2	.	.	2	3	6	2	.
WCU Secure Housing Unit	110	104	94.5%	16	18	43	11	3	.	.	5	1	5	1	.
Wabash Valley	1,784	1648	92.4%	532	671	293	41	7	33	8	20	12	23	5	0
WVS Secure Housing Unit	216	167	77.3%	43	30	68	13	1	.	.	1	2	6	3	.
Sub-Total	9,495	8,816	92.8%	2,044	3,074	2,461	393	59	137	120	200	98	166	50	0

Intake Facility - Adult MALE																
Reception Diag. Center	695	413	59.4%	10	13	87	40	38	5	16	20	50	101	33	.	
Sub-Total	695	413	59.4%	10	13	87	40	38	5	16	20	50	101	33	0	

Minumum Security & Re-Entry - Adult FEMALE																
Facility Name	Beds	Offenders	% Capacity	Murder	FA	FB	FC	FD	F1	F2	F3	F4	F5	F6	HO	
Madison	662	522	78.9%	5	28	188	66	34	.	7	16	58	93	27	.	
Brandon Hall Re-Entry	27	27	100.0%	.	.	4	9	8	.	.	1	2	2	1	.	
Crane House	20	20	100.0%	.	1	4	3	5	.	.	.	2	3	2	.	
Jefferson Co. Re-Entry	58	26	44.8%	.	2	14	2	2	.	.	.	1	4	1	.	
Theodora House	7	7	100.0%	.	.	5	.	2	
VOA/Evansville/Female	1	1	100.0%	.	.	.	1	
Sub-Total	775	603	77.8%	5	31	215	81	51	0	7	17	63	102	31	0	

Medium Security - Adult FEMALE																
Facility Name	Beds	Offenders	% Capacity	Murder	FA	FB	FC	FD	F1	F2	F3	F4	F5	F6	HO	
Rockville	981	905	92.3%	48	152	288	87	58	3	19	56	46	105	42	1	
Sub-Total	981	905	92.3%	48	152	288	87	58	3	19	56	46	105	42	1	

Maximum Security - Adult FEMALE																
Women's Prison	631	587	93.0%	70	86	154	70	42	4	11	23	24	71	32	.	
Rockville Intake	288	97	33.7%	.	.	12	14	15	.	2	12	11	25	6	.	
Sub-Total	919	684	74.4%	70	86	166	84	57	4	13	35	35	96	38	0	

TOTAL	29,005	25,364	87.4%	2,466	5,185	8,528	2,440	832	157	324	953	1,238	2,566	655	5
--------------	---------------	---------------	--------------	--------------	--------------	--------------	--------------	------------	------------	------------	------------	--------------	--------------	------------	----------

INDIANA DEPARTMENT OF CORRECTION
ADULT OFFENDERS
by Most Serious Offense, Alphabetical
for November 2016
snapshot date: 11/01/2016

Most Serious Offense	Murder	FA	FB	FC	FD	F1	F2	F3	F4	F5	F6	HO	Total
Accident Fail To Stop Resulting in Serious Injury or Death	.	.	4	1	1	12	.	.	18
Aggravated Battery	.	.	284	.	.	3	.	110	397
Aiding Inducing/Causing An Offense	.	52	99	12	.	2	5	16	17	37	.	.	240
Aiding in Manufacture of Sch II Controlled Substance	2	.	2
Animal Fighting Contest	1	1
Arson	.	19	72	2	32	.	.	.	125
Assisting A Criminal	.	.	.	9	1	4	2	.	16
Assisting Suicide	.	.	.	1	1
Attempt To Commit Felony	.	572	175	22	4	38	6	25	9	39	3	.	893
Auto Theft, Receiving Stolen Auto Parts	.	.	.	30	19	1	53	.	103
Battery	.	25	63	245	20	.	3	20	1	386	32	.	795
Battery By Bodily Waste	.	.	.	3	7	10
Battery On Law Enforcement	1	1
Battery To A Child Causing Death	.	7	7
Bribery	2	.	.	2
Burglary	.	287	1,653	403	.	12	44	10	496	308	.	.	3,213
Carjacking	.	.	63	63
Carrying Handgun Without License	.	.	.	30	30
Causing Suicide	.	.	1	1
Check Fraud	.	.	.	8	2	1	.	11
Child Exploitation	.	.	.	12	1	8	.	.	21
Child Molesting	.	1,453	511	212	.	68	.	51	76	.	.	.	2,371
Child Seduction	.	.	.	3	2	3	.	.	8
Child Solicitation	.	.	.	12	4	.	.	.	5	20	.	.	41
Conspiracy	.	128	133	17	1	2	16	19	15	29	.	.	360
Controlled Substance Registration	.	.	.	6	5	1	1	.	13
Conversion	2	.	.	2
Corrupt Business Influence	.	.	.	34	28	.	.	62
Criminal Confinement	.	.	185	38	9	.	2	43	.	43	3	.	323
Criminal Deviate Conduct	.	143	106	249
Criminal Gang Activity	1	1
Criminal Recklessness	.	.	.	26	16	31	3	.	76
Criminal Trespass	1	2	.	3
Dangerous Control Of A Handgun	2	.	.	2
Dangerous Possession Of A Handgun	.	.	.	1	1
Deal Sub Represented To Be Controlled Sub	3	.	3
Deal Substance Represented To Be Controlled Substance	2	2

INDIANA DEPARTMENT OF CORRECTION
ADULT OFFENDERS
by Most Serious Offense, Alphabetical
for November 2016
snapshot date: 11/01/2016

Most Serious Offense	Murder	FA	FB	FC	FD	F1	F2	F3	F4	F5	F6	HO	Total
Dealing In A Schedule V Controlled Substance	.	.	2	1	.	.	3
Dealing In Cocaine Or Narcotic Drug	.	995	1,093	1	.	.	94	72	127	189	.	.	2,571
Dealing In Marijuana, Hash, or Hash Oil	.	.	.	14	5	14	3	.	36
Dealing In Methamphetamine	.	269	947	.	.	.	88	83	176	267	.	.	1,830
Dealing In Schedule IV Controlled Substance	.	.	24	22	.	.	.	4	1	5	.	.	56
Dealing Possessing Look-Alike Substance	.	.	.	8	13	3	.	24
Dealing In a Schedule I, II, or III Controlled Substance	.	109	568	.	.	.	9	4	15	15	2	.	722
Disarming A Law Enforcement Officer	.	.	.	6	.	.	.	1	.	6	.	.	13
Distribute Destructive Device To Minor	.	.	1	1
Domestic Battery	29	22	.	51
Driving While Intoxicated	1	1
Escape	2	49	41	.	92
Fail To Return To Accident Resulting in Serious Injury	8	8
Fail To Stop After Accident - Operating Vehicle Intoxicated	.	.	5	5
Fail To Stop At An Accident/Sbi/Prior	1	1
Failure Of Sex Offender To Possess Id	1	1
Failure To Appear	1	.	1
Failure To Register As A Sex Offender	.	.	.	48	8	105	7	.	168
Failure To Return Lawful Detention/Escape	.	.	13	45	16	74
Firearm Within 1 Mile School Property Without License	.	.	.	28	28
Forgery,Counterfeiting,Application Fraud	.	.	.	292	6	14	.	312
Fraud	10	8	.	18
Fraud On A Financial Institution	.	.	.	26	46	.	.	72
Habitual Offender	2	2
Habitual Offender Substance Abuse	4	2	6
Handgun Violation	.	.	.	2	2
Handgun Violation (Felony Within 15 Yrs)	.	.	.	17	173	.	.	190
Home Improvement Fraud Enhancement	.	.	.	5	5
Home Improvement Fraud Offenses	2	2
Human Sexual Trafficking	.	.	3	2	1	.	.	.	6
Identity Deception	.	.	.	1	4	3	.	8
Illegal Possession Of Firearm By Felon	.	.	.	2	2
Incest	.	.	24	17	2	4	.	.	47
Insurance Fraud	.	.	.	1	1
Intimidation	.	.	.	33	17	51	13	.	114
Invasion Of Privacy	2	5	.	7
Involuntary Manslaughter	.	.	.	3	3

INDIANA DEPARTMENT OF CORRECTION
ADULT OFFENDERS
by Most Serious Offense, Alphabetical
for November 2016
snapshot date: 11/01/2016

Most Serious Offense	Murder	FA	FB	FC	FD	F1	F2	F3	F4	F5	F6	HO	Total
Kidnapping	.	89	3	4	.	2	.	.	98
Maintaining Common Nuisance	17	13	.	30
Mischief	.	.	.	1	1
Murder	2,466	2,466
Neglect Of A Dependent	.	.	55	20	9	9	3	.	96
Neglect Of A Dependent Resulting in Serious Injury	36	36
Neglect Of Dependent Resulting In Death	.	65	.	.	.	9	74
Non Support Of Dependent Child	.	.	.	86	25	3	2	.	116
Obliterating Handgun I.D.	.	.	.	3	4	.	.	7
Obstruction Of Justice	2	5	.	7
Operate Vehicle After Suspended For Life	.	.	.	139	239	.	.	378
Operating Vehicle Intoxicated Resulting in Death	.	.	60	9	24	14	.	.	107
Operating Vehicle Intoxicated Resulting in Serious Bodily Injury	.	.	.	8	4	9	3	.	24
Operating Vehicle While Intoxicated-Previous Conviction	.	.	.	1	62	2	53	.	118
Operating Vehicle With Schedule I in Body - Causing Death	.	.	.	1	1
Operating Vehicle-Habit Traffic Violator	.	.	.	3	25	16	.	44
Opererating Vehicle - Schedule I Or II Control Substance	3	3
Opererating Vehicle While Intoxicated - Endangering Person	15	15
Permitting Child To Possess Firearm	.	.	.	1	1
Pointing A Firearm	1	1
Possess Chemical Reagents Or Precursors	.	.	.	22	6	.	.	28
Possess Destructive Device Or Explosive	.	1	1	2
Possess Methamphetamine Without Pay Tax	1	1
Possess Of Precursors	16	10	.	26
Possession Of A Controlled Substance	.	.	1	37	49	1	.	88
Possession Of Child Pornography	5	.	5
Possession Of Cocaine Or Narcotic Drug	.	68	104	53	32	.	.	9	23	48	40	.	377
Possession Of Dangerous Device	5	1	.	.	6
Possession Of Marijuana, Hash, Hash Oil	24	24
Possession Of Methamphetamine	.	7	79	33	45	.	.	22	20	58	38	.	302
Possession Of Paraphernalia	4	3	.	7
Possession Of Syringes Or Needles	.	.	.	2	13	13	13	.	41
Possession Or Use Of Legend Drug	.	.	.	1	4	3	.	8
Prisoner Poss. Dangerous Device/Material	.	.	11	3	14
Promoting Prostitution	.	.	.	3	3
Promoting Prostitution Under Age 18	.	.	6	6
Prostitution	1	1	.	2

INDIANA DEPARTMENT OF CORRECTION
ADULT OFFENDERS
by Most Serious Offense, Alphabetical
for November 2016
snapshot date: 11/01/2016

Most Serious Offense	Murder	FA	FB	FC	FD	F1	F2	F3	F4	F5	F6	HO	Total
Public Indecency	2	.	2
Rape	.	278	155	.	.	23	.	32	488
Reckless Homicide	.	.	.	26	15	.	.	41
Reckless Vehicle Work Zone Causing Death	.	.	.	1	1
Removing, Damaging, Or Altering a VIN	.	.	.	1	1
Residential Entry	7	15	.	22
Resisting Law Enforcement	.	.	7	4	21	.	.	3	.	6	26	.	67
Robbery	.	262	1,247	173	.	.	32	377	.	159	.	.	2,250
Sale Of Unregistered Security	.	.	.	2	2
Security Fraud	.	.	2	1	3
Sexual Battery	7	.	.	.	3	.	5	.	15
Sexual Misconduct Gov Employe W/Detainee	.	.	.	1	1
Sexual Misconduct With A Minor	.	3	279	61	2	.	.	.	44	33	.	.	422
Stalking	.	.	3	13	5	20	.	.	41
Strangulation	14	13	.	27
Theft,Receiving Stolen Property	.	.	.	7	220	6	158	.	391
Trafficking With An Inmate	.	.	.	15	24	.	.	39
Unlawful Firearm Poss By Serious Felon	.	.	438	137	.	.	.	575
Unlawful Transfer of Handgun Ownership	1	.	.	1
Vicarious Sexual Gratification	.	.	3	3	1	.	.	.	7
Viol/Failure Of Carriers Duty To Warn	1	1
Violation Of Custody Order	1	1
Voluntary Manslaughter	.	353	49	.	.	.	21	423
Voyeurism	2	2
Welfare Fraud	.	.	.	10	2	12
Total	2,466	5,185	8,528	2,440	832	157	324	953	1,238	2,566	655	4	25,348

INDIANA DEPARTMENT OF CORRECTION
ADULT OFFENDERS
by Most Serious Offense, Ranked
for for November 2016
snapshot date: 11/01/2016

Most Serious Offense	Murder	FA	FB	FC	FD	F1	F2	F3	F4	F5	F6	HO	Total
Burglary	.	287	1,653	403	.	12	44	10	496	308	.	.	3,213
Dealing In Cocaine Or Narcotic Drug	.	995	1,093	1	.	.	94	72	127	189	.	.	2,571
Murder	2,466	2,466
Child Molesting	.	1,453	511	212	.	68	.	51	76	.	.	.	2,371
Robbery	.	262	1,247	173	.	.	32	377	.	159	.	.	2,250
Dealing In Methamphetamine	.	269	947	.	.	.	88	83	176	267	.	.	1,830
Attempt To Commit Felony	.	572	175	22	4	38	6	25	9	39	3	.	893
Battery	.	25	63	245	20	.	3	20	1	386	32	.	795
Dealing In a Schedule I, II, or III Controlled Substance	.	109	568	.	.	.	9	4	15	15	2	.	722
Unlawful Firearm Poss By Serious Felon	.	.	438	137	.	.	.	575
Rape	.	278	155	.	.	23	.	32	488
Voluntary Manslaughter	.	353	49	.	.	.	21	423
Sexual Misconduct With A Minor	.	3	279	61	2	.	.	.	44	33	.	.	422
Aggravated Battery	.	.	284	.	.	3	.	110	397
Theft,Receiving Stolen Property	.	.	.	7	220	6	158	.	391
Operate Vehicle After Suspended For Life	.	.	.	139	239	.	.	378
Possession Of Cocaine Or Narcotic Drug	.	68	104	53	32	.	.	9	23	48	40	.	377
Conspiracy	.	128	133	17	1	2	16	19	15	29	.	.	360
Criminal Confinement	.	.	185	38	9	.	2	43	.	43	3	.	323
Forgery,Counterfeiting,Application Fraud	.	.	.	292	6	14	.	312
Possession Of Methamphetamine	.	7	79	33	45	.	.	22	20	58	38	.	302
Criminal Deviate Conduct	.	143	106	249
Aiding Inducing/Causing An Offense	.	52	99	12	.	2	5	16	17	37	.	.	240
Handgun Violation (Felony Within 15 Yrs)	.	.	.	17	173	.	.	190
Failure To Register As A Sex Offender	.	.	.	48	8	105	7	.	168
Arson	.	19	72	2	32	.	.	.	125
Operating Vehicle While Intoxicated-Previous Conviction	.	.	.	1	62	2	53	.	118
Non Support Of Dependent Child	.	.	.	86	25	3	2	.	116
Intimidation	.	.	.	33	17	51	13	.	114
Operating Vehicle Intoxicated Resulting in Death	.	.	60	9	24	14	.	.	107
Auto Theft, Receiving Stolen Auto Parts	.	.	.	30	19	1	53	.	103
Kidnapping	.	89	3	4	.	2	.	.	98
Neglect Of A Dependent	.	.	55	20	9	9	3	.	96
Escape	2	49	41	.	92
Possession Of A Controlled Substance	.	.	1	37	49	1	.	88
Criminal Recklessness	.	.	.	26	16	31	3	.	76
Failure To Return Lawful Detention/Escape	.	.	13	45	16	74

INDIANA DEPARTMENT OF CORRECTION
ADULT OFFENDERS
by Most Serious Offense, Ranked
for for November 2016
snapshot date: 11/01/2016

Most Serious Offense	Murder	FA	FB	FC	FD	F1	F2	F3	F4	F5	F6	HO	Total
Neglect Of Dependent Resulting In Death	.	65	.	.	.	9	74
Fraud On A Financial Institution	.	.	.	26	46	.	.	72
Resisting Law Enforcement	.	.	7	4	21	.	.	3	.	6	26	.	67
Carjacking	.	.	63	63
Corrupt Business Influence	.	.	.	34	28	.	.	62
Dealing In Schedule IV Controlled Substance	.	.	24	22	.	.	.	4	1	5	.	.	56
Domestic Battery	29	22	.	51
Incest	.	.	24	17	2	4	.	.	47
Operating Vehicle-Habit Traffic Violator	.	.	.	3	25	16	.	44
Child Solicitation	.	.	.	12	4	.	.	.	5	20	.	.	41
Possession Of Syringes Or Needles	.	.	.	2	13	13	13	.	41
Reckless Homicide	.	.	.	26	15	.	.	41
Stalking	.	.	3	13	5	20	.	.	41
Trafficking With An Inmate	.	.	.	15	24	.	.	39
Dealing In Marijuana, Hash, or Hash Oil	.	.	.	14	5	14	3	.	36
Neglect Of A Dependent Resulting in Serious Injury	36	36
Carrying Handgun Without License	.	.	.	30	30
Maintaining Common Nuisance	17	13	.	30
Firearm Within 1 Mile School Property Without License	.	.	.	28	28
Possess Chemical Reagents Or Precursors	.	.	.	22	6	.	.	28
Strangulation	14	13	.	27
Possess Of Precursors	16	10	.	26
Dealing Possessing Look-Alike Substance	.	.	.	8	13	3	.	24
Operating Vehicle Intoxicated Resulting in Serious Bodily Injury	.	.	.	8	4	9	3	.	24
Possession Of Marijuana, Hash, Hash Oil	24	24
Residential Entry	7	15	.	22
Child Exploitation	.	.	.	12	1	8	.	.	21
Accident Fail To Stop Reulting in Serious Injury or Death	.	.	4	1	1	12	.	.	18
Fraud	10	8	.	18
Assisting A Criminal	.	.	.	9	1	4	2	.	16
Opererating Vehicle While Intoxicated - Endangering Person	15	15
Sexual Battery	7	.	.	.	3	.	5	.	15
Prisoner Poss. Dangerous Device/Material	.	.	11	3	14
Controlled Substance Registration	.	.	.	6	5	1	1	.	13
Disarming A Law Enforcement Officer	.	.	.	6	.	.	.	1	.	6	.	.	13
Welfare Fraud	.	.	.	10	2	12
Check Fraud	.	.	.	8	2	1	.	11

INDIANA DEPARTMENT OF CORRECTION
ADULT OFFENDERS
by Most Serious Offense, Ranked
for for November 2016
snapshot date: 11/01/2016

Most Serious Offense	Murder	FA	FB	FC	FD	F1	F2	F3	F4	F5	F6	HO	Total
Battery By Bodily Waste	.	.	.	3	7	10
Child Seduction	.	.	.	3	2	3	.	.	8
Fail To Return To Accident Resulting in Serious Injury	8	8
Identity Deception	.	.	.	1	4	3	.	8
Possession Or Use Of Legend Drug	.	.	.	1	4	3	.	8
Battery To A Child Causing Death	.	7	7
Invasion Of Privacy	2	5	.	7
Obliterating Handgun I.D.	.	.	.	3	4	.	.	7
Obstruction Of Justice	2	5	.	7
Possession Of Paraphernalia	4	3	.	7
Vicarious Sexual Gratification	.	.	3	3	1	.	.	.	7
Habitual Offender Substance Abuse	4	2	6
Human Sexual Trafficking	.	.	3	2	1	.	.	.	6
Possession Of Dangerous Device	5	1	.	.	6
Promoting Prostitution Under Age 18	.	.	6	6
Fail To Stop After Accident - Operating Vehicle Intoxicated	.	.	5	5
Home Improvement Fraud Enhancement	.	.	.	5	5
Possession Of Child Pornography	5	.	5
Criminal Trespass	1	2	.	3
Deal Sub Represented To Be Controlled Sub	3	.	3
Dealing In A Schedule V Controlled Substance	.	.	2	1	.	.	3
Involuntary Manslaughter	.	.	.	3	3
Opererating Vehicle - Schedule I Or II Control Substance	3	3
Promoting Prostitution	.	.	.	3	3
Security Fraud	.	.	2	1	3
Aiding in Manufacture of Sch II Controlled Substance	2	.	2
Bribery	2	.	.	2
Conversion	2	.	.	2
Dangerous Control Of A Handgun	2	.	.	2
Deal Substance Represented To Be Controlled Substance	2	2
Habitual Offender	2	2
Handgun Violation	.	.	.	2	2
Home Improvement Fraud Offenses	2	2
Illegal Possession Of Firearm By Felon	.	.	.	2	2
Possess Destructive Device Or Explosive	.	1	1	2
Prostitution	1	1	.	2
Public Indecency	2	.	2

INDIANA DEPARTMENT OF CORRECTION
ADULT OFFENDERS
by Most Serious Offense, Ranked
for for November 2016
snapshot date: 11/01/2016

Most Serious Offense	Murder	FA	FB	FC	FD	F1	F2	F3	F4	F5	F6	HO	Total
Sale Of Unregistered Security	.	.	.	2	2
Voyeurism	2	2
Animal Fighting Contest	1	1
Assisting Suicide	.	.	.	1	1
Battery On Law Enforcement	1	1
Causing Suicide	.	.	1	1
Criminal Gang Activity	1	1
Dangerous Possession Of A Handgun	.	.	.	1	1
Distribute Destructive Device To Minor	.	.	1	1
Driving While Intoxicated	1	1
Fail To Stop At An Accident/Sbi/Prior	1	1
Failure Of Sex Offender To Possess Id	1	1
Failure To Appear	1	.	1
Insurance Fraud	.	.	.	1	1
Mischief	.	.	.	1	1
Operating Vehicle With Schedule I in Body - Causing Death	.	.	.	1	1
Permitting Child To Possess Firearm	.	.	.	1	1
Pointing A Firearm	1	1
Possess Methamphetamine Without Pay Tax	1	1
Reckless Vehicle Work Zone Causing Death	.	.	.	1	1
Removing, Damaging, Or Altering a VIN	.	.	.	1	1
Sexual Misconduct Gov Employe W/Detainee	.	.	.	1	1
Unlawful Transfer of Handgun Ownership	1	.	.	1
Viol/Failure Of Carriers Duty To Warn	1	1
Violation Of Custody Order	1	1
Total	2,466	5,185	8,528	2,440	832	157	324	953	1,238	2,566	655	4	25,348

INDIANA DEPARTMENT OF CORRECTION
ADULT OFFENDERS
by Most Serious Offense
for November 2016
snapshot date: 11/01/2016

Branchville Correctional Facility												
Most Serious Offense	Murder	FA	FB	FC	FD	F1	F2	F3	F4	F5	F6	Total
Accident Fail To Stop Resulting in Serious Injury or Death	1	.	1
Aggravated Battery	.	.	7	7	.	.	.	14
Aiding Inducing/Causing An Offense	.	.	8	1	.	.	1	1	1	2	.	14
Arson	.	.	3	3
Assisting A Criminal	1	.	1
Attempt To Commit Felony	.	8	11	1	.	.	1	1	2	3	.	27
Auto Theft, Receiving Stolen Auto Parts	.	.	.	1	2	2	5
Battery	.	.	2	23	.	.	.	2	.	32	7	66
Battery On Law Enforcement	1	1
Burglary	.	4	110	30	.	.	1	1	62	36	.	244
Carrying Handgun Without License	.	.	.	1	1
Conspiracy	.	2	12	3	.	.	1	4	1	5	.	28
Controlled Substance Registration	.	.	.	1	1	.	2
Corrupt Business Influence	1	.	1
Criminal Confinement	.	.	7	2	1	.	.	6	.	3	1	20
Criminal Recklessness	.	.	.	2	1	2	2	7
Criminal Trespass	1	1
Dealing In Cocaine Or Narcotic Drug	.	14	75	.	.	.	6	8	11	10	.	124
Dealing In Marijuana, Hash, or Hash Oil	.	.	.	2	3	.	5
Dealing In Methamphetamine	.	10	99	.	.	.	9	16	35	18	.	187
Dealing In Sched Iv Controlled Substance	2	.	.	.	2
Dealing In Schedule IV Controlled Substance	.	.	2	2
Dealng A Sched I, Ii, Iii Control Subst	2	1	.	.	.	3
Dealing In a Schedule I, II, or III Controlled Substance	.	3	47	1	.	51
Disarming A Law Enforcement Officer	.	.	.	1	1
Domestic Battery	1	1	2
Escape	1	7	2	10
Failure To Register As A Sex Offender	.	.	.	2	10	.	12
Failure To Return Lawful Detention/Escape	.	.	1	2	2	5
Firearm Within 1 Mile School Property Without License	.	.	.	1	1
Forgery,Counterfeiting,Application Fraud	.	.	.	17	1	18
Fraud	1	1	2
Fraud On A Financial Institution	6	.	6
Habitual Offender Substance Abuse	1	1
Handgun Violation (Felony Within 15 Yrs)	.	.	.	1	17	.	18
Home Improvement Fraud Enhancement	.	.	.	1	1
Intimidation	.	.	.	3	1	3	2	9

INDIANA DEPARTMENT OF CORRECTION
ADULT OFFENDERS
by Most Serious Offense
for November 2016
snapshot date: 11/01/2016

Branchville Correctional Facility												
Most Serious Offense	Murder	FA	FB	FC	FD	F1	F2	F3	F4	F5	F6	Total
Invasion Of Privacy	1	1
Kidnapping	1	.	1
Maintaining Common Nuisance	2	2
Murder	9	9
Neglect Of A Dependent	.	.	2	.	1	3
Non Support Of Dependent Child	.	.	.	11	3	14
Operate Vehicle After Suspended For Life	.	.	.	12	24	.	36
Operating Vehicle Intoxicated Resulting in Death	.	.	6	2	.	.	8
Operating Vehicle Intoxicated Resulting in Serious Bodily Injury	.	.	.	1	1	2
Operating Vehicle While Intoxicated-Previous Conviction	5	1	6
Operating Vehicle-Habit Traffic Violator	.	.	.	1	1	2
Opererating Vehicle While Intoxicated - Endangering Person	1	1
Opererating Vehicle While Intoxicated - Prior Conviction	3	3
Possess Chemical Reagents Or Precursors	.	.	.	4	4
Possess Of Precursors	2	2
Possession Of A Controlled Substance	.	.	.	3	1	4
Possession Of Cocaine Or Narcotic Drug	.	1	9	3	4	.	.	.	4	5	3	29
Possession Of Marijuana, Hash, Hash Oil	3	3
Possession Of Methamphetamine	.	.	11	2	4	.	.	4	6	7	6	40
Possession Of Syringes Or Needles	1	3	.	4
Reckless Homicide	.	.	.	3	1	.	4
Reckless Vehicle Work Zone Causing Death	.	.	.	1	1
Resisting Law Enforcement	.	.	.	1	2	.	.	1	.	.	3	7
Robbery	.	1	44	7	.	.	.	26	.	13	.	91
Sexual Misconduct With A Minor	.	.	1	1
Stalking	.	.	.	1	2	.	3
Strangulation	3	3
Theft,Receiving Stolen Property	15	12	27
Trafficking With An Inmate	2	.	2
Unlawful Firearm Poss By Serious Felon	.	.	26	20	.	.	46
Viol/Failure Of Carriers Duty To Warn	1	1
Voluntary Manslaughter	.	3	2	5
Welfare Fraud	.	.	.	1	1
Total	9	46	485	146	56	.	21	80	145	220	54	1,262

INDIANA DEPARTMENT OF CORRECTION
ADULT OFFENDERS
by Most Serious Offense
for November 2016
snapshot date: 11/01/2016

Correctional Industrial Facility												
Most Serious Offense	Murder	FA	FB	FC	FD	F1	F2	F3	F4	F5	F6	Total
Accident Fail To Stop Resulting in Serious Injury or Death	.	.	1	1
Aggravated Battery	.	.	30	11	.	.	.	41
Aiding Inducing/Causing An Offense	.	6	8	14
Arson	.	4	7	1	.	.	12
Assisting A Criminal	.	.	.	1	1
Attempt To Commit Felony	.	34	13	.	.	1	1	2	.	.	1	52
Auto Theft, Receiving Stolen Auto Parts	.	.	.	2	1	1	4
Battery	.	1	11	11	1	.	.	1	.	7	2	34
Burglary	.	30	154	16	.	1	12	1	14	1	.	229
Carjacking	.	.	7	7
Child Molesting	.	54	6	3	.	1	.	3	2	.	.	69
Conspiracy	.	20	11	.	.	.	2	1	.	.	.	34
Criminal Confinement	.	.	22	.	.	.	1	5	.	.	.	28
Criminal Deviate Conduct	.	3	2	5
Criminal Gang Activity	1	1
Criminal Recklessness	.	.	.	1	1	2
Dealing In Cocaine Or Narcotic Drug	.	133	66	.	.	.	15	5	1	2	.	222
Dealing In Methamphetamine	.	44	50	.	.	.	14	2	1	.	.	111
Dealing In Sched Iv Controlled Substance	1	.	.	.	1
Dealing In Schedule IV Controlled Substance	.	.	2	2
Dealing Possessing Look-Alike Substance	.	.	.	1	1
Dealng In a Schedule I, II, or III Controlled Substance	.	9	28	37
Disarming A Law Enforcement Officer	.	.	.	1	1
Domestic Battery	1	1	2
Escape	2	1	3
Fail To Return To Accident Resulting in Serious Injury	2	.	.	.	2
Failure To Register As A Sex Offender	.	.	.	3	1	1	5
Failure To Return Lawful Detention/Escape	.	.	2	4	6
Firearm Within 1 Mile School Property Without License	.	.	.	2	2
Forgery,Counterfeiting,Application Fraud	.	.	.	14	1	15
Fraud	1	1
Habitual Offender Substance Abuse	1	1

INDIANA DEPARTMENT OF CORRECTION
ADULT OFFENDERS
by Most Serious Offense
for November 2016
snapshot date: 11/01/2016

Correctional Industrial Facility												
Most Serious Offense	Murder	FA	FB	FC	FD	F1	F2	F3	F4	F5	F6	Total
Handgun Violation (Felony Within 15 Yrs)	.	.	.	1	5	.	6
Home Improvement Fraud Enhancement	.	.	.	1	1
Human Sexual Trafficking	.	.	1	1
Incest	.	.	1	1
Intimidation	.	.	.	2	1	3	.	6
Kidnapping	.	9	9
Murder	98	98
Neglect Of A Dependent	.	.	2	2
Neglect Of A Dependent Resulting in Serious Injury	2	.	.	.	2
Neglect Of Dependent Resulting In Death	.	2	.	.	.	2	4
Non Support Of Dependent Child	.	.	.	1	1
Obliterating Handgun I.D.	1	.	1
Operate Vehicle After Suspended For Life	.	.	.	4	3	.	7
Operating Vehicle Intoxicated Resulting in Death	.	.	1	1	.	.	2
Operating Vehicle While Intoxicated-Previous Conviction	1	1	2
Possess Chemical Reagents Or Precursors	.	.	.	1	1
Possess Destructive Device Or Explosive	.	1	1
Possess Of Precursors	1	1
Possession Of A Controlled Substance	.	.	1	1	2	4
Possession Of Cocaine Or Narcotic Drug	.	5	7	.	1	.	.	.	1	.	.	14
Possession Of Marijuana, Hash, Hash Oil	1	1
Possession Of Methamphetamine	.	.	4	2	.	.	.	2	2	.	.	10
Possession Of Syringes Or Needles	1	1
Prisoner Poss. Dangerous Device/Material	.	.	1	1
Promoting Prostitution	.	.	.	1	1
Rape	.	2	6	.	.	1	9
Reckless Homicide	.	.	.	2	2
Resisting Law Enforcement	1	.	.	1	.	.	.	2
Robbery	.	24	113	12	.	.	2	24	.	2	.	177
Sexual Misconduct With A Minor	.	.	7	1	.	.	8
Stalking	1	.	1
Strangulation	1	1	2

INDIANA DEPARTMENT OF CORRECTION
 ADULT OFFENDERS
 by Most Serious Offense
 for November 2016
 snapshot date: 11/01/2016

Correctional Industrial Facility												
Most Serious Offense	Murder	FA	FB	FC	FD	F1	F2	F3	F4	F5	F6	Total
Theft,Receiving Stolen Property	.	.	.	1	7	1	9
Trafficking With An Inmate	.	.	.	1	2	.	3
Unlawful Firearm Poss By Serious Felon	.	.	36	2	.	.	38
Voluntary Manslaughter	.	35	3	.	.	.	3	41
Total	98	416	603	89	22	6	50	63	26	30	13	1,416

INDIANA DEPARTMENT OF CORRECTION
ADULT OFFENDERS
by Most Serious Offense
for November 2016
snapshot date: 11/01/2016

Chain O'Lakes Correctional Facility												
Most Serious Offense	Murder	FA	FB	FC	FD	F1	F2	F3	F4	F5	F6	Total
Aiding Inducing/Causing An Offense	1	.	.	.	1
Attempt To Commit Felony	.	.	1	1	.	1	.	3
Burglary	.	.	9	5	4	8	.	26
Corrupt Business Influence	1	.	1
Criminal Trespass	1	1
Dealing In Cocaine Or Narcotic Drug	.	8	5	1	.	.	14
Dealing In Methamphetamine	.	2	20	.	.	.	1	.	1	8	.	32
Dealing Possessing Look-Alike Substance	1	.	1
Dealng In a Schedule I, II, or III Controlled Substance	.	1	4	5
Firearm Within 1 Mile School Property Without License	.	.	.	2	2
Handgun Violation (Felony Within 15 Yrs)	1	.	1
Intimidation	1	1
Neglect Of A Dependent	.	.	1	1
Non Support Of Dependent Child	.	.	.	1	1
Operate Vehicle After Suspended For Life	.	.	.	3	3	.	6
Operating Vehicle Intoxicated Resulting in Death	.	.	1	1	.	2
Operating Vehicle While Intoxicated-Previous Conviction	1	2	3
Possession Of A Controlled Substance	1	1
Possession Of Cocaine Or Narcotic Drug	.	1	1
Possession Of Methamphetamine	.	.	1	1	.	2
Possession Of Paraphernalia	1	1
Robbery	.	.	10	2	.	.	.	12
Theft,Receiving Stolen Property	.	.	.	1	1	2	4
Unlawful Firearm Poss By Serious Felon	.	.	2	1	.	.	3
Total	.	12	54	12	4	.	1	4	7	25	6	125

INDIANA DEPARTMENT OF CORRECTION
ADULT OFFENDERS
by Most Serious Offense
for November 2016
snapshot date: 11/01/2016

Edinburgh Correctional Facility												
Most Serious Offense	Murder	FA	FB	FC	FD	F1	F2	F3	F4	F5	F6	Total
Accident Fail To Stop Resulting in Serious Injury or Death	1	.	1
Aiding Inducing/Causing An Offense	.	.	4	1	1	.	6
Arson	.	.	1	1	.	.	2
Assisting A Criminal	.	.	.	1	1
Attempt To Commit Felony	.	1	1	1	1	2	.	6
Auto Theft, Receiving Stolen Auto Parts	.	.	.	1	3	4
Battery	1	2	.	3
Bribery	1	.	1
Burglary	.	.	20	11	16	18	.	65
Conspiracy	.	1	2	.	.	.	1	.	.	1	.	5
Corrupt Business Influence	1	.	1
Criminal Recklessness	1	1
Dealing In Cocaine Or Narcotic Drug	.	12	22	.	.	.	1	.	5	5	.	45
Dealing In Methamphetamine	.	4	34	1	4	6	.	49
Dealing In Schedule IV Controlled Substance	.	.	1	1
Dealing In a Schedule I, II, or III Controlled Substance	.	1	19	1	21
Firearm Within 1 Mile School Property Without License	.	.	.	1	1
Forgery,Counterfeiting,Application Fraud	.	.	.	8	1	9
Fraud On A Financial Institution	1	.	1
Habitual Offender Substance Abuse	1	1
Handgun Violation (Felony Within 15 Yrs)	9	.	9
Insurance Fraud	.	.	.	1	1
Intimidation	1	1
Non Support Of Dependent Child	.	.	.	4	6	10
Operate Vehicle After Suspended For Life	.	.	.	5	11	.	16
Operating Vehicle Intoxicated Resulting in Death	.	.	6	1	.	7
Operating Vehicle While Intoxicated-Previous Conviction	4	1	5
Operating Vehicle-Habit Traffic Violator	1	1
Possess Of Precursors	1	1
Possession Of A Controlled Substance	.	.	.	1	1	2
Possession Of Cocaine Or Narcotic Drug	.	.	.	1	1	.	2
Possession Of Marijuana, Hash, Hash Oil	1	1

INDIANA DEPARTMENT OF CORRECTION
 ADULT OFFENDERS
 by Most Serious Offense
 for November 2016
 snapshot date: 11/01/2016

Edinburgh Correctional Facility												
Most Serious Offense	Murder	FA	FB	FC	FD	F1	F2	F3	F4	F5	F6	Total
Possession Of Methamphetamine	.	1	2	1	2	.	6
Possession Of Syringes Or Needles	1	2	1	4
Possession Or Use Of Legend Drug	1	1
Robbery	.	.	5	3	.	.	.	1	.	5	.	14
Theft,Receiving Stolen Property	6	2	3	11
Trafficking With An Inmate	1	.	1
Unlawful Firearm Poss By Serious Felon	.	.	3	3
Total	.	20	120	39	25	.	2	3	27	73	11	320

INDIANA DEPARTMENT OF CORRECTION
ADULT OFFENDERS
by Most Serious Offense
for November 2016
snapshot date: 11/01/2016

Heritage Trail Correctional Facility												
Most Serious Offense	Murder	FA	FB	FC	FD	F1	F2	F3	F4	F5	F6	Total
Accident Fail To Stop Reulting in Serious Injury or Death	.	.	.	1	1
Aggravated Battery	.	.	2	2	.	.	.	4
Aiding Inducing/Causing An Offense	.	.	1	1	2	1	.	5
Arson	.	.	1	1	.	.	2
Assisting A Criminal	1	.	1
Attempt To Commit Felony	.	.	1	2	.	.	.	4	.	3	.	10
Auto Theft, Receiving Stolen Auto Parts	.	.	.	1	4	5
Battery	.	.	1	15	3	.	.	1	.	61	3	84
Burglary	.	.	61	22	24	21	.	128
Carjacking	.	.	3	3
Carrying Handgun Without License	.	.	.	1	1
Check Fraud	1	1
Conspiracy	.	.	3	3	1	1	.	8
Corrupt Business Influence	.	.	.	1	2	.	3
Criminal Confinement	.	.	.	1	.	.	.	2	.	5	.	8
Criminal Recklessness	.	.	.	3	3	3	.	9
Dealing In Cocaine Or Narcotic Drug	.	2	42	.	.	.	2	5	6	7	.	64
Dealing In Marijuana, Hash, or Hash Oil	1	1
Dealing In Methamphetamine	.	2	32	.	.	.	2	1	2	8	.	47
Dealing In Schedule IV Controlled Substance	.	.	2	1	3
Dealng A Sched I, Ii, Iii Control Subst	1	1	.	.	2
Dealng In a Schedule I, II, or III Controlled Substance	.	.	30	30
Disarming A Law Enforcement Officer	.	.	.	2	2
Domestic Battery	8	3	11
Escape	1	1	2
Failure To Return Lawful Detention/Escape	.	.	.	2	2	4
Forgery,Counterfeiting,Application Fraud	.	.	.	9	1	10
Fraud On A Financial Institution	.	.	.	1	1
Handgun Violation (Felony Within 15 Yrs)	18	.	18
Intimidation	.	.	.	1	7	1	9
Invasion Of Privacy	1	1
Maintaining Common Nuisance	1	1	2
Murder	1	1

INDIANA DEPARTMENT OF CORRECTION
ADULT OFFENDERS
by Most Serious Offense
for November 2016
snapshot date: 11/01/2016

Heritage Trail Correctional Facility												
Most Serious Offense	Murder	FA	FB	FC	FD	F1	F2	F3	F4	F5	F6	Total
Neglect Of A Dependent	.	.	3	1	1	1	.	6
Neglect Of A Dependent Resulting in Serious Injury	1	.	.	.	1
Non Support Of Dependent Child	.	.	.	20	2	22
Operate Vehicle After Suspended For Life	.	.	.	7	15	.	22
Operating Vehicle Intoxicated Resulting in Serious Bodily Injury	.	.	.	1	1	2
Operating Vehicle While Intoxicated-Previous Conviction	4	1	5
Operating Vehicle-Habit Traffic Violator	4	1	5
Opererating Vehicle - Schedule I Or II Control Substance	1	1
Opererating Vehicle While Intoxicated - Endangering Person	1	1
Opererating Vehicle While Intoxicated - Prior Conviction	1	1
Possess Of Precursors	2	2
Possession Of A Controlled Substance	.	.	.	1	2	3
Possession Of Cocaine Or Narcotic Drug	.	.	5	7	3	.	.	.	2	4	2	23
Possession Of Dangerous Device	1	.	.	1
Possession Of Marijuana, Hash, Hash Oil	3	3
Possession Of Methamphetamine	.	.	2	1	1	5	4	13
Possession Of Syringes Or Needles	.	.	.	1	2	1	1	5
Possession Or Use Of Legend Drug	1	1
Reckless Homicide	2	.	2
Residential Entry	1	1
Resisting Law Enforcement	1	2	3
Robbery	.	.	15	9	.	.	.	28	.	15	.	67
Stalking	.	.	.	1	2	.	3
Strangulation	1	1
Theft,Receiving Stolen Property	17	8	25
Trafficking With An Inmate	1	.	1
Unlawful Firearm Poss By Serious Felon	.	.	7	13	.	.	20
Unlawful Transfer of Handgun Ownership	1	.	1
Total	1	4	211	112	68	.	4	49	53	186	34	722

INDIANA DEPARTMENT OF CORRECTION
ADULT OFFENDERS
by Most Serious Offense
for November 2016
snapshot date: 11/01/2016

Indianapolis Re-Entry Facility												
Most Serious Offense	Murder	FA	FB	FC	FD	F1	F2	F3	F4	F5	F6	Total
Aggravated Battery	.	.	4	4
Aiding Inducing/Causing An Offense	.	1	1	2
Arson	.	1	1
Attempt To Commit Felony	.	8	3	1	.	12
Battery	.	.	2	3	5
Burglary	.	4	19	6	3	2	.	34
Conspiracy	.	2	3	1	.	6
Criminal Confinement	.	.	2	2
Criminal Recklessness	.	.	.	1	1
Dealing In Cocaine Or Narcotic Drug	.	24	26	1	.	1	.	52
Dealing In Marijuana, Hash, or Hash Oil	.	.	.	1	1
Dealing In Methamphetamine	.	4	24	3	.	31
Dealng In a Schedule I, II, or III Controlled Substance	.	2	24	26
Firearm Within 1 Mile School Property Without License	.	.	.	1	1
Forgery,Counterfeiting,Application Fraud	.	.	.	3	3
Handgun Violation (Felony Within 15 Yrs)	1	.	1
Home Improvement Fraud Enhancement	.	.	.	1	1
Murder	13	13
Neglect Of Dependent Resulting In Death	.	1	1
Non Support Of Dependent Child	1	.	1
Operate Vehicle After Suspended For Life	.	.	.	1	1	.	2
Operating Vehicle Intoxicated Resulting in Death	.	.	3	1	4
Operating Vehicle Intoxicated Resulting in Serious Bodily Injury	1	.	1
Opererating Vehicle While Intoxicated - Prior Conviction	.	.	.	1	1
Permitting Child To Possess Firearm	.	.	.	1	1
Possession Of Cocaine Or Narcotic Drug	.	1	.	1	2
Possession Of Methamphetamine	.	.	3	3
Reckless Homicide	.	.	.	1	1
Robbery	.	5	22	5	.	.	.	1	.	.	.	33
Theft,Receiving Stolen Property	.	.	.	1	1
Unlawful Firearm Poss By Serious Felon	.	.	11	1	.	.	12
Voluntary Manslaughter	.	11	2	13
Total	13	64	149	28	.	.	.	2	4	12	.	272

INDIANA DEPARTMENT OF CORRECTION
ADULT OFFENDERS
by Most Serious Offense
for November 2016
snapshot date: 11/01/2016

Indiana State Prison												
Most Serious Offense	Murder	FA	FB	FC	FD	F1	F2	F3	F4	F5	F6	Total
Aggravated Battery	.	.	22	5	.	.	.	27
Aiding Inducing/Causing An Offense	.	4	8	1	13
Arson	.	1	1	2
Assisting A Criminal	1	.	1
Attempt To Commit Felony	.	101	15	.	.	8	1	.	.	1	.	126
Auto Theft, Receiving Stolen Auto Parts	.	.	.	1	1
Battery	.	7	5	11	1	8	2	34
Burglary	.	49	84	12	.	3	3	.	3	4	.	158
Carjacking	.	.	1	1
Check Fraud	.	.	.	1	1
Child Molesting	.	228	17	1	.	11	.	1	1	.	.	259
Conspiracy	.	16	3	1	.	.	.	20
Corrupt Business Influence	.	.	.	1	1	.	2
Criminal Confinement	.	.	17	1	.	18
Criminal Deviate Conduct	.	26	5	31
Criminal Recklessness	.	.	.	1	1	2
Dealing In Cocaine Or Narcotic Drug	.	139	51	.	.	.	5	2	2	2	.	201
Dealing In Marijuana, Hash, or Hash Oil	.	.	.	1	1
Dealing In Methamphetamine	.	23	18	.	.	.	1	.	1	2	.	45
Dealng A Sched I, Ii, Iii Control Subst	1	.	.	1
Dealing In a Schedule I, II, or III Controlled Substance	.	5	15	20
Domestic Battery	1	1
Escape	1	.	1
Failure To Appear	1	1
Failure To Register As A Sex Offender	.	.	.	2	2
Failure To Return Lawful Detention/Escape	.	.	2	2	4
Forgery,Counterfeiting,Application Fraud	.	.	.	7	7
Fraud On A Financial Institution	.	.	.	1	1
Handgun Violation (Felony Within 15 Yrs)	1	.	1
Human Sexual Trafficking	.	.	1	1
Incest	.	.	1	1
Intimidation	.	.	.	2	2
Kidnapping	.	19	19

INDIANA DEPARTMENT OF CORRECTION
ADULT OFFENDERS
by Most Serious Offense
for November 2016
snapshot date: 11/01/2016

Indiana State Prison												
Most Serious Offense	Murder	FA	FB	FC	FD	F1	F2	F3	F4	F5	F6	Total
Maintaining Common Nuisance	1	1
Murder	726	726
Neglect Of A Dependent	.	.	4	1	5
Neglect Of Dependent Resulting In Death	.	10	.	.	.	1	11
Operate Vehicle After Suspended For Life	.	.	.	5	5	.	10
Operating Vehicle Intoxicated Resulting in Death	.	.	4	4
Operating Vehicle While Intoxicated-Previous Conviction	2	2
Operating Vehicle-Habit Traffic Violator	1	1
Possess Chemical Reagents Or Precursors	.	.	.	2	2
Possession Of A Controlled Substance	.	.	.	1	2	3
Possession Of Cocaine Or Narcotic Drug	.	12	2	2	16
Possession Of Marijuana, Hash, Hash Oil	1	1
Possession Of Methamphetamine	.	.	1	1	2
Possession Of Paraphernalia	1	1
Prisoner Poss. Dangerous Device/Material	.	.	2	2
Rape	.	67	10	.	.	4	.	2	.	.	.	83
Reckless Homicide	.	.	.	1	1
Resisting Law Enforcement	.	.	3	.	1	4
Robbery	.	46	105	9	.	.	1	9	.	3	.	173
Sexual Misconduct With A Minor	.	1	9	10
Stalking	2	.	2
Theft,Receiving Stolen Property	3	1	4
Unlawful Firearm Poss By Serious Felon	.	.	28	3	.	.	31
Voluntary Manslaughter	.	69	6	.	.	.	1	76
Total	726	823	440	65	11	27	12	20	11	32	9	2,176

INDIANA DEPARTMENT OF CORRECTION
ADULT OFFENDERS
by Most Serious Offense
for November 2016
snapshot date: 11/01/2016

Indiana Women's Prison												
Most Serious Offense	Murder	FA	FB	FC	FD	F1	F2	F3	F4	F5	F6	Total
Aggravated Battery	.	.	4	5	.	.	.	9
Aiding Inducing/Causing An Offense	.	5	2	1	8
Arson	.	1	4	3	.	.	8
Assisting A Criminal	.	.	.	1	1	2
Attempt To Commit Felony	.	13	1	.	1	1	.	16
Auto Theft, Receiving Stolen Auto Parts	.	.	.	1	1	2	4
Battery	.	2	2	3	2	.	.	1	.	22	1	33
Battery By Bodily Waste	1	1
Battery To A Child Causing Death	.	1	1
Burglary	.	2	16	2	10	7	.	37
Check Fraud	.	.	.	1	1
Child Molesting	.	.	2	1	.	.	3
Conspiracy	.	4	5	.	.	.	1	1	.	2	.	13
Controlled Substance Registration	.	.	.	1	1	2
Corrupt Business Influence	.	.	.	1	1
Criminal Confinement	.	.	2	1	1	.	4
Criminal Recklessness	.	.	.	1	1	.	2
Dealing In Cocaine Or Narcotic Drug	.	11	23	.	.	.	4	.	4	5	.	47
Dealing In Methamphetamine	.	16	23	.	.	.	3	3	4	11	.	60
Dealing In Schedule IV Controlled Substance	.	.	2	2	4
Dealing Possessing Look-Alike Substance	.	.	.	1	1
Dealng A Sched I, Ii, Iii Control Subst	1	.	1	.	.	2
Dealng In a Schedule I, II, or III Controlled Substance	.	7	28	1	.	36
Domestic Battery	1	1
Escape	1	1	2
Fail To Return To Accident Resulting in Serious Injury	1	.	.	.	1
Failure To Return Lawful Detention/Escape	.	.	.	1	1	2
Forgery,Counterfeiting,Application Fraud	.	.	.	26	3	29
Fraud	2	1	3
Fraud On A Financial Institution	.	.	.	2	2
Handgun Violation	.	.	.	1	1
Identity Deception	1	1
Intimidation	3	.	3

INDIANA DEPARTMENT OF CORRECTION
ADULT OFFENDERS
by Most Serious Offense
for November 2016
snapshot date: 11/01/2016

Indiana Women's Prison												
Most Serious Offense	Murder	FA	FB	FC	FD	F1	F2	F3	F4	F5	F6	Total
Maintaining Common Nuisance	1	1	2
Murder	70	70
Neglect Of A Dependent	.	.	9	2	1	1	13
Neglect Of A Dependent Resulting In Serious Injury	3	.	.	.	3
Neglect Of Dependent Resulting In Death	.	12	.	.	.	4	16
Operate Vehicle After Suspended For Life	.	.	.	2	2
Operating Vehicle Intoxicated Resulting In Death	.	.	2	1	1	1	.	5
Operating Vehicle Intoxicated Resulting In Serious Bodily Injury	1	.	1
Operating Vehicle While Intoxicated-Previous Conviction	2	2
Opererating Vehicle While Intoxicated - Prior Conviction	1	1
Possess Chemical Reagents Or Precursors	.	.	.	2	2
Possess Of Precursors	1	1
Possession Of A Controlled Substance	.	.	.	3	4	7
Possession Of Cocaine Or Narcotic Drug	.	1	2	2	3	.	8
Possession Of Marijuana, Hash, Hash Oil	1	1
Possession Of Methamphetamine	.	.	4	3	3	.	.	1	.	2	3	16
Possession Of Paraphernalia	1	1
Possession Of Syringes Or Needles	1	.	1
Promoting Prostitution	.	.	.	1	1
Promoting Prostitution Under Age 18	.	.	1	1
Reckless Homicide	.	.	.	2	1	.	3
Resisting Law Enforcement	3	3
Robbery	.	4	19	2	.	.	2	8	.	4	.	39
Sexual Misconduct With A Minor	1	.	1
Theft,Receiving Stolen Property	17	13	30
Trafficking With An Inmate	.	.	.	3	2	.	5
Unlawful Firearm Poss By Serious Felon	.	.	2	2
Violation Of Custody Order	1	1
Voluntary Manslaughter	.	7	1	8
Welfare Fraud	.	.	.	1	1
Total	70	86	154	70	42	4	11	23	24	71	32	587

INDIANA DEPARTMENT OF CORRECTION
ADULT OFFENDERS
by Most Serious Offense
for November 2016
snapshot date: 11/01/2016

Madison Correctional Facility												
Most Serious Offense	Murder	FA	FB	FC	FD	F1	F2	F3	F4	F5	F6	Total
Accident Fail To Stop Resulting in Serious Injury or Death	1	1	.	2
Aiding Inducing/Causing An Offense	.	.	5	1	4	.	10
Arson	1	1	.	.	2
Auto Theft, Receiving Stolen Auto Parts	1	1	2
Battery	4	.	4
Burglary	.	1	22	9	20	5	.	57
Conspiracy	.	3	6	2	.	.	1	2	3	5	.	22
Controlled Substance Registration	.	.	.	1	1
Corrupt Business Influence	.	.	.	4	3	.	7
Dealing In Cocaine Or Narcotic Drug	.	6	40	.	.	.	4	5	13	22	.	90
Dealing In Methamphetamine	.	7	66	.	.	.	2	5	15	20	.	115
Dealing In Schedule IV Controlled Substance	.	.	4	2	6
Dealing Possessing Look-Alike Substance	4	.	4
Dealing A Sched I, II, III Control Subst	3	.	.	3
Dealing In a Schedule I, II, or III Controlled Substance	.	6	43	4	1	54
Domestic Battery	1	1	2
Forgery,Counterfeiting,Application Fraud	.	.	.	24	1	25
Fraud	1	1	2
Fraud On A Financial Institution	.	.	.	3	2	.	5
Identity Deception	1	1
Maintaining Common Nuisance	3	3
Murder	5	5
Neglect Of A Dependent	.	.	2	2	1	5
Neglect Of Dependent Resulting In Death	.	1	1
Non Support Of Dependent Child	.	.	.	1	1
Operate Vehicle After Suspended For Life	.	.	.	2	6	.	8
Operating Vehicle Intoxicated Resulting in Death	.	.	1	1
Operating Vehicle Intoxicated Resulting in Serious Bodily Injury	.	.	.	2	2
Operating Vehicle While Intoxicated-Previous Conviction	1	1	2	4
Operating Vehicle-Habit Traffic Violator	2	2
Possess Chemical Reagents Or Precursors	.	.	.	3	3
Possess Of Precursors	1	1	2
Possession Of A Controlled Substance	.	.	.	3	8	11

INDIANA DEPARTMENT OF CORRECTION
 ADULT OFFENDERS
 by Most Serious Offense
 for November 2016
 snapshot date: 11/01/2016

Madison Correctional Facility												
Most Serious Offense	Murder	FA	FB	FC	FD	F1	F2	F3	F4	F5	F6	Total
Possession Of Cocaine Or Narcotic Drug	.	2	2	.	3	.	.	.	2	6	3	18
Possession Of Marijuana, Hash, Hash Oil	1	1
Possession Of Methamphetamine	.	.	5	2	1	.	.	1	1	1	1	12
Possession Of Syringes Or Needles	1	3	4
Possession Or Use Of Legend Drug	1	1	2
Prostitution	1	1
Robbery	.	1	5	2	.	.	.	2	.	4	.	14
Theft,Receiving Stolen Property	11	9	20
Trafficking With An Inmate	.	.	.	2	5	.	7
Unlawful Firearm Poss By Serious Felon	.	.	1	1
Voluntary Manslaughter	.	3	3
Welfare Fraud	.	.	.	3	3
Total	5	30	202	68	36	.	7	16	59	97	28	548

INDIANA DEPARTMENT OF CORRECTION
ADULT OFFENDERS
by Most Serious Offense
for November 2016
snapshot date: 11/01/2016

Miami Correctional Facility												
Most Serious Offense	Murder	FA	FB	FC	FD	F1	F2	F3	F4	F5	F6	Total
Accident Fail To Stop Resulting in Serious Injury or Death	.	.	3	1	.	4
Aggravated Battery	.	.	79	30	.	.	.	109
Aiding Inducing/Causing An Offense	.	9	18	1	.	.	4	3	2	.	.	37
Arson	.	3	10	3	.	.	16
Assisting A Criminal	.	.	.	1	1	2
Attempt To Commit Felony	.	97	25	4	.	17	.	5	.	2	.	150
Auto Theft, Receiving Stolen Auto Parts	.	.	.	4	1	5
Battery	.	4	16	25	3	.	.	2	.	23	2	75
Battery To A Child Causing Death	.	2	2
Burglary	.	55	290	49	.	1	12	.	30	13	.	450
Carjacking	.	.	13	13
Carrying Handgun Without License	.	.	.	5	5
Causing Suicide	.	.	1	1
Check Fraud	1	1
Child Molesting	.	105	26	2	.	31	.	5	1	.	.	170
Conspiracy	.	27	17	1	.	1	5	1	1	1	.	54
Controlled Substance Registration	.	.	.	1	1
Corrupt Business Influence	.	.	.	4	1	.	5
Criminal Confinement	.	.	34	3	1	.	.	11	.	2	.	51
Criminal Deviate Conduct	.	6	3	9
Criminal Recklessness	.	.	.	3	1	5	.	9
Deal Sub Represented To Be Controlled Sub	1	1
Deal Substance Represented To Be Controlled Substance	1	1
Dealing In Cocaine Or Narcotic Drug	.	291	118	.	.	.	26	4	3	10	.	452
Dealing In Marijuana, Hash, or Hash Oil	.	.	.	1	1	.	2
Dealing In Methamphetamine	.	71	100	.	.	.	19	6	11	17	.	224
Dealing In Schedule IV Controlled Substance	.	.	1	3	4
Dealing Possessing Look-Alike Substance	.	.	.	1	1
Dealng A Sched I, Ii, Iii Control Subst	1	1
Dealng In a Schedule I, II, or III Controlled Substance	.	26	52	1	.	79
Domestic Battery	2	2	4
Escape	4	3	7
Fail To Stop After Accident - Operating Vehicle Intoxicated	.	.	1	1

INDIANA DEPARTMENT OF CORRECTION
ADULT OFFENDERS
by Most Serious Offense
for November 2016
snapshot date: 11/01/2016

Miami Correctional Facility												
Most Serious Offense	Murder	FA	FB	FC	FD	F1	F2	F3	F4	F5	F6	Total
Failure To Register As A Sex Offender	2	.	2
Failure To Return Lawful Detention/Escape	.	.	3	10	1	14
Firearm Within 1 Mile School Property Without License	.	.	.	1	1
Forgery,Counterfeiting,Application Fraud	.	.	.	24	24
Fraud On A Financial Institution	.	.	.	1	2	.	3
Handgun Violation (Felony Within 15 Yrs)	.	.	.	1	16	.	17
Identity Deception	1	1	2
Incest	.	.	2	2
Intimidation	.	.	.	3	1	.	4
Kidnapping	.	9	3	1	.	.	.	13
Maintaining Common Nuisance	1	1
Murder	184	184
Neglect Of A Dependent	.	.	8	8
Neglect Of A Dependent Resulting in Serious Injury	5	.	.	.	5
Neglect Of Dependent Resulting In Death	.	7	.	.	.	1	8
Non Support Of Dependent Child	.	.	.	4	2	6
Obliterating Handgun I.D.	.	.	.	1	1
Obstruction Of Justice	1	1	2
Operate Vehicle After Suspended For Life	.	.	.	5	15	.	20
Operating Vehicle Intoxicated Resulting in Death	.	.	7	1	1	2	.	11
Operating Vehicle Intoxicated Resulting in Serious Bodily Injury	.	.	.	1	1	2
Operating Vehicle While Intoxicated-Previous Conviction	3	3
Operating Vehicle-Habit Traffic Violator	2	2	4
Opererating Vehicle While Intoxicated - Endangering Person	1	1
Possess Chemical Reagents Or Precursors	.	.	.	2	2
Possess Methamphetamine Without Pay Tax	1	1
Possess Of Precursors	1	1
Possession Of A Controlled Substance	.	.	.	6	1	7
Possession Of Cocaine Or Narcotic Drug	.	20	18	5	4	.	.	1	1	2	2	53
Possession Of Dangerous Device	2	.	.	2
Possession Of Marijuana, Hash, Hash Oil	2	2
Possession Of Methamphetamine	.	3	10	2	2	.	.	.	1	1	2	21
Possession Of Syringes Or Needles	1	.	1

INDIANA DEPARTMENT OF CORRECTION
ADULT OFFENDERS
by Most Serious Offense
for November 2016
snapshot date: 11/01/2016

Miami Correctional Facility												
Most Serious Offense	Murder	FA	FB	FC	FD	F1	F2	F3	F4	F5	F6	Total
Prisoner Poss. Dangerous Device/Material	.	.	2	2
Rape	.	14	4	.	.	8	.	2	.	.	.	28
Reckless Homicide	.	.	.	1	1	.	2
Residential Entry	1	1	2
Resisting Law Enforcement	.	.	2	1	1	1	2	7
Robbery	.	48	272	29	.	.	12	60	.	6	.	427
Sexual Misconduct With A Minor	.	1	6	1	.	.	8
Stalking	.	.	2	3	1	.	6
Strangulation	1	1	2
Theft,Receiving Stolen Property	12	9	21
Trafficking With An Inmate	.	.	.	1	2	.	3
Unlawful Firearm Poss By Serious Felon	.	.	96	13	.	.	109
Voluntary Manslaughter	.	77	9	.	.	.	7	93
Total	184	875	1,248	210	43	59	89	136	70	134	36	3,084

INDIANA DEPARTMENT OF CORRECTION
ADULT OFFENDERS
by Most Serious Offense
for November 2016
snapshot date: 11/01/2016

New Castle Correctional Facility												
Most Serious Offense	Murder	FA	FB	FC	FD	F1	F2	F3	F4	F5	F6	Total
Accident Fail To Stop Resulting in Serious Injury or Death	1	.	1
Aggravated Battery	.	.	17	2	.	.	.	19
Aiding Inducing/Causing An Offense	.	1	3	1	1	4	.	10
Aiding in Manufacture of Sch II Controlled Substance	1	1
Arson	.	.	7	1	.	.	8
Attempt To Commit Felony	.	51	32	1	.	.	.	6	3	5	.	98
Auto Theft, Receiving Stolen Auto Parts	.	.	.	4	2	6
Battery	.	2	5	12	1	.	.	1	.	14	1	36
Battery By Bodily Waste	1	1
Burglary	.	25	100	27	.	.	1	1	20	13	.	187
Carjacking	.	.	4	4
Carrying Handgun Without License	.	.	.	1	1
Child Exploitation	.	.	.	12	1	8	.	21
Child Molesting	.	564	407	182	.	2	.	38	67	.	.	1,260
Child Seduction	.	.	.	3	1	3	.	7
Child Solicitation	.	.	.	12	4	.	.	.	5	18	.	39
Conspiracy	.	5	8	3	16
Corrupt Business Influence	.	.	.	1	1	.	2
Criminal Confinement	.	.	17	6	.	.	.	2	.	5	.	30
Criminal Deviate Conduct	.	44	86	130
Criminal Recklessness	.	.	.	2	2	.	4
Dangerous Control Of A Handgun	1	.	1
Dealing In Cocaine Or Narcotic Drug	.	17	30	1	4	22	.	74
Dealing In Marijuana, Hash, or Hash Oil	1	1	2
Dealing In Methamphetamine	.	3	40	.	.	.	1	.	4	14	.	62
Dealing In Sched Iv Controlled Substance	1	.	.	1
Dealing In Sched V Controlled Substance	1	.	1
Dealing In Schedule IV Controlled Substance	.	.	1	2	3
Dealing In a Schedule I, II, or III Controlled Substance	.	6	34	2	.	42
Disarming A Law Enforcement Officer	2	.	2
Distribute Destructive Device To Minor	.	.	1	1
Domestic Battery	1	1

INDIANA DEPARTMENT OF CORRECTION
ADULT OFFENDERS
by Most Serious Offense
for November 2016
snapshot date: 11/01/2016

New Castle Correctional Facility												
Most Serious Offense	Murder	FA	FB	FC	FD	F1	F2	F3	F4	F5	F6	Total
Escape	1	1	2
Fail To Return To Accident Resulting in Serious Injury	1	.	.	.	1
Failure To Register As A Sex Offender	.	.	.	11	4	21	1	37
Failure To Return Lawful Detention/Escape	.	.	.	1	1	2
Firearm Within 1 Mile School Property Without License	.	.	.	1	1
Forgery,Counterfeiting,Application Fraud	.	.	.	10	10
Fraud On A Financial Institution	.	.	.	1	2	.	3
Handgun Violation (Felony Within 15 Yrs)	.	.	.	1	9	.	10
Human Sexual Trafficking	2	1	.	.	3
Incest	.	.	18	17	1	4	.	40
Intimidation	.	.	.	3	1	.	4
Invasion Of Privacy	1	1
Kidnapping	.	11	11
Maintaining Common Nuisance	1	1
Murder	92	92
Neglect Of A Dependent	.	.	.	2	1	1	.	4
Neglect Of Dependent Resulting In Death	.	1	1
Non Support Of Dependent Child	.	.	.	4	3	7
Obstruction Of Justice	1	1
Operate Vehicle After Suspended For Life	.	.	.	6	8	.	14
Operating Vehicle Intoxicated Resulting in Death	.	.	4	4
Operating Vehicle Intoxicated Resulting in Serious Bodily Injury	1	.	1
Operating Vehicle While Intoxicated-Previous Conviction	6	6
Operating Vehicle-Habit Traffic Violator	2	1	3
Opererating Vehicle While Intoxicated - Endangering Person	1	1
Opererating Vehicle While Intoxicated - Prior Conviction	2	2
Possess Chemical Reagents Or Precursors	.	.	.	2	2
Possess Of Precursors	1	1
Possession Of A Controlled Substance	.	.	.	3	1	4
Possession Of Child Pornography	5	5
Possession Of Cocaine Or Narcotic Drug	.	1	6	.	1	1	1	10
Possession Of Dangerous Device	1	.	.	1

INDIANA DEPARTMENT OF CORRECTION
ADULT OFFENDERS
by Most Serious Offense
for November 2016
snapshot date: 11/01/2016

New Castle Correctional Facility												
Most Serious Offense	Murder	FA	FB	FC	FD	F1	F2	F3	F4	F5	F6	Total
Possession Of Methamphetamine	.	.	3	1	4	.	.	.	1	1	.	10
Possession Of Syringes Or Needles	.	.	.	1	1	.	2
Prisoner Poss. Dangerous Device/Material	.	.	2	2
Promoting Prostitution Under Age 18	.	.	4	4
Public Indecency	2	2
Rape	.	89	118	24	.	.	.	231
Residential Entry	2	1	3
Robbery	.	17	83	8	.	.	.	5	.	11	.	124
Sexual Battery	7	.	.	.	3	.	5	15
Sexual Misconduct Gov Employee W/Detainee	.	.	.	1	1
Sexual Misconduct With A Minor	.	.	226	57	2	.	.	.	37	28	.	350
Stalking	1	.	1
Strangulation	1	1
Theft,Receiving Stolen Property	.	.	.	1	10	4	15
Trafficking With An Inmate	.	.	.	1	1	.	2
Unlawful Firearm Poss By Serious Felon	.	.	16	3	.	.	19
Vicarious Sexual Gratification	.	.	3	3	1	.	.	7
Voluntary Manslaughter	.	8	2	10
Voyeurism	2	2
Total	92	845	1,277	404	60	2	2	83	154	208	30	3,157

INDIANA DEPARTMENT OF CORRECTION
ADULT OFFENDERS
by Most Serious Offense
for November 2016
snapshot date: 11/01/2016

Pendleton Correctional Facility												
Most Serious Offense	Murder	FA	FB	FC	FD	F1	F2	F3	F4	F5	F6	Total
Aggravated Battery	.	.	19	2	.	.	.	21
Aiding Inducing/Causing An Offense	.	5	5	.	.	1	11
Arson	.	4	3	1	.	.	8
Attempt To Commit Felony	.	81	10	1	.	4	96
Auto Theft, Receiving Stolen Auto Parts	.	.	.	2	2	2	6
Battery	.	3	3	21	1	.	2	.	.	5	1	36
Battery To A Child Causing Death	.	2	2
Burglary	.	40	87	17	.	3	1	.	8	6	.	162
Carjacking	.	.	6	6
Check Fraud	.	.	.	1	1
Child Molesting	.	210	9	4	.	7	.	1	.	.	.	231
Conspiracy	.	8	4	1	13
Criminal Confinement	.	.	18	1	.	.	.	2	.	2	.	23
Criminal Deviate Conduct	.	33	3	36
Criminal Recklessness	.	.	.	1	1	.	2
Dealing In Cocaine Or Narcotic Drug	.	86	28	.	.	.	1	.	1	3	.	119
Dealing In Marijuana, Hash, or Hash Oil	1	.	1
Dealing In Methamphetamine	.	11	23	.	.	.	1	1	1	3	.	40
Dealing In a Schedule I, II, or III Controlled Substance	.	5	4	9
Escape	1	.	1
Failure To Register As A Sex Offender	1	.	1
Failure To Return Lawful Detention/Escape	.	.	.	2	2
Firearm Within 1 Mile School Property Without License	.	.	.	1	1
Forgery,Counterfeiting,Application Fraud	.	.	.	9	9
Fraud On A Financial Institution	.	.	.	1	1
Habitual Offender Substance Abuse	1	1
Handgun Violation (Felony Within 15 Yrs)	.	.	.	1	4	.	5
Incest	.	.	1	1	.	.	2
Intimidation	.	.	.	2	2
Kidnapping	.	12	12
Murder	515	515
Neglect Of A Dependent	.	.	1	1	2

INDIANA DEPARTMENT OF CORRECTION
ADULT OFFENDERS
by Most Serious Offense
for November 2016
snapshot date: 11/01/2016

Pendleton Correctional Facility												
Most Serious Offense	Murder	FA	FB	FC	FD	F1	F2	F3	F4	F5	F6	Total
Neglect Of Dependent Resulting In Death	.	4	4
Obliterating Handgun I.D.	.	.	.	1	1
Operate Vehicle After Suspended For Life	.	.	.	3	6	.	9
Operating Vehicle Intoxicated Resulting in Death	.	.	1	1	.	.	2
Operating Vehicle While Intoxicated-Previous Conviction	2	1	3
Operating Vehicle-Habit Traffic Violator	1	1
Opererating Vehicle While Intoxicated - Prior Conviction	1	1
Possession Of Cocaine Or Narcotic Drug	.	4	1	.	3	1	9
Possession Of Methamphetamine	.	.	2	.	1	.	.	1	.	2	1	7
Possession Or Use Of Legend Drug	1	1
Prisoner Poss. Dangerous Device/Material	.	.	1	1
Rape	.	46	8	.	.	3	.	1	.	.	.	58
Reckless Homicide	.	.	.	2	2
Residential Entry	1	1
Resisting Law Enforcement	.	.	1	1	.	2
Robbery	.	34	89	5	.	.	3	8	.	2	.	141
Sexual Misconduct With A Minor	.	.	8	1	9
Stalking	1	.	.	1
Theft,Receiving Stolen Property	4	4	8
Unlawful Firearm Poss By Serious Felon	.	.	25	2	.	.	27
Voluntary Manslaughter	.	33	6	.	.	.	3	42
Total	515	621	366	78	17	18	11	16	16	38	11	1,707

INDIANA DEPARTMENT OF CORRECTION
ADULT OFFENDERS
by Most Serious Offense
for November 2016
snapshot date: 11/01/2016

Plainfield Correctional Facility												
Most Serious Offense	Murder	FA	FB	FC	FD	F1	F2	F3	F4	F5	F6	Total
Accident Fail To Stop Resulting in Serious Injury or Death	2	.	2
Aggravated Battery	.	.	15	12	.	.	.	27
Aiding Inducing/Causing An Offense	.	2	6	1	2	3	.	14
Aiding in Manufacture of Sch II Controlled Substance	1	1
Animal Fighting Contest	1	1
Arson	.	.	7	3	.	.	10
Assisting A Criminal	.	.	.	2	2
Attempt To Commit Felony	.	19	11	2	.	.	.	2	.	3	.	37
Auto Theft, Receiving Stolen Auto Parts	.	.	.	4	2	9	15
Battery	.	.	3	28	.	.	.	1	1	30	3	66
Battery By Bodily Waste	1	1
Battery To A Child Causing Death	.	1	1
Burglary	.	9	127	34	.	.	4	.	52	30	.	256
Carjacking	.	.	6	6
Carrying Handgun Without License	.	.	.	4	4
Check Fraud	.	.	.	1	1
Child Molesting	.	8	2	1	1	.	.	12
Conspiracy	.	11	11	2	.	.	.	1	2	3	.	30
Corrupt Business Influence	.	.	.	4	1	.	5
Criminal Confinement	.	.	8	6	3	.	.	2	.	4	.	23
Criminal Deviate Conduct	.	.	1	1
Criminal Recklessness	.	.	.	3	1	3	.	7
Deal Sub Represented To Be Controlled Sub	1	1
Deal Substance Represented To Be Controlled Substance	1	1
Dealing In A Schedule V Controlled Substance	.	.	1	1
Dealing In Cocaine Or Narcotic Drug	.	43	104	.	.	.	6	3	17	12	.	185
Dealing In Marijuana, Hash, or Hash Oil	.	.	.	1	1	2	1	5
Dealing In Methamphetamine	.	2	65	5	14	17	.	103
Dealing In Schedule IV Controlled Substance	.	.	3	2	.	5
Dealing Possessing Look-Alike Substance	1	.	1
Dealng A Sched I, Ii, Iii Control Subst	1	1	2	.	.	4
Dealng In a Schedule I, II, or III Controlled Substance	.	3	54	57
Disarming A Law Enforcement Officer	1	.	1

INDIANA DEPARTMENT OF CORRECTION
ADULT OFFENDERS
by Most Serious Offense
for November 2016
snapshot date: 11/01/2016

Plainfield Correctional Facility												
Most Serious Offense	Murder	FA	FB	FC	FD	F1	F2	F3	F4	F5	F6	Total
Domestic Battery	2	1	3
Driving While Intoxicated	1	1
Escape	6	4	10
Fail To Stop After Accident - Operating Vehicle Intoxicated	.	.	1	1
Failure To Register As A Sex Offender	.	.	.	8	1	14	.	23
Failure To Return Lawful Detention/Escape	.	.	.	3	3	6
Firearm Within 1 Mile School Property Without License	.	.	.	1	1
Forgery,Counterfeiting,Application Fraud	.	.	.	16	1	1	18
Fraud On A Financial Institution	.	.	.	3	9	.	12
Handgun Violation (Felony Within 15 Yrs)	20	.	20
Home Improvement Fraud Offenses	1	1
Intimidation	.	.	.	5	4	7	2	18
Kidnapping	.	2	1	.	.	.	3
Maintaining Common Nuisance	1	1
Murder	39	39
Neglect Of A Dependent	.	.	1	1	2	.	4
Neglect Of A Dependent Resulting in Serious Injury	3	.	.	.	3
Non Support Of Dependent Child	.	.	.	15	2	1	.	18
Obliterating Handgun I.D.	.	.	.	1	1
Operate Vehicle After Suspended For Life	.	.	.	19	23	.	42
Operating Vehicle Intoxicated Resulting in Death	.	.	4	4	.	.	8
Operating Vehicle Intoxicated Resulting in Serious Bodily Injury	1	2	.	3
Operating Vehicle While Intoxicated-Previous Conviction	7	4	11
Operating Vehicle With Schedule I in Body - Causing Death	.	.	.	1	1
Operating Vehicle-Habit Traffic Violator	.	.	.	1	4	1	6
Opererating Vehicle - Schedule I Or II Control Substance	1	1
Opererating Vehicle While Intoxicated - Endangering Person	1	1
Opererating Vehicle While Intoxicated - Prior Conviction	1	1
Possess Chemical Reagents Or Precursors	.	.	.	1	1	.	2
Possess Of Precursors	2	1	3
Possession Of A Controlled Substance	.	.	.	3	4	7
Possession Of Cocaine Or Narcotic Drug	.	3	16	7	2	.	.	.	1	5	6	40
Possession Of Dangerous Device	1	.	1

INDIANA DEPARTMENT OF CORRECTION
ADULT OFFENDERS
by Most Serious Offense
for November 2016
snapshot date: 11/01/2016

Plainfield Correctional Facility												
Most Serious Offense	Murder	FA	FB	FC	FD	F1	F2	F3	F4	F5	F6	Total
Possession Of Marijuana, Hash, Hash Oil	2	2
Possession Of Methamphetamine	.	.	2	5	3	.	.	6	6	4	3	29
Possession Of Syringes Or Needles	1	1	2
Prisoner Poss. Dangerous Device/Material	.	.	.	1	1
Rape	.	2	2
Reckless Homicide	.	.	.	3	2	.	5
Residential Entry	1	1
Resisting Law Enforcement	.	.	.	1	3	4	8
Robbery	.	5	79	21	.	.	.	29	.	19	.	153
Sale Of Unregistered Security	.	.	.	1	1
Stalking	.	.	.	3	1	2	.	6
Strangulation	1	3	4
Theft,Receiving Stolen Property	18	2	14	34
Trafficking With An Inmate	.	.	.	1	1	.	2
Unlawful Firearm Poss By Serious Felon	.	.	31	13	.	.	44
Voluntary Manslaughter	.	10	3	13
Total	39	120	561	214	76	.	11	66	119	235	62	1,503

INDIANA DEPARTMENT OF CORRECTION
ADULT OFFENDERS
by Most Serious Offense
for November 2016
snapshot date: 11/01/2016

Putnamville Correctional Facility													
Most Serious Offense	Murder	FA	FB	FC	FD	F1	F2	F3	F4	F5	F6	HO	Total
Accident Fail To Stop Reulting in Serious Injury or Death	1	.	.	1
Aggravated Battery	.	.	19	13	32
Aiding Inducing/Causing An Offense	.	1	5	1	2	2	.	.	11
Arson	.	1	9	6	.	.	.	16
Assisting A Criminal	.	.	.	1	1
Assisting Suicide	.	.	.	1	1
Attempt To Commit Felony	.	24	10	3	1	.	1	1	.	4	1	.	45
Auto Theft, Receiving Stolen Auto Parts	.	.	.	6	3	1	10	.	20
Battery	.	.	3	31	1	.	.	4	.	61	3	.	103
Battery By Bodily Waste	.	.	.	1	1	2
Bribery	1	.	.	1
Burglary	.	13	183	56	.	.	4	4	72	38	.	.	370
Carjacking	.	.	7	7
Carrying Handgun Without License	.	.	.	4	4
Check Fraud	.	.	.	3	3
Child Molesting	.	2	4	6	12
Conspiracy	.	5	15	2	.	.	1	.	.	2	.	.	25
Controlled Substance Registration	1	1
Conversion	2	.	.	2
Corrupt Business Influence	6	.	.	6
Criminal Confinement	.	.	22	7	2	.	.	7	.	8	.	.	46
Criminal Recklessness	.	.	.	1	7	.	.	8
Deal Sub Represented To Be Controled Sub	1	.	1
Dealing In Cocaine Or Narcotic Drug	.	40	140	.	.	.	12	11	17	8	.	.	228
Dealing In Marijuana, Hash, or Hash Oil	.	.	.	3	1	3	1	.	8
Dealing In Methamphetamine	.	4	89	.	.	.	11	16	12	14	.	.	146
Dealing In Schedule IV Controlled Substance	.	.	2	2	4
Dealing Possessing Look-Alike Substance	.	.	.	1	3	.	.	4
Dealng A Sched I, Ii, Iii Control Subst	1	1	2
Dealing In a Schedule I, II, or III Controlled Substance	.	5	33	38
Disarming A Law Enforcement Officer	1	.	.	1
Domestic Battery	2	2	.	4
Escape	1	6	6	.	13
Fail To Return To Accident Resulting in Serious Injury	1	1
Failure To Register As A Sex Offender	.	.	.	7	1	24	1	.	33

INDIANA DEPARTMENT OF CORRECTION
ADULT OFFENDERS
by Most Serious Offense
for November 2016
snapshot date: 11/01/2016

Putnamville Correctional Facility													
Most Serious Offense	Murder	FA	FB	FC	FD	F1	F2	F3	F4	F5	F6	HO	Total
Failure To Return Lawful Detention/Escape	.	.	.	6	1	7
Firearm Within 1 Mile School Property Without License	.	.	.	9	9
Forgery,Counterfeiting,Application Fraud	.	.	.	35	2	.	37
Fraud	1	1	.	2
Fraud On A Financial Institution	.	.	.	2	7	.	.	9
Habitual Offender Substance Abuse	1	1
Handgun Violation	.	.	.	1	1
Handgun Violation (Felony Within 15 Yrs)	.	.	.	3	14	.	.	17
Identity Deception	.	.	.	1	1
Illegal Possession Of Firearm By Felon	.	.	.	1	1
Intimidation	.	.	.	4	1	6	1	.	12
Involuntary Manslaughter	.	.	.	1	1
Kidnapping	.	4	4
Maintaining Common Nuisance	3	3	.	6
Murder	29	29
Neglect Of A Dependent	.	.	3	1	1	1	.	6
Neglect Of A Dependent Resulting in Serious Injury	2	2
Neglect Of Dependent Resulting In Death	.	1	1
Non Support Of Dependent Child	.	.	.	7	3	10
Obliterating Handgun I.D.	1	.	.	1
Obstruction Of Justice	1	.	1
Operate Vehicle After Suspended For Life	.	.	.	23	33	.	.	56
Operating Vehicle Intoxicated Resulting in Death	.	.	4	2	3	4	.	.	13
Operating Vehicle Intoxicated Resulting in Serious Bodily Injury	.	.	.	2	2	1	.	5
Operating Vehicle While Intoxicated-Previous Conviction	2	2
Operating Vehicle-Habit Traffic Violator	2	1	.	3
Opererating Vehicle While Intoxicated - Endangering Person	2	2
Opererating Vehicle While Intoxicated - Prior Conviction	5	.	5
Possess Chemical Reagents Or Precursors	.	.	.	1	1	.	.	2
Possess Of Precursors	1	.	1
Possession Of A Controlled Substance	.	.	.	3	3	1	.	7
Possession Of Cocaine Or Narcotic Drug	.	1	9	7	2	.	.	4	5	3	3	.	34
Possession Of Dangerous Device	1	.	.	.	1
Possession Of Marijuana, Hash, Hash Oil	2	2
Possession Of Methamphetamine	.	.	8	4	3	.	.	3	2	7	3	.	30

INDIANA DEPARTMENT OF CORRECTION
ADULT OFFENDERS
by Most Serious Offense
for November 2016
snapshot date: 11/01/2016

Putnamville Correctional Facility													
Most Serious Offense	Murder	FA	FB	FC	FD	F1	F2	F3	F4	F5	F6	HO	Total
Possession Of Paraphernalia	1	1
Possession Of Syringes Or Needles	3	1	.	.	4
Possession Or Use Of Legend Drug	.	.	.	1	1
Prisoner Poss. Dangerous Device/Material	.	.	.	1	1
Rape	.	1	2	3
Reckless Homicide	.	.	.	2	1	.	.	3
Residential Entry	5	.	5
Resisting Law Enforcement	1	3	4	.	8
Robbery	.	4	113	21	.	.	4	75	.	29	.	.	246
Sale Of Unregistered Security	.	.	.	1	1
Sexual Misconduct With A Minor	.	.	1	2	.	.	.	3
Stalking	.	.	.	3	2	2	.	.	7
Strangulation	3	3	.	6
Theft,Receiving Stolen Property	19	1	20	.	40
Trafficking With An Inmate	.	.	.	2	2
Unlawful Firearm Poss By Serious Felon	.	.	75	29	.	.	.	104
Voluntary Manslaughter	.	17	3	.	.	.	4	24
Total	29	123	759	280	65	.	38	142	154	308	81	1	1,980

INDIANA DEPARTMENT OF CORRECTION
ADULT OFFENDERS
by Most Serious Offense
for November 2016
snapshot date: 11/01/2016

Reception Diagnostic Center												
Most Serious Offense	Murder	FA	FB	FC	FD	F1	F2	F3	F4	F5	F6	Total
Aggravated Battery	.	.	5	.	.	1	.	1	.	.	.	7
Aiding Inducing/Causing An Offense	.	.	1	5	.	6
Arson	.	.	1	3	.	.	4
Assisting A Criminal	1	.	1
Attempt To Commit Felony	1	.	1	.	.	.	2
Auto Theft, Receiving Stolen Auto Parts	1	4	5
Battery	.	.	.	1	1	11	.	13
Burglary	.	.	21	8	20	8	.	57
Carjacking	.	.	1	1
Carrying Handgun Without License	.	.	.	2	2
Child Molesting	.	7	6	3	.	2	.	1	3	.	.	22
Child Seduction	1	1
Child Solicitation	1	.	1
Conspiracy	.	.	1	.	.	.	1	.	1	1	.	4
Corrupt Business Influence	.	.	.	3	3
Criminal Confinement	.	.	2	2	.	4
Criminal Deviate Conduct	.	1	1	2
Criminal Recklessness	.	.	.	1	2	1	.	4
Criminal Trespass	1	1
Dealing In Cocaine Or Narcotic Drug	.	3	14	.	.	.	2	2	4	11	.	36
Dealing In Marijuana, Hash, or Hash Oil	1	1	.	2
Dealing In Methamphetamine	.	1	6	.	.	.	9	2	9	10	.	37
Dealing In Schedule IV Controlled Substance	.	.	.	1	1
Dealing Possessing Look-Alike Substance	.	.	.	1	1	.	2
Dealing In a Schedule I, II, or III Controlled Substance	.	.	7	7
Disarming A Law Enforcement Officer	1	.	.	.	1
Domestic Battery	1	1	2
Escape	2	2	4
Failure To Register As A Sex Offender	.	.	.	2	2	6	.	10
Failure To Return Lawful Detention/Escape	1	1
Forgery,Counterfeiting,Application Fraud	.	.	.	4	1	5
Fraud On A Financial Institution	2	.	2
Handgun Violation (Felony Within 15 Yrs)	7	.	7
Identity Deception	1	1
Intimidation	.	.	.	2	1	2	5

INDIANA DEPARTMENT OF CORRECTION
ADULT OFFENDERS
by Most Serious Offense
for November 2016
snapshot date: 11/01/2016

Reception Diagnostic Center												
Most Serious Offense	Murder	FA	FB	FC	FD	F1	F2	F3	F4	F5	F6	Total
Murder	10	10
Neglect Of A Dependent	.	.	.	1	1
Neglect Of A Dependent Resulting in Serious Injury	1	.	.	.	1
Neglect Of Dependent Resulting In Death	1	1
Non Support Of Dependent Child	.	.	.	1	2	3
Obliterating Handgun I.D.	1	.	1
Operate Vehicle After Suspended For Life	13	.	13
Operating Vehicle Intoxicated Resulting in Death	.	.	1	1
Operating Vehicle While Intoxicated-Previous Conviction	2	1	3
Operating Vehicle-Habit Traffic Violator	1	1
Opererating Vehicle - Schedule I Or II Control Substance	1	1
Opererating Vehicle While Intoxicated - Endangering Person	1	1
Opererating Vehicle While Intoxicated - Prior Conviction	2	2
Possess Chemical Reagents Or Precursors	.	.	.	1	1
Possess Of Precursors	1	1
Possession Of A Controlled Substance	2	2
Possession Of Cocaine Or Narcotic Drug	.	.	2	2	4	8
Possession Of Methamphetamine	.	.	.	1	2	.	.	1	1	3	2	10
Possession Of Syringes Or Needles	1	1	2
Rape	1	.	.	.	1
Reckless Homicide	.	.	.	2	1	.	3
Resisting Law Enforcement	3	2	5
Robbery	.	.	10	1	.	.	3	9	.	6	.	29
Security Fraud	.	.	2	2
Sexual Misconduct With A Minor	.	.	3	2	1	3	.	9
Stalking	2	.	2
Strangulation	1	1
Theft,Receiving Stolen Property	13	1	6	20
Trafficking With An Inmate	.	.	.	1	1
Unlawful Firearm Poss By Serious Felon	.	.	3	8	.	.	11
Voluntary Manslaughter	.	1	1	2
Total	10	13	87	40	38	5	16	20	50	101	32	412

INDIANA DEPARTMENT OF CORRECTION
ADULT OFFENDERS
by Most Serious Offense
for November 2016
snapshot date: 11/01/2016

Rockville Correctional Facility													
Most Serious Offense	Murder	FA	FB	FC	FD	F1	F2	F3	F4	F5	F6	HO	Total
Accident Fail To Stop Reulting in Serious Injury or Death	1	.	.	1
Aggravated Battery	.	.	8	3	11
Aiding Inducing/Causing An Offense	.	4	5	1	1	1	.	.	12
Arson	.	1	2	1	1	.	.	.	5
Assisting A Criminal	.	.	.	1	1
Attempt To Commit Felony	.	10	4	.	.	1	2	.	.	2	.	.	19
Auto Theft, Receiving Stolen Auto Parts	1	1	.	2
Battery	.	1	.	8	.	.	1	3	.	16	2	.	31
Battery By Bodily Waste	.	.	.	1	1	2
Burglary	.	3	47	5	.	1	1	1	19	10	.	.	87
Carjacking	.	.	2	2
Check Fraud	.	.	.	1	1
Child Molesting	.	25	11	3	.	1	.	2	42
Child Solicitation	1	.	.	1
Conspiracy	.	10	8	1	.	.	.	4	2	1	.	.	26
Controlled Substance Registration	.	.	.	2	2	4
Corrupt Business Influence	.	.	.	5	2	.	.	7
Criminal Confinement	.	.	2	2	4
Criminal Deviate Conduct	.	4	1	5
Criminal Recklessness	1	1	.	.	2
Dangerous Control Of A Handgun	1	.	.	1
Dealing In A Schedule V Controlled Substance	.	.	1	1
Dealing In Cocaine Or Narcotic Drug	.	27	45	.	.	.	5	5	9	19	.	.	110
Dealing In Methamphetamine	.	21	53	.	.	.	8	11	13	21	.	.	127
Dealing In Schedule IV Controlled Substance	.	.	2	5	3	.	.	10
Dealing Possessing Look-Alike Substance	.	.	.	1	1
Dealng A Sched I, Ii, Iii Control Subst	2	.	4	.	.	.	6
Dealng In a Schedule I, II, or III Controlled Substance	.	13	46	59
Domestic Battery	1	1	.	2
Escape	6	5	.	11
Fail To Return To Accident Resulting in Serious Injury	1	1
Fail To Stop At An Accident/Sbi/Prior	1	1
Failure To Register As A Sex Offender	.	.	.	2	1	1	.	4
Failure To Return Lawful Detention/Escape	.	.	.	3	2	5

INDIANA DEPARTMENT OF CORRECTION
ADULT OFFENDERS
by Most Serious Offense
for November 2016
snapshot date: 11/01/2016

Rockville Correctional Facility													
Most Serious Offense	Murder	FA	FB	FC	FD	F1	F2	F3	F4	F5	F6	HO	Total
Forgery,Counterfeiting,Application Fraud	.	.	.	34	1	1	.	36
Fraud	1	2	.	3
Fraud On A Financial Institution	.	.	.	1	5	.	.	6
Habitual Offender	1	1
Handgun Violation (Felony Within 15 Yrs)	2	.	.	2
Human Sexual Trafficking	.	.	1	1
Identity Deception	1	1	.	2
Incest	.	.	1	1
Intimidation	2	1	.	3
Kidnapping	1	.	1	.	.	2
Maintaining Common Nuisance	4	2	.	6
Murder	48	48
Neglect Of A Dependent	.	.	12	4	3	1	.	.	20
Neglect Of A Dependent Resulting in Serious Injury	11	11
Neglect Of Dependent Resulting In Death	.	14	14
Operate Vehicle After Suspended For Life	.	.	.	3	7	.	.	10
Operating Vehicle Intoxicated Resulting in Death	.	.	5	5	.	.	.	10
Operating Vehicle Intoxicated Resulting in Serious Bodily Injury	1	.	.	1
Operating Vehicle While Intoxicated-Previous Conviction	5	1	1	.	7
Operating Vehicle-Habit Traffic Violator	2	1	.	3
Opererating Vehicle While Intoxicated - Endangering Person	2	2
Possess Chemical Reagents Or Precursors	1	.	.	1
Possess Of Precursors	2	3	.	5
Possession Of A Controlled Substance	.	.	.	1	7	8
Possession Of Cocaine Or Narcotic Drug	.	1	6	4	2	.	.	2	1	5	2	.	23
Possession Of Methamphetamine	.	1	5	2	9	.	.	3	.	4	2	.	26
Possession Of Paraphernalia	1	1
Possession Of Syringes Or Needles	1	2	1	.	4
Promoting Prostitution	.	.	.	1	1
Promoting Prostitution Under Age 18	.	.	1	1
Prostitution	1	.	1
Rape	1	1
Reckless Homicide	.	.	.	2	1	.	.	3
Residential Entry	1	2	.	3

INDIANA DEPARTMENT OF CORRECTION
 ADULT OFFENDERS
 by Most Serious Offense
 for November 2016
 snapshot date: 11/01/2016

Rockville Correctional Facility													
Most Serious Offense	Murder	FA	FB	FC	FD	F1	F2	F3	F4	F5	F6	HO	Total
Resisting Law Enforcement	1	1
Robbery	.	5	17	3	.	.	1	17	.	8	.	.	51
Sexual Misconduct With A Minor	.	.	9	2	1	.	.	12
Stalking	.	.	.	1	1
Strangulation	1	1
Theft,Receiving Stolen Property	.	.	.	1	19	18	.	38
Trafficking With An Inmate	.	.	.	2	2	.	.	4
Unlawful Firearm Poss By Serious Felon	.	.	3	3
Voluntary Manslaughter	.	12	3	.	.	.	1	16
Welfare Fraud	.	.	.	3	1	4
Total	48	152	300	101	73	3	21	68	57	130	48	1	1,002

INDIANA DEPARTMENT OF CORRECTION
ADULT OFFENDERS
by Most Serious Offense
for November 2016
snapshot date: 11/01/2016

South Bend Community Re-Entry Center												
Most Serious Offense	Murder	FA	FB	FC	FD	F1	F2	F3	F4	F5	F6	Total
Aggravated Battery	.	.	1	1
Aiding Inducing/Causing An Offense	.	.	1	1
Attempt To Commit Felony	.	3	3	6
Battery	.	.	.	1	1	.	2
Burglary	.	2	11	2	1	.	.	16
Carjacking	.	.	1	1
Carrying Handgun Without License	.	.	.	1	1
Conspiracy	.	.	2	2
Criminal Confinement	.	.	1	1
Dealing In Cocaine Or Narcotic Drug	.	4	11	15
Dealing In Marijuana, Hash, or Hash Oil	.	.	.	1	1
Dealing In Methamphetamine	.	1	19	1	3	.	24
Dealing Possessing Look-Alike Substance	1	.	1
Dealing In a Schedule I, II, or III Controlled Substance	.	1	7	1	.	9
Firearm Within 1 Mile School Property Without License	.	.	.	1	1
Forgery,Counterfeiting,Application Fraud	.	.	.	4	4
Fraud	1	1
Intimidation	.	.	.	1	1	1	.	3
Invasion Of Privacy	1	1
Murder	2	2
Neglect Of A Dependent	.	.	.	1	1
Non Support Of Dependent Child	.	.	.	1	1	2
Operate Vehicle After Suspended For Life	.	.	.	2	3	.	5
Operating Vehicle Intoxicated Resulting in Death	.	.	2	2
Operating Vehicle Intoxicated Resulting in Serious Bodily Injury	1	1
Operating Vehicle While Intoxicated-Previous Conviction	3	1	4
Operating Vehicle-Habit Traffic Violator	1	1
Opererating Vehicle While Intoxicated - Endangering Person	2	2
Possession Of A Controlled Substance	.	.	.	1	1
Possession Of Cocaine Or Narcotic Drug	.	3	1	.	1	5
Residential Entry	1	1
Resisting Law Enforcement	.	.	.	1	1
Robbery	.	1	6	2	.	.	.	1	.	.	.	10
Theft,Receiving Stolen Property	1	1
Unlawful Firearm Poss By Serious Felon	.	.	2	2
Voluntary Manslaughter	.	5	5
Total	2	20	68	19	11	.	.	1	2	10	4	137

INDIANA DEPARTMENT OF CORRECTION
ADULT OFFENDERS
by Most Serious Offense
for November 2016
snapshot date: 11/01/2016

Wabash Valley Correctional Facility													
Most Serious Offense	Murder	FA	FB	FC	FD	F1	F2	F3	F4	F5	F6	HO	Total
Aggravated Battery	.	.	18	.	.	2	.	6	26
Aiding Inducing/Causing An Offense	.	12	3	.	.	1	.	.	.	1	.	.	17
Arson	.	2	5	1	.	.	.	8
Assisting A Criminal	1	.	1
Attempt To Commit Felony	.	103	16	1	.	6	.	.	.	1	.	.	127
Auto Theft, Receiving Stolen Auto Parts	.	.	.	1	1	.	2
Battery	.	4	2	12	1	13	1	.	33
Burglary	.	41	83	15	.	3	1	.	18	11	.	.	172
Carjacking	.	.	9	9
Carrying Handgun Without License	.	.	.	1	1
Check Fraud	1	1
Child Molesting	.	248	19	5	.	13	285
Conspiracy	.	8	9	1	.	1	1	20
Criminal Confinement	.	.	15	2	17
Criminal Deviate Conduct	.	24	2	26
Criminal Recklessness	.	.	.	3	1	1	.	.	5
Dealing In Cocaine Or Narcotic Drug	.	63	36	2	.	1	.	.	102
Dealing In Marijuana, Hash, or Hash Oil	.	.	.	2	2
Dealing In Methamphetamine	.	23	39	.	.	.	3	2	3	9	.	.	79
Dealing In Schedule IV Controlled Substance	.	.	1	1
Dealng A Sched I, Ii, Iii Control Subst	1	1
Dealng In a Schedule I, II, or III Controlled Substance	.	6	12	1	.	.	19
Escape	1	2	.	3
Failure To Register As A Sex Offender	5	.	.	5
Failure To Return Lawful Detention/Escape	.	.	2	2	4
Firearm Within 1 Mile School Property Without License	.	.	.	1	1
Forgery,Counterfeiting,Application Fraud	.	.	.	4	4
Habitual Offender Substance Abuse	1	1
Handgun Violation (Felony Within 15 Yrs)	.	.	.	2	4	.	.	6
Home Improvement Fraud Enhancement	.	.	.	1	1
Intimidation	3	.	.	3
Kidnapping	.	22	22
Maintaining Common Nuisance	1	.	1
Murder	575	575

INDIANA DEPARTMENT OF CORRECTION
ADULT OFFENDERS
by Most Serious Offense
for November 2016
snapshot date: 11/01/2016

Wabash Valley Correctional Facility													
Most Serious Offense	Murder	FA	FB	FC	FD	F1	F2	F3	F4	F5	F6	HO	Total
Neglect Of A Dependent Resulting in Serious Injury	2	2
Neglect Of Dependent Resulting In Death	.	12	12
Non Support Of Dependent Child	.	.	.	1	1	.	.	2
Operate Vehicle After Suspended For Life	.	.	.	5	7	.	.	12
Operating Vehicle Intoxicated Resulting in Death	.	.	5	1	1	.	.	.	7
Operating Vehicle While Intoxicated-Previous Conviction	2	1	.	3
Operating Vehicle-Habit Traffic Violator	1	1	.	2
Opererating Vehicle While Intoxicated - Prior Conviction	1	.	1
Possess Chemical Reagents Or Precursors	.	.	.	1	1
Possess Of Precursors	1	1
Possession Of Cocaine Or Narcotic Drug	.	3	2	.	1	1	.	.	7
Possession Of Marijuana, Hash, Hash Oil	1	1
Possession Of Methamphetamine	.	1	3	.	1	4	1	.	10
Possession Of Paraphernalia	1	1
Prisoner Poss. Dangerous Device/Material	.	.	3	3
Rape	.	53	7	.	.	7	.	1	68
Reckless Homicide	.	.	.	1	1
Removing, Damaging, Or Altering a VIN	.	.	.	1	1
Resisting Law Enforcement	.	.	1	.	1	.	.	1	3
Robbery	.	49	99	6	.	.	1	8	.	2	.	.	165
Sexual Misconduct With A Minor	.	1	8	9
Stalking	1	.	.	1
Strangulation	1	.	1
Theft,Receiving Stolen Property	.	.	.	2	5	3	.	10
Unlawful Firearm Poss By Serious Felon	.	.	21	4	.	.	.	25
Voluntary Manslaughter	.	36	2	.	.	.	1	39
Total	575	711	422	71	17	33	8	22	27	67	14	1	1,968

INDIANA DEPARTMENT OF CORRECTION
ADULT OFFENDERS
by Most Serious Offense
for November 2016
snapshot date: 11/01/2016

Westville Correctional Facility													
Most Serious Offense	Murder	FA	FB	FC	FD	F1	F2	F3	F4	F5	F6	HO	Total
Accident Fail To Stop Reulting in Serious Injury or Death	3	.	.	3
Aggravated Battery	.	.	31	11	42
Aiding Inducing/Causing An Offense	.	2	15	2	.	.	.	10	6	13	.	.	48
Arson	.	1	11	6	.	.	.	18
Assisting A Criminal	.	.	.	1	1
Attempt To Commit Felony	.	19	18	7	.	.	.	1	3	10	1	.	59
Auto Theft, Receiving Stolen Auto Parts	.	.	.	2	5	10	.	17
Battery	.	.	8	38	3	.	.	4	.	76	4	.	133
Battery By Bodily Waste	.	.	.	1	2	3
Battery To A Child Causing Death	.	1	1
Burglary	.	9	201	76	.	.	4	2	97	77	.	.	466
Carjacking	.	.	3	3
Carrying Handgun Without License	.	.	.	9	9
Child Molesting	.	2	2	2	6
Conspiracy	.	6	13	1	1	.	2	1	3	4	.	.	31
Controlled Substance Registration	1	1
Corrupt Business Influence	.	.	.	10	8	.	.	18
Criminal Confinement	.	.	16	9	2	.	1	4	.	10	2	.	44
Criminal Deviate Conduct	.	2	2	4
Criminal Recklessness	.	.	.	3	3	4	1	.	11
Dangerous Possession Of A Handgun	.	.	.	1	1
Dealing In Cocaine Or Narcotic Drug	.	69	205	1	.	.	5	18	28	47	.	.	373
Dealing In Marijuana, Hash, or Hash Oil	.	.	.	2	3	.	.	5
Dealing In Methamphetamine	.	18	134	.	.	.	4	12	45	81	.	.	294
Dealing In Sched Iv Controlled Substance	1	1
Dealing In Schedule IV Controlled Substance	.	.	1	3	4
Dealing Possessing Look-Alike Substance	.	.	.	2	2	1	.	5
Dealng A Sched I, Ii, Iii Control Subst	3	.	.	.	3
Dealng In a Schedule I, II, or III Controlled Substance	.	9	78	4	.	.	91
Disarming A Law Enforcement Officer	.	.	.	2	2	.	.	4
Domestic Battery	8	8	.	16
Escape	10	13	.	23
Fail To Return To Accident Resulting in Serious Injury	2	2
Fail To Stop After Accident - Operating Vehicle Intoxicated	.	.	3	3
Failure Of Sex Offender To Possess Id	1	1

INDIANA DEPARTMENT OF CORRECTION
ADULT OFFENDERS
by Most Serious Offense
for November 2016
snapshot date: 11/01/2016

Westville Correctional Facility													
Most Serious Offense	Murder	FA	FB	FC	FD	F1	F2	F3	F4	F5	F6	HO	Total
Failure To Register As A Sex Offender	.	.	.	11	20	3	.	34
Failure To Return Lawful Detention/Escape	.	.	3	7	2	12
Firearm Within 1 Mile School Property Without License	.	.	.	6	6
Forgery,Counterfeiting,Application Fraud	.	.	.	36	2	3	.	41
Fraud	2	2	.	4
Fraud On A Financial Institution	.	.	.	10	10	.	.	20
Habitual Offender	1	1
Handgun Violation (Felony Within 15 Yrs)	.	.	.	7	43	.	.	50
Home Improvement Fraud Enhancement	.	.	.	1	1
Home Improvement Fraud Offenses	1	1
Illegal Possession Of Firearm By Felon	.	.	.	1	1
Intimidation	.	.	.	5	6	14	4	.	29
Invasion Of Privacy	1	2	.	3
Involuntary Manslaughter	.	.	.	2	2
Kidnapping	.	1	1	2
Maintaining Common Nuisance	1	1	.	2
Mischief	.	.	.	1	1
Murder	47	47
Neglect Of A Dependent	.	.	7	2	1	3	.	.	13
Neglect Of A Dependent Resulting in Serious Injury	6	6
Non Support Of Dependent Child	.	.	.	15	2	17
Obliterating Handgun I.D.	1	.	.	1
Obstruction Of Justice	1	1	.	2
Operate Vehicle After Suspended For Life	.	.	.	28	56	.	.	84
Operating Vehicle Intoxicated Resulting in Death	.	.	3	3	5	5	.	.	16
Operating Vehicle Intoxicated Resulting in Serious Bodily Injury	.	.	.	1	1	1	.	3
Operating Vehicle While Intoxicated-Previous Conviction	15	9	.	24
Operating Vehicle-Habit Traffic Violator	.	.	.	1	6	2	.	9
Opererating Vehicle While Intoxicated - Endangering Person	1	1
Opererating Vehicle While Intoxicated - Prior Conviction	5	.	5
Pointing A Firearm	1	1
Possess Chemical Reagents Or Precursors	.	.	.	1	3	.	.	4
Possess Of Precursors	2	2	.	4
Possession Of A Controlled Substance	.	.	.	7	8	15
Possession Of Cocaine Or Narcotic Drug	.	9	16	11	4	.	.	2	6	11	13	.	72

INDIANA DEPARTMENT OF CORRECTION
ADULT OFFENDERS
by Most Serious Offense
for November 2016
snapshot date: 11/01/2016

Westville Correctional Facility													
Most Serious Offense	Murder	FA	FB	FC	FD	F1	F2	F3	F4	F5	F6	HO	Total
Possession Of Marijuana, Hash, Hash Oil	6	6
Possession Of Methamphetamine	.	1	12	6	10	14	10	.	53
Possession Of Paraphernalia	1	1
Possession Of Syringes Or Needles	3	4	.	7
Possession Or Use Of Legend Drug	1	1	.	2
Prisoner Poss. Dangerous Device/Material	.	.	.	1	1
Rape	.	4	4
Reckless Homicide	.	.	.	4	5	.	.	9
Residential Entry	5	.	5
Resisting Law Enforcement	6	1	6	.	13
Robbery	.	18	138	28	.	.	3	63	.	30	.	.	280
Security Fraud	.	.	.	1	1
Sexual Misconduct With A Minor	.	.	1	1	2
Stalking	.	.	1	1	1	4	.	.	7
Strangulation	4	1	.	5
Theft,Receiving Stolen Property	34	31	.	65
Trafficking With An Inmate	.	.	.	1	4	.	.	5
Unlawful Firearm Poss By Serious Felon	.	.	50	25	.	.	.	75
Voluntary Manslaughter	.	24	7	31
Welfare Fraud	1	1
Total	47	195	979	371	148	.	19	138	228	579	146	1	2,851