

Indiana Department of Correction
January 2017

Offender Population Report

Prepared for the Justice Reinvestment Advisory Council
and State Budget Committee



TABLE OF CONTENTS

DOC Monthly Admissions - Adult Offenders	1
Current Adult Offenders, by County of Commit	4
Population Trend Graphs	6
DOC Adult Offenders – Facility Breakdowns, by highest Felony Classification	8
DOC Adult Offenders – Most Serious Offense, Alphabetical by highest Felony Classification	10
DOC Adult Offenders – Most Serious Offense, Ranked by highest Felony Classification	14
Appendix – DOC Facilities – Felony Breakdowns	18



INDIANA DEPARTMENT OF CORRECTION

for January 2017

December 2016 Admissions

by Most Serious Offense

Most Serious Offense	Murder	FA	FB	FC	FD	F1	F2	F3	F4	F5	F6	Total
Accident Fail To Stop Resulting in Serious Injury or Death	2	.	2
Aggravated Battery	.	.	2	2	.	.	.	4
Aiding Inducing/Causing An Offense	.	.	.	1	.	.	.	1	.	3	.	5
Arson	.	.	2	1	.	.	3
Assisting A Criminal	.	.	.	2	1	3
Attempt To Commit Felony	.	1	3	.	1	2	.	2	.	2	.	11
Auto Theft, Receiving Stolen Auto Parts	2	4	6
Battery	.	.	2	14	.	.	1	1	.	35	2	55
Bribery	.	.	.	2	2
Burglary	.	2	46	23	.	.	1	.	33	23	.	128
Carjacking	.	.	3	3
Carrying Handgun Without License	.	.	.	2	2
Child Exploitation	.	.	.	1	1	.	2
Child Molesting	.	9	7	14	.	5	.	3	6	.	.	44
Child Solicitation	.	.	1	1	.	.	2
Conspiracy	.	4	.	1	.	.	3	.	.	4	.	12
Corrupt Business Influence	3	.	3
Criminal Confinement	.	.	6	2	.	.	.	5	.	2	1	16
Criminal Deviate Conduct	.	.	4	4
Criminal Recklessness	.	.	.	2	1	1	.	4
Deal Sub Represented To Be Controlled Sub	1	1
Dealing In Cocaine Or Narcotic Drug	.	9	39	1	.	.	6	3	8	11	.	77
Dealing In Marijuana, Hash, or Hash Oil	.	.	.	1	1	.	2
Dealing In Methamphetamine	.	.	19	.	.	.	7	7	12	13	.	58
Dealing In Schedule IV Controlled Substance	.	.	1	1	2
Dealing In a Schedule I, II, or III Controlled Substance	.	1	9	1	.	11
Dealing Possessing Look-Alike Substance	3	.	3
Domestic Battery	4	2	6
Domestic Battery With Previous Battery Conviction	1	.	1
Driving While Intoxicated Result - Death	.	.	.	1	1
Escape	2	11	13
Fail To Stop At An Accident/Sbi/Prior	2	.	.	.	2
Failure To Register As A Sex Offender	.	.	.	1	9	2	12
Failure To Return Lawful Detention/Escape	.	.	.	1	2	3
Firearm Within 1 Mile School Property Without License	.	.	.	3	3
Forgery,Counterfeiting,Application Fraud	.	.	.	14	2	5	21

Note: 5 current admissions have missing sentencing data due to processing or safekeepers.

INDIANA DEPARTMENT OF CORRECTION

for January 2017

December 2016 Admissions

by Most Serious Offense

Most Serious Offense	Murder	FA	FB	FC	FD	F1	F2	F3	F4	F5	F6	Total
Fraud	2	2
Fraud On A Financial Institution	.	.	.	3	3	.	6
Handgun Violation (Felony Within 15 Yrs)	14	.	14
Human Sexual Trafficking	.	.	1	1
Incest	.	.	.	1	1
Intimidation	.	.	.	2	1	6	1	10
Involuntary Manslaughter	1	.	1
Kidnapping	1	1
Maintaining Common Nuisance	2	2
Murder	7	7
Neglect Of A Dependent	.	.	1	3	1	2	.	7
Neglect Of A Dependent Resulting in Serious Injury	1	.	.	.	1
Neglect Of Dependent Resulting In Death	.	1	1
Non Support Of Dependent Child	.	.	.	9	4	13
OPER VEH .15 OR MORE - PRIOR CONVICTION	1	.	1
Obliterating Handgun I.D.	1	.	1
Obstruction Of Justice	1	1
Operate Vehicle After Suspended For Life	.	.	.	9	17	.	26
Operating Vehicle Intoxicated Resulting in Death	.	.	1	3	1	.	5
Operating Vehicle While Intoxicated-Previous Conviction	8	2	10
Operating Vehicle-Habit Traffic Violator	2	1	3
Possess Of Precursors	1	1
Possession Of A Controlled Substance	5	5
Possession Of Cocaine Or Narcotic Drug	.	.	2	5	3	.	.	2	4	6	8	30
Possession Of Methamphetamine	.	.	3	1	2	.	.	1	1	3	6	17
Possession Of Paraphernalia	1	1
Possession Of Syringes Or Needles	2	5	2	9
Rape	.	.	2	.	.	1	.	3	.	.	.	6
Residential Entry	3	2	5
Resisting Law Enforcement	2	2	4
Robbery	.	1	22	5	.	.	3	21	.	7	.	59
Sexual Misconduct With A Minor	.	.	7	3	3	4	.	17
Stalking	1	.	1
Strangulation	2	1	3
Theft,Receiving Stolen Property	32	1	10	43
Trafficking With An Inmate	.	.	.	1	1	.	2

INDIANA DEPARTMENT OF CORRECTION
for January 2017
December 2016 Admissions
by Most Serious Offense

Most Serious Offense	Murder	FA	FB	FC	FD	F1	F2	F3	F4	F5	F6	Total
Unlawful Firearm Poss By Serious Felon	.	.	10	15	.	.	25
Voluntary Manslaughter	4	4
	7	28	193	129	83	8	26	54	87	191	67	873

INDIANA DEPARTMENT OF CORRECTION
ADULT OFFENDERS
by County of Commitment
for January 2017
snapshot date: 01/01/2017

County of Commit	Department of Correction	**Community Corrections Programs	Local Jail Holds		COUNTY TOTALS
			DOC Contract	Felony Level 6 Diversions	
Adams	148	107	0	0	255
Allen	1,463	740	30	93	2,326
Bartholomew	259	306	3	30	598
Benton*	19	0	0	4	23
Blackford	68	91	7	8	174
Boone	134	66	3	13	216
Brown	38	21	2	0	61
Carroll	45	67	1	7	120
Cass	179	101	3	2	285
Clark	238	90	0	3	331
Clay	58	156	6	3	223
Clinton	141	50	4	22	217
Crawford	31	47	1	0	79
Daviess	85	235	2	5	327
Dearborn	368	140	6	35	549
Decatur	119	335	1	9	464
DeKalb	126	135	1	18	280
Delaware	399	802	9	6	1,216
Dubois	88	205	2	4	299
Elkhart	1,552	385	29	42	2,008
Fayette	187	140	4	10	341
Floyd	206	122	3	41	372
Fountain	35	66	0	2	103
Franklin*	82	0	0	0	82
Fulton	90	20	3	8	121
Gibson	104	34	2	26	166
Grant	402	146	3	30	581
Greene	120	68	0	0	188
Hamilton	323	253	2	84	662
Hancock	142	227	2	57	428
Harrison	110	64	0	2	176
Hendricks	217	135	8	63	423
Henry	238	97	0	9	344
Howard	298	482	8	36	824
Huntington	308	42	3	54	407
Jackson	201	90	6	19	316
Jasper	71	87	0	3	161
Jay	207	17	4	17	245
Jefferson	214	305	4	15	538
Jennings	128	22	3	19	172
Johnson	318	295	7	28	648

*Counties that are not participating in Community Corrections

** Community Corrections data as of 12/27/16

INDIANA DEPARTMENT OF CORRECTION
ADULT OFFENDERS
by County of Commitment
for January 2017
snapshot date: 01/01/2017

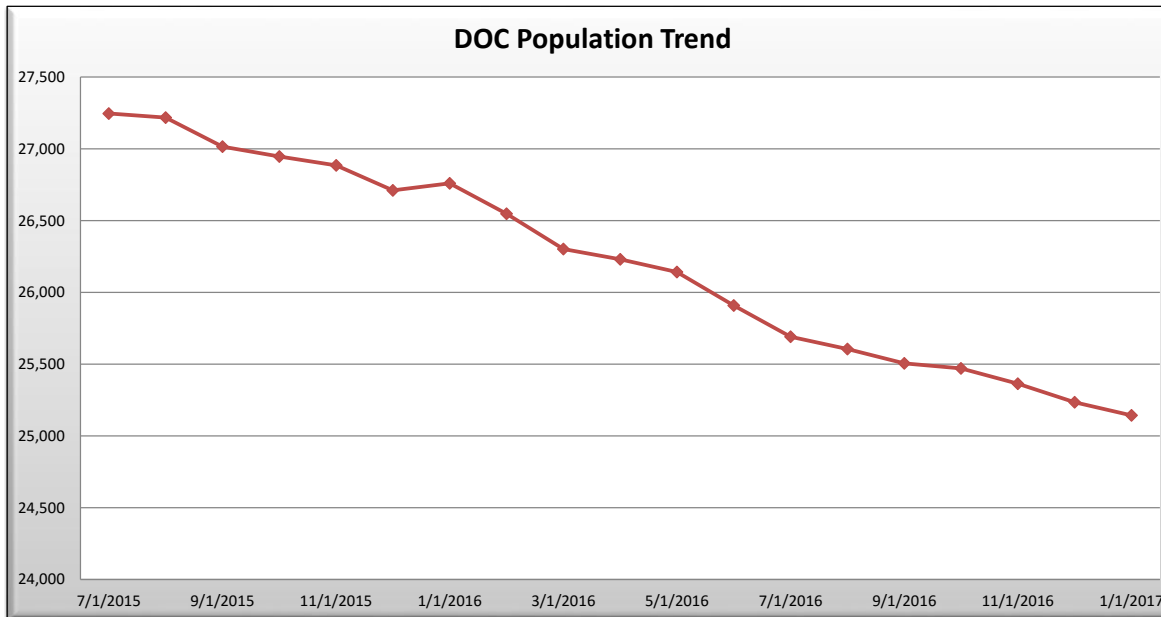
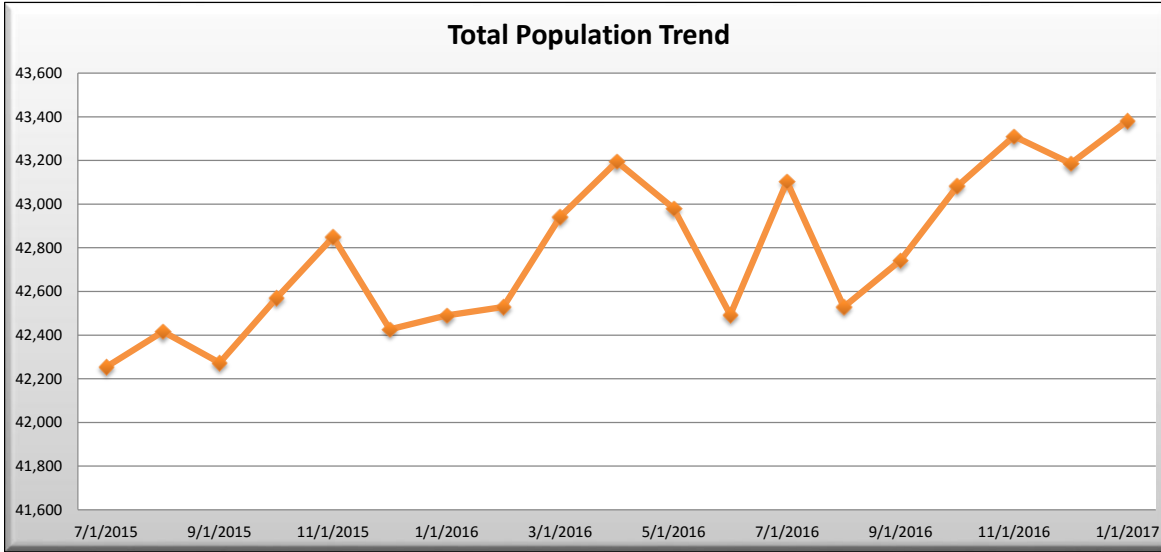
County of Commit	Department of Correction	**Community Corrections Programs	Local Jail Holds		COUNTY TOTALS
			DOC Contract	Felony Level 6 Diversions	
Knox	48	187	1	0	236
Kosciusko	220	34	4	16	274
LaGrange	62	83	0	7	152
Lake	1,148	259	21	32	1,460
LaPorte	386	180	10	4	580
Lawrence	167	243	6	10	426
Madison	1,090	322	8	19	1,439
Marion	5,284	2,921	18	142	8,365
Marshall	127	60	4	19	210
Martin	48	73	13	0	134
Miami	71	36	12	0	119
Monroe	318	464	2	0	784
Montgomery	175	69	0	14	258
Morgan	199	119	6	47	371
Newton*	50	0	1	5	56
Noble	124	519	2	10	655
Ohio	43	13	0	0	56
Orange	49	135	0	0	184
Owen	39	173	1	0	213
Parke	38	11	0	9	58
Perry	53	51	0	3	107
Pike	68	69	2	0	139
Porter	266	131	0	8	405
Posey	95	33	0	13	141
Pulaski	31	10	0	4	45
Putnam	86	49	7	16	158
Randolph	54	53	0	0	107
Ripley	106	63	7	31	207
Rush	80	41	0	7	128
St Joseph	1,034	234	32	70	1,370
Scott	154	111	6	8	279
Shelby	302	158	8	26	494
Spencer	32	96	1	1	130
Starke	98	67	2	9	176
Steuben	114	127	1	14	256
Sullivan	45	24	2	6	77
Switzerland	24	12	1	0	37
Tippecanoe	758	489	10	34	1,291
Tipton	11	7	0	0	18
Union	27	16	0	0	43
Vanderburgh	825	414	12	92	1,343
Vermillion	64	69	4	7	144
Vigo	422	468	5	0	895
Wabash	179	50	1	0	230
Warren	15	22	0	13	50
Warrick	58	23	1	3	85
Washington	117	146	2	8	273
Wayne	459	72	12	28	571
Wells	142	73	1	17	233
White	73	80	0	0	153
Whitley	92	282	5	25	404
Missing	14	0	0	0	14
TOTALS	25,143	16,232	403	1,604	43,382
			2,007		

*Counties that are not participating in Community Corrections

** Community Corrections data as of 12/27/16

INDIANA DEPARTMENT OF CORRECTION
 ADULT OFFENDERS
 Population Trend Summary
 for January 2017
 snapshot date: 01/01/2017

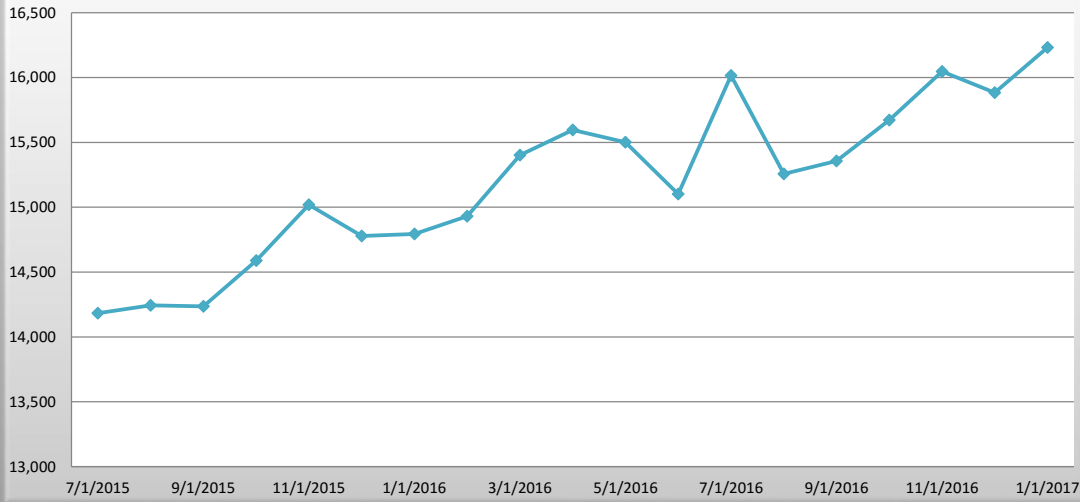
Date	DOC Adult	Community Corrections	Jail DOC Contract	Jail Felony Level 6 Diversions	Total
7/1/2016	25,691	16,016	302	1,094	43,103
8/1/2016	25,605	15,257	319	1,348	42,529
9/1/2016	25,506	15,357	361	1,518	42,742
10/3/2016	25,471	15,672	365	1,574	43,082
11/1/2016	25,364	16,047	363	1,537	43,311
12/1/2016	25,235	15,883	370	1,698	43,186
1/1/2017	↓ 25,143	↑ 16,232	↑ 403	↓ 1,604	↑ 43,382



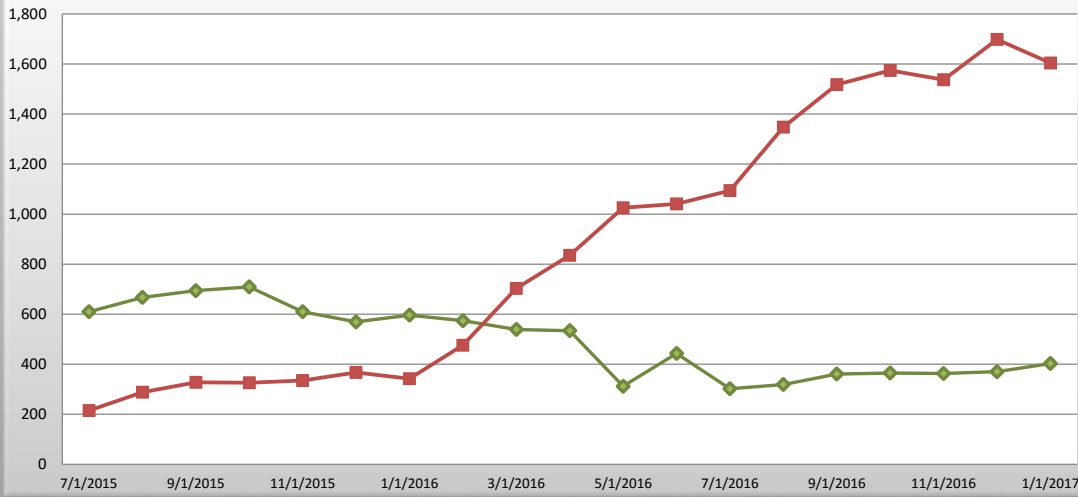
INDIANA DEPARTMENT OF CORRECTION
ADULT OFFENDERS
Population Trend Summary
for January 2017
snapshot date: 01/01/2017

Date	DOC Adult	Community Corrections	Jail DOC Contract	Jail Felony Level 6 Diversions	Total
7/1/2016	25,691	16,016	302	1,094	43,103
8/1/2016	25,605	15,257	319	1,348	42,529
9/1/2016	25,506	15,357	361	1,518	42,742
10/3/2016	25,471	15,672	365	1,574	43,082
11/1/2016	25,364	16,047	363	1,537	43,311
12/1/2016	25,235	15,883	370	1,698	43,186
1/1/2017	↓ 25,143	↑ 16,232	↑ 403	↓ 1,604	↑ 43,382

Community Correction Population Trend



Jail Population Trend



INDIANA DEPARTMENT OF CORRECTION
by highest felony classification
for January 2017
snapshot date: 01/01/2017

Minimum Security - Adult MALE															
Facility Name	Beds	Offenders	% Capacity	Murder	FA	FB	FC	FD	F1	F2	F3	F4	F5	F6	HO
Chain O'Lakes	129	123	95.3%	.	11	45	14	5	.	1	5	10	26	6	.
Edinburgh	344	304	88.4%	.	22	113	31	26	.	2	4	26	69	11	.
Miami - MCA	204	193	94.6%	7	40	64	21	8	.	.	1	9	36	7	.
New Castle - NCA	204	186	91.2%	.	4	58	20	17	.	1	2	16	62	6	.
Pendleton - IRO	220	207	94.1%	19	35	73	20	15	.	.	2	9	31	3	.
Westville - WCA	379	345	91.0%	.	13	91	35	13	.	1	3	36	124	29	.
Wabash Valley - WVA	198	147	74.2%	.	9	62	16	5	.	.	1	12	35	7	.
Indianapolis Re-Entry	420	231	55.0%	12	59	122	23	.	.	.	3	4	8	.	.
Sub-Total	2,098	1,736	82.7%	38	193	628	180	89	0	5	21	122	391	69	0

Re-Entry & Work Release - Adult MALE															
Facility Name	Beds	Offenders	% Capacity	Murder	FA	FB	FC	FD	F1	F2	F3	F4	F5	F6	HO
Bartholomew Co. Re-Entry	8	8	100.0%	.	1	5	2
Chain O'Lakes Re-Entry	7	4	57.1%	.	1	1	2	.	.
Clark Co. Re-Entry	0	0	100.0%
Duval Center Re-Entry	11	11	100.0%	1	1	4	4	1
Elkhart Co. Re-Entry	0	0	100.0%
Lake Co. Re-Entry	5	5	100.0%	.	2	3
South Bend Re-Entry	172	127	73.8%	3	16	60	15	6	.	.	1	5	17	4	.
VOA/Hope Hall Re-Entry	17	16	94.1%	.	2	8	.	2	4	.	.
Starke Co. PI - TC	27	27	100.0%	.	.	3	1	1	.	.	.	9	10	3	.
Sub-Total	247	198	80.2%	4	23	84	22	10	0	0	1	14	33	7	0

Medium Security - Adult MALE															
Facility Name	Beds	Offenders	% Capacity	Murder	FA	FB	FC	FD	F1	F2	F3	F4	F5	F6	HO
Branchville	1,485	1,246	83.9%	10	48	442	122	43	.	24	94	159	243	61	.
Correctional Industrial	1,449	1,389	95.9%	96	402	578	81	15	7	55	72	32	39	12	.
Indiana State Prison ISO	385	234	60.8%	23	55	80	24	7	.	1	2	8	30	4	.
Plainfield	1,696	1,381	81.4%	37	113	504	178	63	.	13	62	119	236	56	.
Putnamville	2,510	1,966	78.3%	31	116	720	237	60	.	46	159	175	338	83	1
Heritage Trail	868	671	77.3%	2	4	183	104	50	.	8	46	60	177	36	1
Westville	2,941	2,418	82.2%	34	174	803	315	117	.	23	130	199	495	127	1
New Castle	2,431	2,401	98.8%	15	680	972	323	27	2	1	81	140	139	21	.
Sub-Total	13,765	11,706	85.0%	248	1,592	4,282	1,384	382	9	171	646	892	1,697	400	3

INDIANA DEPARTMENT OF CORRECTION
by highest felony classification
for January 2017
snapshot date: 01/01/2017

Maximum Security - Adult MALE															
Miami	2,984	2,892	96.9%	182	819	1173	179	30	60	98	146	66	108	31	.
Indiana State Prison	2,067	1,938	93.8%	705	764	356	34	3	28	13	19	5	9	2	.
Pendleton	1,353	1,325	97.9%	444	533	230	36	4	18	15	15	6	13	8	0
Pendleton Treatment Unit	298	185	62.1%	46	41	59	13	2	3	1	8	2	7	1	.
ISR Secure Housing Unit	69	41	59.4%	11	9	16	3	1	1	.
New Castle Annex	486	422	86.8%	58	122	170	37	3	.	.	8	9	10	5	.
New Castle Mental Health	128	111	86.7%	15	33	28	9	3	.	.	3	4	9	2	.
WCU Secure Housing Unit	110	104	94.5%	14	17	44	15	2	.	.	5	.	6	1	.
Wabash Valley	1,784	1,665	93.3%	536	668	294	35	7	37	11	26	15	28	5	0
WVS Secure Housing Unit	216	162	75.0%	40	32	65	11	2	.	.	1	2	6	3	.
Sub-Total	9,495	8,845	93.2%	2,051	3,038	2,435	372	56	146	138	231	109	197	59	0

Intake Facility - Adult MALE															
Reception Diag. Center	695	521	75.0%	4	19	86	60	50	10	14	40	59	127	50	1
Sub-Total	695	521	75.0%	4	19	86	60	50	10	14	40	59	127	50	1

Minimum Security & Re-Entry - Adult FEMALE															
Facility Name	Beds	Offenders	% Capacity	Murder	FA	FB	FC	FD	F1	F2	F3	F4	F5	F6	HO
Madison	662	511	77.2%	5	25	178	61	29	.	10	16	64	94	29	.
Brandon Hall Re-Entry	13	12	92.3%	.	.	1	4	4	.	.	.	1	1	1	.
Crane House	15	15	100.0%	.	.	2	2	5	.	.	.	2	3	1	.
Jefferson Co. Re-Entry	58	38	65.5%	.	4	18	5	1	8	2	.
Theodora House	4	4	100.0%	.	.	3	1
VOA/Evansville/Female	0	0	0.0%
Sub-Total	752	580	77.1%	5	29	202	72	38	0	10	17	68	106	33	0

Medium Security - Adult FEMALE															
Facility Name	Beds	Offenders	% Capacity	Murder	FA	FB	FC	FD	F1	F2	F3	F4	F5	F6	HO
Rockville	981	879	89.6%	46	150	272	68	45	3	25	63	48	115	44	0
Sub-Total	981	879	89.6%	46	150	272	68	45	3	25	63	48	115	44	0

Maximum Security - Adult FEMALE															
Women's Prison	631	589	93.3%	71	86	150	60	35	4	14	33	28	80	28	.
Rockville Intake	288	89	30.9%	1	3	15	6	9	0	5	7	4	23	16	0
Sub-Total	919	678	73.8%	72	89	165	66	44	4	19	40	32	103	44	0

TOTAL	28,952	25,143	86.8%	2,468	5,133	8,154	2,224	714	172	382	1,059	1,344	2,769	706	4
--------------	---------------	---------------	--------------	--------------	--------------	--------------	--------------	------------	------------	------------	--------------	--------------	--------------	------------	----------

INDIANA DEPARTMENT OF CORRECTION
ADULT OFFENDERS
by Most Serious Offense, Alphabetical
for January 2017
snapshot date: 01/01/2017

Most Serious Offense	Murder	FA	FB	FC	FD	F1	F2	F3	F4	F5	F6	HO	Total
Accident Fail To Stop Resulting in Serious Injury or Death	.	.	4	1	1	11	1	.	18
Aggravated Battery	.	.	270	.	.	4	.	122	396
Aiding Inducing/Causing An Offense	.	51	91	13	.	2	6	18	20	41	.	.	242
Aiding in Manufacture of Sch II Controlled Substance	3	.	3
Arson	.	18	67	.	2	.	.	2	32	.	.	.	121
Assisting A Criminal	.	.	.	9	3	1	.	13
Assisting Suicide	.	.	.	1	1
Attempt To Commit Felony	.	564	164	22	6	39	8	31	12	45	3	.	894
Auto Theft, Receiving Stolen Auto Parts	.	.	.	28	16	1	51	.	96
Battery	.	25	61	215	15	.	3	22	1	419	34	.	795
Battery By Bodily Waste	.	.	.	3	3	6
Battery On Law Enforcement	1	1
Battery To A Child Causing Death	.	7	7
Bribery	.	.	.	1	2	.	.	3
Burglary	.	290	1,580	385	.	13	50	10	531	332	.	.	3,191
Carjacking	.	.	59	59
Carrying Handgun Without License	.	.	.	26	26
Causing Suicide	.	.	1	1
Check Deception	1	1
Check Fraud	.	.	.	4	2	1	.	7
Child Exploitation	.	.	.	12	1	10	.	.	23
Child Molesting	.	1,450	505	206	.	78	.	55	88	.	.	.	2,382
Child Seduction	.	.	.	3	2	3	.	.	8
Child Solicitation	.	.	1	10	3	.	.	.	6	22	.	.	42
Conspiracy	.	129	124	17	2	2	19	15	13	29	.	.	350
Controlled Substance Registration	.	.	.	4	3	1	1	.	9
Conversion	2	.	.	2
Corrupt Business Influence	.	.	.	30	30	.	.	60
Criminal Confinement	.	.	180	36	6	.	2	47	.	42	4	.	317
Criminal Deviate Conduct	.	142	105	247
Criminal Gang Activity	1	1
Criminal Recklessness	.	.	.	24	15	29	6	.	74
Criminal Trespass	1	1	.	2
Dangerous Control Of A Handgun	2	.	.	2
Dangerous Possession Of A Handgun	.	.	.	1	1
Deal Sub Represented To Be Controlled Sub	4	.	4
Deal Substance Represented To Be Controlled Substance	1	1
Dealing In A Schedule V Controlled Substance	.	.	2	2	.	.	4
Dealing In Cocaine Or Narcotic Drug	.	971	1,055	2	.	.	111	80	139	218	.	.	2,576
Dealing In Marijuana, Hash, or Hash Oil	.	.	.	13	5	12	2	.	32
Dealing In Methamphetamine	.	257	883	.	.	.	104	88	184	280	.	.	1,796
Dealing In Schedule IV Controlled Substance	.	.	23	17	.	.	.	4	.	5	.	.	49
Dealing Possessing Look-Alike Substance	.	.	.	9	16	4	.	29

INDIANA DEPARTMENT OF CORRECTION
ADULT OFFENDERS
by Most Serious Offense, Alphabetical
for January 2017
snapshot date: 01/01/2017

Most Serious Offense	Murder	FA	FB	FC	FD	F1	F2	F3	F4	F5	F6	HO	Total
Dealing In a Schedule I, II, or III Controlled Substance	.	110	520	.	.	.	9	6	14	17	2	.	678
Disarming A Law Enforcement Officer	.	.	.	5	.	.	.	1	.	7	.	.	13
Distribute Destructive Device To Minor	.	.	1	1
Domestic Battery	26	6	22	.	54
Driving While Intoxicated	1	1
Driving While Intoxicated Result - Death	.	.	.	1	1
Dumping Controlled Substance Waste	1	.	1
Escape	3	51	51	.	105
Fail To Return To Accident Resulting in Serious Injury	11	11
Fail To Stop After Accident - Operating Vehicle Intoxicated	.	.	4	4
Fail To Stop At An Accident/Sbi/Prior	1	1
Failure Of Sex Offender To Possess Id	1	1
Failure To Appear	2	.	2
Failure To Register As A Sex Offender	.	.	.	39	8	115	6	.	168
Failure To Return Lawful Detention/Escape	.	.	12	39	14	65
Firearm Within 1 Mile School Property Without License	.	.	.	30	30
Forgery,Counterfeiting,Application Fraud	.	.	.	262	6	16	.	284
Fraud	10	7	.	17
Fraud On A Financial Institution	.	.	.	25	41	.	.	66
Habitual Offender	3	3
Habitual Offender Substance Abuse	4	1	5
Handgun Violation	.	.	.	2	2
Handgun Violation (Felony Within 15 Yrs)	.	.	.	16	185	.	.	201
Home Improvement Fraud Enhancement	.	.	.	4	4
Home Improvement Fraud Offenses	1	1
Human Sexual Trafficking	.	.	4	2	1	.	.	.	7
Identity Deception	.	.	.	1	4	3	.	8
Illegal Possession Of Firearm By Felon	.	.	.	1	1
Incest	.	.	24	15	2	4	.	.	45
Insurance Fraud	.	.	.	1	1
Intimidation	.	.	.	31	13	57	14	.	115
Invasion Of Privacy	3	4	.	7
Involuntary Manslaughter	.	.	.	3	3
Kidnapping	.	88	5	5	.	3	.	.	101
Maintaining Common Nuisance	12	13	.	25
Minor Passenger In Vehicle - Previous Conviction	.	.	.	1	1
Mischief	1	1
Murder	2,468	2,468
Neglect Of A Dependent	.	.	51	20	4	11	2	.	88

INDIANA DEPARTMENT OF CORRECTION
ADULT OFFENDERS
by Most Serious Offense, Alphabetical
for January 2017
snapshot date: 01/01/2017

Most Serious Offense	Murder	FA	FB	FC	FD	F1	F2	F3	F4	F5	F6	HO	Total
Neglect Of A Dependent Resulting in Serious Injury	40	40
Neglect Of Dependent Resulting In Death	.	66	.	.	.	10	76
Non Support Of Dependent Child	.	.	.	91	31	4	3	.	129
OPER VEH .15 OR MORE - PRIOR CONVICTION	1	.	.	1
Obliterating Handgun I.D.	.	.	.	3	5	.	.	8
Obstruction Of Justice	2	5	.	7
Operate Vehicle After Suspended For Life	.	.	.	112	250	.	.	362
Operating Vehicle Intoxicated Resulting in Death	.	.	56	9	26	15	.	.	106
Operating Vehicle Intoxicated Resulting in Serious Bodily Injury	.	.	.	7	3	7	3	.	20
Operating Vehicle While Intoxicated-Previous Conviction	55	2	34	.	91
Operating Vehicle With Schedule I in Body - Causing Death	.	.	.	1	1
Operating Vehicle-Habit Traffic Violator	.	.	.	3	18	17	.	38
Opererating Vehicle - Schedule I Or II Control Substance	3	3
Opererating Vehicle While Intoxicated - Endangering Person	8	8
Opererating Vehicle While Intoxicated - Prior Conviction	26	.	26
Pointing A Firearm	1	1
Possess Chemical Reagents Or Precursors	.	.	.	18	6	.	.	24
Possess Destructive Device Or Explosive	.	1	1	2
Possess Methamphetamine Without Pay Tax	1	1
Possess Of Precursors	12	11	.	23
Possession Of A Controlled Substance	.	.	1	31	40	72
Possession Of Child Pornography	5	.	5
Possession Of Cocaine Or Narcotic Drug	.	66	95	44	30	.	.	12	25	58	49	.	379
Possession Of Dangerous Device	5	1	.	.	6
Possession Of Marijuana, Hash, Hash Oil	18	18
Possession Of Methamphetamine	.	7	76	27	35	.	.	23	24	65	43	.	300
Possession Of Paraphernalia	3	4	.	7
Possession Of Syringes Or Needles	.	.	.	2	13	19	17	.	51
Possession Or Use Of Legend Drug	.	.	.	1	1	4	.	6
Prisoner Poss. Dangerous Device/Material	.	.	11	2	13
Promoting Prostitution	.	.	.	2	2
Promoting Prostitution Under Age 18	.	.	5	5
Prostitution	1	.	1
Public Indecency	2	.	2
Rape	.	275	152	.	.	24	.	39	490
Reckless Homicide	.	.	.	23	15	.	.	38
Reckless Vehicle Work Zone Causing Death	.	.	.	1	1
Removing, Damaging, Or Altering a VIN	.	.	.	1	1

INDIANA DEPARTMENT OF CORRECTION
ADULT OFFENDERS
by Most Serious Offense, Alphabetical
for January 2017
snapshot date: 01/01/2017

Most Serious Offense	Murder	FA	FB	FC	FD	F1	F2	F3	F4	F5	F6	HO	Total
Residential Entry	9	22	.	31
Resisting Law Enforcement	.	.	7	2	16	.	.	5	.	6	27	.	63
Robbery	.	262	1,199	149	.	.	38	421	.	171	.	.	2,240
Sale Of Unregistered Security	.	.	.	2	2
Security Fraud	.	.	1	1	2
Sexual Battery	.	.	.	1	6	.	.	.	3	.	5	.	15
Sexual Misconduct Gov Employe W/Detainee	.	.	.	1	1
Sexual Misconduct With A Minor	.	3	273	59	2	.	.	.	51	33	.	.	421
Stalking	.	.	3	12	1	.	.	.	5	21	.	.	42
Strangulation	13	15	.	28
Theft,Receiving Stolen Property	.	.	.	6	193	6	153	.	358
Trafficking With An Inmate	.	.	.	15	28	.	.	43
Unlawful Firearm Poss By Serious Felon	.	.	431	157	.	.	.	588
Unlawful Medical Practice	1	.	.	1
Unlawful Transfer of Handgun Ownership	1	.	.	1
Vicarious Sexual Gratification	.	.	4	2	1	.	.	.	7
Viol/Failure Of Carriers Duty To Warn	1	1
Violation Of Custody Order	1	1
Voluntary Manslaughter	.	351	49	.	.	.	26	426
Voyeurism	1	1	.	2
Welfare Fraud	.	.	.	8	2	10
Total	2,468	5,133	8,154	2,224	714	172	382	1,059	1,344	2,769	706	4	25,129

INDIANA DEPARTMENT OF CORRECTION
ADULT OFFENDERS
by Most Serious Offense, Ranked
for January 2017
snapshot date: 01/01/2017

Most Serious Offense	Murder	FA	FB	FC	FD	F1	F2	F3	F4	F5	F6	HO	Total
Burglary	.	290	1,580	385	.	13	50	10	531	332	.	.	3,191
Dealing In Cocaine Or Narcotic Drug	.	971	1,055	2	.	.	111	80	139	218	.	.	2,576
Murder	2,468	2,468
Child Molesting	.	1,450	505	206	.	78	.	55	88	.	.	.	2,382
Robbery	.	262	1,199	149	.	.	38	421	.	171	.	.	2,240
Dealing In Methamphetamine	.	257	883	.	.	.	104	88	184	280	.	.	1,796
Attempt To Commit Felony	.	564	164	22	6	39	8	31	12	45	3	.	894
Battery	.	25	61	215	15	.	3	22	1	419	34	.	795
Dealing In a Schedule I, II, or III Controlled Substance	.	110	520	.	.	.	9	6	14	17	2	.	678
Unlawful Firearm Poss By Serious Felon	.	.	431	157	.	.	.	588
Rape	.	275	152	.	.	24	.	39	490
Voluntary Manslaughter	.	351	49	.	.	.	26	426
Sexual Misconduct With A Minor	.	3	273	59	2	.	.	.	51	33	.	.	421
Aggravated Battery	.	.	270	.	.	4	.	122	396
Possession Of Cocaine Or Narcotic Drug	.	66	95	44	30	.	.	12	25	58	49	.	379
Operate Vehicle After Suspended For Life	.	.	.	112	250	.	.	362
Theft,Receiving Stolen Property	.	.	.	6	193	6	153	.	358
Conspiracy	.	129	124	17	2	2	19	15	13	29	.	.	350
Criminal Confinement	.	.	180	36	6	.	2	47	.	42	4	.	317
Possession Of Methamphetamine	.	7	76	27	35	.	.	23	24	65	43	.	300
Forgery,Counterfeiting,Application Fraud	.	.	.	262	6	16	.	284
Criminal Deviate Conduct	.	142	105	247
Aiding Inducing/Causing An Offense	.	51	91	13	.	2	6	18	20	41	.	.	242
Handgun Violation (Felony Within 15 Yrs)	.	.	.	16	185	.	.	201
Failure To Register As A Sex Offender	.	.	.	39	8	115	6	.	168
Non Support Of Dependent Child	.	.	.	91	31	4	3	.	129
Arson	.	18	67	.	2	.	.	2	32	.	.	.	121
Intimidation	.	.	.	31	13	57	14	.	115
Operating Vehicle Intoxicated Resulting in Death	.	.	56	9	26	15	.	.	106
Escape	3	51	51	.	105
Kidnapping	.	88	5	5	.	3	.	.	101
Auto Theft, Receiving Stolen Auto Parts	.	.	.	28	16	1	51	.	96
Operating Vehicle While Intoxicated-Previous Conviction	55	2	34	.	91
Neglect Of A Dependent	.	.	51	20	4	11	2	.	88
Neglect Of Dependent Resulting In Death	.	66	.	.	.	10	76
Criminal Recklessness	.	.	.	24	15	29	6	.	74
Possession Of A Controlled Substance	.	.	1	31	40	72
Fraud On A Financial Institution	.	.	.	25	41	.	.	66
Failure To Return Lawful Detention/Escape	.	.	12	39	14	65
Resisting Law Enforcement	.	.	7	2	16	.	.	5	.	6	27	.	63

INDIANA DEPARTMENT OF CORRECTION
ADULT OFFENDERS
by Most Serious Offense, Ranked
for January 2017
snapshot date: 01/01/2017

Most Serious Offense	Murder	FA	FB	FC	FD	F1	F2	F3	F4	F5	F6	HO	Total
Corrupt Business Influence	.	.	.	30	30	.	.	60
Carjacking	.	.	59	59
Domestic Battery	26	6	22	.	54
Possession Of Syringes Or Needles	.	.	.	2	13	19	17	.	51
Dealing In Schedule IV Controlled Substance	.	.	23	17	.	.	.	4	.	5	.	.	49
Incest	.	.	24	15	2	4	.	.	45
Trafficking With An Inmate	.	.	.	15	28	.	.	43
Child Solicitation	.	.	1	10	3	.	.	.	6	22	.	.	42
Stalking	.	.	3	12	1	.	.	.	5	21	.	.	42
Neglect Of A Dependent Resulting in Serious Injury	40	40
Operating Vehicle-Habit Traffic Violator	.	.	.	3	18	17	.	38
Reckless Homicide	.	.	.	23	15	.	.	38
Dealing In Marijuana, Hash, or Hash Oil	.	.	.	13	5	12	2	.	32
Residential Entry	9	22	.	31
Firearm Within 1 Mile School Property Without License	.	.	.	30	30
Dealing Possessing Look-Alike Substance	.	.	.	9	16	4	.	29
Strangulation	13	15	.	28
Carrying Handgun Without License	.	.	.	26	26
Opererating Vehicle While Intoxicated - Prior Conviction	26	.	26
Maintaining Common Nuisance	12	13	.	25
Possess Chemical Reagents Or Precursors	.	.	.	18	6	.	.	24
Child Exploitation	.	.	.	12	1	10	.	.	23
Possess Of Precursors	12	11	.	23
Operating Vehicle Intoxicated Resulting in Serious Bodily Injury	.	.	.	7	3	7	3	.	20
Accident Fail To Stop Reulting in Serious Injury or Death	.	.	4	1	1	11	1	.	18
Possession Of Marijuana, Hash, Hash Oil	18	18
Fraud	10	7	.	17
Sexual Battery	.	.	.	1	6	.	.	.	3	.	5	.	15
Assisting A Criminal	.	.	.	9	3	1	.	13
Disarming A Law Enforcement Officer	.	.	.	5	.	.	.	1	.	7	.	.	13
Prisoner Poss. Dangerous Device/Material	.	.	11	2	13
Fail To Return To Accident Resulting in Serious Injury	11	11
Welfare Fraud	.	.	.	8	2	10
Controlled Substance Registration	.	.	.	4	3	1	1	.	9
Child Seduction	.	.	.	3	2	3	.	.	8
Identity Deception	.	.	.	1	4	3	.	8

INDIANA DEPARTMENT OF CORRECTION
ADULT OFFENDERS
by Most Serious Offense, Ranked
for January 2017
snapshot date: 01/01/2017

Most Serious Offense	Murder	FA	FB	FC	FD	F1	F2	F3	F4	F5	F6	HO	Total
Obliterating Handgun I.D.	.	.	.	3	5	.	.	8
Opererating Vehicle While Intoxicated - Endangering Person	8	8
Battery To A Child Causing Death	.	7	7
Check Fraud	.	.	.	4	2	1	.	7
Human Sexual Trafficking	.	.	4	2	1	.	.	.	7
Invasion Of Privacy	3	4	.	7
Obstruction Of Justice	2	5	.	7
Possession Of Paraphernalia	3	4	.	7
Vicarious Sexual Gratification	.	.	4	2	1	.	.	.	7
Battery By Bodily Waste	.	.	.	3	3	6
Possession Of Dangerous Device	5	1	.	.	6
Possession Or Use Of Legend Drug	.	.	.	1	1	4	.	6
Habitual Offender Substance Abuse	4	1	5
Possession Of Child Pornography	5	.	5
Promoting Prostitution Under Age 18	.	.	5	5
Deal Sub Represented To Be Controlled Sub	4	.	4
Dealing In A Schedule V Controlled Substance	.	.	2	2	.	.	4
Fail To Stop After Accident - Operating Vehicle Intoxicated	.	.	4	4
Home Improvement Fraud Enhancement	.	.	.	4	4
Aiding in Manufacture of Sch II Controlled Substance	3	.	3
Bribery	.	.	.	1	2	.	.	3
Habitual Offender	3	3
Involuntary Manslaughter	.	.	.	3	3
Opererating Vehicle - Schedule I Or II Control Substance	3	3
Conversion	2	.	.	2
Criminal Trespass	1	1	.	2
Dangerous Control Of A Handgun	2	.	.	2
Failure To Appear	2	.	2
Handgun Violation	.	.	.	2	2
Possess Destructive Device Or Explosive	.	1	1	2
Promoting Prostitution	.	.	.	2	2
Public Indecency	2	.	2
Sale Of Unregistered Security	.	.	.	2	2
Security Fraud	.	.	1	1	2
Voyeurism	1	1	.	2
Assisting Suicide	.	.	.	1	1
Battery On Law Enforcement	1	1
Causing Suicide	.	.	1	1

INDIANA DEPARTMENT OF CORRECTION
ADULT OFFENDERS
by Most Serious Offense, Ranked
for January 2017
snapshot date: 01/01/2017

Most Serious Offense	Murder	FA	FB	FC	FD	F1	F2	F3	F4	F5	F6	HO	Total
Check Deception	1	1
Criminal Gang Activity	1	1
Dangerous Possession Of A Handgun	.	.	.	1	1
Deal Substance Represented To Be Controlled Substance	1	1
Distribute Destructive Device To Minor	.	.	1	1
Driving While Intoxicated	1	1
Driving While Intoxicated Result - Death	.	.	.	1	1
Dumping Controlled Substance Waste	1	.	1
Fail To Stop At An Accident/Sbi/Prior	1	1
Failure Of Sex Offender To Possess Id	1	1
Home Improvement Fraud Offenses	1	1
Illegal Possession Of Firearm By Felon	.	.	.	1	1
Insurance Fraud	.	.	.	1	1
Minor Passenger In Vehicle - Previous Conviction	.	.	.	1	1
Mischief	1	1
OPER VEH .15 OR MORE - PRIOR CONVICTION	1	.	.	1
Operating Vehicle With Schedule I in Body - Causing Death	.	.	.	1	1
Pointing A Firearm	1	1
Possess Methamphetamine Without Pay Tax	1	1
Prostitution	1	.	1
Reckless Vehicle Work Zone Causing Death	.	.	.	1	1
Removing, Damaging, Or Altering a VIN	.	.	.	1	1
Sexual Misconduct Gov Employee W/Detainee	.	.	.	1	1
Unlawful Medical Practice	1	.	.	1
Unlawful Transfer of Handgun Ownership	1	.	.	1
Viol/Failure Of Carriers Duty To Warn	1	1
Violation Of Custody Order	1	1
Total	2,468	5,133	8,154	2,224	714	172	382	1,059	1,344	2,769	706	4	25,129

INDIANA DEPARTMENT OF CORRECTION
ADULT OFFENDERS
by Most Serious Offense
for January 2017
snapshot date: 01/01/2017

Branchville Correctional Facility												
Most Serious Offense	Murder	FA	FB	FC	FD	F1	F2	F3	F4	F5	F6	Total
Accident Fail To Stop Resulting in Serious Injury or Death	1	1	2
Aggravated Battery	.	.	7	8	.	.	.	15
Aiding Inducing/Causing An Offense	.	.	8	1	.	.	1	2	1	3	.	16
Arson	.	.	4	4
Assisting A Criminal	1	.	1
Attempt To Commit Felony	.	7	10	1	.	.	1	2	2	4	.	27
Auto Theft, Receiving Stolen Auto Parts	1	4	5
Battery	.	.	2	18	1	.	.	2	.	34	7	64
Battery On Law Enforcement	1	1
Burglary	.	4	100	26	.	.	1	1	67	38	.	237
Carrying Handgun Without License	.	.	.	1	1
Child Molesting	.	2	1	3
Conspiracy	.	2	8	3	.	.	1	4	1	4	.	23
Controlled Substance Registration	.	.	.	1	1	.	2
Corrupt Business Influence	1	.	1
Criminal Confinement	.	.	3	2	.	.	.	6	.	5	1	17
Criminal Recklessness	.	.	.	2	2	2	6
Criminal Trespass	1	1
Dealing In Cocaine Or Narcotic Drug	.	16	75	.	.	.	6	12	16	13	.	138
Dealing In Marijuana, Hash, or Hash Oil	.	.	.	4	2	.	6
Dealing In Methamphetamine	.	8	81	.	.	.	12	19	37	13	.	170
Dealing In Sched Iv Controlled Substance	2	.	.	.	2
Dealing In Schedule IV Controlled Substance	.	.	3	1	4
Dealing A Sched I, Ii, Iii Control Subst	2	1	.	.	.	3
Dealing In a Schedule I, II, or III Controlled Substance	.	3	45	2	.	50
Disarming A Law Enforcement Officer	.	.	.	1	1
Domestic Battery	2	1	1	4
Escape	1	5	2	8
Fail To Return To Accident Resulting in Serious Injury	1	.	.	.	1
Failure To Register As A Sex Offender	.	.	.	2	11	.	13
Failure To Return Lawful Detention/Escape	.	.	1	.	2	3
Firearm Within 1 Mile School Property Without License	.	.	.	1	1
Forgery,Counterfeiting,Application Fraud	.	.	.	15	15
Fraud	1	1	2
Fraud On A Financial Institution	7	.	7

INDIANA DEPARTMENT OF CORRECTION
ADULT OFFENDERS
by Most Serious Offense
for January 2017
snapshot date: 01/01/2017

Branchville Correctional Facility												
Most Serious Offense	Murder	FA	FB	FC	FD	F1	F2	F3	F4	F5	F6	Total
Habitual Offender Substance Abuse	1	1
Handgun Violation (Felony Within 15 Yrs)	21	.	21
Home Improvement Fraud Enhancement	.	.	.	1	1
Intimidation	.	.	.	2	1	3	2	8
Kidnapping	1	.	1
Maintaining Common Nuisance	2	2
Murder	10	10
Neglect Of A Dependent	.	.	2	2
Neglect Of A Dependent Resulting in Serious Injury	1	.	.	.	1
Non Support Of Dependent Child	.	.	.	8	4	12
Operate Vehicle After Suspended For Life	.	.	.	6	29	.	35
Operating Vehicle Intoxicated Resulting in Death	.	.	5	2	.	.	7
Operating Vehicle Intoxicated Resulting in Serious Bodily Injury	.	.	.	1	1	2
Operating Vehicle While Intoxicated-Previous Conviction	4	1	5
Operating Vehicle-Habit Traffic Violator	.	.	.	1	1	2
Opererating Vehicle While Intoxicated - Endangering Person	1	1
Opererating Vehicle While Intoxicated - Prior Conviction	3	3
Possess Chemical Reagents Or Precursors	.	.	.	4	4
Possess Of Precursors	1	1	2
Possession Of A Controlled Substance	.	.	.	3	3
Possession Of Cocaine Or Narcotic Drug	.	1	7	2	4	.	.	1	3	6	5	29
Possession Of Marijuana, Hash, Hash Oil	3	3
Possession Of Methamphetamine	.	.	10	2	2	.	.	5	8	9	8	44
Possession Of Syringes Or Needles	1	2	.	3
Rape	.	1	1
Reckless Homicide	.	.	.	2	2	.	4
Reckless Vehicle Work Zone Causing Death	.	.	.	1	1
Resisting Law Enforcement	.	.	.	1	2	.	.	1	.	.	4	8
Robbery	.	1	42	6	.	.	.	26	.	15	.	90
Sexual Misconduct With A Minor	.	.	1	1
Stalking	2	.	2
Strangulation	2	2
Theft,Receiving Stolen Property	.	.	.	1	8	1	13	23
Trafficking With An Inmate	.	.	.	1	4	.	5
Unlawful Firearm Poss By Serious Felon	.	.	25	21	.	.	46
Viol/Failure Of Carriers Duty To Warn	1	1
Voluntary Manslaughter	.	3	2	5
Welfare Fraud	.	.	.	1	1
Total	10	48	442	122	43	.	24	94	159	243	61	1,246

INDIANA DEPARTMENT OF CORRECTION
ADULT OFFENDERS
by Most Serious Offense
for January 2017
snapshot date: 01/01/2017

Correctional Industrial Facility												
Most Serious Offense	Murder	FA	FB	FC	FD	F1	F2	F3	F4	F5	F6	Total
Accident Fail To Stop Reulting in Serious Injury or Death	.	.	1	1
Aggravated Battery	.	.	32	.	.	1	.	14	.	.	.	47
Aiding Inducing/Causing An Offense	.	6	6	12
Arson	.	4	6	1	.	.	11
Assisting A Criminal	.	.	.	1	1
Attempt To Commit Felony	.	33	13	.	.	1	1	2	.	1	1	52
Auto Theft, Receiving Stolen Auto Parts	.	.	.	1	1	1	3
Battery	.	1	10	10	8	2	31
Burglary	.	27	146	15	.	1	13	2	17	1	.	222
Carjacking	.	.	8	8
Child Molesting	.	53	7	2	.	1	.	4	2	.	.	69
Conspiracy	.	21	10	.	.	.	2	1	.	.	.	34
Criminal Confinement	.	.	22	.	.	.	1	5	.	.	.	28
Criminal Deviate Conduct	.	3	2	5
Criminal Gang Activity	1	1
Criminal Recklessness	.	.	.	1	1	2
Dangerous Control Of A Handgun	1	.	1
Dealing In Cocaine Or Narcotic Drug	.	129	65	.	.	.	18	4	2	2	.	220
Dealing In Methamphetamine	.	42	44	.	.	.	15	2	1	2	.	106
Dealing In Sched Iv Controlled Substance	1	.	.	.	1
Dealing In Schedule IV Controlled Substance	.	.	2	2
Dealing Possessing Look-Alike Substance	.	.	.	1	1
Dealing In a Schedule I, II, or III Controlled Substance	.	10	24	34
Disarming A Law Enforcement Officer	.	.	.	1	.	.	.	1	.	.	.	2
Domestic Battery	1	1	2
Escape	1	1	2
Fail To Return To Accident Resulting in Serious Injury	2	.	.	.	2
Failure To Register As A Sex Offender	.	.	.	3	1	.	4
Failure To Return Lawful Detention/Escape	.	.	1	3	4
Firearm Within 1 Mile School Property Without License	.	.	.	1	1
Forgery,Counterfeiting,Application Fraud	.	.	.	13	1	14
Fraud	1	1
Habitual Offender Substance Abuse	1	1

INDIANA DEPARTMENT OF CORRECTION
ADULT OFFENDERS
by Most Serious Offense
for January 2017
snapshot date: 01/01/2017

Correctional Industrial Facility												
Most Serious Offense	Murder	FA	FB	FC	FD	F1	F2	F3	F4	F5	F6	Total
Handgun Violation (Felony Within 15 Yrs)	.	.	.	1	6	.	7
Home Improvement Fraud Enhancement	.	.	.	1	1
Human Sexual Trafficking	.	.	1	1
Incest	.	.	1	1
Intimidation	.	.	.	3	4	.	7
Kidnapping	.	9	9
Murder	96	96
Neglect Of A Dependent	.	.	2	2
Neglect Of A Dependent Resulting in Serious Injury	2	.	.	.	2
Neglect Of Dependent Resulting In Death	.	2	.	.	.	2	4
Non Support Of Dependent Child	.	.	.	1	1
Obliterating Handgun I.D.	1	.	1
Operate Vehicle After Suspended For Life	.	.	.	5	4	.	9
Operating Vehicle Intoxicated Resulting in Death	.	.	1	1	.	.	2
Operating Vehicle While Intoxicated-Previous Conviction	1	1
Possess Destructive Device Or Explosive	.	1	1
Possess Of Precursors	1	1
Possession Of A Controlled Substance	.	.	1	1	1	3
Possession Of Cocaine Or Narcotic Drug	.	3	7	.	1	.	.	.	2	.	.	13
Possession Of Marijuana, Hash, Hash Oil	1	1
Possession Of Methamphetamine	.	.	3	2	.	.	.	2	2	.	.	9
Possession Of Syringes Or Needles	1	1
Prisoner Poss. Dangerous Device/Material	.	.	1	1
Rape	.	2	6	.	.	1	9
Reckless Homicide	.	.	.	2	2
Resisting Law Enforcement	1	.	.	.	1
Robbery	.	24	109	11	.	.	2	29	.	4	.	179
Security Fraud	.	.	1	1
Sexual Misconduct With A Minor	.	.	8	1	.	.	9
Stalking	1	.	1
Strangulation	1	1	2
Theft,Receiving Stolen Property	.	.	.	1	5	1	7
Trafficking With An Inmate	.	.	.	1	2	.	3

INDIANA DEPARTMENT OF CORRECTION
 ADULT OFFENDERS
 by Most Serious Offense
 for January 2017
 snapshot date: 01/01/2017

Correctional Industrial Facility												
Most Serious Offense	Murder	FA	FB	FC	FD	F1	F2	F3	F4	F5	F6	Total
Unlawful Firearm Poss By Serious Felon	.	.	35	3	.	.	38
Voluntary Manslaughter	.	32	3	.	.	.	3	38
Total	96	402	578	81	15	7	55	72	32	39	12	1,389

INDIANA DEPARTMENT OF CORRECTION
ADULT OFFENDERS
by Most Serious Offense
for January 2017
snapshot date: 01/01/2017

Chain O'Lakes Correctional Facility												
Most Serious Offense	Murder	FA	FB	FC	FD	F1	F2	F3	F4	F5	F6	Total
Aiding Inducing/Causing An Offense	1	.	.	.	1
Attempt To Commit Felony	.	.	2	1	.	1	.	4
Battery	1	.	1
Burglary	.	.	7	4	6	8	.	25
Corrupt Business Influence	1	.	1
Criminal Trespass	1	1
Dealing In Cocaine Or Narcotic Drug	.	9	4	2	1	.	16
Dealing In Methamphetamine	.	1	18	.	.	.	1	1	1	7	.	29
Dealing Possessing Look-Alike Substance	1	.	1
Dealing In a Schedule I, II, or III Controlled Substance	.	1	2	3
Firearm Within 1 Mile School Property Without License	.	.	.	2	2
Forgery,Counterfeiting,Application Fraud	.	.	.	1	1
Intimidation	1	1
Neglect Of A Dependent	1	.	1
Non Support Of Dependent Child	.	.	.	1	1
Operate Vehicle After Suspended For Life	.	.	.	3	5	.	8
Operating Vehicle Intoxicated Resulting in Death	.	.	1	1	.	2
Operating Vehicle While Intoxicated-Previous Conviction	1	2	3
Possession Of A Controlled Substance	1	1
Possession Of Cocaine Or Narcotic Drug	.	1	1
Possession Of Marijuana, Hash, Hash Oil	1	1
Possession Of Methamphetamine	.	.	1	1	1	1	4
Possession Of Paraphernalia	1	1
Robbery	.	.	8	1	.	.	.	2	.	.	.	11
Theft,Receiving Stolen Property	.	.	.	1	1	1	3
Unlawful Firearm Poss By Serious Felon	.	.	3	1	.	.	4
Total	.	12	46	14	5	.	1	5	10	28	6	127

INDIANA DEPARTMENT OF CORRECTION
ADULT OFFENDERS
by Most Serious Offense
for January 2017
snapshot date: 01/01/2017

Edinburgh Correctional Facility												
Most Serious Offense	Murder	FA	FB	FC	FD	F1	F2	F3	F4	F5	F6	Total
Accident Fail To Stop Reulting in Serious Injury or Death	1	.	1
Aiding Inducing/Causing An Offense	.	.	4	1	5
Arson	.	.	1	1	.	.	2
Assisting A Criminal	.	.	.	1	1
Attempt To Commit Felony	.	1	1	1	1	1	.	5
Auto Theft, Receiving Stolen Auto Parts	.	.	.	1	1	2
Battery	1	3	.	4
Bribery	1	.	1
Burglary	.	1	20	9	13	17	.	60
Conspiracy	.	1	3	.	.	.	1	5
Corrupt Business Influence	1	.	1
Dealing In Cocaine Or Narcotic Drug	.	14	18	.	.	.	1	1	6	6	.	46
Dealing In Marijuana, Hash, or Hash Oil	1	1
Dealing In Methamphetamine	.	3	32	1	4	5	.	45
Dealing In Schedule IV Controlled Substance	.	.	1	1
Dealing In a Schedule I, II, or III Controlled Substance	.	1	14	1	16
Forgery,Counterfeiting,Application Fraud	.	.	.	5	1	6
Fraud On A Financial Institution	2	.	2
Habitual Offender Substance Abuse	1	1
Handgun Violation (Felony Within 15 Yrs)	9	.	9
Insurance Fraud	.	.	.	1	1
Intimidation	1	1
Non Support Of Dependent Child	.	.	.	3	6	9
Operate Vehicle After Suspended For Life	.	.	.	4	9	.	13
Operating Vehicle Intoxicated Resulting in Death	.	.	6	1	.	7
Operating Vehicle While Intoxicated-Previous Conviction	2	2	4
Operating Vehicle-Habit Traffic Violator	1	1	2
Possess Of Precursors	1	1
Possession Of A Controlled Substance	.	.	.	1	1
Possession Of Cocaine Or Narcotic Drug	.	.	1	.	1	1	.	3
Possession Of Marijuana, Hash, Hash Oil	1	1
Possession Of Methamphetamine	.	1	2	1	1	3	1	9
Possession Of Syringes Or Needles	3	1	4

INDIANA DEPARTMENT OF CORRECTION
 ADULT OFFENDERS
 by Most Serious Offense
 for January 2017
 snapshot date: 01/01/2017

Edinburgh Correctional Facility												
Most Serious Offense	Murder	FA	FB	FC	FD	F1	F2	F3	F4	F5	F6	Total
Possession Or Use Of Legend Drug	1	1
Residential Entry	1	1
Resisting Law Enforcement	1	1	2
Robbery	.	.	5	4	.	.	.	1	.	5	.	15
Theft,Receiving Stolen Property	8	1	1	10
Unlawful Firearm Poss By Serious Felon	.	.	5	5
Total	.	22	113	31	26	.	2	4	26	69	11	304

INDIANA DEPARTMENT OF CORRECTION
ADULT OFFENDERS
by Most Serious Offense
for January 2017
snapshot date: 01/01/2017

Heritage Trail Correctional Facility													
Most Serious Offense	Murder	FA	FB	FC	FD	F1	F2	F3	F4	F5	F6	HO	Total
Accident Fail To Stop Reulting in Serious Injury or Death	1	.	.	1
Aggravated Battery	.	.	2	2	4
Aiding Inducing/Causing An Offense	.	.	1	1	2	1	.	.	5
Arson	1	.	.	.	1
Assisting A Criminal	1	.	.	1
Attempt To Commit Felony	.	.	2	2	.	.	.	3	1	3	.	.	11
Auto Theft, Receiving Stolen Auto Parts	.	.	.	1	3	.	4
Battery	.	.	1	13	3	53	3	.	73
Burglary	.	.	50	19	23	21	.	.	113
Carjacking	.	.	4	4
Check Fraud	1	1
Conspiracy	.	.	1	2	3
Corrupt Business Influence	.	.	.	1	2	.	.	3
Criminal Confinement	.	.	2	2	.	.	.	2	.	4	.	.	10
Criminal Recklessness	3	3	1	.	7
Dealing In Cocaine Or Narcotic Drug	.	2	40	.	.	.	5	6	8	7	.	.	68
Dealing In Methamphetamine	.	2	31	.	.	.	2	1	3	7	.	.	46
Dealing In Schedule IV Controlled Substance	.	.	1	1	2
Dealing Possessing Look-Alike Substance	1	1	.	2
Dealng A Sched I, Ii, Iii Control Subst	1	1	.	.	.	2
Dealng In a Schedule I, II, or III Controlled Substance	.	.	20	20
Disarming A Law Enforcement Officer	.	.	.	2	2
Domestic Battery	4	1	2	.	7
Escape	1	1	2	.	4
Fail To Return To Accident Resulting in Serious Injury	1	1
Failure To Return Lawful Detention/Escape	.	.	.	2	1	3
Forgery,Counterfeiting,Application Fraud	.	.	.	14	1	.	15
Habitual Offender	1	1
Handgun Violation (Felony Within 15 Yrs)	15	.	.	15
Intimidation	.	.	.	1	6	1	.	8
Invasion Of Privacy	1	1	.	2
Murder	2	2
Neglect Of A Dependent	.	.	2	1	1	1	.	.	5
Neglect Of A Dependent Resulting in Serious Injury	1	1
Non Support Of Dependent Child	.	.	.	19	3	22

INDIANA DEPARTMENT OF CORRECTION
ADULT OFFENDERS
by Most Serious Offense
for January 2017
snapshot date: 01/01/2017

Heritage Trail Correctional Facility													
Most Serious Offense	Murder	FA	FB	FC	FD	F1	F2	F3	F4	F5	F6	HO	Total
Obliterating Handgun I.D.	.	.	.	1	1
Operate Vehicle After Suspended For Life	.	.	.	6	17	.	.	23
Operating Vehicle Intoxicated Resulting in Serious Bodily Injury	.	.	.	1	1
Operating Vehicle While Intoxicated-Previous Conviction	2	2	.	4
Operating Vehicle-Habit Traffic Violator	2	1	.	3
Opererating Vehicle - Schedule I Or II Control Substance	1	1
Opererating Vehicle While Intoxicated - Prior Conviction	1	.	1
Possess Of Precursors	2	2
Possession Of A Controlled Substance	.	.	.	2	1	3
Possession Of Cocaine Or Narcotic Drug	.	.	4	5	4	.	.	.	1	4	3	.	21
Possession Of Dangerous Device	1	.	.	.	1
Possession Of Marijuana, Hash, Hash Oil	1	1
Possession Of Methamphetamine	.	.	1	1	2	5	2	.	11
Possession Of Syringes Or Needles	.	.	.	1	1	2	2	.	6
Reckless Homicide	.	.	.	1	2	.	.	3
Residential Entry	1	2	.	3
Resisting Law Enforcement	1	3	.	4
Robbery	.	.	13	6	.	.	1	26	.	14	.	.	60
Stalking	.	.	.	1	3	.	.	4
Strangulation	1	1	.	2
Theft,Receiving Stolen Property	14	4	.	18
Trafficking With An Inmate	1	.	.	1
Unlawful Firearm Poss By Serious Felon	.	.	8	18	.	.	.	26
Unlawful Transfer of Handgun Ownership	1	.	.	1
Welfare Fraud	.	.	.	1	1
Total	2	4	183	104	50	.	8	46	60	177	36	1	671

INDIANA DEPARTMENT OF CORRECTION
ADULT OFFENDERS
by Most Serious Offense
for January 2017
snapshot date: 01/01/2017

Indianapolis Re-Entry Facility												
Most Serious Offense	Murder	FA	FB	FC	FD	F1	F2	F3	F4	F5	F6	Total
Aggravated Battery	.	.	3	3
Aiding Inducing/Causing An Offense	.	1	1	2
Arson	.	1	1
Attempt To Commit Felony	.	6	3	1	.	10
Battery	.	.	2	2	4
Burglary	.	4	15	6	3	2	.	30
Conspiracy	.	3	3	1	.	7
Criminal Confinement	.	.	1	1
Criminal Recklessness	.	.	.	1	1
Dealing In Cocaine Or Narcotic Drug	.	22	20	1	.	.	.	43
Dealing In Marijuana, Hash, or Hash Oil	.	.	.	1	1
Dealing In Methamphetamine	.	3	19	1	.	2	.	25
Dealing In a Schedule I, II, or III Controlled Substance	.	2	19	21
Driving While Intoxicated Result - Death	.	.	.	1	1
Forgery,Counterfeiting,Application Fraud	.	.	.	3	3
Handgun Violation (Felony Within 15 Yrs)	1	.	1
Home Improvement Fraud Enhancement	.	.	.	1	1
Murder	12	12
Neglect Of Dependent Resulting In Death	.	1	1
Operate Vehicle After Suspended For Life	.	.	.	1	1	.	2
Operating Vehicle Intoxicated Resulting in Death	.	.	3	1	4
Possession Of Cocaine Or Narcotic Drug	.	1	.	1	2
Possession Of Methamphetamine	.	.	3	3
Reckless Homicide	.	.	.	1	1
Robbery	.	4	19	3	.	.	.	1	.	.	.	27
Theft,Receiving Stolen Property	.	.	.	1	1
Unlawful Firearm Poss By Serious Felon	.	.	9	1	.	.	10
Voluntary Manslaughter	.	11	2	13
Total	12	59	122	23	.	.	.	3	4	8	.	231

INDIANA DEPARTMENT OF CORRECTION
ADULT OFFENDERS
by Most Serious Offense
for January 2017
snapshot date: 01/01/2017

Indiana State Prison												
Most Serious Offense	Murder	FA	FB	FC	FD	F1	F2	F3	F4	F5	F6	Total
Accident Fail To Stop Reulting in Serious Injury or Death	1	.	1
Aggravated Battery	.	.	21	4	.	.	.	25
Aiding Inducing/Causing An Offense	.	4	8	2	14
Arson	.	1	1	1	.	.	3
Attempt To Commit Felony	.	100	15	.	.	8	1	124
Auto Theft, Receiving Stolen Auto Parts	.	.	.	1	1
Battery	.	7	4	9	1	9	2	32
Burglary	.	50	82	10	.	3	5	.	2	6	.	158
Carjacking	.	.	1	1
Check Fraud	.	.	.	1	1
Child Molesting	.	227	16	1	.	11	.	1	1	.	.	257
Conspiracy	.	15	3	1	.	.	.	19
Corrupt Business Influence	.	.	.	1	1	.	2
Criminal Confinement	.	.	18	1	.	19
Criminal Deviate Conduct	.	27	5	32
Criminal Recklessness	.	.	.	1	1	2
Dealing In Cocaine Or Narcotic Drug	.	136	48	.	.	.	5	2	3	3	.	197
Dealing In Marijuana, Hash, or Hash Oil	.	.	.	1	1
Dealing In Methamphetamine	.	23	17	.	.	.	1	.	2	2	.	45
Dealng A Sched I, Ii, Iii Control Subst	1	.	.	1
Dealng In a Schedule I, II, or III Controlled Substance	.	6	15	21
Domestic Battery	1	1
Escape	1	.	1
Fail To Return To Accident Resulting in Serious Injury	1	.	.	.	1
Failure To Register As A Sex Offender	.	.	.	2	2
Failure To Return Lawful Detention/Escape	.	.	2	2	4
Forgery,Counterfeiting,Application Fraud	.	.	.	7	7
Fraud On A Financial Institution	.	.	.	1	1	.	2
Human Sexual Trafficking	.	.	1	1
Incest	.	.	1	1
Intimidation	.	.	.	2	2
Kidnapping	.	19	19
Murder	728	728

INDIANA DEPARTMENT OF CORRECTION
ADULT OFFENDERS
by Most Serious Offense
for January 2017
snapshot date: 01/01/2017

Indiana State Prison												
Most Serious Offense	Murder	FA	FB	FC	FD	F1	F2	F3	F4	F5	F6	Total
Neglect Of A Dependent	.	.	4	1	5
Neglect Of Dependent Resulting In Death	.	10	.	.	.	2	12
Non Support Of Dependent Child	1	1
Operate Vehicle After Suspended For Life	.	.	.	4	7	.	11
Operating Vehicle Intoxicated Resulting in Death	.	.	3	3
Operating Vehicle While Intoxicated-Previous Conviction	1	1
Operating Vehicle-Habit Traffic Violator	1	1
Possession Of A Controlled Substance	.	.	.	1	2	3
Possession Of Cocaine Or Narcotic Drug	.	12	2	2	16
Possession Of Methamphetamine	.	.	1	1	2
Possession Of Paraphernalia	1	1
Prisoner Poss. Dangerous Device/Material	.	.	3	3
Rape	.	66	10	.	.	4	.	2	.	.	.	82
Reckless Homicide	.	.	.	1	1
Resisting Law Enforcement	.	.	3	.	1	.	.	1	.	.	.	5
Robbery	.	44	107	8	.	.	1	9	.	5	.	174
Sexual Misconduct With A Minor	.	1	9	10
Stalking	2	.	2
Theft,Receiving Stolen Property	3	3
Unlawful Firearm Poss By Serious Felon	.	.	29	3	.	.	32
Voluntary Manslaughter	.	71	7	.	.	.	1	79
Total	728	819	436	58	10	28	14	21	13	39	6	2,172

INDIANA DEPARTMENT OF CORRECTION
ADULT OFFENDERS
by Most Serious Offense
for January 2017
snapshot date: 01/01/2017

Indiana Women's Prison												
Most Serious Offense	Murder	FA	FB	FC	FD	F1	F2	F3	F4	F5	F6	Total
Accident Fail To Stop Reulting in Serious Injury or Death	.	.	.	1	1	.	2
Aggravated Battery	.	.	3	6	.	.	.	9
Aiding Inducing/Causing An Offense	.	5	3	1	.	.	.	1	.	.	.	10
Arson	.	1	4	3	.	.	8
Assisting A Criminal	.	.	.	1	1
Attempt To Commit Felony	.	13	1	.	2	1	.	17
Auto Theft, Receiving Stolen Auto Parts	.	.	.	1	2	3
Battery	.	2	2	2	2	.	.	1	.	23	1	33
Battery By Bodily Waste	1	1
Battery To A Child Causing Death	.	1	1
Burglary	.	2	18	2	12	8	.	42
Child Molesting	.	.	2	1	.	.	3
Conspiracy	.	4	4	.	.	.	2	1	.	2	.	13
Controlled Substance Registration	.	.	.	2	1	3
Corrupt Business Influence	.	.	.	2	2
Criminal Confinement	.	.	2	1	1	.	4
Criminal Recklessness	.	.	.	1	2	.	3
Dealing In Cocaine Or Narcotic Drug	.	11	22	.	.	.	4	.	6	7	.	50
Dealing In Methamphetamine	.	16	21	.	.	.	3	4	4	12	.	60
Dealing In Schedule IV Controlled Substance	.	.	2	3	5
Dealing Possessing Look-Alike Substance	.	.	.	1	1
Dealng A Sched I, Ii, Iii Control Subst	1	.	1	.	.	2
Dealng In a Schedule I, II, or III Controlled Substance	.	7	26	2	.	35
Domestic Battery	1	1	2
Escape	2	1	3
Fail To Return To Accident Resulting in Serious Injury	1	.	.	.	1
Failure To Return Lawful Detention/Escape	.	.	.	1	1
Forgery,Counterfeiting,Application Fraud	.	.	.	18	1	19
Fraud	2	1	3
Fraud On A Financial Institution	.	.	.	1	1
Handgun Violation	.	.	.	1	1
Identity Deception	2	2
Incest	.	.	1	1
Intimidation	4	.	4

INDIANA DEPARTMENT OF CORRECTION
ADULT OFFENDERS
by Most Serious Offense
for January 2017
snapshot date: 01/01/2017

Indiana Women's Prison												
Most Serious Offense	Murder	FA	FB	FC	FD	F1	F2	F3	F4	F5	F6	Total
Maintaining Common Nuisance	3	2	5
Murder	71	71
Neglect Of A Dependent	.	.	8	3	1	.	12
Neglect Of A Dependent Resulting in Serious Injury	5	.	.	.	5
Neglect Of Dependent Resulting In Death	.	12	.	.	.	4	16
Operate Vehicle After Suspended For Life	.	.	.	2	1	.	3
Operating Vehicle Intoxicated Resulting in Death	.	.	2	1	1	1	.	5
Operating Vehicle Intoxicated Resulting in Serious Bodily Injury	1	.	1
Possess Chemical Reagents Or Precursors	.	.	.	1	1
Possess Of Precursors	1	1
Possession Of A Controlled Substance	.	.	.	2	3	5
Possession Of Cocaine Or Narcotic Drug	.	1	2	2	1	3	1	10
Possession Of Marijuana, Hash, Hash Oil	1	1
Possession Of Methamphetamine	.	.	4	1	5	.	.	1	.	2	2	15
Possession Of Paraphernalia	2	2
Possession Of Syringes Or Needles	1	.	1
Promoting Prostitution	.	.	.	1	1
Promoting Prostitution Under Age 18	.	.	1	1
Reckless Homicide	.	.	.	2	1	.	3
Resisting Law Enforcement	2	2
Robbery	.	4	19	2	.	.	3	13	.	3	.	44
Stalking	.	.	.	1	1
Theft,Receiving Stolen Property	9	11	20
Trafficking With An Inmate	.	.	.	2	1	.	3
Unlawful Firearm Poss By Serious Felon	.	.	2	2
Violation Of Custody Order	1	1
Voluntary Manslaughter	.	7	1	.	.	.	1	9
Welfare Fraud	.	.	.	1	1	2
Total	71	86	150	60	35	4	14	33	28	80	28	589

INDIANA DEPARTMENT OF CORRECTION
ADULT OFFENDERS
by Most Serious Offense
for January 2017
snapshot date: 01/01/2017

Madison Correctional Facility												
Most Serious Offense	Murder	FA	FB	FC	FD	F1	F2	F3	F4	F5	F6	Total
Accident Fail To Stop Reulting in Serious Injury or Death	1	.	.	1
Aiding Inducing/Causing An Offense	.	.	6	1	1	5	.	13
Arson	1	.	.	1	1	.	.	3
Auto Theft, Receiving Stolen Auto Parts	1	1	2
Battery	5	.	5
Burglary	.	1	20	6	26	3	.	56
Conspiracy	.	4	5	2	.	.	1	1	3	3	.	19
Corrupt Business Influence	.	.	.	2	5	.	7
Criminal Recklessness	1	1
Dealing In Cocaine Or Narcotic Drug	.	5	39	.	.	.	6	4	9	27	.	90
Dealing In Methamphetamine	.	6	65	.	.	.	3	5	17	21	.	117
Dealing In Schedule IV Controlled Substance	.	.	4	2	6
Dealing Possessing Look-Alike Substance	.	.	.	1	4	.	5
Dealng A Sched I, Ii, Iii Control Subst	5	.	.	5
Dealng In a Schedule I, II, or III Controlled Substance	.	6	39	3	1	49
Domestic Battery	1	1
Forgery,Counterfeiting,Application Fraud	.	.	.	24	1	25
Fraud	1	1	2
Fraud On A Financial Institution	.	.	.	3	1	.	4
Identity Deception	1	1
Maintaining Common Nuisance	3	3
Murder	5	5
Neglect Of A Dependent	.	.	2	3	5
Neglect Of Dependent Resulting In Death	.	1	1
Non Support Of Dependent Child	.	.	.	1	1
Operate Vehicle After Suspended For Life	.	.	.	3	5	.	8
Operating Vehicle Intoxicated Resulting in Death	.	.	1	1
Operating Vehicle Intoxicated Resulting in Serious Bodily Injury	.	.	.	2	2
Operating Vehicle While Intoxicated-Previous Conviction	2	1	1	4
Operating Vehicle-Habit Traffic Violator	2	2
Possess Chemical Reagents Or Precursors	.	.	.	3	3
Possess Of Precursors	1	1
Possession Of A Controlled Substance	.	.	.	2	6	8

INDIANA DEPARTMENT OF CORRECTION
 ADULT OFFENDERS
 by Most Serious Offense
 for January 2017
 snapshot date: 01/01/2017

Madison Correctional Facility												
Most Serious Offense	Murder	FA	FB	FC	FD	F1	F2	F3	F4	F5	F6	Total
Possession Of Cocaine Or Narcotic Drug	.	2	2	1	3	.	.	.	2	4	3	17
Possession Of Methamphetamine	.	.	5	2	2	.	.	1	.	2	2	14
Possession Of Syringes Or Needles	1	2	4	7
Possession Or Use Of Legend Drug	2	2
Promoting Prostitution	.	.	.	1	1
Robbery	.	1	7	2	.	.	.	4	.	4	.	18
Theft,Receiving Stolen Property	9	9	18
Trafficking With An Inmate	.	.	.	2	7	.	9
Unlawful Firearm Poss By Serious Felon	.	.	1	1
Voluntary Manslaughter	.	3	3
Welfare Fraud	.	.	.	3	3
Total	5	29	196	66	29	.	10	16	65	102	31	549

INDIANA DEPARTMENT OF CORRECTION
ADULT OFFENDERS
by Most Serious Offense
for January 2017
snapshot date: 01/01/2017

Miami Correctional Facility												
Most Serious Offense	Murder	FA	FB	FC	FD	F1	F2	F3	F4	F5	F6	Total
Accident Fail To Stop Reulting in Serious Injury or Death	.	.	3	1	.	4
Aggravated Battery	.	.	76	33	.	.	.	109
Aiding Inducing/Causing An Offense	.	9	17	1	.	.	4	4	2	.	.	37
Aiding in Manufacture of Sch II Controlled Substance	1	1
Arson	.	3	10	3	.	.	16
Assisting A Criminal	.	.	.	1	1	2
Attempt To Commit Felony	.	95	25	4	.	17	1	5	.	1	.	148
Auto Theft, Receiving Stolen Auto Parts	.	.	.	4	1	5
Battery	.	4	16	22	1	.	.	3	.	28	2	76
Battery To A Child Causing Death	.	2	2
Burglary	.	56	283	50	.	1	13	.	30	13	.	446
Carjacking	.	.	13	13
Carrying Handgun Without License	.	.	.	5	5
Causing Suicide	.	.	1	1
Check Fraud	1	1
Child Molesting	.	103	29	4	.	32	.	5	4	.	.	177
Conspiracy	.	24	19	1	.	1	5	.	2	1	.	53
Controlled Substance Registration	.	.	.	1	1
Corrupt Business Influence	.	.	.	3	1	.	4
Criminal Confinement	.	.	35	3	1	.	.	11	.	2	.	52
Criminal Deviate Conduct	.	6	3	9
Criminal Recklessness	.	.	.	2	2	4	.	8
Deal Sub Represented To Be Controlled Sub	1	1
Dealing In Cocaine Or Narcotic Drug	.	280	127	.	.	.	26	4	4	11	.	452
Dealing In Marijuana, Hash, or Hash Oil	.	.	.	1	1
Dealing In Methamphetamine	.	71	99	.	.	.	22	5	11	21	.	229
Dealing In Schedule IV Controlled Substance	.	.	1	1
Dealing Possessing Look-Alike Substance	.	.	.	1	1
Dealng A Sched I, Ii, Iii Control Subst	1	1
Dealng In a Schedule I, II, or III Controlled Substance	.	27	57	1	.	85
Domestic Battery	2	1	3
Dumping Controlled Substance Waste	1	1
Escape	4	5	9

INDIANA DEPARTMENT OF CORRECTION
ADULT OFFENDERS
by Most Serious Offense
for January 2017
snapshot date: 01/01/2017

Miami Correctional Facility												
Most Serious Offense	Murder	FA	FB	FC	FD	F1	F2	F3	F4	F5	F6	Total
Fail To Stop After Accident - Operating Vehicle Intoxicated	.	.	1	1
Failure To Register As A Sex Offender	1	.	1
Failure To Return Lawful Detention/Escape	.	.	3	11	1	15
Firearm Within 1 Mile School Property Without License	.	.	.	2	2
Forgery,Counterfeiting,Application Fraud	.	.	.	22	22
Fraud On A Financial Institution	2	.	2
Handgun Violation (Felony Within 15 Yrs)	.	.	.	1	17	.	18
Identity Deception	2	1	3
Incest	.	.	2	2
Intimidation	.	.	.	4	1	1	.	6
Invasion Of Privacy	1	1
Kidnapping	.	9	4	1	.	.	.	14
Murder	189	189
Neglect Of A Dependent	.	.	8	1	9
Neglect Of A Dependent Resulting in Serious Injury	6	.	.	.	6
Neglect Of Dependent Resulting In Death	.	7	.	.	.	1	8
Non Support Of Dependent Child	.	.	.	2	1	3
Obliterating Handgun I.D.	.	.	.	1	1
Obstruction Of Justice	1	1	2
Operate Vehicle After Suspended For Life	.	.	.	4	16	.	20
Operating Vehicle Intoxicated Resulting in Death	.	.	8	1	1	2	.	12
Operating Vehicle Intoxicated Resulting in Serious Bodily Injury	1	1
Operating Vehicle While Intoxicated-Previous Conviction	1	2	3
Operating Vehicle-Habit Traffic Violator	1	2	3
Possess Chemical Reagents Or Precursors	.	.	.	2	2
Possess Destructive Device Or Explosive	1	1
Possess Methamphetamine Without Pay Tax	1	1
Possess Of Precursors	1	1
Possession Of A Controlled Substance	.	.	.	6	2	8
Possession Of Cocaine Or Narcotic Drug	.	20	17	7	2	.	.	1	1	2	2	52
Possession Of Dangerous Device	2	.	.	2
Possession Of Marijuana, Hash, Hash Oil	1	1
Possession Of Methamphetamine	.	3	10	1	2	.	.	.	1	1	2	20

INDIANA DEPARTMENT OF CORRECTION
ADULT OFFENDERS
by Most Serious Offense
for January 2017
snapshot date: 01/01/2017

Miami Correctional Facility												
Most Serious Offense	Murder	FA	FB	FC	FD	F1	F2	F3	F4	F5	F6	Total
Possession Of Syringes Or Needles	1	1	.	2
Prisoner Poss. Dangerous Device/Material	.	.	2	2
Rape	.	14	4	.	.	8	.	4	.	.	.	30
Reckless Homicide	.	.	.	2	1	.	3
Residential Entry	2	1	3
Resisting Law Enforcement	.	.	2	1	2	1	2	8
Robbery	.	50	258	25	.	.	13	65	.	8	.	419
Sexual Misconduct With A Minor	.	1	8	1	.	.	10
Stalking	.	.	2	3	1	.	6
Strangulation	1	2	3
Theft,Receiving Stolen Property	9	7	16
Trafficking With An Inmate	.	.	.	1	2	.	3
Unlawful Firearm Poss By Serious Felon	.	.	89	13	.	.	102
Voluntary Manslaughter	.	75	9	.	.	.	8	92
Total	189	859	1,237	200	38	60	98	147	75	144	38	3,085

INDIANA DEPARTMENT OF CORRECTION
ADULT OFFENDERS
by Most Serious Offense
for January 2017
snapshot date: 01/01/2017

New Castle Correctional Facility												
Most Serious Offense	Murder	FA	FB	FC	FD	F1	F2	F3	F4	F5	F6	Total
Accident Fail To Stop Reulting in Serious Injury or Death	1	.	1
Aggravated Battery	.	.	14	3	.	.	.	17
Aiding Inducing/Causing An Offense	.	1	4	1	3	.	9
Aiding in Manufacture of Sch II Controlled Substance	1	1
Arson	.	.	7	2	.	.	9
Attempt To Commit Felony	.	51	28	2	.	.	.	9	3	5	.	98
Auto Theft, Receiving Stolen Auto Parts	.	.	.	3	3	6
Battery	.	2	5	11	.	.	.	1	.	18	1	38
Burglary	.	26	98	26	.	.	1	1	19	9	.	180
Carjacking	.	.	2	2
Check Fraud	1	1
Child Exploitation	.	.	.	11	1	10	.	22
Child Molesting	.	558	400	177	.	2	.	39	75	.	.	1,251
Child Seduction	.	.	.	3	2	2	.	7
Child Solicitation	.	.	.	10	3	.	.	.	5	21	.	39
Conspiracy	.	4	8	3	15
Corrupt Business Influence	.	.	.	1	1	.	2
Criminal Confinement	.	.	14	7	.	.	.	2	.	6	.	29
Criminal Deviate Conduct	.	44	84	128
Criminal Recklessness	.	.	.	2	1	.	3
Dangerous Control Of A Handgun	1	.	1
Dealing In Cocaine Or Narcotic Drug	.	16	29	2	5	24	.	76
Dealing In Marijuana, Hash, or Hash Oil	1	1
Dealing In Methamphetamine	.	3	39	.	.	.	1	1	4	16	.	64
Dealing In Sched V Controlled Substance	1	.	1
Dealing In Schedule IV Controlled Substance	.	.	2	2	4
Dealing In a Schedule I, II, or III Controlled Substance	.	6	30	2	.	38
Disarming A Law Enforcement Officer	2	.	2
Distribute Destructive Device To Minor	.	.	1	1
Domestic Battery	1	1
Escape	1	2	3
Fail To Return To Accident Resulting in Serious Injury	1	.	.	.	1
Failure To Register As A Sex Offender	.	.	.	8	5	22	2	37

INDIANA DEPARTMENT OF CORRECTION
ADULT OFFENDERS
by Most Serious Offense
for January 2017
snapshot date: 01/01/2017

New Castle Correctional Facility												
Most Serious Offense	Murder	FA	FB	FC	FD	F1	F2	F3	F4	F5	F6	Total
Failure To Return Lawful Detention/Escape	.	.	.	1	2	3
Firearm Within 1 Mile School Property Without License	.	.	.	2	2
Forgery,Counterfeiting,Application Fraud	.	.	.	12	12
Fraud	1	1
Fraud On A Financial Institution	.	.	.	2	1	.	3
Handgun Violation (Felony Within 15 Yrs)	9	.	9
Human Sexual Trafficking	2	1	.	.	3
Incest	.	.	18	15	1	4	.	38
Intimidation	.	.	.	3	1	.	4
Invasion Of Privacy	1	1
Kidnapping	.	12	12
Maintaining Common Nuisance	1	1
Murder	88	88
Neglect Of A Dependent	.	.	.	1	1	1	.	3
Neglect Of Dependent Resulting In Death	.	1	1
Non Support Of Dependent Child	.	.	.	7	3	10
Obliterating Handgun I.D.	1	.	1
Obstruction Of Justice	1	1
Operate Vehicle After Suspended For Life	.	.	.	5	11	.	16
Operating Vehicle Intoxicated Resulting in Death	.	.	5	5
Operating Vehicle While Intoxicated-Previous Conviction	3	3
Operating Vehicle-Habit Traffic Violator	1	1
Opererating Vehicle While Intoxicated - Endangering Person	1	1
Opererating Vehicle While Intoxicated - Prior Conviction	2	2
Possess Chemical Reagents Or Precursors	.	.	.	2	2
Possess Of Precursors	1	1
Possession Of A Controlled Substance	.	.	.	2	2
Possession Of Child Pornography	5	5
Possession Of Cocaine Or Narcotic Drug	.	1	6	2	1	1	1	12
Possession Of Dangerous Device	1	.	.	1
Possession Of Methamphetamine	.	.	4	.	3	.	.	.	1	1	.	9
Possession Of Syringes Or Needles	.	.	.	1	2	.	3
Prisoner Poss. Dangerous Device/Material	.	.	1	1

INDIANA DEPARTMENT OF CORRECTION
ADULT OFFENDERS
by Most Serious Offense
for January 2017
snapshot date: 01/01/2017

New Castle Correctional Facility												
Most Serious Offense	Murder	FA	FB	FC	FD	F1	F2	F3	F4	F5	F6	Total
Promoting Prostitution Under Age 18	.	.	3	3
Public Indecency	2	2
Rape	.	89	113	26	.	.	.	228
Residential Entry	2	1	3
Robbery	.	17	74	6	.	.	.	7	.	10	.	114
Sexual Battery	.	.	.	1	6	.	.	.	3	.	5	15
Sexual Misconduct Gov Employee W/Detainee	.	.	.	1	1
Sexual Misconduct With A Minor	.	.	218	57	2	.	.	.	44	30	.	351
Stalking	1	.	1
Theft,Receiving Stolen Property	8	5	13
Trafficking With An Inmate	.	.	.	1	1	.	2
Unlawful Firearm Poss By Serious Felon	.	.	15	3	.	.	18
Vicarious Sexual Gratification	.	.	4	2	1	.	.	7
Voluntary Manslaughter	.	8	2	10
Voyeurism	1	1	2
Total	88	839	1,228	389	50	2	2	94	169	220	34	3,115

INDIANA DEPARTMENT OF CORRECTION
ADULT OFFENDERS
by Most Serious Offense
for January 2017
snapshot date: 01/01/2017

Pendleton Correctional Facility												
Most Serious Offense	Murder	FA	FB	FC	FD	F1	F2	F3	F4	F5	F6	Total
Accident Fail To Stop Reulting in Serious Injury or Death	1	.	1
Aggravated Battery	.	.	19	5	.	.	.	24
Aiding Inducing/Causing An Offense	.	5	5	1	.	1	12
Arson	.	4	3	1	.	.	8
Attempt To Commit Felony	.	79	9	1	.	4	.	.	.	2	.	95
Auto Theft, Receiving Stolen Auto Parts	.	.	.	2	2	1	2	7
Battery	.	3	4	18	1	.	2	2	.	6	.	36
Battery To A Child Causing Death	.	2	2
Burglary	.	39	82	18	.	3	2	.	9	7	.	160
Carjacking	.	.	6	6
Check Fraud	.	.	.	1	1
Child Molesting	.	211	10	3	.	9	.	1	.	.	.	234
Conspiracy	.	10	5	15
Corrupt Business Influence	.	.	.	1	1
Criminal Confinement	.	.	17	1	.	.	.	2	.	3	.	23
Criminal Deviate Conduct	.	32	3	35
Criminal Recklessness	.	.	.	2	1	3
Dealing In Cocaine Or Narcotic Drug	.	84	32	.	.	.	2	1	.	3	.	122
Dealing In Marijuana, Hash, or Hash Oil	2	.	2
Dealing In Methamphetamine	.	11	23	.	.	.	2	1	1	6	.	44
Dealng In a Schedule I, II, or III Controlled Substance	.	5	8	13
Escape	1	.	1
Failure To Register As A Sex Offender	1	.	1
Failure To Return Lawful Detention/Escape	.	.	.	2	2
Firearm Within 1 Mile School Property Without License	.	.	.	1	1
Forgery,Counterfeiting,Application Fraud	.	.	.	7	7
Fraud On A Financial Institution	.	.	.	2	2
Habitual Offender Substance Abuse	1	1
Handgun Violation (Felony Within 15 Yrs)	3	.	3
Incest	.	.	1	1	.	.	2
Intimidation	.	.	.	1	1
Involuntary Manslaughter	.	.	.	1	1
Kidnapping	.	12	12

INDIANA DEPARTMENT OF CORRECTION
ADULT OFFENDERS
by Most Serious Offense
for January 2017
snapshot date: 01/01/2017

Pendleton Correctional Facility												
Most Serious Offense	Murder	FA	FB	FC	FD	F1	F2	F3	F4	F5	F6	Total
Murder	520	520
Neglect Of A Dependent	.	.	2	1	3
Neglect Of Dependent Resulting In Death	.	4	4
Non Support Of Dependent Child	1	1	1	3
Operate Vehicle After Suspended For Life	.	.	.	1	8	.	9
Operating Vehicle Intoxicated Resulting in Death	.	.	1	1	.	.	2
Operating Vehicle While Intoxicated-Previous Conviction	3	1	4
Operating Vehicle-Habit Traffic Violator	1	1
Opererating Vehicle While Intoxicated - Prior Conviction	1	1
Possession Of Cocaine Or Narcotic Drug	.	4	1	.	3	2	10
Possession Of Methamphetamine	.	.	2	.	1	.	.	1	.	2	1	7
Prisoner Poss. Dangerous Device/Material	.	.	1	1
Rape	.	43	9	.	.	4	.	1	.	.	.	57
Reckless Homicide	.	.	.	1	1
Residential Entry	1	1
Resisting Law Enforcement	.	.	1	1	.	2
Robbery	.	34	98	6	.	.	5	11	.	4	.	158
Sexual Misconduct With A Minor	.	.	7	1	8
Stalking	1	.	.	1
Strangulation	1	1
Theft,Receiving Stolen Property	7	3	10
Unlawful Firearm Poss By Serious Felon	.	.	23	3	.	.	26
Voluntary Manslaughter	.	36	6	.	.	.	3	45
Total	520	618	378	72	21	21	16	25	17	52	13	1,753

INDIANA DEPARTMENT OF CORRECTION
ADULT OFFENDERS
by Most Serious Offense
for January 2017
snapshot date: 01/01/2017

Plainfield Correctional Facility												
Most Serious Offense	Murder	FA	FB	FC	FD	F1	F2	F3	F4	F5	F6	Total
Aggravated Battery	.	.	12	10	.	.	.	22
Aiding Inducing/Causing An Offense	.	2	6	1	2	3	.	14
Arson	.	.	5	.	1	.	.	.	5	.	.	11
Assisting A Criminal	.	.	.	1	1
Attempt To Commit Felony	.	19	6	1	1	.	.	2	.	3	.	32
Auto Theft, Receiving Stolen Auto Parts	.	.	.	3	2	7	12
Battery	.	.	2	26	.	.	.	1	1	28	3	61
Battery To A Child Causing Death	.	1	1
Burglary	.	8	110	27	.	.	4	.	49	28	.	226
Carjacking	.	.	5	5
Carrying Handgun Without License	.	.	.	3	3
Check Fraud	.	.	.	1	1
Child Molesting	.	9	2	3	14
Child Solicitation	.	.	1	1
Conspiracy	.	11	9	2	.	.	.	1	1	2	.	26
Corrupt Business Influence	.	.	.	2	1	.	3
Criminal Confinement	.	.	8	3	1	.	.	2	.	3	.	17
Criminal Deviate Conduct	.	.	2	2
Criminal Recklessness	.	.	.	4	3	.	7
Deal Sub Represented To Be Controlled Sub	1	1
Deal Substance Represented To Be Controlled Substance	1	1
Dealing In A Schedule V Controlled Substance	.	.	1	1
Dealing In Cocaine Or Narcotic Drug	.	40	102	.	.	.	7	5	18	15	.	187
Dealing In Marijuana, Hash, or Hash Oil	.	.	.	2	1	2	.	5
Dealing In Methamphetamine	.	2	58	.	.	.	1	4	15	23	.	103
Dealing In Schedule IV Controlled Substance	.	.	1	2	2	.	5
Dealing Possessing Look-Alike Substance	.	.	.	1	1	.	2
Dealng A Sched I, Ii, Iii Control Subst	1	1	2	.	.	4
Dealng In a Schedule I, II, or III Controlled Substance	.	2	45	47
Disarming A Law Enforcement Officer	1	.	1
Domestic Battery	2	2
Driving While Intoxicated	1	1
Escape	5	4	9

INDIANA DEPARTMENT OF CORRECTION
ADULT OFFENDERS
by Most Serious Offense
for January 2017
snapshot date: 01/01/2017

Plainfield Correctional Facility												
Most Serious Offense	Murder	FA	FB	FC	FD	F1	F2	F3	F4	F5	F6	Total
Fail To Stop After Accident - Operating Vehicle Intoxicated	.	.	1	1
Failure To Register As A Sex Offender	.	.	.	4	1	16	.	21
Failure To Return Lawful Detention/Escape	.	.	.	4	1	5
Firearm Within 1 Mile School Property Without License	.	.	.	1	1
Forgery,Counterfeiting,Application Fraud	.	.	.	14	1	15
Fraud On A Financial Institution	.	.	.	2	7	.	9
Handgun Violation (Felony Within 15 Yrs)	.	.	.	1	18	.	19
Home Improvement Fraud Offenses	1	1
Intimidation	.	.	.	4	2	6	3	15
Invasion Of Privacy	1	1
Kidnapping	.	2	1	.	.	.	3
Maintaining Common Nuisance	1	1
Murder	37	37
Neglect Of A Dependent	.	.	2	1	2	.	5
Neglect Of A Dependent Resulting in Serious Injury	3	.	.	.	3
Non Support Of Dependent Child	.	.	.	10	1	1	.	12
Obliterating Handgun I.D.	.	.	.	1	1
Operate Vehicle After Suspended For Life	.	.	.	13	28	.	41
Operating Vehicle Intoxicated Resulting in Death	.	.	3	4	.	.	7
Operating Vehicle Intoxicated Resulting in Serious Bodily Injury	2	.	2
Operating Vehicle While Intoxicated-Previous Conviction	7	4	11
Operating Vehicle With Schedule I in Body - Causing Death	.	.	.	1	1
Operating Vehicle-Habit Traffic Violator	.	.	.	1	3	3	7
Opererating Vehicle - Schedule I Or II Control Substance	2	2
Opererating Vehicle While Intoxicated - Prior Conviction	1	1
Possess Chemical Reagents Or Precursors	.	.	.	2	1	.	3
Possess Of Precursors	1	1
Possession Of A Controlled Substance	.	.	.	2	4	6
Possession Of Cocaine Or Narcotic Drug	.	3	15	4	2	.	.	1	1	5	6	37
Possession Of Dangerous Device	1	.	1
Possession Of Marijuana, Hash, Hash Oil	2	2
Possession Of Methamphetamine	.	.	3	5	2	.	.	5	6	4	3	28
Possession Of Syringes Or Needles	1	1

INDIANA DEPARTMENT OF CORRECTION
ADULT OFFENDERS
by Most Serious Offense
for January 2017
snapshot date: 01/01/2017

Plainfield Correctional Facility												
Most Serious Offense	Murder	FA	FB	FC	FD	F1	F2	F3	F4	F5	F6	Total
Prisoner Poss. Dangerous Device/Material	.	.	.	1	1
Rape	.	1	1	2
Reckless Homicide	.	.	.	3	2	.	5
Resisting Law Enforcement	2	4	6
Robbery	.	4	69	16	.	.	.	26	.	17	.	132
Sale Of Unregistered Security	.	.	.	1	1
Stalking	.	.	.	3	1	2	.	6
Strangulation	2	2	4
Theft,Receiving Stolen Property	19	3	12	34
Trafficking With An Inmate	.	.	.	2	1	.	3
Unlawful Firearm Poss By Serious Felon	.	.	32	14	.	.	46
Voluntary Manslaughter	.	9	3	12
Total	37	113	504	178	63	.	13	62	119	236	56	1,381

INDIANA DEPARTMENT OF CORRECTION
ADULT OFFENDERS
by Most Serious Offense
for January 2017
snapshot date: 01/01/2017

Putnamville Correctional Facility													
Most Serious Offense	Murder	FA	FB	FC	FD	F1	F2	F3	F4	F5	F6	HO	Total
Accident Fail To Stop Reulting in Serious Injury or Death	1	.	.	1
Aggravated Battery	.	.	18	14	32
Aiding Inducing/Causing An Offense	.	1	4	1	.	.	1	.	2	2	.	.	11
Arson	.	1	8	5	.	.	.	14
Assisting A Criminal	.	.	.	1	1
Assisting Suicide	.	.	.	1	1
Attempt To Commit Felony	.	24	8	4	1	.	1	3	.	5	1	.	47
Auto Theft, Receiving Stolen Auto Parts	.	.	.	8	2	9	.	19
Battery	.	.	3	21	.	.	.	3	.	67	4	.	98
Battery By Bodily Waste	.	.	.	1	1	2
Bribery	1	.	.	1
Burglary	.	12	172	52	.	.	4	4	90	44	.	.	378
Carjacking	.	.	5	5
Carrying Handgun Without License	.	.	.	5	5
Check Fraud	.	.	.	1	1
Child Molesting	.	3	5	3	11
Child Seduction	1	.	.	1
Conspiracy	.	5	13	2	.	.	2	.	.	3	.	.	25
Conversion	2	.	.	2
Corrupt Business Influence	.	.	.	1	6	.	.	7
Criminal Confinement	.	.	20	4	1	.	.	9	.	6	.	.	40
Criminal Recklessness	.	.	.	2	6	.	.	8
Deal Sub Represented To Be Controled Sub	1	.	1
Dealing In Cocaine Or Narcotic Drug	.	32	135	.	.	.	14	10	16	14	.	.	221
Dealing In Marijuana, Hash, or Hash Oil	.	.	.	1	1	3	1	.	6
Dealing In Methamphetamine	.	4	86	.	.	.	15	18	16	16	.	.	155
Dealing In Schedule IV Controlled Substance	.	.	1	1	2
Dealing Possessing Look-Alike Substance	.	.	.	1	2	.	.	3
Dealng A Sched I, Ii, Iii Control Subst	1	2	3
Dealing In a Schedule I, II, or III Controlled Substance	.	5	39	44
Disarming A Law Enforcement Officer	1	.	.	1
Domestic Battery	2	2	4	.	8
Escape	1	7	7	.	15
Fail To Return To Accident Resulting in Serious Injury	1	1
Failure To Appear	1	.	1

INDIANA DEPARTMENT OF CORRECTION
ADULT OFFENDERS
by Most Serious Offense
for January 2017
snapshot date: 01/01/2017

Putnamville Correctional Facility													
Most Serious Offense	Murder	FA	FB	FC	FD	F1	F2	F3	F4	F5	F6	HO	Total
Failure To Register As A Sex Offender	.	.	.	7	2	24	1	.	34
Failure To Return Lawful Detention/Escape	.	.	.	5	1	6
Firearm Within 1 Mile School Property Without License	.	.	.	11	11
Forgery,Counterfeiting,Application Fraud	.	.	.	30	3	.	33
Fraud	1	.	1
Fraud On A Financial Institution	.	.	.	2	5	.	.	7
Habitual Offender Substance Abuse	1	1
Handgun Violation	.	.	.	1	1
Handgun Violation (Felony Within 15 Yrs)	.	.	.	3	20	.	.	23
Identity Deception	.	.	.	1	1
Intimidation	.	.	.	4	2	7	1	.	14
Kidnapping	.	4	1	5
Maintaining Common Nuisance	1	3	.	4
Murder	31	31
Neglect Of A Dependent	.	.	.	1	1	1	.	3
Neglect Of A Dependent Resulting in Serious Injury	2	2
Neglect Of Dependent Resulting In Death	.	1	1
Non Support Of Dependent Child	.	.	.	9	3	1	.	.	13
Obliterating Handgun I.D.	1	.	.	1
Obstruction Of Justice	1	.	1
Operate Vehicle After Suspended For Life	.	.	.	14	28	.	.	42
Operating Vehicle Intoxicated Resulting in Death	.	.	2	2	3	4	.	.	11
Operating Vehicle Intoxicated Resulting in Serious Bodily Injury	.	.	.	1	1	2	1	.	5
Operating Vehicle While Intoxicated-Previous Conviction	2	2
Operating Vehicle-Habit Traffic Violator	1	1	.	2
Opererating Vehicle While Intoxicated - Endangering Person	2	2
Opererating Vehicle While Intoxicated - Prior Conviction	5	.	5
Possess Chemical Reagents Or Precursors	.	.	.	1	1	.	.	2
Possess Of Precursors	1	1	.	2
Possession Of A Controlled Substance	.	.	.	1	4	5
Possession Of Cocaine Or Narcotic Drug	.	1	6	6	2	.	.	4	5	8	2	.	34
Possession Of Dangerous Device	1	.	.	.	1
Possession Of Marijuana, Hash, Hash Oil	2	2
Possession Of Methamphetamine	.	.	6	4	2	.	.	4	2	8	4	.	30
Possession Of Paraphernalia	2	2

INDIANA DEPARTMENT OF CORRECTION
ADULT OFFENDERS
by Most Serious Offense
for January 2017
snapshot date: 01/01/2017

Putnamville Correctional Facility													
Most Serious Offense	Murder	FA	FB	FC	FD	F1	F2	F3	F4	F5	F6	HO	Total
Possession Of Syringes Or Needles	4	1	1	.	6
Possession Or Use Of Legend Drug	.	.	.	1	1
Rape	.	1	1	2
Reckless Homicide	.	.	.	2	1	.	.	3
Residential Entry	5	.	5
Resisting Law Enforcement	2	.	.	1	.	3	.	.	6
Robbery	.	5	111	16	.	.	4	83	.	31	.	.	250
Sale Of Unregistered Security	.	.	.	1	1
Sexual Misconduct With A Minor	.	.	1	1	.	.	.	2
Stalking	.	.	.	3	2	1	.	.	6
Strangulation	3	3	.	6
Theft,Receiving Stolen Property	15	1	21	.	37
Trafficking With An Inmate	.	.	.	1	1	.	.	2
Unlawful Firearm Poss By Serious Felon	.	.	74	31	.	.	.	105
Voluntary Manslaughter	.	17	2	.	.	.	4	23
Total	31	116	720	237	60	.	46	159	175	338	83	1	1,966

INDIANA DEPARTMENT OF CORRECTION
ADULT OFFENDERS
by Most Serious Offense
for January 2017
snapshot date: 01/01/2017

Reception Diagnostic Center													
Most Serious Offense	Murder	FA	FB	FC	FD	F1	F2	F3	F4	F5	F6	HO	Total
Aggravated Battery	.	.	1	3	4
Aiding Inducing/Causing An Offense	4	.	.	4
Aiding in Manufacture of Sch II Controlled Substance	1	.	1
Arson	.	.	1	1
Attempt To Commit Felony	.	1	1	.	.	1	.	1	.	1	.	.	5
Auto Theft, Receiving Stolen Auto Parts	.	.	.	1	2	2	.	5
Battery	.	.	.	5	16	1	.	22
Bribery	.	.	.	1	1
Burglary	.	3	28	9	.	1	1	.	25	13	.	.	80
Carrying Handgun Without License	.	.	.	2	2
Child Exploitation	.	.	.	1	1
Child Molesting	.	6	3	3	.	8	.	3	5	.	.	.	28
Child Solicitation	1	.	.	.	1
Conspiracy	.	1	1	1	1	2	.	.	6
Corrupt Business Influence	.	.	.	1	1	.	.	2
Criminal Confinement	.	.	4	1	.	.	.	2	.	2	1	.	10
Criminal Deviate Conduct	.	.	2	2
Criminal Recklessness	.	.	.	1	1	1	.	.	3
Deal Sub Represented To Be Controlled Sub	1	.	1
Dealing In Cocaine Or Narcotic Drug	.	6	10	1	.	.	4	3	4	9	.	.	37
Dealing In Marijuana, Hash, or Hash Oil	1	.	.	1
Dealing In Methamphetamine	.	.	8	.	.	.	3	3	3	9	.	.	26
Dealing Possessing Look-Alike Substance	2	.	.	2
Dealng In a Schedule I, II, or III Controlled Substance	.	.	5	5
Disarming A Law Enforcement Officer	1	.	.	1
Domestic Battery	3	1	.	4
Escape	2	5	.	7
Fail To Return To Accident Resulting in Serious Injury	1	1
Failure To Appear	1	.	1
Failure To Register As A Sex Offender	9	.	.	9
Failure To Return Lawful Detention/Escape	2	2
Firearm Within 1 Mile School Property Without License	.	.	.	1	1
Forgery,Counterfeiting,Application Fraud	.	.	.	7	4	.	11
Fraud On A Financial Institution	.	.	.	2	1	.	.	3
Habitual Offender	1	1

INDIANA DEPARTMENT OF CORRECTION
ADULT OFFENDERS
by Most Serious Offense
for January 2017
snapshot date: 01/01/2017

Reception Diagnostic Center													
Most Serious Offense	Murder	FA	FB	FC	FD	F1	F2	F3	F4	F5	F6	HO	Total
Handgun Violation (Felony Within 15 Yrs)	13	.	.	13
Intimidation	.	.	.	2	5	1	.	8
Kidnapping	1	1
Minor Passenger In Vehicle - Previous Conviction	.	.	.	1	1
Mischief	1	1
Murder	4	4
Neglect Of A Dependent	.	.	1	1	1	1	.	.	4
Neglect Of A Dependent Resulting in Serious Injury	1	1
Neglect Of Dependent Resulting In Death	.	1	1
Non Support Of Dependent Child	.	.	.	11	2	13
OPER VEH .15 OR MORE - PRIOR CONVICTION	1	.	.	1
Obliterating Handgun I.D.	1	.	.	1
Operate Vehicle After Suspended For Life	.	.	.	4	10	.	.	14
Operating Vehicle Intoxicated Resulting in Death	.	.	1	1	1	.	.	3
Operating Vehicle While Intoxicated-Previous Conviction	7	3	.	10
Operating Vehicle-Habit Traffic Violator	1	1	.	2
Opererating Vehicle While Intoxicated - Prior Conviction	3	.	3
Possess Of Precursors	1	.	1
Possession Of A Controlled Substance	3	3
Possession Of Cocaine Or Narcotic Drug	.	.	1	2	2	.	.	.	3	5	7	.	20
Possession Of Methamphetamine	.	.	1	.	3	.	.	.	3	3	1	.	11
Possession Of Syringes Or Needles	2	2	1	.	5
Rape	.	.	1	2	3
Residential Entry	2	5	.	7
Resisting Law Enforcement	2	3	.	5
Robbery	.	1	9	2	.	.	2	21	.	7	.	.	42
Sexual Misconduct With A Minor	.	.	3	2	2	.	.	7
Stalking	1	.	.	1
Strangulation	1	1
Theft,Receiving Stolen Property	15	7	.	22
Trafficking With An Inmate	1	.	.	1
Unlawful Firearm Poss By Serious Felon	.	.	5	11	.	.	.	16
Voluntary Manslaughter	3	3
Total	4	19	86	60	50	10	14	40	59	127	50	1	520

INDIANA DEPARTMENT OF CORRECTION
ADULT OFFENDERS
by Most Serious Offense
for January 2017
snapshot date: 01/01/2017

Rockville Correctional Facility												
Most Serious Offense	Murder	FA	FB	FC	FD	F1	F2	F3	F4	F5	F6	Total
Aggravated Battery	.	.	6	2	.	.	.	8
Aiding Inducing/Causing An Offense	.	4	4	1	2	3	.	14
Arson	.	1	2	1	1	.	.	5
Assisting A Criminal	.	.	.	1	1
Attempt To Commit Felony	.	10	3	.	1	1	2	.	1	4	.	22
Auto Theft, Receiving Stolen Auto Parts	1	2	3
Battery	.	1	1	7	.	.	1	4	.	19	1	34
Battery By Bodily Waste	.	.	.	1	1
Burglary	.	3	47	3	.	1	1	1	17	9	.	82
Carjacking	.	.	2	2
Check Deception	1	1
Child Molesting	.	25	11	3	.	1	.	2	.	.	.	42
Child Solicitation	1	.	1
Conspiracy	.	10	10	.	.	.	2	3	1	2	.	28
Controlled Substance Registration	1	1
Corrupt Business Influence	.	.	.	4	1	.	5
Criminal Confinement	.	.	2	2	.	.	.	4
Criminal Deviate Conduct	.	4	1	5
Dealing In A Schedule V Controlled Substance	.	.	1	1
Dealing In Cocaine Or Narcotic Drug	.	28	44	.	.	.	5	6	8	19	.	110
Dealing In Methamphetamine	.	21	45	.	.	.	13	11	11	21	.	122
Dealing In Schedule IV Controlled Substance	.	.	2	2	3	.	7
Dealing Possessing Look-Alike Substance	1	.	1
Dealng A Sched I, Ii, Iii Control Subst	2	1	2	.	.	5
Dealng In a Schedule I, II, or III Controlled Substance	.	13	46	1	.	60
Domestic Battery	1	1	2
Escape	6	7	13
Fail To Return To Accident Resulting in Serious Injury	1	.	.	.	1
Fail To Stop At An Accident/Sbi/Prior	1	1
Failure To Register As A Sex Offender	.	.	.	1	2	1	4
Failure To Return Lawful Detention/Escape	.	.	.	3	2	5
Forgery,Counterfeiting,Application Fraud	.	.	.	28	2	1	31
Fraud	1	1	2

INDIANA DEPARTMENT OF CORRECTION
ADULT OFFENDERS
by Most Serious Offense
for January 2017
snapshot date: 01/01/2017

Rockville Correctional Facility												
Most Serious Offense	Murder	FA	FB	FC	FD	F1	F2	F3	F4	F5	F6	Total
Fraud On A Financial Institution	.	.	.	2	5	.	7
Handgun Violation (Felony Within 15 Yrs)	3	.	3
Human Sexual Trafficking	.	.	2	2
Identity Deception	1	1
Intimidation	1	.	1
Kidnapping	1	.	1	.	2
Maintaining Common Nuisance	3	2	5
Murder	47	47
Neglect Of A Dependent	.	.	12	2	1	15
Neglect Of A Dependent Resulting in Serious Injury	9	.	.	.	9
Neglect Of Dependent Resulting In Death	.	14	14
Non Support Of Dependent Child	1	1
Operate Vehicle After Suspended For Life	.	.	.	1	8	.	9
Operating Vehicle Intoxicated Resulting in Death	.	.	5	6	.	.	11
Operating Vehicle Intoxicated Resulting in Serious Bodily Injury	1	.	1
Operating Vehicle While Intoxicated-Previous Conviction	7	1	1	9
Operating Vehicle-Habit Traffic Violator	1	1
Opererating Vehicle While Intoxicated - Endangering Person	1	1
Opererating Vehicle While Intoxicated - Prior Conviction	1	1
Possess Chemical Reagents Or Precursors	1	.	1
Possess Of Precursors	2	2	4
Possession Of A Controlled Substance	4	4
Possession Of Cocaine Or Narcotic Drug	.	1	5	3	.	.	.	2	1	4	2	18
Possession Of Methamphetamine	.	1	5	1	4	.	.	4	.	3	6	24
Possession Of Syringes Or Needles	1	3	2	6
Promoting Prostitution Under Age 18	.	.	1	1
Prostitution	1	1
Rape	1	.	.	.	1
Reckless Homicide	.	.	.	2	1	.	3
Residential Entry	1	1	2
Resisting Law Enforcement	1	1
Robbery	.	5	17	3	.	.	2	19	.	9	.	55
Sexual Misconduct With A Minor	.	.	8	2	1	.	11

INDIANA DEPARTMENT OF CORRECTION
 ADULT OFFENDERS
 by Most Serious Offense
 for January 2017
 snapshot date: 01/01/2017

Rockville Correctional Facility												
Most Serious Offense	Murder	FA	FB	FC	FD	F1	F2	F3	F4	F5	F6	Total
Strangulation	1	1
Theft,Receiving Stolen Property	.	.	.	1	18	24	43
Trafficking With An Inmate	.	.	.	3	3	.	6
Unlawful Firearm Poss By Serious Felon	.	.	2	2
Unlawful Medical Practice	1	.	1
Voluntary Manslaughter	.	12	3	.	.	.	2	17
Welfare Fraud	.	.	.	2	2
Total	47	153	287	74	54	3	30	70	52	138	60	968

INDIANA DEPARTMENT OF CORRECTION
ADULT OFFENDERS
by Most Serious Offense
for January 2017
snapshot date: 01/01/2017

South Bend Community Re-Entry Center												
Most Serious Offense	Murder	FA	FB	FC	FD	F1	F2	F3	F4	F5	F6	Total
Aggravated Battery	.	.	1	1
Attempt To Commit Felony	.	1	2	3
Battery	1	.	1
Burglary	.	2	9	4	2	3	.	20
Carrying Handgun Without License	.	.	.	1	1
Conspiracy	.	.	3	3
Criminal Confinement	.	.	1	1
Dealing In Cocaine Or Narcotic Drug	.	3	6	9
Dealing In Methamphetamine	.	1	22	3	4	.	30
Dealing Possessing Look-Alike Substance	1	.	1
Dealing In a Schedule I, II, or III Controlled Substance	.	1	4	1	.	6
Firearm Within 1 Mile School Property Without License	.	.	.	1	1
Forgery,Counterfeiting,Application Fraud	.	.	.	2	2
Handgun Violation (Felony Within 15 Yrs)	1	.	1
Intimidation	1	1	.	2
Invasion Of Privacy	1	1
Murder	3	3
Neglect Of A Dependent	.	.	.	1	1
Non Support Of Dependent Child	.	.	.	1	1	2
Operate Vehicle After Suspended For Life	.	.	.	2	3	.	5
Operating Vehicle Intoxicated Resulting in Death	.	.	2	2
Operating Vehicle Intoxicated Resulting in Serious Bodily Injury	1	1
Operating Vehicle While Intoxicated-Previous Conviction	1	1	2
Operating Vehicle-Habit Traffic Violator	1	1
Opererating Vehicle While Intoxicated - Endangering Person	1	1
Possession Of A Controlled Substance	.	.	.	1	1
Possession Of Cocaine Or Narcotic Drug	.	3	1	.	1	1	.	6
Possession Of Methamphetamine	1	.	1
Residential Entry	1	1
Robbery	.	1	7	2	.	.	.	1	.	.	.	11
Unlawful Firearm Poss By Serious Felon	.	.	2	2
Voluntary Manslaughter	.	4	4
Total	3	16	60	15	6	.	.	1	5	17	4	127

INDIANA DEPARTMENT OF CORRECTION
ADULT OFFENDERS
by Most Serious Offense
for January 2017
snapshot date: 01/01/2017

Wabash Valley Correctional Facility												
Most Serious Offense	Murder	FA	FB	FC	FD	F1	F2	F3	F4	F5	F6	Total
Aggravated Battery	.	.	21	.	.	3	.	6	.	.	.	30
Aiding Inducing/Causing An Offense	.	11	2	.	.	1	.	.	.	1	.	15
Arson	.	1	5	1	.	.	7
Attempt To Commit Felony	.	102	17	1	.	7	.	.	.	1	.	128
Auto Theft, Receiving Stolen Auto Parts	1	1
Battery	.	4	2	13	2	15	3	39
Burglary	.	41	81	13	.	3	1	.	19	10	.	168
Carjacking	.	.	9	9
Child Molesting	.	252	19	4	.	14	289
Conspiracy	.	8	7	2	.	1	1	19
Criminal Confinement	.	.	16	2	18
Criminal Deviate Conduct	.	24	2	26
Criminal Recklessness	.	.	.	3	2	1	.	6
Dealing In Cocaine Or Narcotic Drug	.	65	34	.	.	.	1	2	.	1	.	103
Dealing In Marijuana, Hash, or Hash Oil	.	.	.	2	2
Dealing In Methamphetamine	.	22	45	.	.	.	4	3	3	7	.	84
Dealing In Schedule IV Controlled Substance	.	.	1	1	2
Dealng A Sched I, Ii, Iii Control Subst	1	1
Dealng In a Schedule I, II, or III Controlled Substance	.	6	10	1	.	17
Escape	4	2	6
Failure To Register As A Sex Offender	5	.	5
Failure To Return Lawful Detention/Escape	.	.	2	1	3
Firearm Within 1 Mile School Property Without License	.	.	.	1	1
Forgery,Counterfeiting,Application Fraud	.	.	.	2	2
Fraud On A Financial Institution	1	.	1
Handgun Violation (Felony Within 15 Yrs)	.	.	.	2	4	.	6
Intimidation	3	.	3
Invasion Of Privacy	1	1
Kidnapping	.	20	20
Maintaining Common Nuisance	1	1
Murder	576	576
Neglect Of A Dependent Resulting in Serious Injury	4	.	.	.	4
Neglect Of Dependent Resulting In Death	.	12	.	.	.	1	13
Non Support Of Dependent Child	.	.	.	1	1	1	3
Operate Vehicle After Suspended For Life	.	.	.	3	6	.	9
Operating Vehicle Intoxicated Resulting in Death	.	.	5	1	1	.	.	7

INDIANA DEPARTMENT OF CORRECTION
ADULT OFFENDERS
by Most Serious Offense
for January 2017
snapshot date: 01/01/2017

Wabash Valley Correctional Facility												
Most Serious Offense	Murder	FA	FB	FC	FD	F1	F2	F3	F4	F5	F6	Total
Operating Vehicle Intoxicated Resulting in Serious Bodily Injury	.	.	.	1	1
Operating Vehicle While Intoxicated-Previous Conviction	1	1	2
Operating Vehicle-Habit Traffic Violator	1	1	2
Opererating Vehicle While Intoxicated - Prior Conviction	1	1
Possess Chemical Reagents Or Precursors	.	.	.	1	1
Possession Of Cocaine Or Narcotic Drug	.	3	3	1	.	7
Possession Of Marijuana, Hash, Hash Oil	1	1
Possession Of Methamphetamine	.	1	2	3	.	6
Possession Of Paraphernalia	1	1
Prisoner Poss. Dangerous Device/Material	.	.	3	3
Rape	.	54	7	.	.	7	.	3	.	.	.	71
Reckless Homicide	.	.	.	1	1
Removing, Damaging, Or Altering a VIN	.	.	.	1	1
Resisting Law Enforcement	.	.	1	.	1	.	.	1	.	.	.	3
Robbery	.	47	93	5	.	.	2	9	.	3	.	159
Sexual Misconduct With A Minor	.	1	9	10
Stalking	1	.	1
Strangulation	1	1
Theft,Receiving Stolen Property	.	.	.	1	4	3	8
Unlawful Firearm Poss By Serious Felon	.	.	23	5	.	.	28
Voluntary Manslaughter	.	35	2	.	.	.	1	38
Total	576	709	421	62	14	37	11	28	29	69	15	1,971

INDIANA DEPARTMENT OF CORRECTION
ADULT OFFENDERS
by Most Serious Offense
for January 2017
snapshot date: 01/01/2017

Westville Correctional Facility													
Most Serious Offense	Murder	FA	FB	FC	FD	F1	F2	F3	F4	F5	F6	HO	Total
Accident Fail To Stop Reulting in Serious Injury or Death	2	.	.	2
Aggravated Battery	.	.	31	12	43
Aiding Inducing/Causing An Offense	.	2	12	2	.	.	.	9	7	16	.	.	48
Arson	.	1	10	6	.	.	.	17
Assisting A Criminal	.	.	.	2	1	.	.	3
Attempt To Commit Felony	.	22	18	6	.	.	1	2	4	11	1	.	65
Auto Theft, Receiving Stolen Auto Parts	.	.	.	2	4	12	.	18
Battery	.	.	7	38	3	.	.	5	.	85	4	.	142
Battery By Bodily Waste	.	.	.	1	1	2
Battery To A Child Causing Death	.	1	1
Burglary	.	11	208	85	.	.	4	1	100	92	.	.	501
Carjacking	.	.	4	4
Carrying Handgun Without License	.	.	.	8	8
Child Molesting	.	1	.	3	4
Conspiracy	.	6	12	1	2	.	2	1	3	7	.	.	34
Controlled Substance Registration	1	1
Corrupt Business Influence	.	.	.	11	8	.	.	19
Criminal Confinement	.	.	15	10	3	.	1	4	.	9	2	.	44
Criminal Deviate Conduct	.	2	1	3
Criminal Recklessness	.	.	.	2	5	6	1	.	14
Dangerous Possession Of A Handgun	.	.	.	1	1
Dealing In Cocaine Or Narcotic Drug	.	71	199	1	.	.	7	17	32	54	.	.	381
Dealing In Marijuana, Hash, or Hash Oil	.	.	.	1	1	2	1	.	5
Dealing In Methamphetamine	.	17	120	.	.	.	6	8	48	85	.	.	284
Dealing In Sched Iv Controlled Substance	1	1
Dealing In Sched V Controlled Substance	1	.	.	1
Dealing In Schedule IV Controlled Substance	.	.	2	2	4
Dealing Possessing Look-Alike Substance	.	.	.	3	3	2	.	8
Dealng A Sched I, Ii, Iii Control Subst	2	.	.	.	2
Dealng In a Schedule I, II, or III Controlled Substance	.	9	71	4	.	.	84
Disarming A Law Enforcement Officer	.	.	.	1	2	.	.	3
Domestic Battery	7	2	8	.	17
Escape	11	13	.	24
Fail To Return To Accident Resulting in Serious Injury	1	1
Fail To Stop After Accident - Operating Vehicle Intoxicated	.	.	2	2

INDIANA DEPARTMENT OF CORRECTION
ADULT OFFENDERS
by Most Serious Offense
for January 2017
snapshot date: 01/01/2017

Westville Correctional Facility													
Most Serious Offense	Murder	FA	FB	FC	FD	F1	F2	F3	F4	F5	F6	HO	Total
Failure Of Sex Offender To Possess Id	1	1
Failure To Register As A Sex Offender	.	.	.	12	23	2	.	37
Failure To Return Lawful Detention/Escape	.	.	3	4	2	9
Firearm Within 1 Mile School Property Without License	.	.	.	6	6
Forgery,Counterfeiting,Application Fraud	.	.	.	34	2	4	.	40
Fraud	2	2	.	4
Fraud On A Financial Institution	.	.	.	8	8	.	.	16
Habitual Offender	1	1
Handgun Violation (Felony Within 15 Yrs)	.	.	.	8	44	.	.	52
Home Improvement Fraud Enhancement	.	.	.	1	1
Illegal Possession Of Firearm By Felon	.	.	.	1	1
Intimidation	.	.	.	5	4	15	6	.	30
Involuntary Manslaughter	.	.	.	2	2
Kidnapping	.	1	1	.	1	.	.	3
Maintaining Common Nuisance	2	.	2
Murder	48	48
Neglect Of A Dependent	.	.	6	3	3	.	.	12
Neglect Of A Dependent Resulting in Serious Injury	6	6
Non Support Of Dependent Child	.	.	.	17	5	22
Obliterating Handgun I.D.	1	.	.	1
Obstruction Of Justice	1	1	.	2
Operate Vehicle After Suspended For Life	.	.	.	28	54	.	.	82
Operating Vehicle Intoxicated Resulting in Death	.	.	2	3	5	5	.	.	15
Operating Vehicle Intoxicated Resulting in Serious Bodily Injury	.	.	.	1	1	1	.	3
Operating Vehicle While Intoxicated-Previous Conviction	12	11	.	23
Operating Vehicle-Habit Traffic Violator	.	.	.	1	6	1	.	8
Opererating Vehicle While Intoxicated - Endangering Person	1	1
Opererating Vehicle While Intoxicated - Prior Conviction	8	.	8
Pointing A Firearm	1	1
Possess Chemical Reagents Or Precursors	.	.	.	1	3	.	.	4
Possess Of Precursors	2	3	.	5
Possession Of A Controlled Substance	.	.	.	7	7	14
Possession Of Cocaine Or Narcotic Drug	.	9	15	6	3	.	.	3	6	12	15	.	69
Possession Of Marijuana, Hash, Hash Oil	4	4
Possession Of Methamphetamine	.	1	12	5	7	17	10	.	52

INDIANA DEPARTMENT OF CORRECTION
 ADULT OFFENDERS
 by Most Serious Offense
 for January 2017
 snapshot date: 01/01/2017

Westville Correctional Facility													
Most Serious Offense	Murder	FA	FB	FC	FD	F1	F2	F3	F4	F5	F6	HO	Total
Possession Of Syringes Or Needles	2	4	.	6
Possession Or Use Of Legend Drug	1	1	.	2
Prisoner Poss. Dangerous Device/Material	.	.	.	1	1
Rape	.	4	4
Reckless Homicide	.	.	.	3	5	.	.	8
Residential Entry	5	.	5
Resisting Law Enforcement	2	1	7	.	10
Robbery	.	20	133	25	.	.	3	67	.	32	.	.	280
Security Fraud	.	.	.	1	1
Sexual Misconduct With A Minor	.	.	1	1	2
Stalking	.	.	1	1	1	.	.	.	1	6	.	.	10
Strangulation	3	2	.	5
Theft,Receiving Stolen Property	36	31	.	67
Trafficking With An Inmate	.	.	.	1	3	.	.	4
Unlawful Firearm Poss By Serious Felon	.	.	49	30	.	.	.	79
Voluntary Manslaughter	.	26	7	33
Welfare Fraud	1	1
Total	48	204	941	366	133	.	24	138	244	635	160	1	2,894