

DATE	REVISIONS	BY

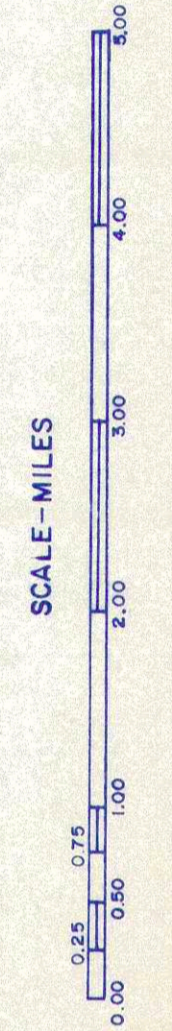
NOTE: This map was prepared by the Indiana State Highway Commission, Division of Planning, in cooperation with the U.S. Department of Transportation, Federal Highway Administration, under a contract with the Indiana State Highway Commission, Indianapolis, Indiana, 46204.

SHEET 1 OF 1 MAP SHEET AND 1 SUPPLEMENTAL SHEETS

GENERAL HIGHWAY AND TRANSPORTATION MAP SULLIVAN COUNTY INDIANA 77

# GENERAL HIGHWAY AND TRANSPORTATION MAP SULLIVAN COUNTY INDIANA

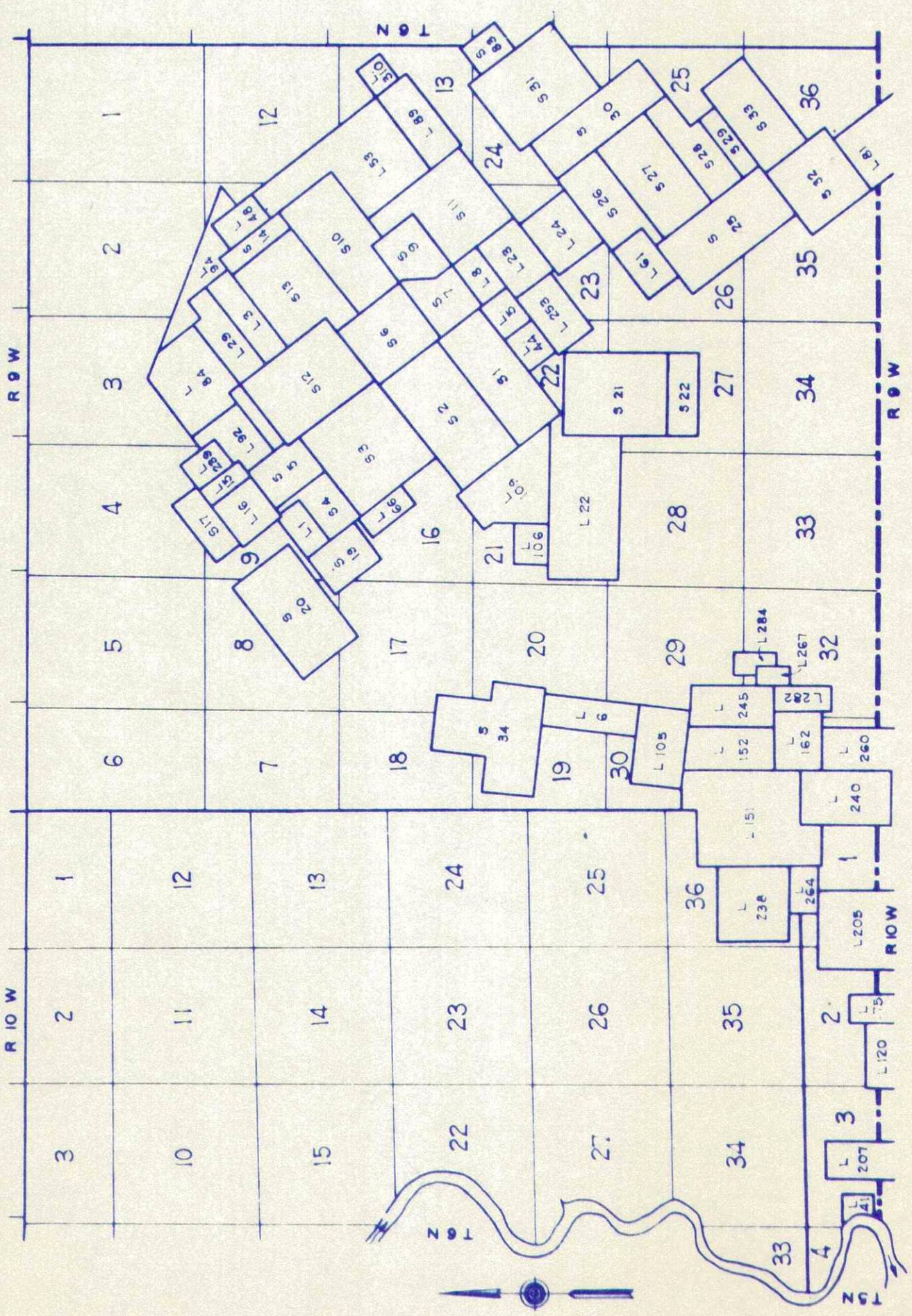
PREPARED BY THE  
DIVISION OF PLANNING  
INDIANA STATE HIGHWAY COMMISSION  
IN COOPERATION WITH THE  
U.S. DEPARTMENT OF TRANSPORTATION  
FEDERAL HIGHWAY ADMINISTRATION



1977

POLYCONIC PROJECTION

MAP CHECKED WITH AERIAL PHOTOGRAPHS DATED 1966



INSERT  
ORIGINAL LAND LOCATIONS AND SURVEYS

## LEGEND

- INTERSTATE HIGHWAY SYSTEM
- UNITED STATES HIGHWAY
- STATE HIGHWAY SYSTEM
- DIVIDED HIGHWAY
- PAVED ROAD
- BITUMINOUS SURFACED ROAD
- GRADED AND IMPROVED EARTH ROAD
- UNIMPROVED EARTH ROAD
- PRIMITIVE ROAD
- INTERCHANGE LOCATED IN INCORPORATED CITY
- INTERCHANGE
- HIGHWAY GRADE SEPARATION
- HIGHWAY BRIDGES OVER 20' SPAN
- CONCRETE FORD OR DIP
- FORD - ROAD ESTABLISHED
- ROAD - ROAD ESTABLISHED BY SINGLE OPERATING COMPANY
- RAILROAD STATION
- RAILROAD ABOVE
- RAILROAD BELOW
- NARROW STREAM
- NAVIGABLE STREAM
- DAM WITH ROAD
- DAM WITHOUT ROAD
- LEVEE
- TOLL FERRY
- COUNTY BOUNDARY
- CIVIL TOWNSHIP LINE
- CORPORATE LINE
- INSET LIMITS
- CONGRESSIONAL TOWNSHIP LINE
- STATE LINE BOUNDARY (NAME SHOWN)
- STATE PARK OR STATE GAME PRESERVE BOUNDARY
- NATIONAL PARK BOUNDARY (NAME SHOWN)
- NATIONAL PURCHASE UNIT BOUNDARY
- AIRPORT BOUNDARY
- COMMERCIAL, MUNICIPAL, OR PRIVATE AIRFIELD BOUNDARY
- A LANDING FIELD
- STATE CAPITOL
- COUNTY SEAT
- OTHER CITIES AND VILLAGES
- DWELLING OR FARM UNIT
- SEASONAL DWELLING CLOSELY SPACED
- ROW OR GROUP OF SEASONAL DWELLINGS
- MOTEL OR TOURIST COURT
- TRAILER COURT
- STORE OR SMALL BUSINESS ESTABLISHMENT
- TOWN HALL, GARAGE, OR COMMUNITY HALL
- COMBINED DWELLING AND STORE
- POST OFFICE
- BARRACKS OR DORMITORIES FOR STUDENTS
- SCHOOLHOUSE, OTHER EDUCATIONAL INSTITUTION
- CHURCH, OTHER RELIGIOUS INSTITUTION
- CEMETERY
- CHURCH WITH CEMETERY ADJACENT
- FRESH AIR FARM OR REST HOME
- INDUSTRIAL PLANT
- FIRE ENGINE HOUSE
- FAIR GROUND, RACE COURSE OR SPLEWAY
- WAREHOUSE - GENERAL
- FACTORY OR MILLING STATION (GENERAL)
- POWER PLANT
- HIGHWAY GARAGE
- BOOSTER STATION (WITH CALL LETTERS)
- RADIO RANGE STATION
- TELEVISION RELAY STATION
- AGRICULTURAL EXPERIMENT STATION
- COUNTY FARM
- BOOK DEPOSITORY
- NURSERY
- FRUIT OR NUT ORCHARD
- GREENHOUSE
- CAMP OR LODGE
- OBSERVATION OR LOOKOUT TOWER
- SMALL (STATIONARY)
- DRIVE-IN THEATRE
- RIFLE CLUB
- GOLF COURSE OR COUNTRY CLUB
- SMALL PARK
- WAYSIDE PARK
- BATTING BEACH OR SWIMMING POOL
- PLAYGROUND, BALL FIELD, ETC.
- MUCK QUARRY OR OPEN CUT
- OIL OR GAS WELLS (OIL OR GAS)
- GROUP OF STORAGE TANKS (OIL OR GAS)
- GRAVEL PIT
- GARBAGE OR RUBBISH DUMP

INSET SCALE- FEET