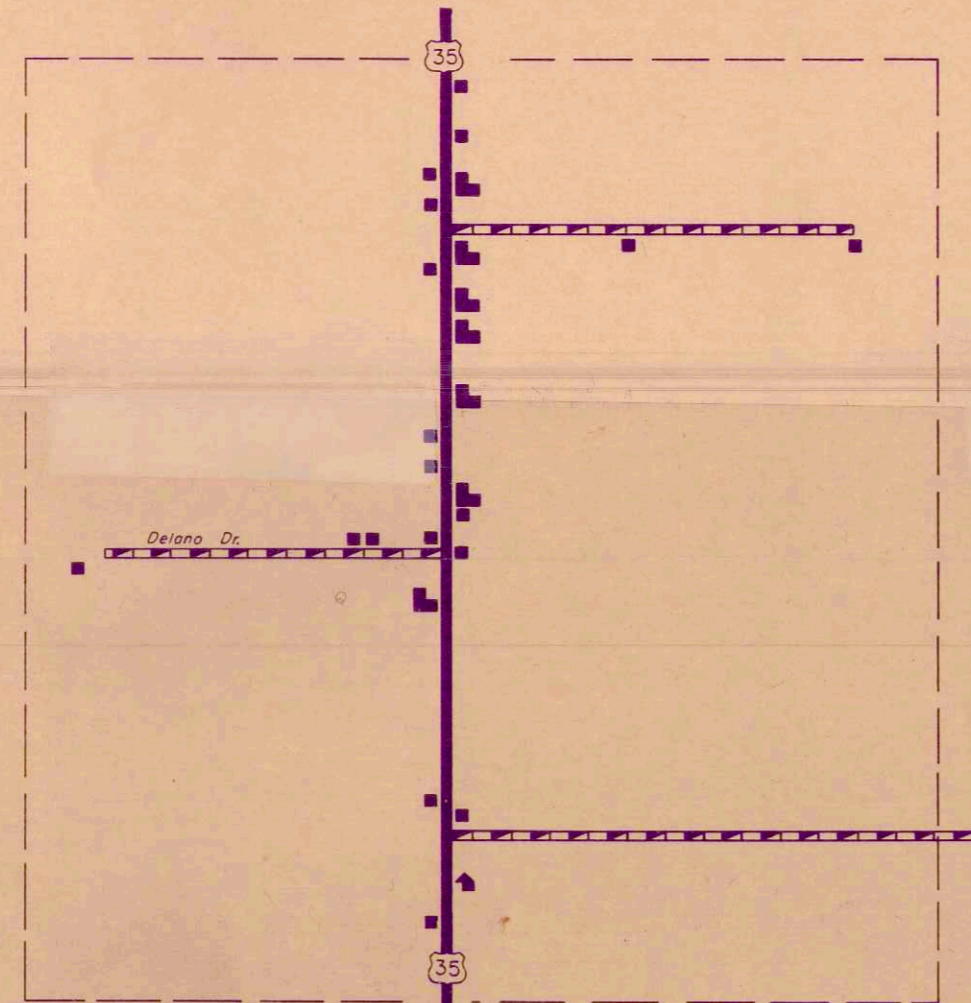
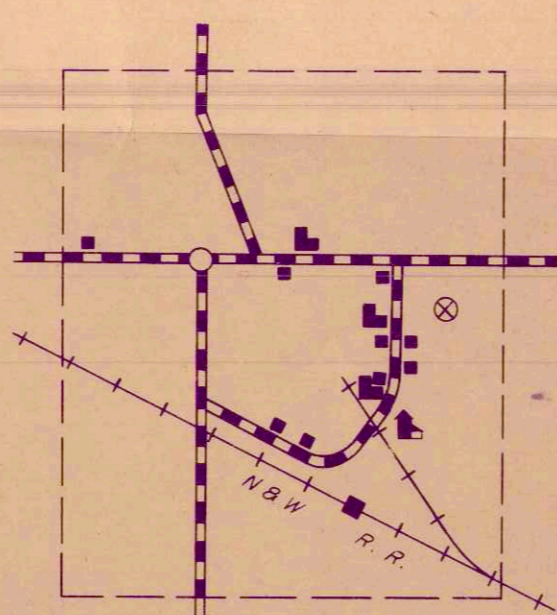


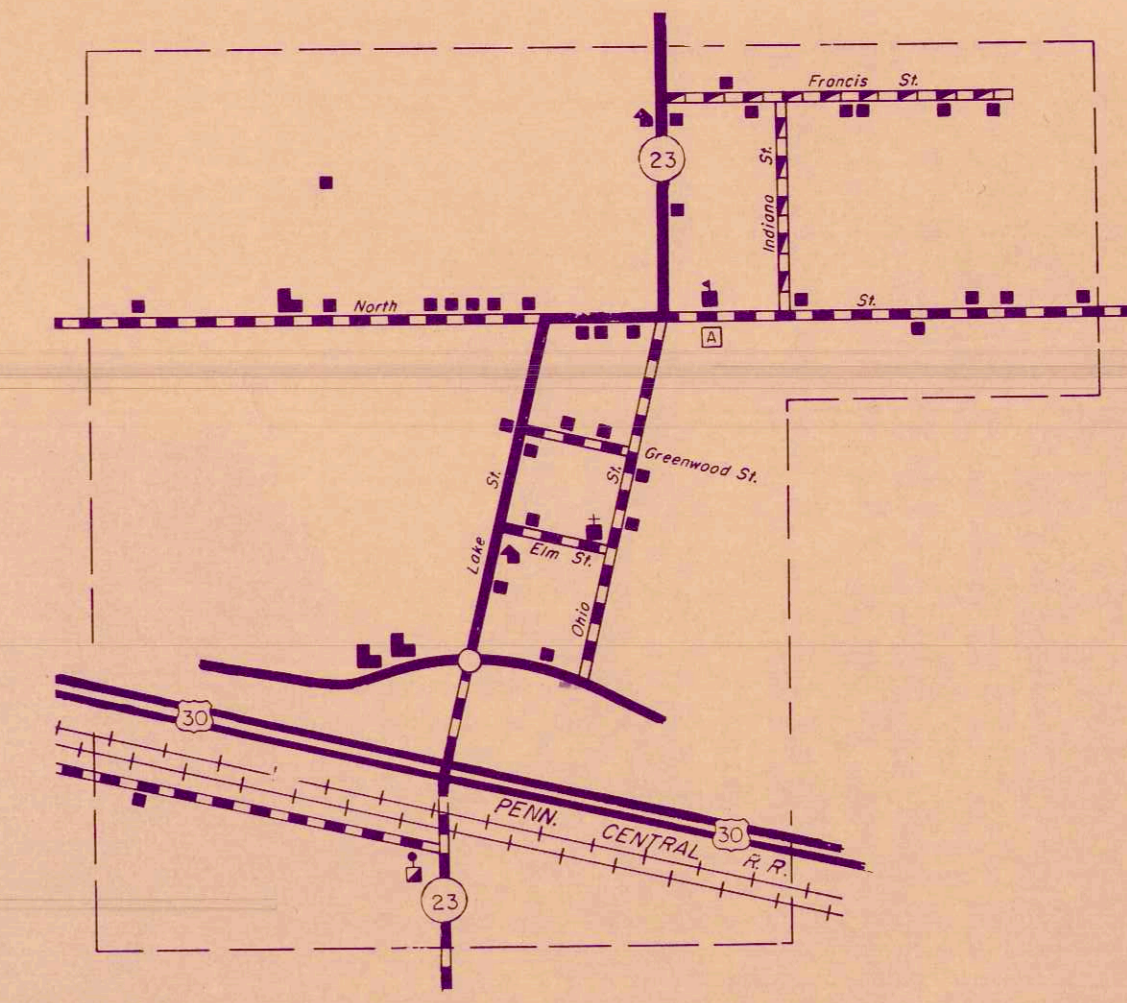
-2- TOTO
UNINCORPORATED TOWN
STARKE COUNTY
INDIANA
LOCATED IN SECS.
T32N, R2W
T32N, R3W
T33N, R3W
T33N, R2W



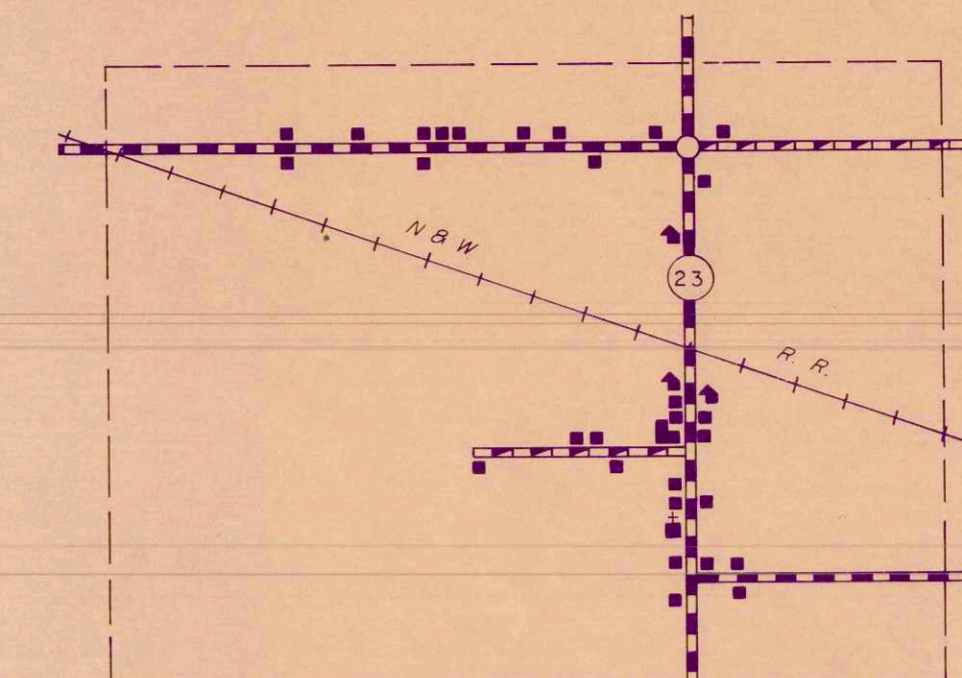
INSET NO. 3
UNINCORPORATED AREA
STARKE COUNTY
INDIANA
LOCATED IN SECS.
34 & 35
T33N, R2W



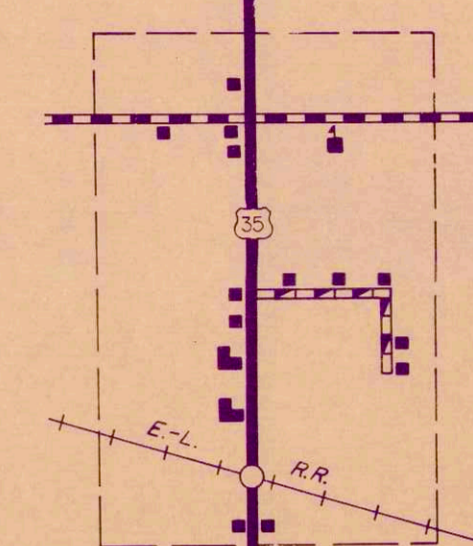
-4- BREMS
UNINCORPORATED TOWN
STARKE COUNTY
INDIANA
LOCATED IN SECS.
T33N, R3W
T33N, R2W



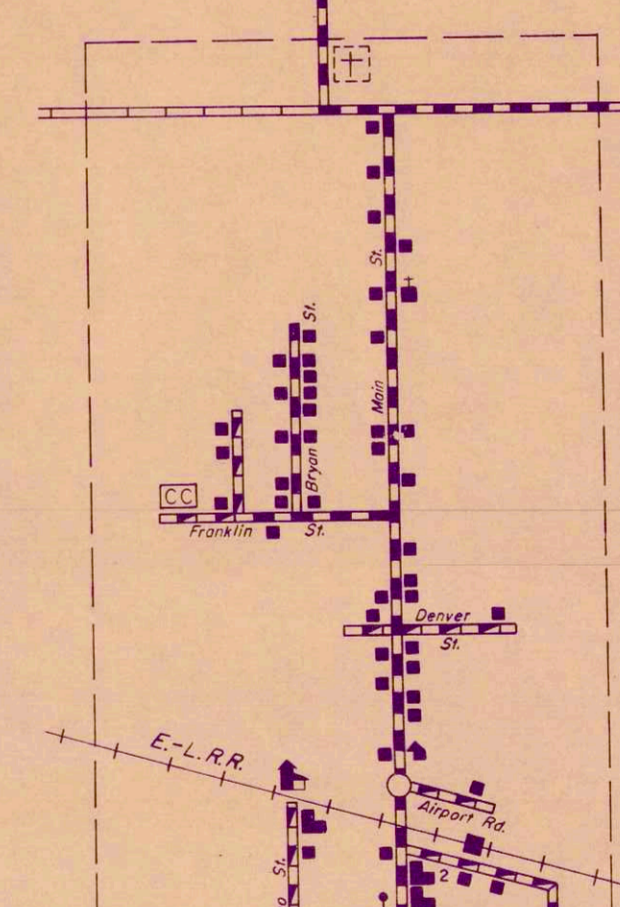
-6- GROVERTOWN
UNINCORPORATED TOWN
STARKE COUNTY
INDIANA
LOCATED IN SECS.
32, 33, 26 & 27
T34N, R1W



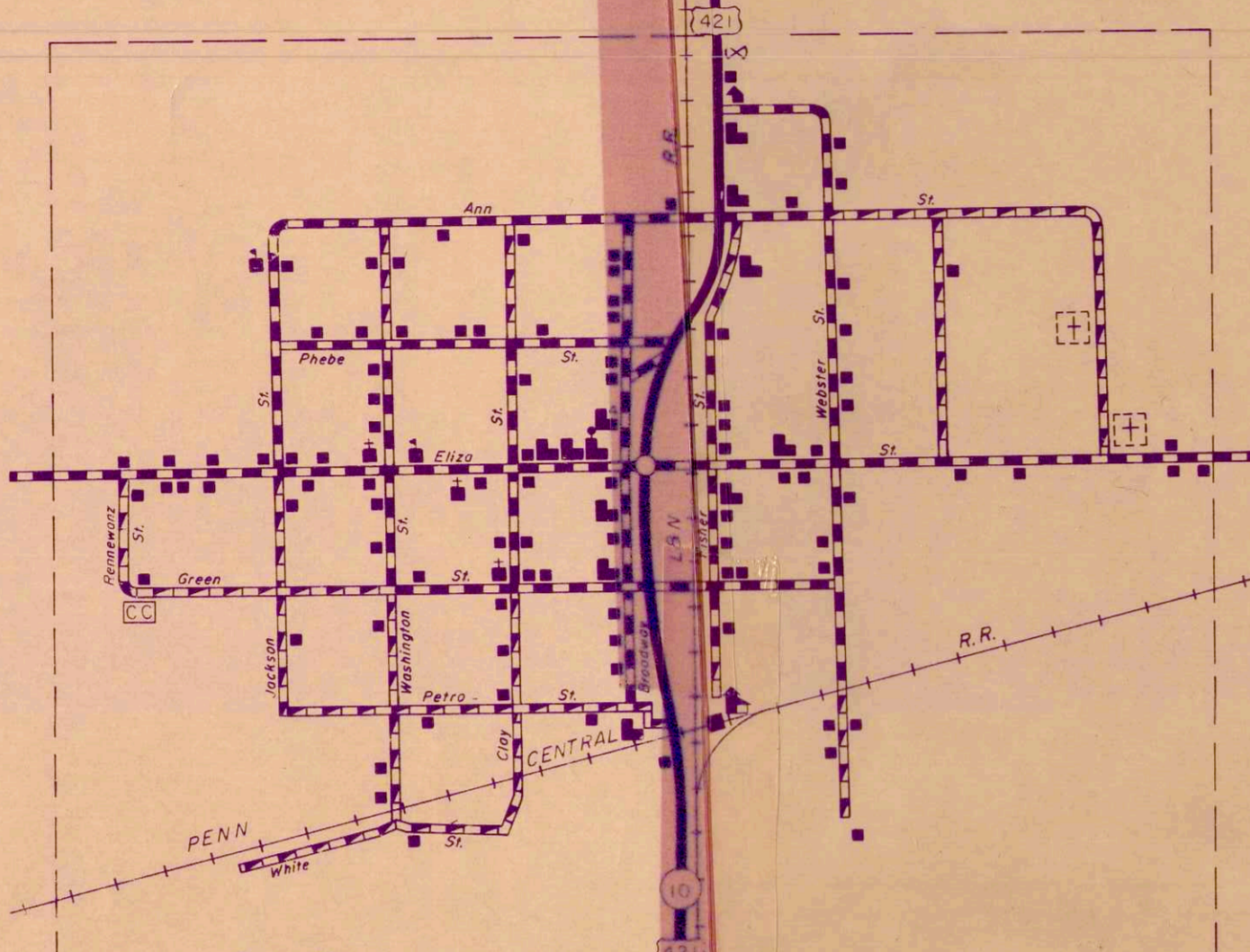
-7- OBER
UNINCORPORATED TOWN
STARKE COUNTY
INDIANA
LOCATED IN SECS.
27, 28, 33 & 34
T33N, R1W



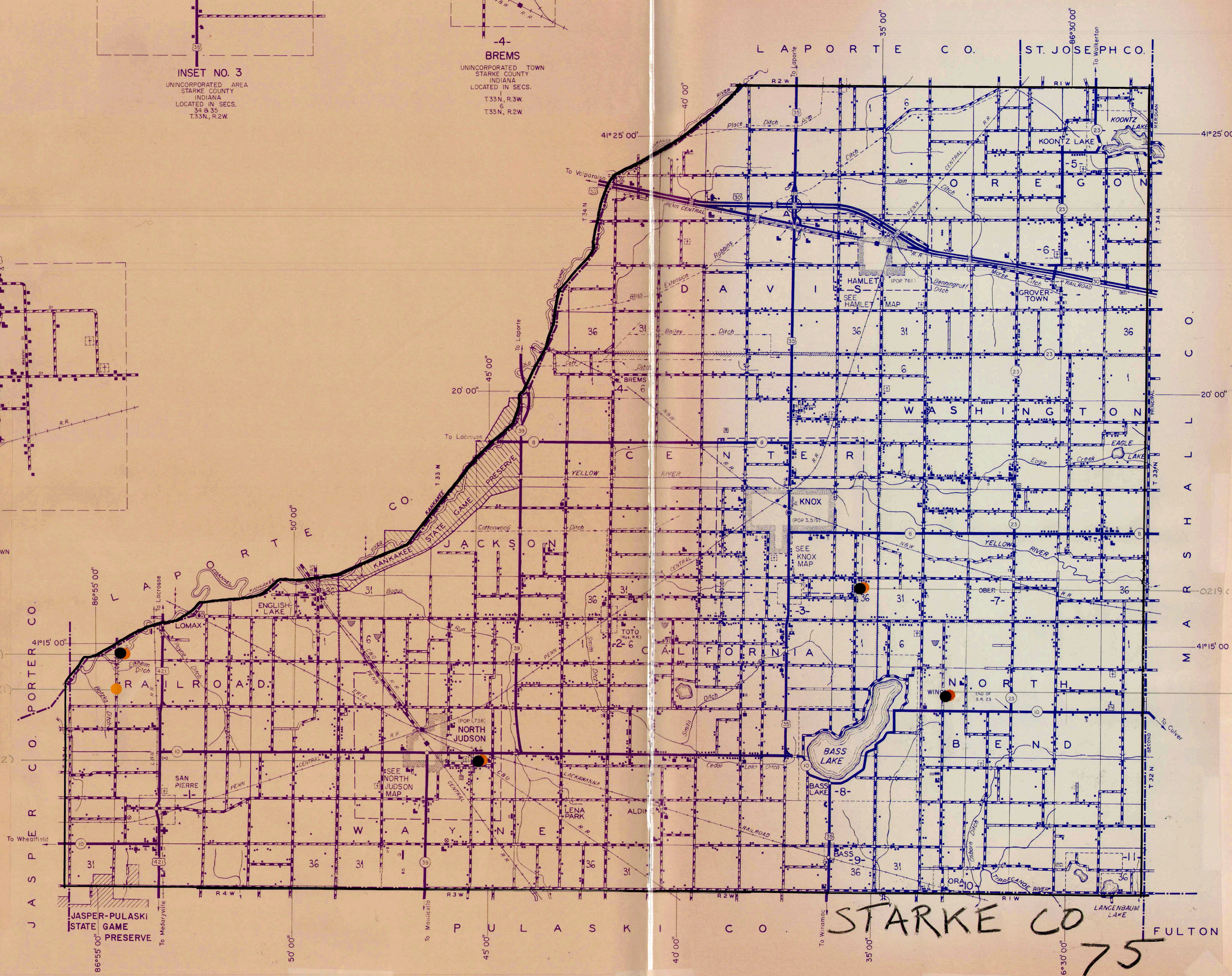
-9- BASS
UNINCORPORATED TOWN
STARKE COUNTY
INDIANA
LOCATED IN SECS.
25, 26, 35 & 36
T33N, R2W



-10- ORA
UNINCORPORATED TOWN
STARKE COUNTY
INDIANA
LOCATED IN SEC.
T32N, R1W



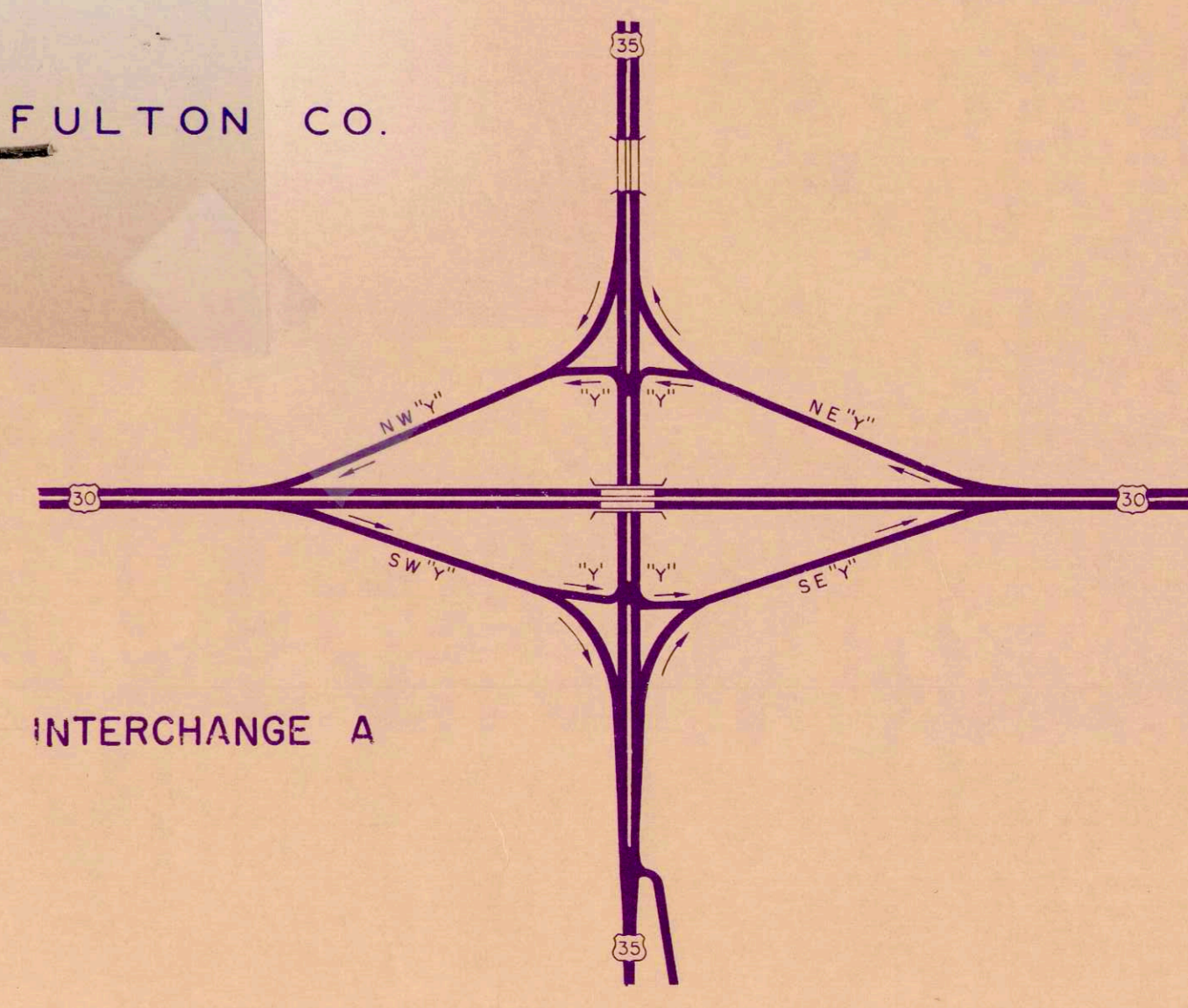
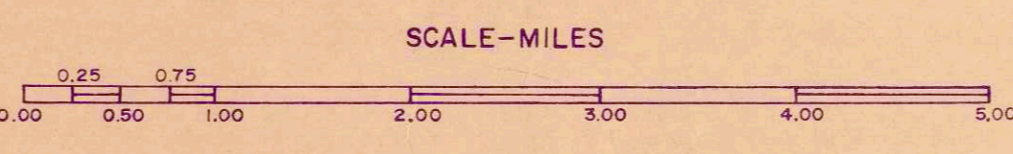
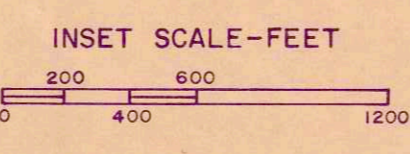
-1- SAN PIERRE
UNINCORPORATED TOWN
STARKE COUNTY
INDIANA
LOCATED IN SECS.
23, 24, 28 & 29
T32N, R4W



1709 (1)
16,016 (1)
18,000 (1)
0319 (1)

LEGEND

- INTERSTATE HIGHWAY SYSTEM
- UNITED STATES HIGHWAY
- STATE HIGHWAY SYSTEM
- DIVIDED HIGHWAY
- PAVED ROAD
- BITUMINOUS SURFACED ROAD
- METAL SURFACED ROAD
- GRADED AND DRAINED EARTH ROAD
- UNIMPROVED EARTH ROAD
- INTERCHANGE (LOCATED IN INCORPORATED CITY)
- INTERCHANGE
- HIGHWAY GRADE SEPARATION
- HIGHWAY BRIDGES (OVER 20' SPAN)
- CONCRETE FORD OR DIP
- FORD - ROAD ESTABLISHED
- RAILROAD (ANY NUMBER OF TRACKS) USED BY SINGLE OPERATING COMPANY
- RAILROAD STATION
- RAILROAD ABOVE
- RAILROAD BELOW
- NARROW STREAM
- WIDE STREAM (ARROWS POINT IN DIRECTION OF FLOW)
- NAVIGABLE STREAM (ARROWS POINT IN DIRECTION OF FLOW)
- DAM WITH ROAD
- DAM WITH LOCK
- DAM WITHOUT ROAD
- LEVEE
- LEVEE WITH ROAD
- TOLL FERRY
- STATE BOUNDARY
- COUNTY LINE
- CIVIL TOWNSHIP LINE
- CORPORATE LINE
- INSET LIMITS
- CONGRESSIONAL TOWNSHIP LINE
- SECTION LINE
- STATE PARK BOUNDARY (NAME SHOWN)
- STATE FOREST OR STATE GAME PRESERVE BOUNDARY
- NATIONAL PARK BOUNDARY (NAME SHOWN)
- NATIONAL PURCHASE UNIT BOUNDARY
- AIRPORT BOUNDARY
- C COMMERCIAL, M MUNICIPAL, OR P PRIVATE AIRPORT
- A ARMY OR NATIONAL GUARD LANDING FIELD
- STATE CAPITOL
- COUNTY SEAT
- OTHER CITIES AND VILLAGES
- DWELLING OR FARM UNIT
- ROW OR GROUP OF DWELLINGS CLOSELY SPACED
- SEASONAL DWELLING
- ROW OR GROUP OF SEASONAL DWELLINGS
- APARTMENT
- HOTEL
- MOTEL OR TOURIST COURT
- TRAILER COURT
- STORE OR SMALL BUSINESS ESTABLISHMENT
- TOWN HALL, GRANGE OR COMMUNITY HALL
- COMBINED DWELLING AND STORE
- POST OFFICE
- BARRACKS OR DORMITORIES FOR STUDENTS, WORKERS, MIGRANTS, ETC.
- SCHOOLHOUSE, OTHER EDUCATIONAL INSTITUTION
- CHURCH, OTHER RELIGIOUS INSTITUTION
- CEMETERY
- CHURCH WITH CEMETERY ADJACENT
- FRESH AIR FARM OR REST HOME
- HOSPITAL
- POLICE STATION
- FIRE ENGINE HOUSE
- ARMORY
- FAIR GROUND, RACE COURSE OR SPEEDWAY
- WAREHOUSE - GENERAL
- FACTORY OR INDUSTRIAL PLANT
- GAUGING OR PUMPING STATION (GENERAL)
- PUMPING STATION (GAS OR OIL)
- HIGHWAY GARAGE
- POWER PLANT
- BOOSTER STATION
- RADIO STATION (WITH CALL LETTERS)
- RADIO RANGE STATION
- TELEVISION RELAY STATION
- AGRICULTURAL EXPERIMENT STATION
- COUNTY FARM
- STOCK YARD
- GRAIN ELEVATOR
- NURSERY
- FRUIT OR NUT ORCHARD
- GREENHOUSE
- CORRECTIONAL INSTITUTION
- CAMP OR LODGE
- OBSERVATION OR LOOKOUT TOWER
- SAWMILL (STATIONARY)
- DRIVE-IN THEATRE
- RIFLE CLUB
- GOLF COURSE OR COUNTRY CLUB
- SMALL PARK
- WAYSIDE PARK
- BATHING BEACH OR SWIMMING POOL
- PICNIC GROUND
- PLAYGROUND, BALL FIELD, ETC.
- SCENIC SITE
- MINE, QUARRY OR OPEN CUT
- OIL OR GAS WELLS
- GROUP OF STORAGE TANKS (OIL OR GAS)
- QUARRY
- GRAVEL PIT
- GARBAGE OR RUBBISH DUMP



**GENERAL HIGHWAY AND TRANSPORTATION MAP
STARKE COUNTY
INDIANA**

PREPARED BY THE
DIVISION OF PLANNING
INDIANA STATE HIGHWAY COMMISSION
IN COOPERATION WITH THE
U. S. DEPARTMENT OF TRANSPORTATION
FEDERAL HIGHWAY ADMINISTRATION

1977

POLYCONIC PROJECTION

Note: This map not copyrighted. For information regarding availability, write:
Indiana State Highway Commission
Division of Planning
1205 State Office Building
Indianapolis, Ind. 46204

SHEET 1 OF 1 MAP SHEET AND 1 SUPPLEMENTAL SHEETS

APPROVAL DATE

DATE	REVISIONS	BY

