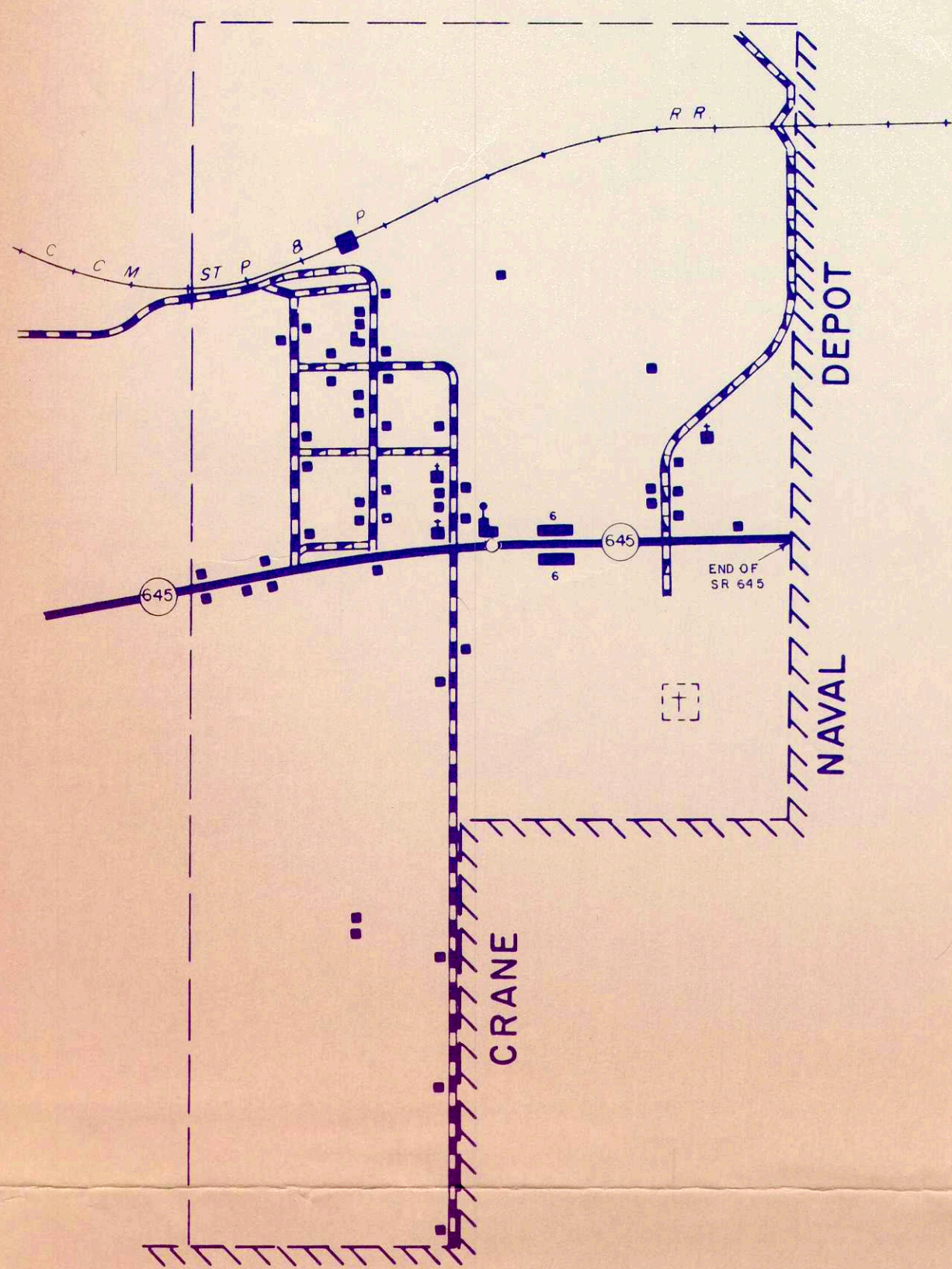
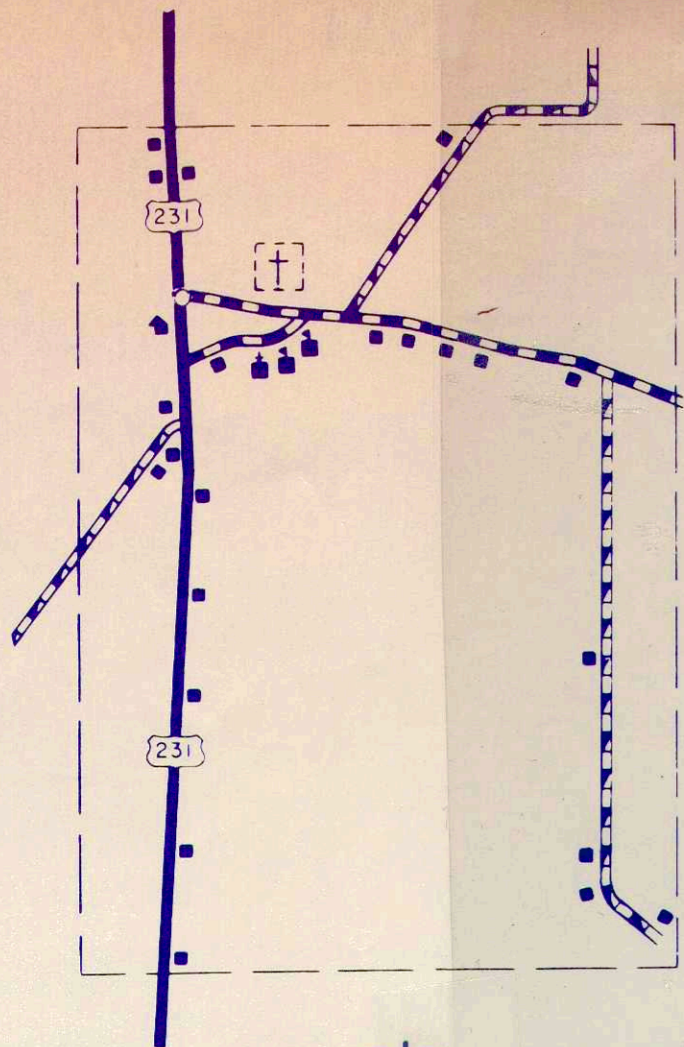


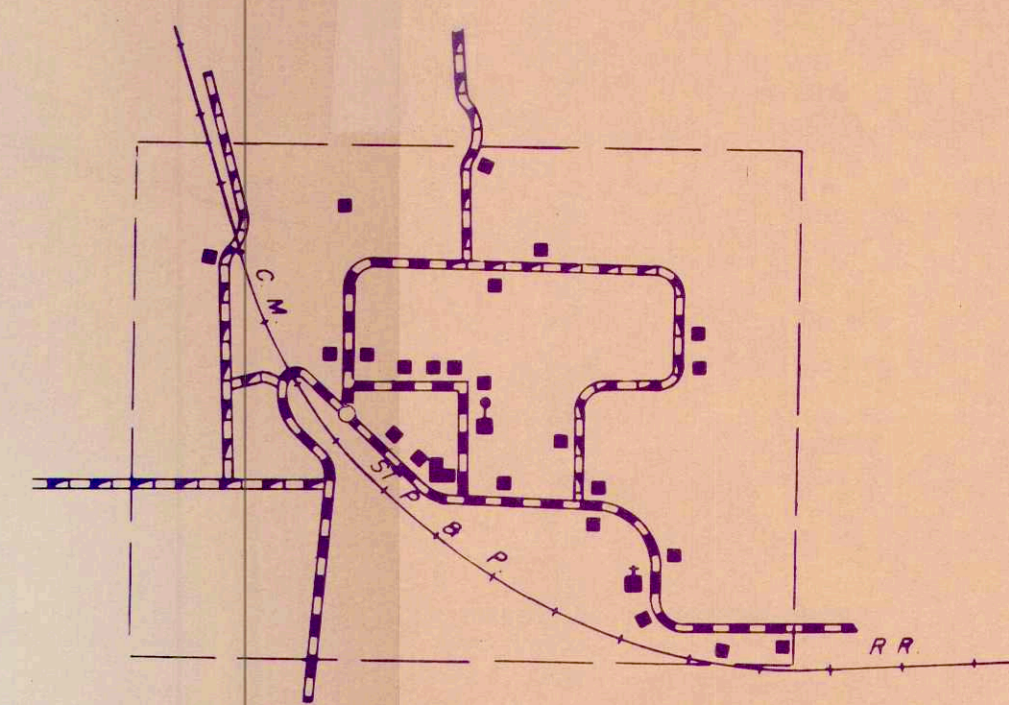
GREENE CO.



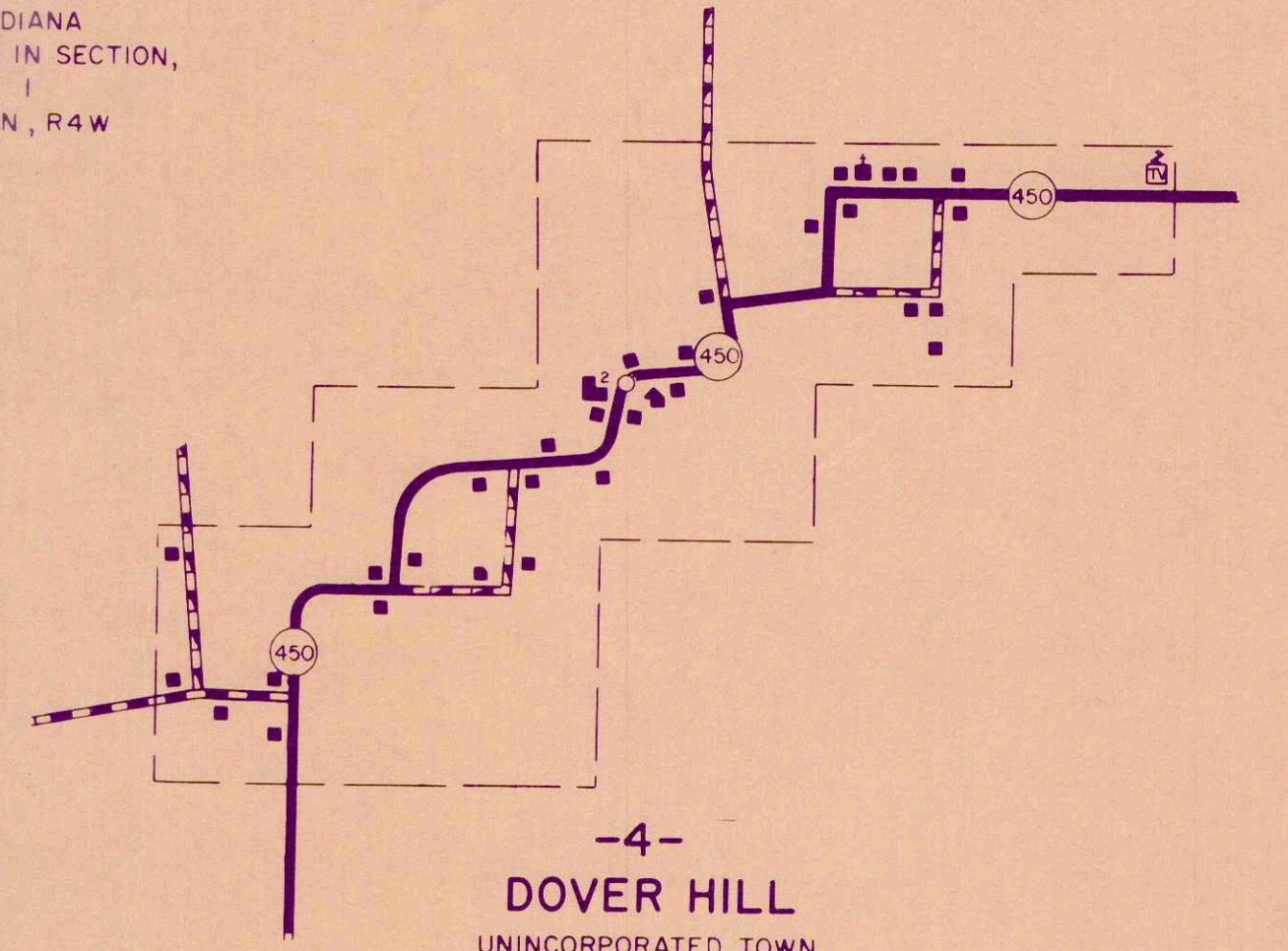
-2- BURNS CITY UNINCORPORATED TOWN MARTIN COUNTY INDIANA LOCATED IN SECTION 31 & 32 T5N, R4W



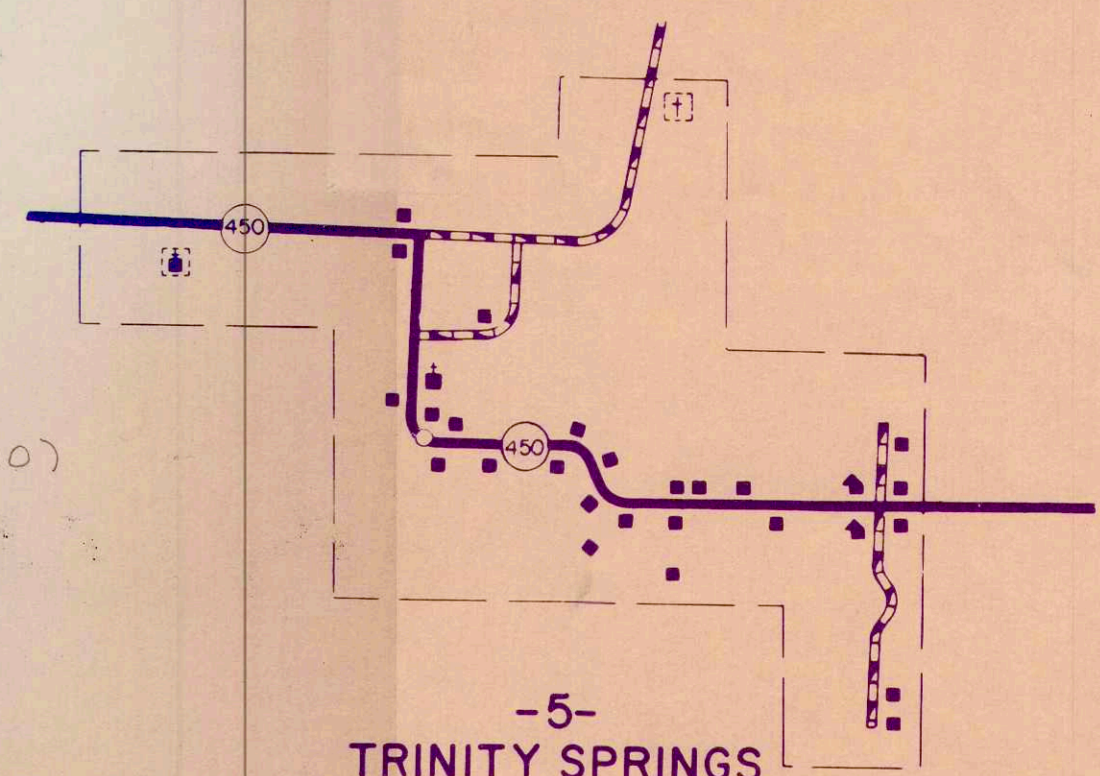
-1- WHITFIELD UNINCORPORATED TOWN MARTIN COUNTY INDIANA LOCATED IN SECTION 12 T2N, R5W



-3- INDIAN SPRING UNINCORPORATED TOWN MARTIN COUNTY INDIANA LOCATED IN SECTION 1 T3N, R4W



-4- DOVER HILL UNINCORPORATED TOWN MARTIN COUNTY INDIANA LOCATED IN SECTION 1 T4N, R3W



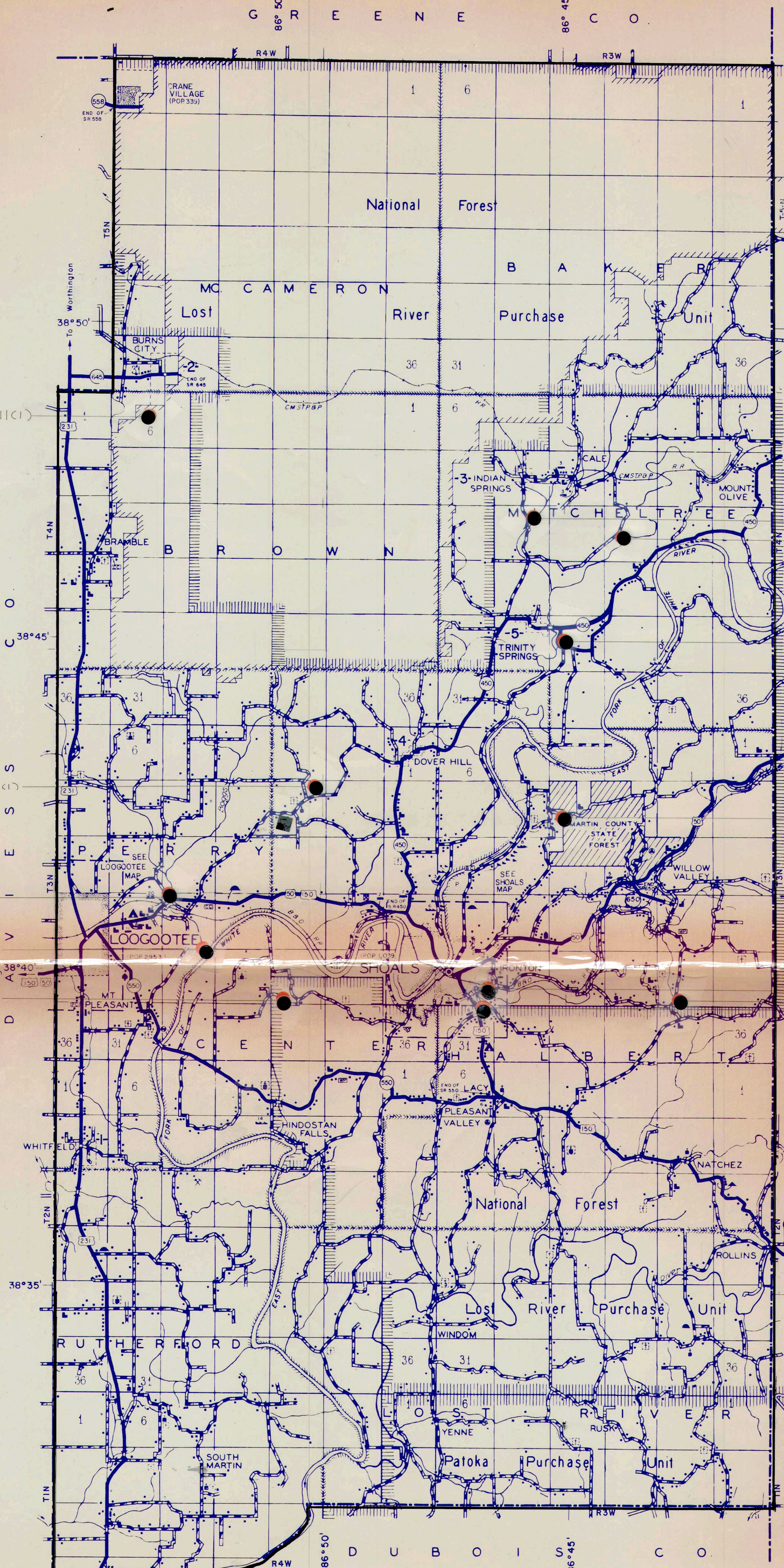
-5- TRINITY SPRINGS UNINCORPORATED TOWN MARTIN COUNTY INDIANA LOCATED IN SECTION 29 T4N, R3W

- INTERSTATE HIGHWAY SYSTEM
- UNITED STATES HIGHWAY
- STATE HIGHWAY SYSTEM
- DIVIDED HIGHWAY
- PAVED ROAD
- BITUMINOUS SURFACED ROAD
- METAL SURFACED ROAD
- GRADED AND DRAINED EARTH ROAD
- UNIMPROVED EARTH ROAD
- INTERCHANGE (LOCATED IN INCORPORATED CITY)
- INTERCHANGE
- HIGHWAY GRADE SEPARATION
- HIGHWAY BRIDGES (OVER 20' SPAN)
- CONCRETE FORD OR DIP
- FORD - ROAD ESTABLISHED
- RAILROAD (ANY NUMBER OF TRACKS) USED BY SINGLE OPERATING COMPANY
- RAILROAD STATION
- RAILROAD ABOVE
- RAILROAD BELOW
- WIDE STREAM
- NARROW STREAM
- NAVIGABLE STREAM (ARROWS POINT IN DIRECTION OF FLOW)
- DAM WITH ROAD
- DAM WITH LOCK
- DAM WITHOUT ROAD
- LEVEE
- LEVEE WITH ROAD
- TOLL FERRY
- STATE BOUNDARY
- COUNTY LINE
- CIVIL TOWNSHIP LINE
- CORPORATE LINE
- INSET LIMITS
- CONGRESSIONAL TOWNSHIP LINE
- SECTION LINE
- STATE PARK BOUNDARY (NAME SHOWN)
- STATE FOREST OR STATE GAME PRESERVE BOUNDARY
- NATIONAL PARK BOUNDARY (NAME SHOWN)
- NATIONAL PURCHASE UNIT BOUNDARY
- AIRPORT BOUNDARY

LEGEND

- C COMMERCIAL, MUNICIPAL, OR PRIVATE AIRPORT
- A ARMY OR NATIONAL GUARD LANDING FIELD
- STATE CAPITOL
- COUNTY SEAT
- OTHER CITIES AND VILLAGES
- DWELLING OR FARM UNIT
- ROW OR GROUP OF DWELLINGS CLOSELY SPACED
- SEASONAL DWELLING
- ROW OR GROUP OF SEASONAL DWELLINGS
- APARTMENT
- MOTEL
- MOTEL OR TOURIST COURT
- TRAILER COURT
- STORE OR SMALL BUSINESS ESTABLISHMENT
- TOWN HALL, GRANGE OR COMMUNITY HALL
- COMBINED DWELLING AND STORE
- POST OFFICE
- BARRACKS OR DORMITORIES FOR STUDENTS, WORKERS, MIGRANTS, ETC.
- SCHOOLHOUSE, OTHER EDUCATIONAL INSTITUTION
- CHURCH, OTHER RELIGIOUS INSTITUTION
- CEMETERY
- CHURCH WITH CEMETERY ADJACENT
- FRESH AIR FARM OR REST HOME
- HOSPITAL
- POLICE STATION
- FIRE ENGINE HOUSE
- ARMORY
- FAIR GROUND, RACE COURSE OR SPEEDWAY
- WAREHOUSE - GENERAL
- FACTORY OR INDUSTRIAL PLANT
- GASOLINE OR PUMPING STATION (GENERAL)
- PUMPING STATION (GAS OR OIL)
- HIGHWAY GARAGE
- POWER PLANT
- BOOSTER STATION
- RADIO STATION (WITH CALL LETTERS)
- RADIO RANGE STATION
- TELEVISION RELAY STATION
- AGRICULTURAL EXPERIMENT STATION
- COUNTY FARM
- STOCK YARD
- GRAIN ELEVATOR
- NURSERY
- FRUIT OR NUT ORCHARD
- GREENHOUSE
- CORRECTIONAL INSTITUTION
- CAMP OR LODGE
- OBSERVATION OR LOOKOUT TOWER
- SAWMILL (STATIONARY)
- DRIVE-IN THEATRE
- RIFLE CLUB
- GOLF COURSE OR COUNTRY CLUB
- SMALL PARK
- WAYSIDE PARK
- BATHING BEACH OR SWIMMING POOL
- PICNIC GROUND
- PLAYGROUND, BALL FIELD, ETC.
- SCIENTIFIC SITE
- MINE, QUARRY OR OPEN PIT
- OIL OR GAS WELLS
- GROUP OF STORAGE TANKS (OIL OR GAS)
- QUARRY
- GRAVEL PIT
- CAMPAGE OR RUBBISH DUMP

INSET SCALE - FEET



MARTIN CO 51

GENERAL HIGHWAY AND TRANSPORTATION MAP MARTIN COUNTY INDIANA

PREPARED BY THE DIVISION OF PLANNING INDIANA STATE HIGHWAY COMMISSION IN COOPERATION WITH THE U.S. DEPARTMENT OF TRANSPORTATION FEDERAL HIGHWAY ADMINISTRATION

SCALE - MILES DEC 31, 1978 POLYCONIC PROJECTION

APPROVAL DATE

DATE	REVISIONS	BY

Note: This map not copyrighted, for information regarding availability, write Indiana State Highway Commission, Division of Planning, 1205 State Office Building, Indianapolis, Ind. 46204

