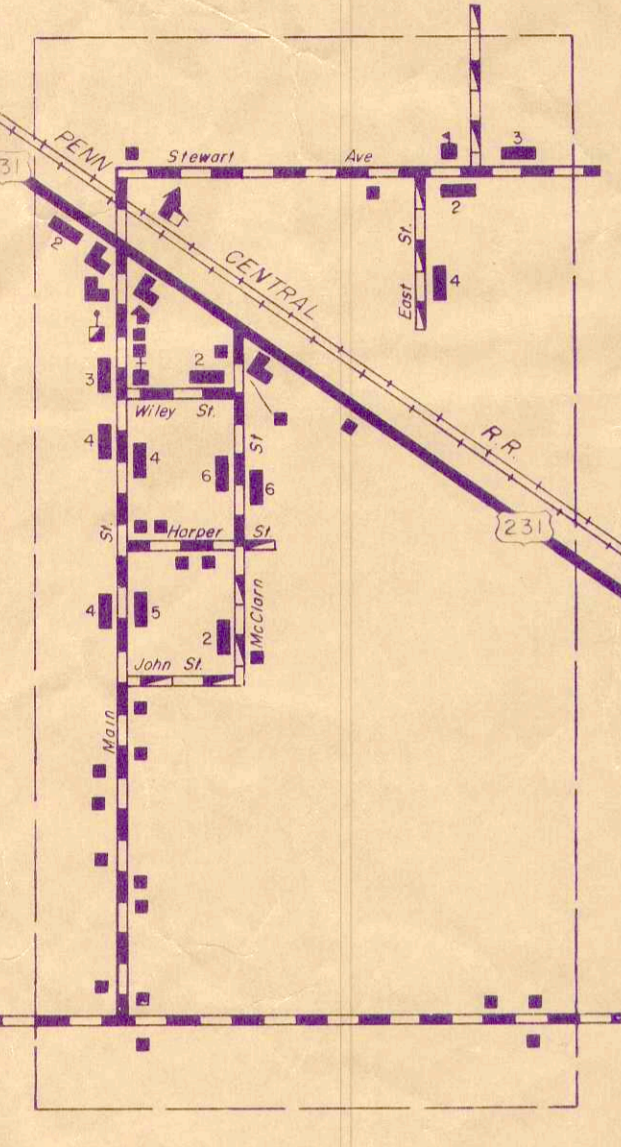
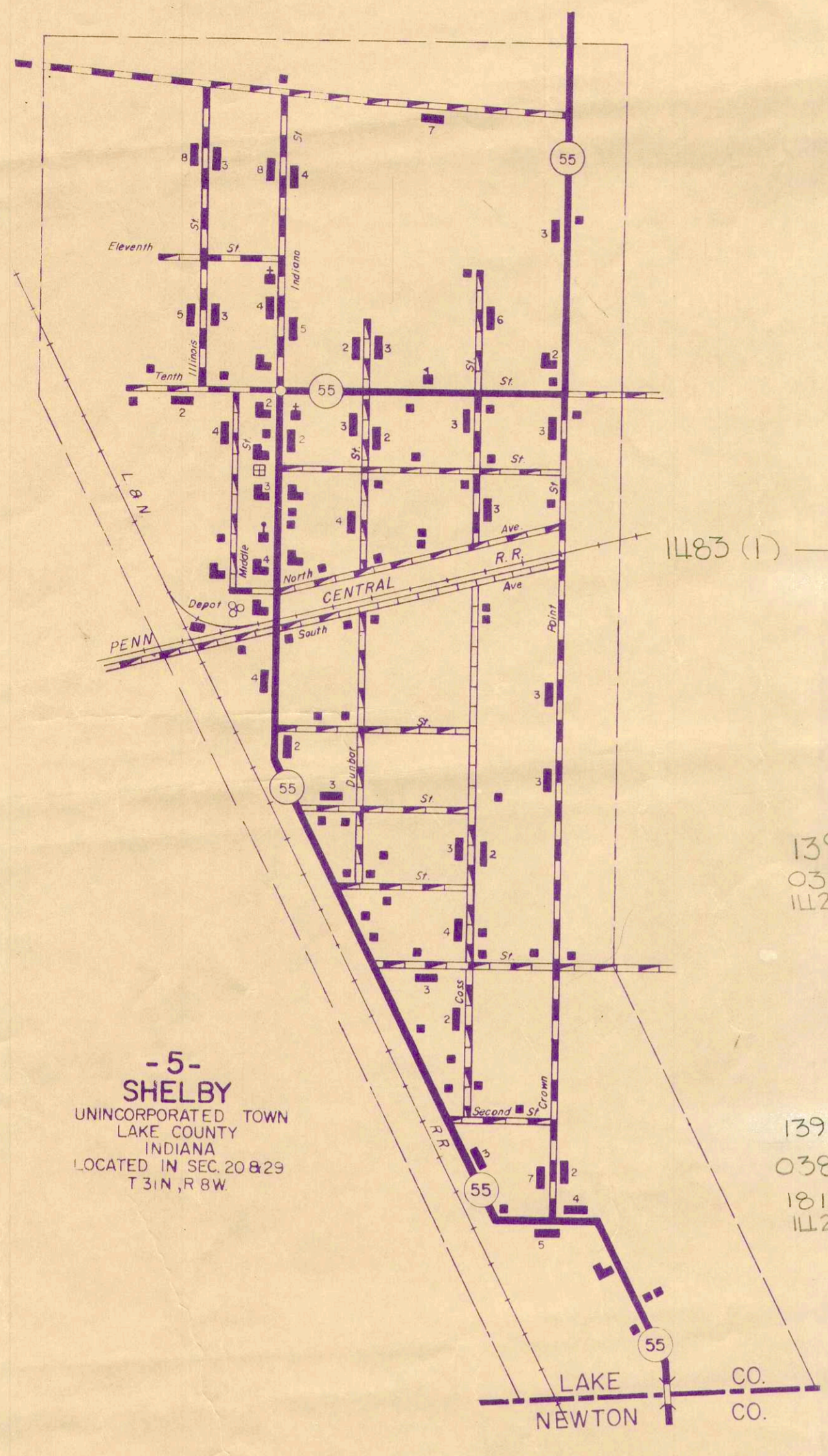


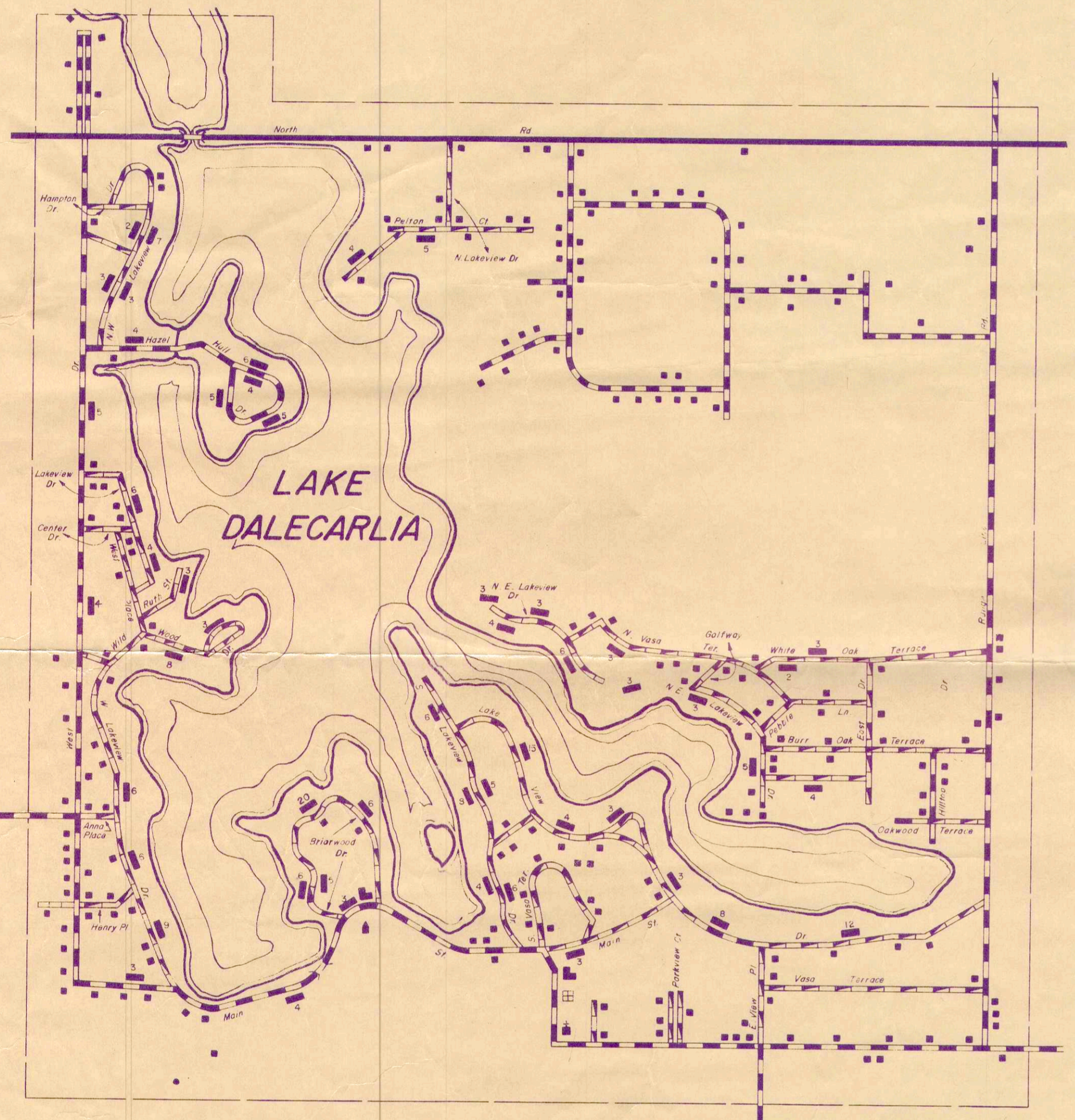
-4- PALMER
UNINCORPORATED TOWN
LAKE COUNTY
INDIANA
LOCATED IN SECS 16, 17, 20 & 21
T.34N, R.7W



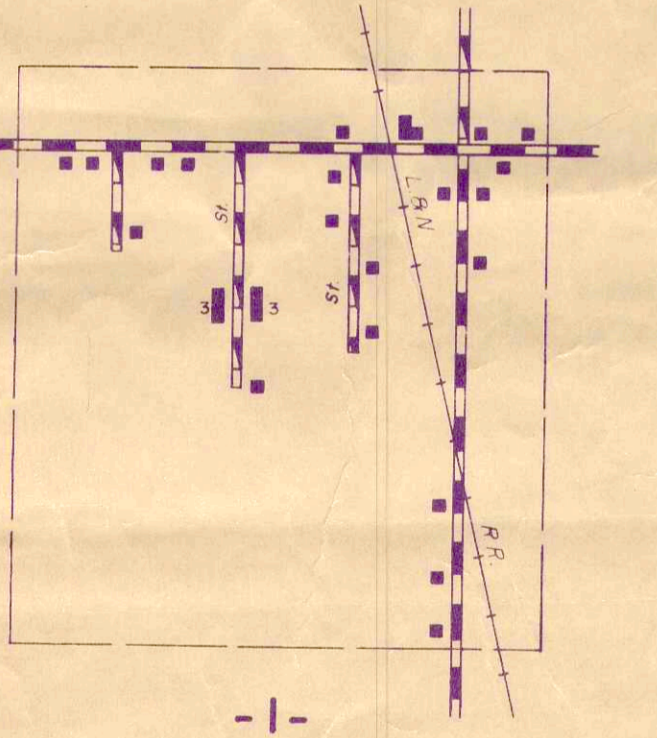
-3- LEROY
UNINCORPORATED TOWN
LAKE COUNTY
INDIANA
LOCATED IN SEC. 30 & 31
T.34N, R.7W



-5- SHELBY
UNINCORPORATED TOWN
LAKE COUNTY
INDIANA
LOCATED IN SEC. 20 & 29
T.31N, R.7W



INSET NO 2
UNINCORPORATED AREA
LAKE COUNTY
INDIANA
LOCATED IN SECS 18 & 12
T.33N, R.9W



-1- CRESTON
UNINCORPORATED TOWN
LAKE COUNTY
INDIANA
LOCATED IN SEC. 2, 3, 10 & 11
T.33N, R.9W

LEGEND

- DIVIDED HIGHWAY
- PAVED ROAD
- BITUMINOUS SURFACED ROAD
- METAL SURFACED ROAD
- GRADED AND DRAINED EARTH ROAD
- UNIMPROVED EARTH ROAD
- PRIMITIVE ROAD
- INTERSTATE HIGHWAY SYSTEM
- UNITED STATES HIGHWAY
- STATE HIGHWAY SYSTEM
- HIGHWAY GRADE SEPARATION
- HIGHWAY INTERCHANGE (LOCATED IN AN INCORP. CITY OR INSET OF UNINCORP. AREA)
- COUNTY SEAT
- OTHER CITIES AND VILLAGES
- PLAYGROUND, BALLFIELD, ETC.
- BATHING BEACH OR SWIMMING POOL
- CAMP SITE, NO PERMANENCE ITEMS OR TRAILER PARKING
- TOURIST COURT OR MOTEL
- BOYS TOWN
- PRIVATE PARK
- WOODS PARK
- PRIVATE CLUB
- COUNTRY CLUB
- GOLF COURSE
- RIDING ACADEMY
- FAIRGROUND, RACE COURSE, SPEEDWAY
- DRIVE-IN THEATRE
- ROW OR GROUP OF DWELLINGS CLOSELY SPACED
- DWELLING OR FARM UNIT
- COMBINED DWELLING AND STORE
- DWELLING AND POST OFFICE
- APARTMENT HOUSE
- SEASONAL DWELLING
- ROW OR GROUP OF SEASONAL DWELLINGS
- HOTEL
- CHURCH, OTHER RELIGIOUS INSTITUTIONS
- CHURCH AND SCHOOL
- CEMETERY
- COURSE WITH CEMETERY ADJACENT
- COMMERCIAL, M MUNICIPAL, OR P PRIVATE AIRPORT
- STATE BOUNDARY
- COUNTY LINE
- CIVIL TOWNSHIP LINE
- CORPORATE LINE
- INSET LIMITS
- CONGRESSIONAL TOWNSHIP LINE
- SECTION LINE
- STATE PARK BOUNDARY (NAME SHOWN)
- RAILROAD (ANY NUMBER OF TRACKS) USED BY SINGLE OPERATING COMPANY
- ELECTRIC INTERURBAN OR SUBURBAN RAILROAD
- RAILROAD ABOVE
- RAILROAD BELOW
- NARROW STREAM
- WIDE STREAM (ARROW POINTS IN DIRECTION OF FLOW)
- OPERATED SHIP AND BARGE LINES ON CANALS
- DRAINAGE DITCH (MAIN) (ARROW POINTS IN DIRECTION OF FLOW)
- HIGHWAY BRIDGES (OVER 20' SPAN)
- DRAWBRIDGE
- FRESH AIR FARM OR REST HOME
- HOSPITAL
- STORE OR SMALL BUSINESS ESTABLISHMENT
- FACTORY OR INDUSTRIAL PLANT
- SAWMILL (STATIONARY)
- GROUP OF STORAGE TANKS (OIL OR GAS)
- OIL OR GAS WELL
- PUMPING STATION
- ROAD STAND FARM PRODUCT SALES
- GRAIN ELEVATOR
- GREENHOUSE
- NURSERY
- GRAVEL PIT
- TOWN HALL, GRANGE OR COMMUNITY HALL
- COUNTY FARM
- POST OFFICE
- HIGHWAY GARAGE
- FIRE ENGINE HOUSE
- GARBAGE DUMP
- POWER SUBSTATION
- RADIO STATION
- SCHOOLHOUSE

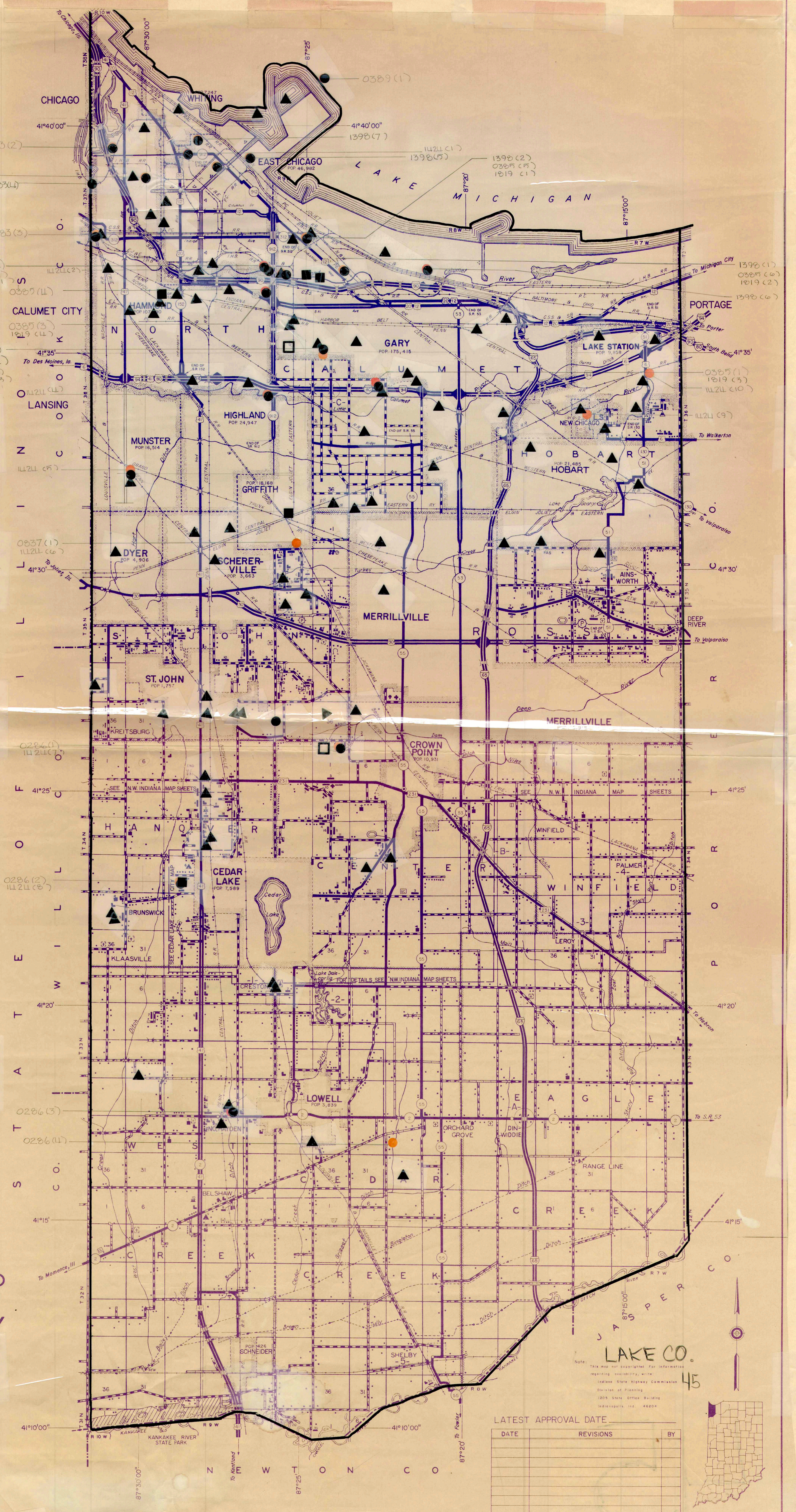
**GENERAL HIGHWAY AND TRANSPORTATION MAP
LAKE COUNTY
INDIANA**

PREPARED BY THE
**STATE HIGHWAY DEPARTMENT OF INDIANA
PLANNING DIVISION**
IN COOPERATION WITH THE
**U.S. DEPARTMENT OF TRANSPORTATION
FEDERAL HIGHWAY ADMINISTRATION**

SCALE-MILES
0 100 200 300 400 500
INSET SCALE- FEET
0 100 200 300
1976

POLYCONIC PROJECTION

MAP CHECKED WITH AERIAL PHOTOGRAPHS DATED OCTOBER 1969



LAKE CO. 45

DATE _____ REVISIONS _____ BY _____

