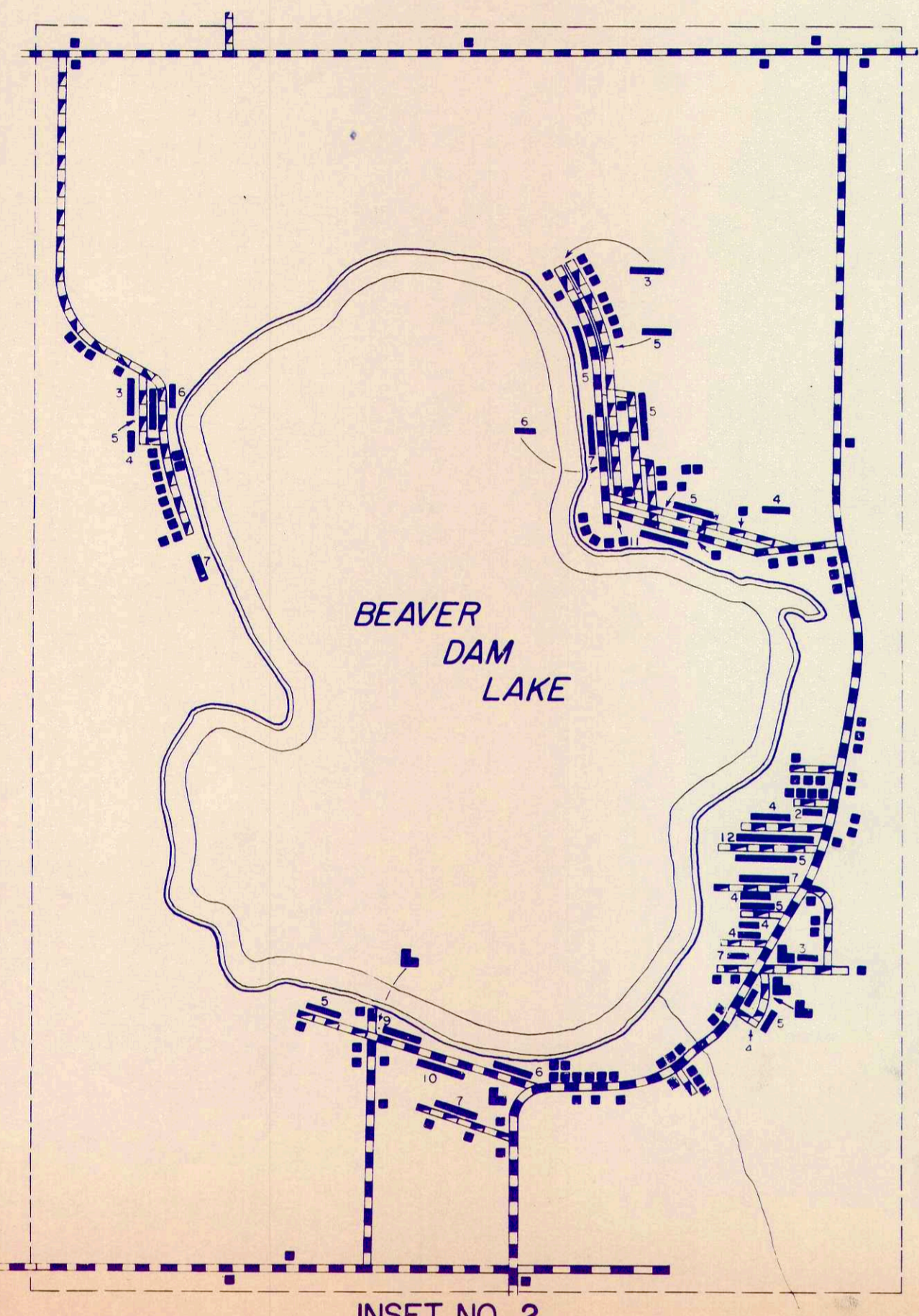
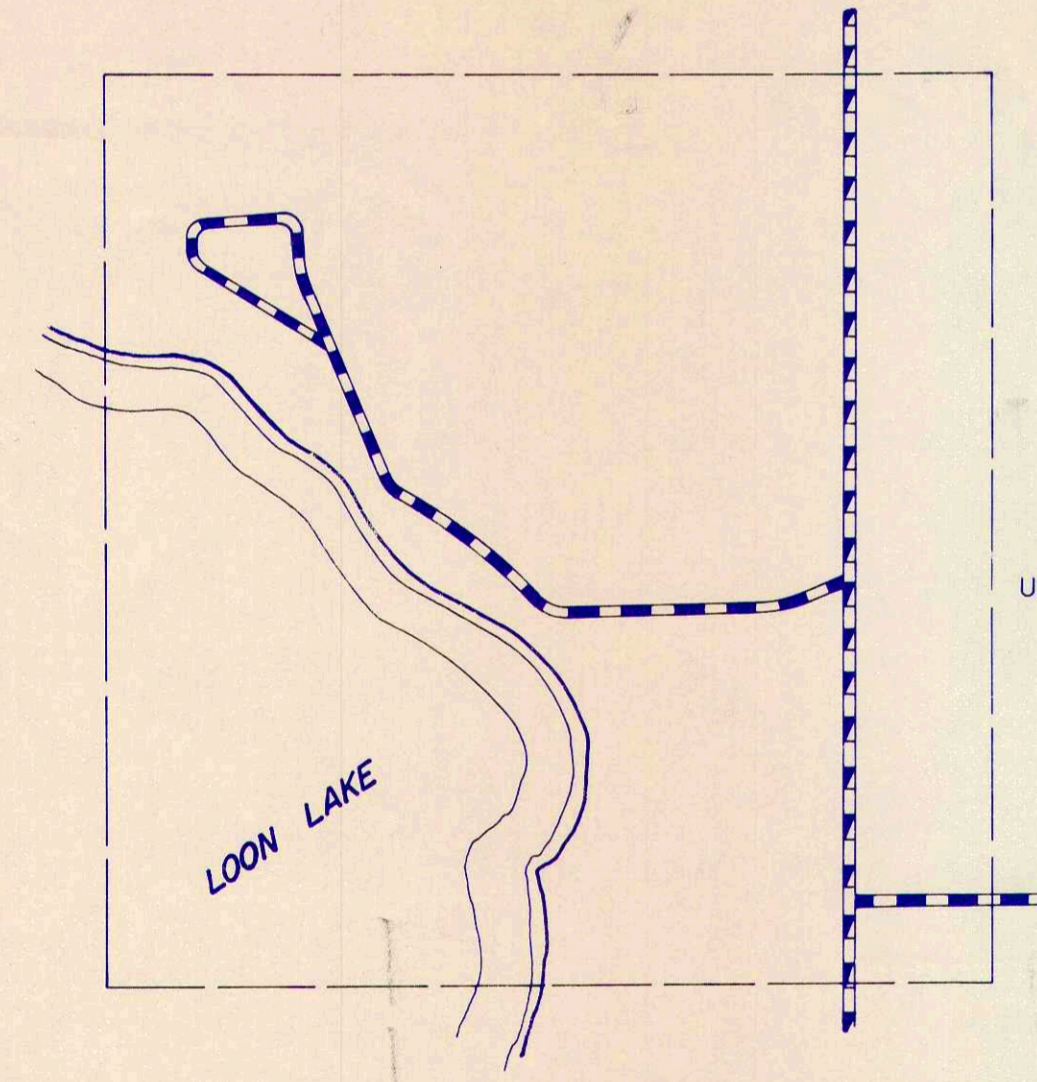


**-3- YELLOW CREEK LAKE**  
UNINCORPORATED AREA  
KOSCIUSKO COUNTY  
INDIANA  
LOCATED IN SEC.  
26, 27, 28, 33, 34, & 35  
T31N - R5E



**INSET NO. 2**  
UNINCORPORATED AREA  
KOSCIUSKO COUNTY  
INDIANA  
LOCATED IN SEC.  
28 & 33 T31N - R5E  
4

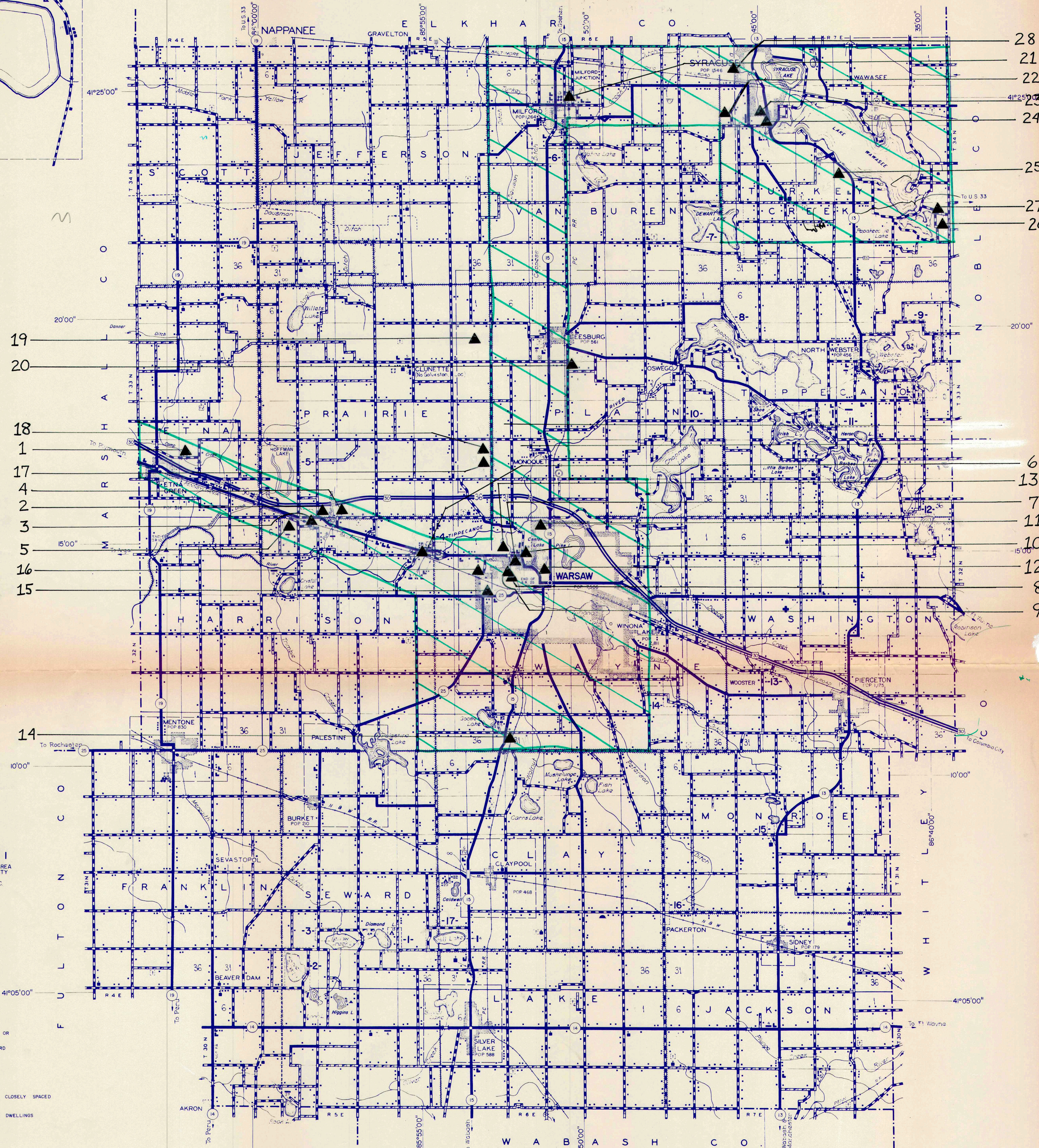


**INSET NO. 1**  
UNINCORPORATED AREA  
KOSCIUSKO COUNTY  
INDIANA  
LOCATED IN SEC.  
25 & 26  
T31N - R5E

**LEGEND**

- INTERSTATE HIGHWAY SYSTEM
- UNITED STATES HIGHWAY
- STATE HIGHWAY SYSTEM
- DIVIDED HIGHWAY
- PAVED ROAD
- BITUMINOUS SURFACED ROAD
- METAL SURFACED ROAD
- GRADED AND DRAINED EARTH ROAD
- UNIMPROVED EARTH ROAD
- INTERCHANGE (LOCATED IN INCORPORATED CITY)
- INTERCHANGE
- HIGHWAY GRADE SEPARATION
- HIGHWAY BRIDGES (OVER 20' SPAN)
- CONCRETE FORD OR DIP
- RAILROAD (ANY NUMBER OF TRACKS, USED BY SINGLE OPERATING COMPANY)
- RAILROAD STATION
- RAILROAD ABOVE
- RAILROAD BELOW
- NARROW STREAM
- WIDE STREAM (ARROWS POINT IN DIRECTION OF FLOW)
- NAVIGABLE STREAM (ARROWS POINT IN DIRECTION OF FLOW)
- DAM WITH ROAD
- DAM WITH LOCK
- DAM WITHOUT ROAD
- LEVEE
- LEVEE WITH ROAD
- TOLL FERRY
- STATE BOUNDARY
- COUNTY LINE
- CIVIL TOWNSHIP LINE
- CORPORATE LINE
- INSET LIMITS
- CONGRESSIONAL TOWNSHIP LINE
- SECTION LINE
- STATE PARK BOUNDARY (NAME SHOWN)
- STATE FOREST OR STATE GAME PRESERVE BOUNDARY
- NATIONAL PARK BOUNDARY (NAME SHOWN)
- NATIONAL PURCHASE UNIT BOUNDARY
- AIRPORT BOUNDARY
- C COMMERCIAL, M MUNICIPAL, OR P PRIVATE AIRPORT
- A ARMY OR U.S. NATIONAL GUARD LANDING FIELD
- STATE CAPITOL
- COUNTY SEAT
- OTHER CITIES AND VILLAGES
- DWELLING OR FARM UNIT
- ROW OR GROUP OF DWELLINGS CLOSELY SPACED
- SEASONAL DWELLING
- ROW OR GROUP OF SEASONAL DWELLINGS
- APARTMENT
- HOTEL
- MOTEL OR TOURIST COURT
- TRAILER COURT
- STORE OR SMALL BUSINESS ESTABLISHMENT
- TOWN HALL OR COMMUNITY HALL
- COMBINED DWELLING AND STORE
- POST OFFICE
- BARRACKS OR QUARTERS FOR STUDENTS, WORKERS, MIGRANTS, ETC.
- SCHOOLHOUSE, OTHER EDUCATIONAL INSTITUTION
- CHURCH, OTHER RELIGIOUS INSTITUTION
- CEMETERY
- CHURCH WITH CEMETERY ADJACENT
- FRESH AIR FARM OR REST HOME
- HOSPITAL
- POLICE STATION
- FIRE ENGINE HOUSE
- ARMORY
- FAIR GROUND, RACE COURSE OR SPEEDWAY
- WAREHOUSE—GENERAL
- FACTORY OR INDUSTRIAL PLANT
- GASOLINE OR PUMPING STATION (GENERAL)
- PUMPING STATION (GAS OR OIL)
- HIGHWAY GARAGE
- POWER PLANT
- BOOSTER STATION
- RADIO STATION (WITH CALL LETTERS)
- RADIO RANGE STATION
- TELEVISION RELAY STATION
- AGRICULTURAL EXPERIMENT STATION
- COUNTY FARM
- STOCK YARD
- GRAIN ELEVATOR
- NURSERY
- FRUIT OR NUT ORCHARD
- GREENHOUSE
- CORRECTIONAL INSTITUTION
- CAMP OR LODGE
- OBSERVATION OR LOOKOUT TOWER
- SAWMILL (STATIONARY)
- DRIVE-IN THEATRE
- RIFLE CLUB
- GOLF COURSE OR COUNTRY CLUB
- SMALL PARK
- WAYSIDE PARK
- BATHING BEACH OR SWIMMING POOL
- PICNIC GROUND
- PLAYGROUND, BALL FIELD, ETC.
- SCENIC SITE
- MINE, QUARRY OR OPEN CUT
- OIL OR GAS WELLS
- GROUP OF STORAGE TANKS (OIL OR GAS)
- QUARRY
- GRAVEL PIT
- GARBAGE OR RUBBISH DUMP

INSET SCALE—FEET  
0 100 200 300



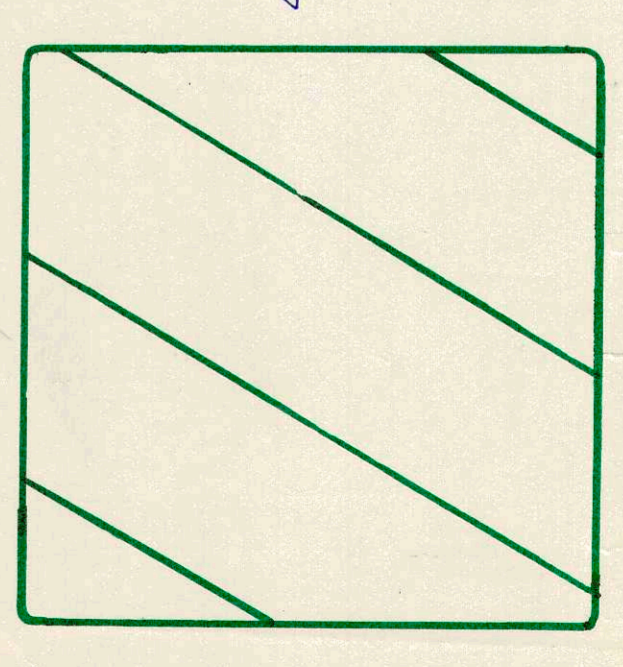
**GENERAL HIGHWAY AND TRANSPORTATION MAP  
KOSCIUSKO COUNTY  
INDIANA**

PREPARED BY THE  
DIVISION OF PLANNING  
INDIANA STATE HIGHWAY COMMISSION  
IN COOPERATION WITH THE  
U. S. DEPARTMENT OF TRANSPORTATION  
FEDERAL HIGHWAY ADMINISTRATION  
BUREAU OF PUBLIC ROADS

SCALE—MILES  
0 1 2 3 4 5

1976

POLYGONIC PROJECTION  
MAP CHECKED WITH AERIAL PHOTOGRAPHS DATED 5 / 76



**COVERAGE OF  
AERIAL SEARCH**

B.P.R. APPROVAL DATE \_\_\_\_\_

DATE	REVISIONS	BY

Note: This map was copyrighted for information regarding availability, write:  
Indiana State Highway Commission  
Division of Planning  
1005 State Office Building  
Indianapolis, Ind. 46204

