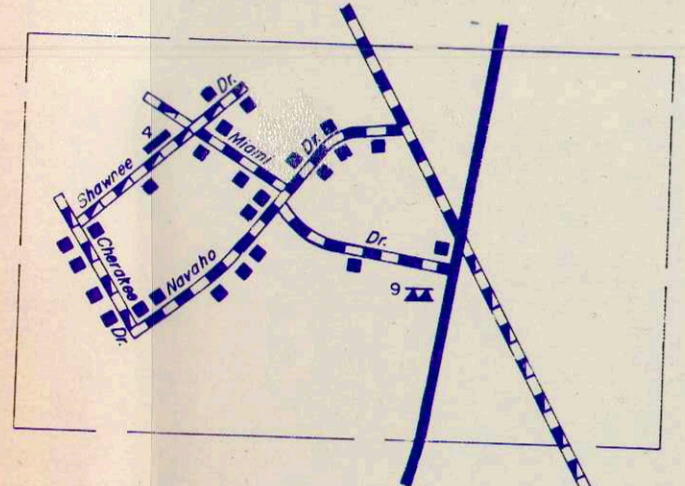
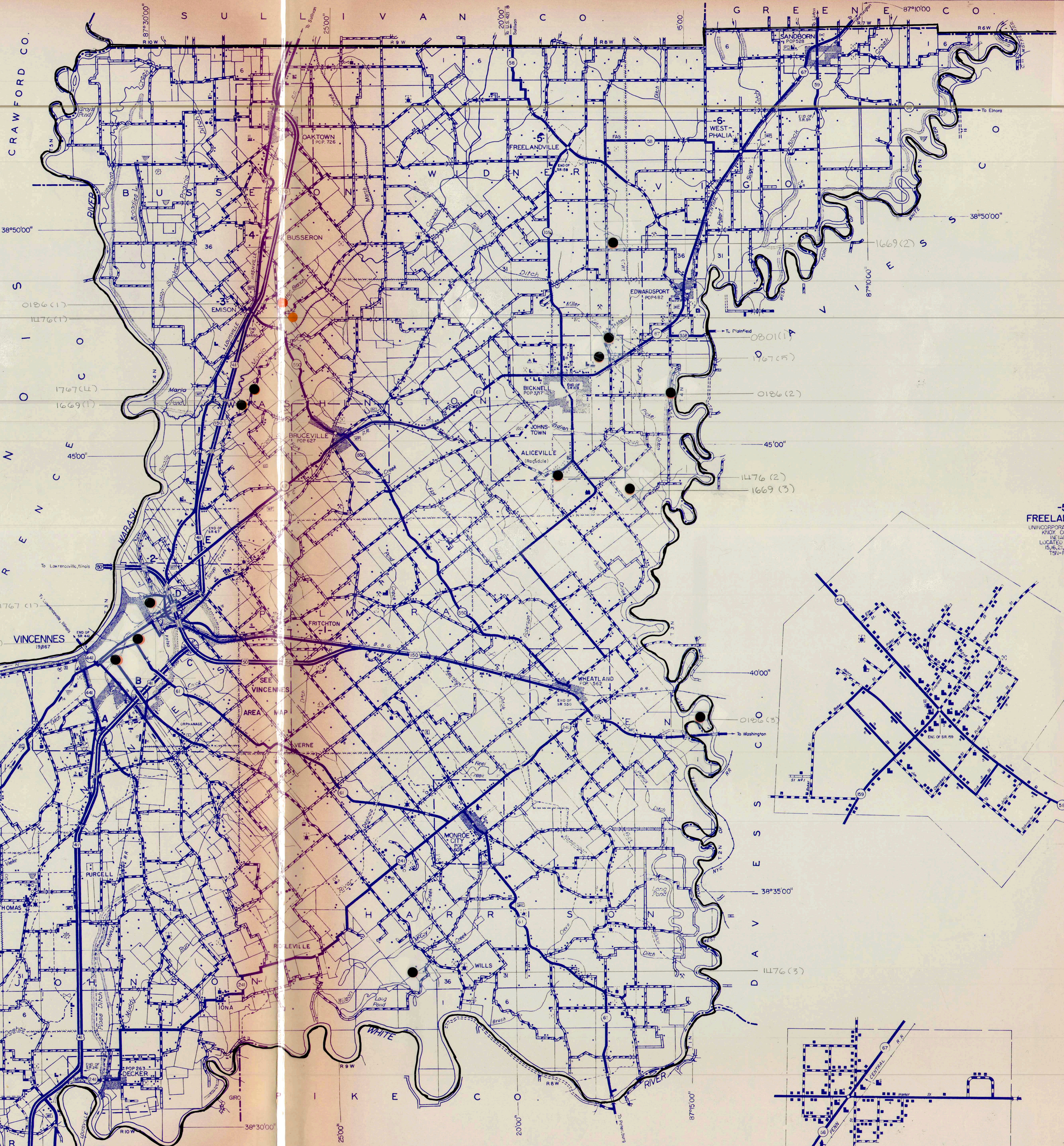


LEGEND

- DIVIDED HIGHWAY
- PAVED ROAD
- BITUMINOUS SURFACED ROAD
- METAL SURFACED ROAD
- GRADED AND DRAINED EARTH ROAD
- UNIMPROVED EARTH ROAD
- UNITED STATES HIGHWAY
- STATE HIGHWAY SYSTEM
- FEDERAL AID PRIMARY HIGHWAY
- FEDERAL AID SECONDARY HIGHWAY
- BRIDGE SEPARATION
- COUNTY SEAT
- OTHER CITIES AND VILLAGES
- GOLF COURSES OR COUNTRY CLUB
- ATHLETIC FIELDS OR AMUSEMENT PARKS
- SMALL PARKS (SP STATE, CP COUNTY, P UNCLASSIFIED OR MP MUNICIPAL)
- UNCLASSIFIED OR MP MUNICIPAL
- FAIR GROUNDS, RACE COURSES, SPEEDWAYS
- CEMETERY
- DWELLING OR FARM UNIT
- ROW OR GROUP OF DWELLINGS CLOSELY SPACED
- SEASONAL DWELLING
- ROW OR GROUP OF SEASONAL DWELLINGS
- STORE OR SMALL BUSINESS ESTABLISHMENT
- TOWN HALL, GRANGE OR COMMUNITY HALL
- HOTEL
- CHURCH, OTHER RELIGIOUS INSTITUTIONS
- SCHOOLHOUSE, OTHER EDUCATIONAL INSTITUTIONS
- HOSPITALS
- CORRECTIONAL INSTITUTIONS
- FACTORY OR INDUSTRIAL PLANTS
- CAMP OR LODGE
- SAWMILL (STATIONARY)
- WINE, QUARRY OR OPEN CUT
- WELLS OR GAS WELLS
- OIL TANKS
- POWER PLANT
- RAILROAD STATION
- FIRE TOWER
- COMMERCIAL, M MUNICIPAL OR P PRIVATE AIRPORT

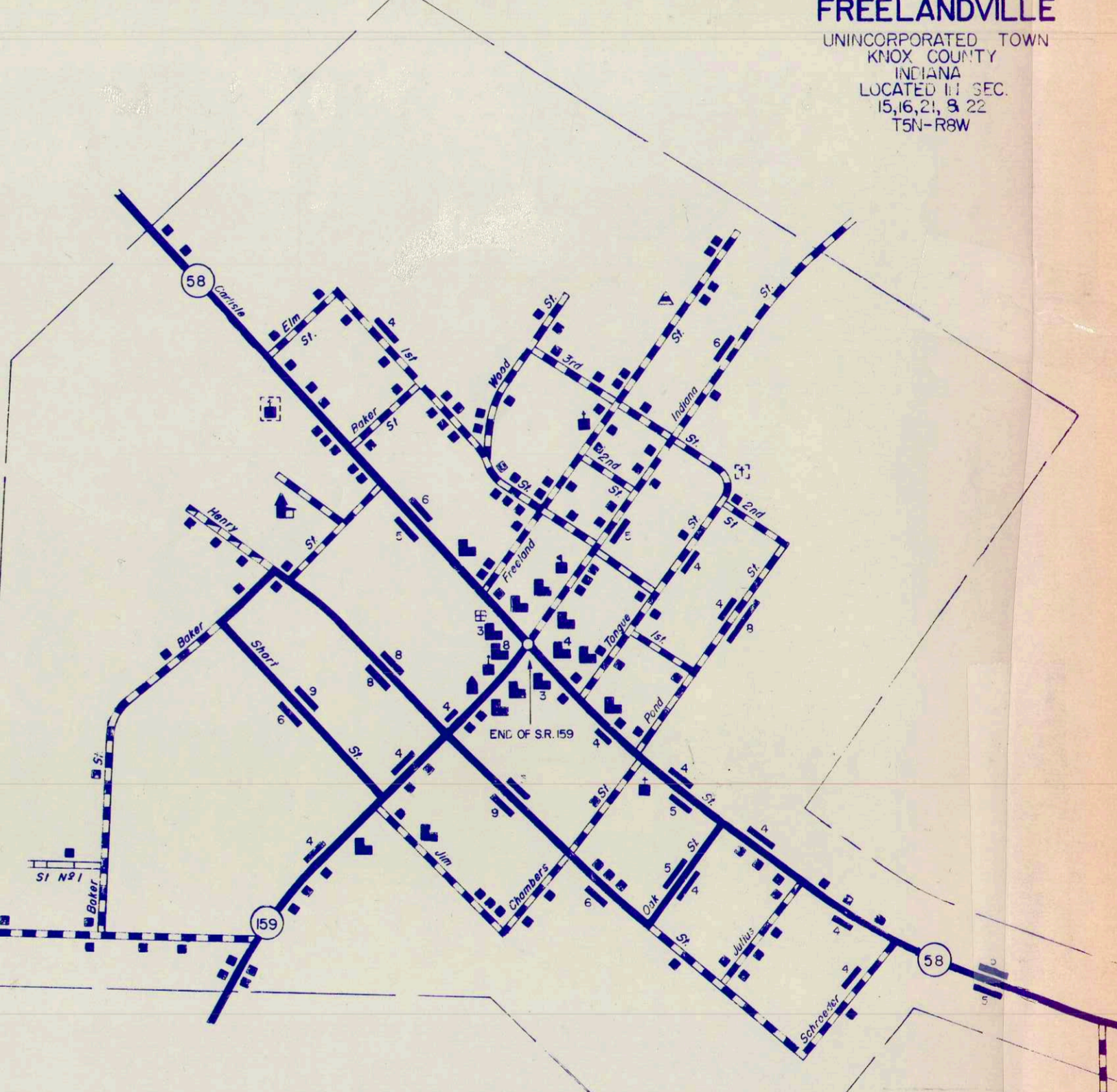


INSET NO. 2
UNINCORPORATED TOWN AREA
KNOX COUNTY, INDIANA
LOCATED IN SEC. 15, 16, 17, 18, 19, 20, 21, 22, 23, 24, 25, 26, 27, 28, 29, 30, 31, 32, 33, 34, 35, 36, 37, 38, 39, 40, 41, 42, 43, 44, 45, 46, 47, 48, 49, 50, 51, 52, 53, 54, 55, 56, 57, 58, 59, 60, 61, 62, 63, 64, 65, 66, 67, 68, 69, 70, 71, 72, 73, 74, 75, 76, 77, 78, 79, 80, 81, 82, 83, 84, 85, 86, 87, 88, 89, 90, 91, 92, 93, 94, 95, 96, 97, 98, 99, 100

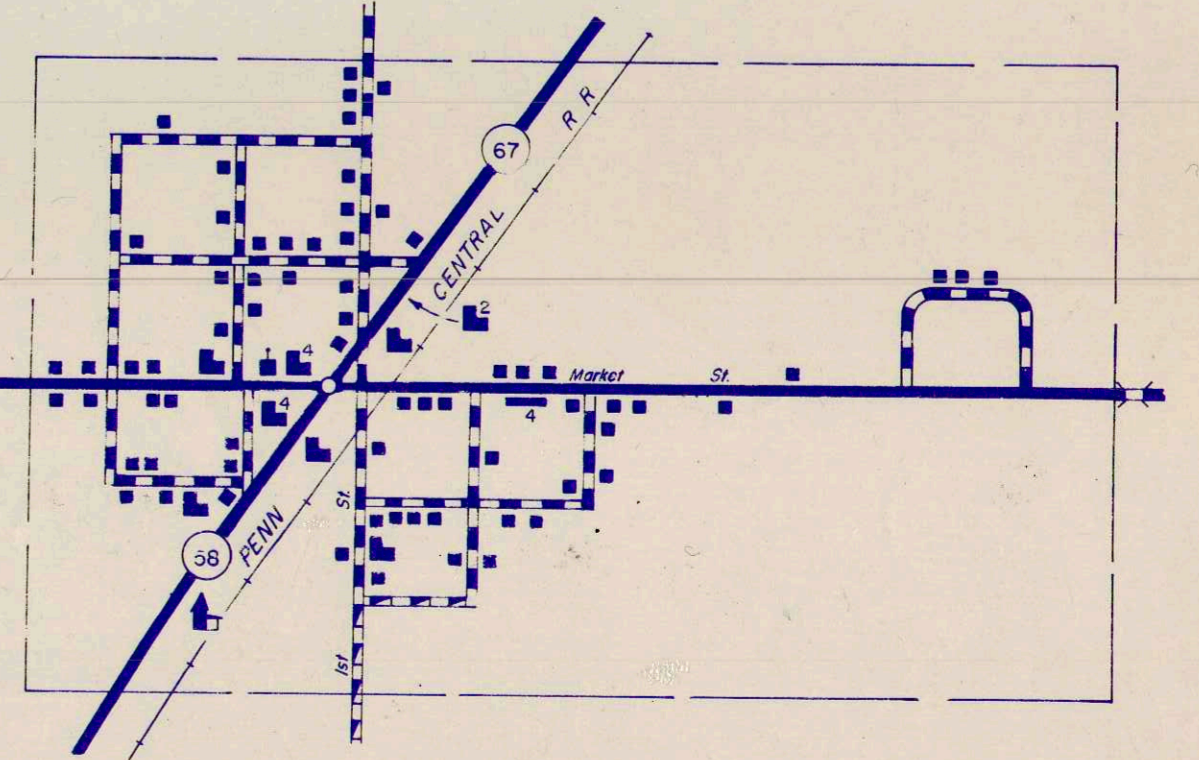
-3- EMISON
UNINCORPORATED TOWN
KNOX COUNTY, INDIANA
LOCATED IN SEC. 15, 16, 17, 18, 19, 20, 21, 22, 23, 24, 25, 26, 27, 28, 29, 30, 31, 32, 33, 34, 35, 36, 37, 38, 39, 40, 41, 42, 43, 44, 45, 46, 47, 48, 49, 50, 51, 52, 53, 54, 55, 56, 57, 58, 59, 60, 61, 62, 63, 64, 65, 66, 67, 68, 69, 70, 71, 72, 73, 74, 75, 76, 77, 78, 79, 80, 81, 82, 83, 84, 85, 86, 87, 88, 89, 90, 91, 92, 93, 94, 95, 96, 97, 98, 99, 100

-1- FRITCHTON
UNINCORPORATED TOWN
KNOX COUNTY, INDIANA
LOCATED IN SEC. 15, 16, 17, 18, 19, 20, 21, 22, 23, 24, 25, 26, 27, 28, 29, 30, 31, 32, 33, 34, 35, 36, 37, 38, 39, 40, 41, 42, 43, 44, 45, 46, 47, 48, 49, 50, 51, 52, 53, 54, 55, 56, 57, 58, 59, 60, 61, 62, 63, 64, 65, 66, 67, 68, 69, 70, 71, 72, 73, 74, 75, 76, 77, 78, 79, 80, 81, 82, 83, 84, 85, 86, 87, 88, 89, 90, 91, 92, 93, 94, 95, 96, 97, 98, 99, 100

INTERCHANGE E



-5- FREELANDVILLE
UNINCORPORATED TOWN
KNOX COUNTY, INDIANA
LOCATED IN SEC. 15, 16, 17, 18, 19, 20, 21, 22, 23, 24, 25, 26, 27, 28, 29, 30, 31, 32, 33, 34, 35, 36, 37, 38, 39, 40, 41, 42, 43, 44, 45, 46, 47, 48, 49, 50, 51, 52, 53, 54, 55, 56, 57, 58, 59, 60, 61, 62, 63, 64, 65, 66, 67, 68, 69, 70, 71, 72, 73, 74, 75, 76, 77, 78, 79, 80, 81, 82, 83, 84, 85, 86, 87, 88, 89, 90, 91, 92, 93, 94, 95, 96, 97, 98, 99, 100



6 WESTPHALIA
UNINCORPORATED TOWN
KNOX COUNTY, INDIANA
LOCATED IN SEC. 15, 16, 17, 18, 19, 20, 21, 22, 23, 24, 25, 26, 27, 28, 29, 30, 31, 32, 33, 34, 35, 36, 37, 38, 39, 40, 41, 42, 43, 44, 45, 46, 47, 48, 49, 50, 51, 52, 53, 54, 55, 56, 57, 58, 59, 60, 61, 62, 63, 64, 65, 66, 67, 68, 69, 70, 71, 72, 73, 74, 75, 76, 77, 78, 79, 80, 81, 82, 83, 84, 85, 86, 87, 88, 89, 90, 91, 92, 93, 94, 95, 96, 97, 98, 99, 100

**GENERAL HIGHWAY AND TRANSPORTATION MAP
KNOX COUNTY
INDIANA**

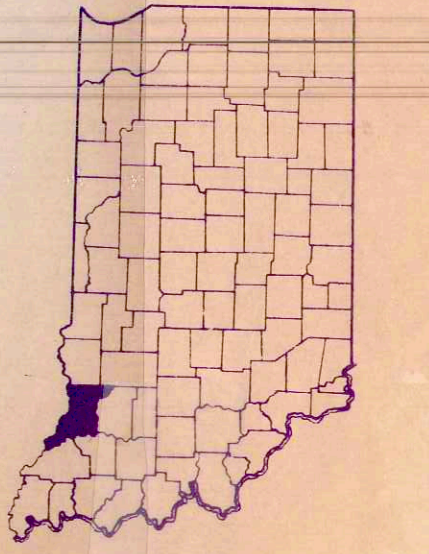
PREPARED BY THE
INDIANA STATE HIGHWAY COMMISSION
DIVISION OF PLANNING
IN COOPERATION WITH THE
U.S. DEPARTMENT OF TRANSPORTATION
FEDERAL HIGHWAY ADMINISTRATION

SCALE - MILES

1977

B.P.R. APPROVAL DATE

DATE	REVISIONS	BY



KNOX CO. 42