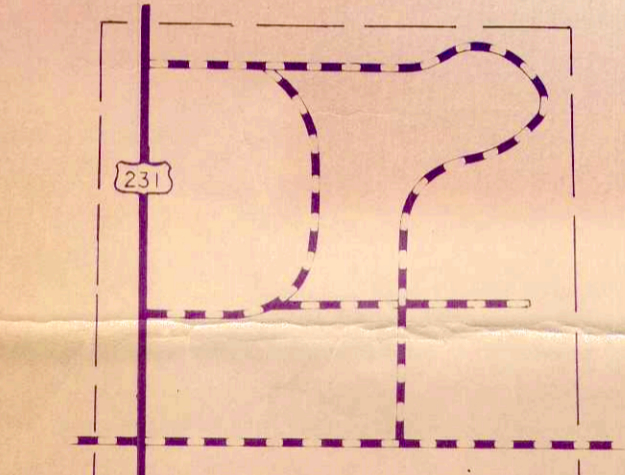
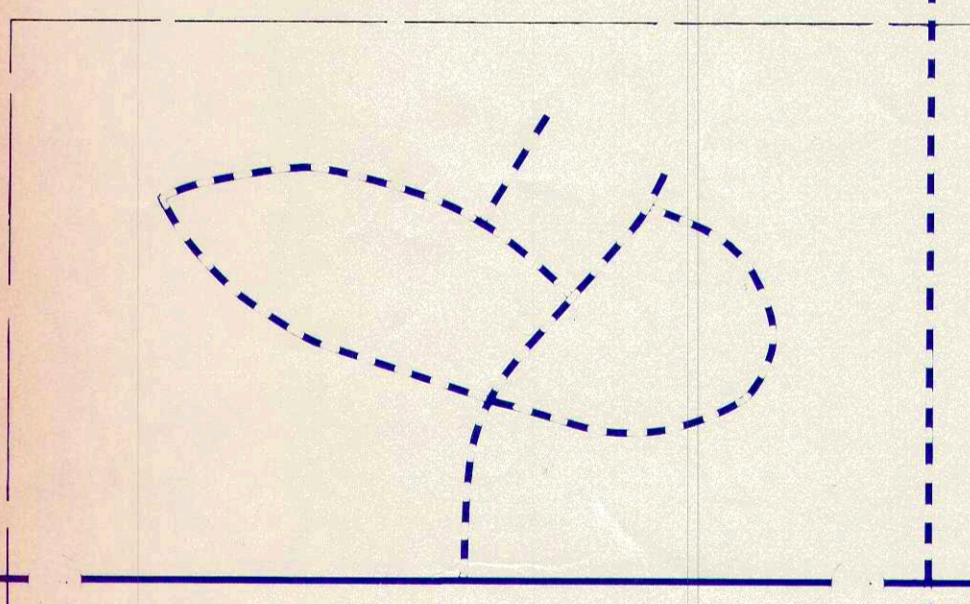


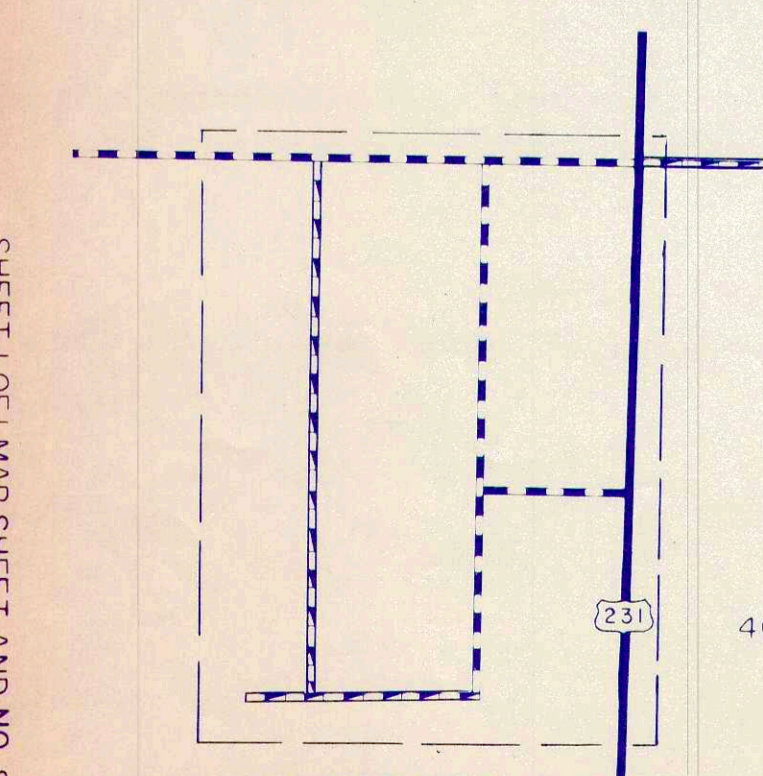
-4-
PARR
UNINCORPORATED TOWN
JASPER COUNTY
INDIANA
LOCATED IN SEC. 2, 22 & 28
T. 30N - R. 7W



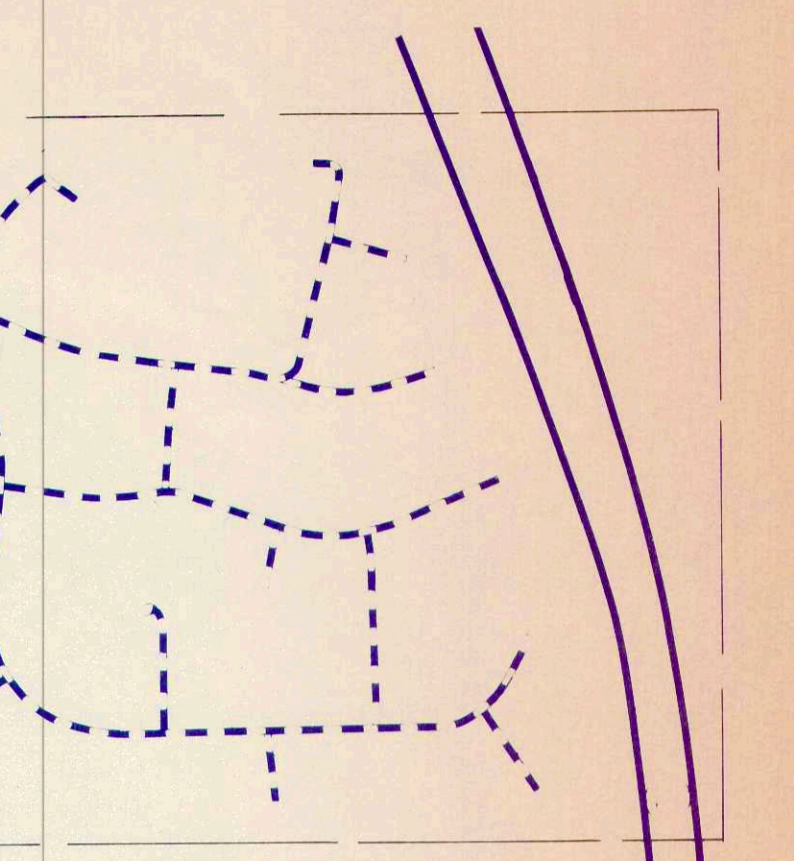
INSET NO. 3
UNINCORPORATED AREA
JASPER COUNTY
INDIANA
LOCATED IN SEC. 7
T. 29N - R. 7W



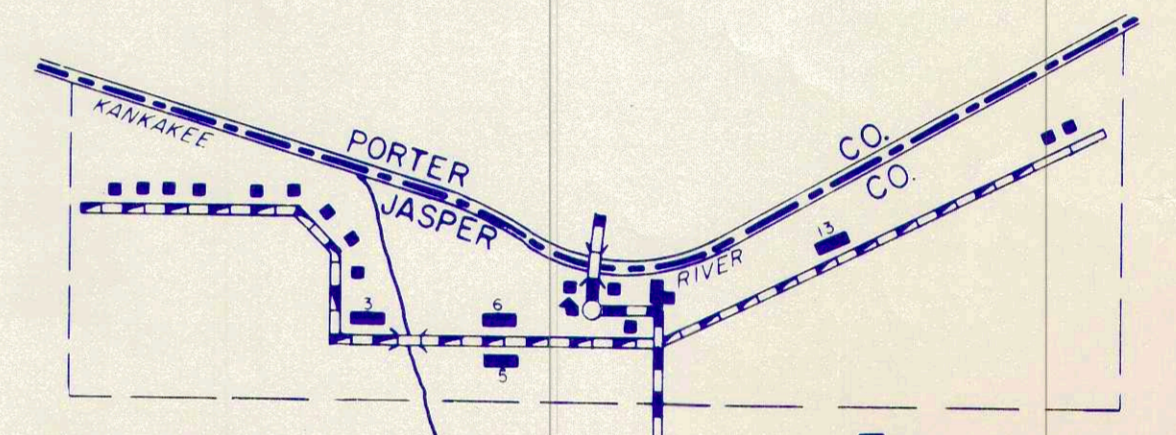
INSET NO. 2
UNINCORPORATED AREA
JASPER COUNTY
INDIANA
LOCATED IN SEC. 20
T. 29N - R. 7W



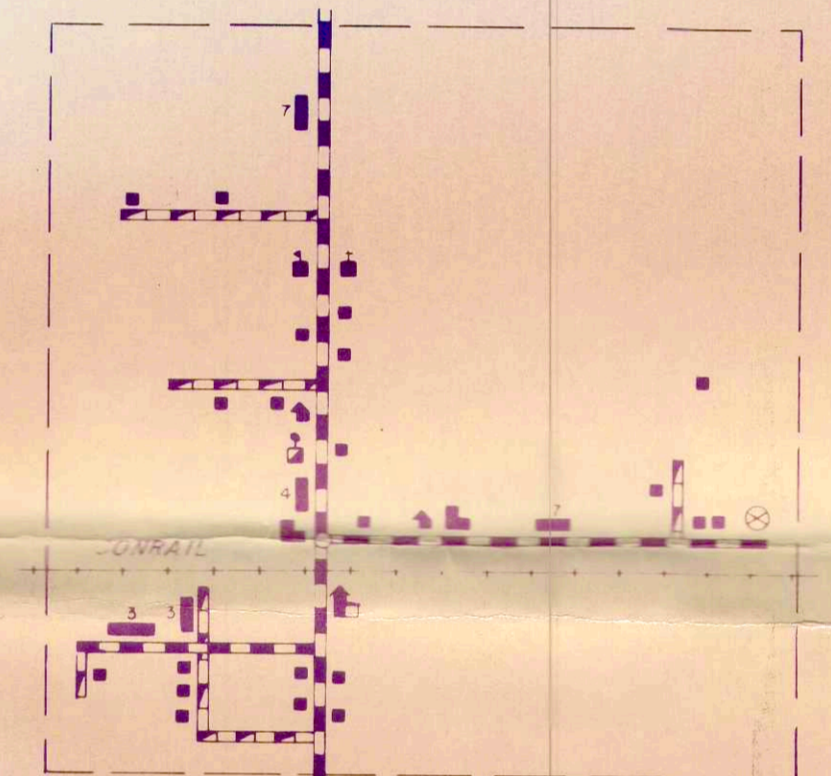
INSET NO. 1
UNINCORPORATED AREA
JASPER COUNTY
INDIANA
LOCATED IN SEC. 1
T. 28N - R. 7W



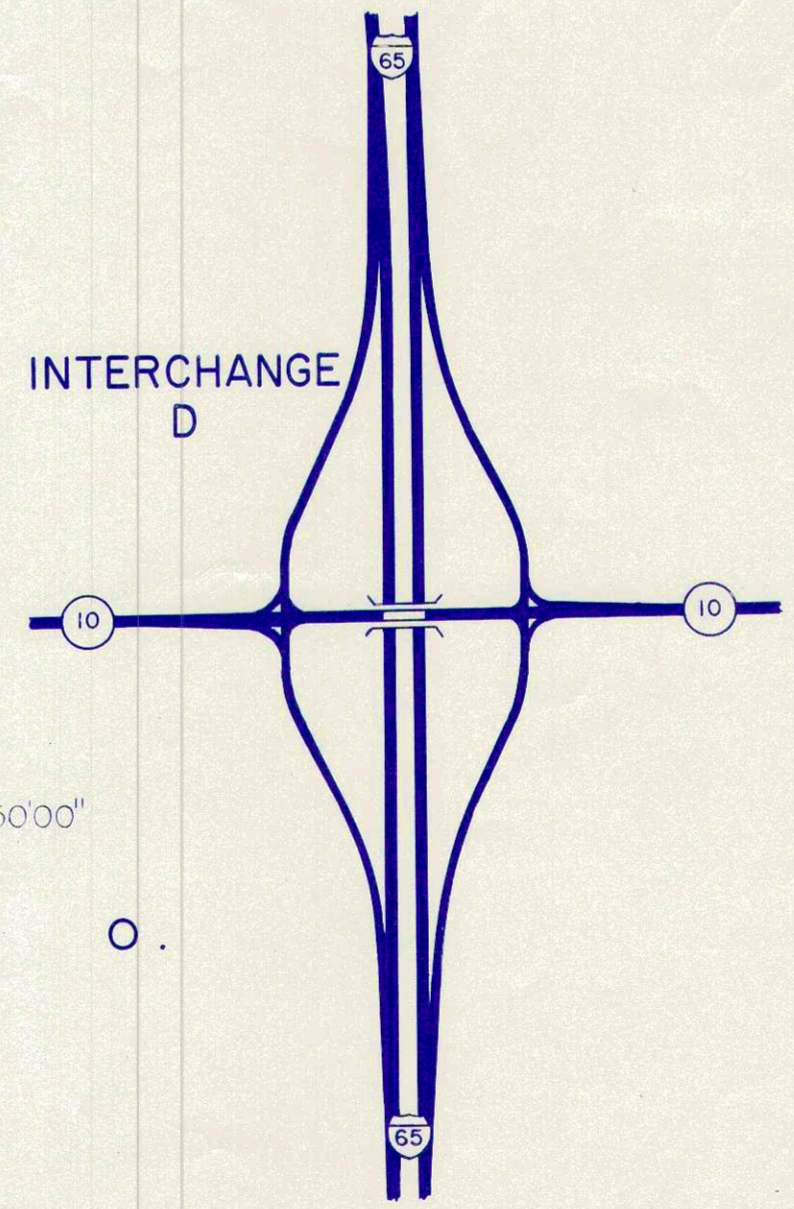
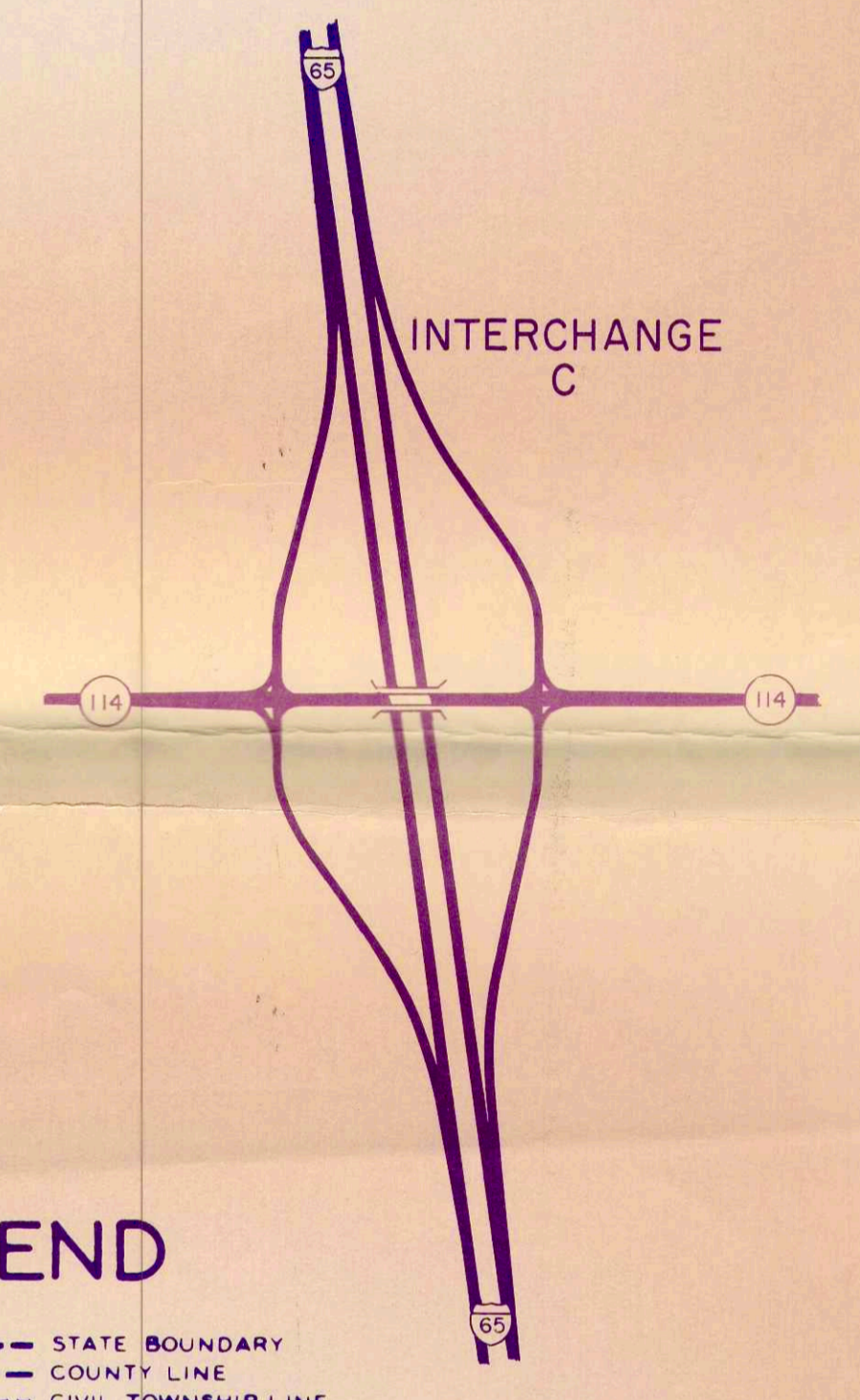
INSET NO. 6
UNINCORPORATED AREA
JASPER COUNTY
INDIANA
LOCATED IN SEC. 7
T. 31N - R. 7W



-7-
DUNNS BRIDGE
UNINCORPORATED TOWN
JASPER COUNTY
INDIANA
LOCATED IN SEC. 4 & 5
T. 32N - R. 5W



-8-
TEFFT
UNINCORPORATED TOWN
JASPER COUNTY
INDIANA
LOCATED IN SEC. 26 & 27
T. 32N - R. 5W



LEGEND

- PAVED ROAD
- BITUMINOUS SURFACED ROAD
- METAL SURFACED ROAD
- GRADED AND DRAINED EARTH ROAD
- UNIMPROVED EARTH ROAD
- UNITED STATES HIGHWAY
- STATE HIGHWAY SYSTEM
- STATE BOUNDARY
- COUNTY LINE
- CIVIL TOWNSHIP LINE
- CORPORATE LINE
- CONGRESSIONAL TOWNSHIP LINE
- SECTION LINE
- MICHIGAN ROAD LAND SECTION
- STATE PARK BOUNDARY (NAME SHOWN)
- STATE FOREST OR STATE GAME PRESERVE BOUNDARY
- NATIONAL PARK BOUNDARY (NAME SHOWN)
- NATIONAL PURCHASE UNIT BOUNDARY
- COUNTY SEAT
- OTHER CITIES AND VILLAGES
- GOLF COURSE OR COUNTRY CLUB
- ATHLETIC FIELD OR AMUSEMENT PARK
- SMALL PARK (SP STATE, CP COUNTY, P UNCLASSIFIED OR WM MUNICIPAL)
- FAIR GROUNDS, RACE COURSE, SPOREWAY, CEMETERY
- DEWELLING OR FARM UNIT
- ROW OR GROUP OF DWELLINGS CLOSELY SPACED
- SEASONAL DWELLING
- ROW OR GROUP OF SEASONAL DWELLINGS
- STORE OR SMALL BUSINESS ESTABLISHMENT
- TOWN HALL, GRANGE OR COMMUNITY HALL
- HOTEL
- CHURCH, OTHER RELIGIOUS INSTITUTIONS
- SCHOOLHOUSE, OTHER EDUCATIONAL INSTITUTION
- CORRECTIONAL INSTITUTION
- HOSPITAL
- FACTORY OR INDUSTRIAL PLANT
- CAMP OR LODGE
- SAWMILL (STATIONARY)
- MINE, QUARRY OR OPEN CUT
- OIL OR GAS WELLS
- OIL TANKS
- POWER PLANT
- RADIO STATION
- COMBINED DWELLING AND STORE
- DRAIN, BIVOUAC (MULTIPLE UNITS)
- GRAIN ELEVATOR
- PUMPING STATION (GENERAL)
- C. COMMERCIAL, M. MUNICIPAL OR P. PRIVATE AIRPORT
- MARKED AUXILIARY AIRPORT
- ARMY OR NATIONAL GUARD
- LANDING FIELD
- GAS OR OIL PUMPING STATION
- POWER BOOSTER STATION
- RIFLE OR GUN CLUB
- RAILROADIANY NUMBER OF TRACKS/USED BY SINGLE OPERATING COMPANY
- RAILROADIANY NUMBER OF TRACKS/USED BY MORE THAN ONE OPERATING COMPANY ON SAME OR ADJACENT RIGHTS OF WAY (NOT TRACKAGE RIGHTS)
- ELECTRIC INTERURBAN OR SUBURBAN RAILROAD
- RAILROAD STATION
- REVENUE STOPPING STATION
- RAILROAD ABOVE
- RAILROAD BELOW
- HIGHWAY GARAGE
- NARROW STREAM
- WIDE STREAM
- NAVIGABLE STREAM (ARROWS POINT IN DIRECTION OF FLOW)
- POST OFFICE
- COMBINED DWELLING AND POST OFFICE
- TRAILER PARK
- BATHING BEACH OR SWIMMING POOL
- DRAINAGE DITCH (MAIN)
- ARROWS POINT IN DIRECTION OF FLOW
- HIGHWAY BRIDGES (OVER 20' SPAN)
- BRIDGE BRIDGES FOR LONG RIVER CROSSINGS
- DAM WITH ROAD
- DAM WITHOUT ROAD
- DAM WITH LOCK
- LEVEE
- LEVEE WITH ROAD
- FORD ROAD ESTABLISHED
- FORD-PRIMITIVE ROAD
- SHOULDER TOLL FERRY
- STOCK FIELDS
- MIGRANT WORKER DWELLINGS
- SEASONAL INDUSTRY

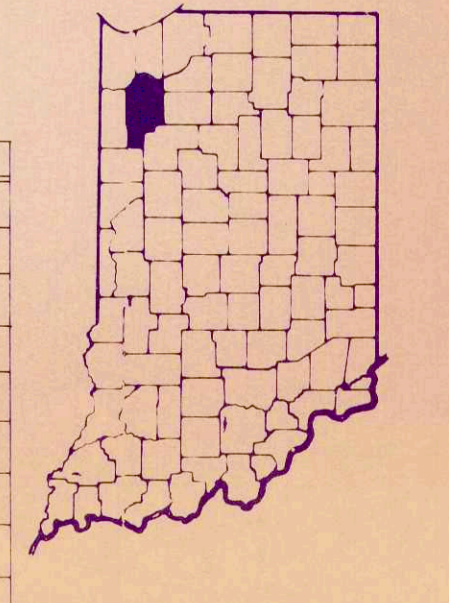
**GENERAL HIGHWAY AND TRANSPORTATION MAP
JASPER COUNTY
INDIANA**

PREPARED BY THE
INDIANA STATE HIGHWAY COMMISSION
DIVISION OF PLANNING
IN COOPERATION WITH THE
U.S. DEPARTMENT OF TRANSPORTATION
FEDERAL HIGHWAY ADMINISTRATION

DECEMBER 31, 1978

APPROVAL DATE

DATE	REVISIONS	BY



INSET SCALE - FEET

SCALE - MILES

POLYCONIC PROJECTION

MAP CHECKED WITH AERIAL PHOTOGRAPHS DATED 5-13-77

GENERAL HIGHWAY AND TRANSPORTATION MAP
SHEET 1 OF 10 MAP SHEET AND NO SUPPLEMENTAL SHEETS
JASPER COUNTY
INDIANA
37