

HUNTINGTON CO.
35

GENERAL HIGHWAY AND TRANSPORTATION MAP
HUNTINGTON COUNTY
INDIANA

PREPARED BY THE
DIVISION OF PLANNING
INDIANA STATE HIGHWAY COMMISSION
IN COOPERATION WITH
U. S. DEPARTMENT OF TRANSPORTATION
FEDERAL HIGHWAY ADMINISTRATION

SCALE - MILES
0 0.5 1 1.5 2 2.5 3 3.5 4 4.5 5 5.5 6

SCALE - FEET
0 100 200 300 400 500 600 700 800 900 1000

MAP CHECKED WITH AERIAL PHOTOGRAPHS DATED 1978

DEC. 31, 1978

POLYCONIC PROJECTION

SHEET 1 OF 1 MAP SHEET AND
NO. SUPPLEMENTAL SHEETS

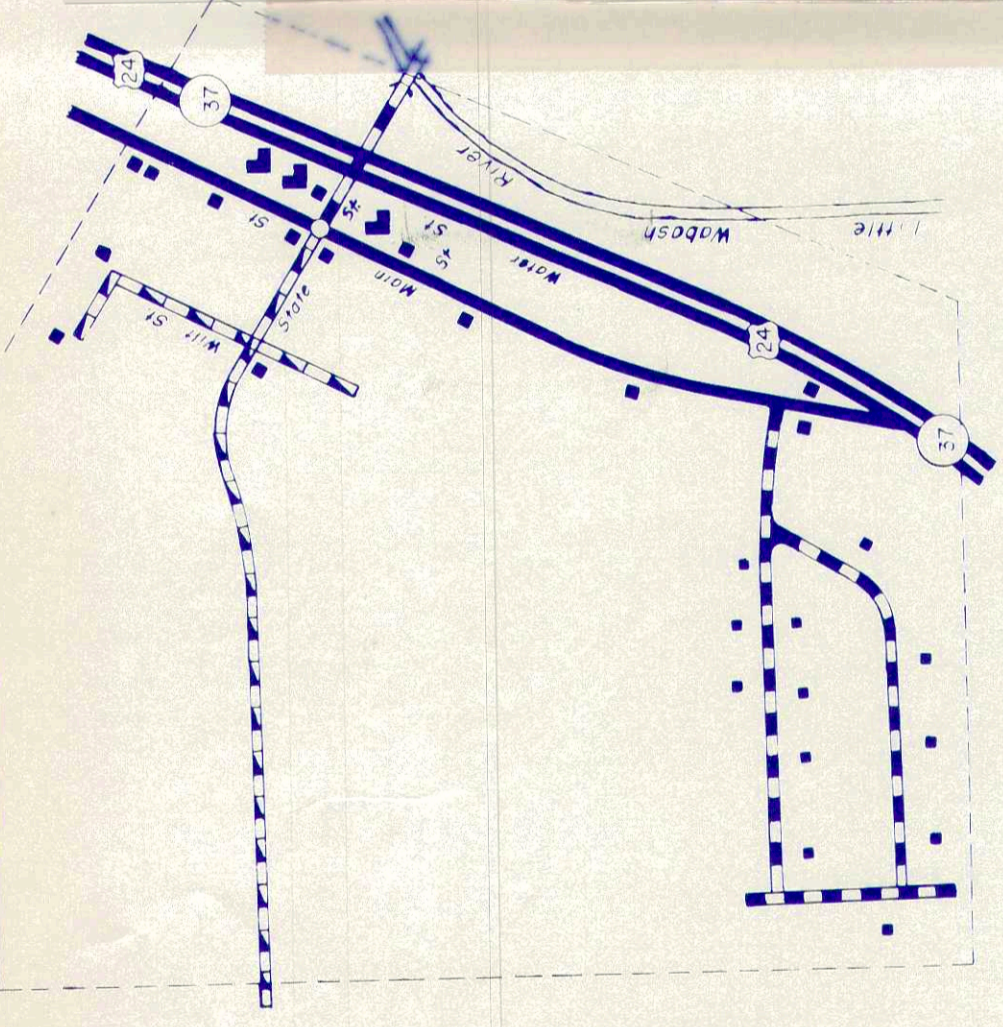
GENERAL HIGHWAY AND TRANSPORTATION MAP
HUNTINGTON COUNTY
INDIANA 35

APPROVAL DATE

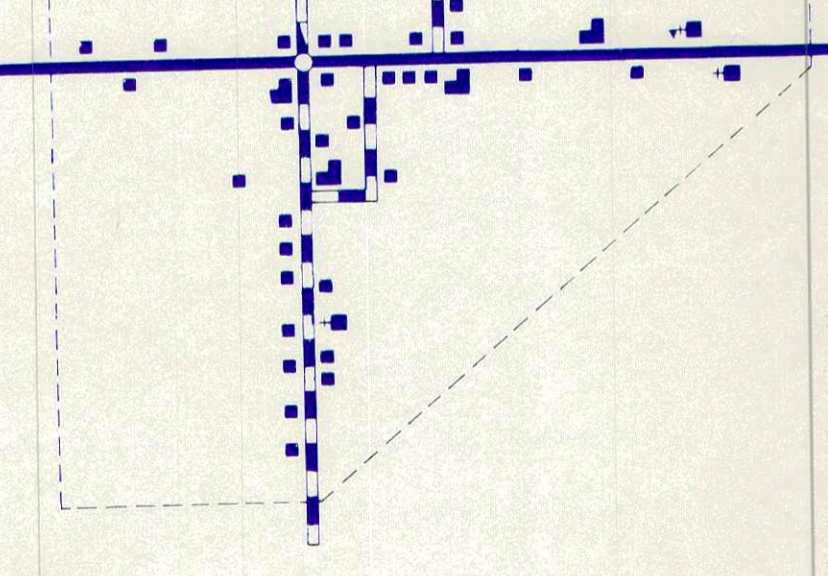
DATE	REVISIONS	BY

LEGEND

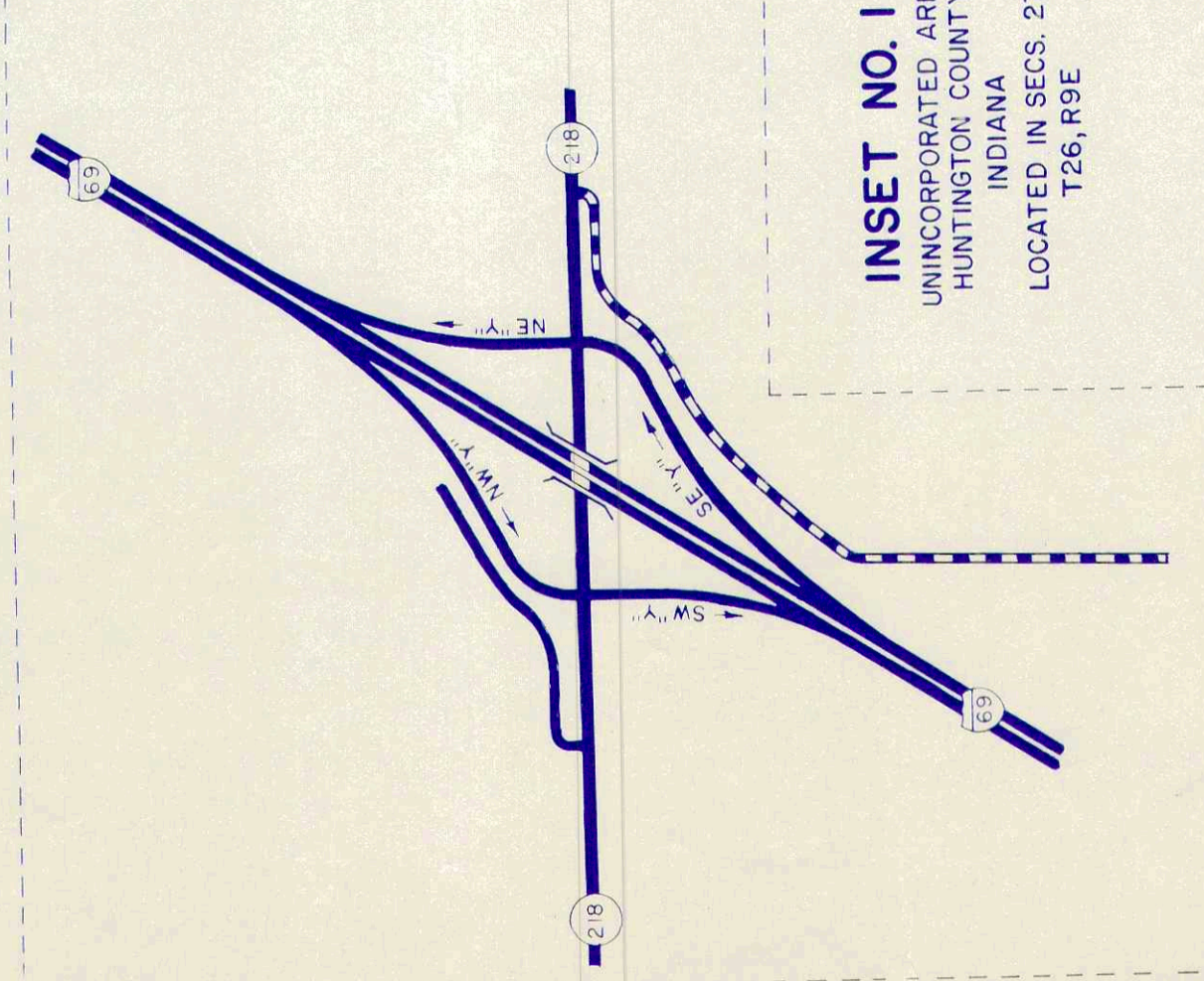
- INTERSTATE HIGHWAY SYSTEM
- UNITED STATES HIGHWAY
- STATE HIGHWAY SYSTEM
- DIVIDED HIGHWAY
- PAVED ROAD
- BITUMINOUS SURFACED ROAD
- ROAD WITH GRAVEL SURFACE
- GRADED AND DRENCH ROAD
- UNIMPROVED ROAD
- INTERCHANGE LOCATED IN INCORPORATED CITY
- INTERCHANGE
- ROADWAY GRADE SEPARATION
- HORWAY BRIDGE (OVER 20 SPAN)
- CONCRETE FORD OR DIP
- FORD - ROAD ESTABLISHED
- RAILROADS (ANY NUMBER OF TRACKS) USED BY SINGLE OPERATING COMPANY
- RAILROAD STATION
- RAILROAD ABOVE
- RAILROAD BELOW
- NARROW STREAM
- WIDE STREAM
- WIDE STREAM (IN DIRECTION OF FLOW)
- WIDE STREAM (IN DIRECTION OF FLOW) (ARROWS POINT IN DIRECTION OF FLOW)
- DAM WITH ROAD
- DAM WITH LOCK
- POST OFFICE
- BARBERS OR DORMITORIES FOR STUDENTS, WORKERS, MIGRANTS, ETC.
- SCHOOLS, OTHER EDUCATIONAL INSTITUTIONS
- CEMETERY
- CHURCH WITH CEMETERY ADJACENT
- FRESH AIR FARM OR REST HOME
- POLICE STATION
- HOSPITAL
- FIRE ENGINE HOUSE
- FARM HOUSE, RACE COURSE OR SPEEDWAY
- WAREHOUSE - GENERAL
- FACTORY OR INDUSTRIAL PLANT
- BARRING OR PUMPING STATION (GENERAL)
- PUMPING STATION (GAS OR OIL)
- POWER PLANT
- BOILER STATION
- RADIO STATION WITH CALL LETTERS
- RADIO RANGE STATION
- TELEVISION RELAY STATION
- AGRICULTURAL EXPERIMENT STATION
- COUNTY FARM
- STOCK YARD
- GRAIN ELEVATOR
- NURSERY
- FRUIT OR NUT ORCHARD
- GREENHOUSE
- CAMP OR LODGE
- OBSERVATION OR LOOKOUT TOWER
- SMALL (STATIONARY)
- LIKE WITHOUT ROAD
- LEAVE WITH ROAD
- LOCK FERRY
- STATE BOUNDARY
- COUNTY LINE
- CORPORATE LINE
- SECTION LINE
- TOWNSHIP LINE
- STATE FOREST OR STATE GAME PRESERVE BOUNDARY
- NATIONAL PARK BOUNDARY (NAME SHOWN)
- NATIONAL PURCHASE UNIT BOUNDARY
- COMMERCIAL AIRPORT
- ARMY OR NATIONAL GUARD
- STATE CRUEL
- OTHER CITIES AND VILLAGES
- OTHER CITIES AND VILLAGES
- DWELLINGS OR FARM UNIT
- SEASONAL DWELLINGS CLOSELY SPACED
- ROW OR GROUP OF DWELLINGS
- APARTMENT
- MOTEL OR TOURIST COURT
- TRAILER COURT
- STORE OR SMALL BUSINESS ESTABLISHMENT
- TOWN HALL
- COMMUNITY HALL
- COMBINED DWELLING AND STORE
- DRIVE-IN THEATRE
- RIFLE CLUB
- GOLF COURSE OR COUNTRY CLUB
- SMALL PARK
- WASTED PARK
- BATHING BEACH OR SWIMMING POOL
- PICNIC GROUNDS
- PUBLIC GOLF BALL FIELD, ETC.
- "MINI" QUARRY OR "OPEN" CUT
- QUARRY
- GROUP OF STORAGE TANKS (OIL OR GAS)
- GRAVEL PIT
- GARBAGE OR RUBBISH DUMP
- LOST BRIDGE
- STATE RECREATION AREA
- DRIVE-IN THEATRE
- RIFLE CLUB
- GOLF COURSE OR COUNTRY CLUB
- SMALL PARK
- WASTED PARK
- BATHING BEACH OR SWIMMING POOL
- PICNIC GROUNDS
- PUBLIC GOLF BALL FIELD, ETC.
- "MINI" QUARRY OR "OPEN" CUT
- QUARRY
- GROUP OF STORAGE TANKS (OIL OR GAS)
- GRAVEL PIT
- GARBAGE OR RUBBISH DUMP



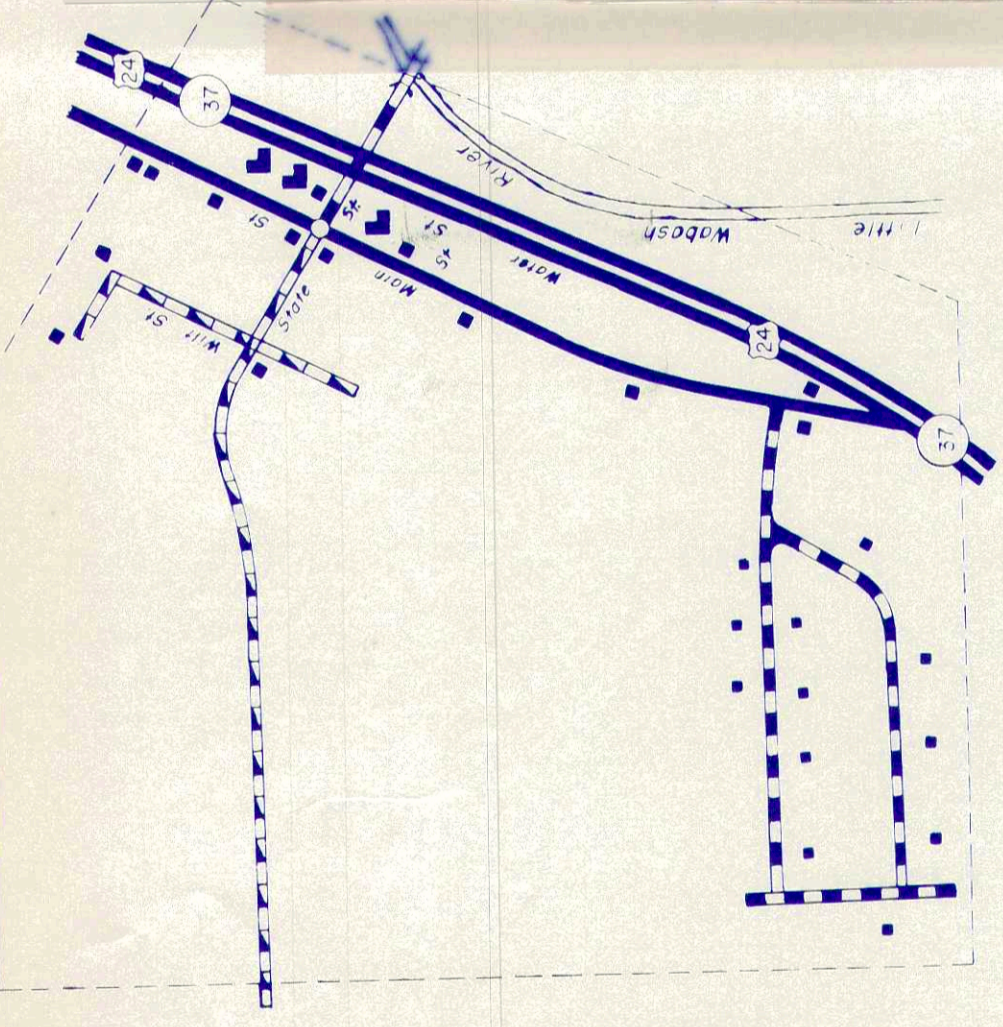
INSET NO. 4
BIPPUS
UNINCORPORATED TOWN
HUNTINGTON COUNTY
INDIANA
LOCATED IN SECS. 21, 22,
28, B. 29, T. 29N, R. 8E



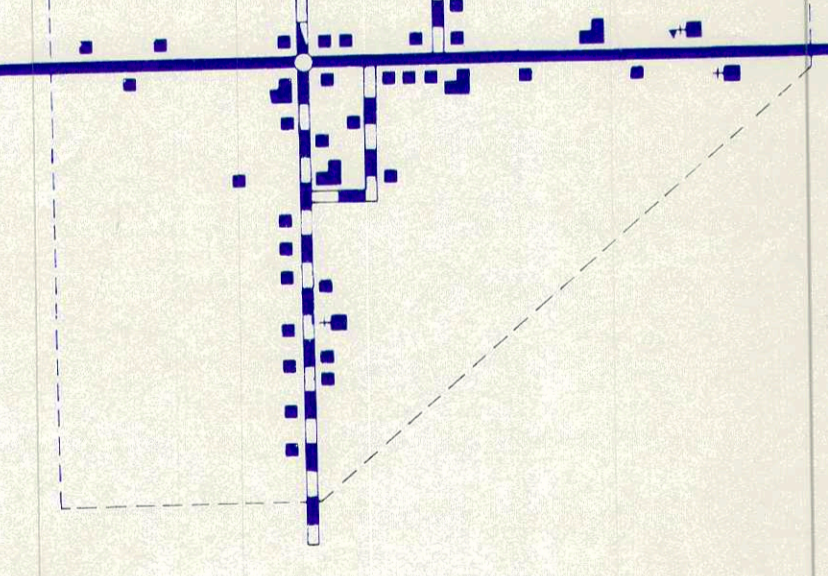
INSET NO. 3
LANCASTER
UNINCORPORATED TOWN
HUNTINGTON COUNTY
INDIANA
LOCATED IN SECS. 6, 34,
T. 27N, R. 8E



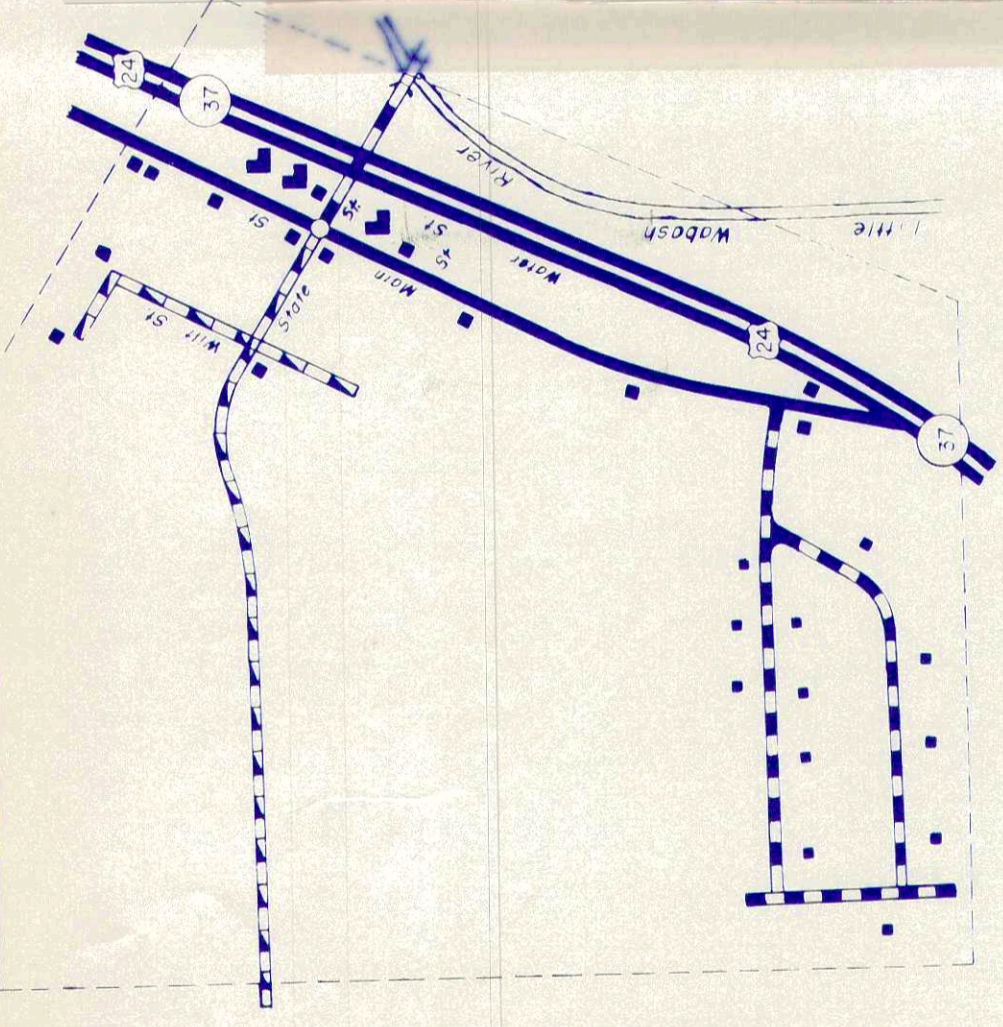
INSET NO. 1
BANQUO
UNINCORPORATED AREA
HUNTINGTON COUNTY
INDIANA
LOCATED IN SECS. 27, 34,
T. 28, R. 8E



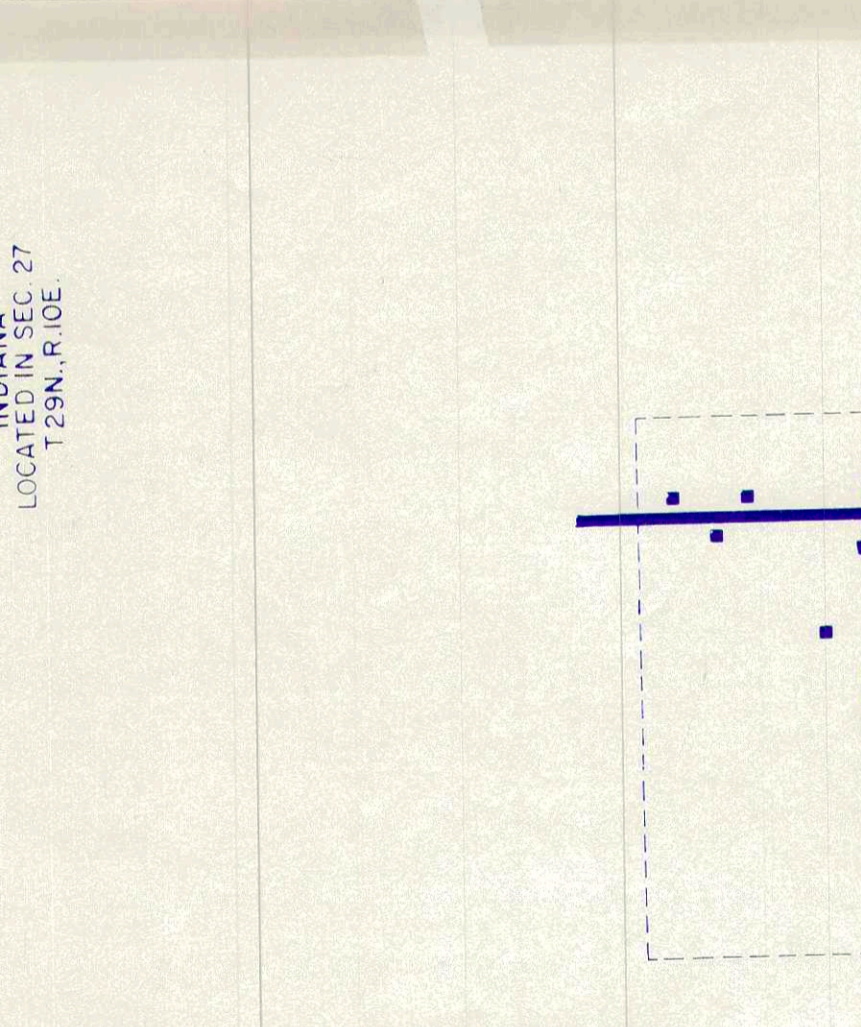
INSET NO. 5
MAHON
UNINCORPORATED TOWN
HUNTINGTON COUNTY
INDIANA
LOCATED IN SEC. 27,
T. 29N, R. 8E



INSET NO. 2
BANQUO
UNINCORPORATED TOWN
HUNTINGTON COUNTY
INDIANA
LOCATED IN SECS. 26, 28, 32,
T. 29N, R. 8E



INSET NO. 6
BOWERSTOWN
UNINCORPORATED TOWN
HUNTINGTON COUNTY
INDIANA
LOCATED IN SEC. 18,
T. 28N, R. 8E



INSET NO. 7
MAJENICA
UNINCORPORATED TOWN
HUNTINGTON COUNTY
INDIANA
LOCATED IN SECS. 24, 25,
T. 27N, R. 8E

NOTE: This map was prepared for information purposes only. It is not intended to be used for legal or other purposes. For more information, contact the Indiana State Highway Commission, 1000 State Office Building, Indianapolis, Ind. 46204.