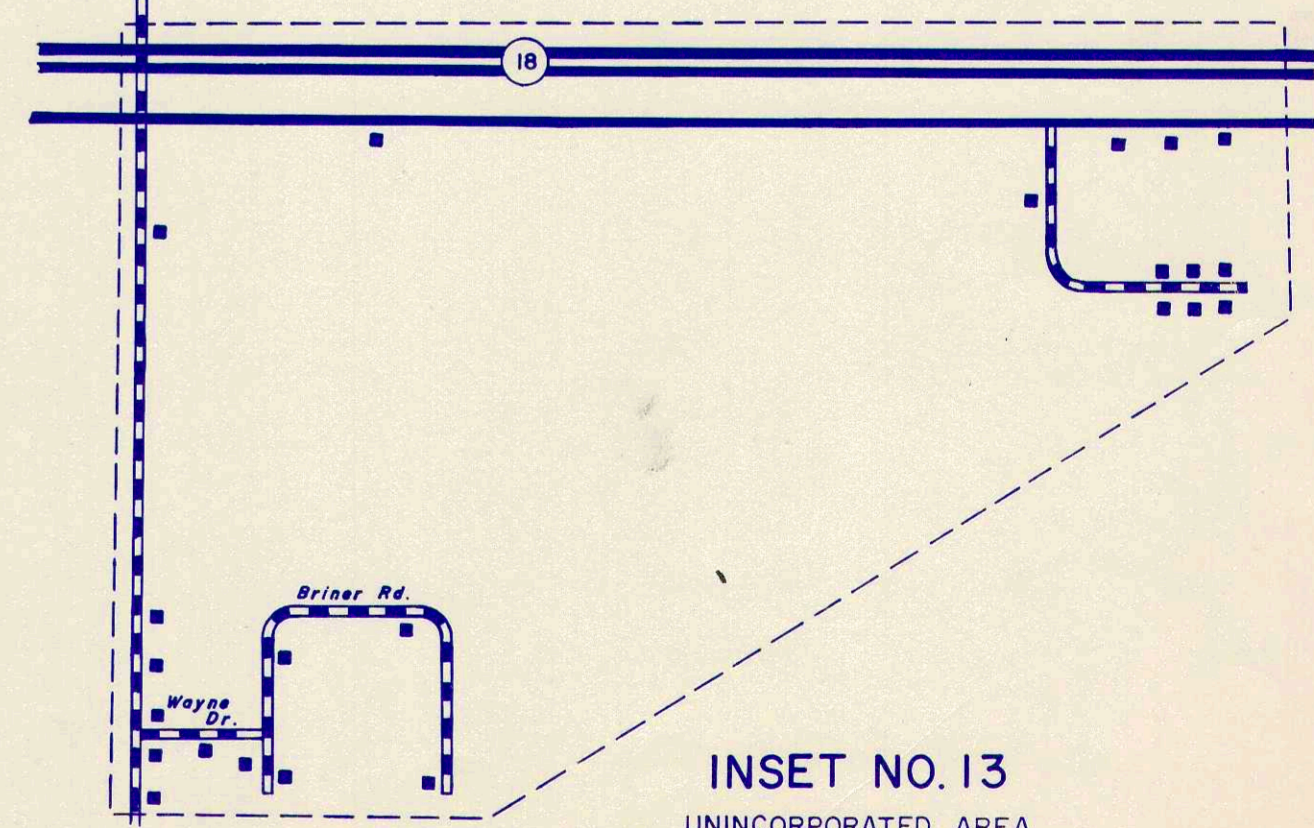
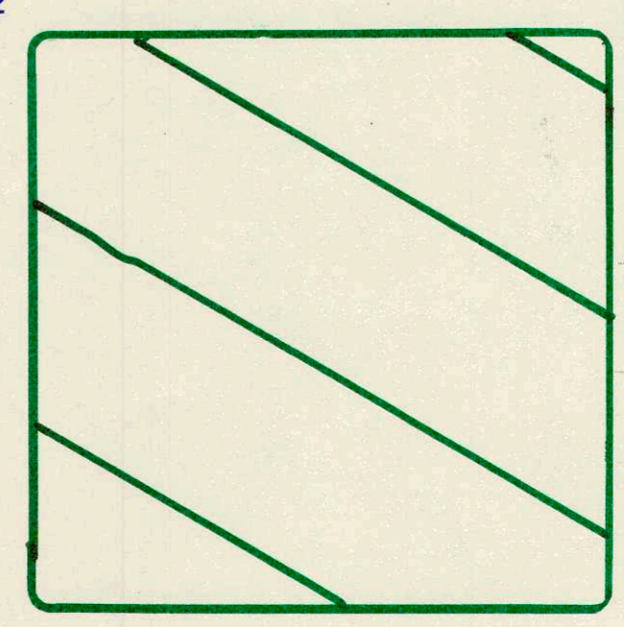
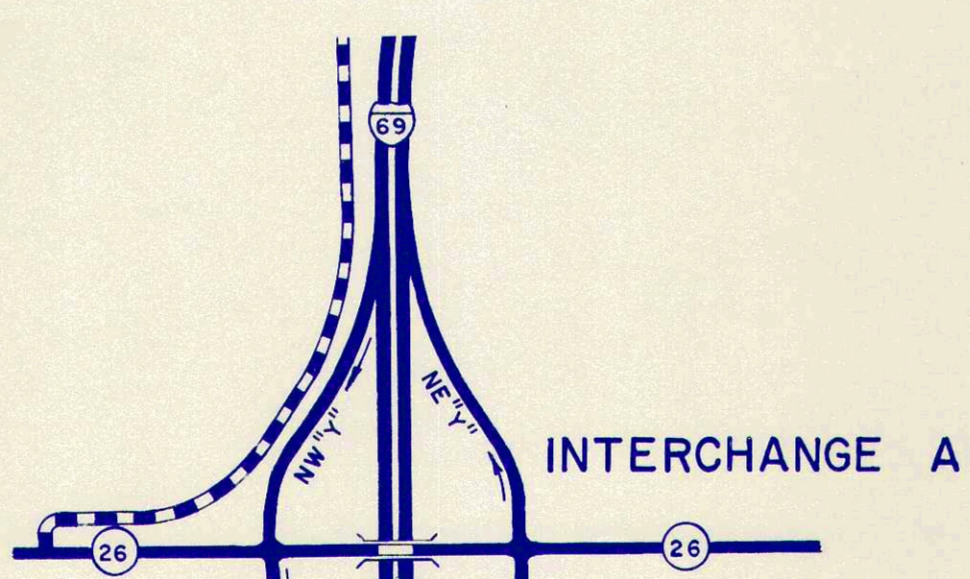


LEGEND

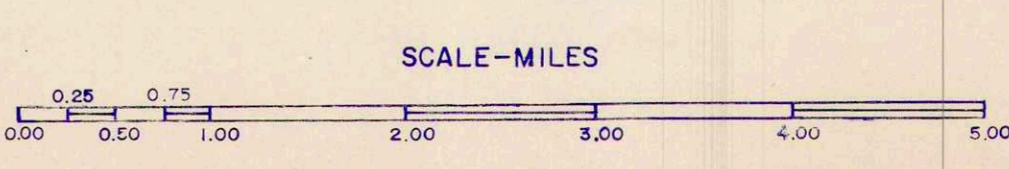
- INTERSTATE HIGHWAY SYSTEM
- UNITED STATES HIGHWAY
- STATE HIGHWAY SYSTEM
- DIVIDED HIGHWAY
- PAVED ROAD
- BITUMINOUS SURFACED ROAD
- METAL SURFACED ROAD
- GRADED AND DRAINED EARTH ROAD
- UNIMPROVED EARTH ROAD
- PRIMITIVE ROAD
- INTERCHANGE (LOCATED IN INCORPORATED CITY)
- INTERCHANGE
- HIGHWAY GRADE SEPARATION
- HIGHWAY BRIDGES (OVER 20' SPAN)
- CONCRETE FORD OR DIP
- FORD - ROAD ESTABLISHED
- FORD - PRIMITIVE ROAD
- RAILROAD (ANY NUMBER OF TRACKS) USED BY SINGLE OPERATING COMPANY
- RAILROAD STATION
- RAILROAD ABOVE
- RAILROAD BELOW
- NARROW STREAM
- WIDE STREAM (ARROWS POINT IN DIRECTION OF FLOW)
- NAVIGABLE STREAM (ARROWS POINT IN DIRECTION OF FLOW)
- DAM WITH ROAD
- DAM WITH LOCK
- DAM WITHOUT ROAD
- LEVEE
- LEVEE WITH ROAD
- TOLL FERRY
- STATE BOUNDARY
- COUNTY LINE
- CIVIL TOWNSHIP LINE
- CORPORATE LINE
- INSET LIMITS
- CONGRESSIONAL TOWNSHIP LINE
- SECTION LINE
- STATE PARK BOUNDARY (NAME SHOWN)
- STATE FOREST OR STATE GAME PRESERVE BOUNDARY
- NATIONAL PARK BOUNDARY (NAME SHOWN)
- NATIONAL PURCHASE UNIT BOUNDARY
- AIRPORT BOUNDARY
- C COMMERCIAL, M MUNICIPAL, OR P PRIVATE AIRPORT
- ARMY OR NATIONAL GUARD
- LANDING FIELD
- STATE CAPITOL
- COUNTY SEAT
- OTHER CITIES AND VILLAGES
- DWELLING OR FARM UNIT
- ROW OR GROUP OF DWELLINGS CLOSELY SPACED
- SEASONAL DWELLING
- ROW OR GROUP OF SEASONAL DWELLINGS
- APARTMENT
- HOTEL
- MOTEL OR TOURIST COURT
- TRAILER COURT
- STORE OR SMALL BUSINESS ESTABLISHMENT
- TOWN HALL, GRANGE OR COMMUNITY HALL
- COMBINED DWELLING AND STORE
- POST OFFICE
- BARRACKS OR DORMITORIES FOR STUDENTS, WORKERS, MIGRANTS, ETC.
- SCHOOLHOUSE, OTHER EDUCATIONAL INSTITUTION
- CHURCH, OTHER RELIGIOUS INSTITUTION
- CEMETERY
- CHURCH WITH CEMETERY ADJACENT
- FRESH AIR FARM OR REST HOME
- HOSPITAL
- POLICE STATION
- FIRE ENGINE HOUSE
- ARMORY
- FAIR GROUND, RACE COURSE OR SPEEDWAY
- WAREHOUSE - GENERAL
- FACTORY OR INDUSTRIAL PLANT
- GAUGING OR PUMPING STATION (GENERAL)
- PUMPING STATION (GAS OR OIL)
- HIGHWAY GARAGE
- POWER PLANT
- BOOSTER STATION
- RADIO STATION (WITH CALL LETTERS)
- RADIO RANGE STATION
- TELEVISION RELAY STATION
- AGRICULTURAL EXPERIMENT STATION
- COUNTRY FARM
- STOCK YARD
- GRAIN ELEVATOR
- NURSERY
- FRUIT OR NUT ORCHARD
- GREENHOUSE
- CORRECTIONAL INSTITUTION
- CAMP OR LODGE
- OBSERVATION OR LOOKOUT TOWER
- SAWMILL (STATIONARY)
- DRIVE-IN THEATRE
- RIFLE CLUB
- GOLF COURSE OR COUNTRY CLUB
- SMALL PARK
- WAYSIDE PARK
- BATHING BEACH OR SWIMMING POOL
- PICNIC GROUND
- PLAYGROUND, BALL FIELD, ETC.
- SCENIC SITE
- MINE, QUARRY OR OPEN CUT
- OIL OR GAS WELLS
- GROUP OF STORAGE TANKS (OIL OR GAS)
- QUARRY
- GRAVEL PIT
- GARBAGE OR RUBBISH DUMP



**GENERAL HIGHWAY AND TRANSPORTATION MAP
GRANT COUNTY
INDIANA**

PREPARED BY THE
DIVISION OF PLANNING
INDIANA STATE HIGHWAY COMMISSION
IN COOPERATION WITH THE
U. S. DEPARTMENT OF TRANSPORTATION
FEDERAL HIGHWAY ADMINISTRATION

ENVIRONMENTAL SYSTEMS
APPLICATION CENTER



1979

POLYCONIC PROJECTION

MAP CHECKED WITH AERIAL PHOTOGRAPHS DATED 1976

APPROVAL DATE _____

DATE	REVISIONS	BY

Note: This map not copyrighted for information regarding availability, write:
Indiana State Highway Commission
Division of Planning
1205 State Office Building
Indianapolis, Ind. 46204

