

GENERAL HIGHWAY AND TRANSPORTATION MAP DEKALB COUNTY INDIANA

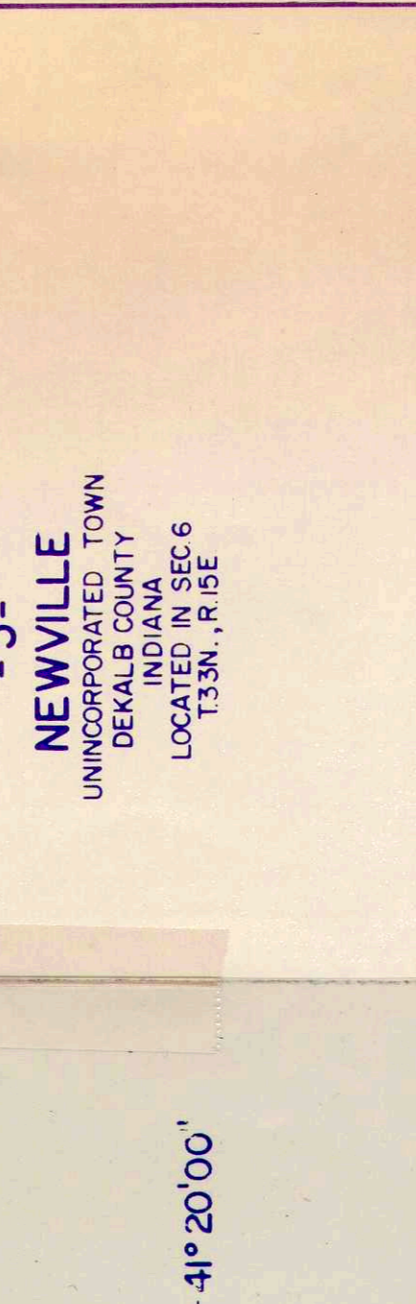
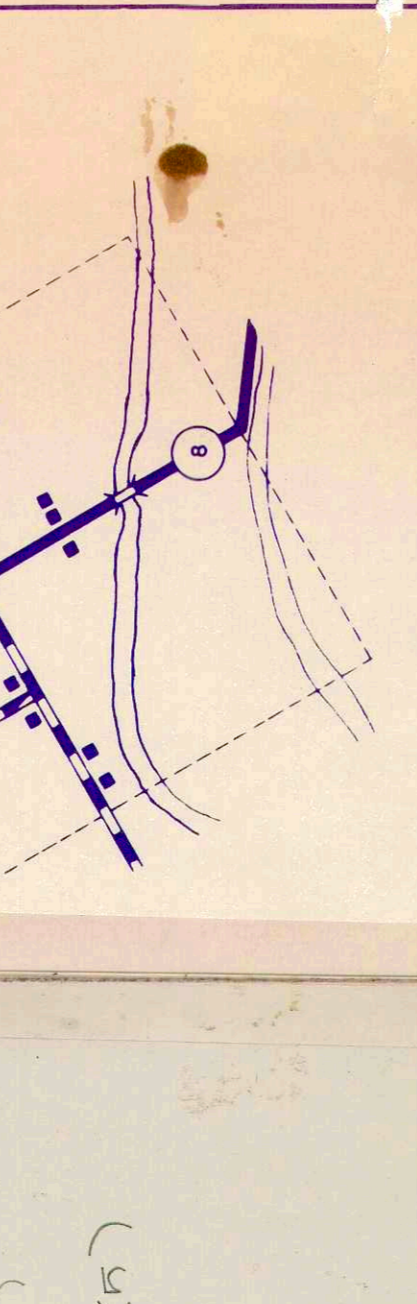
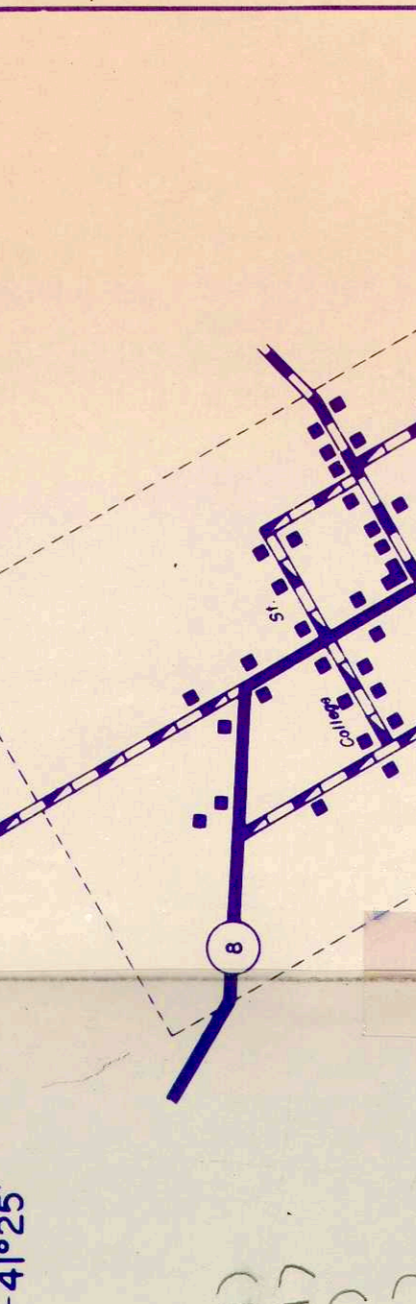
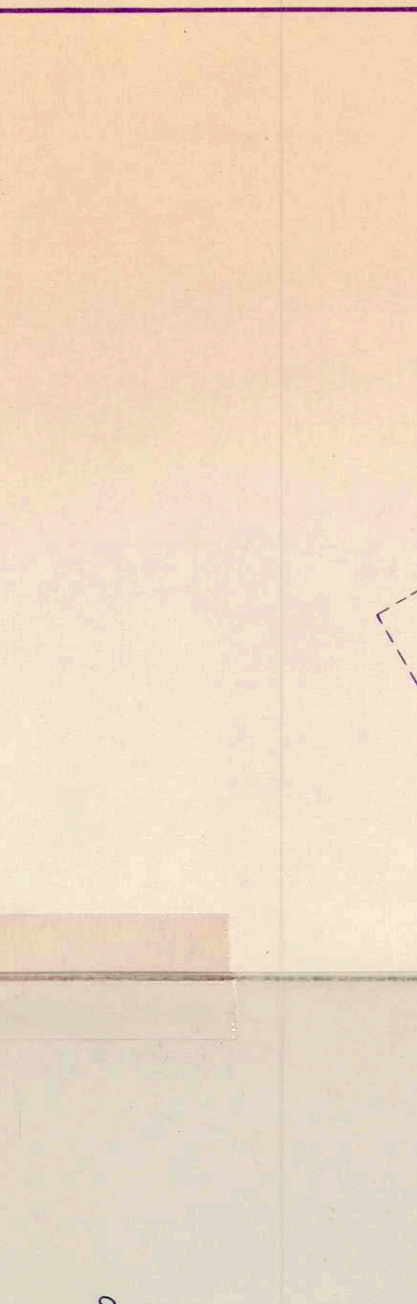
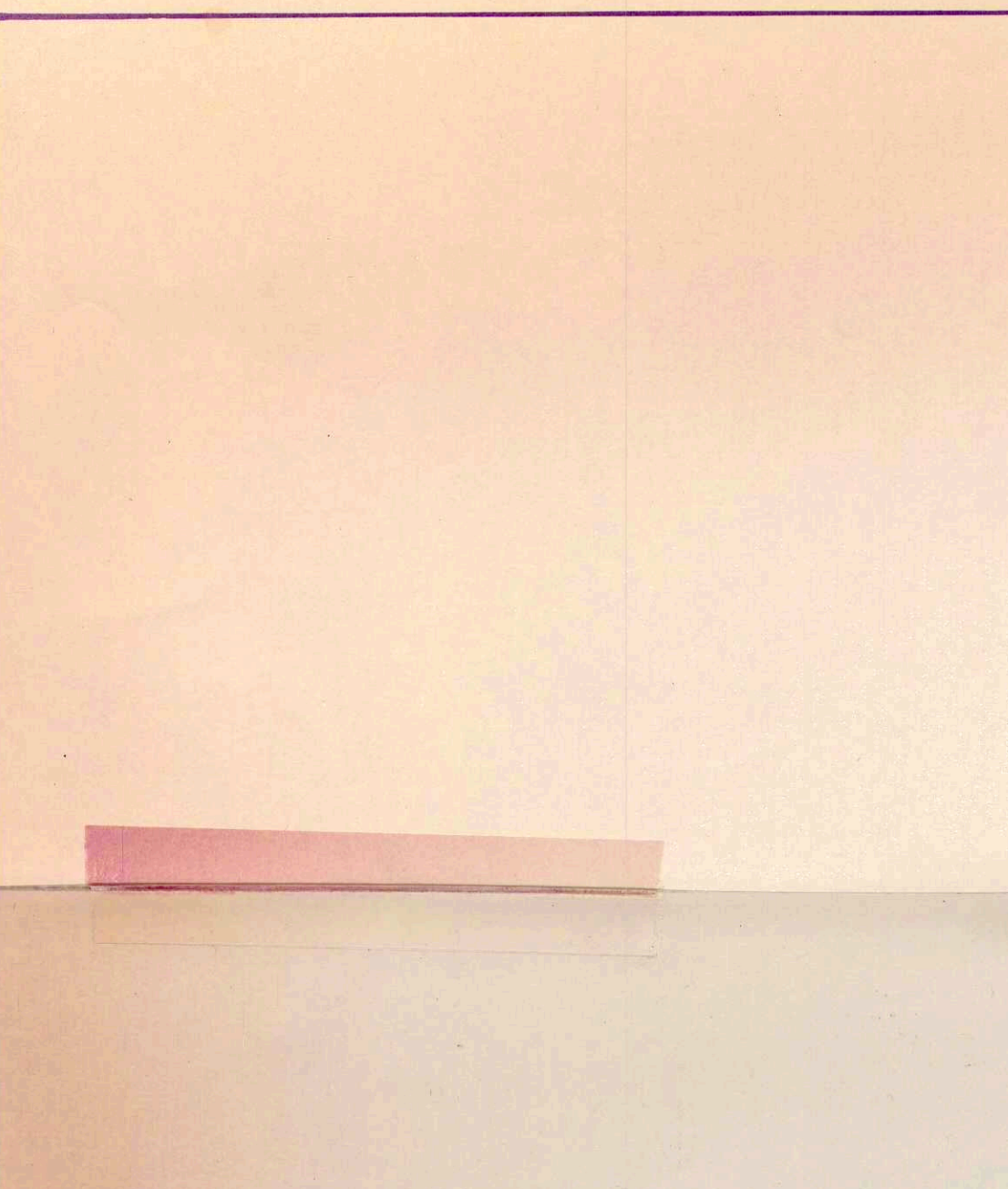
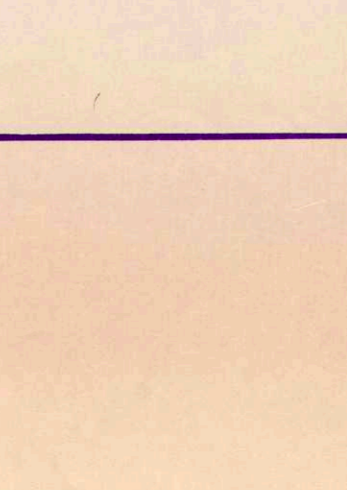
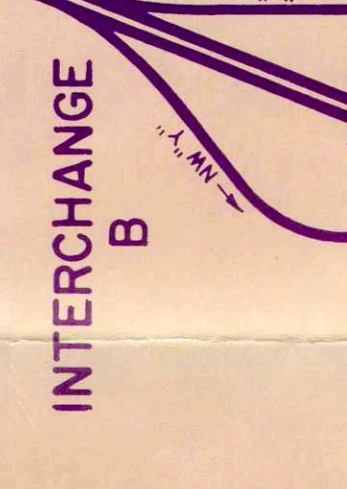
PREPARED BY THE
DIVISION OF PLANNING
INDIANA STATE HIGHWAY COMMISSION
IN COOPERATION WITH THE
U. S. DEPARTMENT OF TRANSPORTATION
FEDERAL HIGHWAY ADMINISTRATION
1978

SCALE-MILES
0 0.5 1 1.5 2 2.5 3 3.5 4 4.5 5

INSET SCALE-FOOT
0 100 200 300 400 500

LEGEND

- INTERSTATE HIGHWAY SYSTEM
- UNITED STATES HIGHWAY SYSTEM
- STATE HIGHWAY SYSTEM
- DIVIDED HIGHWAY
- PAVED ROAD
- BITUMINOUS SURFACED ROAD
- GRAVEL ROAD
- STATE ROAD
- UNIMPROVED EARTH ROAD
- UNIMPROVED ROAD
- INTERCHANGE (LOCATED IN INCORPORATED CITY)
- INTERCHANGE
- HIGHWAY GRADE SEPARATION
- HIGHWAY BRIDGES (OVER 20 SPAN)
- CONCRETE FORD OR DIP
- FORD - ROAD ESTABLISHED
- FORD - PRIMITIVE
- RAILROAD STATION
- RAILROAD ABOVE
- RAILROAD BELOW
- WIDE STREAM (POINT IN DIRECTION OF FLOW)
- NAVIGABLE STREAM
- DAW WITH ROAD
- DAW WITH LOCK
- POST OFFICE
- BANKS OR ADMONITIONS FOR STUDENTS
- SCHOOLHOUSE, OTHER EDUCATIONAL INSTITUTION
- CHURCH, OTHER RELIGIOUS INSTITUTION
- CEMETERY
- CHURCH WITH CEMETERY ADJACENT
- HOSPITAL
- FIRE ENGINE HOUSE
- FARM
- WAREHOUSE - GENERAL PLANT
- GAUGING OR PUMPING STATION (GENERAL)
- PUMPING STATION (GAS OR OIL)
- HIGHWAY GARAGE
- POWER PLANT
- BOOSTER STATION
- RADIO STATION (WITH CALL LETTERS)
- RECREATION AREA
- RECREATION CENTER
- COUNTY FARM
- STOCK YARD
- GRAN ELEVATOR
- NURSERY
- FRUIT OR NUT ORCHARD
- GREENHOUSE
- CORRECTIONAL INSTITUTION
- CAMP OR LODGE
- OBSERVATION OR LOOKOUT TOWER
- SEWAGE TREATMENT PLANT
- DAW WITHOUT ROAD
- LEVEE WITH ROAD
- LEVEE WITHOUT ROAD
- STATE BOUNDARY
- COUNTY LINE
- CIVIL TOWNSHIP LINE
- CORPORATE LINE
- INSET LIMITS
- CONGRESSIONAL TOWNSHIP LINE
- STATE FOREST OR STATE GAME PRESERVE BOUNDARY
- NATIONAL PARK BOUNDARY (NAME SHOWN)
- NATIONAL PARK BOUNDARY (NAME SHOWN)
- NATIONAL PARK BOUNDARY (UNIT BOUNDARY)
- COMMERCIAL, MUNICIPAL, OR COUNTY SEAT
- LANDS OF NATIONAL GUARD
- STATE CAPITAL
- COUNTY SEAT
- OTHER CITIES AND VILLAGES
- INCORPORATED AREA
- UNINCORPORATED AREA
- SEASONAL DWELLING
- SEASONAL DWELLING CLOSELY SPACED
- ROW OR GROUP OF SEASONAL DWELLINGS
- APARTMENT
- HOTEL
- MOTEL OR TOURIST COURT
- TRAILER COURT
- STORE OR SMALL BUSINESS ESTABLISHMENT
- TOWN HALL, GRANGE OR COMMUNITY HALL
- COMBINED DWELLING AND STORE



INSET NO. 4
UNINCORPORATED AREA
DEKALB COUNTY
LOCATED IN SEC. 20 & 29
T. 35N., R. 12E.

INSET NO. 3
CEDAR CENTER
UNINCORPORATED TOWNSHIP
DEKALB COUNTY
LOCATED IN SEC. 18 & 17
T. 35N., R. 12E.

INSET NO. 2
BUTLER CENTER
UNINCORPORATED TOWNSHIP
DEKALB COUNTY
LOCATED IN SEC. 16 & 17
T. 35N., R. 12E.

INSET NO. 1
UNINCORPORATED AREA
DEKALB COUNTY
LOCATED IN SEC. 27 & 28, 33 & 34
T. 35N., R. 12E.

INSET NO. 5
NEWVILLE
UNINCORPORATED TOWNSHIP
DEKALB COUNTY
LOCATED IN SEC. 20, 21 & 22
T. 35N., R. 12E.

INSET NO. 6
SPENCERVILLE
UNINCORPORATED TOWNSHIP
DEKALB COUNTY
LOCATED IN SEC. 20, 21 & 22
T. 35N., R. 12E.