

- INTERSTATE HIGHWAY SYSTEM
- STATE HIGHWAY SYSTEM
- DIVIDED HIGHWAY
- PAVED ROAD
- BRIDGED SURFACED ROAD
- GRAVEL AND DRAINED EARTH ROAD
- UNIMPROVED EARTH ROAD
- INTERCHANGE
- INTERCHANGE LOCATED IN INCORPORATED CITY
- HIGHWAY BRIDGE OVER SPAN
- CONCRETE ROAD ON DIRT
- FORD - ROAD ESTABLISHED
- RAILROAD (ANY NUMBER OF TRACKS) USED BY SINGLE OPERATING COMPANY
- RAILROAD STATION
- RAILROAD ABOVE
- RAILROAD BELOW
- NARROW STEAM
- WORKING POINT IN DIRECTION OF FLOW
- NAVIGABLE STREAM (ARROWS POINT IN DIRECTION OF FLOW)
- DAM WITH ROAD
- DAM WITH LOOK
- DAM WITHOUT ROAD
- LEVEL
- LEVEL WITH ROAD
- STATE BOUNDARY
- COUNTY BOUNDARY
- CIVIL TOWNSHIP LINE
- CORPORATE LINE
- INSERT LIMITS
- CONGRESSIONAL TOWNSHIP LINE
- STATE PARK BOUNDARY (NAME SHOWN)
- STATE FOREST OR STATE GAME PRESERVE BOUNDARY
- NATIONAL PARK BOUNDARY (NAME SHOWN)
- NATIONAL PURCHASE UNIT BOUNDARY
- AIRPORT BOUNDARY

LEGEND

- C COMMERCIAL, M MUNICIPAL, OR A ARMY OR NATIONAL GUARD
- STATE FIELD
- COUNTY SEAT
- OTHER CITIES AND VILLAGES
- DEVELOPING OR FARM UNIT
- DWELLING OR GROUP OF DWELLINGS
- SEASONAL DWELLING
- ROW OR GROUP OF SEASONAL DWELLINGS
- APARTMENT
- MOTEL OR TOURIST COURT
- TALKING COURT
- STORE OR SMALL BUSINESS ESTABLISHMENT
- STONE WALL, GRASS OR COMMUNITY HALL
- CENTRE
- CHURCH WITH CEMETERY ADJACENT
- HOSPITAL
- FRESH AIR FARM OR REST HOME
- PUBLIC STATION
- RAILROAD STATION
- AMMUNITION
- FAIR GROUND, RACE COURSE OR SPEEDWAY
- DRIVE-IN THEATRE
- RIFFLE CLUB
- GOLF COURSE OR COUNTRY CLUB
- SMALL PARK
- WATERHOUSE - GENERAL
- FACTORY OR INDUSTRIAL PLANT (GENERAL)
- GASING OR PUMPING STATION (GENERAL)
- PUMPING STATION (OIL OR OIL)
- POWER PLANT
- BOOSTER STATION
- RAILROAD STATION WITH CALL LETTERS
- RAILROAD STATION
- TELEVISION RELAY STATION
- APPROPRIATE EXPERIMENT STATION
- COUNTY FARM
- STOCK YARD
- GRAIN ELEVATOR
- NUMBERS
- NUMBERS
- FURNITURE OR WIT ONCHARD
- STATE PARK BOUNDARY (NAME SHOWN)
- CONGRESSIONAL TOWNSHIP LINE
- SECTION LINE
- STATE FOREST OR STATE GAME PRESERVE BOUNDARY
- NATIONAL PARK BOUNDARY (NAME SHOWN)
- NATIONAL PURCHASE UNIT BOUNDARY
- AIRPORT BOUNDARY
- CAMP OR LODGE
- OBSERVATION OR LOOKOUT TOWER

CLAY COUNTY INDIANA

GENERAL HIGHWAY AND TRANSPORTATION MAP

DIVISION OF PLANNING
INDIANA STATE HIGHWAY COMMISSION
U.S. DEPARTMENT OF TRANSPORTATION
IN COOPERATION WITH THE
FEDERAL HIGHWAY ADMINISTRATION

1978

POLYCONIC PROJECTION
MAP CHECKED WITH AERIAL PHOTOGRAPHS DATED 1977

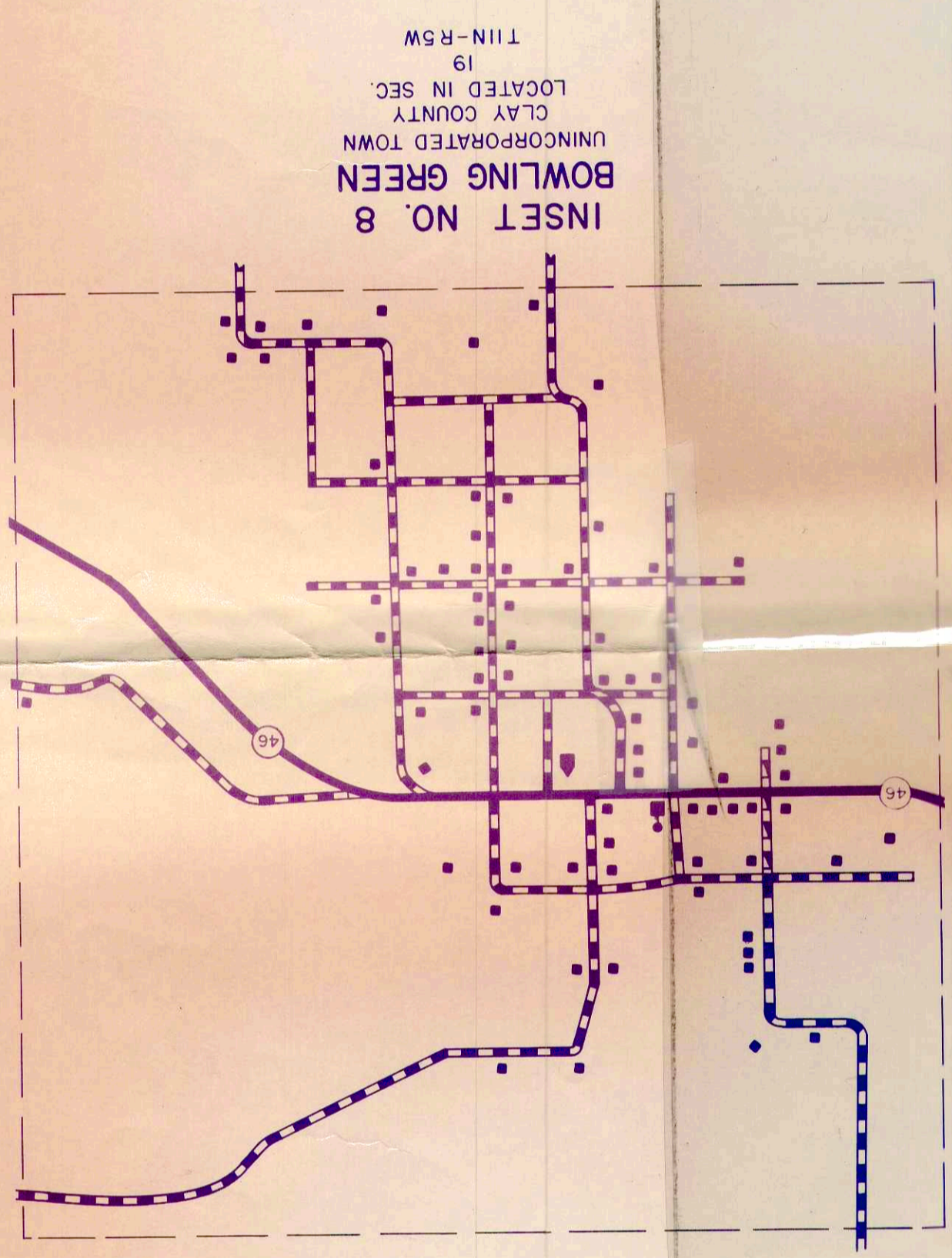
DATE	REVISIONS	BY

APPROVAL DATE

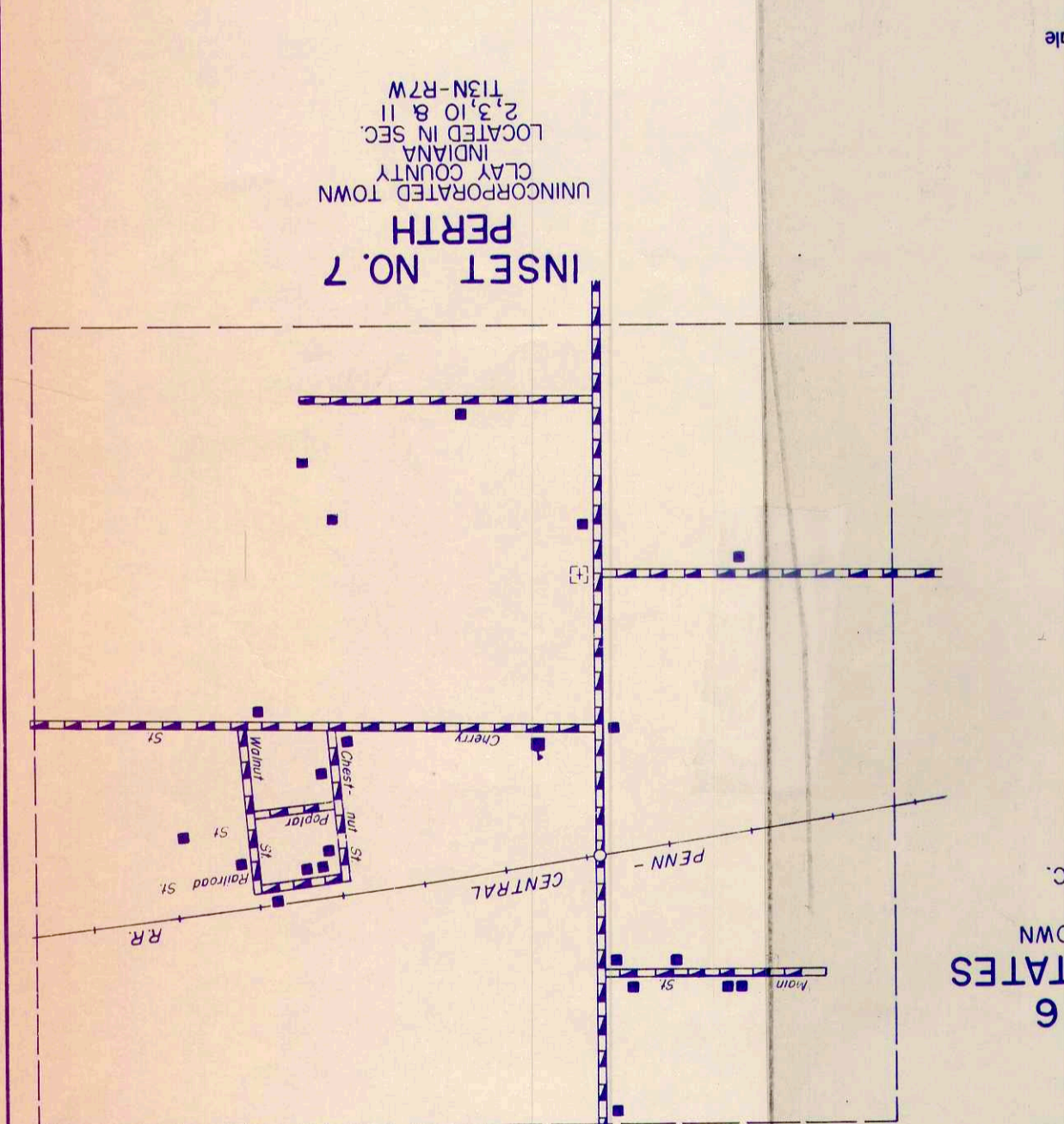
NOTE: THIS MAP WAS REPRODUCED FROM INFORMATION
OBTAINED FROM THE INDIANA STATE HIGHWAY COMMISSION
DIVISION OF PLANNING BUILDING
INDIANAPOLIS, IND. 46204



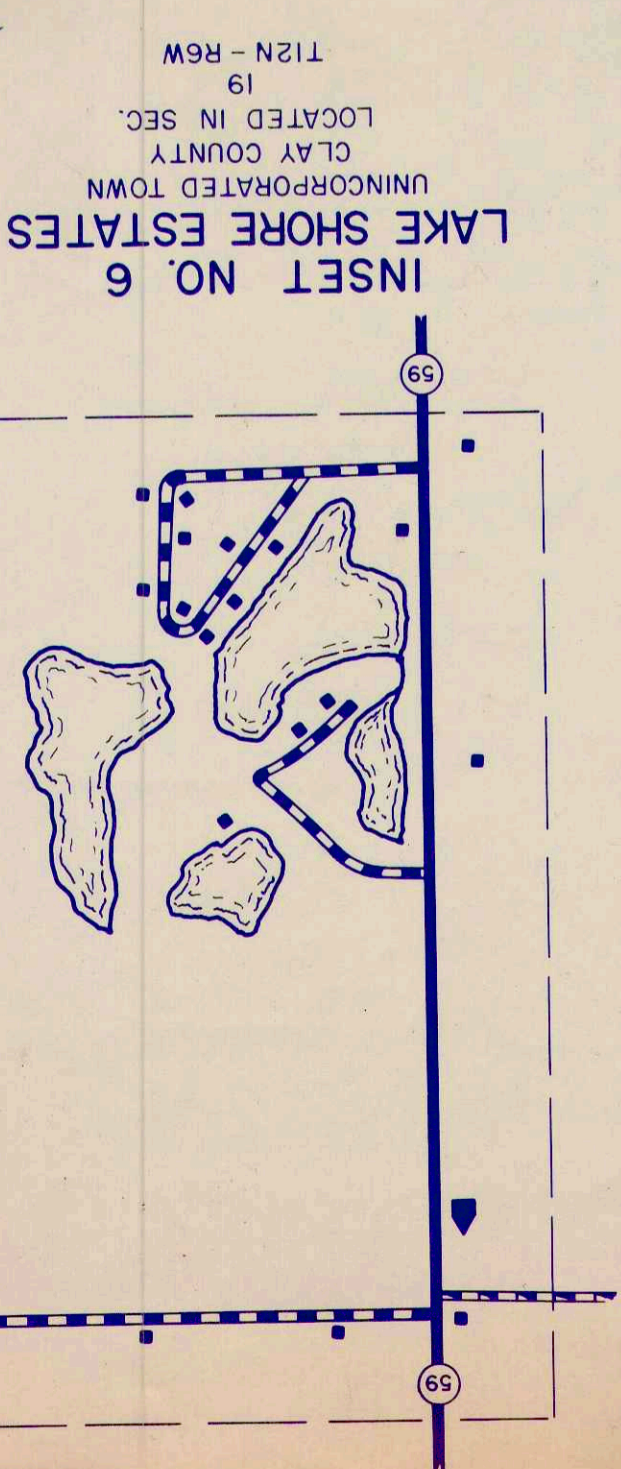
CLAY CO 11



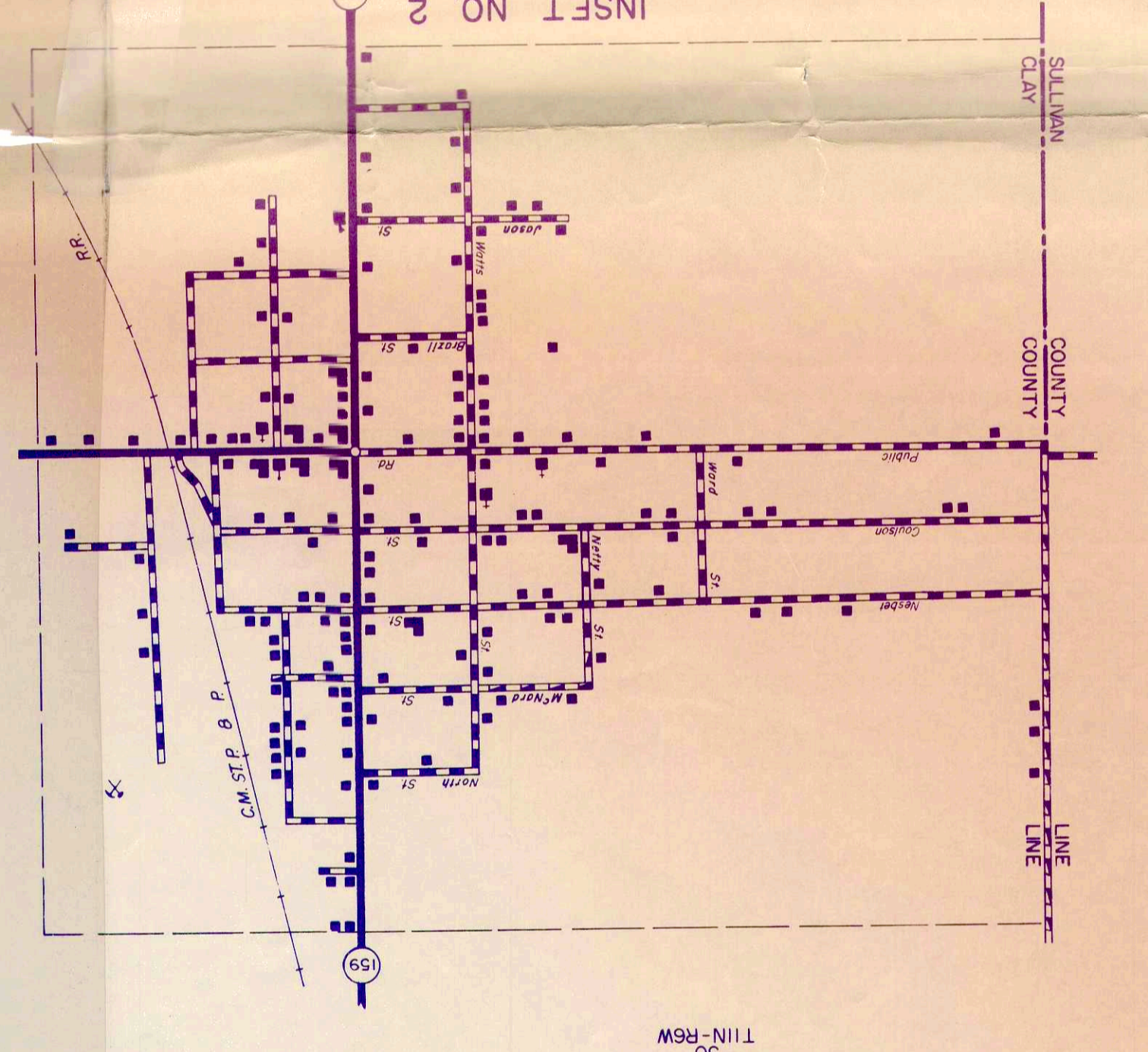
INSET NO. 8
BOWLING GREEN
UNINCORPORATED TOWN
CLAY COUNTY
LOCATED IN SEC. 19
T11N-R1W



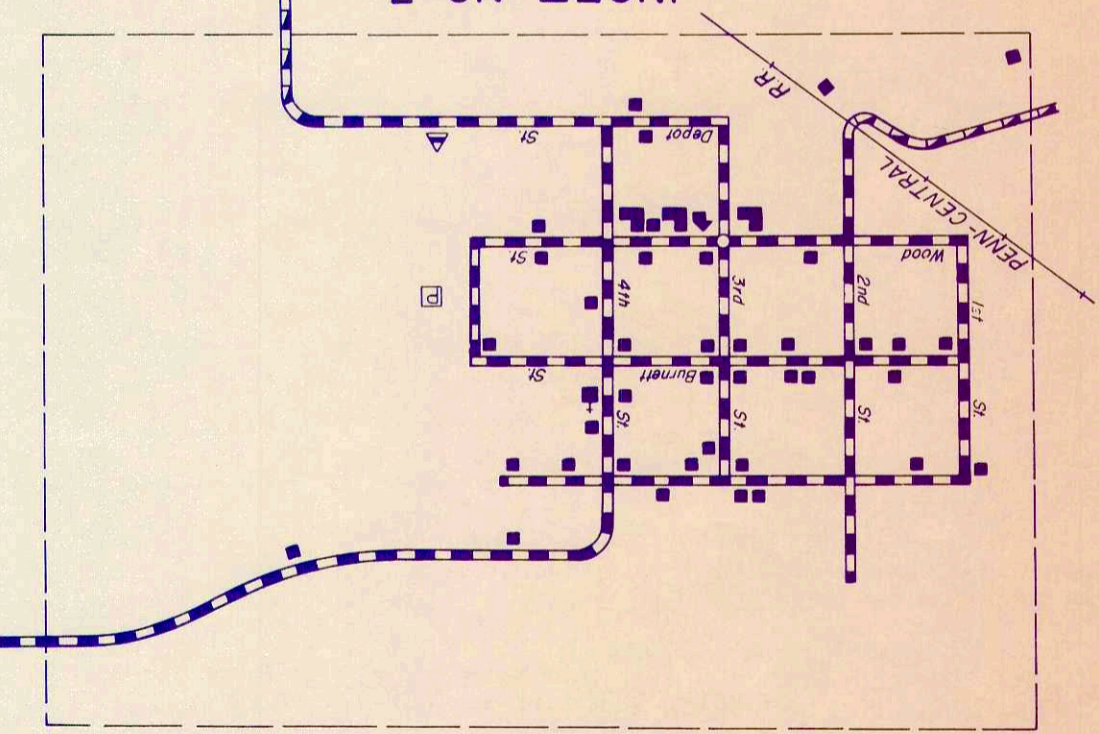
INSET NO. 7
PERTH
UNINCORPORATED TOWN
CLAY COUNTY
LOCATED IN SEC. 11
T11N-R1W



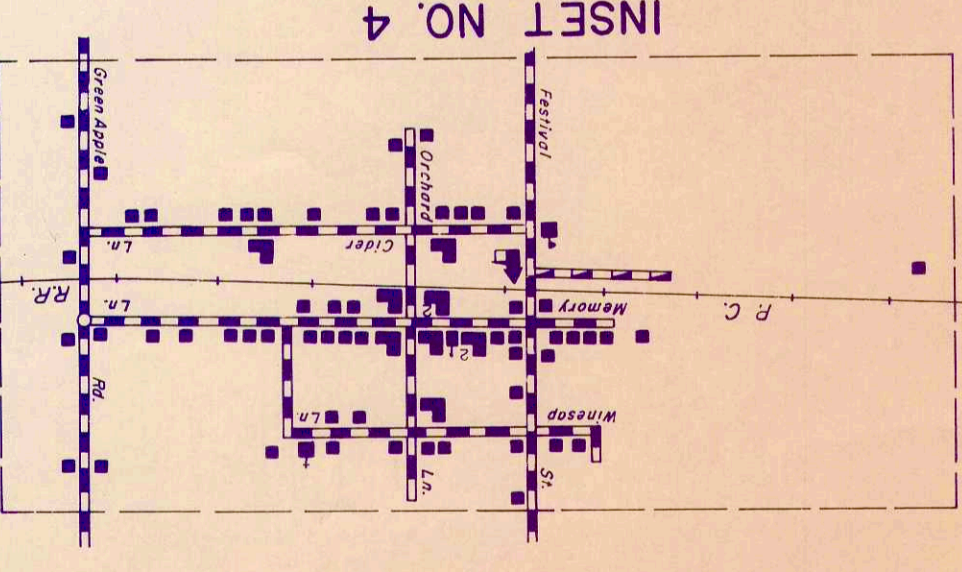
INSET NO. 6
LAKE SHORE ESTATES
UNINCORPORATED TOWN
CLAY COUNTY
LOCATED IN SEC. 19
T12N-R6W



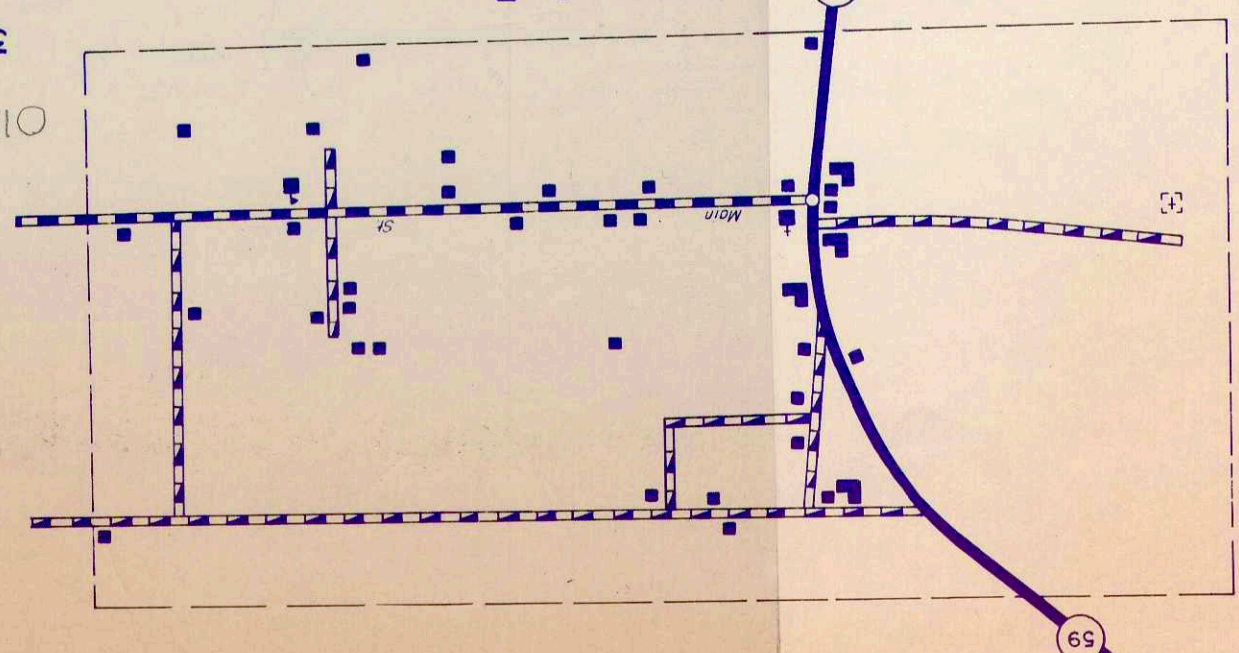
INSET NO. 2
COALMONT
UNINCORPORATED TOWN
CLAY COUNTY
LOCATED IN SEC. 30
T9N-R1W



INSET NO. 3
SALINE CITY
UNINCORPORATED TOWN
CLAY COUNTY
LOCATED IN SEC. 19
T11N-R7W



INSET NO. 4
CORY
UNINCORPORATED TOWN
CLAY COUNTY
LOCATED IN SEC. 20
T11N-R1W



INSET NO. 5
ASHBORO
UNINCORPORATED TOWN
CLAY COUNTY
LOCATED IN SEC. 18
T11N-R6W

