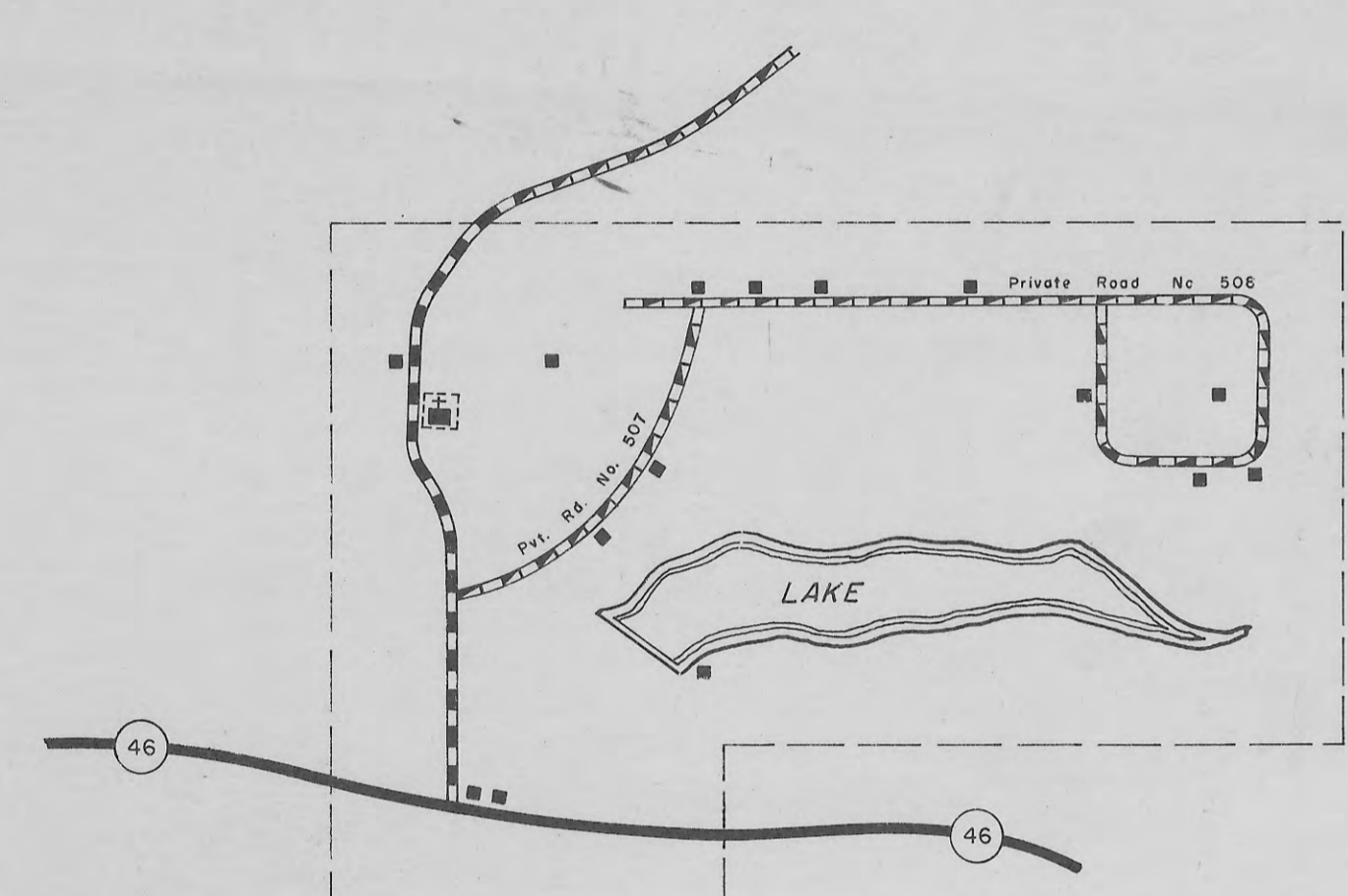
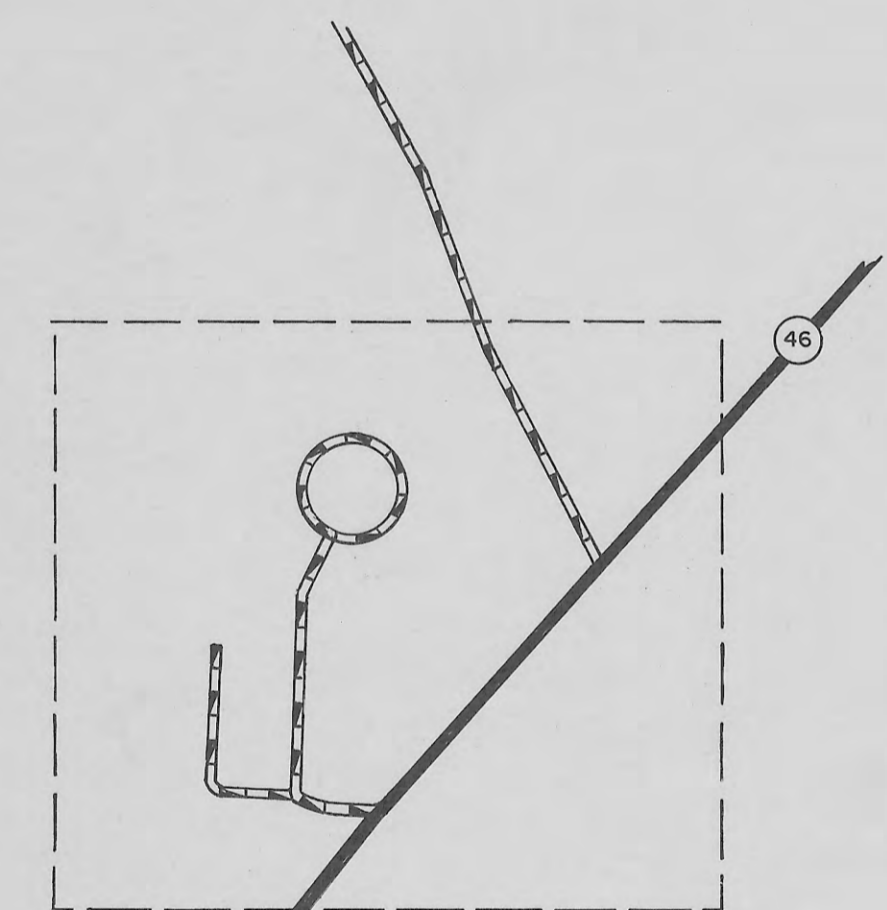


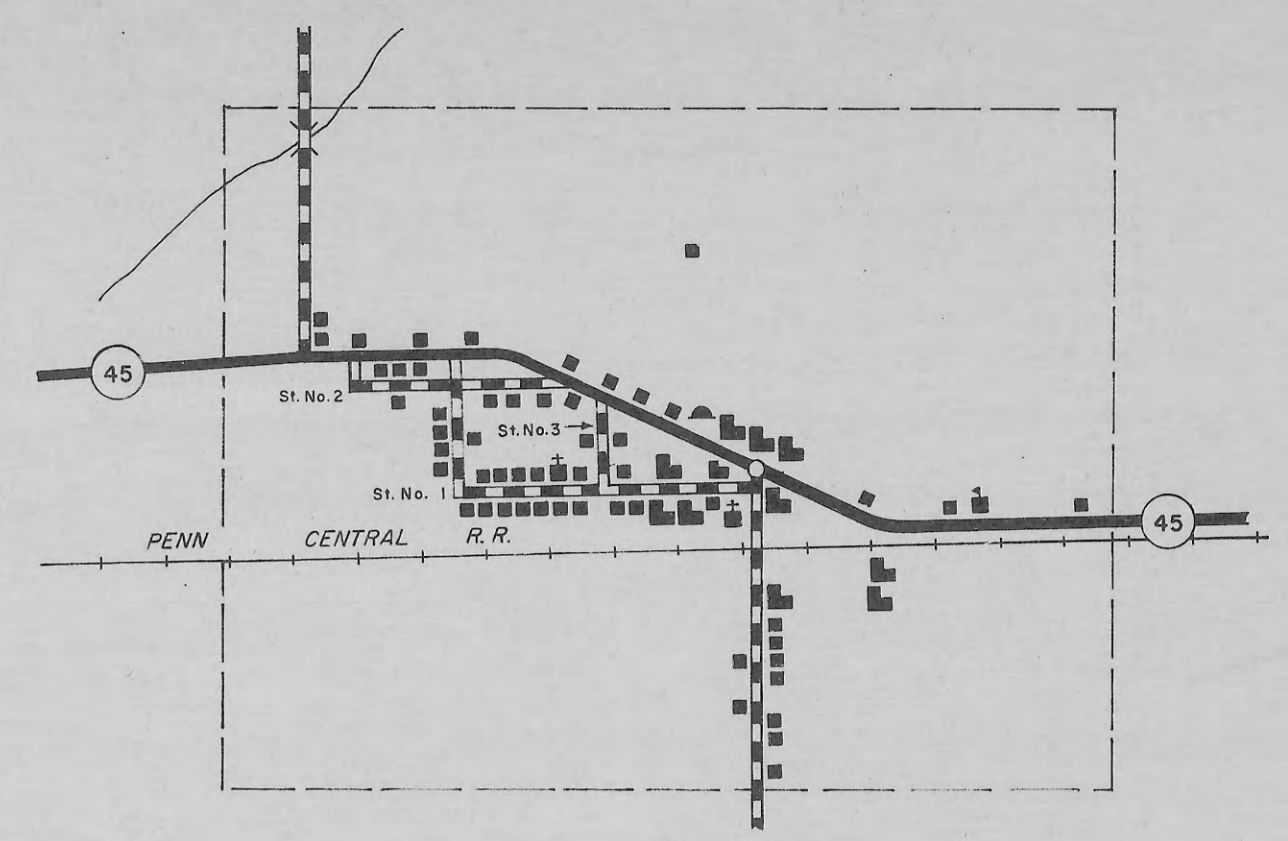
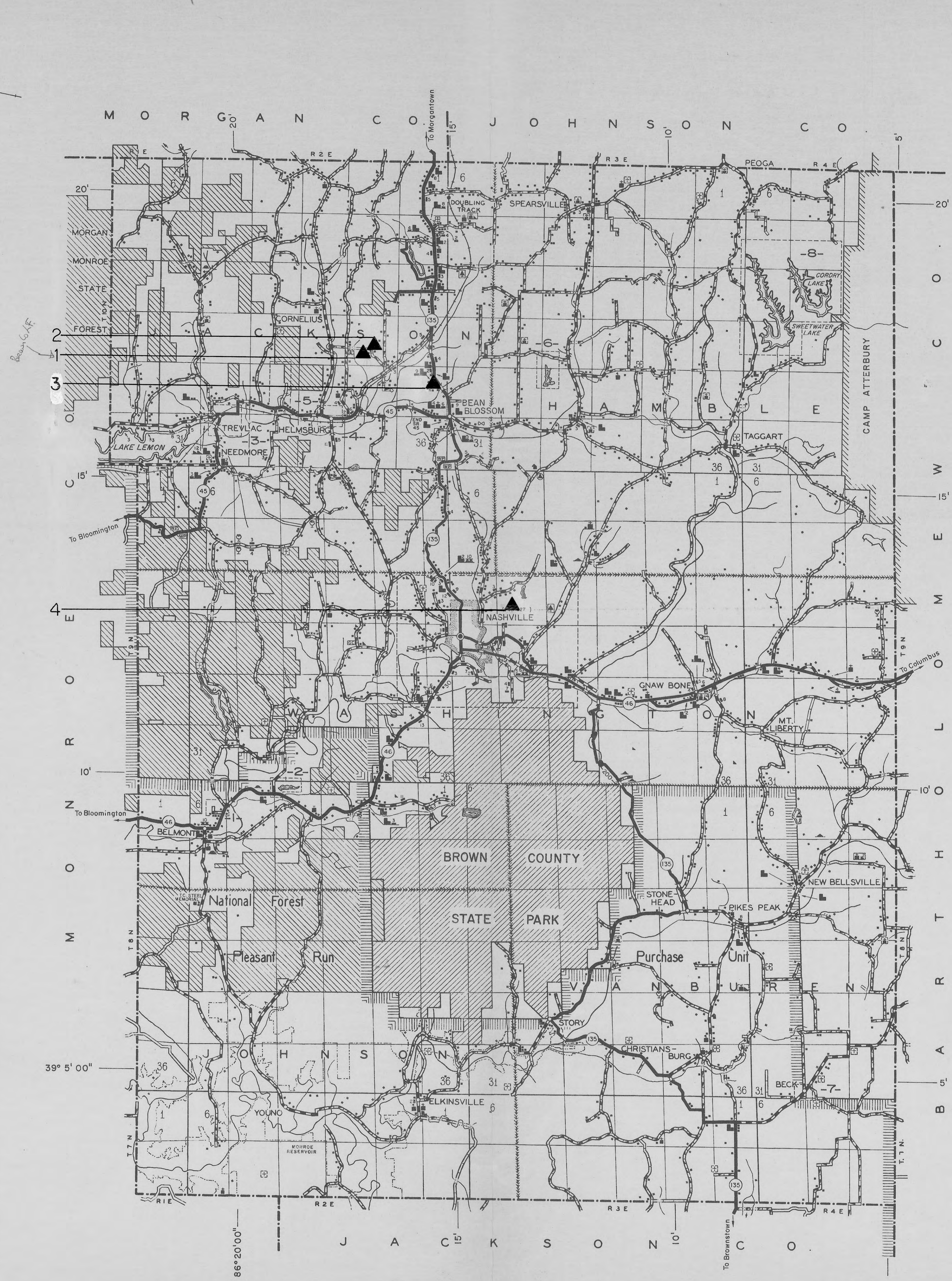
**-3- TREVLAC**  
UNINCORPORATED TOWN  
BROWN COUNTY  
INDIANA  
LOCATED IN SECS. 29 & 32  
T10N,R1E



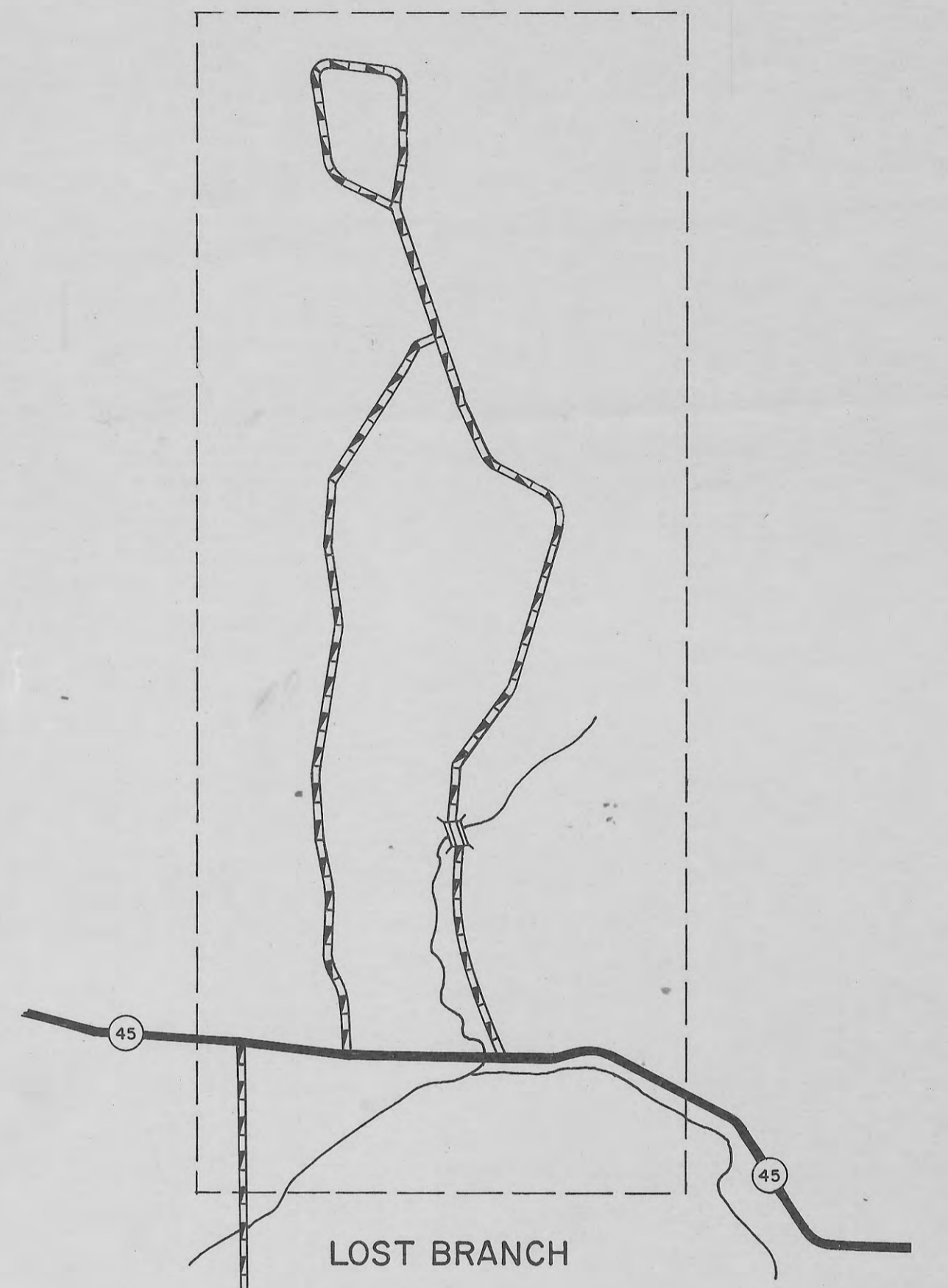
**-2- PRIVATE ADDITION**  
UNINCORPORATED AREA  
BROWN COUNTY  
INDIANA  
LOCATED IN SECS. 32,33,4 & 5  
T8N,R2E



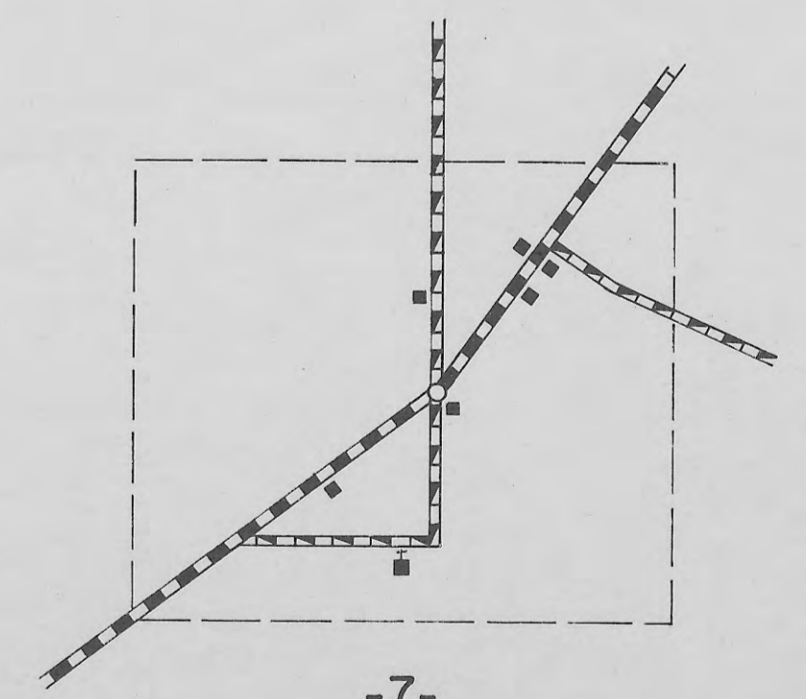
**-1- SHERWOOD FOREST EST.**  
INSET NO. 1  
UNINCORPORATED AREA  
BROWN COUNTY  
INDIANA  
LOCATED IN SECS. 5 & 6  
T9N,R2E



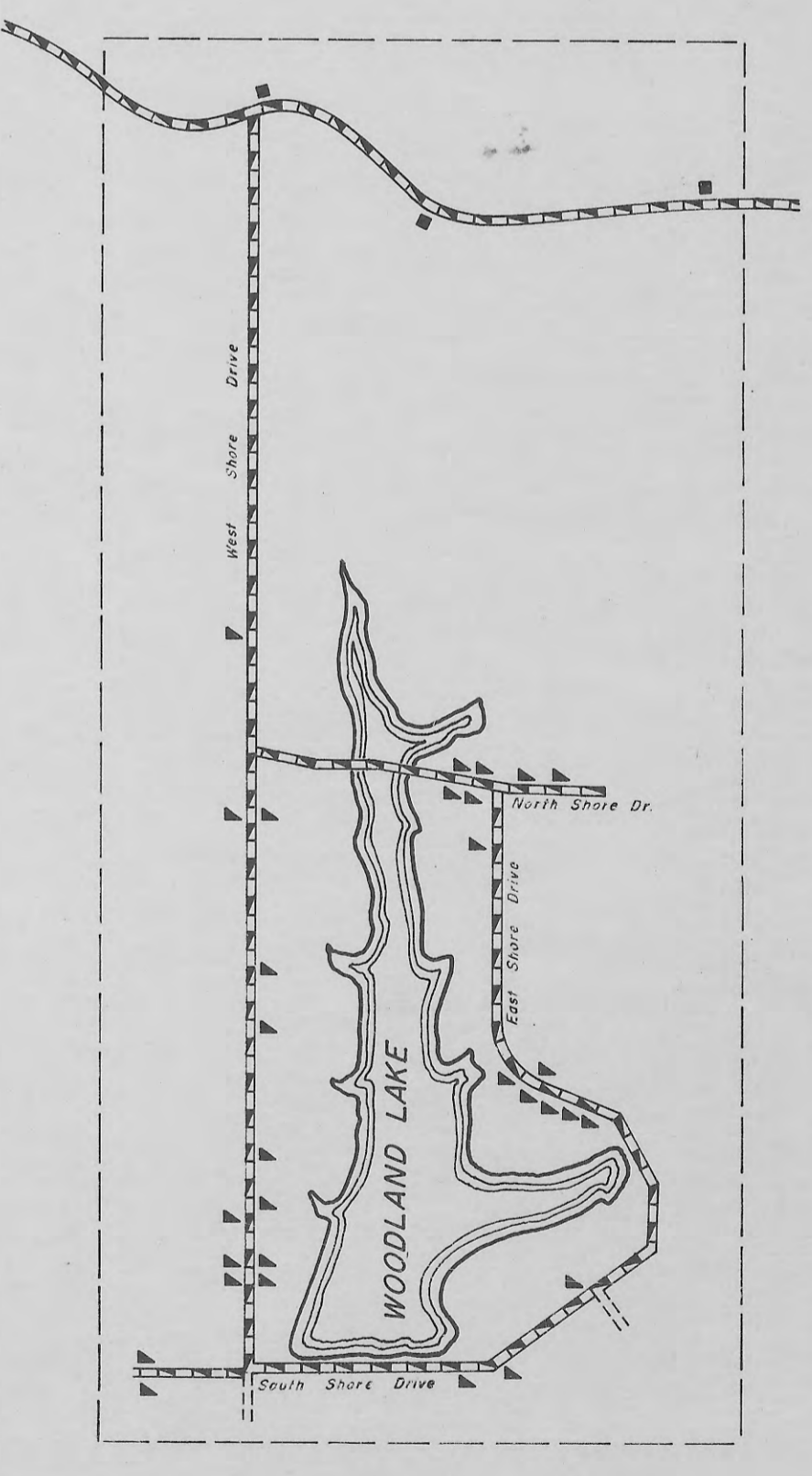
**-4- HELMSBURG**  
UNINCORPORATED TOWN  
BROWN COUNTY  
INDIANA  
LOCATED IN SECS. 27 & 34  
T10N,R2E



**-5- LOST BRANCH**  
INSET NO. 5  
UNINCORPORATED AREA  
BROWN COUNTY  
INDIANA  
LOCATED IN SECS. 21 & 28  
T10N,R2E



**-7- BECK**  
UNINCORPORATED TOWN  
BROWN COUNTY  
INDIANA  
LOCATED IN SECS. 31,32,5 & 6  
T7N,R4E



**-6- WOODLAND LAKE**  
INSET NO. 6  
UNINCORPORATED AREA  
BROWN COUNTY  
INDIANA  
LOCATED IN SECS. 20,21,28 & 29  
T10N,R3E

**LEGEND**

- INTERSTATE HIGHWAY SYSTEM
- UNITED STATES HIGHWAY
- STATE HIGHWAY SYSTEM
- DIVIDED HIGHWAY
- PAVED ROAD
- BITUMINOUS SURFACED ROAD
- METAL SURFACED ROAD
- GRADED AND DRAINED EARTH ROAD
- UNIMPROVED EARTH ROAD
- PRIMITIVE ROAD
- INTERCHANGE (LOCATED IN INCORPORATED CITY)
- INTERCHANGE
- HIGHWAY GRADE SEPARATION
- HIGHWAY BRIDGES (OVER 20' SPAN)
- CONCRETE FORD OR DIP
- FORD - ROAD ESTABLISHED
- FORD - PRIMITIVE ROAD
- RAILROAD (ANY NUMBER OF TRACKS) USED BY SINGLE OPERATING COMPANY
- RAILROAD STATION
- RAILROAD ABOVE
- RAILROAD BELOW
- NARROW STREAM
- WIDE STREAM (ARROWS POINT IN DIRECTION OF FLOW)
- NAVIGABLE STREAM (ARROWS POINT IN DIRECTION OF FLOW)
- DAM WITH ROAD
- DAM WITH LOCK
- DAM WITHOUT ROAD
- LEVEE
- LEVEE WITH ROAD
- TOLL FERRY
- STATE BOUNDARY
- COUNTY LINE
- CIVIL TOWNSHIP LINE
- CORPORATE LINE
- INSET LIMITS
- CONGRESSIONAL TOWNSHIP LINE
- SECTION LINE
- STATE PARK BOUNDARY (NAME SHOWN)
- STATE FOREST OR STATE GAME PRESERVE BOUNDARY
- NATIONAL PARK BOUNDARY (NAME SHOWN)
- NATIONAL PURCHASE UNIT BOUNDARY
- AIRPORT BOUNDARY
- C COMMERCIAL, M MUNICIPAL, OR P PRIVATE AIRPORT
- A ARMY OR U.S. NATIONAL GUARD LANDING FIELD
- STATE CAPITOL
- COUNTY SEAT
- OTHER CITIES AND VILLAGES
- DWELLING OR FARM UNIT
- ROW OR GROUP OF DWELLINGS CLOSELY SPACED
- SEASONAL DWELLINGS
- ROW OR GROUP OF SEASONAL DWELLINGS
- APARTMENT
- HOTEL
- MOTEL OR TOURIST COURT
- TRAILER COURT
- STORE OR SMALL BUSINESS ESTABLISHMENT
- TOWN HALL GRANGE OR COMMUNITY HALL
- COMBINED DWELLING AND STORE
- POST OFFICE
- BARRACKS OR DORMITORIES FOR STUDENTS, WORKERS, MIGRANTS, ETC.
- SCHOOLHOUSE, OTHER EDUCATIONAL INSTITUTION
- CHURCH, OTHER RELIGIOUS INSTITUTION
- CEMETERY
- CHURCH WITH CEMETERY ADJACENT
- FRESH AIR FARM OR REST HOME
- HOSPITAL
- POLICE STATION
- FIRE ENGINE HOUSE
- ARMORY
- FAIR GROUND, RACE COURSE OR SPEEDWAY
- WAREHOUSE - GENERAL
- FACTORY OR INDUSTRIAL PLANT
- GASOLINE OR PUMPING STATION (GENERAL)
- PUMPING STATION (GAS OR OIL)
- HIGHWAY GARAGE
- POWER PLANT
- BOOSTER STATION
- RADIO STATION (WITH CALL LETTERS)
- RADIO RANGE STATION
- TELEVISION RELAY STATION
- AGRICULTURAL EXPERIMENT STATION
- COUNTY FARM
- STOCK YARD
- GRAIN ELEVATOR
- NURSERY
- FRUIT OR NUT ORCHARD
- GREENHOUSE
- CORRECTIONAL INSTITUTION
- CAMP OR LODGE
- OBSERVATION OR LOOKOUT TOWER
- SAWMILL (STATIONARY)
- DRIVE-IN THEATRE
- RIFLE CLUB
- GOLF COURSE OR COUNTRY CLUB
- SMALL PARK
- WAYSIDE PARK
- BATHING BEACH OR SWIMMING POOL
- PICNIC GROUND
- PLAYGROUND, BALL FIELD, ETC.
- SCENIC SITE
- MINE, QUARRY OR OPEN CUT
- OIL OR GAS WELLS
- GROUP OF STORAGE TANKS (OIL OR GAS)
- GRAVEL PIT
- GARBAGE OR RUBBISH DUMP

**GENERAL HIGHWAY AND TRANSPORTATION MAP  
BROWN COUNTY  
INDIANA**

PREPARED BY THE  
**DIVISION OF PLANNING  
INDIANA STATE HIGHWAY COMMISSION**  
IN COOPERATION WITH THE  
**U. S. DEPARTMENT OF TRANSPORTATION  
FEDERAL HIGHWAY ADMINISTRATION**

SCALE - MILES  
0.00 0.50 1.00 2.00 3.00 4.00 5.00  
**1976**  
POLYCONIC PROJECTION

**ENVIRONMENTAL SYSTEMS  
APPLICATION CENTER**

APPROVAL DATE \_\_\_\_\_

DATE	REVISIONS	BY

