

Indiana's 2026 Assessment for Ongoing
Data Requirements for the 2010 Primary
1-Hour Sulfur Dioxide (SO₂) National
Ambient Air Quality Standard (NAAQS)

Prepared By:
The Indiana Department of
Environmental Management

May 2026

This page left intentionally blank.

DRAFT

TABLE OF CONTENTS

1.0 Background.....	1
2.0 Round 1 Areas.....	2
2.1 SOUTHWEST INDIANA, IN, MAINTENANCE AREA – PARTIAL DAVIESS COUNTY AND PARTIAL PIKE COUNTY (IPL – PETERSBURG GENERATING STATION).....	2
2.2 INDIANAPOLIS, IN, MAINTENANCE AREA – PARTIAL MARION COUNTY (CENTER, PERRY, AND WAYNE TOWNSHIPS).....	3
3.0 Round 2 Areas.....	5
3.1 SPENCER COUNTY (AEP – ROCKPORT STATION).....	6
3.2 LAPORTE COUNTY (NIPSCO – MICHIGAN CITY STATION).....	7
3.3 GIBSON COUNTY (DUKE ENERGY – GIBSON STATION).....	8
4.0 Round 3 Areas.....	9
4.1 HUNTINGTON COUNTY (U.S. MINERAL PRODUCTS - ISOLATEK).....	10
4.2 JASPER COUNTY (NIPSCO – R.M. SCHAHFER STATION).....	12
4.3 VERMILLION COUNTY (DUKE ENERGY – CAYUGA STATION).....	13
4.4 WARRICK COUNTY (KAISER ALUMINUM/NEWCO, ALCOA WARRICK POWER PLANT).....	14
4.5 LAKE COUNTY (CLEVELAND – CLIFFS STEEL (316), COKENERGY, U.S, STEEL GARY WORKS).....	15
4.5.1 Analysis of Modeling.....	18
4.5.2 Analysis of Maximum Impact.....	18
4.5.3 Analysis of Secondary Impact.....	21
5.0 Round 4 Areas.....	23
6.0 Public Participation.....	23

FIGURES

Figure 1: Lake County Area SO ₂ Sources And Percent Change In Emissions ...	19
Figure 2: Lake County Area SO ₂ Sources With Percent Change In Emissions and 2013-2015 1-Hour SO ₂ Modeled Impact Areas.....	20

CHARTS

Chart 1: SO ₂ Emissions for the Southwest Indiana, IN Maintenance Area	2
Chart 2: SO ₂ Emissions for the Indianapolis Indiana, IN Maintenance Area	4
Chart 3: SO ₂ Emissions for the Spencer County Area	6
Chart 4: SO ₂ Emissions for the LaPorte County Area	7
Chart 5: SO ₂ Emissions for the Jasper County Area.....	12
Chart 6: SO ₂ Emissions for the Vermillion County Area.....	13
Chart 7: SO ₂ Emissions for the Warrick County Area	15
Chart 8: SO ₂ Emissions for DRR – Identified Sources in Lake County	16

TABLES

Table 1: SO ₂ Emissions (tons) for Southwest Indiana, IN Maintenance Area	2
Table 2: SO ₂ Emissions (tons) for the Indianapolis, IN Maintenance Area	3
Table 3: SO ₂ Monitoring Data (ppb) for the Indianapolis, IN Maintenance Area ...	4
Table 4: Facilities Subject to the Round 2 Designation Process	5
Table 5: Ongoing Data Requirements Applicability for Round 2 Areas	5
Table 6: SO ₂ Emissions (tons) for the Spencer County Area	6
Table 7: SO ₂ Emissions (tons) for the LaPorte County Area	7
Table 8: Duke Energy's Gibson Station SO ₂ Monitoring Data.....	8
Table 9: Sources Subject to the Round 3 Designation Process.....	9
Table 10: Ongoing Data Requirements Applicability for Round 3 Areas	10
Table 11: Isolatek 2025 Hourly Stack Data and Limits.....	11
Table 12: SO ₂ Emissions (tons) for Jasper County Area	12
Table 13: SO ₂ Emissions (tons) for the Vermillion County Area	13
Table 14: SO ₂ Emissions (tons) for Round 3 Sources Warrick County.....	14
Table 15: SO ₂ Emissions (tons) for Round 3 Sources in Lake County	16
Table 16: SO ₂ Emissions (tons) for Lake County Area	17
Table 17: Projected Modeled Impacts (µg/m ³) at Maximum Modeled Location ..	21
Table 18: Projected Modeled Impacts (µg/m ³) at Secondary Maximum Modeled Location	22
Table 19: SO ₂ Monitoring Data Design Values (ppb) for Lake County.....	22
2014-2016 through 2023-2025	22

Table 20: Sources Subject to the Round 4 Designation Process.....23
Table 21 : Indiana Port (Cleveland-Cliffs Burns Harbor) SO₂ Monitoring Data ...23

ATTACHMENTS

Attachment 1: 2025 Quarterly Reports for United States Mineral Products
Company d.b.a. Isolatek International

Attachment 2: Public Participation Process Documentation

DRAFT

This page left intentionally blank.

DRAFT

Indiana's 2026 Assessment for Ongoing Data Requirements for the 2010 Primary 1-Hour Sulfur Dioxide National Ambient Air Quality Standard

1.0 Background

Implementation of the 2010 primary 1-hour SO₂ standard began with Round 1 designations in 2013 when the United States Environmental Protection Agency (U.S. EPA) established nonattainment areas near monitors with data greater than the SO₂ NAAQS. Indiana's Round 1 areas were subsequently designated "attainment" and are not subject to ongoing data requirements. The Southwest IN, and Indianapolis, IN, maintenance areas, which were part of Round 1, are included in this analysis to address continuing contingency plan triggers due to the discontinuation of SO₂ monitors in these areas. To evaluate the remaining areas of the country, U.S. EPA established three additional rounds of designations: Round 2 on June 30, 2016, Round 3 on December 21, 2017, and Round 4 on December 21, 2020. This evaluation, per 40 Code of Federal Regulations (CFR) Subpart BB §51.1205(a) and (b), addresses areas designated during Rounds 2, 3, and 4.

For these designated areas, ongoing data requirements are applicable if SO₂ monitoring and modeling using actual emissions was used as the basis for demonstrating attainment of the NAAQS during the designations process. For areas that used monitoring, ongoing requirements are the continued operation of the SO₂ monitoring network and the reporting of such data. For areas that used modeling, ongoing requirements are the assessment of annual SO₂ emissions and a recommendation regarding whether additional modeling is needed to characterize air quality to determine whether the area continues to meet the SO₂ NAAQS. However, per §51.1205(b)(2), if modeling demonstrates that air quality values at all receptors in the analysis area are no greater than 50% of the standard, and such demonstration is approved by the U.S. EPA Regional Administrator, the ongoing requirements of §51.1205(b) do not apply. Ongoing data requirements are also not applicable to sources that relied on federally enforceable and permanent SO₂ emission limits as the basis for establishing designations demonstrating that the area will not violate the 2010 SO₂ NAAQS.

For areas where modeling shows ambient impacts greater than 50% of the standard¹, U.S. EPA generally recommends updated modeling under the following circumstances:

- The original modeling was between 50% and 90% of the standard (98.1 – 176.58 µg/m³) and emissions increase by 15% or more.
- The original modeling was equal to or greater than 90% of the standard (176.58 µg/m³) and there is any increase in emissions.

¹ Concentrations may be expressed in parts per billion (ppb) and/or micrograms per cubic meter (µg/m³).

2.0 Round 1 Areas

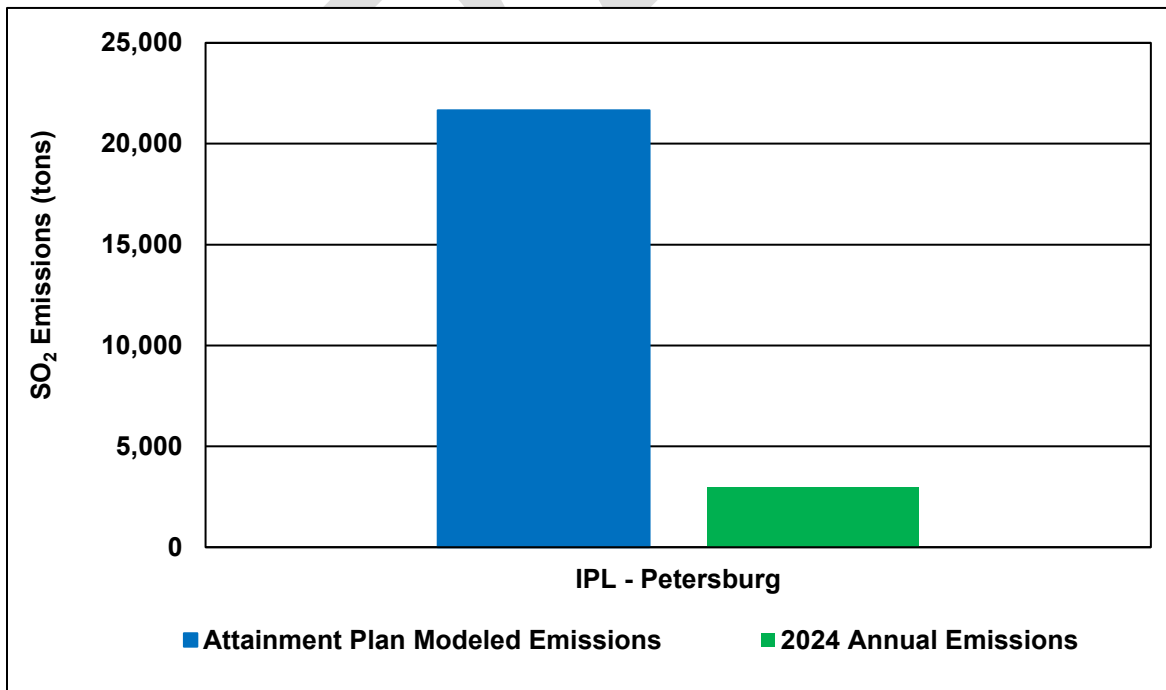
2.1 Southwest Indiana, IN, Maintenance Area – Partial Daviess County and Partial Pike County (IPL – Petersburg Generating Station)

All SO₂ ambient air quality monitors have discontinued operation in Southwest Indiana, IN maintenance area. To verify continued attainment with the NAAQS and determine whether additional studies are needed, Indiana will continue to monitor contingency plan triggers by comparing the annual tons per year SO₂ emissions from the IPL – Petersburg Generating Station to modeled emission limits (i.e., equivalent 21,661 tons per year) used in the 1-hour SO₂ attainment demonstration. The modeling was based on never-to-exceed maximum allowable rates that provide an ample margin of safety and are protective of the NAAQS. The analysis for the Southwest Indiana, IN maintenance area is documented in Table 1 and Chart 1.

Table 1: SO₂ Emissions (tons) for Southwest Indiana, IN Maintenance Area

Source Name	Attainment Plan Modeled Emissions	2024	Change	Percent Change
IPL – Petersburg	21,661	2,959	-18,702	-86%

Chart 1: SO₂ Emissions for the Southwest Indiana, IN Maintenance Area



As outlined in Table 1 and Chart 1, IPL – Petersburg’s 2024 annual SO₂ emissions are approximately 86% lower than the modeled emission limits. Based on this SO₂ emission assessment, Indiana recommends no additional modeling is needed to further characterize air quality in the Southwest Indiana, IN maintenance area. SO₂ emissions have trended downward from what was modeled to demonstrate attainment of the 2010 primary 1-hour SO₂ NAAQS. The area is currently designated as “attainment/unclassifiable” and no changes to its classification are necessary at this time.

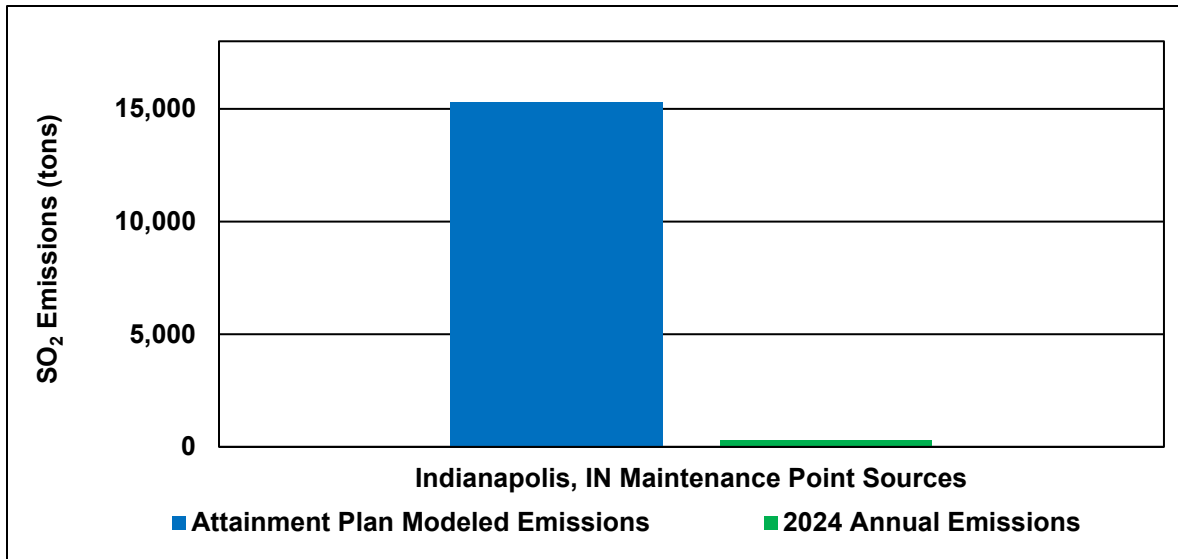
2.2 Indianapolis, IN, Maintenance Area – Partial Marion County (Center, Perry, and Wayne Townships)

The Harding Street SO₂ ambient air quality monitor was discontinued after the calendar year 2022. This monitor was located in the Indianapolis, IN SO₂ maintenance area within Center Township, Indianapolis, Indiana, along with the Washington Park SO₂ monitor which will remain in operation. To verify continued attainment with the NAAQS and determine whether additional studies are needed, Indiana will continue to monitor contingency plan triggers by evaluating SO₂ concentration values at the Indianapolis – Washington Park SO₂ monitor, as well as comparing annual SO₂ emissions from sources within the maintenance area. The modeling was based on never-to-exceed maximum-allowable rates that provide an ample margin of safety and are protective of the NAAQS. The analysis for the Indianapolis, IN maintenance area, is documented in Tables 2 and 3, and Chart 2.

Table 2: SO₂ Emissions (tons) for the Indianapolis, IN Maintenance Area

Source Name	Attainment Plan Modeled Emissions	2024	Change	Percent Change
Modeled Point Sources	15,312	279	-15,033	-98%

Chart 2: SO₂ Emissions for the Indianapolis Indiana, IN Maintenance Area



As outlined in Table 2 and Chart 2, 2024 SO₂ emissions from modeled point sources in the Indianapolis, IN maintenance area are approximately 98% lower than the modeled emission limits.

Table 3: SO₂ Monitoring Data (ppb) for the Indianapolis, IN Maintenance Area

Site ID	Site Name	County	99th Percentile Values (ppb)							Three-Year Design Value (ppb)				
			2019	2020	2021	2022	2023	2024	2025	19-21	20-22	21-23	22-24	23-25
180970057	Indpls - Harding St.**	Marion	4.7*	6.1	7.6*	6.6	---	---	---	6	7	---	---	---
180970078	Indpls - Washington Park	Marion	2.7*	3.7	2.8	2.7	2.6	2.3	2.8	3	3	3	3	3

Note: Three-year design value must be equal to or less than 75 ppb to attain the standard

*Incomplete data

**Site discontinued 12/31/22

As shown in Table 3, annual 99th percentile daily maximum 1-hour values and corresponding three-year design values demonstrate SO₂ concentrations have remained well below the standard in the Indianapolis, IN area. Based on this SO₂ assessment, Indiana recommends no additional modeling is needed to further characterize air quality in the Indianapolis, Indiana maintenance area. SO₂ emissions have trended downward from what was modeled to demonstrate attainment of the 2010 primary 1-hour SO₂ NAAQS. The area is currently designated as “attainment/unclassifiable” and no changes to its classification are necessary at this time.

3.0 Round 2 Areas

During Round 2 designations, five coal-fired electric power plants in Indiana were identified, shown in Table 4, around which air quality characterization was required.

Table 4: Facilities Subject to the Round 2 Designation Process

County	Source
Spencer	American Electric Power (AEP) – Rockport Station
La Porte	Northern Indiana Public Service Company (NIPSCO) – Michigan City Station
Posey	Vectren – A.B. Brown Station
Jefferson	Indiana-Kentucky Electric Corporation (IKEC) – Clifty Creek Station
Gibson	Duke Energy – Gibson Station

On June 30, 2016, U.S. EPA completed designations for Round 2 designating the areas surrounding Indiana’s five identified sources as “attainment/unclassifiable”. The final rule was published in the Federal Register (FR) on July 12, 2016 (81 FR 45039). The applicability of ongoing requirements for Round 2 areas is shown in Table 5.

Table 5: Ongoing Data Requirements Applicability for Round 2 Areas

Area	Source(s)	Modeled Impact ($\mu\text{g}/\text{m}^3$)	Greater Than 50% NAAQS?	Ongoing Data Requirements Applicability?
Spencer	AEP – Rockport Station	152.1	Yes	Yes
La Porte	NIPSCO – Michigan City Station	169.9	Yes	Yes
Posey	Vectren – A.B. Brown Station	196.08	Yes	No (Emission limits used for designation.)
Jefferson	IKEC – Clifty Creek Station	71.6	No	No (Emission limits used for designation.)
Gibson	Duke Energy – Gibson Station	NA (Monitoring used for designation.)		Yes

As shown in Table 5, ongoing data requirements are applicable to only three of the five Round 2 areas. Each area is discussed below.

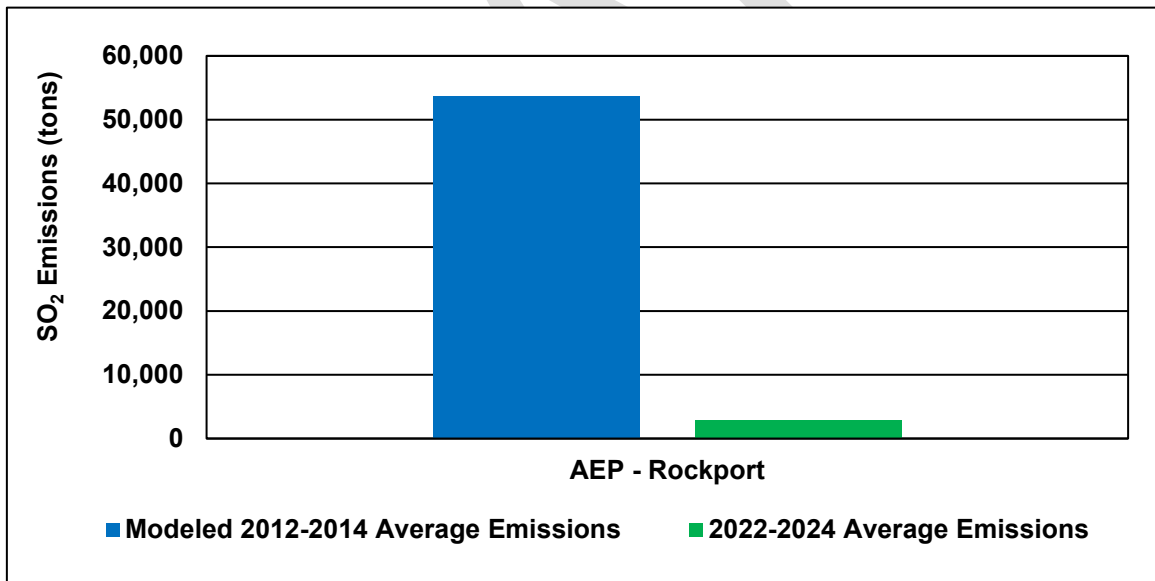
3.1 Spencer County (AEP – Rockport Station)

For Spencer County, on September 16, 2015, Indiana submitted air quality modeling to U.S. EPA that demonstrated air quality values were greater than 50%, but less than 90%, of the 1-hour SO₂ NAAQS. As such, the SO₂ emissions assessment requirement in 40 CFR §51.1205(b) is applicable and an emissions increase greater than 15% may necessitate additional modeling analyses to characterize air quality in the area. The primary source associated with the Spencer County area is AEP’s Rockport Station. The analysis for the Spencer County area focused on the most recent three years of data and is documented in Table 6 and Chart 3.

Table 6: SO₂ Emissions (tons) for the Spencer County Area

Source Name	2012	2013	2014	Modeled 2012-2014 Average	2022	2023	2024	2022-2024 Average	Change	Percent Change
AEP - Rockport	54,390	51,636	54,979	53,668	3,726	2,008	3,240	2,991	-50,677	-94%

Chart 3: SO₂ Emissions for the Spencer County Area



As outlined in Table 6 and Chart 3, average SO₂ emissions for 2022-2024 have decreased approximately 94% from the averaged SO₂ emissions for 2012-2014 used in the modeling for designations. Based on this SO₂ emissions assessment, Indiana recommends no additional modeling is needed to further characterize air quality in Spencer County. SO₂ emissions have trended downward from what was modeled to demonstrate attainment of the 2010 primary 1-hour SO₂ NAAQS. The area is currently designated as “attainment/unclassifiable” and no changes to its classification are necessary at this time.

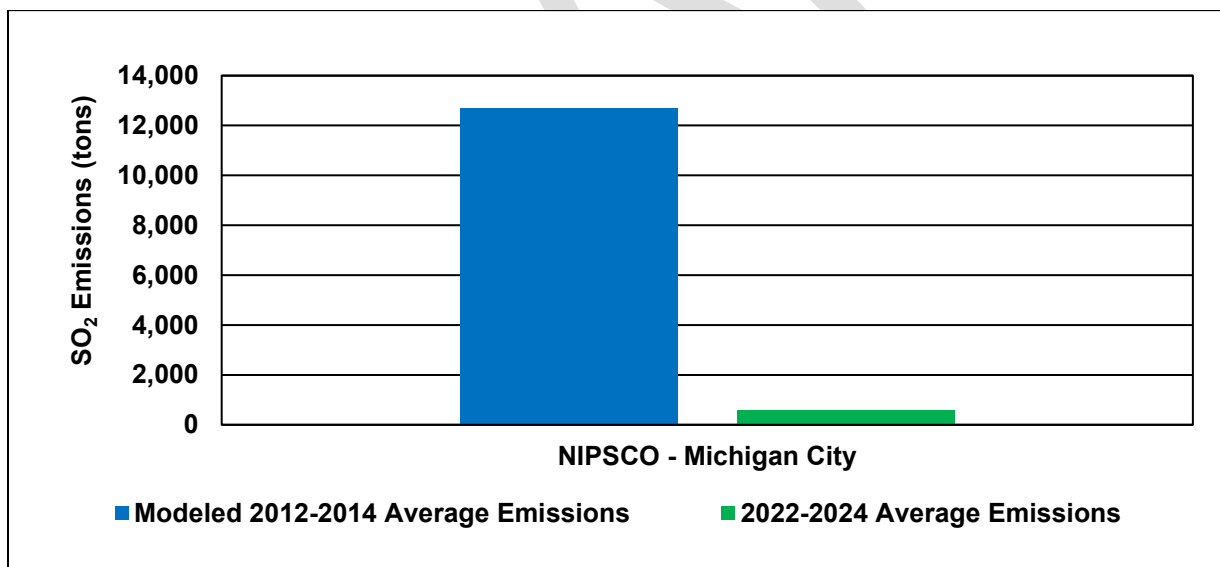
3.2 LaPorte County (NIPSCO – Michigan City Station)

For LaPorte County, on September 16, 2015, Indiana submitted air quality modeling to U.S. EPA that demonstrated air quality values were greater than 50%, but less than 90%, of the 1-hour SO₂ NAAQS. As such, the SO₂ emissions assessment requirement in 40 CFR §51.1205(b) is applicable and an emissions increase greater than 15% may necessitate additional modeling analyses to characterize air quality in the area. The primary source associated with the LaPorte County area is NIPSCO’s Michigan City Station. The analysis for LaPorte County focused on the most recent three years of data is documented in Table 7 and Chart 4.

Table 7: SO₂ Emissions (tons) for the LaPorte County Area

Source Name	2012	2013	2014	Modeled 2012-2014 Average	2022	2023	2024	2022-2024 Average	Change	Percent Change
NIPSCO – Michigan City	11,584	10,429	15,991	12,668	685	640	440	588	-12,080	-95%

Chart 4: SO₂ Emissions for the LaPorte County Area



As outlined in Table 7 and Chart 4, average SO₂ emissions for 2022-2024 have decreased approximately 95% from the averaged SO₂ emissions for 2012-2014 used in the modeling for designations. Based on this SO₂ emissions assessment, Indiana recommends no additional modeling is needed to further characterize air quality in LaPorte County. SO₂ emissions have trended downward from what was modeled to demonstrate attainment of the 2010 primary 1-hour SO₂ NAAQS. The area is currently designated as “attainment/unclassifiable” and no changes to its classification are necessary at this time.

3.3 Gibson County (Duke Energy – Gibson Station)

For Gibson County, because monitoring data was used to characterize air quality for Round 2 designations, ongoing data requirements are the continued operation of SO₂ monitors as well as continued reporting of such data. Duke Energy continues to operate the SO₂ monitoring network and data is reported to U.S. EPA’s Air Quality System (AQS) database. It is worth noting that certified ambient air quality monitoring data continues to demonstrate attainment of the 2010 primary 1-hour SO₂ standard as shown in Table 8.

Table 8: Duke Energy’s Gibson Station SO₂ Monitoring Data

Site ID	County	99th Percentile Values (ppb)							Three-Year Design Value (ppb)				
		2019	2020	2021	2022	2023	2024	2025	2019-2021	2020-2022	2021-2023	2022-2024	2023-2025
180510002	Gibson	41.3	59.3	37.2	33.8	21.9	36.0	40.2	46	43	31	31	33

Note: Three-year design value must be equal to or less than 75 ppb to attain the standard.

4.0 Round 3 Areas

During Round 3 designations, eleven sources in Indiana, shown in Table 9, were identified around which SO₂ air quality characterization was required.

Table 9: Sources Subject to the Round 3 Designation Process

County	Source
Floyd	Duke Energy – Gallagher Station
Huntington	U.S. Mineral Products – Isolatek
Jasper	NIPSCO - R.M. Schahfer Station
Lake	Cleveland-Cliffs Steel (316) ¹
Lake	Cokenergy
Lake	U.S. Steel Gary Works
Posey	SABIC – Innovative Plastics
Sullivan	Hoosier Energy – Merom Station
Vermillion	Duke Energy – Cayuga Station
Warrick	Kaiser Aluminum/Newco ²
Warrick	ALCOA Power Plant

¹ Formerly known as Arcelor Mittal USA

² Formerly known as ALCOA Warrick Operations

On December 21, 2017, U.S. EPA completed designations for Round 3 designating areas associated with ten of the eleven identified sources as “attainment/unclassifiable”. One area, Huntington Township, associated with U.S. Mineral Products – Isolatek, in Huntington County, was designated “nonattainment”. The final rule was published in the Federal Register on January 9, 2018 (83 FR 1098).

Table 10: Ongoing Data Requirements Applicability for Round 3 Areas

Area	Source(s)	Modeled Impact ($\mu\text{g}/\text{m}^3$)	Greater Than 50% NAAQS?	Ongoing Data Requirements Applicability?
Floyd	Duke Energy – Gallagher Station	99.5	Yes	No (Source Permanently Closed/Dismantled)
Huntington	U.S. Mineral Products – Isolatek	Not Applicable	Not Applicable	Yes (Commissioner’s Order)
Jasper	NIPSCO – R.M. Schahfer Station	162.7	Yes	Yes
Lake	Cleveland-Cliffs Steel (316) ¹ Cokenergy U.S. Steel Gary Works	192.2 ²	Yes	Yes
Posey	SABIC – Innovative Plastics	191.9	Yes	No (Emission limits used for designation.)
Sullivan	Hoosier Energy – Merom Station	63.0	No	No
Vermillion	Duke Energy – Cayuga Station	176.4	Yes	Yes
Warrick	Kaiser Aluminum/Newco ³ ALCOA Warrick Power Plant	189.7	Yes	Yes

¹ Formerly known as ArcelorMittal USA.

² Modeled impact associated with the Carmeuse Lime facility, which accepted permanent and enforceable SO₂ permit limits to demonstrate attainment of the 1-hr NAAQS.

³ Formerly known as ALCOA Warrick Operations.

As shown in Table 10, ongoing data requirements are applicable to only five of the eight Round 3 areas. Each area is discussed below.

4.1 Huntington County (U.S. Mineral Products - Isolatek)

On February 12, 2024, IDEM and Isolatek entered into Commissioner’s Order 2023-Air-02 to establish revised emission limits for the facility that became permanent and federally enforceable on August 14, 2025, when U.S. EPA approved the order as part of Indiana’s state implementation plan (90 FR 39130). Commissioner’s Order 2023-Air-02 served as the basis for IDEM’s attainment demonstration and technical support document and request for redesignation and maintenance plan.²

² On November 6, 2023, permanent and enforceable SO₂ emission limitations and rates were set forth in Commissioner’s Order 2023-Air-01 for Isolatek for attainment of the 1-hour SO₂ standards in the area surrounding the facility. On February 12, 2024, Commissioner’s Order 2023-Air 01 was amended and replaced by Commissioner’s Order 2023-Air-02, which imposes additional compliance terms and conditions in addition to the established emission limits and conditions contained in Commissioner’s Order 2023-Air-01.

Under the Order, Isolatek is required to meet emission limits for Stack No. 1 and Stack No. 3. Table 11 summarizes quarterly compliance reports for 2025 and demonstrates that Isolatek remains in compliance by staying below the established limits for both stacks.

Table 11: Isolatek 2025 Hourly Stack Data and Limits

Month	Hourly SO ₂ Stack Limit #1 (lbs/hr)	Average Hourly SO ₂ Stack #1 (lbs/hr)	Hourly SO ₂ Stack Limit #3 (lbs/hr)	Average Hourly SO ₂ Stack #3 (lbs/hr)
January	160	94.44	20	0.48
February		98.30		0.50
March		107.51		0.55
April		120.81		0.61
May		126.04		0.64
June		110.85		0.56
July		112.44		0.57
August		101.08		0.51
September		111.60		0.57
October		103.94		0.53
November		113.55		0.58
December		101.17		0.51

As presented in Table 11, the hourly stack emissions data for the 2025 reporting year remain well below the applicable emission limits. Additional documentation demonstrating Isolatek’s continued compliance with the requirements outlined in the Commissioner’s Order includes the 2025 Quarterly Reports in Attachment 1, which are provided with this submittal. Furthermore, Huntington County was redesignated to attainment on January 9, 2026 (91 FR 911). Based on the information provided, no additional requirements are recommended at this time.

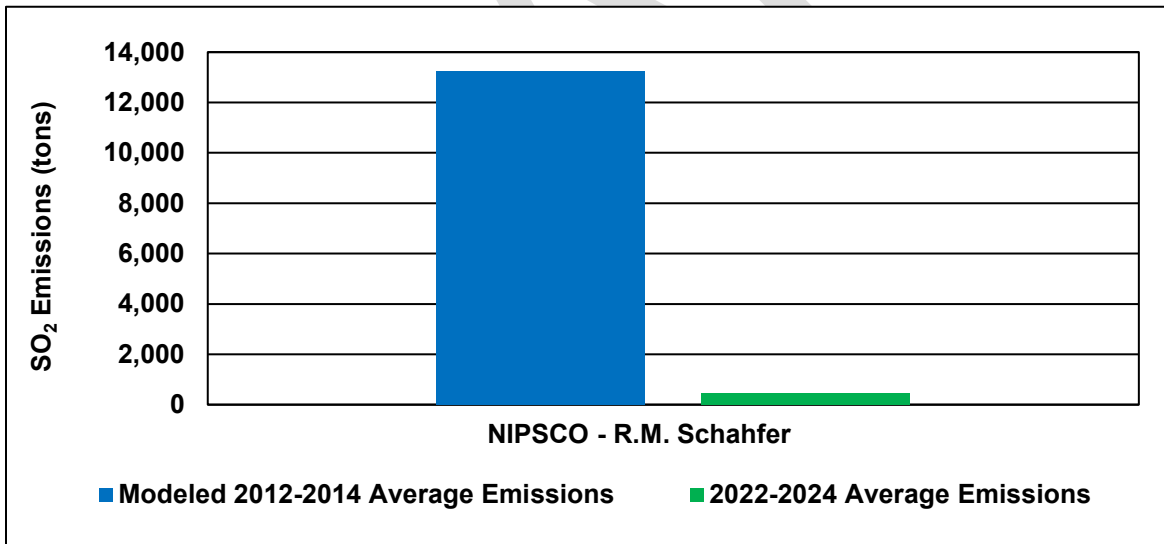
4.2 Jasper County (NIPSCO – R.M. Schahfer Station)

For Jasper County, on January 13, 2017, Indiana submitted air quality modeling to U.S. EPA that demonstrated air quality values were greater than 50%, but less than 90%, of the 1-hour SO₂ NAAQS. As such, the SO₂ emissions assessment requirement in 40 CFR §51.1205(b) is applicable and emissions increase greater than 15% may necessitate additional modeling analyses to characterize air quality in the area. The primary source associated with the Jasper County area is NIPSCO's R.M. Schahfer Station. The analysis for the Jasper County area focused on the most recent three years of data and is documented in Table 12 and Chart 5.

Table 12: SO₂ Emissions (tons) for Jasper County Area

Source Name	2012	2013	2014	Modeled 2012-2014 Average	2022	2023	2024	2022-2024 Average	Change	Percent Change
NIPSCO – R.M. Schahfer	14,911	16,418	8,413	13,247	556	464	395	472	-12,775	-96%

Chart 5: SO₂ Emissions for the Jasper County Area



As outlined in Table 12 and Chart 5, average SO₂ emissions for 2022-2024 have decreased approximately 96% from the averaged SO₂ emissions for 2012-2014 used in the modeling designations. Based on this SO₂ emissions assessment, Indiana recommends no additional modeling is needed to further characterize air quality in Jasper County. SO₂ emissions have trended downward from what was modeled to demonstrate attainment of the 2010 primary 1-hour SO₂ NAAQS. The area is currently designated as “attainment/unclassifiable” and no changes to its classification are necessary at this time.

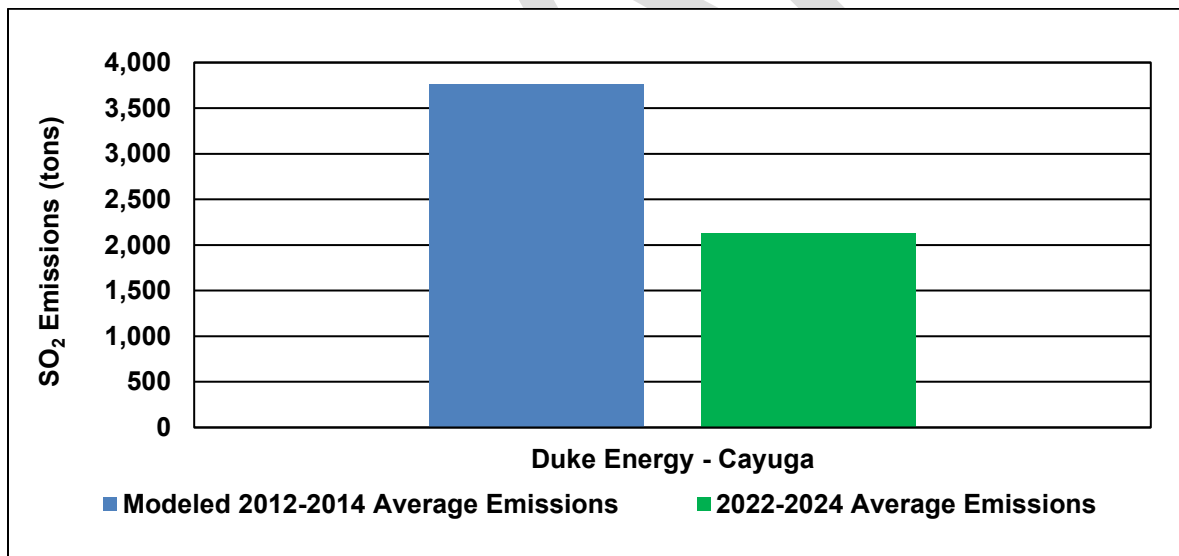
4.3 Vermillion County (Duke Energy – Cayuga Station)

For Vermillion County, on January 13, 2017, Indiana submitted air quality modeling to U.S. EPA that demonstrated air quality values were greater than 50%, but less than 90%, of the 1-hour SO₂ NAAQS. As such, the SO₂ emissions assessment requirement in 40 CFR §51.1205(b) is applicable and emissions increase greater than 15% may necessitate additional modeling analyses to characterize air quality in the area. The primary source associated with the Vermillion County area is Duke Energy’s Cayuga Station. The analysis for the Vermillion County area focused on the most recent three years of data and is documented in Table 13 and Chart 6.

Table 13: SO₂ Emissions (tons) for the Vermillion County Area

Source Name	2012	2013	2014	Modeled 2012-2014 Average	2022	2023	2024	2022-2024 Average	Change	Percent Change
Duke Energy – Cayuga	3,223	4,628	3,448	3,766	1,668	2,425	2,312	2,135	-1,631	-43%

Chart 6: SO₂ Emissions for the Vermillion County Area



As outlined in Table 13 and Chart 6, average SO₂ emissions for 2022-2024 have decreased approximately 43% from the averaged SO₂ emissions for 2012-2014 used in the modeling for designations. Based on this SO₂ emissions assessment, Indiana recommends no additional modeling is needed to further characterize air quality in Vermillion County. SO₂ emissions have trended downward from what was modeled to demonstrate attainment of the 2010 primary 1-hour SO₂ NAAQS. The area is currently designated as “attainment/unclassifiable” and no changes to its classification are necessary at this time.

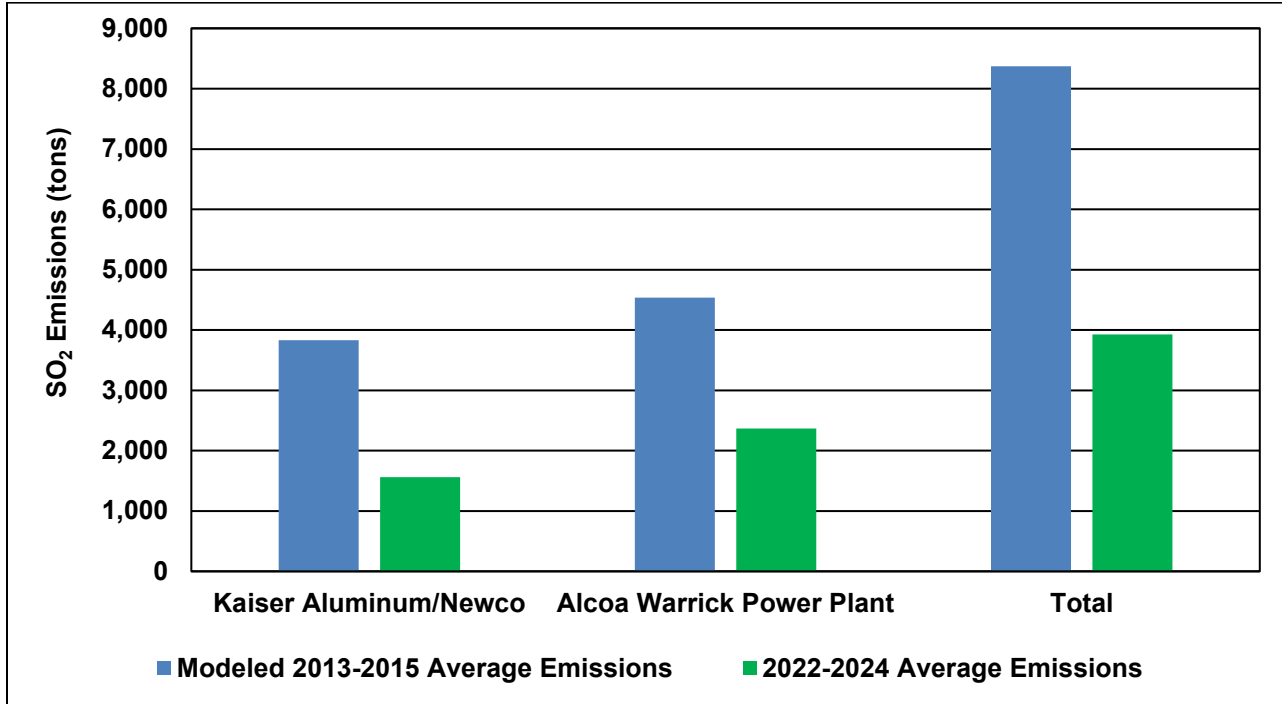
4.4 Warrick County (Kaiser Aluminum/Newco, ALCOA Warrick Power Plant)

For Warrick County, on October 18, 2017, Indiana submitted air quality modeling to U.S. EPA that demonstrated air quality values greater than 90% of the 1-hour SO₂ NAAQS. As such, the SO₂ emissions assessment requirement in 40 CFR §51.1205(b) is applicable and any emissions increase may necessitate additional modeling analyses to characterize air quality in the area. The primary sources associated with the Warrick County area are Kaiser Aluminum/Newco and ALCOA Warrick Power Plant. The analysis for Warrick County focused on the most recent three years of data and is documented in Table 14 and Chart 7.

Table 14: SO₂ Emissions (tons) for Round 3 Sources Warrick County

Source Name	2013	2014	2015	Modeled 2013-2015 Average	2022	2023	2024	2022-2024 Average	Change	Percent Change
Kaiser Aluminum/ Newco	3,852	3,500	4,147	3,833	1,543	1,237	1,899	1,560	-2,273	-59%
ALCOA Warrick Power Plant	5,707	4,993	2,907	4,536	2,571	2,571	1,954	2,365	-2,171	-48%
Total	9,559	8,493	7,054	8,369	4,114	3,808	3,853	3,925	-4,444	-53%

Chart 7: SO₂ Emissions for the Warrick County Area



As outlined in Table 14 and Chart 7, averaged SO₂ emissions for 2022-2024 have decreased approximately 59% and 48% for Kaiser Aluminum/Newco and ALCOA Warrick Power Plant, respectively, from the averaged SO₂ emissions for 2013-2015 used in the modeling for designations. Based on this SO₂ emissions assessment, Indiana recommends no additional modeling is needed to further characterize air quality in Warrick County. SO₂ emissions have trended downward from what was modeled to demonstrate attainment of the 2010 primary 1-hour SO₂ NAAQS. The area is currently designated as “attainment/unclassifiable” and no changes to its classification is necessary at this time.

4.5 Lake County (Cleveland – Cliffs Steel (316), Cokenergy, U.S, Steel Gary Works)

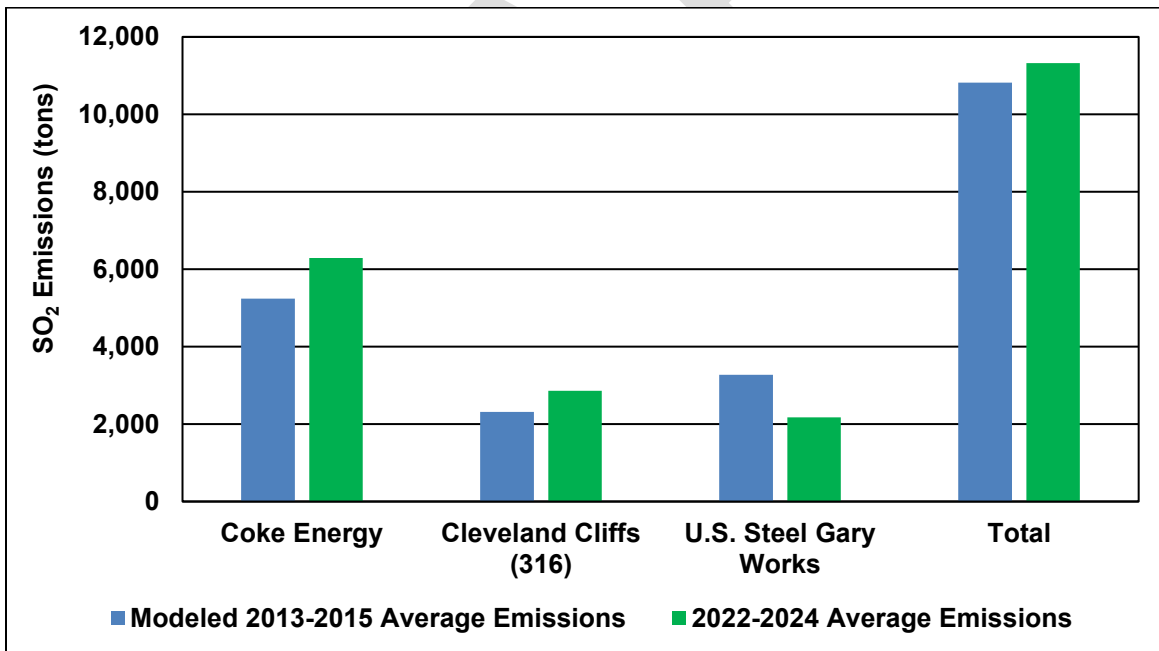
Indiana submitted air quality modeling for Lake County to U.S. EPA on January 13, 2017 that demonstrated air quality values greater than 90% of the 1-hour SO₂ NAAQS. As such, the SO₂ emission assessment requirement in 40 CFR §51.1205(b) is applicable and any emissions increase may necessitate additional modeling analyses to characterize air quality in the area. The emissions analysis for Lake County focused on the most recent three years of data, as documented in Tables 15 and 16, and Chart 8, as seen below.

Table 15: SO₂ Emissions (tons) for Round 3 Sources in Lake County

Source Name	2013	2014	2015	Modeled 2013-2015 Average	2022	2023	2024	2022-2024 Average	Change	Percent Change
Cokenergy	4,653	4,952	6,104	5,236	6,256	6,258	6,358	6,291	1,055	20%
Cleveland-Cliffs Steel (316) ¹	2,369	2,163	2,398	2,310	3,613	2,620	2,341	2,858	548	24%
U.S. Steel Gary Works	3,564	3,285	2,980	3,276	2,523	2,062	1,932	2,172	-1,104	-34%
Total	10,586	10,400	11,482	10,822	12,392	10,940	10,631	11,321	499	5%

¹ Formerly known as ArcelorMittal USA.

Chart 8: SO₂ Emissions for DRR – Identified Sources in Lake County



As outlined in Table 15 and Chart 8, averaged SO₂ emissions for 2022-2024 increased 20% and 24% for Cokenergy and Cleveland-Cliffs Steel (316), while the U.S. Steel Gary Works emissions decreased 34% from 2013-2015 SO₂ emissions used in the modeling designations. Average total emissions from the three DRR-identified sources for 2022-2024 increased 499 tons, approximately 5% above what was modeled.

To determine if additional modeling is warranted, Indiana examined, as shown in Table 16, the SO₂ emissions from all sources included in the modeling for designations.

Table 16: SO₂ Emissions (tons) for Lake County Area

Source Name	2013	2014	2015	Modeled 2013-2015 Average	2022	2023	2024	2022-2024 Average	Change	Percent Change
Cokenergy	4,653	4,952	6,104	5,236	6,256	6,258	6,358	6,291	1,055	20%
Cleveland-Cliffs Steel (316) ⁴	2,369	2,163	2,398	2,310	3,613	2,620	2,341	2,858	548	24%
U.S. Steel	3,564	3,285	2,980	3,276	2,523	2,062	1,932	2,172	-1,104	-34%
Safety Kleen	56	68	63	62	34	41	38	38	-24	-39%
Holcim US Inc ⁶	129	113	127	123	137	122	142	134	11	9%
Eco Services	347	215	205	256	384	223	275	294	38	15%
Cleveland-Cliffs Steel (318) ³	1,638	1,587	1,067	1,431	231	57	56	115	-1,316	-92%
Cleveland-Cliffs Burns Harbor ⁵	13,864	12,189	12,202	12,752	10,024	10,686	11,768	10,826	-1,926	-15%
BP Products Whiting	----	----	400 ¹	400	319	259	577	385	-15	-4%
Ironside Energy	231	274	108	204	0	0	0	0	-204	-100%
Carmeuse Lime	----	----	----	263 ²	277	64	41	127	-136	-52%
Indiana Harbor Coke Co.	4,668	1,838	817	2,441	0	302	302	201	-2,240	-92%
Kopper, Inc.	1,096	870	669	878	253	261	301	272	-606	-69%
NIPSCO Bailly	2,474	1,117	515	1,369	0	0	0	0	-1,369	-100%
Total	35,089	28,671	27,655	31,001	24,051	22,955	24,131	23,712	-7,289	-24%

¹ Based on 2015 due to Whiting Refinery Modernization Project.

² Based on maximum allowable emissions taken from Commissioner's Order #2016—04.

³ Formerly known as ArcelorMittal Indiana Harbor.

⁴ Formerly known as ArcelorMittal USA.

⁵ Formerly known as ArcelorMittal Burns Harbor.

⁶ Formerly known as Lafarge.

SO₂ emissions have decreased 24% throughout the Lake County area from what was modeled during the designation process. The increases, totaling 1,652 TPY, are more than offset by the emission decreases totaling 8,941 TPY from the remaining sources.

4.5.1 Analysis of Modeling

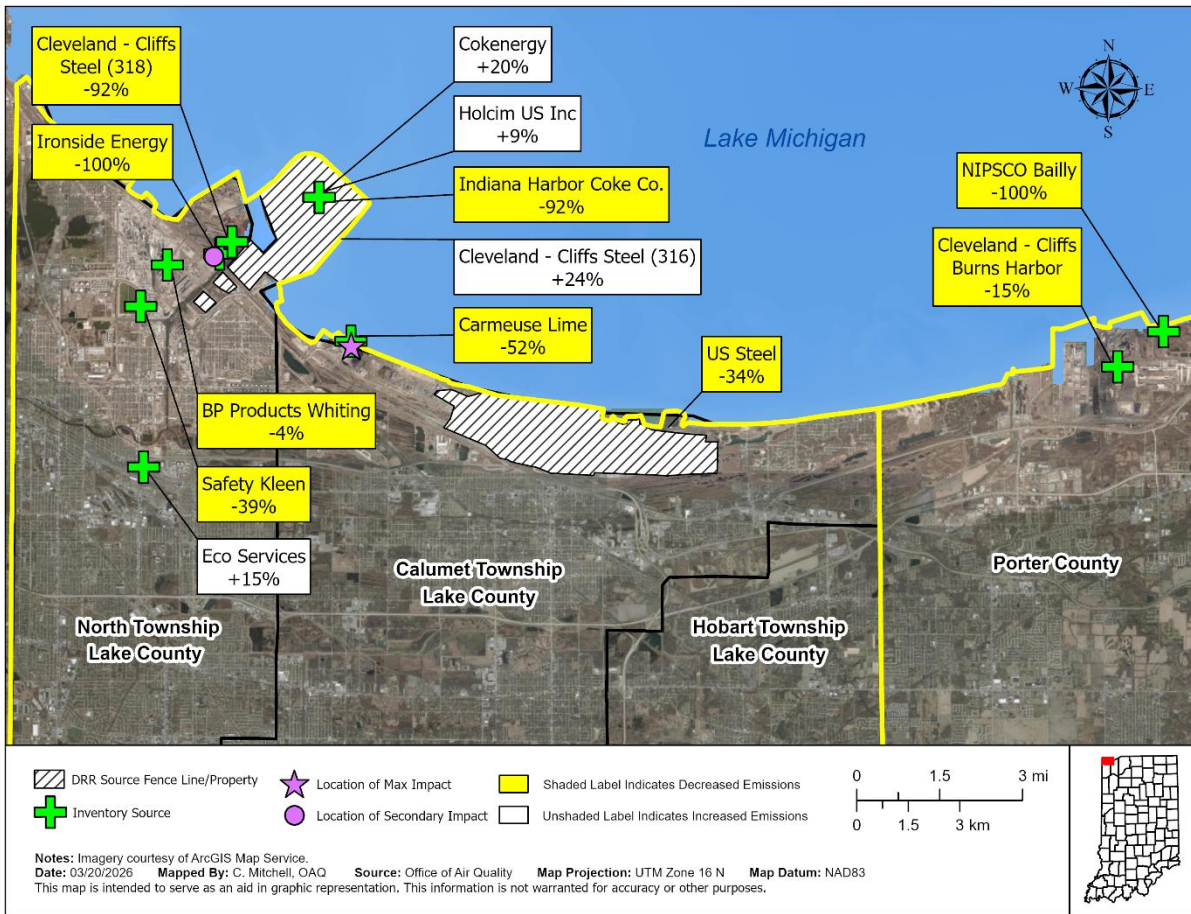
In addition, IDEM reviewed the modeling for Lake County used for designation purposes to determine the potential impact of the emissions changes.

4.5.2 Analysis of Maximum Impact

As shown in Figures 1 and 2, the location of maximum impact for the 1-hour SO₂ attainment designation for Lake County is located near the Carmeuse facility. The maximum modeled concentration was 192.2 micrograms per cubic meter (µg/m³).

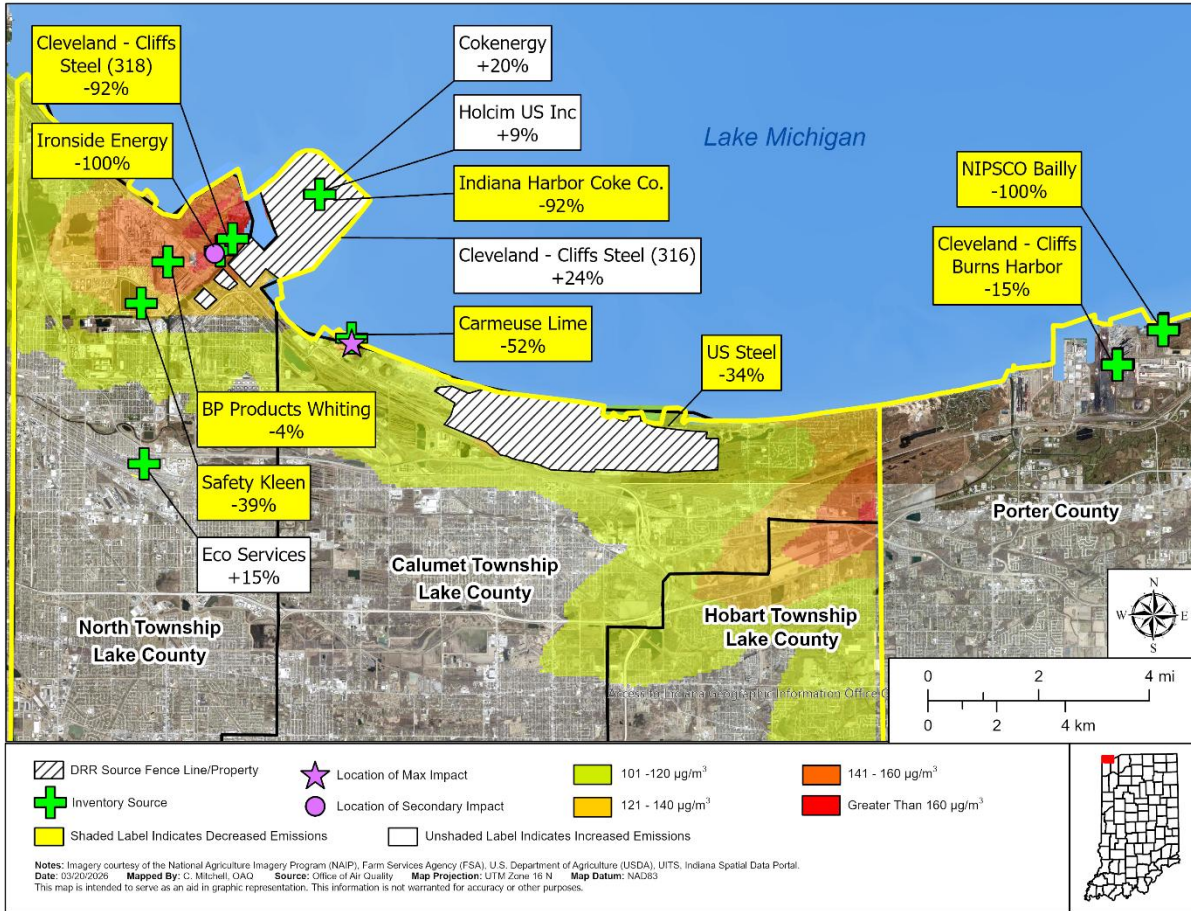
The Carmeuse Lime facility, although not an identified source under Round 3 designations, accepted permanent and enforceable SO₂ emission limits to address SO₂ concentrations in the area and to demonstrate attainment of the 1-hour SO₂ NAAQS. It is unlikely that new modeling will show a higher impact given that significant emission reductions in the region and at the Carmeuse facility which has reported actual SO₂ emissions well below the limits used to demonstrate attainment of the NAAQS.

Figure 1: Lake County Area SO₂ Sources and Percent Change in Emissions



In addition, assuming a simple linear relationship in modeled impacts, and the percent change in emissions from each source in the area, the overall 24% decrease in emissions from all modeled sources in the Lake County area would show a decrease projected SO₂ concentrations. Figure 2 shows the relationship of the modeled sources in Lake and Porter counties to the 1-hour SO₂ modeled hot spots and how emission changes could influence the air quality impacts.

Figure 2: Lake County Area SO₂ Sources with Percent Change in Emissions and 2013-2015 1-Hour SO₂ Modeled Impact Areas



Based on the complexity of characterizing air quality in Lake County, it is appropriate to assess emissions and cumulative projected modeled impacts from all modeled sources.

Table 17 shows the modeled impacts on the maximum impact receptor, which was used for designation purposes. The results of this analysis show that if the maximum modeled impacts from each of the Lake County sources, using the 2013-2015 emissions, were added together, and compared to the projected modeled impacts incorporating 2022-2024 emission changes, the resulting total modeled impacts would be less than modeled previously. While this approach is conservative in nature, as the maximum modeled impacts for each individual source do not occur on the same hour and day, it does show the reduction in overall projected maximum modeled impacts because of the emission change from each source and indicates that the 1-hour SO₂ NAAQS will not be exceeded.

Table 17: Projected Modeled Impacts ($\mu\text{g}/\text{m}^3$) at Maximum Modeled Location

Sources	Maximum Modeled Impact from 2013-2015 Emissions	% Emissions Change 2013-2015 to 2022-2024	Projected Modeled Impact from 2022-2024 Emissions
Carmeuse Lime	156.3	-52%	75.0
Cleveland-Cliffs Steel (316) ²	53.1	24%	65.8
Cokenergy	41.1	20%	49.3
U.S. Steel Gary Works	26.8	-34%	17.7
All other modeled sources	27.8	-38%	17.2
Background ¹	17.8		17.8
Total	322.9		242.8

¹ Background concentrations averaged from seasonal hourly Hammond data on day/hour of top 12 highest modeled values.

² Formerly known as ArcelorMittal USA.

4.5.3 Analysis of Secondary Impact

As shown in Figures 1 and 2, a secondary maximum modeled impact area was located northwest of the highest modeled impact area. This secondary impact had a modeled concentration of $182.8 \mu\text{g}/\text{m}^3$.

Table 18 shows the modeled impacts on the secondary maximum location for the area, as well as the projected modeled impacts when the emission changes were considered. The results of this analysis show that if the maximum modeled impacts from each of the modeled Lake County area sources using the 2013-2015 emissions were added together and compared to the projected modeled impacts, that consider all emission changes from 2013-2015 to 2022-2024, the resulting modeled concentrations are less and will not violate the 1-hour SO_2 NAAQS. This approach is conservative in nature, as the maximum modeled impacts for each individual source do not occur on the same hour and day.

Table 18: Projected Modeled Impacts ($\mu\text{g}/\text{m}^3$) at Secondary Maximum Modeled Location

Sources	Maximum Modeled Impact from 2013-2015 Emissions	% Emissions Change 2013-2015 to 2022-2024	Projected Modeled Impact from 2021-2023 Emissions
Carmeuse Lime	11.9	-52%	5.7
Cleveland-Cliffs Steel (316) ²	78.3	24%	97.1
Cokenergy	54.6	20%	65.5
U.S. Steel Gary Works	17.5	-34%	11.6
All other modeled sources	106.1	-38%	65.8
Background ¹	17.8		17.8
Total	286.2		263.5

¹ Background concentrations averaged from seasonal hourly Hammond data on day/hour of top 12 highest modeled values.

² Formerly known as ArcelorMittal USA.

Also, it is worth noting that certified ambient air quality monitoring data from Lake County, as shown in Table 19, demonstrates attainment of the 2010 primary 1-hour SO₂ standard.

Table 19: SO₂ Monitoring Data Design Values (ppb) for Lake County 2014-2016 through 2023-2025

Site ID	Site Name	14-16	15-17	16-18	17-19	18-20	19-21	20-22	21-23	22-24	23-25
180890022	Gary - IITRI	39	34	30	32	31	33	28	25	27	29
180890034	East Chicago-Marina*					18**	18**	17	16	14	15
180892008	Hammond - 141st St.	22	22	20	19	22	22	19	18	18	23

Note: Three-year design value (DV) must be equal to or less than 75 ppb to attain the standard

* Site began operation 11/01/2019

** Incomplete data

Based on this assessment, Indiana recommends that additional modeling is not needed to further characterize air quality in Lake County. The area is currently designated as “attainment/unclassifiable” and no changes to their classification are necessary at this time.

5.0 Round 4 Areas

During Round 4 designations, one source in Indiana, shown in Table 20, was identified around which SO₂ air quality characterization was required.

Table 20: Sources Subject to the Round 4 Designation Process

County	Source
Porter	Cleveland-Cliffs Burns Harbor ¹

¹ Formerly known as ArcelorMittal Burns Harbor.

On December 21, 2020 U.S. EPA completed designations for Round 4 designating Porter County, as “attainment/unclassifiable”. The final rule was published in the Federal Register on March 26, 2021, and became effective on April 30, 2021 (86 FR 16055).

Monitoring data was used to characterize air quality for designation of Porter County. Ongoing data requirements are the continued operation of SO₂ monitors as well as the continued reporting of such data. Cleveland – Cliffs Burns Harbor continues to operate its Indiana Port SO₂ monitoring station located west of the facility. Data is reported to U.S. EPA’s Air Quality System (AQS) database. The Dunes Acre Substation SO₂ monitor was discontinued in 2020 due to monitored SO₂ values below 50% of the 1-hour SO₂ NAAQS.

Monitoring data for the years 2023-2025, as shown in Table 21, show a three-year average design value at the Indiana Port monitor below the 1-hour SO₂ NAAQS.

Table 21: Indiana Port (Cleveland-Cliffs Burns Harbor) SO₂ Monitoring Data

Site ID	County	99 th Percentile Values (ppb)						Three-Year Design Values (ppb)			
		2020	2021	2022	2023	2024	2025	20-22	21-23	22-24	23-25
181270028	Porter	80.5	72.5	44.9	79.4	50.6	63.0	66	66	58	64

Note: Three-year design value must be equal to or less than 75 ppb to attain standard.

6.0 Public Participation

IDEM is providing a 30-day public comment period concerning this submittal of the draft *2026 Assessment for Ongoing Data Requirements for the 2010 Primary 1-Hour Sulfur Dioxide National Ambient Air Quality Standard*. A copy of the public notice and certificate of publication is presented in Attachment 2.

This page left intentionally blank.

DRAFT

Attachment 1

2025 Quarterly Reports for United
States Mineral Products Company
d.b.a Isolatek International

This page intentionally left blank.



April 25th, 2025

Indiana Department of Environmental Management
Office of Air Quality
Mail Code: 61-50 IGCN 1003
100 N. Senate Ave.
Indianapolis, Indiana 46204-2251

IN THE MATTER OF:
ORDER OF THE COMMISSIONER
PURSUANT TO IC 13-14-2-1
FOR U.S. MINERAL PRODUCTS COMPANY
(D/B/A ISOLATEK INTERNATIONAL)

Re: Quarterly Compliance Report – January 1st -March 31st 2025
United States Mineral Products Company d.b.a. Isolatek International
Permit No. 069-38295-00021
ID No. 069-00021

Notice and Order of the Commissioner of the Department of Environmental Management dated February 12, 2024. The reporting period commenced on the first day of January 1st and concluded on March 31st 2025. SO₂ emissions calculated pursuant to the order for stack #1 (baghouse) which includes emissions from both Cupola Furnaces is a daily average of 100.083 lbs/hr. & Stack #3 (screen house stack from both screenhouses) a daily average of .51 lbs/hr. Total material throughput during this time frame was 10,440.33 tons for the quarter. Please note the SO₂ emission factor used for the entirety of this reporting period is based upon the stack test conducted April 16, 2024. This emission factor will be used as well in future reports until a subsequent form stack test is performed. The Plant was down and did not operate from February 3rd -February 9th due to a scheduled maintenance outage.

The compliance reports are as follows:

- A report of the monthly average hourly SO₂ emissions in pounds per hour from cupulas EU #1 and EU #2.
- A report of the monthly average hourly SO₂ emissions in pounds per hour from blow chambers EU #3 and EU #4.
- A report of throughput of all input materials (coke, slag, and other feed material (e.g., feldspar)) in pounds per hour for each cupula (EU #1 and EU #2) for each 12-hour shift.
- A report of throughput of output materials (mineral wool fiber, fly ash and slag waste) for a defined reported time period as shown in the report.

Respectfully Submitted,
Jason Trent
Regional Operations Manager-
Isolatek International

Huntington, Indiana
701 North Broadway Street
46750
Desk (260) -356-2040 ext. 351
Email: jtrent@Isolatek.com

Attachments

cc: Plant Compliance Records

**INDIANA DEPARTMENT OF ENVIRONMENTAL MANAGEMENT
OFFICE OF AIR QUALITY**

COMPLIANCE SECTION
SO2 Emissions

Source Name: United States Mineral Products Company d.b.a. Isolatek International
 Source Address: 701 N Broadway, Huntington, IN 46750
 Mailing Address: 701 N Broadway, Huntington, IN 46750

Jan 2, 2025 TO Mar 31, 2025

Date	Shift	Wool (tons/hr)	Flyash (tons/hr)	Slag Waste (tons/hr)	Run Hours
Jan 2, 2025	Day	0	23.21	0.72	4.5
Jan 2, 2025	Night	2.34	23.21	2.63	4.5
Jan 3, 2025	Day	3.64	8.7	0.87	12
Jan 3, 2025	Night	3.25	8.7	1.01	12
Jan 4, 2025	Day	2.75	8.7	1.03	12
Jan 4, 2025	Night	5.17	8.7	1.09	12
Jan 5, 2025	Day	0.68	9.5	0.95	11
Jan 5, 2025	Night	4.52	9.5	1.13	11
Jan 6, 2025	Day	4.45	8.7	0.95	12
Jan 6, 2025	Night	3.87	8.7	1.04	12
Jan 7, 2025	Day	4.4	8.7	1.26	12
Jan 7, 2025	Night	6.07	8.7	0.68	12
Jan 8, 2025	Day	7.55	26.11	0	4
Jan 8, 2025	Night	0.02	26.11	3.49	4
Jan 9, 2025	Day	4.29	9.65	1.65	11
Jan 9, 2025	Night	5.74	9.65	1.39	11
Jan 10, 2025	Day	6.31	9.28	1.48	11
Jan 10, 2025	Night	6.53	9.28	1.3	11
Jan 11, 2025	Day	5.68	8.51	1.06	12
Jan 11, 2025	Night	0.46	8.51	1.02	12
Jan 12, 2025	Day	3.8	8.51	0.73	12
Jan 12, 2025	Night	3.62	8.51	0.75	12
Jan 13, 2025	Day	1.7	8.51	0.91	12
Jan 13, 2025	Night	4.82	8.51	0.98	12
Jan 14, 2025	Day	5.91	8.65	0.84	12
Jan 14, 2025	Night	0.43	8.65	0.48	12
Jan 15, 2025	Day	1.16	20.76	0	5

**INDIANA DEPARTMENT OF ENVIRONMENTAL MANAGEMENT
OFFICE OF AIR QUALITY**

COMPLIANCE SECTION
SO2 Emissions

Source Name: United States Mineral Products Company d.b.a. Isolatek International
 Source Address: 701 N Broadway, Huntington, IN 46750
 Mailing Address: 701 N Broadway, Huntington, IN 46750

Jan 2, 2025 TO Mar 31, 2025

Date	Shift	Wool (tons/hr)	Flyash (tons/hr)	Slag Waste (tons/hr)	Run Hours
Jan 15, 2025	Night	0	20.76	0	5
Jan 16, 2025	Day	0	103.8	0	1
Jan 16, 2025	Night	-8.27	103.8	0	1
Jan 17, 2025	Day	0	20.76	1.48	5
Jan 17, 2025	Night	9.46	20.76	0.35	5
Jan 18, 2025	Day	2.48	23.07	0	4.5
Jan 18, 2025	Night	3.95	23.07	1.75	4.5
Jan 19, 2025	Day	0	9.44	1.23	11
Jan 19, 2025	Night	1.35	9.44	1.24	11
Jan 20, 2025	Day	7.75	9.03	0.82	11.5
Jan 20, 2025	Night	-2.03	9.03	0.59	11.5
Jan 21, 2025	Day	3.74	8.71	0.7	12
Jan 21, 2025	Night	5.83	8.71	0.63	12
Jan 22, 2025	Day	2.24	8.71	0.57	12
Jan 22, 2025	Night	0.51	8.71	0.93	12
Jan 23, 2025	Day	2.82	8.71	0.83	12
Jan 23, 2025	Night	4.4	8.71	0.63	12
Jan 24, 2025	Day	2.78	8.71	0.64	12
Jan 24, 2025	Night	3.22	8.71	0.65	12
Jan 25, 2025	Day	0.48	9.09	0.72	11.5
Jan 25, 2025	Night	3.37	9.09	0.79	11.5
Jan 26, 2025	Day	3.87	9.09	0.81	11.5
Jan 26, 2025	Night	3.01	9.09	0.62	11.5
Jan 27, 2025	Day	5.36	19.32	0	5.5
Jan 27, 2025	Night	0.38	19.32	1.97	5.5
Jan 28, 2025	Day	3.09	8.86	0.74	12
Jan 28, 2025	Night	2.74	8.86	0.74	12

**INDIANA DEPARTMENT OF ENVIRONMENTAL MANAGEMENT
OFFICE OF AIR QUALITY**

COMPLIANCE SECTION
SO2 Emissions

Source Name: United States Mineral Products Company d.b.a. Isolatek International
 Source Address: 701 N Broadway, Huntington, IN 46750
 Mailing Address: 701 N Broadway, Huntington, IN 46750

Jan 2, 2025 TO Mar 31, 2025

Date	Shift	Wool (tons/hr)	Flyash (tons/hr)	Slag Waste (tons/hr)	Run Hours
Jan 29, 2025	Day	2.99	10.12	0.87	10.5
Jan 29, 2025	Night	4.25	10.12	1.24	10.5
Jan 30, 2025	Day	4.54	8.9	1.02	11.5
Jan 30, 2025	Night	4	8.9	1.44	11.5
Jan 31, 2025	Day	4.54	8.53	1.42	12
Jan 31, 2025	Night	4.16	8.53	0.48	12
Feb 1, 2025	Day	1.35	8.53	1.04	12
Feb 1, 2025	Night	4.69	8.53	1.17	12
Feb 2, 2025	Day	4.74	8.53	1.02	12
Feb 2, 2025	Night	2.52	8.53	0.68	12
Feb 3, 2025	Day	8.72	29.25	0	3.5
Feb 3, 2025	Night	-0.06	29.25	0	3.5
Feb 4, 2025	Day	0	83.24	0	1
Feb 4, 2025	Night	0	83.24	0	1
Feb 5, 2025	Day	0	83.24	0	1
Feb 5, 2025	Night	0	83.24	0	1
Feb 6, 2025	Day	0	83.24	0	1
Feb 6, 2025	Night	0	83.24	0	1
Feb 7, 2025	Day	0	83.24	0	1
Feb 7, 2025	Night	0	83.24	0	1
Feb 8, 2025	Day	0	83.24	0	1
Feb 8, 2025	Night	0	83.24	0	1
Feb 9, 2025	Day	0	83.24	0	1
Feb 9, 2025	Night	-4.81	83.24	0	1
Feb 10, 2025	Day	0	18.5	1.81	4.5
Feb 10, 2025	Night	5.12	18.5	1.35	4.5
Feb 11, 2025	Day	2.16	7.24	0.97	11.5

**INDIANA DEPARTMENT OF ENVIRONMENTAL MANAGEMENT
OFFICE OF AIR QUALITY**

COMPLIANCE SECTION
SO2 Emissions

Source Name: United States Mineral Products Company d.b.a. Isolatek International
 Source Address: 701 N Broadway, Huntington, IN 46750
 Mailing Address: 701 N Broadway, Huntington, IN 46750

Jan 2, 2025 TO Mar 31, 2025

Date	Shift	Wool (tons/hr)	Flyash (tons/hr)	Slag Waste (tons/hr)	Run Hours
Feb 11, 2025	Night	3.57	7.24	1.07	11.5
Feb 12, 2025	Day	4.15	6.94	1.25	12
Feb 12, 2025	Night	5.37	6.94	1.12	12
Feb 13, 2025	Day	4.31	6.94	0.85	12
Feb 13, 2025	Night	2.98	6.94	0.87	12
Feb 14, 2025	Day	3.06	7.24	0.88	11.5
Feb 14, 2025	Night	4.73	7.24	0.97	11.5
Feb 15, 2025	Day	3.04	7.57	0.86	11
Feb 15, 2025	Night	3.83	7.57	1.15	11
Feb 16, 2025	Day	7.34	7.57	0.9	11
Feb 16, 2025	Night	0.56	7.57	1.19	11
Feb 17, 2025	Day	4.37	7.46	0.95	12
Feb 17, 2025	Night	3.89	7.46	0.92	12
Feb 18, 2025	Day	3.66	8.14	1.12	11
Feb 18, 2025	Night	4.4	8.14	0.61	11
Feb 19, 2025	Day	8.28	19.89	0.01	4.5
Feb 19, 2025	Night	5.27	19.89	0.98	4.5
Feb 20, 2025	Day	0.79	8.01	0.59	10.5
Feb 20, 2025	Night	-0.73	8.01	1.1	10.5
Feb 21, 2025	Day	1.99	7.64	0.65	11
Feb 21, 2025	Night	3.11	7.64	0.91	11
Feb 22, 2025	Day	4.36	7.01	0.75	12
Feb 22, 2025	Night	2.88	7.01	0.7	12
Feb 23, 2025	Day	2.53	7.64	1.05	11
Feb 23, 2025	Night	3.92	7.64	0.41	11
Feb 24, 2025	Day	1.87	9.66	0.25	8.5
Feb 24, 2025	Night	0.93	9.66	1.04	8.5

**INDIANA DEPARTMENT OF ENVIRONMENTAL MANAGEMENT
OFFICE OF AIR QUALITY**

COMPLIANCE SECTION
SO₂ Emissions

Source Name: United States Mineral Products Company d.b.a. Isolatek International
Source Address: 701 N Broadway, Huntington, IN 46750
Mailing Address: 701 N Broadway, Huntington, IN 46750

Jan 2, 2025 TO Mar 31, 2025

Date	Shift	Wool (tons/hr)	Flyash (tons/hr)	Slag Waste (tons/hr)	Run Hours
Feb 25, 2025	Day	1.82	7.47	1.07	11
Feb 25, 2025	Night	4.68	7.47	0.79	11
Feb 26, 2025	Day	7.19	14.94	0	5.5
Feb 26, 2025	Night	-0.64	14.94	1.87	5.5
Feb 27, 2025	Day	3.29	7.14	0.84	11.5
Feb 27, 2025	Night	3.78	7.14	0.89	11.5
Feb 28, 2025	Day	6.06	6.85	0.67	12
Feb 28, 2025	Night	1.47	6.85	0.39	12
Mar 1, 2025	Day	1.67	6.85	0.74	12
Mar 1, 2025	Night	2.54	6.85	1.07	12
Mar 2, 2025	Day	2.95	6.85	1.18	12
Mar 2, 2025	Night	4.92	6.85	0.97	12
Mar 3, 2025	Day	4.14	7.14	0.91	11.5
Mar 3, 2025	Night	3.98	7.14	1.07	11.5
Mar 4, 2025	Day	4.31	6.85	1.09	12
Mar 4, 2025	Night	8.79	6.85	0.78	12
Mar 5, 2025	Day	1.3	14.94	0	5.5
Mar 5, 2025	Night	-0.51	14.94	1.59	5.5
Mar 6, 2025	Day	2.66	8.21	0.75	10
Mar 6, 2025	Night	5.07	8.21	1.14	10
Mar 7, 2025	Day	3.62	8.42	0.8	12
Mar 7, 2025	Night	1.56	8.42	0.8	12
Mar 8, 2025	Day	1.26	8.42	0.92	12
Mar 8, 2025	Night	4.26	8.42	0.53	12
Mar 9, 2025	Day	2.47	8.78	0.83	11.5
Mar 9, 2025	Night	3.45	8.78	0.4	11.5
Mar 10, 2025	Day	2.04	9.18	0.96	11

INDIANA DEPARTMENT OF ENVIRONMENTAL MANAGEMENT
OFFICE OF AIR QUALITY

COMPLIANCE SECTION
SO2 Emissions

Source Name: United States Mineral Products Company d.b.a. Isolatek International
Source Address: 701 N Broadway, Huntington, IN 46750
Mailing Address: 701 N Broadway, Huntington, IN 46750

Jan 2, 2025 TO Mar 31, 2025

Date	Shift	Wool (tons/hr)	Flyash (tons/hr)	Slag Waste (tons/hr)	Run Hours
Mar 10, 2025	Night	3.58	9.18	0.66	11
Mar 11, 2025	Day	2.85	8.42	0.74	12
Mar 11, 2025	Night	2.21	8.42	0.66	12
Mar 12, 2025	Day	5.25	15.54	0.25	6.5
Mar 12, 2025	Night	1.4	15.54	2.29	6.5
Mar 13, 2025	Day	5.51	8.42	1.15	12
Mar 13, 2025	Night	3.01	8.42	0.98	12
Mar 14, 2025	Day	2.61	11.35	0.85	12
Mar 14, 2025	Night	5.09	11.35	1.14	12
Mar 15, 2025	Day	1.34	12.39	0.51	11
Mar 15, 2025	Night	2.32	12.39	0.43	11
Mar 16, 2025	Day	2.01	16.03	1.12	8.5
Mar 16, 2025	Night	5.98	16.03	1.03	8.5
Mar 17, 2025	Day	2.94	12.98	0.58	10.5
Mar 17, 2025	Night	2.4	12.98	1.14	10.5
Mar 18, 2025	Day	4.16	11.35	0.95	12
Mar 18, 2025	Night	5.83	11.35	1.02	12
Mar 19, 2025	Day	12.82	27.25	0	5
Mar 19, 2025	Night	4.71	27.25	3.55	5
Mar 20, 2025	Day	4.61	15.12	1.6	11.5
Mar 20, 2025	Night	5.01	15.12	1.29	11.5
Mar 21, 2025	Day	1.12	14.49	1.39	12
Mar 21, 2025	Night	5.22	14.49	1.05	12
Mar 22, 2025	Day	6.82	18.31	0.8	9.5
Mar 22, 2025	Night	2.85	18.31	1.26	9.5
Mar 23, 2025	Day	2.46	16.57	0.93	10.5
Mar 23, 2025	Night	3.99	16.57	1.59	10.5

**INDIANA DEPARTMENT OF ENVIRONMENTAL MANAGEMENT
OFFICE OF AIR QUALITY**

COMPLIANCE SECTION
SO2 Emissions

Source Name: United States Mineral Products Company d.b.a. Isolatek International
Source Address: 701 N Broadway, Huntington, IN 46750
Mailing Address: 701 N Broadway, Huntington, IN 46750

Jan 2, 2025 TO Mar 31, 2025

Date	Shift	Wool (tons/hr)	Flyash (tons/hr)	Slag Waste (tons/hr)	Run Hours
Mar 24, 2025	Day	5.75	25.58	1.01	10.5
Mar 24, 2025	Night	-0.07	25.58	1.53	10.5
Mar 25, 2025	Day	4.88	24.42	1.59	11
Mar 25, 2025	Night	5.6	24.42	1.17	11
Mar 26, 2025	Day	9.84	48.83	0.07	5.5
Mar 26, 2025	Night	3.75	48.83	3.15	5.5
Mar 27, 2025	Day	6	0	1.43	12
Mar 27, 2025	Night	3.17	0	1.34	12
Mar 28, 2025	Day	3.48	0	0.76	11
Mar 28, 2025	Night	1.64	0	0.04	11
Mar 29, 2025	Day	0	0	1.33	3
Mar 29, 2025	Night	9.67	0	5.23	3
Mar 30, 2025	Day	5.38	0	1.24	12
Mar 30, 2025	Night	5.2	0	1.23	12
Mar 31, 2025	Day	4.99	0	1.28	12
Mar 31, 2025	Night	7.36	0	0.55	12

**INDIANA DEPARTMENT OF ENVIRONMENTAL MANAGEMENT
OFFICE OF AIR QUALITY**

COMPLIANCE SECTION
SO₂ Emissions

Source Name: United States Mineral Products Company d.b.a. Isolatek International
Source Address: 701 N Broadway, Huntington, IN 46750
Mailing Address: 701 N Broadway, Huntington, IN 46750

Jan 2, 2025 TO Mar 31, 2025

Date	Shift	Wool (tons/hr)	Flyash (tons/hr)	Slag Waste (tons/hr)	Run Hours
Jan 2, 2025	Day	0	23.21	0.72	4.5
Jan 2, 2025	Night	2.34	23.21	2.63	4.5
Jan 3, 2025	Day	3.64	8.7	0.87	12
Jan 3, 2025	Night	3.25	8.7	1.01	12
Jan 4, 2025	Day	2.75	8.7	1.03	12
Jan 4, 2025	Night	5.17	8.7	1.09	12
Jan 5, 2025	Day	0.68	9.5	0.95	11
Jan 5, 2025	Night	4.52	9.5	1.13	11
Jan 6, 2025	Day	4.45	8.7	0.95	12
Jan 6, 2025	Night	3.87	8.7	1.04	12
Jan 7, 2025	Day	4.4	8.7	1.26	12
Jan 7, 2025	Night	6.07	8.7	0.68	12
Jan 8, 2025	Day	7.55	26.11	0	4
Jan 8, 2025	Night	0.02	26.11	3.49	4
Jan 9, 2025	Day	4.29	9.65	1.65	11
Jan 9, 2025	Night	5.74	9.65	1.39	11
Jan 10, 2025	Day	6.31	9.28	1.48	11
Jan 10, 2025	Night	6.53	9.28	1.3	11
Jan 11, 2025	Day	5.68	8.51	1.06	12
Jan 11, 2025	Night	0.46	8.51	1.02	12
Jan 12, 2025	Day	3.8	8.51	0.73	12
Jan 12, 2025	Night	3.62	8.51	0.75	12
Jan 13, 2025	Day	1.7	8.51	0.91	12
Jan 13, 2025	Night	4.82	8.51	0.98	12
Jan 14, 2025	Day	5.91	8.65	0.84	12
Jan 14, 2025	Night	0.43	8.65	0.48	12
Jan 15, 2025	Day	1.16	20.76	0	5

**INDIANA DEPARTMENT OF ENVIRONMENTAL MANAGEMENT
OFFICE OF AIR QUALITY**

COMPLIANCE SECTION
SO2 Emissions

Source Name: United States Mineral Products Company d.b.a. Isolatek International
 Source Address: 701 N Broadway, Huntington, IN 46750
 Mailing Address: 701 N Broadway, Huntington, IN 46750

Jan 2, 2025 TO Mar 31, 2025

Date	Shift	Wool (tons/hr)	Flyash (tons/hr)	Slag Waste (tons/hr)	Run Hours
Jan 15, 2025	Night	0	20.76	0	5
Jan 16, 2025	Day	0	103.8	0	1
Jan 16, 2025	Night	-8.27	103.8	0	1
Jan 17, 2025	Day	0	20.76	1.48	5
Jan 17, 2025	Night	9.46	20.76	0.35	5
Jan 18, 2025	Day	2.48	23.07	0	4.5
Jan 18, 2025	Night	3.95	23.07	1.75	4.5
Jan 19, 2025	Day	0	9.44	1.23	11
Jan 19, 2025	Night	1.35	9.44	1.24	11
Jan 20, 2025	Day	7.75	9.03	0.82	11.5
Jan 20, 2025	Night	-2.03	9.03	0.59	11.5
Jan 21, 2025	Day	3.74	8.71	0.7	12
Jan 21, 2025	Night	5.83	8.71	0.63	12
Jan 22, 2025	Day	2.24	8.71	0.57	12
Jan 22, 2025	Night	0.51	8.71	0.93	12
Jan 23, 2025	Day	2.82	8.71	0.83	12
Jan 23, 2025	Night	4.4	8.71	0.63	12
Jan 24, 2025	Day	2.78	8.71	0.64	12
Jan 24, 2025	Night	3.22	8.71	0.65	12
Jan 25, 2025	Day	0.48	9.09	0.72	11.5
Jan 25, 2025	Night	3.37	9.09	0.79	11.5
Jan 26, 2025	Day	3.87	9.09	0.81	11.5
Jan 26, 2025	Night	3.01	9.09	0.62	11.5
Jan 27, 2025	Day	5.36	19.32	0	5.5
Jan 27, 2025	Night	0.38	19.32	1.97	5.5
Jan 28, 2025	Day	3.09	8.86	0.74	12
Jan 28, 2025	Night	2.74	8.86	0.74	12

**INDIANA DEPARTMENT OF ENVIRONMENTAL MANAGEMENT
OFFICE OF AIR QUALITY**

COMPLIANCE SECTION
SO2 Emissions

Source Name: United States Mineral Products Company d.b.a. Isolatek International
 Source Address: 701 N Broadway, Huntington, IN 46750
 Mailing Address: 701 N Broadway, Huntington, IN 46750

Jan 2, 2025 TO Mar 31, 2025

Date	Shift	Wool (tons/hr)	Flyash (tons/hr)	Slag Waste (tons/hr)	Run Hours
Jan 29, 2025	Day	2.99	10.12	0.87	10.5
Jan 29, 2025	Night	4.25	10.12	1.24	10.5
Jan 30, 2025	Day	4.54	8.9	1.02	11.5
Jan 30, 2025	Night	4	8.9	1.44	11.5
Jan 31, 2025	Day	4.54	8.53	1.42	12
Jan 31, 2025	Night	4.16	8.53	0.48	12
Feb 1, 2025	Day	1.35	8.53	1.04	12
Feb 1, 2025	Night	4.69	8.53	1.17	12
Feb 2, 2025	Day	4.74	8.53	1.02	12
Feb 2, 2025	Night	2.52	8.53	0.68	12
Feb 3, 2025	Day	8.72	29.25	0	3.5
Feb 3, 2025	Night	-0.06	29.25	0	3.5
Feb 4, 2025	Day	0	83.24	0	1
Feb 4, 2025	Night	0	83.24	0	1
Feb 5, 2025	Day	0	83.24	0	1
Feb 5, 2025	Night	0	83.24	0	1
Feb 6, 2025	Day	0	83.24	0	1
Feb 6, 2025	Night	0	83.24	0	1
Feb 7, 2025	Day	0	83.24	0	1
Feb 7, 2025	Night	0	83.24	0	1
Feb 8, 2025	Day	0	83.24	0	1
Feb 8, 2025	Night	0	83.24	0	1
Feb 9, 2025	Day	0	83.24	0	1
Feb 9, 2025	Night	-4.81	83.24	0	1
Feb 10, 2025	Day	0	18.5	1.81	4.5
Feb 10, 2025	Night	5.12	18.5	1.35	4.5
Feb 11, 2025	Day	2.16	7.24	0.97	11.5

**INDIANA DEPARTMENT OF ENVIRONMENTAL MANAGEMENT
OFFICE OF AIR QUALITY**

COMPLIANCE SECTION
SO2 Emissions

Source Name: United States Mineral Products Company d.b.a. Isolatek International
 Source Address: 701 N Broadway, Huntington, IN 46750
 Mailing Address: 701 N Broadway, Huntington, IN 46750

Jan 2, 2025 TO Mar 31, 2025

Date	Shift	Wool (tons/hr)	Flyash (tons/hr)	Slag Waste (tons/hr)	Run Hours
Feb 11, 2025	Night	3.57	7.24	1.07	11.5
Feb 12, 2025	Day	4.15	6.94	1.25	12
Feb 12, 2025	Night	5.37	6.94	1.12	12
Feb 13, 2025	Day	4.31	6.94	0.85	12
Feb 13, 2025	Night	2.98	6.94	0.87	12
Feb 14, 2025	Day	3.06	7.24	0.88	11.5
Feb 14, 2025	Night	4.73	7.24	0.97	11.5
Feb 15, 2025	Day	3.04	7.57	0.86	11
Feb 15, 2025	Night	3.83	7.57	1.15	11
Feb 16, 2025	Day	7.34	7.57	0.9	11
Feb 16, 2025	Night	0.56	7.57	1.19	11
Feb 17, 2025	Day	4.37	7.46	0.95	12
Feb 17, 2025	Night	3.89	7.46	0.92	12
Feb 18, 2025	Day	3.66	8.14	1.12	11
Feb 18, 2025	Night	4.4	8.14	0.61	11
Feb 19, 2025	Day	8.28	19.89	0.01	4.5
Feb 19, 2025	Night	5.27	19.89	0.98	4.5
Feb 20, 2025	Day	0.79	8.01	0.59	10.5
Feb 20, 2025	Night	-0.73	8.01	1.1	10.5
Feb 21, 2025	Day	1.99	7.64	0.65	11
Feb 21, 2025	Night	3.11	7.64	0.91	11
Feb 22, 2025	Day	4.36	7.01	0.75	12
Feb 22, 2025	Night	2.88	7.01	0.7	12
Feb 23, 2025	Day	2.53	7.64	1.05	11
Feb 23, 2025	Night	3.92	7.64	0.41	11
Feb 24, 2025	Day	1.87	9.66	0.25	8.5
Feb 24, 2025	Night	0.93	9.66	1.04	8.5

INDIANA DEPARTMENT OF ENVIRONMENTAL MANAGEMENT
OFFICE OF AIR QUALITY

COMPLIANCE SECTION
SO2 Emissions

Source Name: United States Mineral Products Company d.b.a. Isolotek International
Source Address: 701 N Broadway, Huntington, IN 46750
Mailing Address: 701 N Broadway, Huntington, IN 46750

Jan 2, 2025 TO Mar 31, 2025

Date	Shift	Wool (tons/hr)	Flyash (tons/hr)	Slag Waste (tons/hr)	Run Hours
Feb 25, 2025	Day	1.82	7.47	1.07	11
Feb 25, 2025	Night	4.68	7.47	0.79	11
Feb 26, 2025	Day	7.19	14.94	0	5.5
Feb 26, 2025	Night	-0.64	14.94	1.87	5.5
Feb 27, 2025	Day	3.29	7.14	0.84	11.5
Feb 27, 2025	Night	3.78	7.14	0.89	11.5
Feb 28, 2025	Day	6.06	6.85	0.67	12
Feb 28, 2025	Night	1.47	6.85	0.39	12
Mar 1, 2025	Day	1.67	6.85	0.74	12
Mar 1, 2025	Night	2.54	6.85	1.07	12
Mar 2, 2025	Day	2.95	6.85	1.18	12
Mar 2, 2025	Night	4.92	6.85	0.97	12
Mar 3, 2025	Day	4.14	7.14	0.91	11.5
Mar 3, 2025	Night	3.98	7.14	1.07	11.5
Mar 4, 2025	Day	4.31	6.85	1.09	12
Mar 4, 2025	Night	8.79	6.85	0.78	12
Mar 5, 2025	Day	1.3	14.94	0	5.5
Mar 5, 2025	Night	-0.51	14.94	1.59	5.5
Mar 6, 2025	Day	2.66	8.21	0.75	10
Mar 6, 2025	Night	5.07	8.21	1.14	10
Mar 7, 2025	Day	3.62	8.42	0.8	12
Mar 7, 2025	Night	1.56	8.42	0.8	12
Mar 8, 2025	Day	1.26	8.42	0.92	12
Mar 8, 2025	Night	4.26	8.42	0.53	12
Mar 9, 2025	Day	2.47	8.78	0.83	11.5
Mar 9, 2025	Night	3.45	8.78	0.4	11.5
Mar 10, 2025	Day	2.04	9.18	0.96	11

INDIANA DEPARTMENT OF ENVIRONMENTAL MANAGEMENT
OFFICE OF AIR QUALITY

COMPLIANCE SECTION
SO2 Emissions

Source Name: United States Mineral Products Company d.b.a. Isolatek International
Source Address: 701 N Broadway, Huntington, IN 46750
Mailing Address: 701 N Broadway, Huntington, IN 46750

Jan 2, 2025 TO Mar 31, 2025

Date	Shift	Wool (tons/hr)	Flyash (tons/hr)	Slag Waste (tons/hr)	Run Hours
Mar 10, 2025	Night	3.58	9.18	0.66	11
Mar 11, 2025	Day	2.85	8.42	0.74	12
Mar 11, 2025	Night	2.21	8.42	0.66	12
Mar 12, 2025	Day	5.25	15.54	0.25	6.5
Mar 12, 2025	Night	1.4	15.54	2.29	6.5
Mar 13, 2025	Day	5.51	8.42	1.15	12
Mar 13, 2025	Night	3.01	8.42	0.98	12
Mar 14, 2025	Day	2.61	11.35	0.85	12
Mar 14, 2025	Night	5.09	11.35	1.14	12
Mar 15, 2025	Day	1.34	12.39	0.51	11
Mar 15, 2025	Night	2.32	12.39	0.43	11
Mar 16, 2025	Day	2.01	16.03	1.12	8.5
Mar 16, 2025	Night	5.98	16.03	1.03	8.5
Mar 17, 2025	Day	2.94	12.98	0.58	10.5
Mar 17, 2025	Night	2.4	12.98	1.14	10.5
Mar 18, 2025	Day	4.16	11.35	0.95	12
Mar 18, 2025	Night	5.83	11.35	1.02	12
Mar 19, 2025	Day	12.82	27.25	0	5
Mar 19, 2025	Night	4.71	27.25	3.55	5
Mar 20, 2025	Day	4.61	15.12	1.6	11.5
Mar 20, 2025	Night	5.01	15.12	1.29	11.5
Mar 21, 2025	Day	1.12	14.49	1.39	12
Mar 21, 2025	Night	5.22	14.49	1.05	12
Mar 22, 2025	Day	6.82	18.31	0.8	9.5
Mar 22, 2025	Night	2.85	18.31	1.26	9.5
Mar 23, 2025	Day	2.46	16.57	0.93	10.5
Mar 23, 2025	Night	3.99	16.57	1.59	10.5

**INDIANA DEPARTMENT OF ENVIRONMENTAL MANAGEMENT
OFFICE OF AIR QUALITY**

COMPLIANCE SECTION
SO₂ Emissions

Source Name: United States Mineral Products Company d.b.a. Isolatek International
Source Address: 701 N Broadway, Huntington, IN 46750
Mailing Address: 701 N Broadway, Huntington, IN 46750

Jan 2, 2025 TO Mar 31, 2025

Date	Shift	Wool (tons/hr)	Flyash (tons/hr)	Slag Waste (tons/hr)	Run Hours
Mar 24, 2025	Day	5.75	25.58	1.01	10.5
Mar 24, 2025	Night	-0.07	25.58	1.53	10.5
Mar 25, 2025	Day	4.88	24.42	1.59	11
Mar 25, 2025	Night	5.6	24.42	1.17	11
Mar 26, 2025	Day	9.84	48.83	0.07	5.5
Mar 26, 2025	Night	3.75	48.83	3.15	5.5
Mar 27, 2025	Day	6	0	1.43	12
Mar 27, 2025	Night	3.17	0	1.34	12
Mar 28, 2025	Day	3.48	0	0.76	11
Mar 28, 2025	Night	1.64	0	0.04	11
Mar 29, 2025	Day	0	0	1.33	3
Mar 29, 2025	Night	9.67	0	5.23	3
Mar 30, 2025	Day	5.38	0	1.24	12
Mar 30, 2025	Night	5.2	0	1.23	12
Mar 31, 2025	Day	4.99	0	1.28	12
Mar 31, 2025	Night	7.36	0	0.55	12

**INDIANA DEPARTMENT OF ENVIRONMENTAL MANAGEMENT
OFFICE OF AIR QUALITY**

COMPLIANCE SECTION
SO₂ Emissions

Source Name: United States Mineral Products Company d.b.a. Isolotek International
 Source Address: 701 N Broadway, Huntington, IN 46750
 Mailing Address: 701 N Broadway, Huntington, IN 46750

Jan 1, 2025 TO Mar 31, 2025

Month	Emission Factor Stack #1 (lb SO2/ton)	Emission Factor Stack #3 (lb SO2/ton)	Material Input (tons/Month)	Hours of Operation (hrs)	Average Hourly SO2 Stack #1 (lb/hr)	Hourly SO2 Stack #1 Limit (lb/hr)	Average Hourly SO2 Stack #3 (lb/hr)	Hourly SO2 Stack #3 Limit (lb/hr)
Jan	13.8	0.07	3578.28	581	94.44	160	0.48	20
Feb	13.8	0.07	2589.48	405	98.3	160	0.5	20
Mar	13.8	0.07	4272.57	606	107.51	160	0.55	20

Emission Factor = Stack Test Result

Stack #1 = Cupolas

Stack #3 = Screen Houses

This page intentionally left blank.



July 21^h , 2025

Indiana Department of Environmental Management
Office of Air Quality
Mail Code: 61-50 IGCN 1003
100 N. Senate Ave.
Indianapolis, Indiana 46204-2251

IN THE MATTER OF:
ORDER OF THE COMMISSIONER
PURSUANT TO IC 13-14-2-1
FOR U.S. MINERAL PRODUCTS COMPANY
(D/B/A ISOLATEK INTERNATIONAL)

Re: Quarterly Compliance Report – April 1st - June 30th 2025
United States Mineral Products Company d.b.a. Isolatek International
Permit No. 069-38295-00021
ID No. 069-00021

Notice and Order of the Commissioner of the Department of Environmental Management dated February 12, 2024. The reporting period commenced on the first day of April and concluded on June 30th 2025. SO₂ emissions calculated pursuant to the order for stack #1 (baghouse) which includes emissions from both Cupola Furnaces is a daily average of 119.23 lbs/hr. & Stack #3 (screen house stack from both screenhouses) a daily average of .603 lbs/hr. Total material throughput during this time frame was 13,175.81 tons for the quarter. Please note the SO₂ emission factor used for the entirety of this reporting period is based upon the stack test conducted April 16, 2024. This emission factor will be used as well in future reports until a subsequent formal stack test is performed.

The compliance reports are as follows:

- A report of the monthly average hourly SO₂ emissions in pounds per hour from cupulas EU #1 and EU #2.
- A report of the monthly average hourly SO₂ emissions in pounds per hour from blow chambers EU #3 and EU #4.
- A report of throughput of all input materials (coke, slag, and other feed material (e.g., feldspar)) in pounds per hour for each cupula (EU #1 and EU #2) for each 12-hour shift.
- A report of throughput of output materials (mineral wool fiber, fly ash and slag waste) for a defined reported time period as shown in the report.

A handwritten signature in black ink, followed by the date "July 21st 2025" written in black ink.

Respectfully Submitted,
Jason Trent
Regional Operations Manager-
Isolatek International

**INDIANA DEPARTMENT OF ENVIRONMENTAL MANAGEMENT
OFFICE OF AIR QUALITY**

COMPLIANCE SECTION
SO₂ Emissions

Source Name: United States Mineral Products Company d.b.a. Isolatek International
Source Address: 701 N Broadway, Huntington, IN 46750
Mailing Address: 701 N Broadway, Huntington, IN 46750

Apr 1, 2025 TO Jun 30, 2025

Date	Shift	Wool (tons/hr)	Flyash (tons/hr)	Slag Waste (tons/hr)	Run Hours
Apr 1, 2025	Day	0.01	10.69	1.33	11.5
Apr 1, 2025	Night	5.17	10.69	1.13	11.5
Apr 2, 2025	Day	9.92	27.09	0	4.5
Apr 2, 2025	Night	-2.23	27.09	0.91	4.5
Apr 3, 2025	Day	0.95	14.3	1.84	8.5
Apr 3, 2025	Night	5.85	14.3	1.99	8.5
Apr 4, 2025	Day	5.11	10.13	1.37	12
Apr 4, 2025	Night	6.49	10.13	1.39	12
Apr 5, 2025	Day	4.97	10.15	0.94	12
Apr 5, 2025	Night	14.26	10.15	1.28	12
Apr 6, 2025	Day	1.16	10.16	1.39	12
Apr 6, 2025	Night	2.41	10.16	1.52	12
Apr 7, 2025	Day	0.45	10.63	1.5	11.5
Apr 7, 2025	Night	3.41	10.63	1.08	11.5
Apr 8, 2025	Day	2.77	10.19	0.73	12
Apr 8, 2025	Night	1.8	10.19	0.7	12
Apr 9, 2025	Day	10.89	22.08	0.03	5.5
Apr 9, 2025	Night	3.81	22.08	1.36	5.5
Apr 10, 2025	Day	0.68	12.16	1.35	10
Apr 10, 2025	Night	1.25	12.16	1.96	10
Apr 11, 2025	Day	-3.2	10.13	1.56	12
Apr 11, 2025	Night	-12.3	10.13	1.57	12
Apr 12, 2025	Day	-12.07	10.15	1.56	12
Apr 12, 2025	Night	-10.79	10.15	1.28	12
Apr 13, 2025	Day	-83.7	10.17	1.12	12
Apr 13, 2025	Night	-46.61	10.17	1.35	12
Apr 14, 2025	Day	-54.91	10.64	1.47	11.5

**INDIANA DEPARTMENT OF ENVIRONMENTAL MANAGEMENT
OFFICE OF AIR QUALITY**

COMPLIANCE SECTION
SO2 Emissions

Source Name: United States Mineral Products Company d.b.a. Isolatek International
 Source Address: 701 N Broadway, Huntington, IN 46750
 Mailing Address: 701 N Broadway, Huntington, IN 46750

Apr 1, 2025 TO Jun 30, 2025

Date	Shift	Wool (tons/hr)	Flyash (tons/hr)	Slag Waste (tons/hr)	Run Hours
Apr 14, 2025	Night	-65.33	10.64	1.24	11.5
Apr 15, 2025	Day	-38.47	11.66	0.81	10.5
Apr 15, 2025	Night	-40.11	11.66	0.87	10.5
Apr 16, 2025	Day	-37.15	11.13	0.92	11
Apr 16, 2025	Night	-42.96	11.13	0.87	11
Apr 17, 2025	Day	-39.4	10.39	0.82	12
Apr 17, 2025	Night	-42.57	10.39	0.48	12
Apr 18, 2025	Day	-301.94	31.16	0	4
Apr 18, 2025	Night	0	31.16	0	4
Apr 19, 2025	Day	0	124.64	0	1
Apr 19, 2025	Night	0	124.64	0	1
Apr 20, 2025	Day	0	124.64	0	1
Apr 20, 2025	Night	-0.7	124.64	0	1
Apr 21, 2025	Day	0	27.62	1.83	4.5
Apr 21, 2025	Night	-2.82	27.62	3.03	4.5
Apr 22, 2025	Day	5.01	10.39	0.95	12
Apr 22, 2025	Night	-0.85	10.39	0.83	12
Apr 23, 2025	Day	5.38	10.89	0.92	11.5
Apr 23, 2025	Night	2.4	10.89	0.59	11.5
Apr 24, 2025	Day	2.39	13.89	1.18	9
Apr 24, 2025	Night	5.74	13.89	1.78	9
Apr 25, 2025	Day	3.49	10.93	1.36	11.5
Apr 25, 2025	Night	5.94	10.93	1.4	11.5
Apr 26, 2025	Day	5.41	10.96	1.08	11.5
Apr 26, 2025	Night	1.58	10.96	1.39	11.5
Apr 27, 2025	Day	2.03	11.01	0.98	11.5
Apr 27, 2025	Night	2.94	11.01	1.08	11.5

**INDIANA DEPARTMENT OF ENVIRONMENTAL MANAGEMENT
OFFICE OF AIR QUALITY**

COMPLIANCE SECTION
SO2 Emissions

Source Name: United States Mineral Products Company d.b.a. Isolatek International
 Source Address: 701 N Broadway, Huntington, IN 46750
 Mailing Address: 701 N Broadway, Huntington, IN 46750

Apr 1, 2025 TO Jun 30, 2025

Date	Shift	Wool (tons/hr)	Flyash (tons/hr)	Slag Waste (tons/hr)	Run Hours
Apr 28, 2025	Day	6.85	10.6	1.3	12
Apr 28, 2025	Night	2.24	10.6	1.37	12
Apr 29, 2025	Day	4.66	10.62	1.34	12
Apr 29, 2025	Night	4.16	10.62	0.97	12
Apr 30, 2025	Day	4.53	25.25	0	5
Apr 30, 2025	Night	1.93	25.25	1.46	5
May 1, 2025	Day	2.56	12.62	1.57	10
May 1, 2025	Night	2	12.62	1.59	10
May 2, 2025	Day	2.95	11.02	1.01	11.5
May 2, 2025	Night	1.86	11.02	1.11	11.5
May 3, 2025	Day	5.94	10.6	0.84	12
May 3, 2025	Night	5.46	10.6	0.64	12
May 4, 2025	Day	12.67	27.97	0.12	4.5
May 4, 2025	Night	-3.79	27.97	2.66	4.5
May 5, 2025	Day	5.86	11.4	1.06	11
May 5, 2025	Night	7.12	11.4	0.9	11
May 6, 2025	Day	5.07	11.96	1.34	10.5
May 6, 2025	Night	1.54	11.96	1.09	10.5
May 7, 2025	Day	8.63	24.98	0	5
May 7, 2025	Night	6.2	24.98	1.78	5
May 8, 2025	Day	3.23	17.81	1.29	7
May 8, 2025	Night	6.69	17.81	2.81	7
May 9, 2025	Day	0.62	10.87	1.66	11.5
May 9, 2025	Night	5.16	10.87	1.68	11.5
May 10, 2025	Day	4.9	10.47	1.47	12
May 10, 2025	Night	4.51	10.47	1.31	12
May 11, 2025	Day	4.98	10.51	1.48	12

**INDIANA DEPARTMENT OF ENVIRONMENTAL MANAGEMENT
OFFICE OF AIR QUALITY**

COMPLIANCE SECTION
SO2 Emissions

Source Name: United States Mineral Products Company d.b.a. Isolatek International
Source Address: 701 N Broadway, Huntington, IN 46750
Mailing Address: 701 N Broadway, Huntington, IN 46750

Apr 1, 2025 TO Jun 30, 2025

Date	Shift	Wool (tons/hr)	Flyash (tons/hr)	Slag Waste (tons/hr)	Run Hours
May 11, 2025	Night	6.58	10.51	1.23	12
May 12, 2025	Day	5.46	10.58	1.38	12
May 12, 2025	Night	6.44	10.58	0.89	12
May 13, 2025	Day	2.45	12.73	1.71	10
May 13, 2025	Night	3.66	12.73	0.51	10
May 14, 2025	Day	3.75	28.11	0	4.5
May 14, 2025	Night	2.11	28.11	1.73	4.5
May 15, 2025	Day	1.6	11.59	1.18	11
May 15, 2025	Night	2.99	11.59	1.36	11
May 16, 2025	Day	5.68	10.67	1.37	12
May 16, 2025	Night	8.69	10.67	1.09	12
May 17, 2025	Day	6.27	11.68	1.61	11
May 17, 2025	Night	9.31	11.68	1.69	11
May 18, 2025	Day	6.96	10.74	1.39	12
May 18, 2025	Night	7.7	10.74	1.09	12
May 19, 2025	Day	5.78	10.77	1.49	12
May 19, 2025	Night	6.64	10.77	1.36	12
May 20, 2025	Day	0.31	11.26	1.28	11.5
May 20, 2025	Night	5.77	11.26	0.91	11.5
May 21, 2025	Day	11.22	25.74	0.07	5
May 21, 2025	Night	0.2	25.74	1.63	5
May 22, 2025	Day	6.36	11.73	1.03	11
May 22, 2025	Night	6.92	11.73	1.44	11
May 23, 2025	Day	6.5	10.78	1.57	12
May 23, 2025	Night	10.87	10.78	1.5	12
May 24, 2025	Day	2.86	11.76	1.05	11
May 24, 2025	Night	5.5	11.76	1.26	11

**INDIANA DEPARTMENT OF ENVIRONMENTAL MANAGEMENT
OFFICE OF AIR QUALITY**

COMPLIANCE SECTION
SO2 Emissions

Source Name: United States Mineral Products Company d.b.a. Isolatek International
 Source Address: 701 N Broadway, Huntington, IN 46750
 Mailing Address: 701 N Broadway, Huntington, IN 46750

Apr 1, 2025 TO Jun 30, 2025

Date	Shift	Wool (tons/hr)	Flyash (tons/hr)	Slag Waste (tons/hr)	Run Hours
May 25, 2025	Day	6.46	11.28	1.4	11.5
May 25, 2025	Night	6.49	11.28	0.61	11.5
May 26, 2025	Day	17.99	43.24	0	3
May 26, 2025	Night	0	43.24	0	3
May 27, 2025	Day	0	129.73	0	1
May 27, 2025	Night	4.2	129.73	0	1
May 28, 2025	Day	0	127.3	0	1
May 28, 2025	Night	-2.96	127.3	9.35	1
May 29, 2025	Day	3.53	11.58	1.22	11
May 29, 2025	Night	9.76	11.58	1.42	11
May 30, 2025	Day	5.17	10.64	1.13	12
May 30, 2025	Night	10.12	10.64	1.32	12
May 31, 2025	Day	8.05	11.12	1.46	11.5
May 31, 2025	Night	6.06	11.12	0.71	11.5
Jun 1, 2025	Day	6.57	10.69	1.45	12
Jun 1, 2025	Night	9.75	10.69	1.41	12
Jun 2, 2025	Day	7.66	10.71	1.51	12
Jun 2, 2025	Night	1.43	10.71	0.66	12
Jun 3, 2025	Day	4.59	12.22	0.71	10.5
Jun 3, 2025	Night	5.6	12.22	0.79	10.5
Jun 4, 2025	Day	11.69	22.85	0.07	5.5
Jun 4, 2025	Night	-3.35	22.85	2.25	5.5
Jun 5, 2025	Day	9.44	11.42	0.81	11
Jun 5, 2025	Night	2.86	11.42	1.29	11
Jun 6, 2025	Day	6.64	11.4	1.17	11
Jun 6, 2025	Night	4.3	11.4	1.24	11
Jun 7, 2025	Day	7.53	10.47	1.17	12

INDIANA DEPARTMENT OF ENVIRONMENTAL MANAGEMENT
OFFICE OF AIR QUALITY

COMPLIANCE SECTION
SO₂ Emissions

Source Name: United States Mineral Products Company d.b.a. Isolatek International
Source Address: 701 N Broadway, Huntington, IN 46750
Mailing Address: 701 N Broadway, Huntington, IN 46750

Apr 1, 2025 TO Jun 30, 2025

Date	Shift	Wool (tons/hr)	Flyash (tons/hr)	Slag Waste (tons/hr)	Run Hours
Jun 7, 2025	Night	7.88	10.47	1.06	12
Jun 8, 2025	Day	9.66	10.54	1.14	12
Jun 8, 2025	Night	6.15	10.54	1.17	12
Jun 9, 2025	Day	7.65	11.04	1.24	11.5
Jun 9, 2025	Night	8.36	11.04	1.22	11.5
Jun 10, 2025	Day	7.72	10.6	1.37	12
Jun 10, 2025	Night	8.68	10.6	0.92	12
Jun 11, 2025	Day	15.23	25.05	0	5
Jun 11, 2025	Night	3.12	25.05	1.75	5
Jun 12, 2025	Day	4.52	11.91	1.58	10.5
Jun 12, 2025	Night	11.13	11.91	1.23	10.5
Jun 13, 2025	Day	4.12	10.47	1.25	12
Jun 13, 2025	Night	5.95	10.47	1.31	12
Jun 14, 2025	Day	7.86	10.54	1.42	12
Jun 14, 2025	Night	8.31	10.54	1.2	12
Jun 15, 2025	Day	7.2	11.03	1.52	11.5
Jun 15, 2025	Night	7.24	11.03	1.12	11.5
Jun 16, 2025	Day	6.97	11.56	1.14	11
Jun 16, 2025	Night	9.11	11.56	0.97	11
Jun 17, 2025	Day	10.27	11.11	1.23	11.5
Jun 17, 2025	Night	3.15	11.11	1.13	11.5
Jun 18, 2025	Day	10.24	25.55	0	5
Jun 18, 2025	Night	0	25.55	0	5
Jun 19, 2025	Day	0.01	31.94	0	4
Jun 19, 2025	Night	2.5	31.94	0	4
Jun 20, 2025	Day	0	30.1	2.39	4.5
Jun 20, 2025	Night	18.48	30.1	3.23	4.5

**INDIANA DEPARTMENT OF ENVIRONMENTAL MANAGEMENT
OFFICE OF AIR QUALITY**

COMPLIANCE SECTION
SO2 Emissions

Source Name: United States Mineral Products Company d.b.a. Isolatek International
Source Address: 701 N Broadway, Huntington, IN 46750
Mailing Address: 701 N Broadway, Huntington, IN 46750

Apr 1, 2025 TO Jun 30, 2025

Date	Shift	Wool (tons/hr)	Flyash (tons/hr)	Slag Waste (tons/hr)	Run Hours
Jun 21, 2025	Day	6.31	12.03	1.15	11.5
Jun 21, 2025	Night	6.1	12.03	1.31	11.5
Jun 22, 2025	Day	6.2	13.36	0.8	10.5
Jun 22, 2025	Night	5.38	13.36	0.77	10.5
Jun 23, 2025	Day	5.43	13.44	0.5	10.5
Jun 23, 2025	Night	5.63	13.44	0.74	10.5
Jun 24, 2025	Day	1.6	13.07	0.74	11.5
Jun 24, 2025	Night	0.75	13.07	0.62	11.5
Jun 25, 2025	Day	7.33	28.97	0	5
Jun 25, 2025	Night	1.8	28.97	1.07	5
Jun 26, 2025	Day	3.93	14.44	1.08	10.5
Jun 26, 2025	Night	6.47	14.44	1.09	10.5
Jun 27, 2025	Day	9	15.08	1.05	10.5
Jun 27, 2025	Night	5.81	15.08	1.41	10.5
Jun 28, 2025	Day	6.95	16.32	1.49	12
Jun 28, 2025	Night	3.73	16.32	1.06	12
Jun 29, 2025	Day	6.14	208.33	0.81	12
Jun 29, 2025	Night	5.65	208.33	0.79	12
Jun 30, 2025	Day	6.13	0	1	12
Jun 30, 2025	Night	5.73	0	0.64	12

**INDIANA DEPARTMENT OF ENVIRONMENTAL MANAGEMENT
OFFICE OF AIR QUALITY**

COMPLIANCE SECTION
SO₂ Emissions

Source Name: United States Mineral Products Company d.b.a. Isolatek International
Source Address: 701 N Broadway, Huntington, IN 46750
Mailing Address: 701 N Broadway, Huntington, IN 46750

Apr 1, 2025 TO Jun 30, 2025

Date	Shift	Cupola	Coke (lbs/hr)	Slag (lbs/hr)	Feldspar (lbs/hr)	Other (lbs/hr)
Jun 30, 2025	Day	1	8146	35264	10517	0
Jun 30, 2025	Day	2	14120	65874	22260	0
Jun 30, 2025	Night	2	9789	41542	13661	0
Jun 29, 2025	Day	2	18951	81932	26679	0
Jun 29, 2025	Night	2	18197	85675	29447	0
Jun 28, 2025	Day	1	15927	72594	22447	0
Jun 28, 2025	Night	1	14182	54030	16345	0
Jun 28, 2025	Day	2	17352	79441	24443	0
Jun 28, 2025	Night	2	16336	76914	24171	0
Jun 27, 2025	Day	1	10593	45930	13736	0
Jun 27, 2025	Night	1	13477	50396	15777	0
Jun 27, 2025	Day	2	13815	46589	15780	0
Jun 27, 2025	Night	2	12504	47364	13494	0
Jun 26, 2025	Day	1	10742	43548	13423	0
Jun 26, 2025	Night	1	10860	46553	14973	0
Jun 26, 2025	Day	2	11907	52856	16019	0
Jun 26, 2025	Night	2	13179	51501	15463	0
Jun 25, 2025	Day	1	1497	0	0	0
Jun 25, 2025	Night	1	6648	23750	6972	0
Jun 25, 2025	Day	2	1483	0	0	0
Jun 24, 2025	Day	1	15638	72866	22083	0
Jun 24, 2025	Night	1	16570	69451	22594	0
Jun 23, 2025	Day	1	10140	44026	13804	0
Jun 23, 2025	Night	1	15599	69362	20047	0
Jun 22, 2025	Day	1	11619	52438	16745	0
Jun 22, 2025	Night	1	16008	64186	19395	0

**INDIANA DEPARTMENT OF ENVIRONMENTAL MANAGEMENT
OFFICE OF AIR QUALITY**

COMPLIANCE SECTION
SO2 Emissions

Source Name: United States Mineral Products Company d.b.a. Isolatek International
 Source Address: 701 N Broadway, Huntington, IN 46750
 Mailing Address: 701 N Broadway, Huntington, IN 46750

Apr 1, 2025 TO Jun 30, 2025

Date	Shift	Cupola	Coke (lbs/hr)	Slag (lbs/hr)	Feldspar (lbs/hr)	Other (lbs/hr)
Jun 22, 2025	Day	2	7931	17928	6049	0
Jun 22, 2025	Night	2	9575	39229	11640	0
Jun 21, 2025	Day	1	14256	59090	17404	0
Jun 21, 2025	Night	1	15487	67041	20313	0
Jun 21, 2025	Day	2	12191	52975	15600	0
Jun 21, 2025	Night	2	11941	53195	15907	0
Jun 20, 2025	Day	1	7892	30929	9633	0
Jun 20, 2025	Night	1	8645	31035	9641	0
Jun 20, 2025	Day	2	15061	60500	18634	0
Jun 20, 2025	Night	2	9182	31790	9557	0
Jun 18, 2025	Night	1	4349	19046	5609	0
Jun 18, 2025	Night	2	5363	24432	6968	0
Jun 17, 2025	Day	1	10211	45799	13252	0
Jun 17, 2025	Night	1	9112	31775	9967	0
Jun 17, 2025	Day	2	16113	73749	24512	0
Jun 17, 2025	Night	2	18108	76881	22537	0
Jun 16, 2025	Day	1	15153	66507	19729	0
Jun 16, 2025	Night	1	14054	55384	16365	0
Jun 16, 2025	Day	2	10582	41505	11412	0
Jun 16, 2025	Night	2	16281	67831	19994	0
Jun 15, 2025	Day	1	15625	71922	21291	0
Jun 15, 2025	Night	1	14223	61702	18884	0
Jun 15, 2025	Day	2	17126	78005	23244	0
Jun 15, 2025	Night	2	12864	59271	17949	0
Jun 14, 2025	Day	1	15146	69000	20218	0
Jun 14, 2025	Night	1	15212	44033	12711	0

**INDIANA DEPARTMENT OF ENVIRONMENTAL MANAGEMENT
OFFICE OF AIR QUALITY**

COMPLIANCE SECTION
SO2 Emissions

Source Name: United States Mineral Products Company d.b.a. Isolatek International
Source Address: 701 N Broadway, Huntington, IN 46750
Mailing Address: 701 N Broadway, Huntington, IN 46750

Apr 1, 2025 TO Jun 30, 2025

Date	Shift	Cupola	Coke (lbs/hr)	Slag (lbs/hr)	Feldspar (lbs/hr)	Other (lbs/hr)
Jun 14, 2025	Day	2	16648	76961	23174	0
Jun 14, 2025	Night	2	16877	64518	19975	0
Jun 13, 2025	Day	1	16398	75546	23245	0
Jun 13, 2025	Night	1	15740	65449	19888	0
Jun 13, 2025	Day	2	13747	52896	15033	0
Jun 13, 2025	Night	2	15032	57495	16902	0
Jun 12, 2025	Day	1	17215	78649	23340	0
Jun 12, 2025	Night	1	12979	57439	17194	0
Jun 12, 2025	Day	2	14673	62917	19201	0
Jun 12, 2025	Night	2	13796	58302	18888	0
Jun 11, 2025	Night	1	9314	30171	8893	0
Jun 11, 2025	Night	2	7794	15908	4574	0
Jun 10, 2025	Day	1	15910	71966	20600	0
Jun 10, 2025	Night	1	13962	62626	17980	0
Jun 10, 2025	Day	2	15976	69456	19927	0
Jun 10, 2025	Night	2	15700	58544	17064	0
Jun 9, 2025	Day	1	14039	62735	18267	0
Jun 9, 2025	Night	1	13880	53412	16389	0
Jun 9, 2025	Day	2	13037	59733	17987	0
Jun 9, 2025	Night	2	15773	65275	21077	0
Jun 8, 2025	Day	1	17567	73259	22797	0
Jun 8, 2025	Night	1	15980	59008	18626	0
Jun 8, 2025	Day	2	12435	42822	12622	0
Jun 8, 2025	Night	2	15997	56822	16893	0
Jun 7, 2025	Day	1	16072	72870	23813	0
Jun 7, 2025	Night	1	16928	71394	20815	0

**INDIANA DEPARTMENT OF ENVIRONMENTAL MANAGEMENT
OFFICE OF AIR QUALITY**

COMPLIANCE SECTION
SO2 Emissions

Source Name: United States Mineral Products Company d.b.a. Isolatek International
 Source Address: 701 N Broadway, Huntington, IN 46750
 Mailing Address: 701 N Broadway, Huntington, IN 46750

Apr 1, 2025 TO Jun 30, 2025

Date	Shift	Cupola	Coke (lbs/hr)	Slag (lbs/hr)	Feldspar (lbs/hr)	Other (lbs/hr)
Jun 7, 2025	Day	2	10938	46485	13308	0
Jun 7, 2025	Night	2	12714	35017	10854	0
Jun 6, 2025	Day	1	10708	48319	15399	0
Jun 6, 2025	Night	1	16296	70387	21568	0
Jun 6, 2025	Day	2	13781	61554	18169	0
Jun 6, 2025	Night	2	15624	69592	20578	0
Jun 5, 2025	Day	1	15078	68286	21886	0
Jun 5, 2025	Night	1	14327	62646	19181	0
Jun 5, 2025	Day	2	2381	6313	2081	0
Jun 5, 2025	Night	2	9429	29625	9070	0
Jun 4, 2025	Day	1	1446	3131	953	0
Jun 4, 2025	Night	1	15976	64070	19698	0
Jun 4, 2025	Day	2	5018	0	0	0
Jun 4, 2025	Night	2	5923	23231	6800	0
Jun 3, 2025	Day	1	13777	64216	19029	0
Jun 3, 2025	Night	1	13689	58823	17482	0
Jun 2, 2025	Day	1	15573	66230	24182	0
Jun 2, 2025	Night	1	13569	62257	18816	0
Jun 2, 2025	Day	2	17738	85392	26137	0
Jun 2, 2025	Night	2	12419	61604	18726	0
Jun 1, 2025	Day	1	15702	69638	20331	0
Jun 1, 2025	Night	1	15990	72046	22056	0
Jun 1, 2025	Day	2	16533	79063	24886	0
Jun 1, 2025	Night	2	14951	72726	22510	0
May 31, 2025	Day	1	14691	64069	20473	0
May 31, 2025	Night	1	17386	67238	20138	0

**INDIANA DEPARTMENT OF ENVIRONMENTAL MANAGEMENT
OFFICE OF AIR QUALITY**

COMPLIANCE SECTION
SO2 Emissions

Source Name: United States Mineral Products Company d.b.a. Isolatek International
 Source Address: 701 N Broadway, Huntington, IN 46750
 Mailing Address: 701 N Broadway, Huntington, IN 46750

Apr 1, 2025 TO Jun 30, 2025

Date	Shift	Cupola	Coke (lbs/hr)	Slag (lbs/hr)	Feldspar (lbs/hr)	Other (lbs/hr)
May 31, 2025	Day	2	16571	79093	22826	0
May 31, 2025	Night	2	15965	73001	22556	0
May 30, 2025	Day	1	12535	57534	16700	0
May 30, 2025	Night	1	14886	66289	19328	0
May 30, 2025	Day	2	13542	59113	17123	0
May 30, 2025	Night	2	16611	66363	19339	0
May 29, 2025	Day	1	12082	42469	13692	0
May 29, 2025	Night	1	12366	52575	16179	0
May 29, 2025	Day	2	14831	71000	21399	0
May 29, 2025	Night	2	17347	72475	22142	0
May 28, 2025	Night	1	4736	6259	3398	0
May 28, 2025	Night	2	6092	12611	4122	0
May 26, 2025	Night	2	744	3145	915	0
May 25, 2025	Day	1	14293	67595	21571	0
May 25, 2025	Night	1	14428	62899	20423	0
May 25, 2025	Day	2	14968	69055	20842	0
May 25, 2025	Night	2	15223	61284	19355	0
May 24, 2025	Day	1	13626	64731	19560	0
May 24, 2025	Night	1	13218	59387	18210	0
May 24, 2025	Day	2	7300	34338	9953	0
May 24, 2025	Night	2	16337	71356	21785	0
May 23, 2025	Day	1	17158	78512	22724	0
May 23, 2025	Night	1	17969	79021	22964	0
May 23, 2025	Day	2	18416	83151	24772	0
May 23, 2025	Night	2	16551	75166	21564	0
May 22, 2025	Day	1	6262	24098	6957	0

INDIANA DEPARTMENT OF ENVIRONMENTAL MANAGEMENT**OFFICE OF AIR QUALITY**COMPLIANCE SECTION
SO2 Emissions

Source Name: United States Mineral Products Company d.b.a. Isolatek International
Source Address: 701 N Broadway, Huntington, IN 46750
Mailing Address: 701 N Broadway, Huntington, IN 46750

Apr 1, 2025 TO Jun 30, 2025

Date	Shift	Cupola	Coke (lbs/hr)	Slag (lbs/hr)	Feldspar (lbs/hr)	Other (lbs/hr)
May 22, 2025	Night	1	7188	27338	9290	0
May 22, 2025	Day	2	16392	73659	21228	0
May 22, 2025	Night	2	14865	62406	20780	0
May 21, 2025	Day	1	1394	0	0	0
May 21, 2025	Night	1	3673	9390	5077	0
May 21, 2025	Day	2	647	3088	866	0
May 21, 2025	Night	2	14894	49727	15523	0
May 20, 2025	Day	1	12741	56047	16670	0
May 20, 2025	Night	1	16950	65076	20445	0
May 20, 2025	Day	2	15801	70190	20495	0
May 20, 2025	Night	2	15104	66534	19513	0
May 19, 2025	Day	1	16347	72627	21229	0
May 19, 2025	Night	1	13370	56534	16496	0
May 19, 2025	Day	2	17369	81103	24200	0
May 19, 2025	Night	2	16474	76731	22942	0
May 18, 2025	Day	1	14508	66118	20916	0
May 18, 2025	Night	1	14849	55423	18032	0
May 18, 2025	Day	2	15616	73908	24437	0
May 18, 2025	Night	2	16904	78067	23079	0
May 17, 2025	Day	1	17259	77817	23688	0
May 17, 2025	Night	1	15691	67022	20041	0
May 17, 2025	Day	2	16044	73518	21840	0
May 17, 2025	Night	2	17234	72506	23419	0
May 16, 2025	Day	1	16995	82395	23858	0
May 16, 2025	Night	1	15434	63268	20301	0
May 16, 2025	Day	2	13830	57862	18328	0

**INDIANA DEPARTMENT OF ENVIRONMENTAL MANAGEMENT
OFFICE OF AIR QUALITY**

COMPLIANCE SECTION
SO2 Emissions

Source Name: United States Mineral Products Company d.b.a. Isolatek International
 Source Address: 701 N Broadway, Huntington, IN 46750
 Mailing Address: 701 N Broadway, Huntington, IN 46750

Apr 1, 2025 TO Jun 30, 2025

Date	Shift	Cupola	Coke (lbs/hr)	Slag (lbs/hr)	Feldspar (lbs/hr)	Other (lbs/hr)
May 16, 2025	Night	2	12476	43686	14532	0
May 15, 2025	Day	1	16132	74428	22945	0
May 15, 2025	Night	1	18158	75698	23310	0
May 15, 2025	Day	2	8902	35766	11017	0
May 15, 2025	Night	2	7330	27291	8307	0
May 14, 2025	Night	1	7818	19419	5391	0
May 14, 2025	Day	2	1483	0	0	0
May 14, 2025	Night	2	5491	18043	5015	0
May 13, 2025	Day	1	17071	78763	24473	0
May 13, 2025	Night	1	8079	29893	9085	0
May 13, 2025	Day	2	15106	66003	20237	0
May 13, 2025	Night	2	7614	34679	10519	0
May 12, 2025	Day	1	15335	71609	20325	0
May 12, 2025	Night	1	15622	62225	17780	0
May 12, 2025	Day	2	15759	70906	20577	0
May 12, 2025	Night	2	15273	60937	17348	0
May 11, 2025	Day	1	17299	82545	23767	0
May 11, 2025	Night	1	15184	68094	21382	0
May 11, 2025	Day	2	14665	69806	20838	0
May 11, 2025	Night	2	13751	62270	18615	0
May 10, 2025	Day	1	16691	77979	22439	0
May 10, 2025	Night	1	16853	74819	21899	0
May 10, 2025	Day	2	15822	73185	21901	0
May 10, 2025	Night	2	16369	73007	22023	0
May 9, 2025	Day	1	17469	78005	23512	0
May 9, 2025	Night	1	20080	89503	26429	0

**INDIANA DEPARTMENT OF ENVIRONMENTAL MANAGEMENT
OFFICE OF AIR QUALITY**

COMPLIANCE SECTION
SO2 Emissions

Source Name: United States Mineral Products Company d.b.a. Isolatek International
 Source Address: 701 N Broadway, Huntington, IN 46750
 Mailing Address: 701 N Broadway, Huntington, IN 46750

Apr 1, 2025 TO Jun 30, 2025

Date	Shift	Cupola	Coke (lbs/hr)	Slag (lbs/hr)	Feldspar (lbs/hr)	Other (lbs/hr)
May 9, 2025	Day	2	18519	85730	25167	0
May 9, 2025	Night	2	19772	87701	25989	0
May 8, 2025	Day	1	10223	40180	12020	0
May 8, 2025	Night	1	13784	60098	17367	0
May 8, 2025	Day	2	8832	37180	11183	0
May 8, 2025	Night	2	15903	68834	19950	0
May 7, 2025	Night	1	4997	16230	4976	0
May 7, 2025	Night	2	16434	38140	11871	0
May 6, 2025	Day	1	11839	48711	15148	0
May 6, 2025	Night	1	14440	52936	15201	0
May 6, 2025	Day	2	15854	70784	21898	0
May 6, 2025	Night	2	18803	81683	22905	0
May 5, 2025	Day	1	7254	23561	7078	0
May 5, 2025	Night	1	9138	30541	8931	0
May 5, 2025	Day	2	16357	75412	23719	0
May 5, 2025	Night	2	11163	51600	16229	0
May 4, 2025	Night	1	9233	29905	8845	0
May 4, 2025	Day	2	3000	4728	1378	0
May 4, 2025	Night	2	6736	31396	9056	0
May 3, 2025	Day	1	18009	85624	25887	0
May 3, 2025	Night	1	17823	80428	24303	0
May 3, 2025	Night	2	3392	6296	2141	0
May 2, 2025	Day	1	15077	70321	23011	0
May 2, 2025	Night	1	16222	70902	20818	0
May 2, 2025	Day	2	6209	27491	8643	0
May 2, 2025	Night	2	15917	68981	21085	0

INDIANA DEPARTMENT OF ENVIRONMENTAL MANAGEMENT**OFFICE OF AIR QUALITY**COMPLIANCE SECTION
SO2 Emissions

Source Name: United States Mineral Products Company d.b.a. Isolatek International
Source Address: 701 N Broadway, Huntington, IN 46750
Mailing Address: 701 N Broadway, Huntington, IN 46750

Apr 1, 2025 TO Jun 30, 2025

Date	Shift	Cupola	Coke (lbs/hr)	Slag (lbs/hr)	Feldspar (lbs/hr)	Other (lbs/hr)
May 1, 2025	Day	1	14256	66151	20632	0
May 1, 2025	Night	1	14445	66171	20371	0
May 1, 2025	Day	2	15369	66683	21398	0
May 1, 2025	Night	2	13859	54323	16988	0
Apr 30, 2025	Night	1	11333	39376	11759	0
Apr 30, 2025	Day	2	1509	0	0	0
Apr 30, 2025	Night	2	3529	15029	4328	0
Apr 29, 2025	Day	1	14546	68782	20782	0
Apr 29, 2025	Night	1	14719	68584	20130	0
Apr 29, 2025	Day	2	14419	69134	20519	0
Apr 29, 2025	Night	2	15217	72681	22203	0
Apr 28, 2025	Day	1	15227	72460	21602	0
Apr 28, 2025	Night	1	15962	69989	20980	0
Apr 28, 2025	Day	2	13516	61703	18177	0
Apr 28, 2025	Night	2	12590	55670	17326	0
Apr 27, 2025	Day	1	10378	48863	14381	0
Apr 27, 2025	Night	1	15910	70635	22217	0
Apr 27, 2025	Day	2	10125	47401	13940	0
Apr 27, 2025	Night	2	10397	48037	15184	0
Apr 26, 2025	Day	1	13805	34211	11176	0
Apr 26, 2025	Night	1	13625	65481	19115	0
Apr 26, 2025	Day	2	15231	69410	20826	0
Apr 26, 2025	Night	2	12788	59778	18266	0
Apr 25, 2025	Day	1	13214	59983	17628	0
Apr 25, 2025	Night	1	14773	70490	21652	0
Apr 25, 2025	Day	2	15370	74079	22257	0

**INDIANA DEPARTMENT OF ENVIRONMENTAL MANAGEMENT
OFFICE OF AIR QUALITY**

COMPLIANCE SECTION
SO2 Emissions

Source Name: United States Mineral Products Company d.b.a. Isolatek International
 Source Address: 701 N Broadway, Huntington, IN 46750
 Mailing Address: 701 N Broadway, Huntington, IN 46750

Apr 1, 2025 TO Jun 30, 2025

Date	Shift	Cupola	Coke (lbs/hr)	Slag (lbs/hr)	Feldspar (lbs/hr)	Other (lbs/hr)
Apr 25, 2025	Night	2	16577	78276	25298	0
Apr 24, 2025	Day	1	8163	37889	11863	0
Apr 24, 2025	Night	1	4034	19164	5340	0
Apr 24, 2025	Day	2	11307	52084	16311	0
Apr 24, 2025	Night	2	17836	79465	24136	0
Apr 23, 2025	Day	1	2109	6315	1915	0
Apr 23, 2025	Night	1	3013	0	0	0
Apr 23, 2025	Day	2	17909	83599	25754	0
Apr 23, 2025	Night	2	13001	59958	18209	0
Apr 22, 2025	Day	1	5995	15872	4504	0
Apr 22, 2025	Night	1	6823	20552	6177	0
Apr 22, 2025	Day	2	19171	82232	24385	0
Apr 22, 2025	Night	2	17131	77433	24040	0
Apr 21, 2025	Day	1	11411	38148	12047	0
Apr 21, 2025	Night	1	6864	25070	8247	0
Apr 21, 2025	Day	2	9887	31818	9652	0
Apr 21, 2025	Night	2	7321	31503	11857	0
Apr 18, 2025	Night	1	3067	14308	4103	0
Apr 17, 2025	Day	1	18003	83424	26265	0
Apr 17, 2025	Night	1	17221	79783	24569	0
Apr 16, 2025	Day	1	18477	85586	26612	0
Apr 16, 2025	Night	1	17276	77234	22508	0
Apr 15, 2025	Day	1	6800	17928	5514	0
Apr 15, 2025	Night	1	13911	61470	18643	0
Apr 15, 2025	Day	2	11674	54385	16777	0
Apr 15, 2025	Night	2	7254	31898	10607	0

**INDIANA DEPARTMENT OF ENVIRONMENTAL MANAGEMENT
OFFICE OF AIR QUALITY**

COMPLIANCE SECTION
SO2 Emissions

Source Name: United States Mineral Products Company d.b.a. Isolatek International
 Source Address: 701 N Broadway, Huntington, IN 46750
 Mailing Address: 701 N Broadway, Huntington, IN 46750

Apr 1, 2025 TO Jun 30, 2025

Date	Shift	Cupola	Coke (lbs/hr)	Slag (lbs/hr)	Feldspar (lbs/hr)	Other (lbs/hr)
Apr 14, 2025	Day	1	16197	64242	19120	0
Apr 14, 2025	Night	1	15696	70474	20939	0
Apr 14, 2025	Day	2	18441	78603	23589	0
Apr 14, 2025	Night	2	26436	72165	22062	0
Apr 13, 2025	Day	1	12288	54973	16528	0
Apr 13, 2025	Night	1	14544	64355	19676	0
Apr 13, 2025	Day	2	15057	59871	17951	0
Apr 13, 2025	Night	2	16070	72310	21650	0
Apr 12, 2025	Day	1	17438	79130	26279	0
Apr 12, 2025	Night	1	15678	71207	20304	0
Apr 12, 2025	Day	2	17397	79056	24068	0
Apr 12, 2025	Night	2	16374	74175	21976	0
Apr 11, 2025	Day	1	18231	80544	23918	0
Apr 11, 2025	Night	1	18519	81960	24502	0
Apr 11, 2025	Day	2	18159	80227	23330	0
Apr 11, 2025	Night	2	19017	83516	24354	0
Apr 10, 2025	Day	1	8656	34368	9962	0
Apr 10, 2025	Night	1	9379	37606	11466	0
Apr 10, 2025	Day	2	19416	81814	24018	0
Apr 10, 2025	Night	2	19205	81276	23389	0
Apr 9, 2025	Night	1	503	0	0	0
Apr 9, 2025	Day	2	1384	1580	439	0
Apr 9, 2025	Night	2	18069	59833	17195	0
Apr 8, 2025	Day	1	10539	37877	11431	0
Apr 8, 2025	Night	1	11225	46238	13849	0
Apr 8, 2025	Day	2	9450	37661	10942	0

INDIANA DEPARTMENT OF ENVIRONMENTAL MANAGEMENT

OFFICE OF AIR QUALITY

COMPLIANCE SECTION
SO2 Emissions

Source Name: United States Mineral Products Company d.b.a. Isolatek International
Source Address: 701 N Broadway, Huntington, IN 46750
Mailing Address: 701 N Broadway, Huntington, IN 46750

Apr 1, 2025 TO Jun 30, 2025

Date	Shift	Cupola	Coke (lbs/hr)	Slag (lbs/hr)	Feldspar (lbs/hr)	Other (lbs/hr)
Apr 8, 2025	Night	2	8507	34519	9815	0
Apr 7, 2025	Day	1	16655	66079	19551	0
Apr 7, 2025	Night	1	20265	81867	24047	0
Apr 7, 2025	Day	2	19996	82386	23444	0
Apr 7, 2025	Night	2	17981	63843	20215	0
Apr 6, 2025	Day	1	17473	67935	24255	0
Apr 6, 2025	Night	1	19147	74266	23009	0
Apr 6, 2025	Day	2	17813	71528	21887	0
Apr 6, 2025	Night	2	20098	77343	22347	0
Apr 5, 2025	Day	1	5994	18793	5404	0
Apr 5, 2025	Night	1	16838	52753	15227	0
Apr 5, 2025	Day	2	18934	78201	22970	0
Apr 5, 2025	Night	2	16720	67808	19788	0
Apr 4, 2025	Day	1	12537	52259	16928	0
Apr 4, 2025	Night	1	15620	68123	21408	0
Apr 4, 2025	Day	2	19778	86738	26435	0
Apr 4, 2025	Night	2	18407	80107	26640	0
Apr 3, 2025	Day	1	14575	59643	18143	0
Apr 3, 2025	Night	1	9828	34598	10137	0
Apr 3, 2025	Day	2	17124	72392	23771	0
Apr 3, 2025	Night	2	15793	66127	20021	0
Apr 2, 2025	Day	1	1493	0	0	0
Apr 2, 2025	Night	1	4216	12805	3589	0
Apr 2, 2025	Night	2	6877	20779	6039	0
Apr 1, 2025	Day	1	13899	60140	17882	0
Apr 1, 2025	Night	1	8365	36438	10804	0

**INDIANA DEPARTMENT OF ENVIRONMENTAL MANAGEMENT
OFFICE OF AIR QUALITY**

COMPLIANCE SECTION
SO2 Emissions

Source Name: United States Mineral Products Company d.b.a. Isolatek International
Source Address: 701 N Broadway, Huntington, IN 46750
Mailing Address: 701 N Broadway, Huntington, IN 46750

Apr 1, 2025 TO Jun 30, 2025

Date	Shift	Cupola	Coke (lbs/hr)	Slag (lbs/hr)	Feldspar (lbs/hr)	Other (lbs/hr)
Apr 1, 2025	Day	2	16079	69802	21909	0
Apr 1, 2025	Night	2	9429	41192	12307	0

**INDIANA DEPARTMENT OF ENVIRONMENTAL MANAGEMENT
OFFICE OF AIR QUALITY**

COMPLIANCE SECTION
SO₂ Emissions

Source Name: United States Mineral Products Company d.b.a. Isolotek International
Source Address: 701 N Broadway, Huntington, IN 46750
Mailing Address: 701 N Broadway, Huntington, IN 46750

Apr 1, 2025 TO Jun 30, 2025

Month	Emission Factor Stack #1 (lb SO ₂ /ton)	Emission Factor Stack #3 (lb SO ₂ /ton)	Material Input (tons/Month)	Hours of Operation (hrs)	Average Hourly SO ₂ Stack #1 (lb/hr)	Hourly SO ₂ Stack #1 Limit (lb/hr)	Average Hourly SO ₂ Stack #3 (lb/hr)	Hourly SO ₂ Stack #3 Limit (lb/hr)
Apr	13.8	0.07	4383.88	549	120.81	160	0.61	20
May	13.8	0.07	4607.70	553	126.04	160	0.64	20
Jun	13.8	0.07	4184.23	571	110.85	160	0.56	20

Emission Factor = Stack Test Result

Stack #1 = Cupolas

Stack #3 = Screen Houses

via email 10/27/2025



October 14th , 2025

Indiana Department of Environmental Management
Office of Air Quality
Mail Code: 61-50 IGCN 1003
100 N. Senate Ave.
Indianapolis, Indiana 46204-2251

IN THE MATTER OF:
ORDER OF THE COMMISSIONER
PURSUANT TO IC 13-14-2-1
FOR U.S. MINERAL PRODUCTS COMPANY
(D/B/A ISOLATEK INTERNATIONAL)

Re: Quarterly Compliance Report – July 1st - September 30th 2025
United States Mineral Products Company d.b.a. Isolatek International
Permit No. 069-38295-00021
ID No. 069-00021

Notice and Order of the Commissioner of the Department of Environmental Management dated February 12, 2024. The reporting period commenced on the first day of July and concluded on September 30th, 2025. SO₂ emissions calculated pursuant to the order for stack #1 (baghouse) which includes emissions from both Cupola Furnaces is a daily average of 108.37 lbs/hr. & Stack #3 (screen house stack from both screenhouses) a daily average of .55 lbs/hr. Total material throughput during this time frame was 11,889.47 tons for the quarter. Please note the SO₂ emission factor used for the entirety of this reporting period is based upon the stack test conducted April 16, 2024. This emission factor will be used as well in future reports until a subsequent formal stack test is performed.

The compliance reports are as follows:

- A report of the monthly average hourly SO₂ emissions in pounds per hour from cupulas EU #1 and EU #2.
- A report of the monthly average hourly SO₂ emissions in pounds per hour from blow chambers EU #3 and EU #4.
- A report of throughput of all input materials (coke, slag, and other feed material (e.g., feldspar)) in pounds per hour for each cupula (EU #1 and EU #2) for each 12-hour shift.
- A report of throughput of output materials (mineral wool fiber, fly ash and slag waste) for a defined reported time period as shown in the report.

Respectfully Submitted,
Jason Trent
Regional Operations Manager-
Isolatek International

Huntington, Indiana
701 North Broadway Street
46750
Desk (260) -356-2040 ext. 351
Email: jtrent@Isolatek.com

Attachments

cc: Plant Compliance Records

**INDIANA DEPARTMENT OF ENVIRONMENTAL MANAGEMENT
OFFICE OF AIR QUALITY**

COMPLIANCE SECTION
SO₂ Emissions

Source Name: United States Mineral Products Company d.b.a. Isolotek International
 Source Address: 701 N Broadway, Huntington, IN 46750
 Mailing Address: 701 N Broadway, Huntington, IN 46750

Jul 1, 2025 TO Sep 30, 2025

Month	Emission Factor Stack #1 (lb SO2/ton)	Emission Factor Stack #3 (lb SO2/ton)	Material Input (tons/Month)	Hours of Operation (hrs)	Average Hourly SO2 Stack #1 (lb/hr)	Hourly SO2 Stack #1 Limit (lb/hr)	Average Hourly SO2 Stack #3 (lb/hr)	Hourly SO2 Stack #3 Limit (lb/hr)
Jul	13.8	0.07	3783.37	509	112.44	160	0.57	20
Aug	13.8	0.07	4129.61	618	101.08	160	0.51	20
Sep	13.8	0.07	3976.49	539	111.6	160	0.57	20

Emission Factor = Stack Test Result

Stack #1 = Cupolas

Stack #3 = Screen Houses

**INDIANA DEPARTMENT OF ENVIRONMENTAL MANAGEMENT
OFFICE OF AIR QUALITY**

COMPLIANCE SECTION
SO2 Emissions

Source Name: United States Mineral Products Company d.b.a. Isolatek International
 Source Address: 701 N Broadway, Huntington, IN 46750
 Mailing Address: 701 N Broadway, Huntington, IN 46750

Jul 1, 2025 TO Sep 30, 2025

Date	Shift	Wool (tons/hr)	Flyash (tons/hr)	Slag Waste (tons/hr)	Run Hours
Jul 1, 2025	Day	8.36	9.23	1.07	11.5
Jul 1, 2025	Night	6.74	9.23	1.33	11.5
Jul 2, 2025	Day	9.69	9.23	1.3	11.5
Jul 2, 2025	Night	13.08	9.23	1.24	11.5
Jul 3, 2025	Day	4.97	9.65	1.34	11
Jul 3, 2025	Night	3.4	9.65	0.84	11
Jul 4, 2025	Day	12.85	21.24	0	5
Jul 4, 2025	Night	0	21.24	0	5
Jul 5, 2025	Day	0	106.18	0	1
Jul 5, 2025	Night	0	106.18	0	1
Jul 6, 2025	Day	0	106.18	0	1
Jul 6, 2025	Night	5.61	106.18	0	1
Jul 7, 2025	Day	0	26.46	1.88	4
Jul 7, 2025	Night	7.6	26.46	2.88	4
Jul 8, 2025	Day	6.25	9.19	1.41	11.5
Jul 8, 2025	Night	9.95	9.19	0.97	11.5
Jul 9, 2025	Day	5.59	8.81	1.5	12
Jul 9, 2025	Night	9.15	8.81	1.37	12
Jul 10, 2025	Day	8.1	8.81	0.71	12
Jul 10, 2025	Night	6.69	8.81	1.35	12
Jul 11, 2025	Day	8.03	9.21	1.3	11.5
Jul 11, 2025	Night	10.74	9.21	0.98	11.5
Jul 12, 2025	Day	7.25	10.6	1.64	10
Jul 12, 2025	Night	11.17	10.6	1.22	10
Jul 13, 2025	Day	5.1	8.85	0.73	12
Jul 13, 2025	Night	3.87	8.85	0.92	12
Jul 14, 2025	Day	3.92	8.86	1.31	12

**INDIANA DEPARTMENT OF ENVIRONMENTAL MANAGEMENT
OFFICE OF AIR QUALITY**

COMPLIANCE SECTION
SO2 Emissions

Source Name: United States Mineral Products Company d.b.a. Isolotek International
 Source Address: 701 N Broadway, Huntington, IN 46750
 Mailing Address: 701 N Broadway, Huntington, IN 46750

Jul 1, 2025 TO Sep 30, 2025

Date	Shift	Wool (tons/hr)	Flyash (tons/hr)	Slag Waste (tons/hr)	Run Hours
Jul 14, 2025	Night	8.6	8.86	1.05	12
Jul 15, 2025	Day	7.21	8.88	1.27	12
Jul 15, 2025	Night	7.13	8.88	0.76	12
Jul 16, 2025	Day	0	26.63	0	4
Jul 16, 2025	Night	2.85	26.63	0.19	4
Jul 17, 2025	Day	0.17	14.21	1.8	7.5
Jul 17, 2025	Night	10.33	14.21	2.16	7.5
Jul 18, 2025	Day	7.37	9.27	1.42	11.5
Jul 18, 2025	Night	11.03	9.27	1.19	11.5
Jul 19, 2025	Day	6.07	9.3	1.15	11.5
Jul 19, 2025	Night	8.01	9.3	1.23	11.5
Jul 20, 2025	Day	6.74	8.92	1.18	12
Jul 20, 2025	Night	11.23	8.92	1.09	12
Jul 21, 2025	Day	0.23	8.95	1.09	12
Jul 21, 2025	Night	7.6	8.95	1.37	12
Jul 22, 2025	Day	8.99	10.73	0.96	10
Jul 22, 2025	Night	4.44	10.73	0.52	10
Jul 23, 2025	Day	12.94	30.65	0	3.5
Jul 23, 2025	Night	3.57	30.65	0	3.5
Jul 24, 2025	Day	-7.06	107.26	0	1
Jul 24, 2025	Night	-24.22	107.26	0	1
Jul 25, 2025	Day	1.53	21.35	1.07	5
Jul 25, 2025	Night	2.82	21.35	0.74	5
Jul 26, 2025	Day	6.97	14.18	1.17	7.5
Jul 26, 2025	Night	4.03	14.18	1.01	7.5
Jul 27, 2025	Day	2.12	9.66	0.91	11
Jul 27, 2025	Night	4.77	9.66	1.01	11

**INDIANA DEPARTMENT OF ENVIRONMENTAL MANAGEMENT
OFFICE OF AIR QUALITY**

COMPLIANCE SECTION
SO2 Emissions

Source Name: United States Mineral Products Company d.b.a. Isolotek International
 Source Address: 701 N Broadway, Huntington, IN 46750
 Mailing Address: 701 N Broadway, Huntington, IN 46750

Jul 1, 2025 TO Sep 30, 2025

Date	Shift	Wool (tons/hr)	Flyash (tons/hr)	Slag Waste (tons/hr)	Run Hours
Jul 28, 2025	Day	6.58	8.87	1.19	12
Jul 28, 2025	Night	7.69	8.87	0.68	12
Jul 29, 2025	Day	3.19	10.65	0.72	10
Jul 29, 2025	Night	5.12	10.65	1.16	10
Jul 30, 2025	Day	14.23	17.63	0.09	6
Jul 30, 2025	Night	12.1	17.63	2.55	6
Jul 31, 2025	Day	10.79	8.82	1.21	12
Jul 31, 2025	Night	7.12	8.82	0.66	12
Aug 1, 2025	Day	15.57	10.09	1.03	10.5
Aug 1, 2025	Night	7.56	10.09	0.71	10.5
Aug 2, 2025	Day	5.46	11.14	1.32	9.5
Aug 2, 2025	Night	10.22	11.14	1.75	9.5
Aug 3, 2025	Day	7.52	8.84	1.16	12
Aug 3, 2025	Night	6.82	8.84	1.27	12
Aug 4, 2025	Day	8.44	8.85	1.03	12
Aug 4, 2025	Night	10.12	8.85	0.46	12
Aug 5, 2025	Day	2.56	11.15	1.64	9.5
Aug 5, 2025	Night	3.78	11.15	1.5	9.5
Aug 6, 2025	Day	4.28	9.2	1.01	11.5
Aug 6, 2025	Night	5.71	9.2	0.46	11.5
Aug 7, 2025	Day	6.76	23.52	0	4.5
Aug 7, 2025	Night	-0.47	23.52	1.56	4.5
Aug 8, 2025	Day	6.89	11.22	1.12	9.5
Aug 8, 2025	Night	4.1	11.22	1.28	9.5
Aug 9, 2025	Day	6.89	9.3	1.19	11.5
Aug 9, 2025	Night	9.02	9.3	1.11	11.5
Aug 10, 2025	Day	10.12	9.31	1.15	11.5

INDIANA DEPARTMENT OF ENVIRONMENTAL MANAGEMENT**OFFICE OF AIR QUALITY**COMPLIANCE SECTION
SO2 Emissions

Source Name: United States Mineral Products Company d.b.a. Isolatek International
Source Address: 701 N Broadway, Huntington, IN 46750
Mailing Address: 701 N Broadway, Huntington, IN 46750

Jul 1, 2025 TO Sep 30, 2025

Date	Shift	Wool (tons/hr)	Flyash (tons/hr)	Slag Waste (tons/hr)	Run Hours
Aug 10, 2025	Night	-0.19	9.31	1.15	11.5
Aug 11, 2025	Day	7.74	8.93	1.17	12
Aug 11, 2025	Night	6.88	8.93	0.63	12
Aug 12, 2025	Day	5.11	8.97	0.66	12
Aug 12, 2025	Night	-0.48	8.97	0.79	12
Aug 13, 2025	Day	5.37	9.36	0.74	11.5
Aug 13, 2025	Night	6.72	9.36	0.78	11.5
Aug 14, 2025	Day	0.33	18.2	0	6
Aug 14, 2025	Night	-0.76	18.2	0.99	6
Aug 15, 2025	Day	1.91	11.41	0.37	9.5
Aug 15, 2025	Night	1.9	11.41	1.1	9.5
Aug 16, 2025	Day	5.68	9.05	1.02	12
Aug 16, 2025	Night	6.38	9.05	0.98	12
Aug 17, 2025	Day	6.02	9.07	1.01	12
Aug 17, 2025	Night	7.52	9.07	1.05	12
Aug 18, 2025	Day	7.94	9.07	1.18	12
Aug 18, 2025	Night	6.09	9.07	1.03	12
Aug 19, 2025	Day	8.09	9.47	0.61	11.5
Aug 19, 2025	Night	3.81	9.47	0.45	11.5
Aug 20, 2025	Day	8.98	27.53	0	4
Aug 20, 2025	Night	-1.4	27.53	2.47	4
Aug 21, 2025	Day	4.08	9.56	0.87	11.5
Aug 21, 2025	Night	6.87	9.56	0.61	11.5
Aug 22, 2025	Day	2.67	10.45	0.31	10.5
Aug 22, 2025	Night	2.76	10.45	1.02	10.5
Aug 23, 2025	Day	5.86	9.22	1.13	12
Aug 23, 2025	Night	7.4	9.22	1.15	12

INDIANA DEPARTMENT OF ENVIRONMENTAL MANAGEMENT**OFFICE OF AIR QUALITY**COMPLIANCE SECTION
SO2 Emissions

Source Name: United States Mineral Products Company d.b.a. Isolatek International
Source Address: 701 N Broadway, Huntington, IN 46750
Mailing Address: 701 N Broadway, Huntington, IN 46750

Jul 1, 2025 TO Sep 30, 2025

Date	Shift	Wool (tons/hr)	Flyash (tons/hr)	Slag Waste (tons/hr)	Run Hours
Aug 24, 2025	Day	7.55	9.67	1.29	11.5
Aug 24, 2025	Night	15.6	9.67	1.23	11.5
Aug 25, 2025	Day	2.03	9.29	1.29	12
Aug 25, 2025	Night	7.92	9.29	1.16	12
Aug 26, 2025	Day	6.65	9.34	1.11	12
Aug 26, 2025	Night	7.75	9.34	1.08	12
Aug 27, 2025	Day	15.52	20.77	0	5.5
Aug 27, 2025	Night	3.35	20.77	2.63	5.5
Aug 28, 2025	Day	4.8	9.94	1.19	11.5
Aug 28, 2025	Night	7.33	9.94	0.84	11.5
Aug 29, 2025	Day	5.5	9.94	0.64	11.5
Aug 29, 2025	Night	1.87	9.94	1.06	11.5
Aug 30, 2025	Day	5.53	10	1.35	12
Aug 30, 2025	Night	6.52	10	1.19	12
Aug 31, 2025	Day	7.79	10.46	0.98	11.5
Aug 31, 2025	Night	7.87	10.46	0.1	11.5
Sep 1, 2025	Day	15.06	33.64	0	3.5
Sep 1, 2025	Night	0.14	33.64	0	3.5
Sep 2, 2025	Day	-0.15	117.74	0	1
Sep 2, 2025	Night	-9.66	117.74	0	1
Sep 3, 2025	Day	-0.15	113.36	0	1
Sep 3, 2025	Night	26.73	113.36	10.17	1
Sep 4, 2025	Day	8.51	9.5	1.38	12
Sep 4, 2025	Night	4.93	9.5	1.26	12
Sep 5, 2025	Day	9.16	11.42	1.35	10
Sep 5, 2025	Night	9.04	11.42	1.5	10
Sep 6, 2025	Day	12.92	9.97	1.4	11.5

**INDIANA DEPARTMENT OF ENVIRONMENTAL MANAGEMENT
OFFICE OF AIR QUALITY**

COMPLIANCE SECTION
SO2 Emissions

Source Name: United States Mineral Products Company d.b.a. Isolatek International
 Source Address: 701 N Broadway, Huntington, IN 46750
 Mailing Address: 701 N Broadway, Huntington, IN 46750

Jul 1, 2025 TO Sep 30, 2025

Date	Shift	Wool (tons/hr)	Flyash (tons/hr)	Slag Waste (tons/hr)	Run Hours
Sep 6, 2025	Night	2.26	9.97	0.7	11.5
Sep 7, 2025	Day	5.59	14.22	0.69	8
Sep 7, 2025	Night	3.42	14.22	1.16	8
Sep 8, 2025	Day	4.96	9.92	0.93	11.5
Sep 8, 2025	Night	4.2	9.92	1.27	11.5
Sep 9, 2025	Day	9.98	11.41	0.99	10
Sep 9, 2025	Night	5.9	11.41	0.83	10
Sep 10, 2025	Day	15.3	31.81	0	3.5
Sep 10, 2025	Night	4.88	31.81	1.74	3.5
Sep 11, 2025	Day	3.42	11.13	1.78	10
Sep 11, 2025	Night	11.79	11.13	1.54	10
Sep 12, 2025	Day	7.94	10.65	1.72	10.5
Sep 12, 2025	Night	9.33	10.65	1.68	10.5
Sep 13, 2025	Day	16.79	12.43	1.03	9
Sep 13, 2025	Night	3.68	12.43	1.62	9
Sep 14, 2025	Day	7.35	9.37	1.47	12
Sep 14, 2025	Night	6.12	9.37	1.19	12
Sep 15, 2025	Day	9.62	9.82	1.34	11.5
Sep 15, 2025	Night	1.75	9.82	0.91	11.5
Sep 16, 2025	Day	12.76	14.86	0.48	7.5
Sep 16, 2025	Night	5.39	14.86	0	7.5
Sep 17, 2025	Day	41.13	75.13	0	1.5
Sep 17, 2025	Night	15.33	75.13	8.04	1.5
Sep 18, 2025	Day	5.67	9.91	0.88	11.5
Sep 18, 2025	Night	6.59	9.91	1.2	11.5
Sep 19, 2025	Day	6.87	9.67	1.23	12
Sep 19, 2025	Night	10.39	9.67	1.08	12

**INDIANA DEPARTMENT OF ENVIRONMENTAL MANAGEMENT
OFFICE OF AIR QUALITY**

COMPLIANCE SECTION
SO2 Emissions

Source Name: United States Mineral Products Company d.b.a. Isolatek International
Source Address: 701 N Broadway, Huntington, IN 46750
Mailing Address: 701 N Broadway, Huntington, IN 46750

Jul 1, 2025 TO Sep 30, 2025

Date	Shift	Wool (tons/hr)	Flyash (tons/hr)	Slag Waste (tons/hr)	Run Hours
Sep 20, 2025	Day	8.34	9.89	1.43	12
Sep 20, 2025	Night	8.75	9.89	1.33	12
Sep 21, 2025	Day	7.39	11.13	1.3	11
Sep 21, 2025	Night	8.82	11.13	1.31	11
Sep 22, 2025	Day	7.02	10.58	0.97	12
Sep 22, 2025	Night	6.37	10.58	1.42	12
Sep 23, 2025	Day	8.82	11.06	0.66	12
Sep 23, 2025	Night	2.22	11.06	0.58	12
Sep 24, 2025	Day	14.39	25.62	0.03	5
Sep 24, 2025	Night	7.18	25.62	1.86	5
Sep 25, 2025	Day	1.88	13.49	1.2	10
Sep 25, 2025	Night	6.84	13.49	0.84	10
Sep 26, 2025	Day	5.66	12.02	0.77	12
Sep 26, 2025	Night	9.02	12.02	0.98	12
Sep 27, 2025	Day	9.29	13.55	1.23	12
Sep 27, 2025	Night	1.31	13.55	1.27	12
Sep 28, 2025	Day	4.75	18.84	1.2	12
Sep 28, 2025	Night	10.47	18.84	1.14	12
Sep 29, 2025	Day	3.79	226.09	1.28	11.5
Sep 29, 2025	Night	15.62	226.09	0.93	11.5
Sep 30, 2025	Day	0.06	0	0.71	11.5
Sep 30, 2025	Night	2.77	0	0.32	11.5



January 21, 2026

Indiana Department of Environmental Management
Office of Air Quality
Indiana Government Center North
100 North Senate Avenue, Room 13W
Indianapolis, IN, 46204-2251

IN THE MATTER OF:
ORDER OF THE COMMISSIONER
PURSUANT TO IC 13-14-2-1
FOR U.S. MINERAL PRODUCTS COMPANY
(D/B/A ISOLATEK INTERNATIONAL)

Re: Quarterly Compliance Report : October 1st – December 31st, 2025
United States Mineral Products Company, D.B.A. Isolatek International
Permit Number 069-38295-00021
ID No. 069-00021

Cornerstone Environmental, Health, and Safety is contracted to complete and submit quarterly compliance reports on behalf of U.S. Mineral Products Company, d.b.a. Isolatek International.

Notice and Order of the Commissioner of the Department of Environmental Management dated February 12th, 2024. The reporting period commenced on the October 1st, 2025 and concluded on December 31st, 2025. SO₂ emissions calculated pursuant to the order for stack #1 (baghouse) which includes emissions from both Cupula Furnaces is a daily average of 106.22 lbs/hr and Stack #3 (screen house stack from both screenhouses) is a daily average of 0.54 lbs/hr. Total material throughput during this time frame was 10,789.69 tons for the quarter.

Please note the SO₂ emission factor used for the entirety of this reporting period is based upon the stack test conducted on April 16th, 2024. This emission factor will be used as well in future reports until a subsequent formal stack test is performed.

The facility was on holiday shutdown November 27th – 28th and December 22nd – December 31st.

The compliance reports are as follows:

- A report of the monthly average hourly SO₂ emissions in pounds per hour from Cupulas EU #1 and EU #2 and from the blow chambers EU #3 and EU #4.
- A report of the throughput of all input materials (coke, slag, and other feed material (e.g. feldspar)) in pounds per hour for each cupula (EU #1 and EU #2).
- A report of the throughput of the output materials (mineral wool fiber, fly ash, and slag waste) for a defined reported time period as shown in the report.

If you have questions or comments, please do not hesitate to contact me directly at (317) 418-9926 or mhollinger@corner-enviro.com, or Dustin Forney of Isolatek at dforney@isolatek.com.

Best regards,



Mathew Hollinger
Senior Environmental Project Manager

cc: Dustin Forney and Anthony Tomaro, Isolatek International

**INDIANA DEPARTMENT OF ENVIRONMENTAL MANAGEMENT
OFFICE OF AIR QUALITY
COMPLIANCE AND ENFORCEMENT BRANCH
PART 70 OPERATING PERMIT
CERTIFICATION**

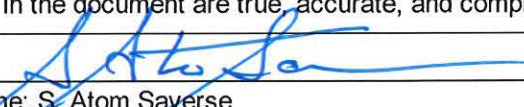
Source Name: USMPC Buyer, Incorporated (d/b/a Isolatek International)
Source Address: 701 North Broadway Street, Huntington, Indiana 46750
Part 70 Permit No.: T069-45112-00021

This certification shall be included when submitting monitoring, testing reports/results or other documents as required by this permit.

Please check what document is being certified:

- Annual Compliance Certification Letter
- Test Result (specify) _____
- Report (specify) Quarterly Compliance Report – SO2 Emissions _____
- Notification (specify) _____
- Affidavit (specify) _____
- Other (specify) _____

I certify that, based on information and belief formed after reasonable inquiry, the statements and information in the document are true, accurate, and complete.

Signature: 

Printed Name: S. Atom Saverse

Title/Position: Vice President of Operations

Phone: 973-481-4681

Date: 22 JANUARY 2026

INDIANA DEPARTMENT OF ENVIRONMENTAL MANAGEMENT
OFFICE OF AIR QUALITY
 COMPLIANCE SECTION
 SO₂ Emissions

Source Name: United States Mineral Products Company d.b.a. Isolatek International
 Source Address: 701 N Broadway, Huntington, IN 46750
 Mailing Address: 701 N Broadway, Huntington, IN 46750

Oct 1, 2025 TO Dec 31, 2025

Month	Emission Factor Stack #1 (lb SO2/ton)	Emission Factor Stack #3 (lb SO2/ton)	Material Input (tons/Month)	Hours of Operation (hrs)	Average Hourly SO2 Stack #1 (lb/hr)	Hourly SO2 Stack #1 Limit (lb/hr)	Average Hourly SO2 Stack #3 (lb/hr)	Hourly SO2 Stack #3 Limit (lb/hr)
Oct	13.8	0.07	4136.37	602	103.94	160	0.53	20
Nov	13.8	0.07	3670.74	489	113.55	160	0.58	20
Dec	13.8	0.07	2982.85	446	101.17	160	0.51	20

Emission Factor = Stack Test Result
 Stack #1 = Cupolas
 Stack #3 = Screen Houses

INDIANA DEPARTMENT OF ENVIRONMENTAL MANAGEMENT

OFFICE OF AIR QUALITY

COMPLIANCE SECTION

SO2 Emissions

Source Name: United States Mineral Products Company d.b.a. Isolatek International
Source Address: 701 N Broadway, Huntington, IN 46750
Mailing Address: 701 N Broadway, Huntington, IN 46750

Oct 1, 2025 TO Dec 31, 2025

Date	Shift	Wool (tons/hr)	Fly Ash (tons/hr)	Slag Waste (tons/hr)	Run Hours
10/1/2025	Night	2.96	0.041	1.96	4.3
10/2/2025	Day	2.26	0.041	0.88	7.6
10/2/2025	Night	2.17	0.041	1.12	9.4
10/3/2025	Day	2.35	0.041	0.63	10.7
10/3/2025	Night	2.71	0.041	0.82	11.2
10/4/2025	Day	2.64	0.041	1.05	8.1
10/4/2025	Night	0.68	0.041	2.27	1.8
10/5/2025	Day	2.61	0.041	2.02	7.6
10/5/2025	Night	1.86	0.041	1.11	7.9
10/6/2025	Day	2.81	0.041	1.13	10.0
10/6/2025	Night	2.55	0.041	1.02	11.5
10/7/2025	Day	2.72	0.041	0.89	11.1
10/7/2025	Night	2.47	0.041	1.03	8.3
10/9/2025	Night	2.63	0.041	0.83	7.0
10/10/2025	Day	2.39	0.041	0.86	10.2
10/10/2025	Night	1.76	0.041	0.61	9.5
10/11/2025	Day	2.77	0.041	0.91	6.9
10/11/2025	Night	2.73	0.041	0.74	11.4
10/12/2025	Day	3.09	0.041	1.15	10.2
10/12/2025	Night	2.82	0.041	1.03	10.2
10/13/2025	Day	3.34	0.041	1.03	7.1
10/13/2025	Night	2.61	0.041	0.79	11.8
10/14/2025	Day	2.80	0.041	1.10	8.5
10/14/2025	Night	1.87	0.041	0.34	12.0
10/15/2025	Day	4.81	0.041	2.61	0.5
10/15/2025	Night	2.78	0.041	1.02	8.9
10/16/2025	Day	2.90	0.041	0.73	6.6
10/16/2025	Night	2.64	0.041	1.10	9.6
10/17/2025	Day	3.12	0.041	0.67	11.4

10/17/2025	Night	2.80	0.041	0.59	8.5
10/18/2025	Day	2.80	0.041	0.71	12.0
10/18/2025	Night	2.38	0.041	0.68	12.0
10/19/2025	Day	2.49	0.041	1.03	8.5
10/19/2025	Night	2.97	0.041	0.89	6.0
10/20/2025	Day	3.08	0.041	1.05	6.7
10/20/2025	Night	2.77	0.041	0.91	11.8
10/21/2025	Day	2.64	0.041	0.56	11.8
10/21/2025	Night	2.82	0.041	0.31	11.7
10/22/2025	Day	3.01	0.041	0.73	9.1
10/22/2025	Night	2.71	0.041	0.83	4.5
10/23/2025	Day	0.00	0.000	0.00	0.0
10/23/2025	Night	2.28	0.041	1.16	6.3
10/24/2025	Day	3.25	0.041	0.34	11.3
10/24/2025	Night	2.90	0.041	1.51	11.0
10/25/2025	Day	3.10	0.041	1.19	10.6
10/25/2025	Night	2.85	0.041	1.09	9.7
10/26/2025	Day	2.84	0.041	0.77	11.5
10/26/2025	Night	2.93	0.041	1.27	7.4
10/27/2025	Day	3.01	0.041	0.73	10.5
10/27/2025	Night	2.36	0.041	1.36	7.2
10/28/2025	Day	2.81	0.041	1.15	9.3
10/28/2025	Night	3.10	0.041	0.86	9.0
10/29/2025	Night	3.18	0.041	1.47	5.0
10/30/2025	Day	2.84	0.041	0.86	9.5
10/30/2025	Night	2.83	0.041	0.92	10.8
10/31/2025	Day	2.81	0.041	0.69	11.8
10/31/2025	Night	2.77	0.041	0.70	11.8
11/1/2025	Day	2.40	0.043	1.52	9.1
11/1/2025	Night	3.00	0.043	0.17	6.6
11/2/2025	Day	2.38	0.043	0.76	6.0
11/2/2025	Night	2.42	0.043	0.59	6.0
11/3/2025	Day	1.26	0.043	0.68	11.6
11/3/2025	Night	2.86	0.043	0.75	11.6
11/4/2025	Day	2.94	0.043	0.94	10.8
11/4/2025	Night	2.73	0.043	0.72	8.7
11/5/2025	Night	3.32	0.043	2.22	2.5
11/6/2025	Day	3.29	0.043	1.09	10.9
11/6/2025	Night	2.54	0.043	1.87	7.2
11/7/2025	Day	3.07	0.043	0.71	10.0
11/7/2025	Night	2.31	0.043	1.54	4.0
11/8/2025	Day	3.28	0.043	1.09	11.7
11/8/2025	Night	4.73	0.043	2.68	5.9
11/9/2025	Day	3.37	0.043	1.38	6.9
11/9/2025	Night	2.96	0.043	1.08	9.3

11/10/2025 Day	2.84	0.043	1.25	10.3
11/10/2025 Night	2.83	0.043	1.39	10.4
11/11/2025 Day	3.09	0.043	1.17	11.5
11/11/2025 Night	3.23	0.043	0.69	9.1
11/12/2025 Day	2.38	0.043	2.01	1.5
11/12/2025 Night	0.00	0.000	0.00	0.0
11/13/2025 Day	0.00	0.000	0.00	0.0
11/13/2025 Night	0.00	0.000	0.00	0.0
11/14/2025 Day	3.62	0.043	2.89	1.0
11/14/2025 Night	2.92	0.043	0.69	10.1
11/15/2025 Day	2.94	0.043	1.05	10.2
11/15/2025 Night	2.40	0.043	1.85	8.0
11/16/2025 Day	2.68	0.042	0.97	9.2
11/16/2025 Night	2.69	0.042	1.07	9.7
11/17/2025 Day	2.87	0.042	1.31	10.3
11/17/2025 Night	2.66	0.042	0.98	11.6
11/18/2025 Day	2.41	0.042	0.99	10.3
11/18/2025 Night	3.16	0.042	0.17	9.4
11/19/2025 Day	0.00	0.000	0.00	0.0
11/19/2025 Night	1.61	0.042	2.10	6.4
11/20/2025 Day	2.62	0.042	0.39	12.0
11/20/2025 Night	2.46	0.042	0.93	11.2
11/21/2025 Day	2.60	0.042	0.47	12.0
11/21/2025 Night	2.24	0.042	1.07	6.4
11/22/2025 Day	2.35	0.042	0.68	10.9
11/22/2025 Night	2.86	0.042	0.63	11.6
11/23/2025 Day	2.73	0.042	0.88	11.5
11/23/2025 Night	2.78	0.042	0.80	11.8
11/24/2025 Day	2.71	0.042	1.04	9.5
11/24/2025 Night	2.86	0.042	0.62	11.8
11/25/2025 Day	2.81	0.042	0.96	11.7
11/25/2025 Night	1.84	0.042	1.02	4.6
12/1/2025 Day	3.18	0.027	1.77	4.9
12/1/2025 Night	2.46	0.027	1.05	8.8
12/2/2025 Day	2.79	0.027	2.06	3.4
12/2/2025 Night	2.68	0.027	0.80	11.5
12/3/2025 Day	2.63	0.027	1.06	8.3
12/3/2025 Night	2.83	0.027	0.84	10.9
12/4/2025 Day	2.87	0.027	0.77	11.5
12/4/2025 Night	2.16	0.027	2.38	8.0
12/5/2025 Day	3.24	0.027	0.78	11.9
12/5/2025 Night	2.02	0.027	3.01	4.5
12/6/2025 Day	2.99	0.027	1.03	10.5
12/6/2025 Night	2.53	0.027	0.71	11.6
12/7/2025 Day	2.54	0.027	0.87	11.8

12/7/2025 Night	2.81	0.027	0.92	11.7
12/8/2025 Day	2.72	0.027	1.05	9.6
12/8/2025 Night	2.59	0.027	0.65	11.7
12/9/2025 Day	2.55	0.027	0.78	12.0
12/9/2025 Night	2.56	0.027	1.03	7.4
12/10/2025 Night	2.70	0.027	1.25	7.2
12/11/2025 Day	2.63	0.027	1.10	9.3
12/11/2025 Night	2.60	0.027	0.78	11.3
12/12/2025 Day	2.63	0.027	0.82	11.6
12/12/2025 Night	2.84	0.027	0.77	11.5
12/13/2025 Day	3.02	0.027	0.65	5.4
12/13/2025 Night	2.51	0.027	1.14	5.8
12/14/2025 Day	2.64	0.027	0.87	6.0
12/14/2025 Night	2.26	0.027	0.75	5.9
12/15/2025 Day	2.27	0.027	0.86	4.3
12/16/2025 Day	3.10	0.033	1.87	1.3
12/16/2025 Night	2.31	0.033	1.39	5.9
12/17/2025 Day	2.14	0.033	0.96	7.5
12/17/2025 Night	2.05	0.033	1.03	5.9
12/18/2025 Day	2.50	0.033	0.97	6.0
12/18/2025 Night	3.24	0.033	0.90	6.4
12/19/2025 Day	2.69	0.033	1.16	6.8
12/19/2025 Night	2.55	0.033	0.96	11.3
12/20/2025 Day	2.61	0.033	0.83	11.8
12/20/2025 Night	2.61	0.033	0.75	10.7
12/21/2025 Day	2.60	0.033	1.04	9.3
12/21/2025 Night	2.52	0.033	0.71	9.7

INDIANA DEPARTMENT OF ENVIRONMENTAL MANAGEMENT

OFFICE OF AIR QUALITY

COMPLIANCE SECTION
SO2 Emissions

Source Name: United States Mineral Products Company d.b.a. Isolatek International
 Source Address: 701 N Broadway, Huntington, IN 46750
 Mailing Address: 701 N Broadway, Huntington, IN 46750

Oct 1, 2025 TO Dec 31, 2025

Date	Shift	Cupola	Coke (lbs/shift)	Slag (lbs/shift)	Feldspar (lbs/shift)	Other (lbs/shft)
Dec 22, 2025	Night	1	4157	19037	5205	0
Dec 22, 2025	Day	2	3632	4988	75	0
Dec 22, 2025	Night	2	4743	22188	5867	0
Dec 21, 2025	Day	1	10805	40854	10800	0
Dec 21, 2025	Night	1	14691	62013	16965	0
Dec 21, 2025	Day	2	14128	65419	17581	0
Dec 21, 2025	Night	2	14844	63542	17487	0
Dec 20, 2025	Day	1	14003	62576	17550	0
Dec 20, 2025	Night	1	13966	56100	16468	0
Dec 20, 2025	Day	2	14241	64124	17785	0
Dec 20, 2025	Night	2	14224	53542	14772	0
Dec 19, 2025	Day	1	15821	67800	19373	0
Dec 19, 2025	Night	1	16060	71758	20508	0
Dec 19, 2025	Day	2	3150	13306	3614	0
Dec 19, 2025	Night	2	6380	28077	7594	0
Dec 18, 2025	Night	1	5638	23592	6636	0
Dec 18, 2025	Day	2	14274	64972	18237	0
Dec 18, 2025	Night	2	16005	47952	13296	0
Dec 17, 2025	Day	1	11462	37409	10200	0
Dec 17, 2025	Night	1	9890	41753	11885	0
Dec 17, 2025	Day	2	9499	35750	9956	0
Dec 17, 2025	Night	2	6009	25854	6956	0
Dec 16, 2025	Day	1	8151	19871	5669	0
Dec 16, 2025	Night	1	7007	27862	7562	0
Dec 16, 2025	Day	2	3692	0	0	0
Dec 15, 2025	Day	1	11741	41438	11213	0

INDIANA DEPARTMENT OF ENVIRONMENTAL MANAGEMENT

OFFICE OF AIR QUALITY

COMPLIANCE SECTION
SO2 Emissions

Source Name: United States Mineral Products Company d.b.a. Isolatek International
 Source Address: 701 N Broadway, Huntington, IN 46750
 Mailing Address: 701 N Broadway, Huntington, IN 46750

Oct 1, 2025 TO Dec 31, 2025

Date	Shift	Cupola	Coke (lbs/shift)	Slag (lbs/shift)	Feldspar (lbs/shift)	Other (lbs/shft)
Dec 15, 2025	Night	1	10995	33134	8932	0
Dec 15, 2025	Day	2	2544	0	0	0
Dec 15, 2025	Night	2	2508	0	0	0
Dec 14, 2025	Day	1	14955	66583	18345	0
Dec 14, 2025	Night	1	13935	63365	17450	0
Dec 14, 2025	Day	2	3074	0	0	0
Dec 14, 2025	Night	2	7328	0	0	0
Dec 13, 2025	Day	1	13500	62773	18049	0
Dec 13, 2025	Night	1	15767	66620	18766	0
Dec 13, 2025	Day	2	585	0	0	0
Dec 13, 2025	Night	2	12006	31033	8697	0
Dec 12, 2025	Day	1	13206	54014	14571	0
Dec 12, 2025	Night	1	15393	61248	17758	0
Dec 12, 2025	Day	2	15952	73527	19899	0
Dec 12, 2025	Night	2	15405	65471	18832	0
Dec 11, 2025	Day	1	11251	47205	13431	0
Dec 11, 2025	Night	1	14669	60130	17518	0
Dec 11, 2025	Day	2	12843	60196	17064	0
Dec 11, 2025	Night	2	14982	66762	19164	0
Dec 10, 2025	Night	1	6110	13128	3970	0
Dec 10, 2025	Night	2	10262	27408	7720	0
Dec 9, 2025	Day	1	12910	53240	15289	0
Dec 9, 2025	Night	1	14098	51393	15226	0
Dec 9, 2025	Day	2	15460	72004	20696	0
Dec 9, 2025	Night	2	16597	72454	21056	0
Dec 8, 2025	Day	1	15056	63889	18720	0

INDIANA DEPARTMENT OF ENVIRONMENTAL MANAGEMENT

OFFICE OF AIR QUALITY

COMPLIANCE SECTION
SO2 Emissions

Source Name: United States Mineral Products Company d.b.a. Isolatek International
 Source Address: 701 N Broadway, Huntington, IN 46750
 Mailing Address: 701 N Broadway, Huntington, IN 46750

Oct 1, 2025 TO Dec 31, 2025

Date	Shift	Cupola	Coke (lbs/shift)	Slag (lbs/shift)	Feldspar (lbs/shift)	Other (lbs/shft)
Dec 8, 2025	Night	1	15072	61448	17763	0
Dec 8, 2025	Day	2	12469	49286	14304	0
Dec 8, 2025	Night	2	16312	68768	21509	0
Dec 7, 2025	Day	1	15040	53592	15630	0
Dec 7, 2025	Night	1	13340	59383	17366	0
Dec 7, 2025	Day	2	16503	72351	20571	0
Dec 7, 2025	Night	2	14519	64256	21135	0
Dec 6, 2025	Day	1	15745	70184	19820	0
Dec 6, 2025	Night	1	8476	26011	7169	0
Dec 6, 2025	Day	2	14064	60912	18467	0
Dec 6, 2025	Night	2	14207	56604	15919	0
Dec 5, 2025	Day	1	16209	69012	19622	0
Dec 5, 2025	Night	1	12909	46646	13216	0
Dec 5, 2025	Day	2	18825	80502	23150	0
Dec 5, 2025	Night	2	19386	72108	20384	0
Dec 4, 2025	Day	1	13294	52557	14170	0
Dec 4, 2025	Night	1	17010	62208	18394	0
Dec 4, 2025	Day	2	18286	78909	22519	0
Dec 4, 2025	Night	2	12803	42459	12001	0
Dec 3, 2025	Day	1	7271	16410	4744	0
Dec 3, 2025	Night	1	13948	53172	16380	0
Dec 3, 2025	Day	2	17737	77152	22364	0
Dec 3, 2025	Night	2	14908	67345	20837	0
Dec 2, 2025	Day	1	1806	3350	887	0
Dec 2, 2025	Night	1	7577	28777	8573	0
Dec 2, 2025	Day	2	14246	47003	15653	0

INDIANA DEPARTMENT OF ENVIRONMENTAL MANAGEMENT
OFFICE OF AIR QUALITY
 COMPLIANCE SECTION
 SO2 Emissions

Source Name: United States Mineral Products Company d.b.a. Isolatek International
 Source Address: 701 N Broadway, Huntington, IN 46750
 Mailing Address: 701 N Broadway, Huntington, IN 46750

Oct 1, 2025 TO Dec 31, 2025

Date	Shift	Cupola	Coke (lbs/shift)	Slag (lbs/shift)	Feldspar (lbs/shift)	Other (lbs/shft)
Dec 2, 2025	Night	2	17551	75140	21436	0
Dec 1, 2025	Day	1	7446	24484	7342	0
Dec 1, 2025	Night	1	4982	19016	5411	0
Dec 1, 2025	Day	2	13121	50730	15510	0
Dec 1, 2025	Night	2	8345	38059	10843	0
Nov 26, 2025	Day	1	1500	0	0	0
Nov 26, 2025	Day	2	1506	0	0	0
Nov 26, 2025	Night	2	1433	6524	1745	0
Nov 25, 2025	Day	1	14133	65323	19558	0
Nov 25, 2025	Night	1	8251	36228	10138	0
Nov 25, 2025	Day	2	15628	71941	20870	0
Nov 25, 2025	Night	2	14885	68810	19991	0
Nov 24, 2025	Day	1	11356	37503	10302	0
Nov 24, 2025	Night	1	13630	58250	16615	0
Nov 24, 2025	Day	2	16202	75220	21390	0
Nov 24, 2025	Night	2	15847	73074	21450	0
Nov 23, 2025	Day	1	15078	55049	15811	0
Nov 23, 2025	Night	1	15539	62440	17774	0
Nov 23, 2025	Day	2	16780	75630	21832	0
Nov 23, 2025	Night	2	15984	70882	20091	0
Nov 22, 2025	Day	1	14800	53039	15226	0
Nov 22, 2025	Night	1	10700	43091	12298	0
Nov 22, 2025	Day	2	16552	50594	14842	0
Nov 22, 2025	Night	2	10988	40802	11369	0
Nov 21, 2025	Day	1	12780	53805	15552	0
Nov 21, 2025	Night	1	14382	46560	13665	0

INDIANA DEPARTMENT OF ENVIRONMENTAL MANAGEMENT

OFFICE OF AIR QUALITY

COMPLIANCE SECTION
SO2 Emissions

Source Name: United States Mineral Products Company d.b.a. Isolatek International
 Source Address: 701 N Broadway, Huntington, IN 46750
 Mailing Address: 701 N Broadway, Huntington, IN 46750

Oct 1, 2025 TO Dec 31, 2025

Date	Shift	Cupola	Coke (lbs/shift)	Slag (lbs/shift)	Feldspar (lbs/shift)	Other (lbs/shft)
Nov 21, 2025	Day	2	13469	62036	17938	0
Nov 21, 2025	Night	2	13433	57021	16752	0
Nov 20, 2025	Day	1	12687	47263	13549	0
Nov 20, 2025	Night	1	13799	53108	15159	0
Nov 20, 2025	Day	2	14744	66854	19193	0
Nov 20, 2025	Night	2	10665	38541	11056	0
Nov 19, 2025	Day	1	999	0	0	0
Nov 19, 2025	Night	1	7504	26251	7413	0
Nov 19, 2025	Night	2	14340	52556	14749	0
Nov 18, 2025	Day	1	13185	61528	17590	0
Nov 18, 2025	Night	1	13366	59014	16739	0
Nov 18, 2025	Day	2	11570	49235	13977	0
Nov 18, 2025	Night	2	14735	68144	19288	0
Nov 17, 2025	Day	1	13734	54305	15112	0
Nov 17, 2025	Night	1	12744	55117	15472	0
Nov 17, 2025	Day	2	17158	81812	22586	0
Nov 17, 2025	Night	2	14711	68351	18878	0
Nov 16, 2025	Day	1	9542	39102	11020	0
Nov 16, 2025	Night	1	10590	49794	13779	0
Nov 16, 2025	Day	2	15925	67304	18987	0
Nov 16, 2025	Night	2	10841	52187	14144	0
Nov 15, 2025	Day	1	14667	60613	16609	0
Nov 15, 2025	Night	1	11219	41598	11284	0
Nov 15, 2025	Day	2	14934	68702	18923	0
Nov 15, 2025	Night	2	16159	71530	20075	0
Nov 14, 2025	Day	1	5079	16935	4750	0

INDIANA DEPARTMENT OF ENVIRONMENTAL MANAGEMENT
OFFICE OF AIR QUALITY
 COMPLIANCE SECTION
 SO2 Emissions

Source Name: United States Mineral Products Company d.b.a. Isolatek International
 Source Address: 701 N Broadway, Huntington, IN 46750
 Mailing Address: 701 N Broadway, Huntington, IN 46750

Oct 1, 2025 TO Dec 31, 2025

Date	Shift	Cupola	Coke (lbs/shift)	Slag (lbs/shift)	Feldspar (lbs/shift)	Other (lbs/shft)
Nov 14, 2025	Night	1	7451	33936	9134	0
Nov 14, 2025	Day	2	4778	3228	900	0
Nov 14, 2025	Night	2	6327	29145	8534	0
Nov 12, 2025	Day	1	7407	21135	6162	0
Nov 12, 2025	Night	1	8658	42335	13859	0
Nov 12, 2025	Night	2	3019	0	0	0
Nov 11, 2025	Day	1	18855	81836	24730	0
Nov 11, 2025	Night	1	17542	76981	23653	0
Nov 11, 2025	Day	2	17139	70469	20619	0
Nov 11, 2025	Night	2	15719	63916	17882	0
Nov 10, 2025	Day	1	16943	76852	23360	0
Nov 10, 2025	Night	1	14727	50759	15126	0
Nov 10, 2025	Day	2	16617	53919	15709	0
Nov 10, 2025	Night	2	16168	66375	19724	0
Nov 9, 2025	Day	1	4931	18574	7793	0
Nov 9, 2025	Night	1	17017	75725	22260	0
Nov 9, 2025	Day	2	17689	81474	23636	0
Nov 9, 2025	Night	2	12704	45553	13341	0
Nov 8, 2025	Day	1	16959	78484	24721	0
Nov 8, 2025	Night	1	12383	57078	16654	0
Nov 8, 2025	Day	2	17437	80242	23681	0
Nov 8, 2025	Night	2	11749	50806	14994	0
Nov 7, 2025	Day	1	10043	45581	13959	0
Nov 7, 2025	Night	1	4342	13016	3929	0
Nov 7, 2025	Day	2	15817	73333	22361	0
Nov 7, 2025	Night	2	14521	53732	16313	0

**INDIANA DEPARTMENT OF ENVIRONMENTAL MANAGEMENT
OFFICE OF AIR QUALITY**

COMPLIANCE SECTION
SO2 Emissions

Source Name: United States Mineral Products Company d.b.a. Isolatek International
 Source Address: 701 N Broadway, Huntington, IN 46750
 Mailing Address: 701 N Broadway, Huntington, IN 46750

Oct 1, 2025 TO Dec 31, 2025

Date	Shift	Cupola	Coke (lbs/shift)	Slag (lbs/shift)	Feldspar (lbs/shift)	Other (lbs/shft)
Nov 6, 2025	Day	1	14841	69726	20333	0
Nov 6, 2025	Night	1	10628	42139	13258	0
Nov 6, 2025	Day	2	16973	79542	23427	0
Nov 6, 2025	Night	2	13086	51768	15338	0
Nov 5, 2025	Night	1	3470	11447	3358	0
Nov 5, 2025	Night	2	4798	17890	5278	0
Nov 4, 2025	Day	1	14335	68362	20702	0
Nov 4, 2025	Night	1	15338	67389	22075	0
Nov 4, 2025	Day	2	13012	62167	18755	0
Nov 4, 2025	Night	2	16391	72266	20926	0
Nov 3, 2025	Day	1	6246	25300	7467	0
Nov 3, 2025	Night	1	5826	27926	7942	0
Nov 3, 2025	Day	2	12442	45874	13371	0
Nov 3, 2025	Night	2	13762	60869	17328	0
Nov 2, 2025	Day	2	12612	57550	16793	0
Nov 2, 2025	Night	2	16542	67533	19737	0
Nov 1, 2025	Day	1	14122	63525	18756	0
Nov 1, 2025	Night	1	11337	37130	10676	0
Nov 1, 2025	Day	2	10500	47874	14352	0
Nov 1, 2025	Night	2	14774	62711	18160	0
Oct 31, 2025	Day	1	13524	65997	19583	0
Oct 31, 2025	Night	1	14957	66106	18930	0
Oct 31, 2025	Day	2	15349	62646	18466	0
Oct 31, 2025	Night	2	15551	53278	17199	0
Oct 30, 2025	Day	1	14296	67481	20346	0
Oct 30, 2025	Night	1	16063	71651	20728	0

INDIANA DEPARTMENT OF ENVIRONMENTAL MANAGEMENT
OFFICE OF AIR QUALITY
 COMPLIANCE SECTION
 SO2 Emissions

Source Name: United States Mineral Products Company d.b.a. Isolatek International
 Source Address: 701 N Broadway, Huntington, IN 46750
 Mailing Address: 701 N Broadway, Huntington, IN 46750

Oct 1, 2025 TO Dec 31, 2025

Date	Shift	Cupola	Coke (lbs/shift)	Slag (lbs/shift)	Feldspar (lbs/shift)	Other (lbs/shft)
Oct 30, 2025	Day	2	9452	42643	12202	0
Oct 30, 2025	Night	2	8612	32275	9300	0
Oct 29, 2025	Night	1	14950	57354	16854	0
Oct 29, 2025	Night	2	5159	9858	2777	0
Oct 28, 2025	Day	1	9690	44405	12464	0
Oct 28, 2025	Night	1	14447	65050	18589	0
Oct 28, 2025	Day	2	15187	69353	21791	0
Oct 28, 2025	Night	2	14204	62643	20693	0
Oct 27, 2025	Day	1	14893	71068	20369	0
Oct 27, 2025	Night	1	7440	25554	7276	0
Oct 27, 2025	Day	2	10767	52739	15253	0
Oct 27, 2025	Night	2	11942	43836	12790	0
Oct 26, 2025	Day	1	13207	64141	18656	0
Oct 26, 2025	Night	1	11138	48664	15464	0
Oct 26, 2025	Day	2	14011	65798	18935	0
Oct 26, 2025	Night	2	13529	64224	19513	0
Oct 25, 2025	Day	1	16807	80784	23555	0
Oct 25, 2025	Night	1	14766	71023	20687	0
Oct 25, 2025	Day	2	12407	59227	17709	0
Oct 25, 2025	Night	2	15871	75889	22051	0
Oct 24, 2025	Day	1	13895	65940	19538	0
Oct 24, 2025	Night	1	13924	61816	17933	0
Oct 24, 2025	Day	2	13023	61150	18018	0
Oct 24, 2025	Night	2	13698	62002	17886	0
Oct 23, 2025	Day	1	1474	0	0	0
Oct 23, 2025	Night	1	3747	11517	3381	0

INDIANA DEPARTMENT OF ENVIRONMENTAL MANAGEMENT
OFFICE OF AIR QUALITY
 COMPLIANCE SECTION
 SO2 Emissions

Source Name: United States Mineral Products Company d.b.a. Isolatek International
 Source Address: 701 N Broadway, Huntington, IN 46750
 Mailing Address: 701 N Broadway, Huntington, IN 46750

Oct 1, 2025 TO Dec 31, 2025

Date	Shift	Cupola	Coke (lbs/shift)	Slag (lbs/shift)	Feldspar (lbs/shift)	Other (lbs/shft)
Oct 23, 2025	Day	2	1487	0	0	0
Oct 23, 2025	Night	2	5102	18185	5179	0
Oct 22, 2025	Day	1	7228	36407	10219	0
Oct 22, 2025	Night	1	6807	31558	9249	0
Oct 22, 2025	Day	2	14116	71145	20093	0
Oct 22, 2025	Night	2	13267	66454	18741	0
Oct 21, 2025	Day	1	13960	61107	17695	0
Oct 21, 2025	Night	1	12746	58099	16438	0
Oct 21, 2025	Day	2	13449	57749	16308	0
Oct 21, 2025	Night	2	13475	63871	18071	0
Oct 20, 2025	Day	1	13691	65681	18791	0
Oct 20, 2025	Night	1	15448	74123	21217	0
Oct 20, 2025	Day	2	6315	19750	5680	0
Oct 20, 2025	Night	2	6454	29632	8434	0
Oct 19, 2025	Day	1	14474	68929	20314	0
Oct 19, 2025	Night	1	13059	62690	18358	0
Oct 19, 2025	Day	2	11124	24622	7288	0
Oct 19, 2025	Night	2	6452	31217	9109	0
Oct 18, 2025	Day	1	14179	67729	19467	0
Oct 18, 2025	Night	1	9888	47828	13797	0
Oct 18, 2025	Day	2	13439	64393	18464	0
Oct 18, 2025	Night	2	12133	57744	16620	0
Oct 17, 2025	Day	1	13742	67560	19477	0
Oct 17, 2025	Night	1	10199	41338	12076	0
Oct 17, 2025	Day	2	13784	67515	19804	0
Oct 17, 2025	Night	2	14283	56047	16205	0

INDIANA DEPARTMENT OF ENVIRONMENTAL MANAGEMENT
OFFICE OF AIR QUALITY
 COMPLIANCE SECTION
 SO2 Emissions

Source Name: United States Mineral Products Company d.b.a. Isolatek International
 Source Address: 701 N Broadway, Huntington, IN 46750
 Mailing Address: 701 N Broadway, Huntington, IN 46750

Oct 1, 2025 TO Dec 31, 2025

Date	Shift	Cupola	Coke (lbs/shift)	Slag (lbs/shift)	Feldspar (lbs/shift)	Other (lbs/shft)
Oct 16, 2025	Day	1	7782	37979	10992	0
Oct 16, 2025	Night	1	11759	40326	11739	0
Oct 16, 2025	Day	2	9111	37824	10900	0
Oct 16, 2025	Night	2	15050	60900	17827	0
Oct 15, 2025	Day	1	487	0	0	0
Oct 15, 2025	Night	1	12287	42684	12392	0
Oct 15, 2025	Day	2	2382	11565	3350	0
Oct 15, 2025	Night	2	12425	46086	13815	0
Oct 14, 2025	Day	1	10945	28943	8420	0
Oct 14, 2025	Night	1	13124	56205	16177	0
Oct 14, 2025	Day	2	15322	74492	21411	0
Oct 14, 2025	Night	2	12868	62844	18016	0
Oct 13, 2025	Day	1	14244	69035	21986	0
Oct 13, 2025	Night	1	14115	66106	19727	0
Oct 13, 2025	Day	2	5457	26363	7600	0
Oct 13, 2025	Night	2	12593	56058	16169	0
Oct 12, 2025	Day	1	13750	66606	20283	0
Oct 12, 2025	Night	1	13894	64238	19912	0
Oct 12, 2025	Day	2	14150	68320	19300	0
Oct 12, 2025	Night	2	13092	62997	18791	0
Oct 11, 2025	Day	1	12820	61178	17512	0
Oct 11, 2025	Night	1	12825	42134	12308	0
Oct 11, 2025	Day	2	6543	18273	5249	0
Oct 11, 2025	Night	2	10026	42159	12262	0
Oct 10, 2025	Day	1	10167	47148	13791	0
Oct 10, 2025	Night	1	12443	55391	16108	0

INDIANA DEPARTMENT OF ENVIRONMENTAL MANAGEMENT
OFFICE OF AIR QUALITY
 COMPLIANCE SECTION
 SO2 Emissions

Source Name: United States Mineral Products Company d.b.a. Isolatek International
 Source Address: 701 N Broadway, Huntington, IN 46750
 Mailing Address: 701 N Broadway, Huntington, IN 46750

Oct 1, 2025 TO Dec 31, 2025

Date	Shift	Cupola	Coke (lbs/shift)	Slag (lbs/shift)	Feldspar (lbs/shift)	Other (lbs/shft)
Oct 10, 2025	Day	2	12434	55391	16134	0
Oct 10, 2025	Night	2	12219	35471	10511	0
Oct 9, 2025	Day	1	2977	0	0	0
Oct 9, 2025	Night	1	1374	6605	1871	0
Oct 9, 2025	Day	2	2973	0	0	0
Oct 9, 2025	Night	2	4723	22996	6495	0
Oct 8, 2025	Night	1	2383	11402	3365	0
Oct 8, 2025	Night	2	3288	16422	4764	0
Oct 7, 2025	Day	1	12979	62276	18056	0
Oct 7, 2025	Night	1	13582	64596	18610	0
Oct 7, 2025	Day	2	13994	63764	18634	0
Oct 7, 2025	Night	2	14108	66950	19502	0
Oct 6, 2025	Day	1	12639	55096	18665	0
Oct 6, 2025	Night	1	9870	33522	9634	0
Oct 6, 2025	Day	2	14462	66531	19137	0
Oct 6, 2025	Night	2	15228	67799	19609	0
Oct 5, 2025	Day	1	12191	56539	16534	0
Oct 5, 2025	Night	1	4341	19369	5780	0
Oct 5, 2025	Day	2	11922	53354	15876	0
Oct 5, 2025	Night	2	8075	29371	8572	0
Oct 4, 2025	Day	1	12015	51731	17185	0
Oct 4, 2025	Night	1	7461	34360	9880	0
Oct 4, 2025	Day	2	9826	38769	12796	0
Oct 4, 2025	Night	2	7785	32529	9619	0
Oct 3, 2025	Day	1	12346	49553	15501	0
Oct 3, 2025	Night	1	13304	56175	17039	0

INDIANA DEPARTMENT OF ENVIRONMENTAL MANAGEMENT

OFFICE OF AIR QUALITY

COMPLIANCE SECTION
SO2 Emissions

Source Name: United States Mineral Products Company d.b.a. Isolatek International
Source Address: 701 N Broadway, Huntington, IN 46750
Mailing Address: 701 N Broadway, Huntington, IN 46750

Oct 1, 2025 TO Dec 31, 2025

Date	Shift	Cupola	Coke (lbs/shift)	Slag (lbs/shift)	Feldspar (lbs/shift)	Other (lbs/shft)
Oct 3, 2025	Day	2	11928	50182	14678	0
Oct 3, 2025	Night	2	15339	59502	19935	0
Oct 2, 2025	Day	1	8583	25130	7035	0
Oct 2, 2025	Night	1	6724	27717	7759	0
Oct 2, 2025	Day	2	10510	50319	14532	0
Oct 2, 2025	Night	2	12215	54401	16347	0
Oct 1, 2025	Night	1	3054	0	0	0
Oct 1, 2025	Night	2	4484	21108	6232	0