



Indiana Department of Environmental Management

*Protecting Hoosiers and Our Environment Since 1986*



# Pollution Prevention Lunch and Learn

Parts Washers

03.19. 2026





# Pollution Prevention Team

Katya Drake

317-495-9348

[p2@idem.in.gov](mailto:p2@idem.in.gov)

Pollution Prevention Program Mgr



Julie L Rhodes

317-233-4477

[jlrhodes@idem.in.gov](mailto:jlrhodes@idem.in.gov)

Pollution Prevention and  
Compliance Assist Section Chief

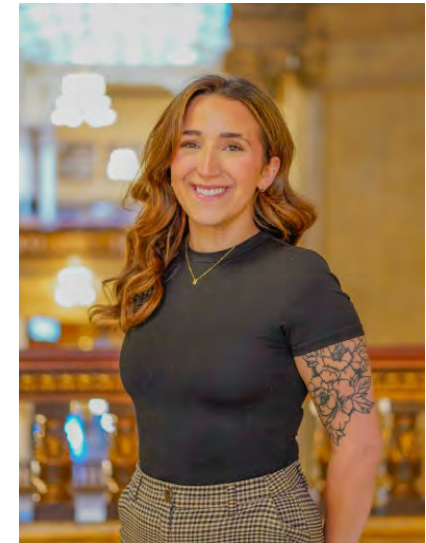


Samantha Nunnery

317-233-0572

[snunnery@idem.in.gov](mailto:snunnery@idem.in.gov)

Small Business Regulatory  
Coordinator / CTAP

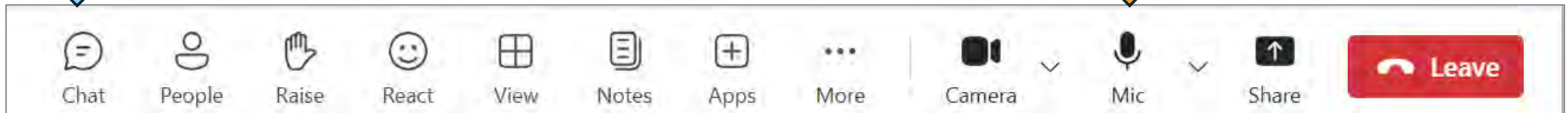
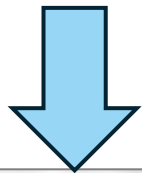




# Housekeeping Items

Stay muted throughout the webinar.

Post your questions to the chat to be answered during Q&A.





# Today's Agenda

- Parts Washer Video
- Additional Materials Preview
- Compliance and Technical Assistance Presentation
- Q&A Session
- P2 Peers Program
- Conclusion and Survey





# Parts Washer Resources



## Pollution Prevention & Parts Washers

### Information Sheet



#### Background

Parts washers are machines that use cleaning solutions to remove grit, grime, oil, paint, and other residues left on parts after production. Parts washers management can play a role in the overall cleanliness and safety in manufacturing. Best management practices (BMPs) can help reduce the air emissions, wastewater, and hazardous waste generated while increasing efficiency and equipment life.

#### Cleaner Options

There are two types of cleaning solutions used in parts washers:

- **Solvent cleaners** are composed of pure chemicals that dissolve any leftover residues or substances through a chemical process. Solvents often include mineral spirits, alcohol, chlorine, and other potentially hazardous chemicals.
- **Aqueous cleaners**, also called water-based cleaners, are composed primarily of water and utilize heat, pressurized water, soap, and agitation to break up any leftover residues or substances.

Consider solvents with low Volatile Organic Compounds (VOCs) emissions.

Cleaning detergents and solvents are often hazardous and can be harmful to worker health and the environment because they can emit volatile organic compounds (VOCs); can be combustible; and can threaten soil and water quality if not stored, managed and disposed of properly. Washers that use solvents may also require more frequent and costly services. Water- or semi-water-based cleaners:

- Are non-combustible;
- Reduce or eliminate a source of harmful chemicals and VOCs in the workplace;
- Are more cost effective and efficient;
- Are safer long-term choices;

Indiana Pollution Prevention Toolkit

Indiana Department of Environmental Management

- Reduce the cost of chemical purchases; and
- Make disposal of wastewater less costly and more straightforward.

Always review SDS for VOC (Section 15), flash point (Section 9), PPE, and disposal instructions. Flash point <140°F may trigger ignitability under 40 CFR 261.21.

While water-based solutions always offer a better P2 solution, there are instances when solvent-based solutions will be necessary, depending on factors such as part size, shape, material types and other considerations.

#### Best Management Practices

##### Before parts washing:

- **Only wash parts when necessary:** Some parts may not need to be washed as frequently as others. Avoiding unnecessary washing of parts reduces solution waste and decreases the amount of solution purchased and wastewater generated.
- **Only change cleaning solutions when necessary:** Don't change cleaning solution solely on a scheduled basis, or color. Rather, change it when the solution no longer adequately cleans parts. Constant changing of solutions can lead to excess waste, and wasted solution.



A commonly used drum-mounted parts washer.

The actions outlined do not replace or ensure compliance with regulatory standards set by the Indiana Department of Environmental Management (IDEM). If regulatory or compliance assistance is needed, refer to IDEM's Compliance and Technical Assistance Program (CTAP).



## Pollution Prevention & Parts Washers

### Checklist



#### Background

This checklist serves as a resource for implementing the best management practices for parts washers. Implementing these management practices will increase efficiency and product lifespan and reduce equipment failure, wastewater, and hazardous waste to save your business money and improve environmental impact.

#### Before parts washing:

- ✓ Switch to aqueous/water-based cleaning solutions
  - Consider solvents with low Volatile Organic Compounds (VOCs) emissions.
- ✓ Only wash parts when necessary
  - Determine if parts need to be cleaned
- ✓ Only change cleaning solution when necessary
  - Change based on cleaning ability, not color
- ✓ Batch parts to reduce cycles
- ✓ Avoid overloading the tanks



Parts with dirt, oil and other residue should be cleaned in a parts washer.

#### Pre-cleaning parts

Reusable absorbents like rags, wipes and towels could be washed in-house or through a washing service to reduce waste from single use absorbents.

See Title 326 Indiana Administrative Code (IAC) 8-3-2 for information on the regulatory requirements for parts washing.

### Parts Washer Regulatory Requirements

Title 326 Indiana Administrative Code (IAC) requires that the owner or operator of parts washers comply with the following:

- 1) Close the parts washer cover whenever parts are not being handled in the parts washer.
- 2) Drain cleaned parts for at least fifteen (15) seconds or until dripping ceases.
- 3) Store waste solvent only in closed containers.
- 4) Prohibit the disposal or transfer of waste solvent in a manner that would allow greater than twenty percent (20%) of the waste solvent by weight to evaporate into the atmosphere.

The actions outlined do not replace or ensure compliance with regulatory standards set by the Indiana Department of Environmental Management (IDEM). If regulatory or compliance assistance is needed, refer to IDEM's Compliance and Technical Assistance Program (CTAP).

Indiana Pollution Prevention Toolkit

Indiana Department of Environmental Management

## Parts Washer Regulatory Requirements

Title 326 Indiana Administrative Code (IAC) requires that the owner or operator of parts washers comply with the following:

- 1) Close the parts washer cover whenever parts are not being handled in the parts washer.
- 2) Drain cleaned parts for at least fifteen (15) seconds or until dripping ceases.
- 3) Store waste solvent only in closed containers.
- 4) Prohibit the disposal or transfer of waste solvent in a manner that would allow greater than twenty percent (20%) of the waste solvent by weight to evaporate into the atmosphere.

\*This sign must be visible near parts washers.



For more information on pollution prevention strategies, visit [idem.in.gov/prevention](http://idem.in.gov/prevention).

Pollution prevention guidance for businesses



**IDEM**



**CTAP**

Compliance and Technical  
Assistance Program

Indiana Department of Environmental Management

---

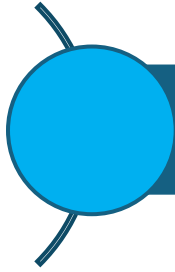
*Helping Indiana businesses one step at a time*



## Compliance and Technical Assistance (CTAP) Staff



Indiana Department of Environmental Management  
Office of Program Support  
Compliance and Technical Assistance Program



# Free and Confidential

CTAP services are available to all sectors  
of Indiana's regulated community at  
**NO COST!**

CTAP offers environmental regulatory assistance to  
Indiana businesses and organizations of **ALL** sizes and  
types including:

- Existing facilities with legacy issues.
- New companies looking to locate in Indiana.
- Government agencies.
- Trade associations, industry groups, environmental consultants, and other interested stakeholders.



# Non-Regulatory

CTAP staff are **NOT** regulators and do not have regulatory authority to issue violations, permits, fees, fines, or take enforcement actions.

Those who receive CTAP services will **NOT** be penalized for reporting relevant environmental information to CTAP when requesting assistance.



# CTAP Services

CTAP Hotline  
and Online  
Portal

Site  
Assessments

Training

Online  
Resources

## Contact CTAP to:

- Receive timely assistance with interpreting a rule or permit requirement.
- Determine what steps are needed to obtain a permit to operate or modify processes.
- Ask general environmental regulatory or compliance questions
- Request a site assessment.

Submit a confidential request via CTAP's online portal:

[portal.idem.IN.gov](http://portal.idem.IN.gov).

Or call our hotline: 317-232-8172 or 800-988-7901



# CTAP Services

## Site assessments

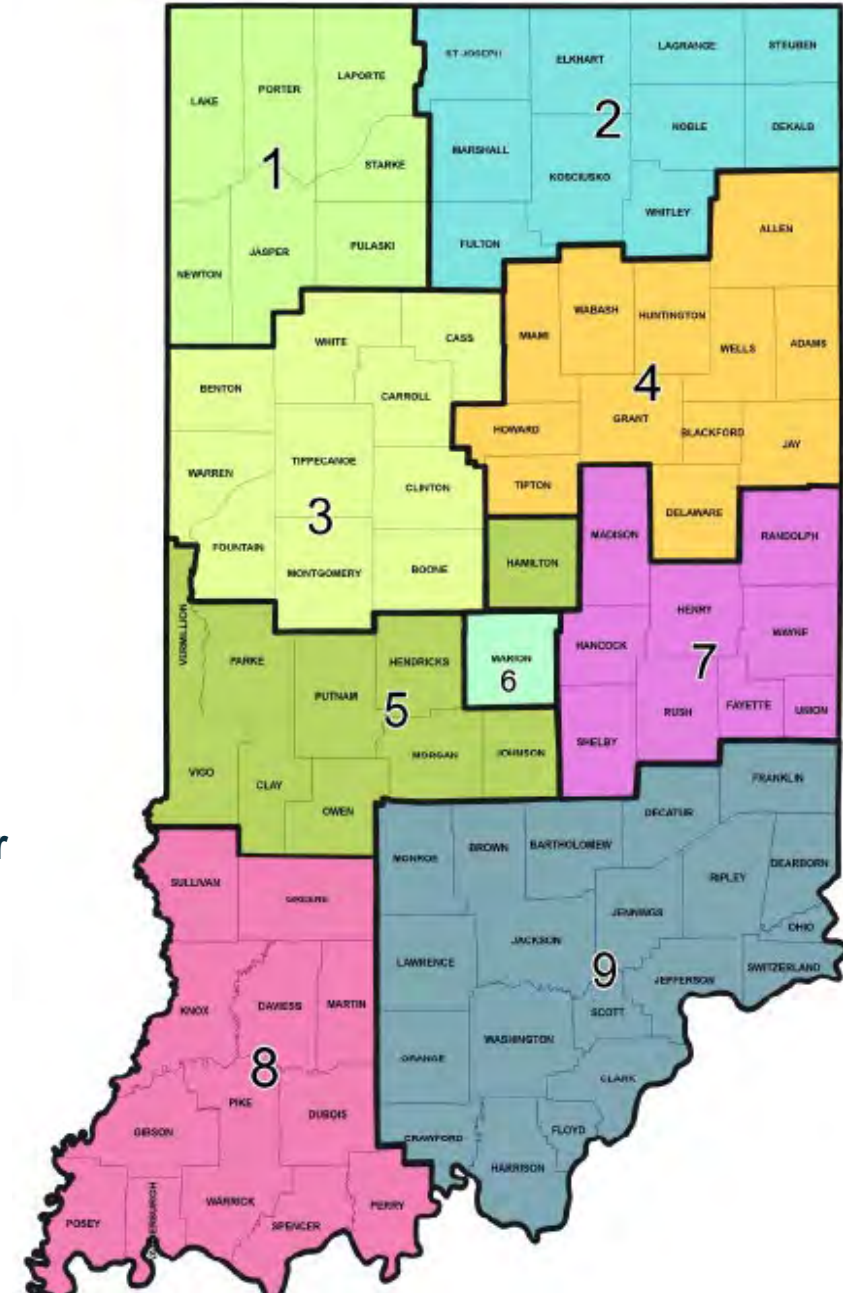
A site assessment is a free on-site consultation to observe and evaluate operations and determine environmental regulatory obligations, current compliance status, and identify potential pollution prevention opportunities.

CTAP staff can help troubleshoot a particular process or regulation or conduct an entire facility review. CTAP site assessments may be in-person or virtual.



# CTAP Staff

- **Northwest Regional Office:**
  - 1 - Malorie Medellin
- **Northern Regional Office:**
  - 2 – Hannah Hack
- **Indianapolis Central Office:**
  - 3 – Mark Stoddard
  - 4 – Leigh Anne Harvey
  - 5 – Chrystal Wagner
  - 6 – Hani Sharaya
- **CTAP Small Business Regulatory Coordinator**
  - 7 - Samantha Nunnery
- **Southwest Regional Office:**
  - 8 - Tammy Haug
- **Southeast Regional Office:**
  - 9 - Susan Raisor



# How to Contact

- **Confidential online portal:**  
[portal.idem.IN.gov](http://portal.idem.IN.gov)
- **Toll-free hotline:**
  - 800-988-7901
  - 317-232-8172
- **Website:**
  - [idem.IN.gov/ctap](http://idem.IN.gov/ctap)
- **Email:**
  - [ctap@idem.in.gov](mailto:ctap@idem.in.gov)



[ SCAN CODE for  
Confidential Online Portal ]



# Work Practices for Cold Cleaners

- **Equip the degreaser with a cover**
- **Equip the degreaser with a device for draining cleaned parts**
- **Close the degreaser cover whenever parts are not being handled in the degreaser**
- **Drain cleaned parts for at least 15 seconds or until dripping ceases**



# **Work Practices for Cold Cleaners, con't**

- **Provide a permanent, conspicuous label that lists the operating requirements**
- **Store waste solvent only in closed containers**
- **Manage solvent so no more than 20% of waste solvent (by weight) evaporates**

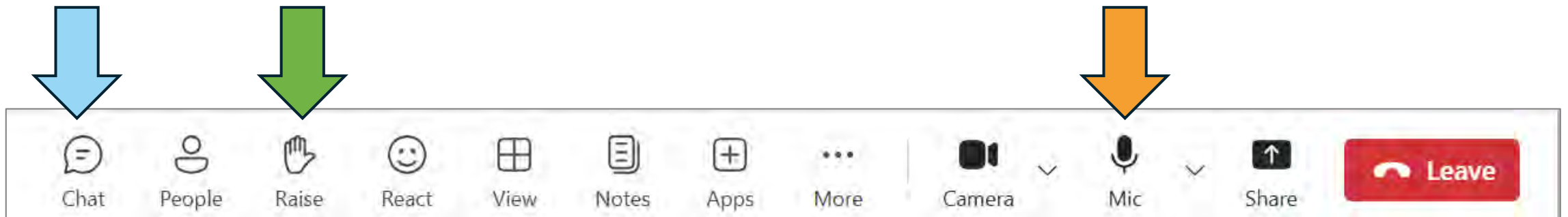
**\* Heated degreasers, vapor degreasers and conveyORIZED degreasers have additional work practice requirements (see 326 IAC 8-3)**



## Q&A Session

Please ask any questions about detecting and fixing air compressor leaks in the Chat.

If you want to unmute and ask a question, raise your hand and unmute your mic when called on.



*\*Confidential compliance questions should be sent privately to our CTAP representative.*





# P2 Peers Pilot Program

- Goals
  - Pilot Program
  - Collaborative effort between Partners and external businesses
  - To assist external business in pollution prevention/sustainability efforts
- Next Steps
  - Katya Drake at [p2@idem.IN.gov](mailto:p2@idem.IN.gov)





# Please give us feedback!



Pollution Prevention Questions:

Katya Drake

317-495-9348

[p2@idem.in.gov](mailto:p2@idem.in.gov)

Pollution Prevention Program Manager

Compliance Assistance Questions:

Samantha Nunnery

317-233-0572

[snunnery@idem.in.gov](mailto:snunnery@idem.in.gov)

Small Business Regulatory Coordinator





# Thank you for joining us for our first P2 Lunch and Learn!

Additional materials to be added to the P2 Toolkit website and emailed to you by 03/20/26.  
<https://www.in.gov/idem/prevention/pollution-prevention-toolkit/>

Be on the lookout for additional P2 Lunch and Learns!

Pollution Prevention Questions:

Katya Drake

317-495-9348

[p2@idem.in.gov](mailto:p2@idem.in.gov)

Pollution Prevention Program Manager

Compliance Assistance Questions:

Samantha Nunnery

317-233-0572

[snunnery@idem.in.gov](mailto:snunnery@idem.in.gov)

Small Business Regulatory Coordinator

