

# Partners for Pollution Prevention Updates



**December 10, 2021**



Thank you for hosting!



**PURDUE**  
**UNIVERSITY®**

Environmental and  
Ecological Engineering

and  
Partners Executive  
Committee



# Partners Executive Committee

## **Elected Officers**

Executive Director - Ben McKnight

Assistant Director - Ron Rothgerber

Treasurer - Krista McKenna (interim)

## **Members**

Kristen Belcredi

Jennifer Collins

Teresa Colson

Alan J. Resnik

Kevin Conkright

Mike Foster

Aunna Huber Fadness

Daniel Stevens

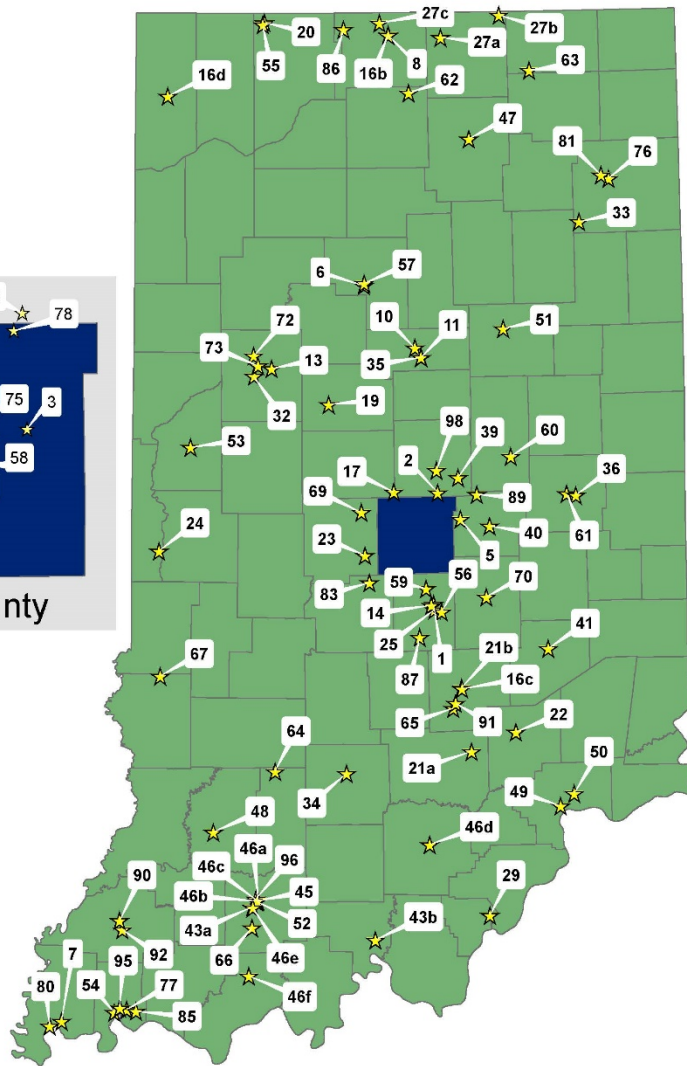
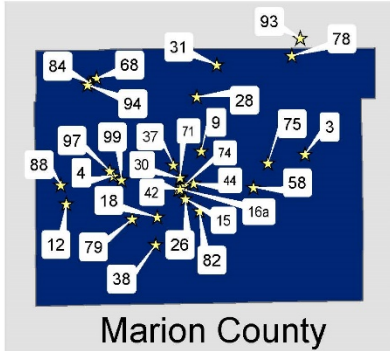
Wendy Krause

Lynn Partridge (consultant)

Laura Groom

Margaret Whelton

Jean Fix



This map is intended to serve as an aid in graphic representation only. This information is not warranted for accuracy or other purposes.

Mapped By: Erin Ignas, Information Services | Office of Chief of Staff  
Last Revised: 09/10/21

Sources:  
Partners for Pollution Prevention list is maintained by the Pollution Prevention and Compliance Assistance Section in the Office of Program Support  
Data - Obtained from the State of Indiana Geographical Information Office Library  
([www.indianamap.org](http://www.indianamap.org))  
Map Projection: UTM Zone 16 N Map Datum: NAD83

# Membership

## 101 Current members

Current members may be found online at  
<https://www.in.gov/idem/partnerships/partners-for-pollution-prevention/membership-list/>

Not yet a member?

Applications are available online at  
<https://www.in.gov/idem/5157.htm> or  
by emailing [partners@idem.IN.gov](mailto:partners@idem.IN.gov)



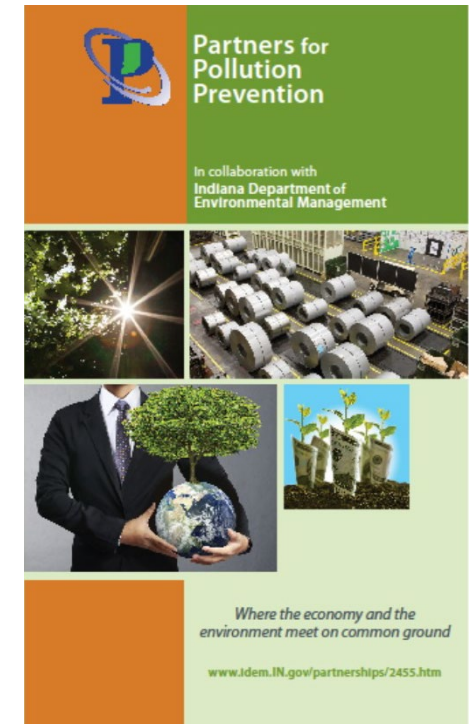
# Membership

- Membership is free and voluntary
- Applicants must commit to the Partners Pledge to be inducted into the program
- Contingent on having and maintaining a standard of environmental compliance
- Each Partner is required to complete an Annual Partners Recertification (APR) report to retain membership

# Marketing

**Please help us grow this partnership by:**

- Joining the LinkedIn group: <https://www.linkedin.com/groups/13573197>
- Inviting your business colleagues from other companies to attend meetings and join the group
- Distributing Partners materials at conferences or meetings that you may attend - A Partners for Pollution Prevention brochure is available for download at <https://www.in.gov/idem/partnerships/partners-for-pollution-prevention/about-partners/>





# Partners New Member Induction

Midwestern Pet Foods, Inc.  
Evansville, IN



*Accepting on behalf of Midwestern Pet Foods, Inc.:*  
Lucas Dobbs, Occupational Safety & Environmental Manager



# SAVE THE DATES!

## Quarterly Meetings

Date	Host	Location
Spring 2022	TBD	
Summer 2022	TBD	
P2 Conference 2022	September 21	Marriott Keystone Crossing

Is your company interested in hosting a quarterly meeting?

Contact [partners@idem.IN.gov](mailto:partners@idem.IN.gov)





Thank you again for hosting us

*Thank You!*



**PURDUE  
UNIVERSITY®**

Environmental and  
Ecological Engineering

and  
Partners Executive Committee