

# SHARE SOME SPACE



Community Pollinator Project

**IN 2014 USDA ISSUED  
REPORTS/STUDIES ABOUT THE  
NATIONAL CONCERN OF  
DECLINING POLLINATOR POPULATIONS!!!.**

**A NATIONAL CONCERN MEANS OF SEVERAL STATES  
IF NOT ALL OF THEM**



# Who are these pollinators?

European Honey Bees & Native Bees are on the decline





**MONARCH BUTTERFLY MAY GO ON THE  
ENDANGERED SPECIES LIST**



# THE RUSTY PATCHED BUMBLE BEE IS NOW ON THE ENDANGERED SPECIES LIST.



Some bee species have had a 70% decline in mortality over the past 2 years



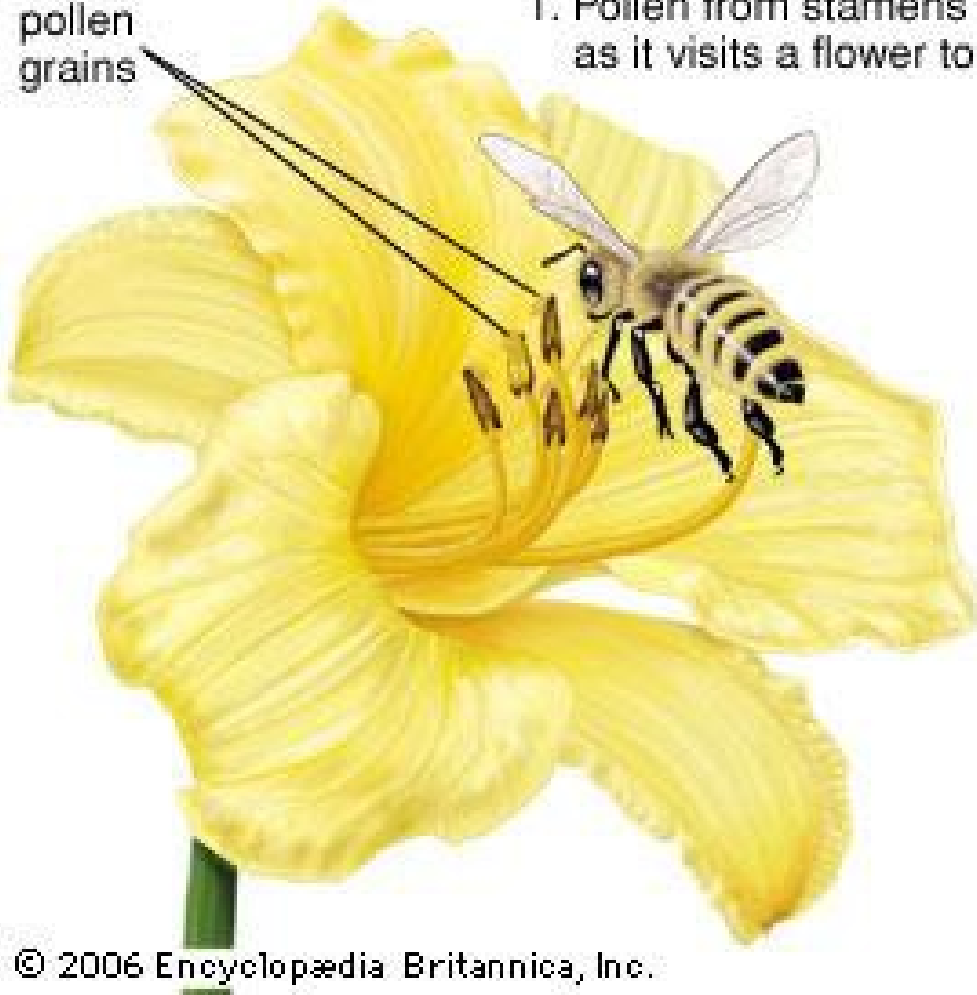


**OK, BUT WHY SHOULD I CARE?**

## Cross-pollination

pollen  
grains

1. Pollen from stamens sticks to a bee as it visits a flower to collect food.



2. The bee travels to another plant of the same type.

3. Pollen on the bee sticks to a pistil of a flower on the other plant.

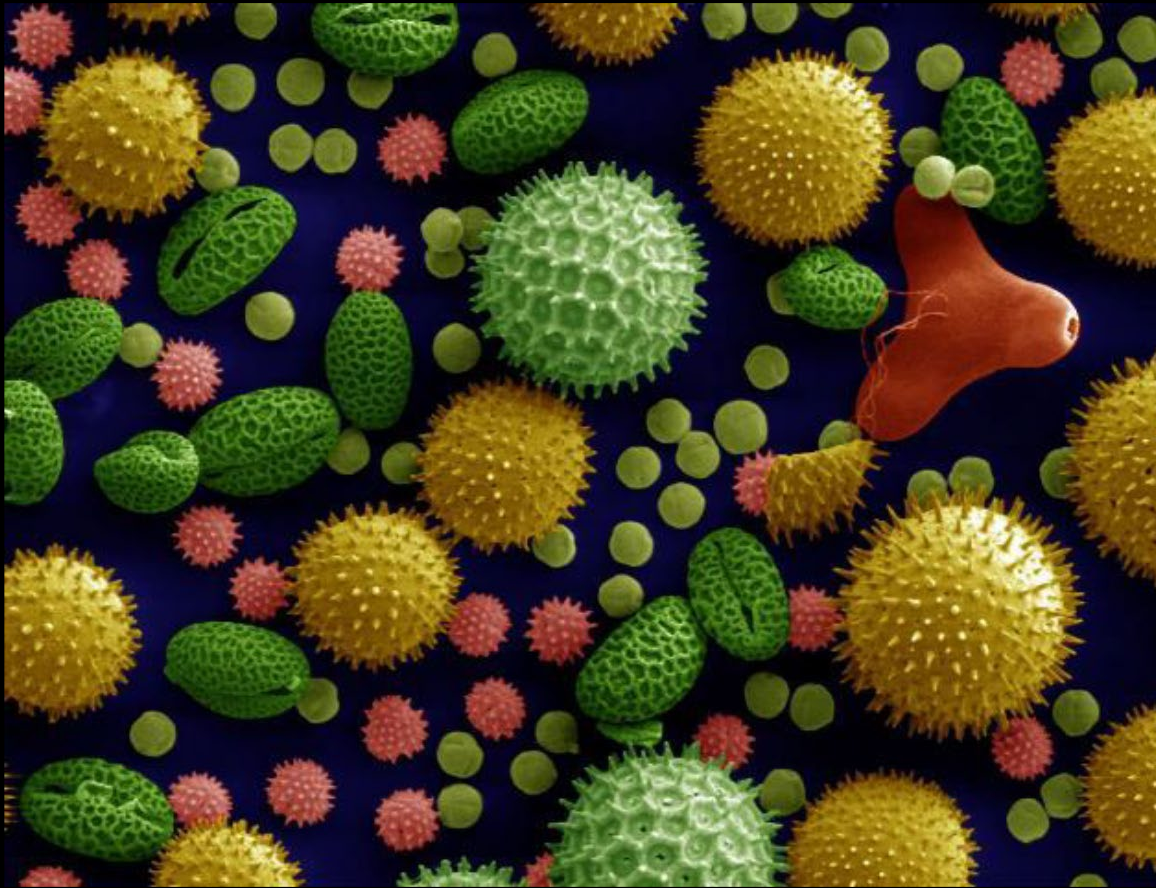


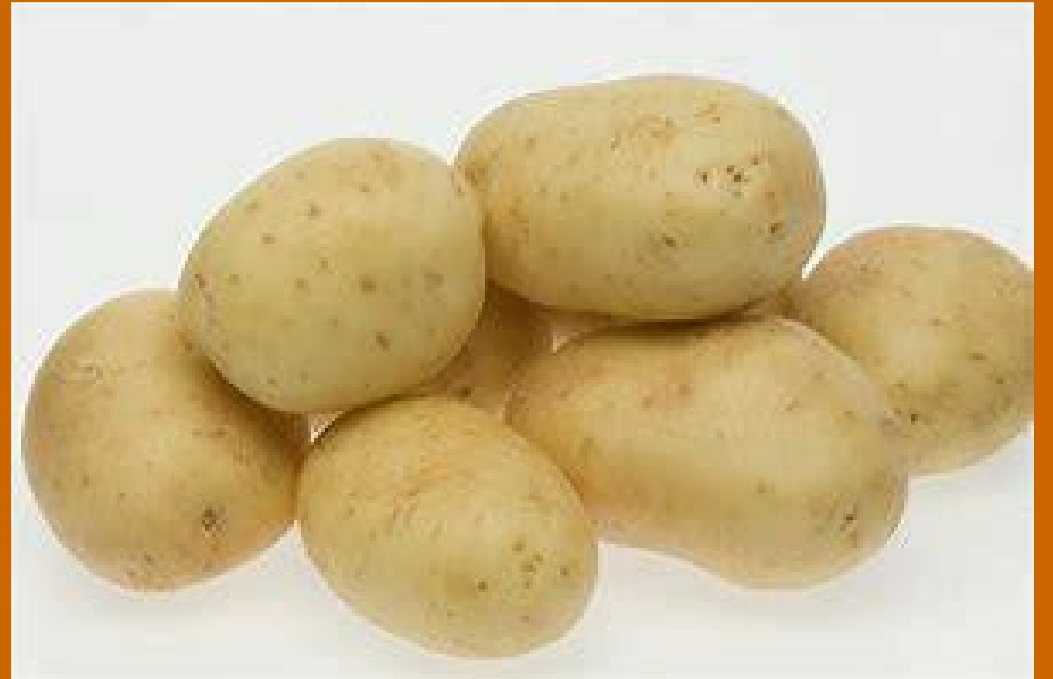
© 2006 Encyclopædia Britannica, Inc.

# POLLINATION



# Pollen and the pollinator









Your produce choices





Your produce choices  
*without* bees



WE NEED EACH OTHER SO -

SHARE SOME SPACE

Insect pollinated fruits and vegetables provide most of the **vitamins** and **minerals** we need.

Without bees, there would be **NO** **apples, pumpkins, strawberries,** or many other **fruits** and **vegetables**.



The economic value of insect  
pollinated crops is estimated at  
\$27 Billion.



**WE NOW HAVE A  
REASON TO CARE**





Pollinator Committee started with 8 and grew to 25 members!!!!



# SEVERAL CAUSES FOR THE DECLINING POPULATIONS



**Diseases &  
Parasites**

**Pesticides &  
Insecticides**

**Loss of  
habitat**

# WHAT CHANGED, WE WENT TOWARDS THE CLEAN LOOK.





# WE SPRAYED AND MOWED



# WHAT'S THE PLAN?

- Inform the Public about the need and situation
- Create New Pollinator Habitats
- Educate the Public about Pollinators



**EVERYONE ONE  
LOVES  
BUTTERFLIES**

---







## Local groups, individuals band together to help the bees through variety of programs now being offered

Andy Ebel  
Executive Director  
Jennings Co. Soil and Water  
Conservation District

The world is full of bees and honey bees are in a deep decline in population. Well, it's true. It depends if you like eating fruits like apples, blueberries, strawberries, or vegetables like broccoli, cauliflower, tomatoes. Then, you might be interested in pollinators.

According to the National Academy of Sciences, over a 75% of the flowering plants on the earth rely on insect pollinators in order to set seed or fruit. From these plants come the food of humankind but our ever-growing population of the first few years of the world. For now, in many places, pollinators are at risk.

But first, who are these pollinators? They are the bees and honey bees, bumble bees, hummingbirds, moths, bats, butterflies, and some insects. They must be a productive pollinator.

Pollinators are moving south to tropical parts of

the world for the past few decades and are experiencing a decline in population. There is a lot of research and information on the decline of bees and honey bees, but not much on the decline of other pollinators.

What are bees and honey bees? There are several species, but the most common are the honey bee, the bumble bee, the queen bee, the worker bee, the drone bee, and the queen bee.

So back to June of this year, the Jennings County Soil and Water Conservation District held a meeting to discuss the decline of bees and honey bees. They decided to develop a Community Pollinator Project, called the Jennings County Pollinator Project.

The project goals are to: 1. Increase the number of pollinators in the area. 2. Increase the number of people who are aware of the importance of pollinators. 3. Increase the number of people who are growing plants that are attractive to pollinators.

The project is currently in progress. The project is currently in progress. The project is currently in progress.



Credit pollinators for the production of many of the common food items we enjoy daily.



The Jennings County SWCD has developed a Community Pollinator Project. They are asking if you have any ideas, please contact them at 317-237-1234.



Local groups, individuals band together to help the bees through variety of programs now being offered.

## Animal found in streams linked to killing bees

It was a small, brown, furry animal found in a stream in Jennings County, Indiana. It was a small, brown, furry animal found in a stream in Jennings County, Indiana. It was a small, brown, furry animal found in a stream in Jennings County, Indiana.

The animal was found in a stream in Jennings County, Indiana. It was a small, brown, furry animal found in a stream in Jennings County, Indiana. It was a small, brown, furry animal found in a stream in Jennings County, Indiana.

The animal was found in a stream in Jennings County, Indiana. It was a small, brown, furry animal found in a stream in Jennings County, Indiana. It was a small, brown, furry animal found in a stream in Jennings County, Indiana.

The animal was found in a stream in Jennings County, Indiana. It was a small, brown, furry animal found in a stream in Jennings County, Indiana. It was a small, brown, furry animal found in a stream in Jennings County, Indiana.

## 'Everyone loves a Monarch butterfly'

By Sharon Hamilton

The Jennings County Soil and Water Conservation District held a meeting to discuss the decline of bees and honey bees. They decided to develop a Community Pollinator Project, called the Jennings County Pollinator Project.

The project goals are to: 1. Increase the number of pollinators in the area. 2. Increase the number of people who are aware of the importance of pollinators. 3. Increase the number of people who are growing plants that are attractive to pollinators.

The project is currently in progress. The project is currently in progress. The project is currently in progress.

The project is currently in progress. The project is currently in progress. The project is currently in progress.

The project is currently in progress. The project is currently in progress. The project is currently in progress.

The project is currently in progress. The project is currently in progress. The project is currently in progress.

The project is currently in progress. The project is currently in progress. The project is currently in progress.

The project is currently in progress. The project is currently in progress. The project is currently in progress.

The project is currently in progress. The project is currently in progress. The project is currently in progress.

The project is currently in progress. The project is currently in progress. The project is currently in progress.

They found around their fields where pesticides are applied. They found around their fields where pesticides are applied. They found around their fields where pesticides are applied.

They found around their fields where pesticides are applied. They found around their fields where pesticides are applied. They found around their fields where pesticides are applied.

They found around their fields where pesticides are applied. They found around their fields where pesticides are applied. They found around their fields where pesticides are applied.

They found around their fields where pesticides are applied. They found around their fields where pesticides are applied. They found around their fields where pesticides are applied.

They found around their fields where pesticides are applied. They found around their fields where pesticides are applied. They found around their fields where pesticides are applied.

They found around their fields where pesticides are applied. They found around their fields where pesticides are applied. They found around their fields where pesticides are applied.

They found around their fields where pesticides are applied. They found around their fields where pesticides are applied. They found around their fields where pesticides are applied.

They found around their fields where pesticides are applied. They found around their fields where pesticides are applied. They found around their fields where pesticides are applied.

They found around their fields where pesticides are applied. They found around their fields where pesticides are applied. They found around their fields where pesticides are applied.

They found around their fields where pesticides are applied. They found around their fields where pesticides are applied. They found around their fields where pesticides are applied.

## ONE-THIRD OF OUR FOOD DEPENDS ON POLLINATORS



Andy Ebel, director of the Jennings County Soil and Water Conservation District, holds a package of the many varieties of flower seeds available at no cost for residents to plant and help local pollinators thrive.

### Did You Know?

Many flowers require a specific butterfly, bee, or other insect for pollination. In fact, many of the fruits and vegetables we eat are the result of pollination. Without pollinators, we would not have many of the foods we love to eat.

Did you know that the average person eats about 100 pounds of food each year that has been pollinated by insects? That's a lot of food! And it's all thanks to the hard work of pollinators.

So, let's do our part to help these important creatures. We can plant pollinator-friendly plants in our yards and gardens. We can avoid using pesticides that harm pollinators. We can create a safe haven for these vital insects.

Let's all join together to protect our pollinators and the food we depend on.

### MORGAN LAWN CARE ENTERPRISES, INC.

Complete Lawn Maintenance and Snow Removal

2000 W. 10th St. N.  
North Vernon, IN 46059  
(317) 544-0000  
(317) 544-0100  
Email: morganlawn@comcast.net



# FREE Pollinator Seed (1500 Packets)







**WILDLIFE ACRES & FIELD BORDERS & FILTER STRIPS**

**USING CWI FUNDS AND CRP PROGRAM**



**CREATED 440 ACRES NEW HABITAT**





# New Known Pollinator Plantings in Jennings County





# MIGRATORY BIRD FESTIVAL

MAY 12<sup>th</sup>

## "Wings Over Muscatatuck"



E  
D  
U  
C  
A  
T  
I  
O  
N  
A  
L







# Monarch Waystations at ALL 7 Elementary Schools in the County





# Jennings County Middle School Monarch Waystation







**Jennings County  
High School – FFA**





**Jennings County  
Soil and Water  
Conservation District**

**Share Some Space Project**

**Spring 2017**

**Pollinator Plant Sale**



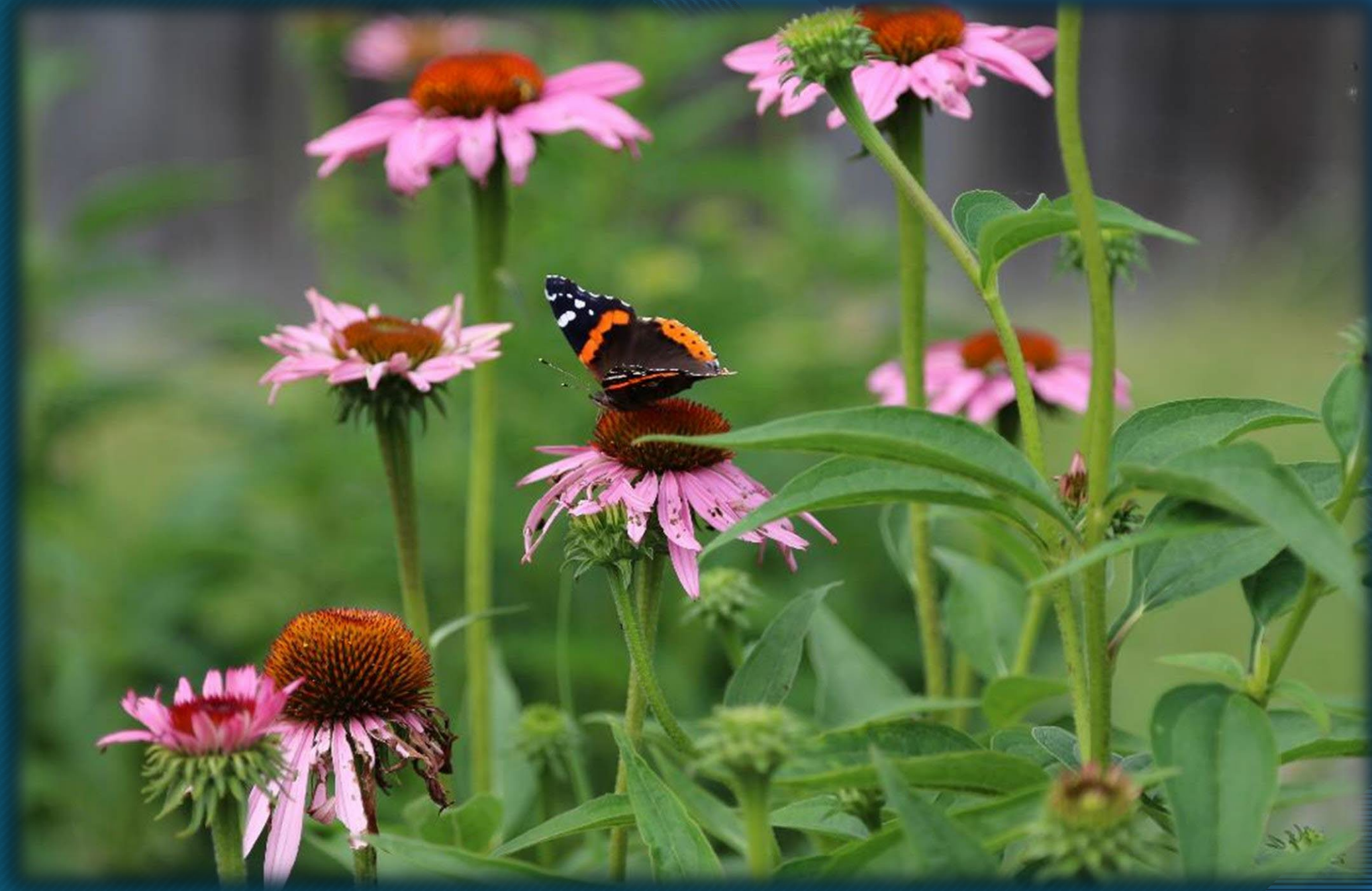


Plant Sales Year	# of Plants Sold	# of New Habitat
2016	2951	140
2017	2266	118
2018	2563	70
Sales for 3 years	Total # of Plants Sold = 7780	Total # of New Habitats = 328





# 4 Acres at the J.C. Middle School





**SCHOOL CORPORATION**

**OLD FOOTBALL FIELD**



# Old School Football Field with New Habitat











SA - The News-Median Press Herald - October 20, 2015



Sharon Knowles, right, and Alan Wardwell from the Mendocino National Wildlife Refuge stand in front of the Jennings County School Board about the butterfly garden that has been planted at all the county schools during their meeting on Monday, Oct. 19.



Sharon Knowles, right, and Alan Wardwell from the Mendocino National Wildlife Refuge stand in front of the Jennings County School Board about the butterfly garden that has been planted at all the county schools during their meeting on Monday, Oct. 19.

## Butterflies and bees grab local students' attention

**B**utterflies and bees are grabbing the attention of Jennings County students. Jennings County Schools is sponsoring a butterfly garden project at all the county schools during their meeting on Monday, Oct. 19.

At Monday night's Jennings County School Board meeting, two representatives from the US Fish and Wildlife Service spoke about the project. They said that the project is to draw monarch butterflies to the area and increase the population of the beautiful insects.

"You are the only county that all the schools are participating in this project," said Sharon Knowles, the Mendocino National Wildlife Refuge manager. "We are supplying you with the eggs and we are going to help you with the project."

Knowles said the eggs are being sent to the schools to be planted in the gardens. She said that the project is to draw monarch butterflies to the area and increase the population of the beautiful insects.

**Pollinator...**  
Read it here (page 44)

The Mendocino National Wildlife Refuge is sponsoring a butterfly garden project at all the county schools during their meeting on Monday, Oct. 19. The project is to draw monarch butterflies to the area and increase the population of the beautiful insects. The project is to draw monarch butterflies to the area and increase the population of the beautiful insects.

in the number of butterflies migrating to Mexico and that is a concern for everyone.

But only one school is getting involved in this initiative, but Jennings County Schools is sponsoring a butterfly garden project at all the county schools during their meeting on Monday, Oct. 19.

The Jennings County FFA Board is sponsoring a butterfly garden project at all the county schools during their meeting on Monday, Oct. 19.

Jennings County High School is sponsoring a butterfly garden project at all the county schools during their meeting on Monday, Oct. 19.

The project is to draw monarch butterflies to the area and increase the population of the beautiful insects. The project is to draw monarch butterflies to the area and increase the population of the beautiful insects.

**Pollinator...**  
Read it here (page 44)

The Mendocino National Wildlife Refuge is sponsoring a butterfly garden project at all the county schools during their meeting on Monday, Oct. 19. The project is to draw monarch butterflies to the area and increase the population of the beautiful insects. The project is to draw monarch butterflies to the area and increase the population of the beautiful insects.

education about the pollinator garden. It was a hands-on activity, and the students learned a lot about the importance of pollinators.

Under the guidance of Alan Wardwell, Jennings County Schools has developed a butterfly garden project at all the county schools during their meeting on Monday, Oct. 19.

The project is to draw monarch butterflies to the area and increase the population of the beautiful insects. The project is to draw monarch butterflies to the area and increase the population of the beautiful insects.

The project is to draw monarch butterflies to the area and increase the population of the beautiful insects. The project is to draw monarch butterflies to the area and increase the population of the beautiful insects.

**Million Pollinator Gardens**  
is the goal of nat'l campaign

Knowles said the project is to draw monarch butterflies to the area and increase the population of the beautiful insects. The project is to draw monarch butterflies to the area and increase the population of the beautiful insects.

The project is to draw monarch butterflies to the area and increase the population of the beautiful insects. The project is to draw monarch butterflies to the area and increase the population of the beautiful insects.



Jennings County High School students, including Alan Wardwell, are working on the butterfly garden project at all the county schools during their meeting on Monday, Oct. 19.

**Pollinator...**  
Read it here (page 44)

The Mendocino National Wildlife Refuge is sponsoring a butterfly garden project at all the county schools during their meeting on Monday, Oct. 19. The project is to draw monarch butterflies to the area and increase the population of the beautiful insects. The project is to draw monarch butterflies to the area and increase the population of the beautiful insects.



# Educational Signage at New Pollinator Habitat

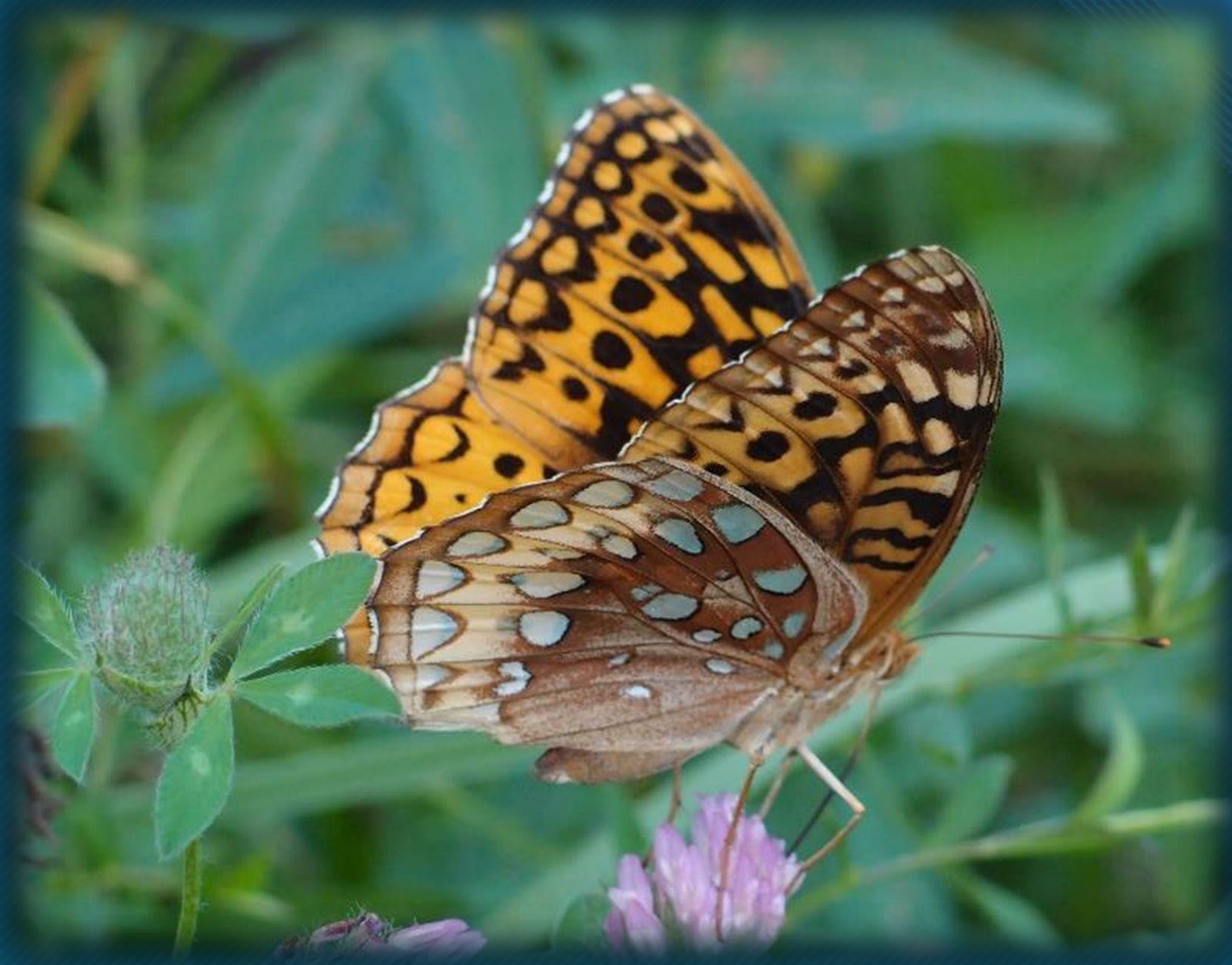




# SAND CREEK SCHOOL









Jennings Co. H.S. Ag class  
built Bluebird Houses for  
the project.











Computer Drawing  
of Proposed Project



## Community effort creating pollinator garden for public

by Barbara King

If you go out to the Jennings County Fairgrounds this summer, you're sure to notice the new "Pollinator Garden" which is being installed by a whole host of businesses and individuals who have volunteered time and materials.

This week, the crew was out rototilling and covering the planting area with geotextile to keep weeds out. Next, the volunteers spread mulch over the black cloth in preparation for the May 7 plantings of pollinator plants as well as vegetables in raised beds.

Andy Ertel, director of the Jennings County Soil and Water Conservation District (SWCD), led the effort with fellow local Pollinator Committee members Dan Megel, Ralph Cooley and Richard Wengert. The committee, also known as Share Some Space, was formed last year in response to the marked decline of insects known as "pollinators."

These insects—notably honeybees and monarch butterflies—are especially important for



Working on the Pollinator Garden at the Jennings County Fairgrounds this week are, left to right, Pollinator Committee members Dan Megel, who has been a JC Soil and Water Conservation District supervisor for 25 years, SWCD director Andy Ertel, and Master Gardeners Richard Wengert and Ralph Cooley. All the men are also members of the local Pollinators Committee. —Staff Photo by Barbara King

the role they play in nature of pollinating vegetables and fruits. It is estimated over one-third of all food items we eat are dependent on these insects. The decline in pollinators is fitting from plant to plant fertilizing creation of fruits and vegetables.

There are numerous theories about what has caused what is considered a dramatic decline of these insects. Whether it is from urban sprawl and the accompanying decline in monarch butterflies' habitats or the result of man-

made pesticides, planting a pollinator garden can help give these creatures a leg or two or three, etc. up.

The local Share Our Space initiative is promoting the goal set by the federal government of getting a million new pollinator

gardens "planted" by the end of 2020. The SWCD held a pollinator plant sale earlier this spring to help meet this goal, with plants set to arrive the first week of May.

The committee came up with the idea of this type of garden at the fairgrounds to help spread the news about the importance of these plants. As an entire benefit, the 60 x 40 or 2400 square foot space will also beautify the previously empty space between the Home and Family Arts and Wildlife buildings.

"We sold it, sure we have to deliver," laughed Andy Ertel as he loaded mulch Monday afternoon.

The men were upbeat as they worked under the surprisingly hot April sun.

All joined in reporting how the community pitched in to support their project without even asking for a donation. "I would tell them what we're doing and they would donate," said Ertel of the various businesses who gave of their expertise.

For example, St. John Trucking provided the

ground and Dave O'Mara donated the paving of the U-shaped walkway into and out of the space. Martin's came out and tilled the soil and the Bartholomew County Waste District donated the mulch. Our own highway department handled the materials and "were excited to work with," said the volunteers. The 2020 Future Farmers of America is involved, too, with members building the raised beds and also hot and hard labor.

The garden, called Ralph Cooley "is going to give a lot of people enjoyment and a lot of people ideas about their own backyards."

The space will be handicapped accessible and will have benches for passers-by to stop and enjoy.

Dan Megel noted that the volunteers "will maintain the garden" so that future generations will also enjoy this very special space created for the benefit of not only bees and butterflies, but for us, too.



**INFORMING**  
*the public*



# Pollinator Pathway Jennings County Fairgrounds

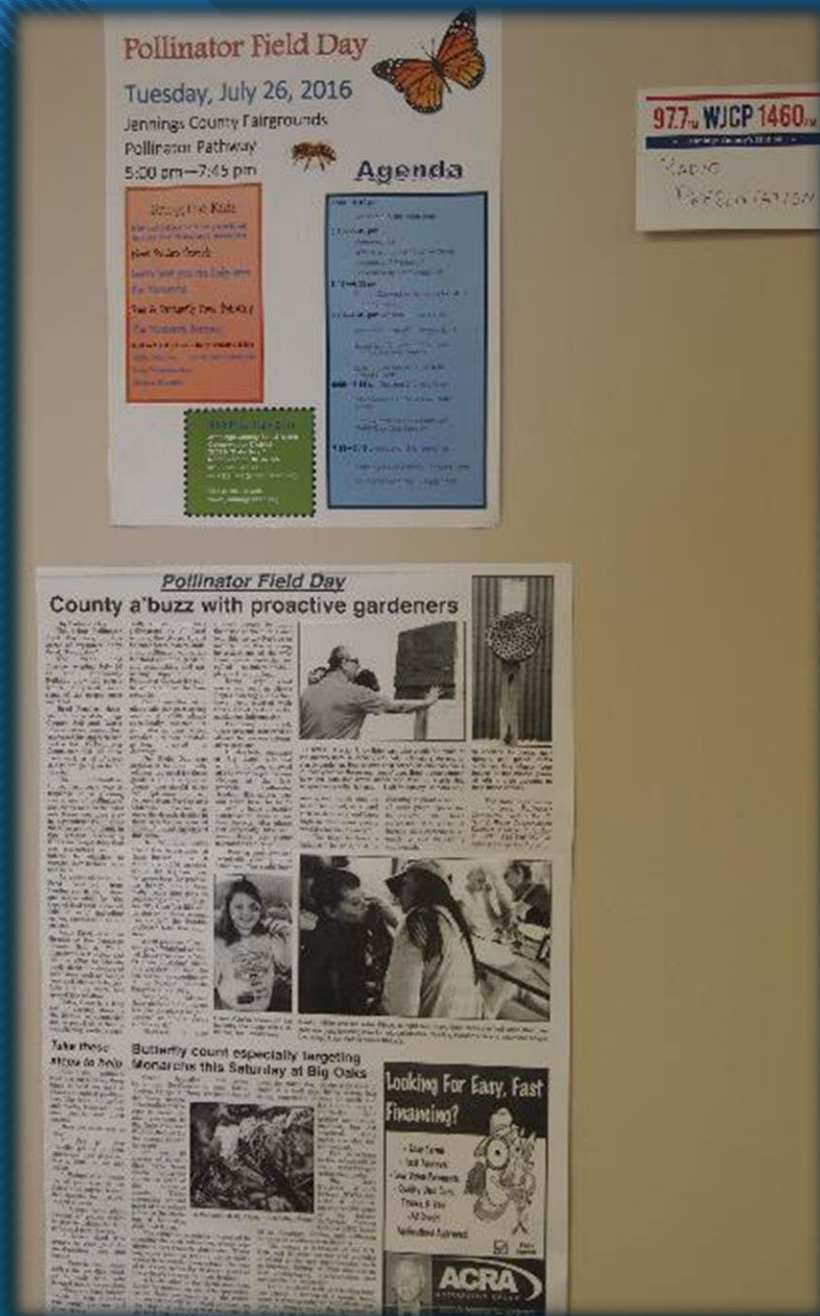








# Pollinator Field Day 124 Attendees







# ECO PARK





**“LOVE THOSE POLLINATORS”**



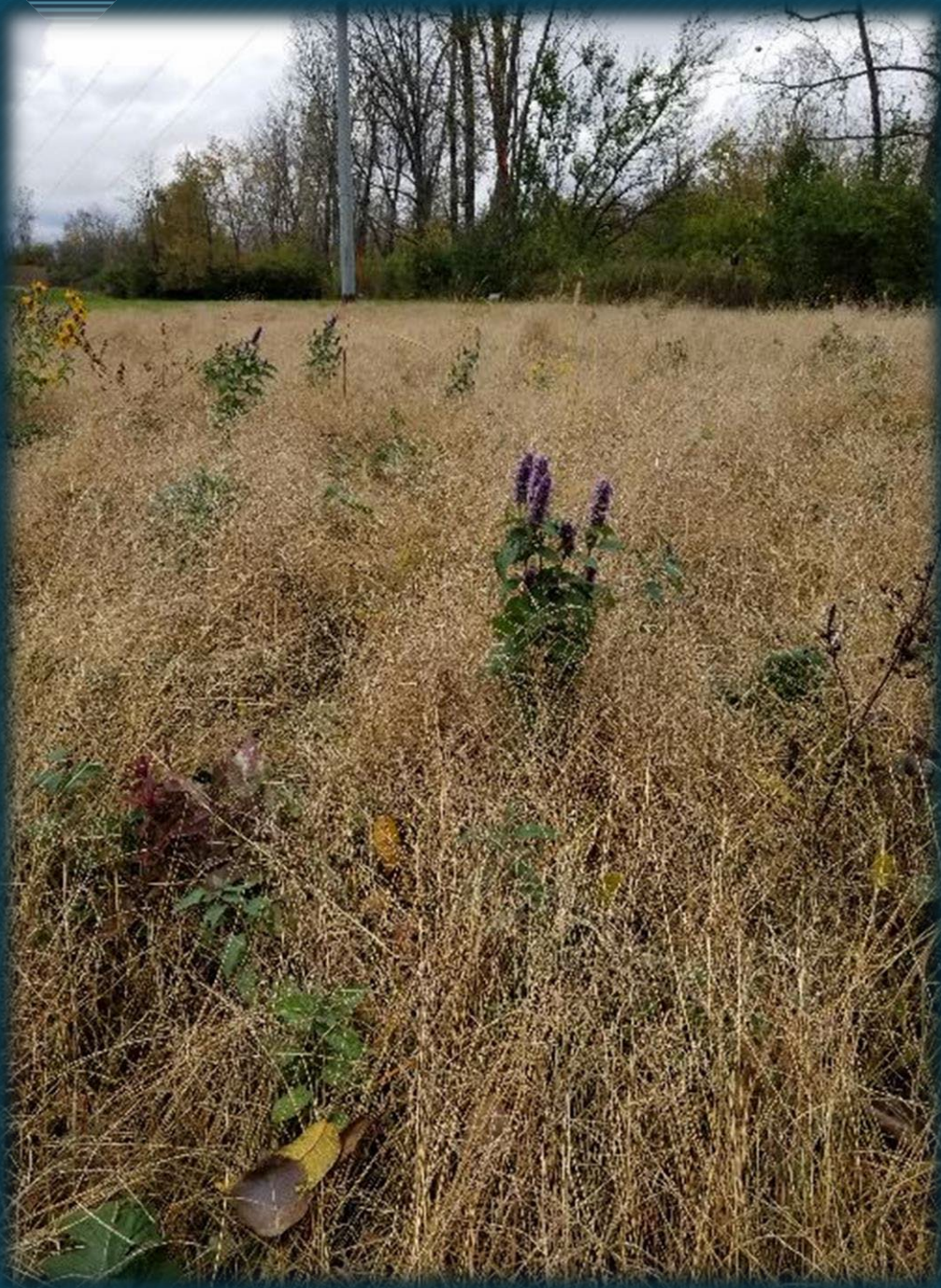




**Vernon Commons  
New Pollinator Habitat**



**Indiana National Guard** in  
Bartholomew County joins in the  
project & MUTC - 93 ACRES





# CALLI NATURE PRESERVE





# LOCAL BUSINESS

ELLIS GAS COMPANY





# BACK YARDS







SWCD Board Members  
City Attorney  
Judges  
TIF Board Land  
Landowners  
Civic Groups







# Hike the Pollinator Capital of Indiana



## SHARE SOME SPACE

[www.jenningsswcd.org](http://www.jenningsswcd.org)

**Community Pollinator Project**

[www.jenningscounty.net](http://www.jenningscounty.net)



# Tripton Park



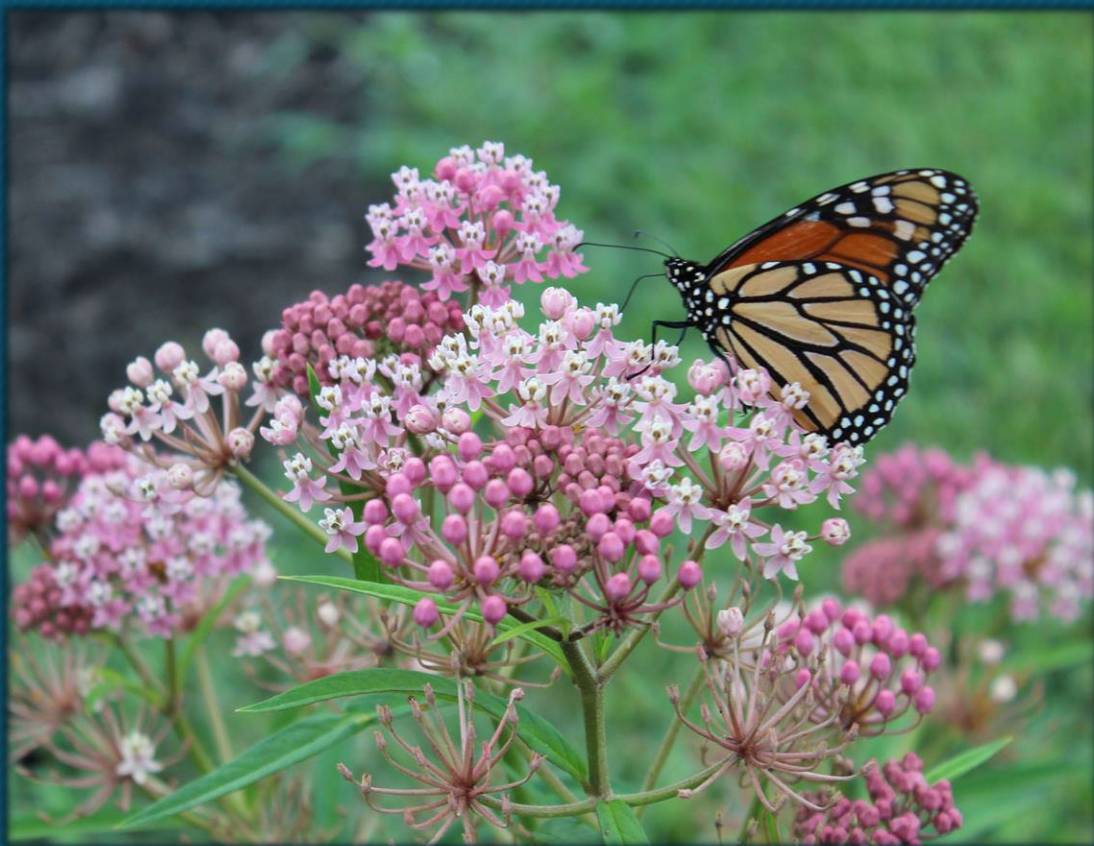


# CREATE YOUR OWN POLLINATOR GARDEN WORKSHOP!



40 more future  
habitats







# SPREADING THE WORD

## PICKING UP STEAM

### Pollinator project gaining popularity in community

By CECILIA ELIUS  
For The Republic

THE Community Pollinator Project by the Jennings County Soil and Water Conservation District continues to make strides and gain in popularity with residents.

Andy Ertel, the Soil and Water Conservation District's executive director, started in 2015 a project to increase the local pollinator population by planting flowers and plants that attract pollinators and help them thrive.

Bees, butterflies, humming birds and some insects are examples of pollinators that are necessary to grow the fruits and vegetables that humans and animals need. Bees are the most prolific pollinators.

Because of a sudden decline in the bee population, the United States Department of Agriculture sponsored a national project to increase the bee population.

Jennings County's took the cue and its efforts have resulted in pollinator gardens planted across the community, and individuals learning how to plant gardens of their own.

More recently, in May, the Soil and Water Conservation District completed its second annual plant sale and sold 2,100 plants and flowers for individual gardens.

Now the focus has been on erecting eight new billboards



SUBMITTED PHOTO

Walmart's Pollinator Garden is in place and ready for blooming. In addition to growing their own pollinator garden, Walmart has provided two grants to help the Jennings County Pollinator Project.

across the county that designed to encourage community awareness and involvement in the project.

Ertel and the district's administrative assistant, Kelly Kent, began the project without any funding, equipment or labor.

"The first thing we had to do was learn about bees and then we had to figure out how to help them," Kent said.

After a crash course in what bees, butterflies and birds need

to survive, Ertel and Kent set about alerting the community to the crisis and presenting solutions such as planting gardens that attract pollinators.

They contacted Burpee Seed Company and received generous donations of seeds to help grow private and public pollinator gardens.

"We started out with six volunteers and now we have 20 committee members. We couldn't do any of this without

the community support we receive including donations from local businesses and organizations," Ertel said.

In less than two years, the Jennings County Community Pollinator Project has won multiple state, regional and even national awards.

"We are not slowing down at all. We have many projects in progress and more in the planning stage. This will be a busy summer," Kent said.





**Our way of saying “Thank You” to Wal\*Mart for their financial contributions to the “Share Some Space” project.**





## 3 ACRES in May 2018 at INDUSTRIAL PARK WETLAND SITE





Bob and Tina Ellis

1 acre of Wildflowers

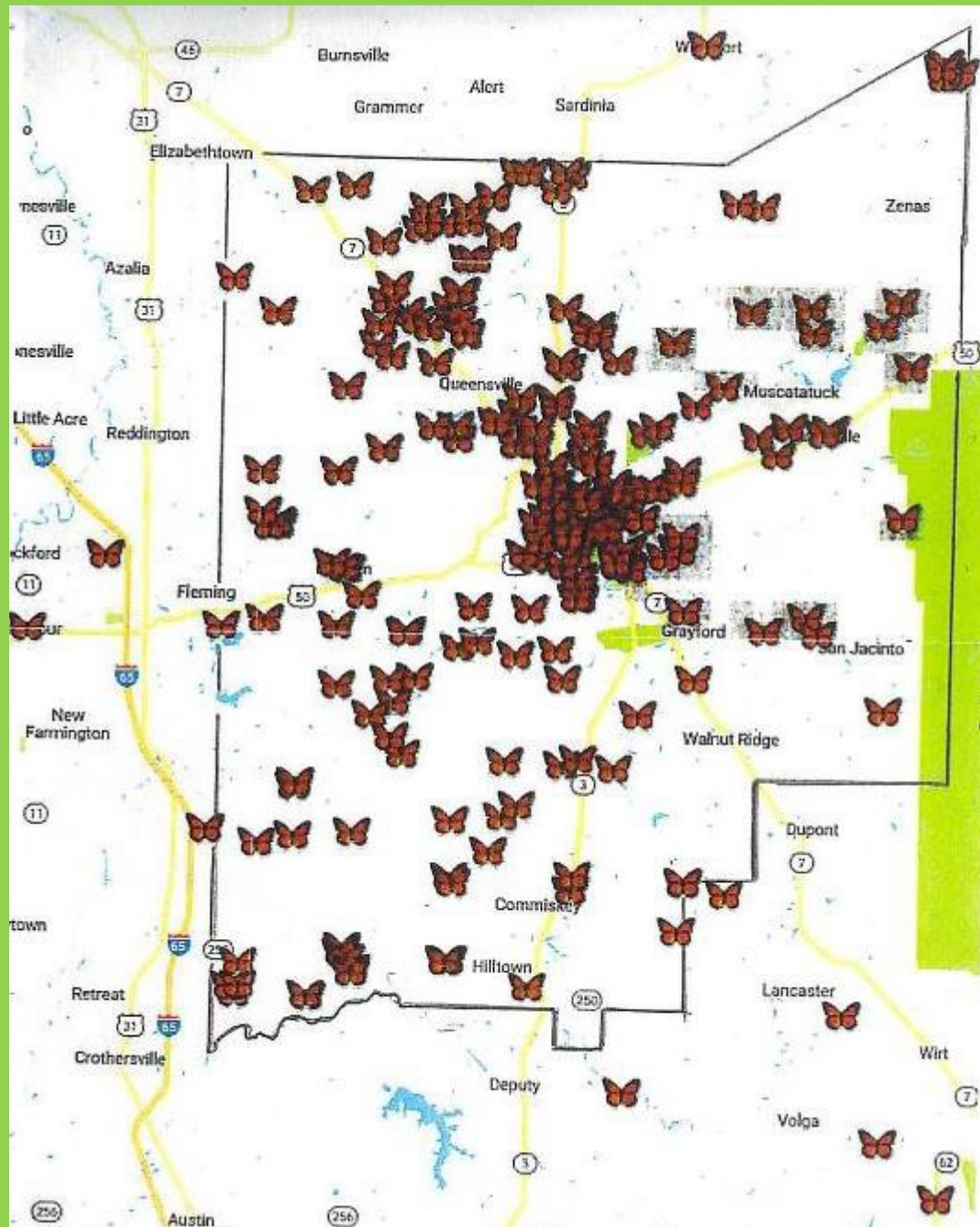








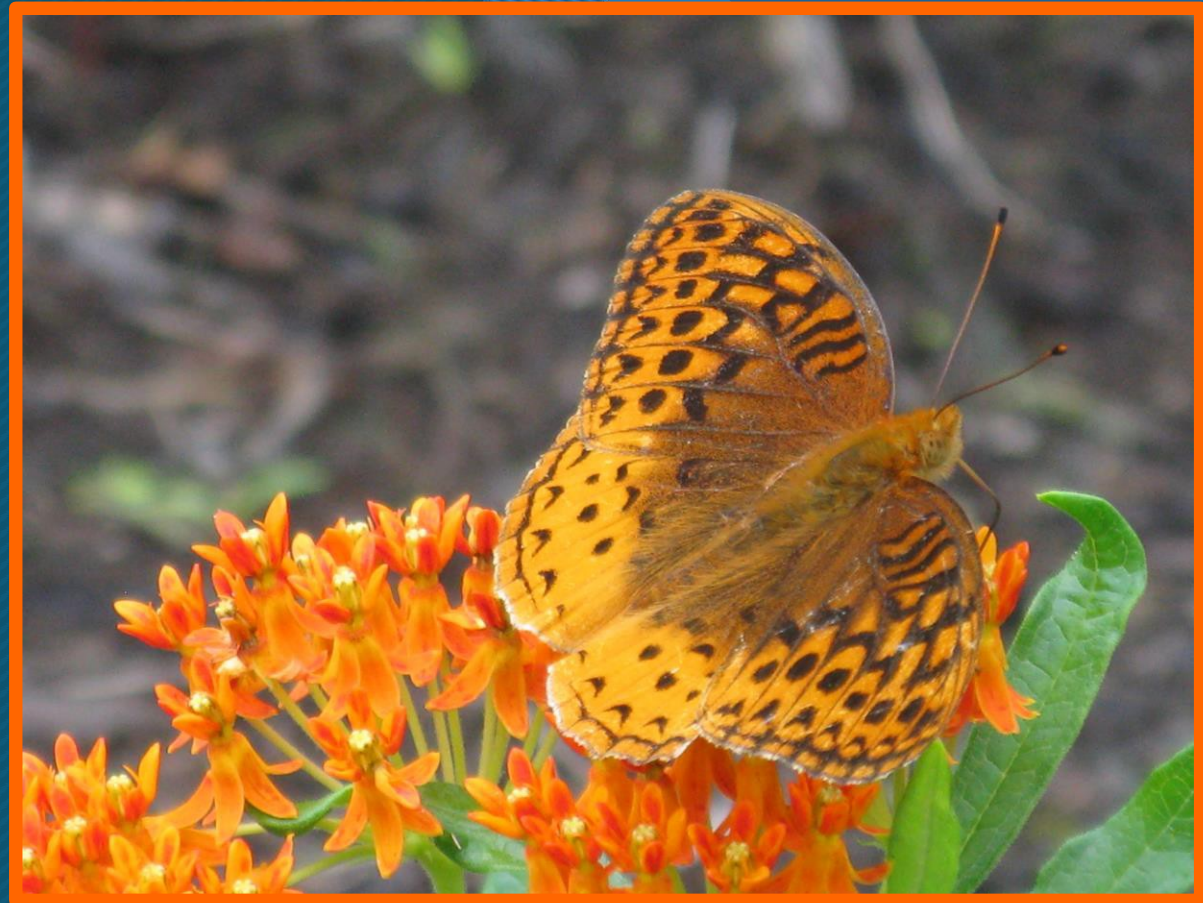
# New Habitat in Jennings County





4 ACRES to be Planted Spring 2020

CREATE MORE HABITAT





# Here is an estimation of many pollinators live in our new habitats

**We have counted 12 different pollinators new 10 by 10 foot area (butterflies, bumble bees, honey bees, moths, etc.)**

7 elementary X 12 = 84

High School 2500 sq.ft = 300

440 Acres of Ag. Land (credit  $\frac{1}{4}$  are flowers) = 574,992

Sand Creek School 10 acres = 13,068

Middle School 4 acres = 5,227

328 Plant Sale Habitats = 3,936

Tripton Park 5 acres = 6,534

Eco Park 4 acres = 5,227

Vernon Park  $\frac{1}{4}$  acre = 3,267

Calli Nature Preserve 4 acres = 5,227

City Park  $\frac{1}{4}$  acre = 300

Muscatatuck Co. Park = 300

Seed Packages to 500 people = 6,000

Camp Atterbury 93 acres (credit  $\frac{1}{4}$  are flowers) = 121,324

Muscatatuck Wildlife Refuge 48 acres = 62,726

Crosley Fish & Wildlife 3 acres = 15,681

City Attorney 3 acres = 7,840

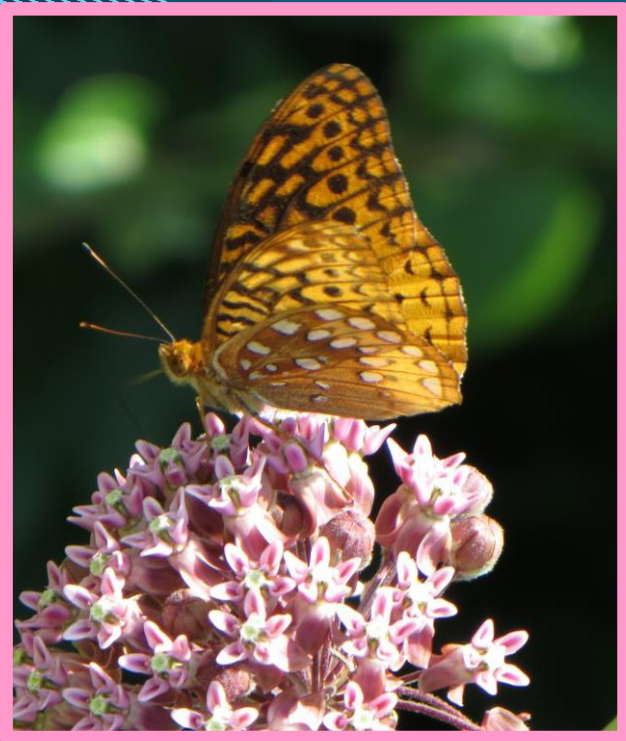
SWCD board members = 5,000

Industrial Park 3 acres = 15,681

American Axle 4 acres = 5,227



857,941



POLLINATORS



# SHARE OUR STORY AND PROVIDE ASSISTANCE TO OTHERS

- Shelby Co. Parks & Rec.
- Indiana State Association of SWCD
- Pleasant Grove Park
- Sierra Club
- National Association of SWCD Annual Meeting
- Franklin Co. SWCD Annual Meeting





# SHARE OUR STORY AND PROVIDE ASSISTANCE TO OTHERS

- **Shelby Co. SWCD Annual Meeting**
- **Jefferson Co. SWCD Annual Meeting**
- **Bedford Rotary, Trimble Co., KY**
- **Oak Heritage Conservancy**
- **Hanover College**





Are you ready to ....

*Share Some Space*

