



Celebrating 20 Years of Pollution Prevention in Indiana

How our Partnership has Served
Indiana and Created Opportunities
for Future Collaboration

Jennifer Collins, Assistance and Outreach Manager
IDEM - Office of Program Support

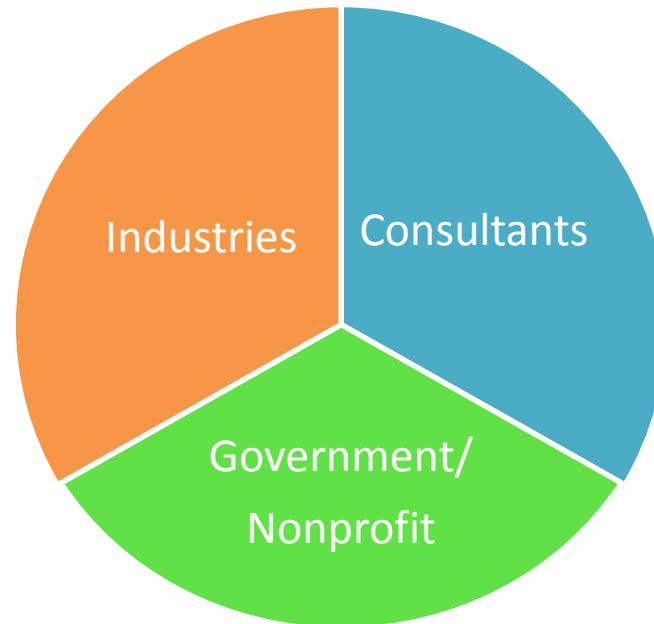


Topics

- Who are the Partners for Pollution Prevention?
- What do we each bring to the partnership?
- What is pollution prevention?
- What have we accomplished?
- Where are we headed?



Who are the Partners for Pollution Prevention?



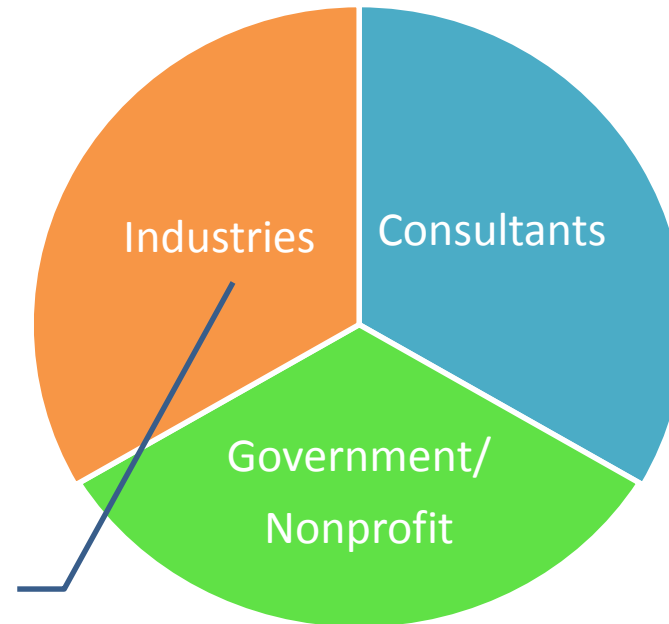
Mission

The Partners for Pollution Prevention champion pollution prevention and environmental stewardship programs in businesses and organizations by promoting successful practices and approaches to achieve measurable reduction of pollution in Indiana.



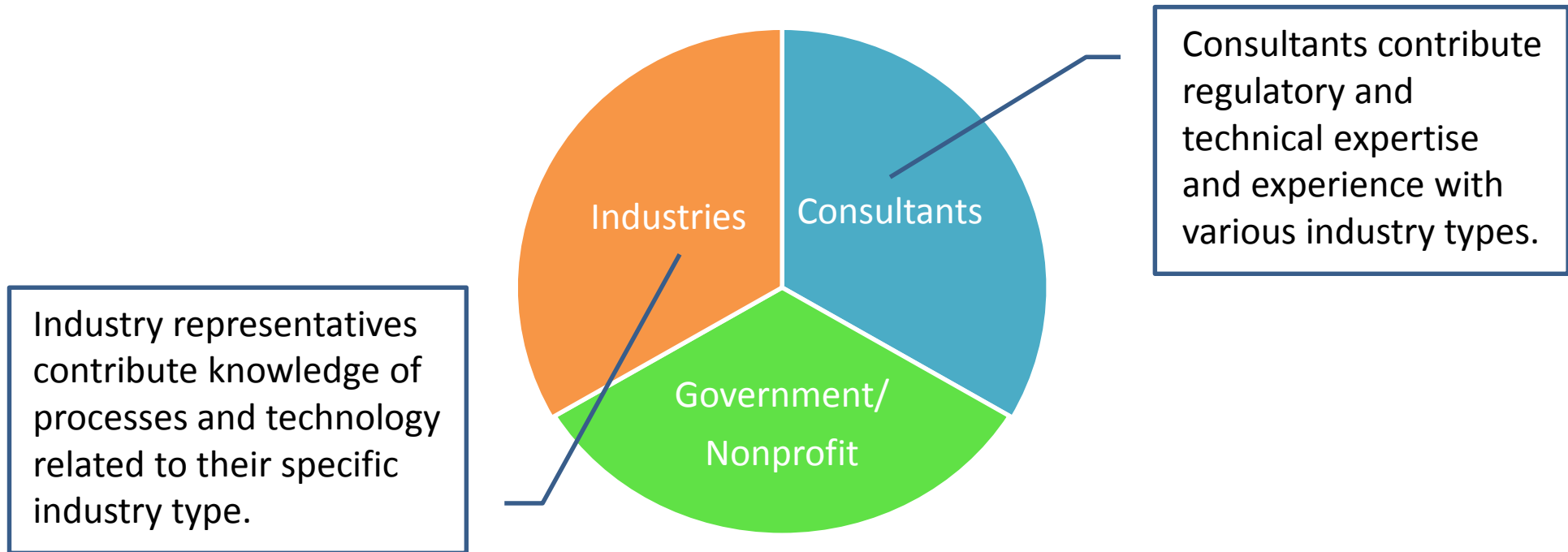
What do we each bring to the partnership?

Industry representatives contribute knowledge of processes and technology related to their specific industry type.



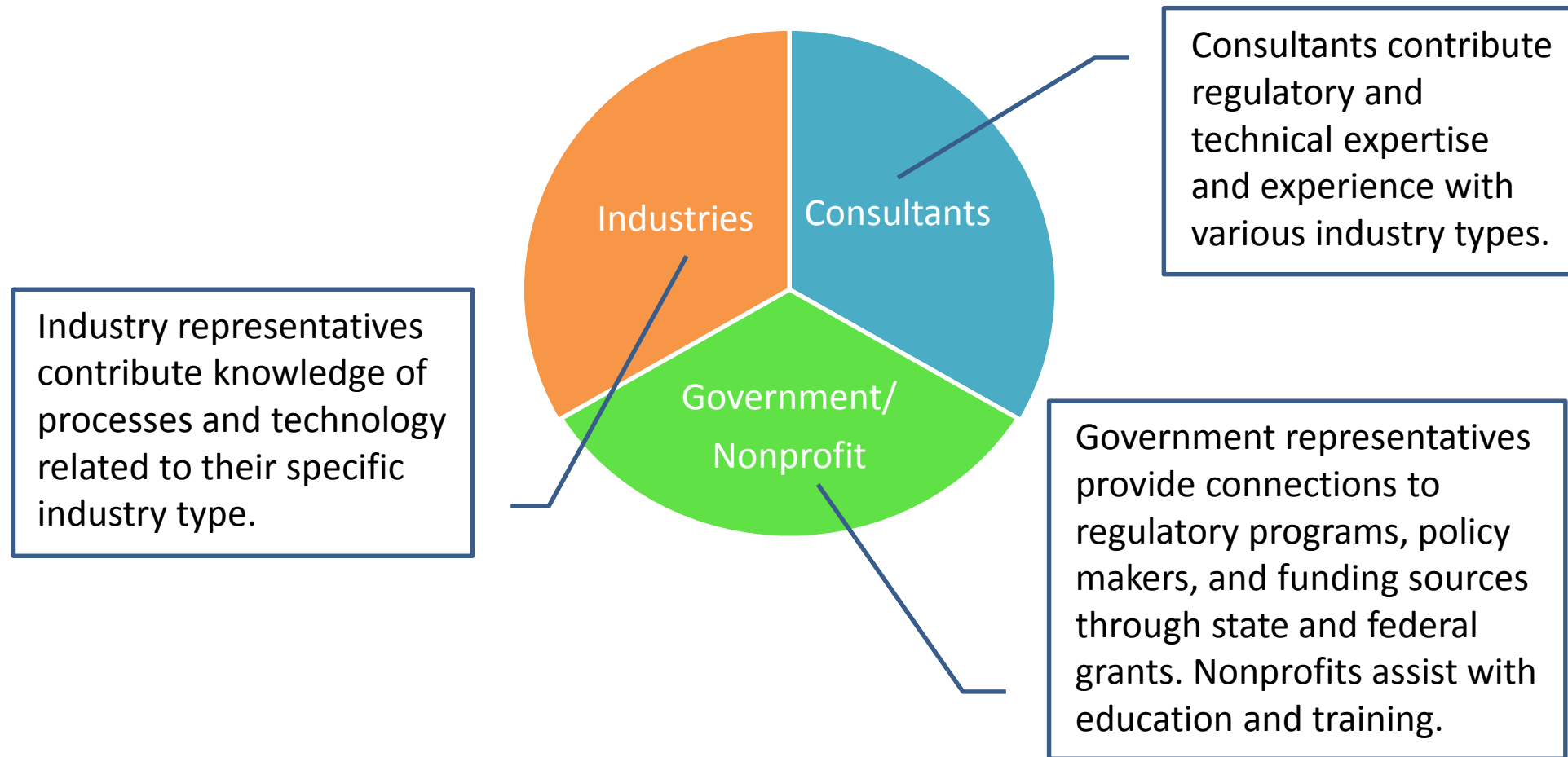


What do we each bring to the partnership?





What do we each bring to the partnership?

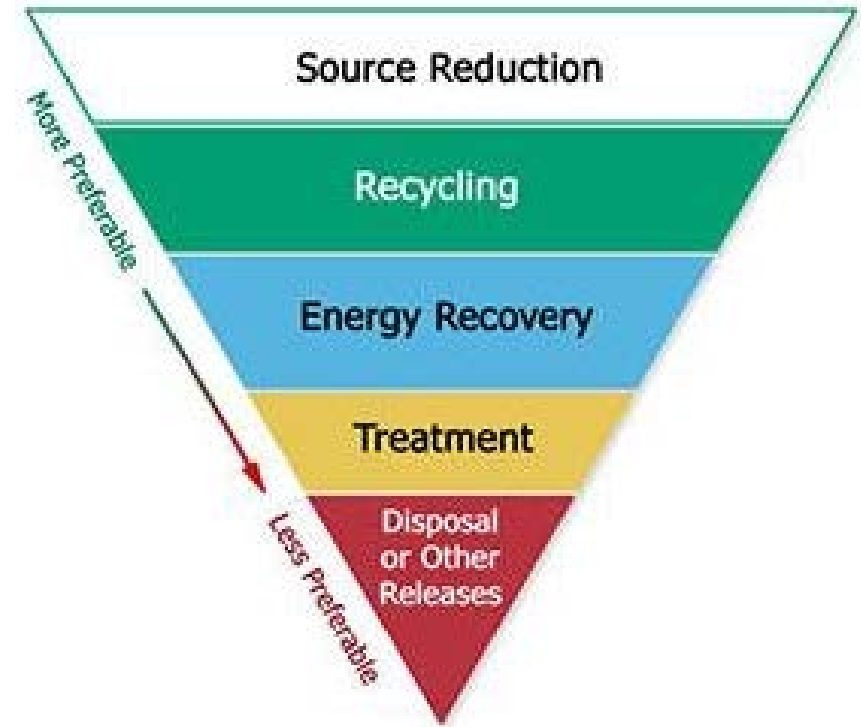




What is pollution prevention?

Pollution prevention (also source reduction):

- 1) Reduces the amount of any hazardous substance, pollutant or contaminant entering any waste stream or otherwise released into the environment (including fugitive emissions) prior to recycling, treatment or disposal; and
- 2) Reduces the hazards to public health and the environment associated with the release of such substances, pollutants or contaminants.





Additional Pollution Prevention Practices



Practices that reduce or eliminate the creation of pollutants through:

- 1) Increased efficiency in the use of raw materials, energy, water, or other resources, or
- 2) Protection of natural resources by conservation.

are also considered to be pollution prevention.



How Pollution Prevention Can be Accomplished

- 1) Equipment or technology modifications
- 2) Process or procedure modifications
- 3) Product reformulation or redesign
- 4) Substitution of raw materials
- 5) Improvements in housekeeping and/or maintenance
- 6) Training
- 7) Inventory Control



What Pollution Prevention Does Not Include

- Energy Recovery
- Treatment of a waste stream
- Disposal
- Recycling
- Any practice that alters a hazardous substance, pollutant or contaminant once it is generated
- A practice that is not necessary for production
- Practices that create new risks to human health or the environment



What are we celebrating?



- Toxics Reductions
- Air Emissions Reductions
- Energy Savings
- Cost Savings
- Process Improvements
- Water Use Decreases
- Waste Reductions
- Working Together



Over the past ten years, the Partners
for Pollution Prevention have...



Reduced over 16 trillion
pounds of air emissions

This included
almost 2 million
pounds of air
toxics reductions





Reduced almost 723 million
pounds of hazardous waste

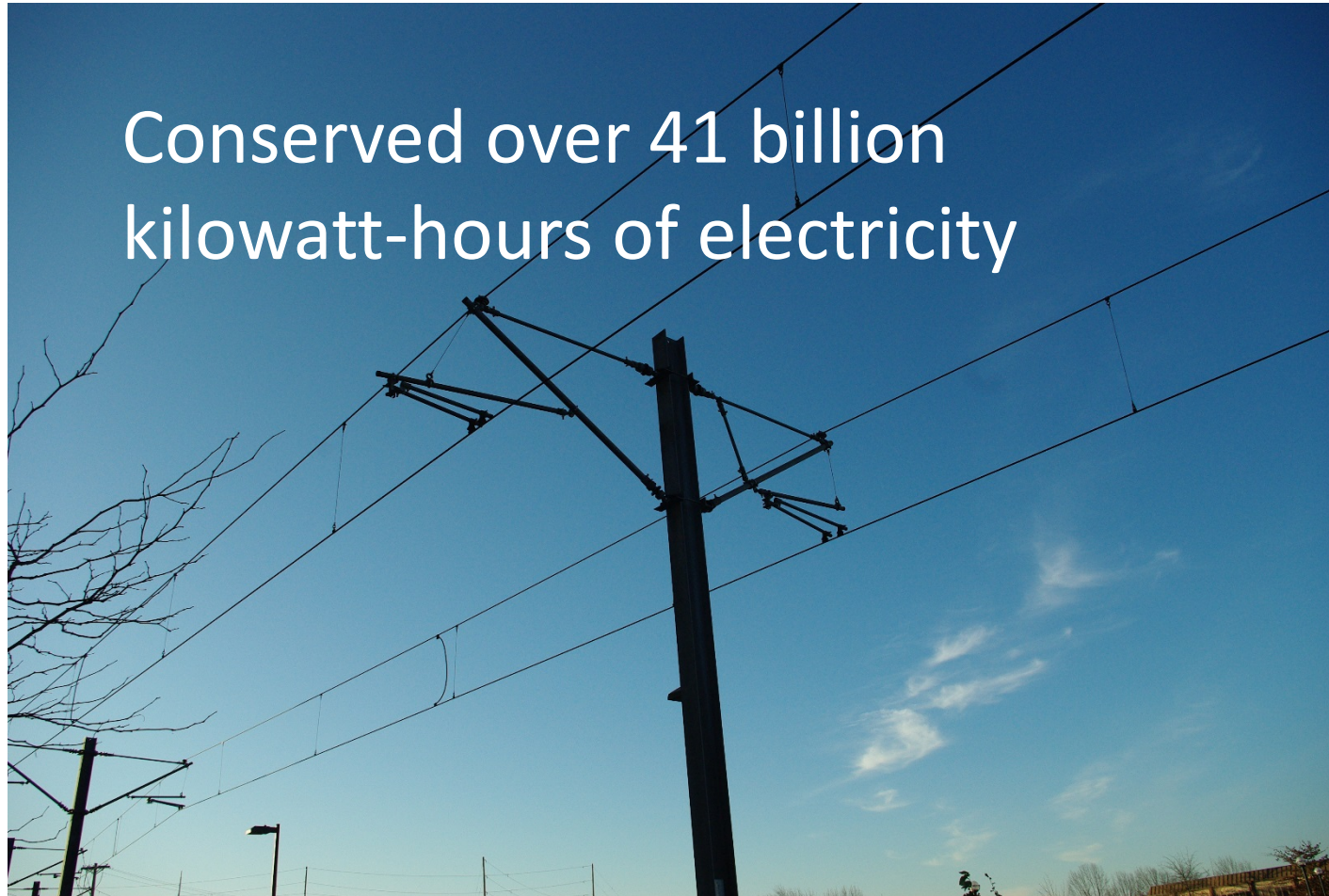


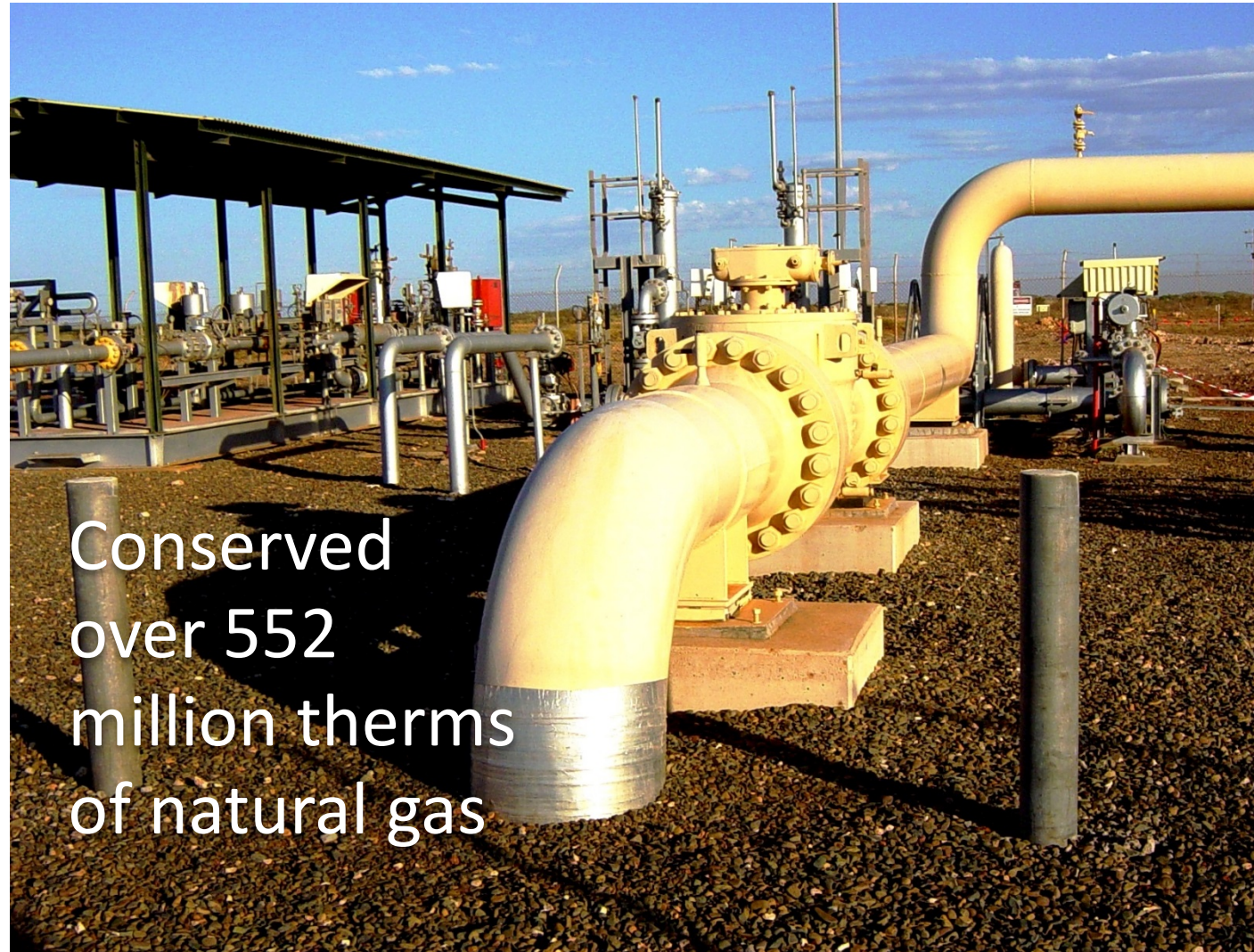
Eliminated 149 million
pounds of solid waste out
of their processes





Conserved over 41 billion
kilowatt-hours of electricity





Conserved
over 552
million therms
of natural gas



Conserved over 7 billion
gallons of water





Reduced over 70 million
pounds of water pollution



Where are we headed?

- Providing more pollution prevention opportunity assessments
- Educating businesses and individuals about pollution prevention
- Increasing membership in voluntary programs:
 - Partners for Pollution Prevention
 - Environmental Stewardship Program
 - CLEAN Community Challenge



Where are we headed?

- Increasing use of success stories to transfer technology and concepts for pollution prevention projects
- Collaborating with the Purdue Manufacturing Extension Partnership and other entities
- Developing opportunities for business-to-business mentorships
- Collaborating with universities on pollution prevention/sustainability internships



Here's to another



of great success
in Indiana!



Questions?



Jennifer Collins

Assistance and Outreach Manager

jcollins1@idem.IN.gov

(317) 234-9730

Indiana Department
of Environmental Management
Office of Program Support