

WELCOME TO KIMBALL INTERNATIONAL, INC.



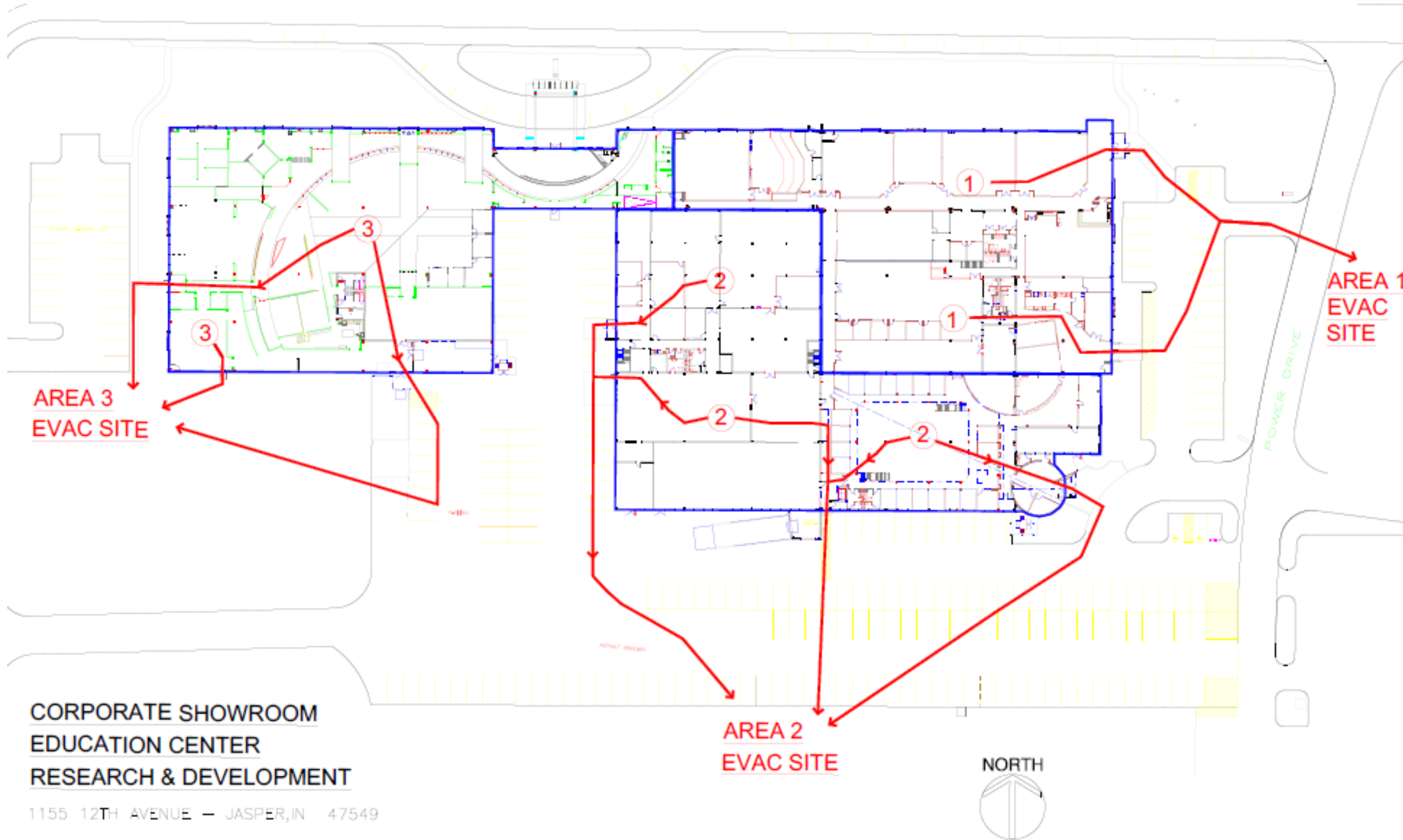
General Information

- RESTROOMS
- INTERNET (KIMBALL GUEST)
- PHONES
- SMALL CONFERENCE ROOMS AVAILABLE
- BREAKFAST
- LUNCH (Education Center Dining Area)
- TOURS – start promptly after lunch

Tour Requirements

- Tour of National – 11th Avenue – restricted to non-competitive industries.
- All other tours – open to all attendees
- Tours of Showroom and Research & Development will be walking tours
- Closed Toed Shoes only
- Safety Glasses will be provided for you
- Transportation will be by Kimball van to 11th Ave site

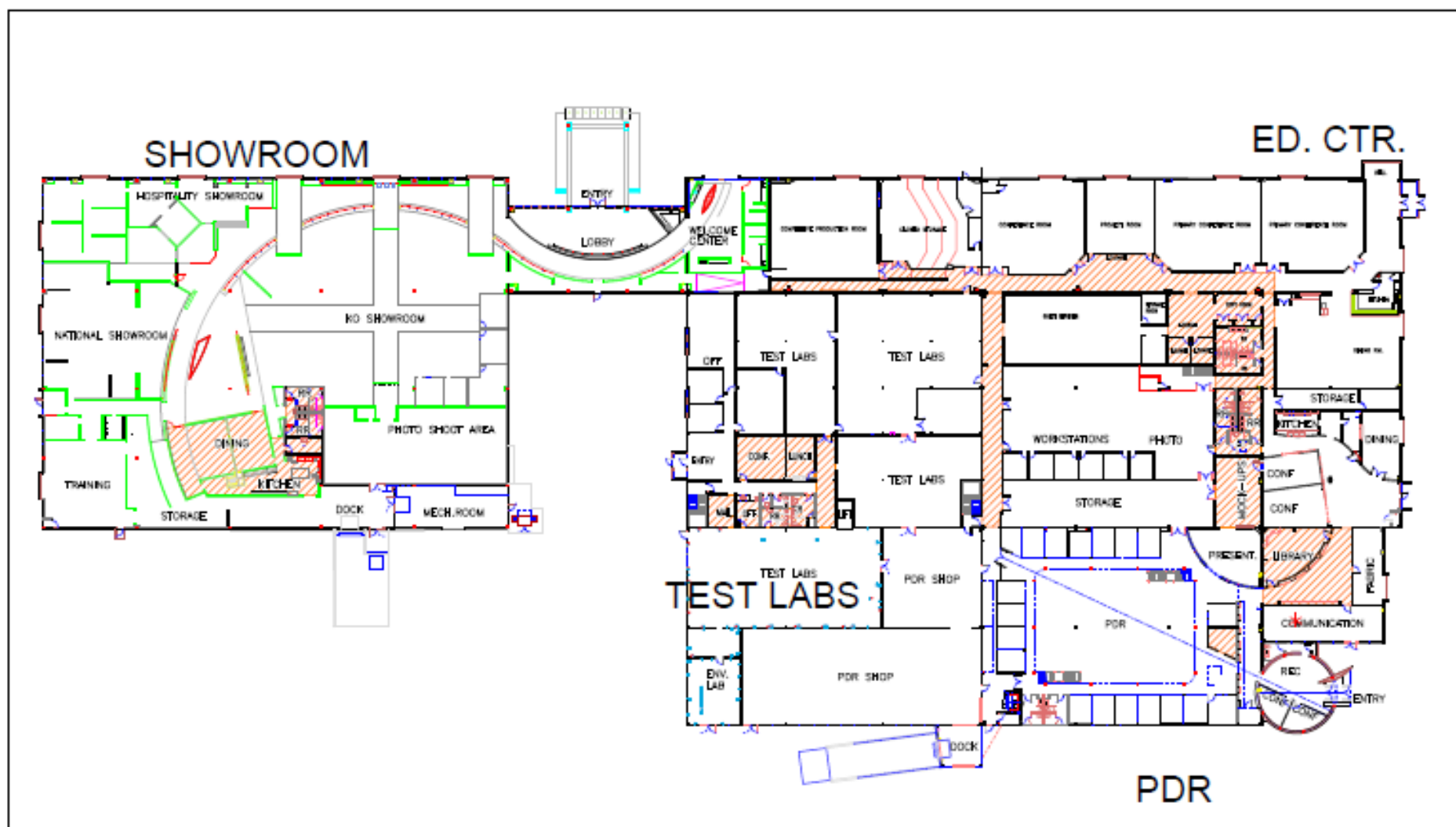
Evacuation and Seek Shelter



CORPORATE SHOWROOM
EDUCATION CENTER
RESEARCH & DEVELOPMENT

1155 12TH AVENUE - JASPER, IN 47549

SEEK SHELTER AREAS ARE CROSS HATCHED IN ORANGE



ALL 2nd FLOOR OCCUPANTS SHOULD SEEK SHELTER ON THE MAIN FLOOR



**SHOWROOM/EDUCATION CENTER
PRODUCT DESIGN & RESEARCH/TEST LABS**

1155 W. 12th AVENUE JASPER, IN. 47549

911 BLDG. NO. 51A (PDR) 51B (ED. CTR.) 51C (SHOWROOM) 51D (TEST LABS)