

VINCE GRIFFIN

VICE PRESIDENT

**ENVIRONMENTAL & ENERGY
POLICY**

INDIANA CHAMBER OF COMMERCE

317/264-6881

vgriffin@indianachamber.com

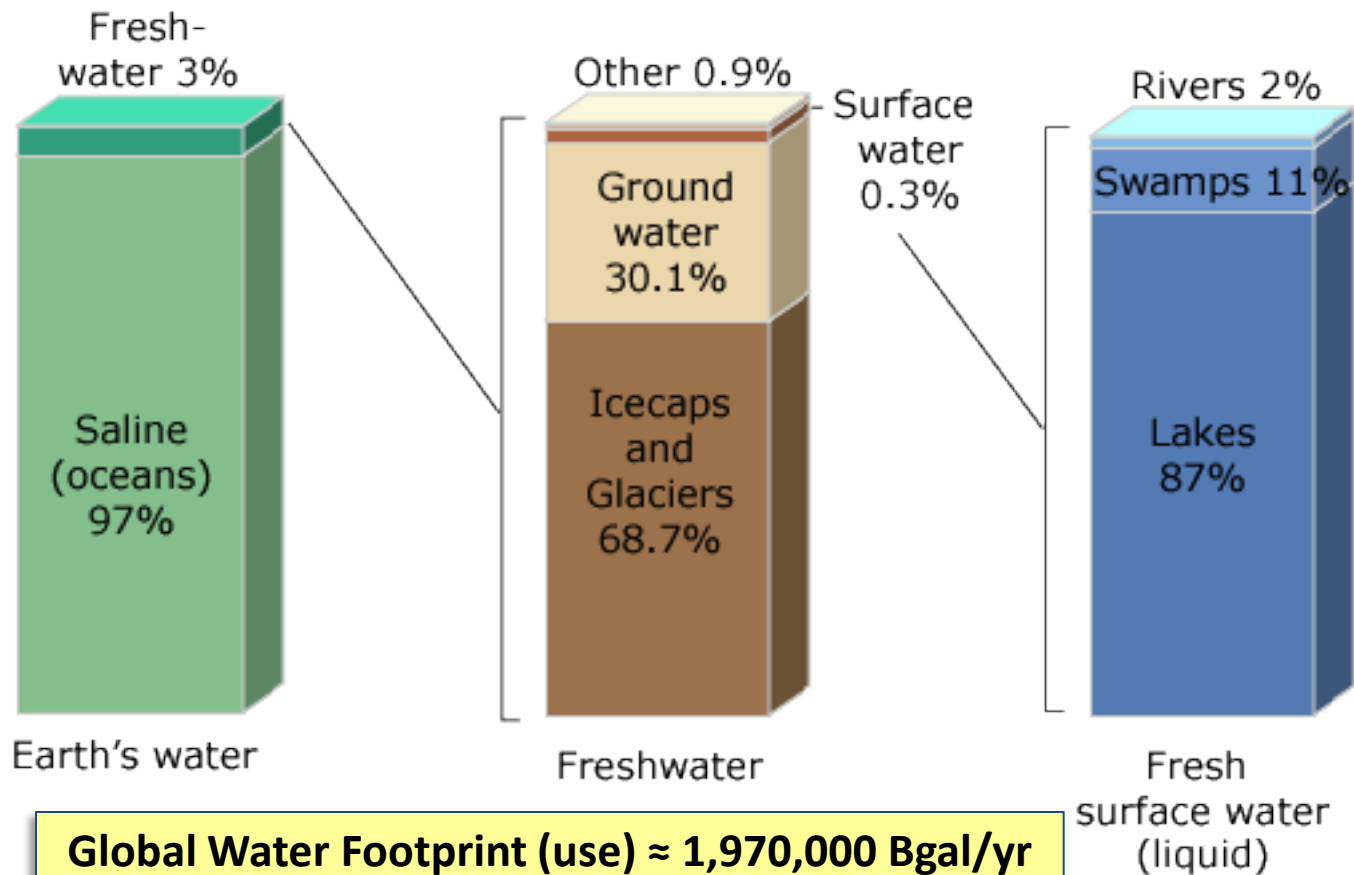


Water Resources

An Economic Attractor?

**Water and Electricity Are
The Backbone Of ANY
Economy**

**NO Water OR Electricity =
NO Economy**



**Global Water Footprint (use) $\approx 1,970,000$ Bgal/yr
 $\approx 330,000$ gal/yr/person**



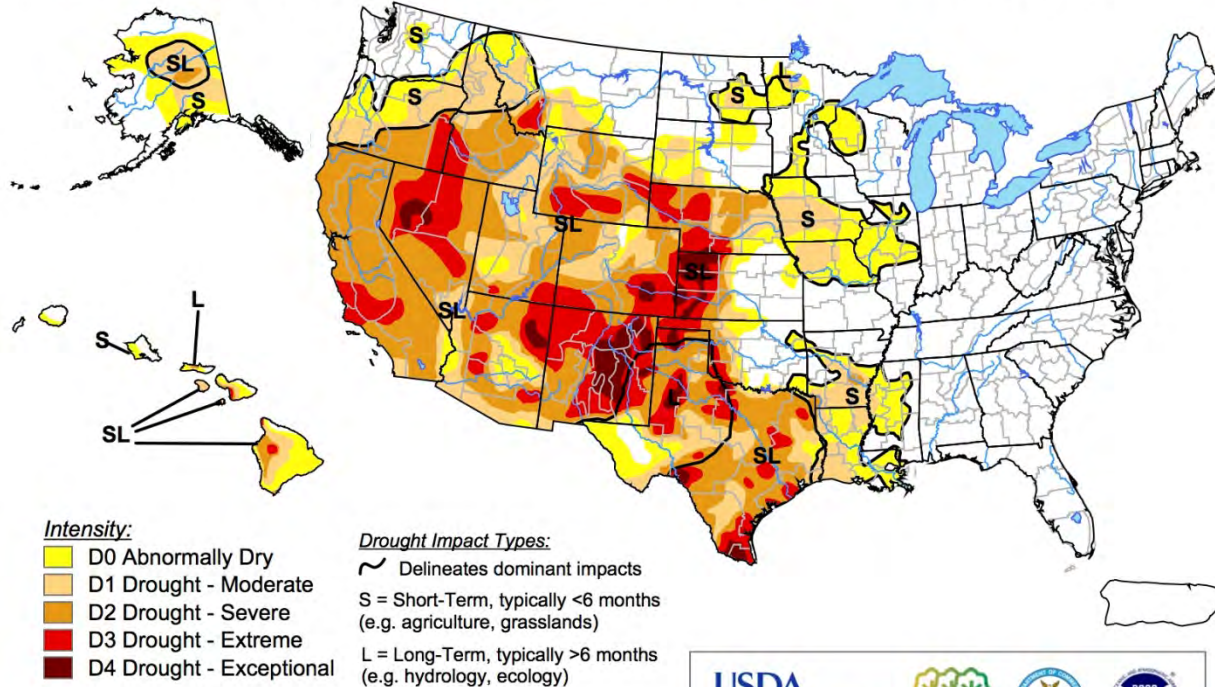
Figure 3.—Cumulative departure from mean monthly precipitation for climatic division 8, water years 1921–89 (data from National Oceanic and Atmospheric Administration, Climatic Data Center).

Persistent Drought

U.S. Drought Monitor

August 13, 2013

Valid 7 a.m. EDT



The Drought Monitor focuses on broad-scale conditions. Local conditions may vary. See accompanying text summary for forecast statements.



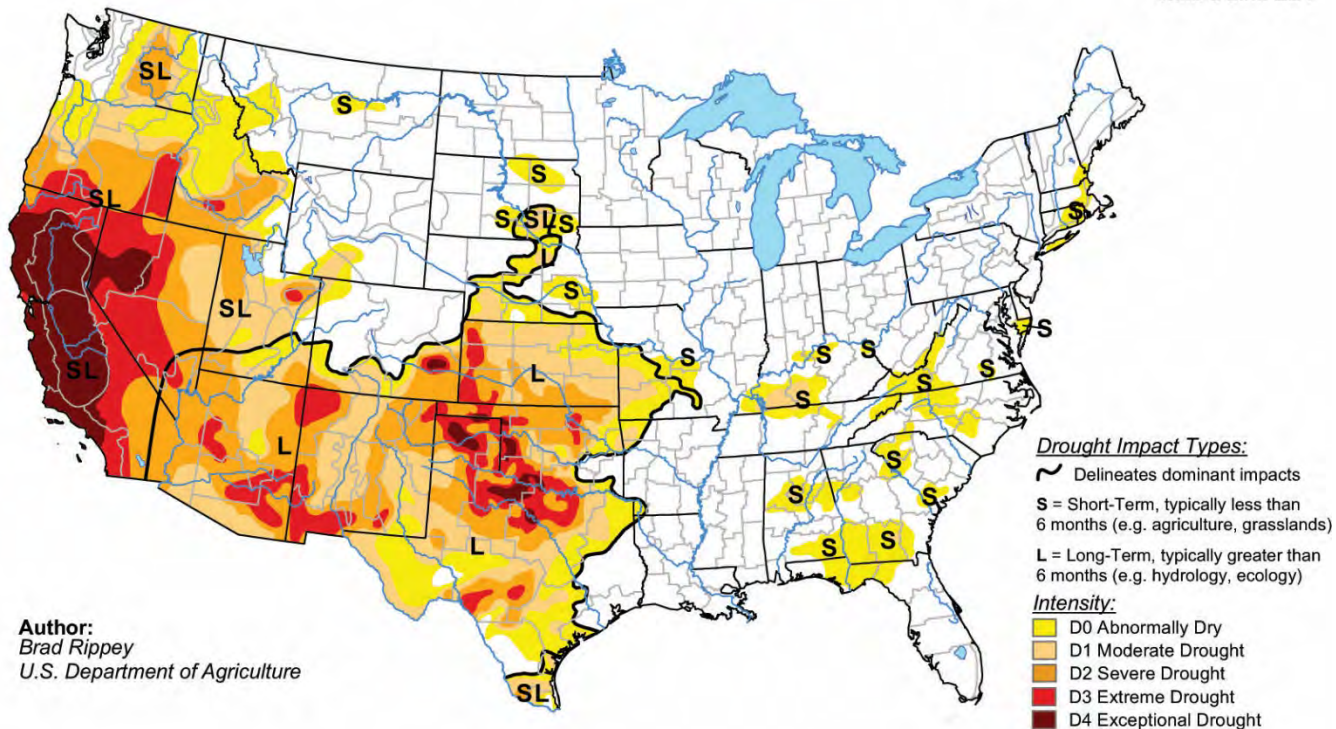
Released Thursday, August 15, 2013

U.S. Drought Monitor

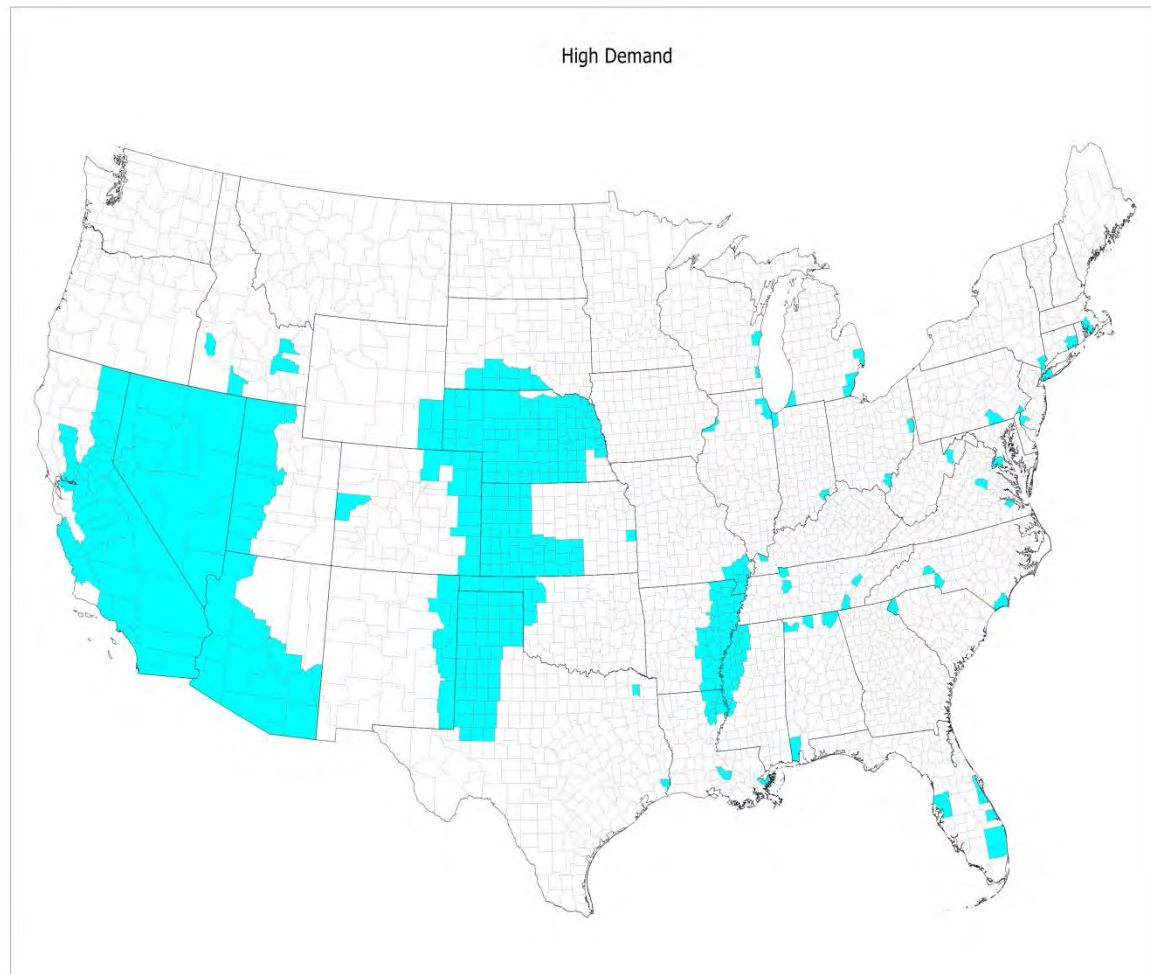
July 29, 2014

(Released Thursday, Jul. 31, 2014)

Valid 8 a.m. EDT



Competition for Water



The Great Lakes Basin



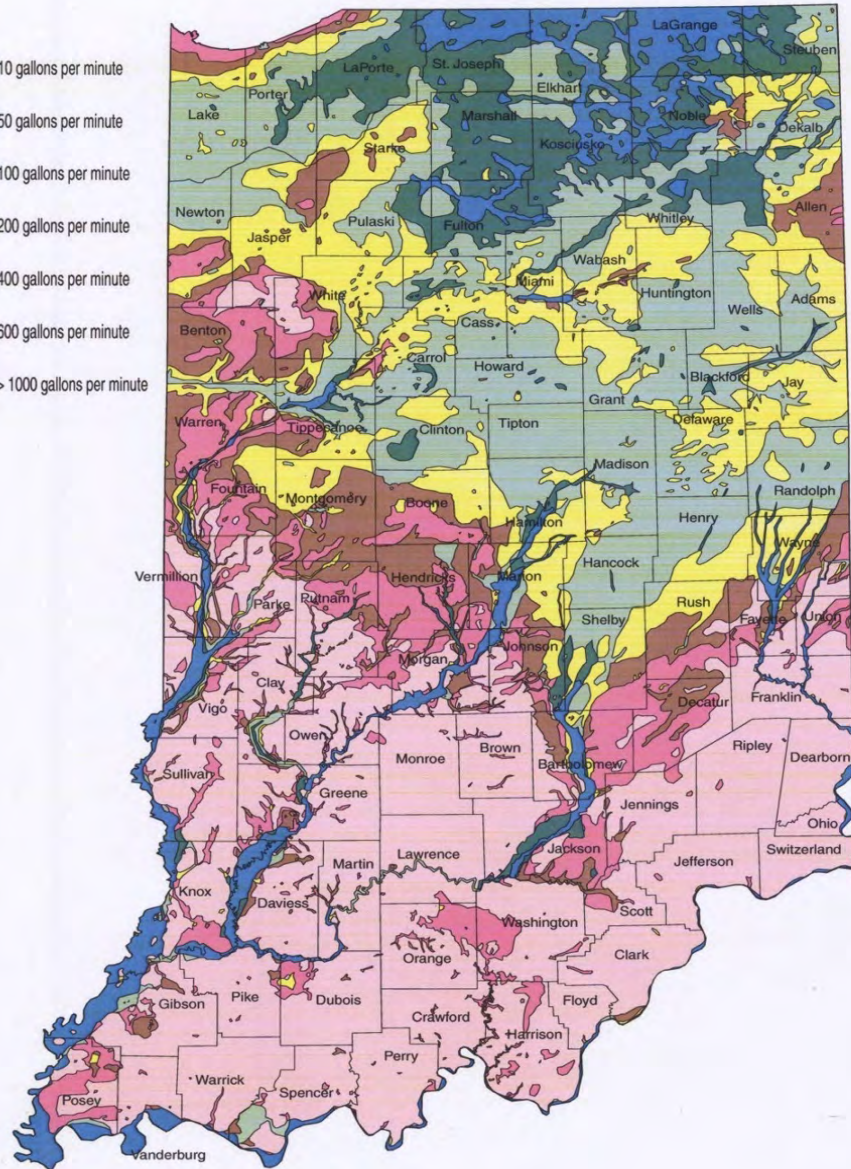
Water Headlines TODAY

- **Oysters and the Apalachicola Bay; FL vs GA**
- **North Texas – outgrow supply by 2060**
- **2013 US Supreme Court – NO to Texas re the OK pipeline to the Red River**
- **CA – no snow – no water – 25% water cuts**
- **NASA – Southwest and Central Plains – worst drought in 1000 years**

Indiana Water Facts

- We presently have no plan for our “water future”.
- Water “**challenges**” from Central Indiana to the Ohio River.
- We need to identify 1) where is the water 2) who needs the water 3) how to get the water to **where** it is needed.
- There is a need for **strong leadership** in this area.
- A **clear and concise plan** needs to be developed outside of a crisis-initiated scenario.

Generalized Ground-Water Availability



IC 14-25-7:

Water Resources Management Act

- Enacted in 1983
- Requires **registration** of all **SWWF** (gw & sw)
- **Facility** defined as greater than 100,000 gpd **capability**
- **Capability** is aggregate of all wells & intakes
- Annual water use **reporting**



Indiana Vision 2025 Released in 2012

Vision 2025 is a comprehensive, multi-year initiative to provide leadership a long-range economic development action plan for Indiana.

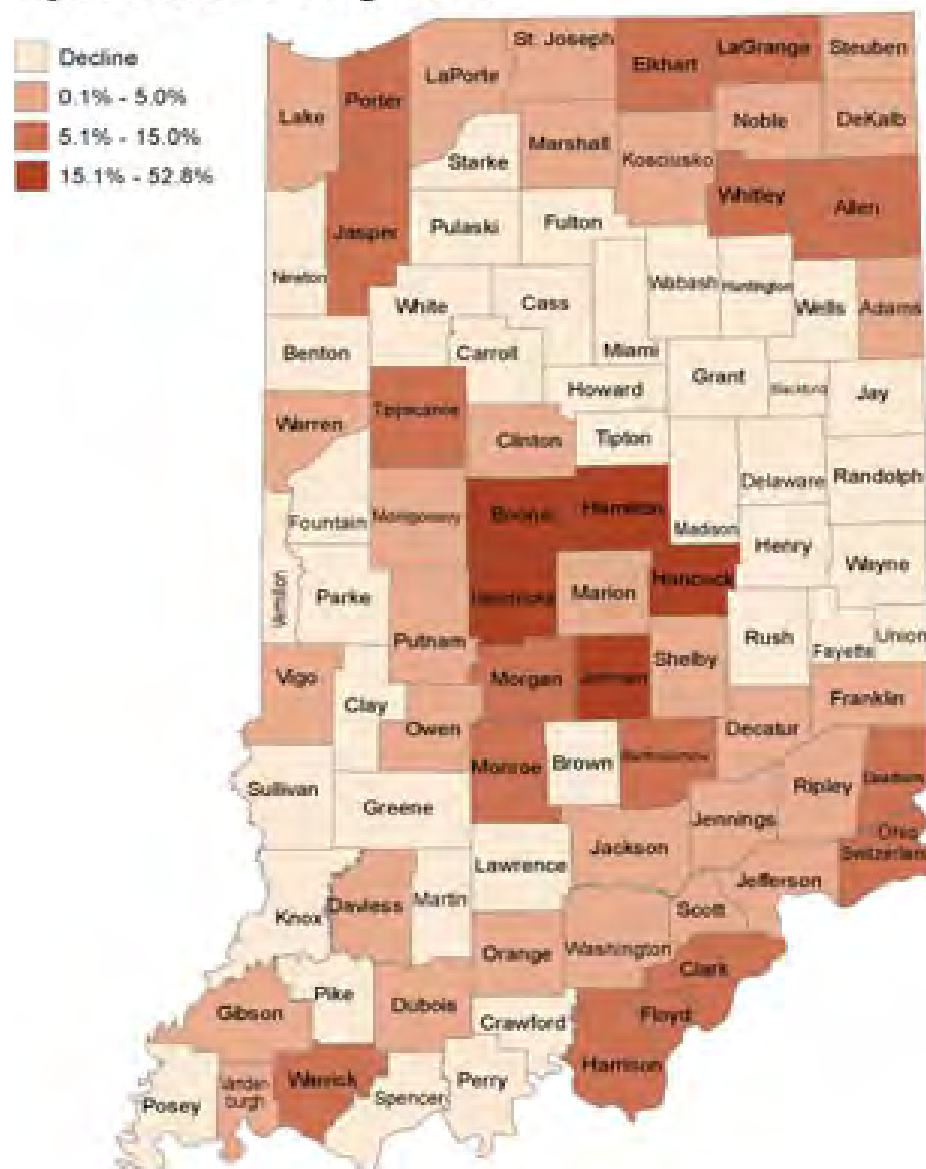
Sets a high bar for our state.

Indiana Chamber Vision 2025

“Water Plan” Statement

Traditional thinking should be challenged as it is essential to **preserve and protect** this valuable resource and recognize that national and global competition requires broader cooperation across the state. Communities must **work together** to utilize Indiana’s advantage and realize potential economic growth. **The result of narrow, local planning is that resource sharing and economies of scale are missed. Indiana must rethink the way it plans, regulates and utilizes its water resources.**

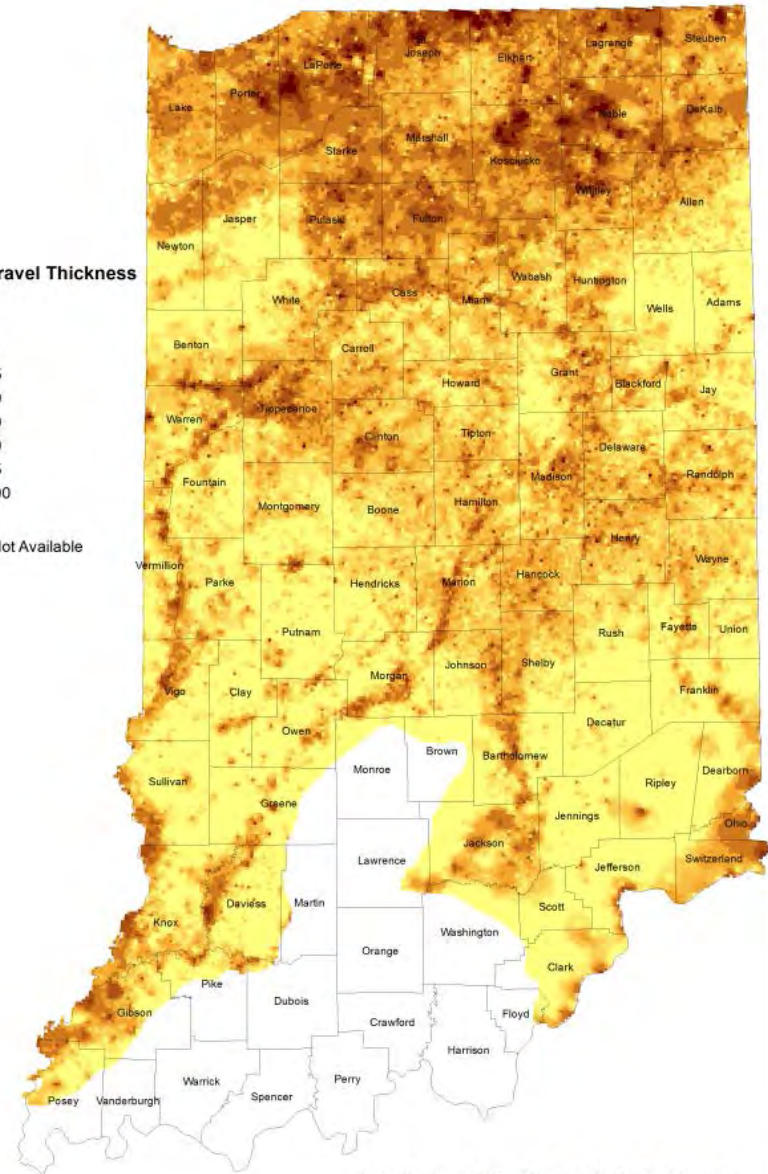
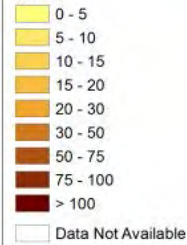
Percent Change in Population April 2000 to July 2009



Source: U.S. Census Bureau
Indiana Business Research Center, March 2010

Estimated Groundwater Storage

Sand & Gravel Thickness (feet)

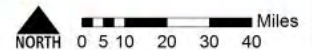


Data Source: United States Geological Survey

Sand & Gravel Thickness for Indiana (feet)

Projection: UTM Zone 16
Coordinate System: NAD 1983

INTERA
GEOSCIENCE & ENGINEERING SOLUTIONS



Water is essential for our state's economic development.

- **Keep business,**
- **Grow business and**
- **Attract business**

2014 Legislative Utilities Study Committee

**“For the next 100 years, water
will be the number one item
for site selection”**

(Larry Gigerich, Ginovus – international site
selector)

FOUR-PRONG EFFORT

- **Legislative**
- **Regulatory/IURC**
- **Governor Pence**
- **Indiana Chamber's Vision 2025**

Indiana Vision 2025

Released in 2012

Vision 2025 is a comprehensive, multi-year initiative to provide leadership a long-range economic development action plan for Indiana.

Sets a high bar for our state.

Indiana Chamber Vision 2025

“Water” Statement

Traditional thinking should be challenged as it is essential to **preserve and protect** this valuable resource and recognize that national and global competition requires broader cooperation across the state. Communities must **work together** to utilize Indiana’s advantage and realize potential economic growth. **The result of narrow, local planning is that resource sharing and economies of scale are missed. Indiana must rethink the way it plans, regulates and utilizes its water resources.**

Indiana Chamber Vision 2025

Water Study Release

August , 2014

CHALLENGES

- Barely adequate local supplies in Central Indiana
- Limited groundwater in some areas
- Infrastructure investment in the South
- Regional planning is needed

Recommendations

- Create **awareness** for the need for water supply planning: *talk to people around the state*
- Create capacity to **coordinate** efforts: *establish a planning lead and fund water research*
- Create a robust system for **monitoring** water resources: *~100 new monitoring wells and track low-flow*
- Create a systematic approach for **data analysis**: *determine aquifer sustainability and yield*
- Create a framework for **cooperative management**: *model reservoirs and streams to optimize*
- It takes at least **three years** to prepare for implementation: *this needs to be done by an entity that will do this right.*

2015 Legislative Action

SB 473 “Voluntary monitoring of water resources”

- IDNR to:
 - Receive **voluntary** ground and surface water **data**
 - **Train** the volunteers
 - Identify **locations**
 - Ensure **adequacy**
 - **Verify** thru independent sampling

SB 474: Analysis of water utility planning and needs

- IFA conduct an analysis of the **planning and needs** of water utilities of:
 - The **15** most populous cities in the state
 - Five** other cities with $\leq 10,000$ people
 - Identify and assess** state agencies involved in water related activities

SB 312: Tank reporting and water threat minimization

- Affects **ONLY** surface water intakes (<40)
- **Register** tanks upstream 25 miles X $\frac{1}{4}$ mi.
- **Develop** a surface water quality threat minimization and response **plan**
- **ERB** to develop rules related to registration and the “Threat Plans”.

HB 1350: IDEM “catch-all” bill

**Authorization for
“in lieu” mitigation**

Water/Sewer Utilities

- **HB1319: Allows purchase of “distressed utilities”**
- **SB 177 and SB 516: Increases the DSIC cap from 5% to 10%; only for aging infrastructure; if >10% = rate case**

GOOD NEWS!

- We can invent our water future.
- We do have the water resources.
- But – we must take charge NOW and make smart decisions.
- We must all work together!

OUR ENVIRONMENT OUR RESPONSIBILITY

