

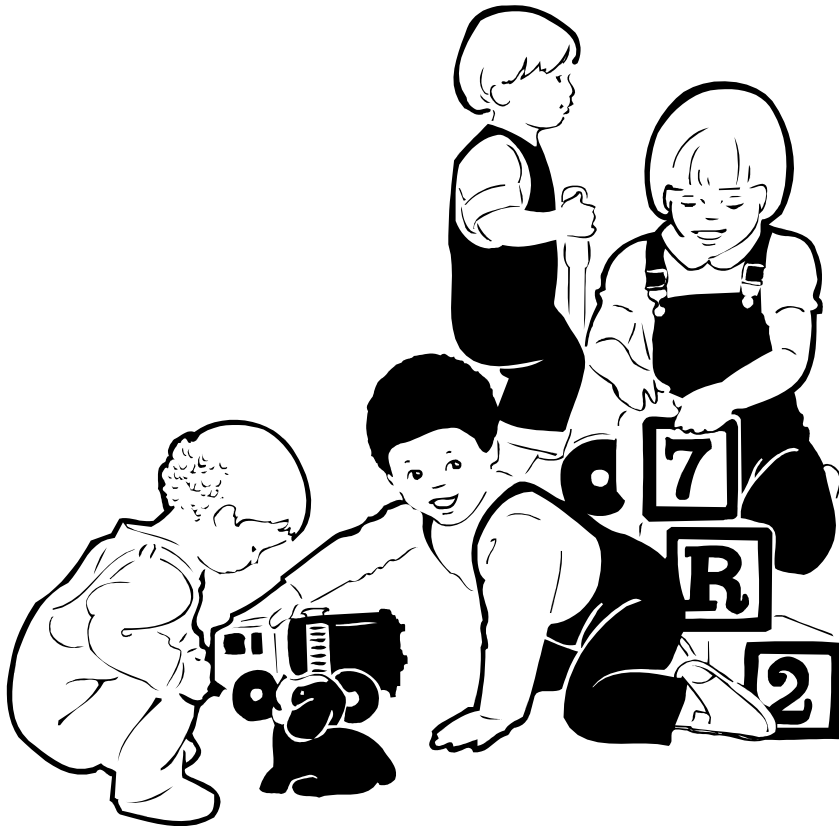


Indiana Dept. of Environmental Management

**PROTECTING CHILDREN FROM
ENVIRONMENTAL HEALTH
THREATS**

***5-STAR ENVIRONMENTAL
RECOGNITION FOR
CHILD CARE FACILITIES***

Why is IDEM focusing on Child Care Facilities?

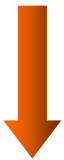


- ☑ Over 100,000 Hoosier children attend daycare
- ☑ Children not little adults

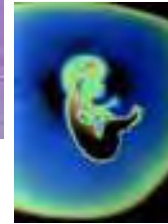
Children are not little adults



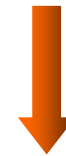
Different
Environmental
Exposures



Physiological
Differences

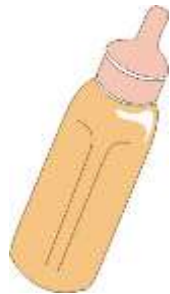


Windows of
Vulnerability
During Development



Different adverse health effects in children and adults

Children drink, eat, and breathe more per pound of body weight



Infants



Adults

Environmental Contaminants can Affect Children Differently than Adults



- ⌘ Children may be more highly exposed to contaminants
- ⌘ Children may be more vulnerable to the toxic effects of contaminants.

Why be concerned about environmental health for children at your facility?

- ☒ Was your building built prior to 1978?
- ☒ Do you have gas heat or gas appliances?
- ☒ Do you use pesticides?
- ☒ Have you or are you renovating?
- ☒ Do you know the 2nd leading cause of lung cancer?



- ☒ Do you have a mercury thermostat?
- ☒ Do you have leaks or water damage?

The Bad News



⌘ Children still have elevated blood lead levels.

⌘ Asthma rates increasing.

⌘ Concerns of mercury exposure in the womb.

⌘ Disproportionate impact of childhood diseases on low-income and minority children.

What can you do?

- ⌘ Take a look at your childcare facility.
- ⌘ Identify areas that may be putting children at risk of being exposed to environmental dangers.



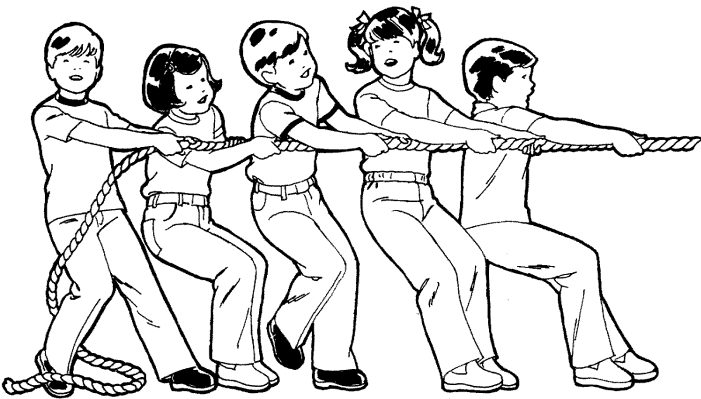
5-Star Environmental Recognition for Child Care Facilities



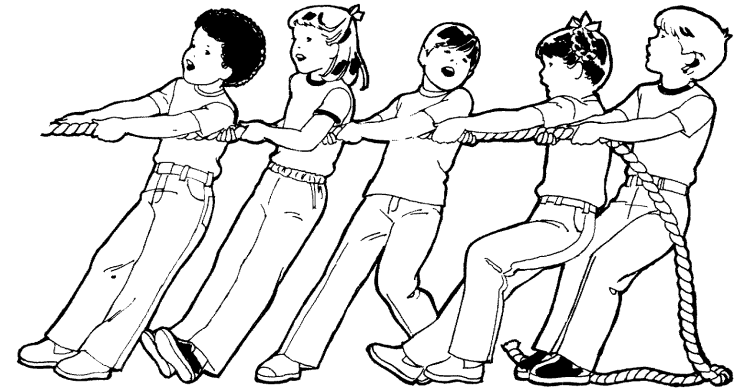
⌘ Recognizes those facilities going beyond compliance

Why should a facility participate?

⌘ Educational
Tool



⌘ Marketing
Strategy



⌘ Free Stuff!!

Three Core Issues

⌘ Environmental Threats

⌘ Health and Safety

⌘ Environmental
Stewardship

— See application



Protecting Children from Environmental Threats



⌘ Lead

⌘ Mercury

⌘ Radon

⌘ Asbestos

⌘ PCBs

⌘ Pesticides

⌘ Secondhand Smoke

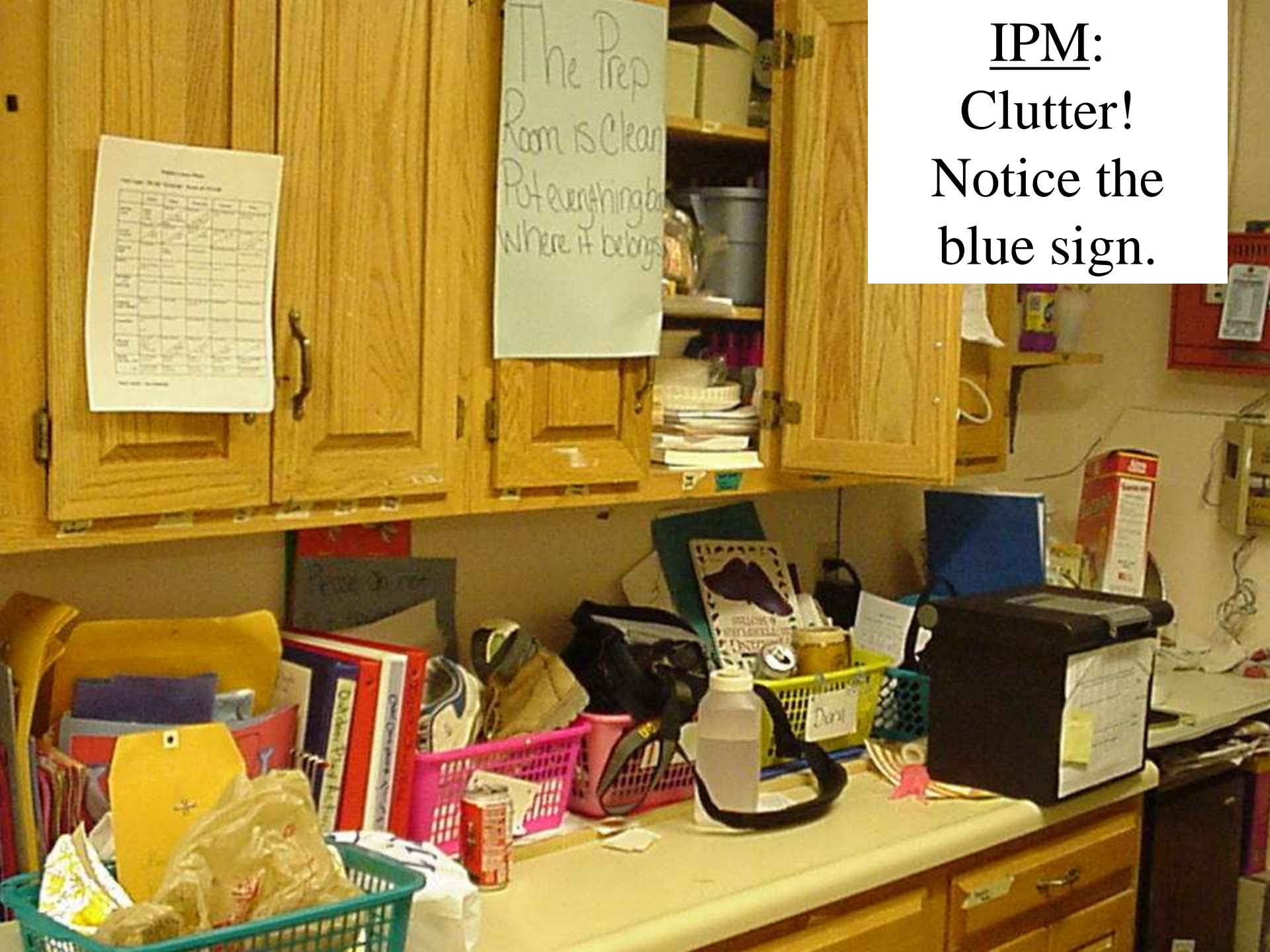
⌘ Carbon Monoxide



IPM:

Areas under and around dumpster should be cleaned regularly.

IPM:
Clutter!
Notice the
blue sign.





IPM:

More clutter! Attracts mice and spiders such as the brown recluse.





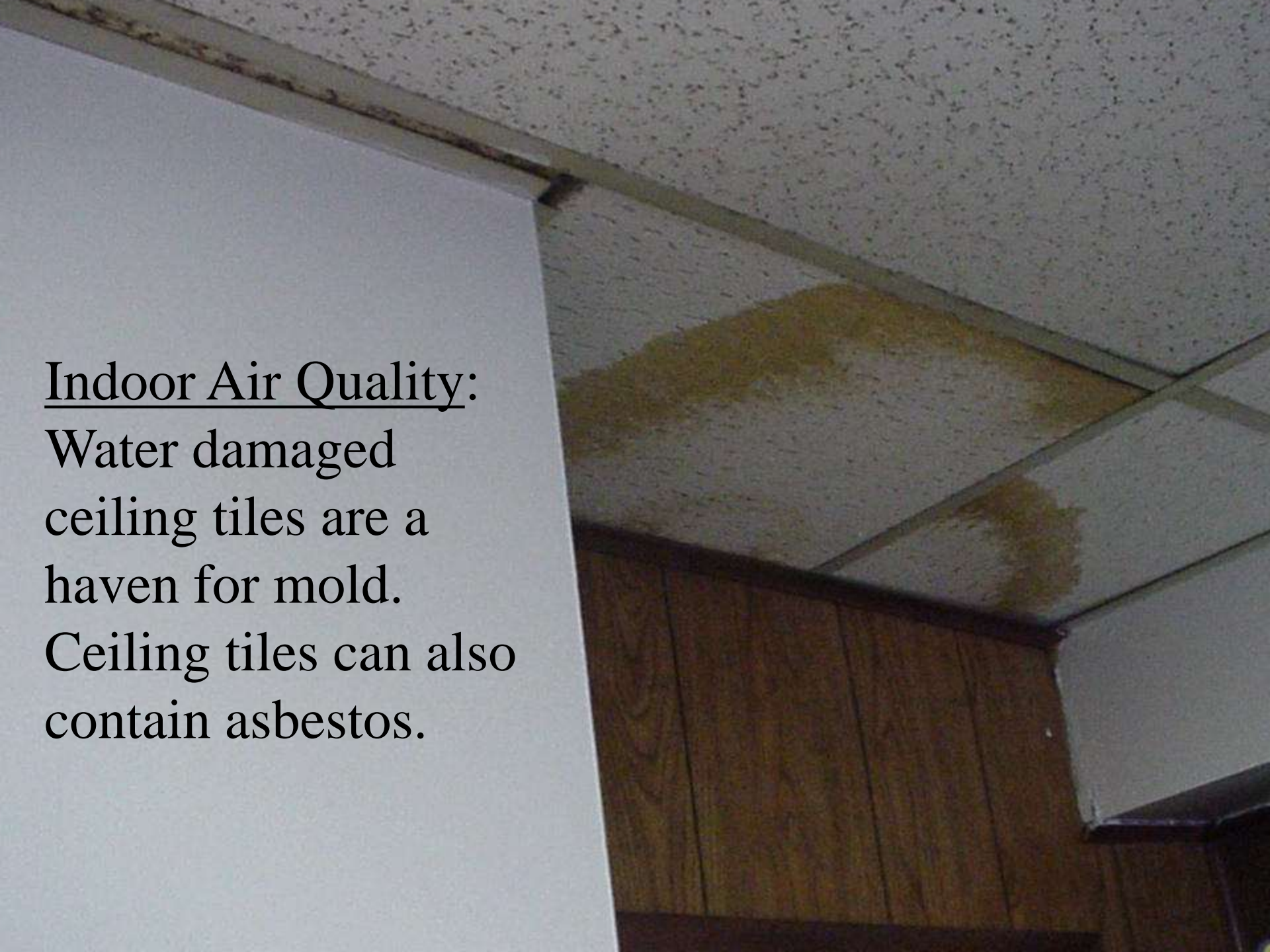
IPM:

Mouse poison found in a childcare facility. Mice will pick up pieces and trail them throughout classrooms where children may mistake it for candy.

Indoor Air Quality:

Water damaged
ceiling tiles are a
haven for mold.

Ceiling tiles can also
contain asbestos.





Indoor Air Quality:

Mold is very common in childcare facilities. It triggers asthma and allergies and some types of mold are even deadly.



Chemical Safety:
Labeling Chemicals (Bleach Bottles)

Asthma:

Pets with fur can cause allergies and asthma attacks.
Their food also attracts pests.





Environmental Stewardship:
Reusable dishes instead of styrofoam.

For more information.....



⌘ www.IN.gov/idem/childcare

⌘ On IDEM's 5-Star Program

☒ Karen Teliha 317-233-5555