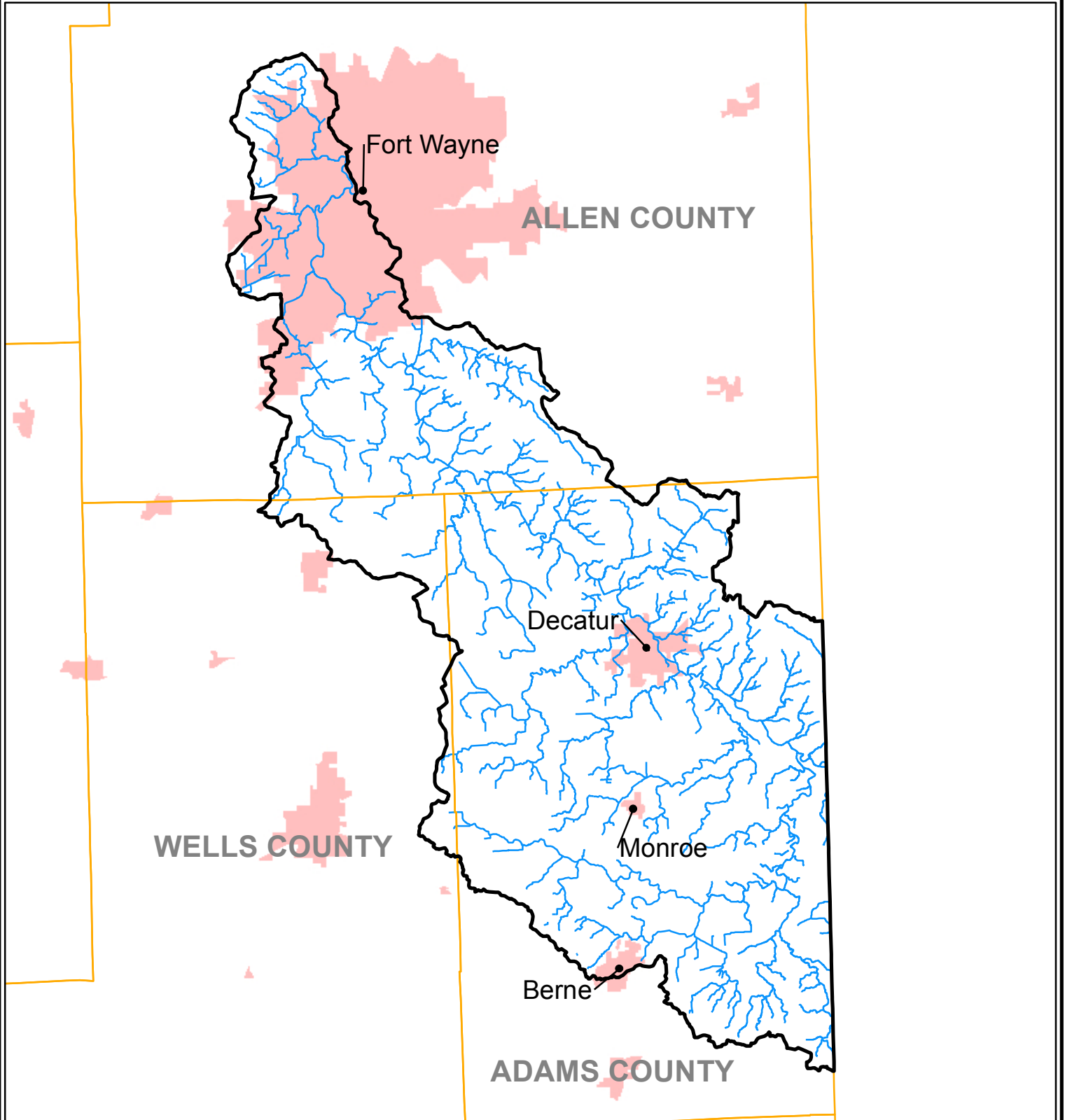
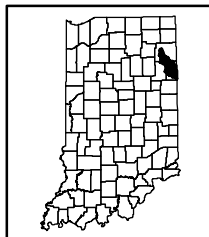
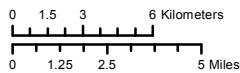


St. Marys River WMP 7-184



This map is intended to serve as an aid in graphic representation only. This information is not warranted for accuracy or other purposes.

Mapped By:
Tom Reeve, Office of Water Quality
Date: 06/15/2012



Legend

- Watershed
- Stream
- Incorporated Area
- County

Sources:
Data - Obtained from the State of Indiana Geographical Information Office Library
Map Projection: UTM Zone 16 N **Map Datum:** NAD83