



Indiana Department of Environmental Management Office of Water Quality Wetlands Section

Publication Date:
February 6, 2026

Closing Date:
February 24, 2026

IDEM ID Number:
2025-865-20-ENH-WQC

Corps of Engineers ID Number:
WP 2012-00268-120-N26

PUBLIC NOTICE

To all interested parties:

This letter shall serve as a formal notice of the receipt of an application for **Section 401 Water Quality Certification** by the Indiana Department of Environmental Management (IDEM). The purpose of the notice is to inform the public of active applications submitted for water quality certification under Section 401 of the Clean Water Act (33 U.S.C. § 1341) and to solicit comments and information on any impacts to water quality related to the proposed project. IDEM will evaluate whether the project complies with Indiana's water quality standards as set forth at 327 IAC 2.

- | | | | |
|--------------------------------|--|------------------|--|
| 1. Applicant: | Indiana Michigan Power Company
Attention: Jonathan Magalski
1 Riverside Plaza
Columbus, OH 43215 | 2. Agent: | Stantec
Attention: Christina Svoboda
708 Roosevelt Road
Walkerton, IN 46574 |
| 3. Project location: | Latitude 41.693366, Longitude - 86.965794
Just east of the Johnson Street Bridge over the St. Joseph River in the city of Elkhart, Elkhart County | | |
| 4. Affected waterbody: | St. Joseph River | | |
| 5. Project Description: | Stabilization of the Elkhart Hydroelectric Dam. The downstream spillway will be stabilized through the replacement of 129 weep holes, installation of 121 new weep holes, grouting of voids, installation of a concrete load transfer beam, and installation of 11 anchors in the existing 30-foot concrete rollway section. The total area of impact to the riverbank will amount to 0.09 acre. | | |

Additional information may be found online at <https://www.in.gov/idem/5474.htm>

Comment period: Any person or entity who wishes to submit comments or information relevant to the aforementioned project may do so by the closing date noted above. Only comments or information related to water quality or potential impacts of the project on water quality can be considered by IDEM in the water quality certification review process.

Public Hearing: Any person may submit a written request that a public hearing be held to consider issues related to water quality in connection with the project detailed in this notice. The request for a hearing should be submitted within the comment period to be considered timely. The request should also state the reason for the public hearing as specifically as possible to assist IDEM in determining whether a public hearing is warranted.

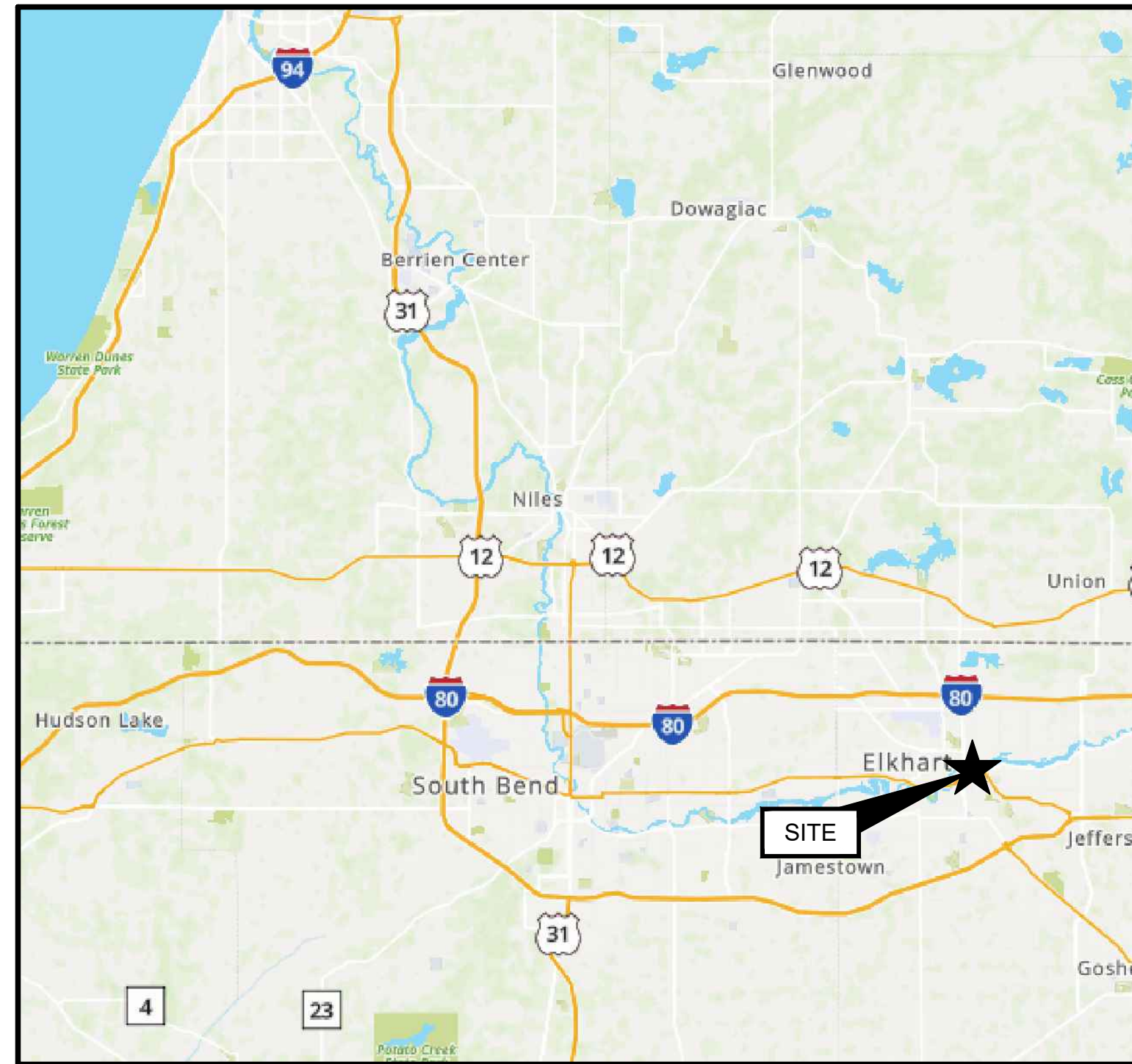
Questions? Additional information may be obtained from Emersyn Harriman, Project Manager, by phone at 317-409-7580 or by e-mail at eharrima@idem.in.gov. Please address all correspondence to the project manager and reference the IDEM project identification number listed on this notice. Indicate if you wish to receive a copy of IDEM's final decision. Written comments and inquiries may be forwarded to -

Indiana Department of Environmental Management
100 North Senate Avenue
MC65-42 WQS IGCN 1255
Indianapolis, Indiana 46204-2251 FAX: 317/232-8406

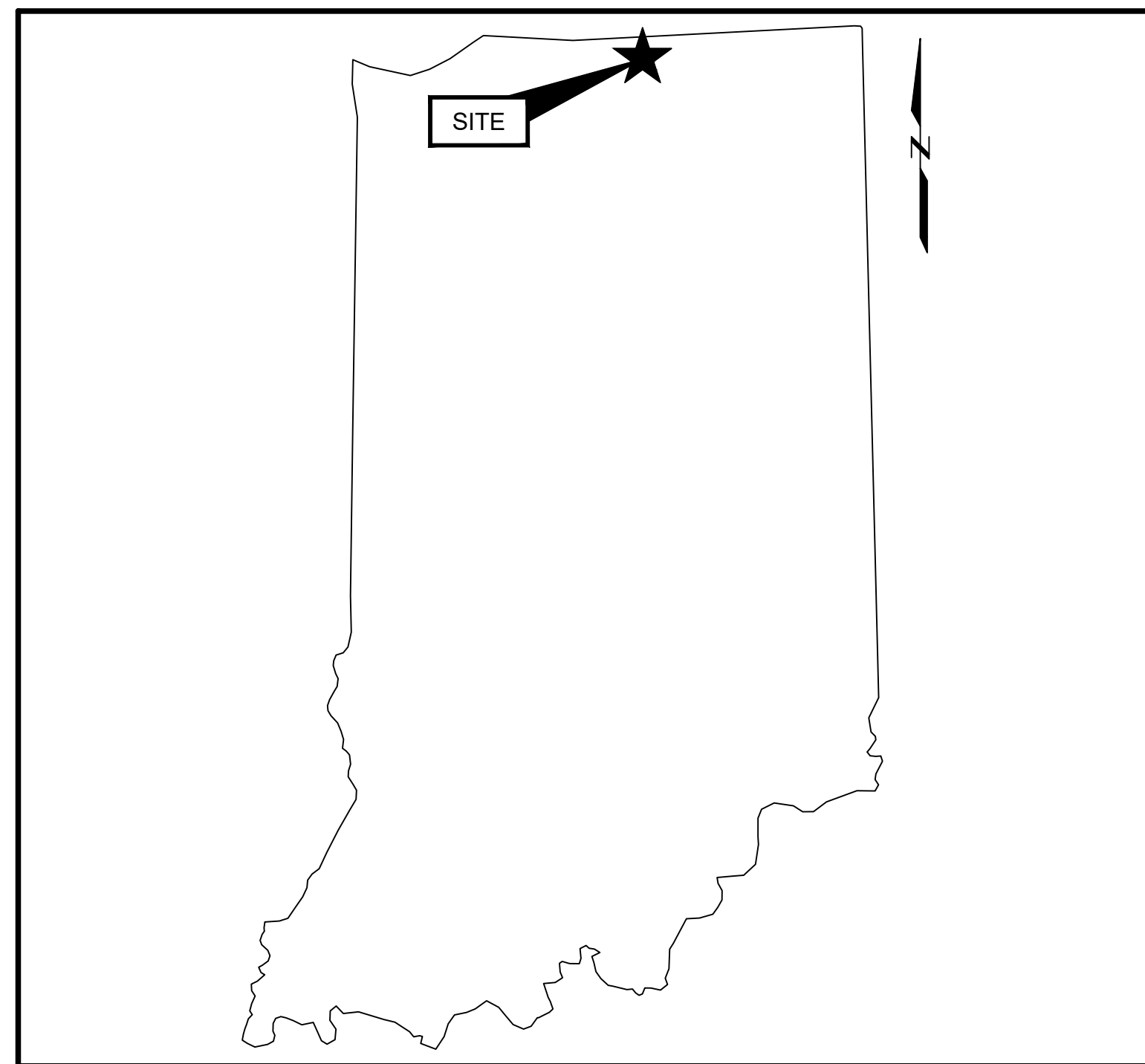
ELKHART HYDROELECTRIC DAM SPILLWAY STABILIZATION DESIGN

FERC PROJECT NO. 2651
GEI PROJECT NO. 2100325
AMERICAN ELECTRIC POWER

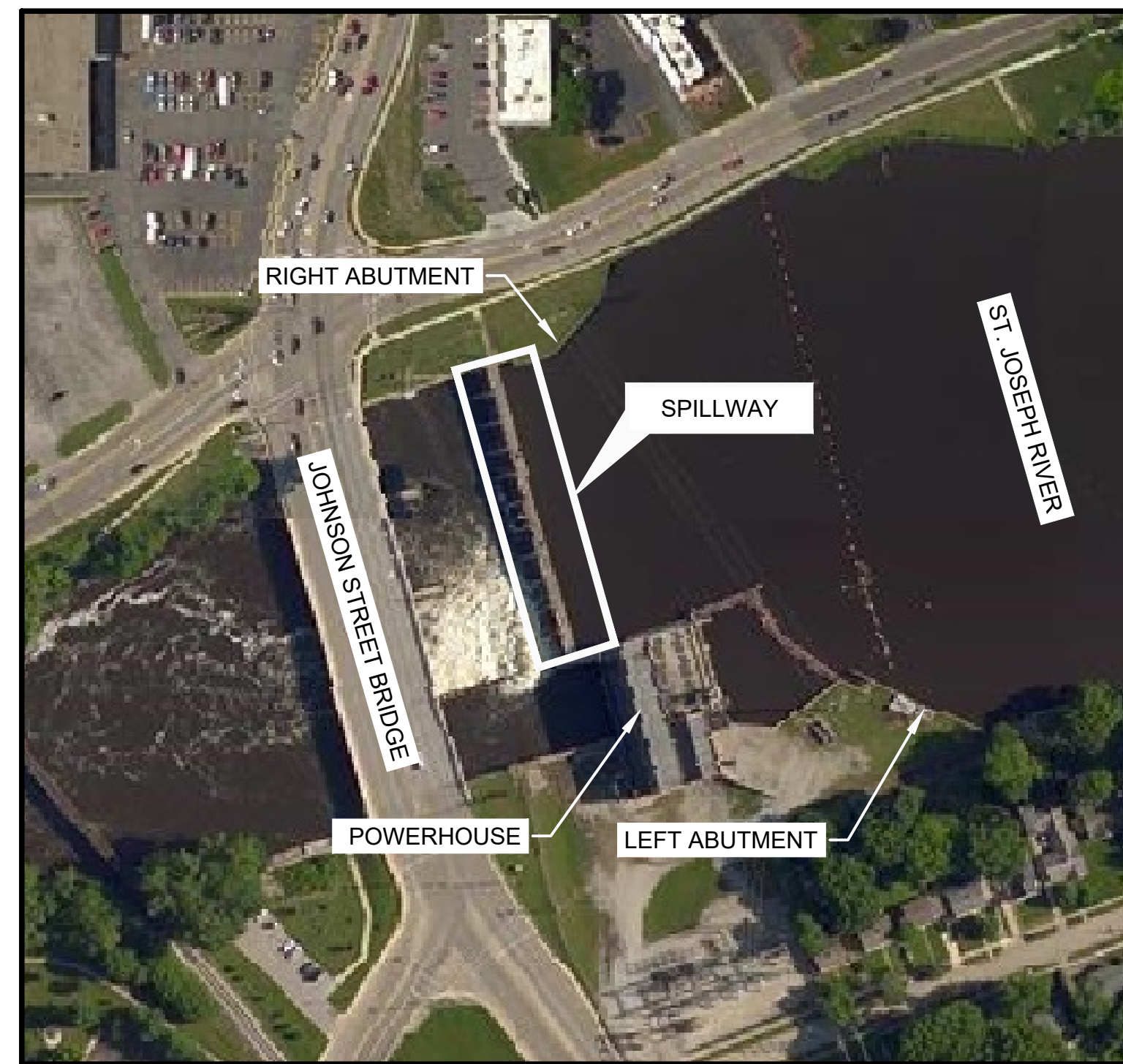
THIS DOCUMENT, AND THE IDEAS AND DESIGNS INCORPORATED HEREIN, IS AN INSTRUMENT OF PROFESSIONAL SERVICE, IS THE PROPERTY OF GEI CONSULTANTS AND IS NOT TO BE USED, IN WHOLE OR IN PART, FOR ANY OTHER PROJECT WITHOUT THE WRITTEN AUTHORIZATION OF GEI CONSULTANTS.



SOURCE: Mapquest
COUNTY MAP
(NOT TO SCALE)



STATE MAP
(NOT TO SCALE)



SOURCE: Google Maps
SITE LOCATION MAP
(NOT TO SCALE)

PREPARED FOR:
AMERICAN ELECTRIC POWER
1 RIVERSIDE PLAZA
COLUMBUS, OHIO
(614) 716-1725



PREPARED BY:
GEI CONSULTANTS, INC.
1600 ASPEN COMMONS
SUITE 680
MIDDLETON, WI 53562
(608) 807-0502



SHEET LIST TABLE		
SHEET NO.	PAGE NO.	SHEET TITLE
G-01	1	COVER SHEET
G-02	2	GENERAL NOTES & LEGEND (1 OF 2)
G-03	3	GENERAL NOTES & LEGEND (2 OF 2)
G-04	4	OVERALL AERIAL SITE PLAN
G-05	5	BORING AND INSTRUMENTATION PLAN
G-06	6	BORING AND INSTRUMENTATION PROFILE
G-07	7	BORING AND INSTRUMENTATION SECTION
G-08	8	PROJECT CONTROL, EROSION AND SEDIMENT CONTROL PLAN
G-09	9	EROSION AND SEDIMENT CONTROL DETAILS
C-01	10	EXISTING CONDITIONS SECTION
C-02	11	EXISTING WEEPS PLAN VIEW
C-03	12	EXISTING WEEPS SECTION VIEW
C-04	13	WEEPS PLAN VIEW
C-05	14	WEEPS SECTION VIEW
C-06	15	ANCHOR DESIGN - PLAN
C-07	16	ALTERNATIVE 1 - TYPICAL SECTION AT ANCHORS
C-08	17	TYPICAL SECTION AT ANCHORS
C-09	18	TYPICAL SECTION BETWEEN ANCHORS 2
C-10	19	TYPICAL DETAILS (1 OF 3)
C-11	20	TYPICAL DETAILS (2 OF 3)
C-12	21	TYPICAL DETAILS (3 OF 3)
C-13	22	GENERAL WEEP CONSTRUCTION SEQUENCE (1 OF 2)
C-14	23	GENERAL WEEP CONSTRUCTION SEQUENCE (2 OF 2)
C-15	24	WORKING PLATFORM - PLAN
C-16	25	WORKING PLATFORM - SECTION

ISSUED FOR BID - NOT FOR CONSTRUCTION

Attention:				
NO.	DATE	ISSUE/REVISION	APP	
1	10/9/2025	ISSUED FOR BID	RJA	

Engineer of Record:	R. ANDERSON
Checked:	A. BAXTER
Drawn:	A. TOTO
Submitted By:	A. BAXTER
P.E. Number:	IN-19300393



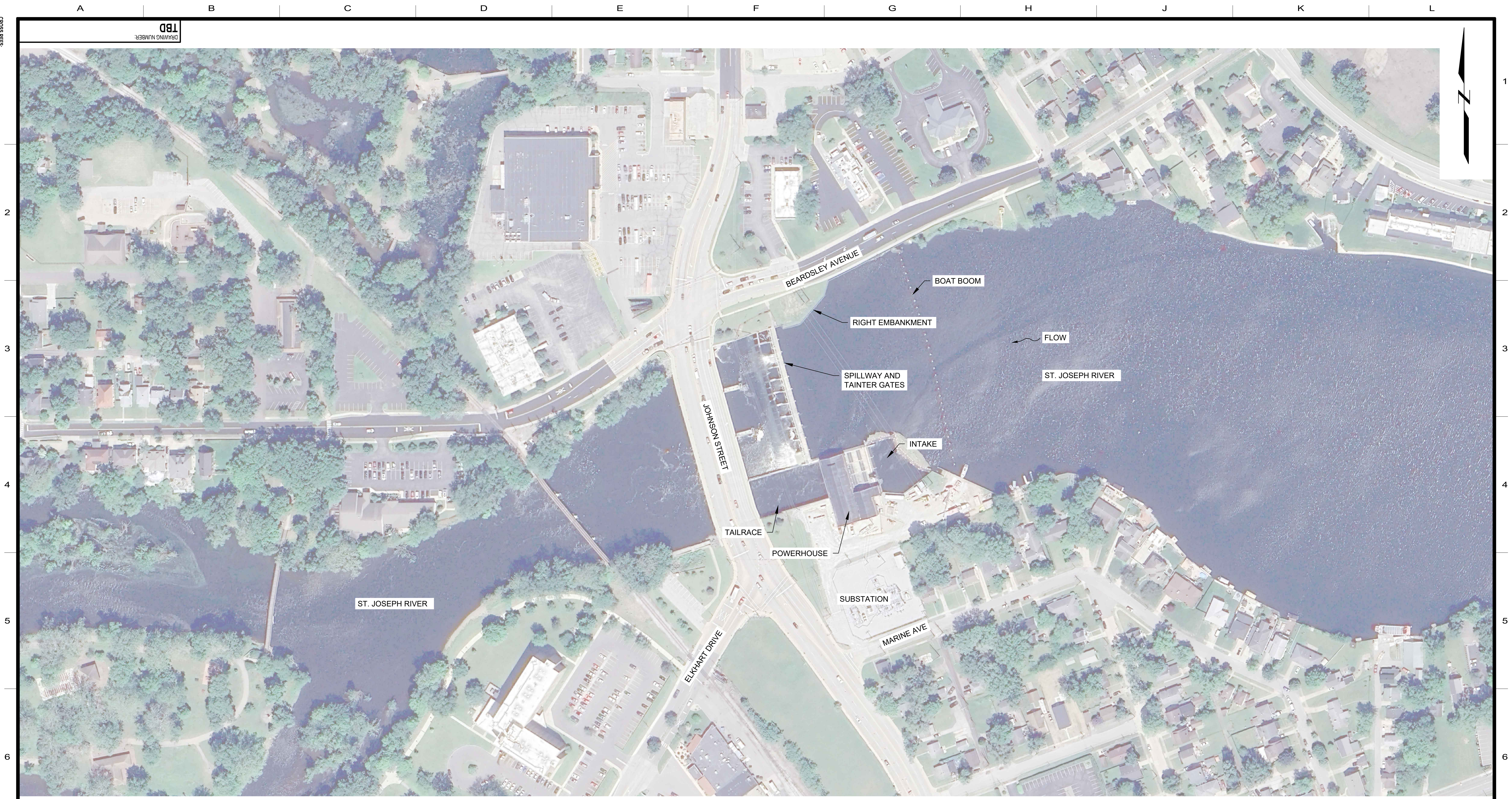
GEI DWG. NO.
G-01
GEI SHEET NO.
1 OF 25

DATE	NO.	DESCRIPTION	APPD.
REVISIONS			

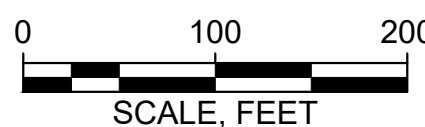
THIS DRAWING IS CLASSIFIED AS:
AEP CONFIDENTIAL
REFERENCE AEP'S CORPORATE INFORMATION SECURITY POLICY
THIS DRAWING IS THE PROPERTY OF THE AMERICAN ELECTRIC POWER SERVICE CORP. AND IS LOANED UPON CONDITION THAT IT IS NOT TO BE REPRODUCED OR COPIED, IN WHOLE OR IN PART, OR USED FOR FURNISHING INFORMATION TO ANY PERSON WITHOUT THE WRITTEN CONSENT OF THE AEP SERVICE CORP. OR FOR ANY PURPOSE DETRIMENTAL TO THEIR INTEREST, AND IS TO BE RETURNED UPON REQUEST.

INDIANA MICHIGAN POWER COMPANY
ELKHART HYDRO PLANT
ELKHART INDIANA
DRAWING TYPE
COVER SHEET

UNIT: TBD	DRAWING NUMBER: TBD	REV: 0
SCALE: AS NOTED	DISCIPLINE	
DR:	DOCUMENT PREPARED BY GEI	
CH:		
SUP:		
ENG:		
DATE:	APPROVED BY	
AEP AMERICAN ELECTRIC POWER		AEP SERVICE CORP. 1 RIVERSIDE PLAZA COLUMBUS, OH 43215



TBD
DRAWING NUMBER:



ISSUED FOR BID - NOT FOR CONSTRUCTION

Attention:				
NO.	DATE	ISSUE/REVISION	APP	
1	10/9/2025	ISSUED FOR BID	RJA	

Engineer of Record: R. ANDERSON
 Checked: A. BAXTER
 Drawn: A. TOTO
 Submitted By: A. BAXTER
 P.E. Number: IN-19300393



GEI DWG. NO.
G-04
 GEI SHEET NO.
4 OF 25

DATE	NO.	DESCRIPTION	APPD.
REVISIONS			

THIS DRAWING IS CLASSIFIED AS:
AEP CONFIDENTIAL
 REFERENCE AEP'S CORPORATE INFORMATION SECURITY POLICY
THIS DRAWING IS THE PROPERTY OF THE AMERICAN ELECTRIC POWER SERVICE CORP. AND IS LOANED UPON CONDITION THAT IT IS NOT TO BE REPRODUCED OR COPIED, IN WHOLE OR IN PART, OR USED FOR FURNISHING INFORMATION TO ANY PERSON WITHOUT THE WRITTEN CONSENT OF THE AEP SERVICE CORP. OR FOR ANY PURPOSE DETRIMENTAL TO THEIR INTEREST, AND IS TO BE RETURNED UPON REQUEST.

INDIANA MICHIGAN POWER COMPANY
ELKHART HYDRO PLANT
 ELKHART INDIANA
 DRAWING TYPE
OVERALL AERIAL SITE PLAN

UNIT: TBD	DRAWING NUMBER: TBD	REV: 0
SCALE: AS NOTED	DISCIPLINE	
DR:	DOCUMENT PREPARED BY GEI	
CH:		
SUP:		
ENG:		
DATE:		
APPROVED BY		
AEP AMERICAN ELECTRIC POWER		AEP SERVICE CORP. 1 RIVERSIDE PLAZA COLUMBUS, OH 43215

CROSS REF.

2

3

4

5

6

7

1

2

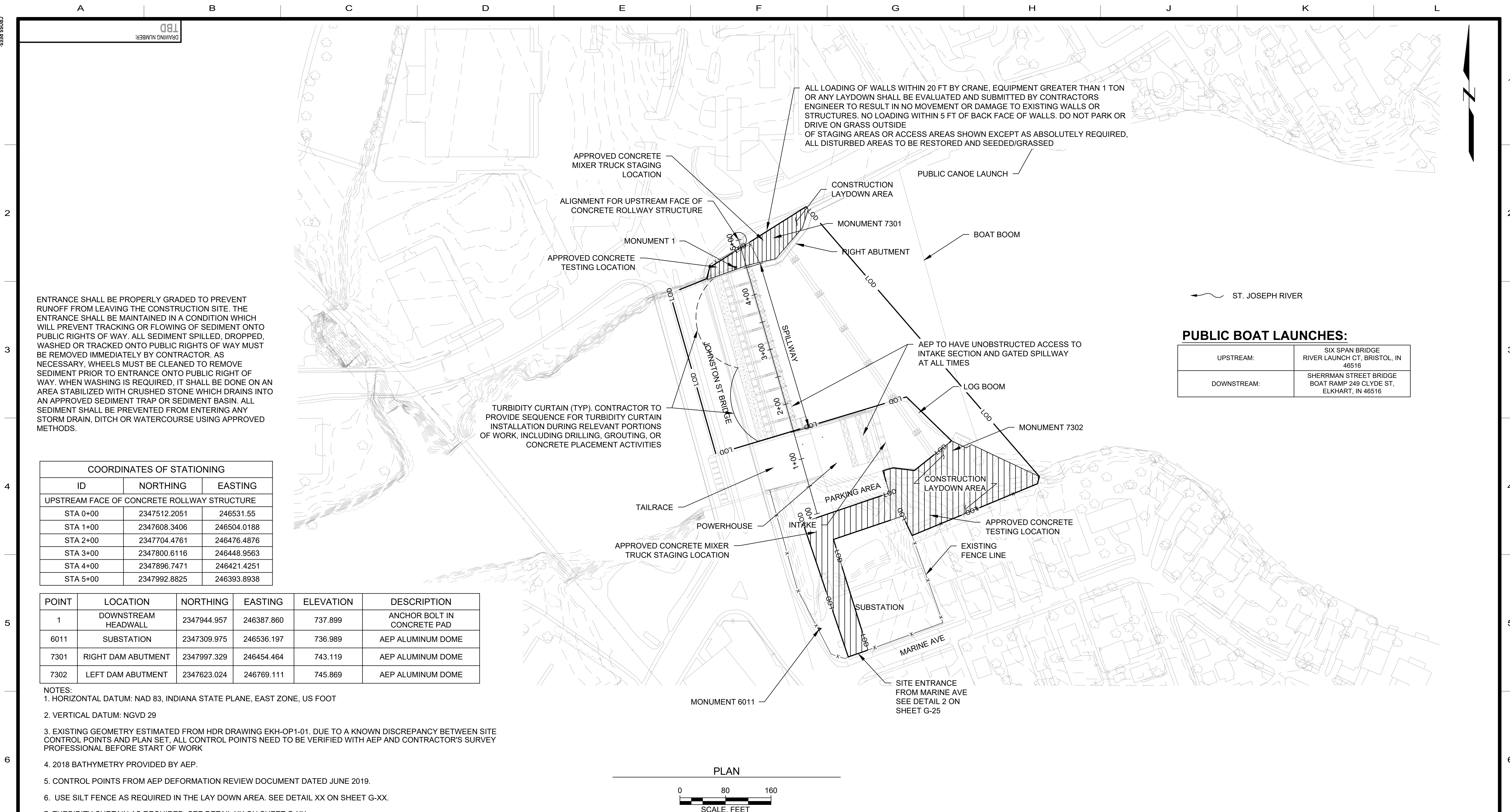
3

4

5

6

7

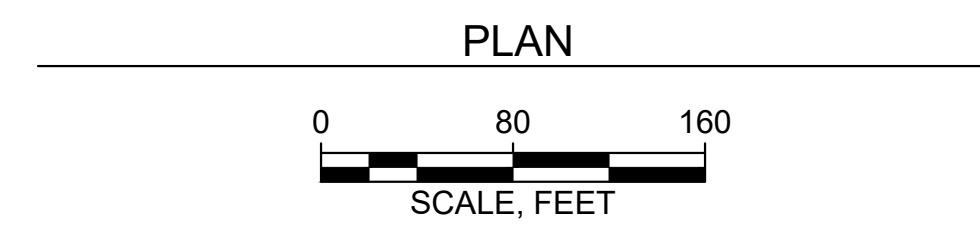


ENTRANCE SHALL BE PROPERLY GRADED TO PREVENT RUNOFF FROM LEAVING THE CONSTRUCTION SITE. THE ENTRANCE SHALL BE MAINTAINED IN A CONDITION WHICH WILL PREVENT TRACKING OR FLOWING OF SEDIMENT ONTO PUBLIC RIGHTS OF WAY. ALL SEDIMENT SPILLED, DROPPED, WASHED OR TRACKED ONTO PUBLIC RIGHTS OF WAY MUST BE REMOVED IMMEDIATELY BY CONTRACTOR. AS NECESSARY, WHEELS MUST BE CLEANED TO REMOVE SEDIMENT PRIOR TO ENTRANCE ONTO PUBLIC RIGHT OF WAY. WHEN WASHING IS REQUIRED, IT SHALL BE DONE ON AN AREA STABILIZED WITH CRUSHED STONE WHICH DRAINS INTO AN APPROVED SEDIMENT TRAP OR SEDIMENT BASIN. ALL SEDIMENT SHALL BE PREVENTED FROM ENTERING ANY STORM DRAIN, DITCH OR WATERCOURSE USING APPROVED METHODS.

COORDINATES OF STATIONING		
ID	NORTHING	EASTING
UPSTREAM FACE OF CONCRETE ROLLWAY STRUCTURE		
STA 0+00	2347512.2051	246531.55
STA 1+00	2347608.3406	246504.0188
STA 2+00	2347704.4761	246476.4876
STA 3+00	2347800.6116	246448.9563
STA 4+00	2347896.7471	246421.4251
STA 5+00	2347992.8825	246393.8938

POINT	LOCATION	NORTHING	EASTING	ELEVATION	DESCRIPTION
1	DOWNSTREAM HEADWALL	2347944.957	246387.860	737.899	ANCHOR BOLT IN CONCRETE PAD
6011	SUBSTATION	2347309.975	246536.197	736.989	AEP ALUMINUM DOME
7301	RIGHT DAM ABUTMENT	2347997.329	246454.464	743.119	AEP ALUMINUM DOME
7302	LEFT DAM ABUTMENT	2347623.024	246769.111	745.869	AEP ALUMINUM DOME

- NOTES:
- HORIZONTAL DATUM: NAD 83, INDIANA STATE PLANE, EAST ZONE, US FOOT
 - VERTICAL DATUM: NGVD 29
 - EXISTING GEOMETRY ESTIMATED FROM HDR DRAWING EKH-OP1-01. DUE TO A KNOWN DISCREPANCY BETWEEN SITE CONTROL POINTS AND PLAN SET, ALL CONTROL POINTS NEED TO BE VERIFIED WITH AEP AND CONTRACTOR'S SURVEY PROFESSIONAL BEFORE START OF WORK
 - 2018 BATHYMETRY PROVIDED BY AEP.
 - CONTROL POINTS FROM AEP DEFORMATION REVIEW DOCUMENT DATED JUNE 2019.
 - USE SILT FENCE AS REQUIRED IN THE LAY DOWN AREA. SEE DETAIL XX ON SHEET G-XX.
 - TURBIDITY CURTAIN AS REQUIRED. SEE DETAIL XX ON SHEET G-XX
 - SILT BAG AS REQUIRED. SEE DETAIL XX ON SHEET G-XX
 - ALL EQUIPMENT AND LAYDOWN LOADS SHALL BE SET BACK A MINIMUM OF 15-FT FROM THE BACK OF EXISTING BULKHEADS.



ISSUED FOR BID - NOT FOR CONSTRUCTION

Attention:				
NO.	DATE	ISSUE/REVISION	APP	
1	10/9/2025	ISSUED FOR BID	RJA	

Engineer of Record:	R. ANDERSON
Checked:	A. BAXTER
Drawn:	A. TOTO
Submitted By:	A. BAXTER
P.E. Number:	IN-19300393



GEI DWG. NO.	G-08
GEI SHEET NO.	8 OF 25

DATE	NO.	DESCRIPTION	APPD.
REVISIONS			

THIS DRAWING IS CLASSIFIED AS:
AEP CONFIDENTIAL
REFERENCE AEP'S CORPORATE INFORMATION SECURITY POLICY
THIS DRAWING IS THE PROPERTY OF THE AMERICAN ELECTRIC POWER SERVICE CORP. AND IS LOANED UPON CONDITION THAT IT IS NOT TO BE REPRODUCED OR COPIED, IN WHOLE OR IN PART, OR USED FOR FURNISHING INFORMATION TO ANY PERSON WITHOUT THE WRITTEN CONSENT OF THE AEP SERVICE CORP. OR FOR ANY PURPOSE DETRIMENTAL TO THEIR INTEREST, AND IS TO BE RETURNED UPON REQUEST.

INDIANA MICHIGAN POWER COMPANY
ELKHART HYDRO PLANT
ELKHART INDIANA
DRAWING TYPE
PROJECT CONTROL, EROSION AND SEDIMENT CONTROL PLAN

UNIT:	TBD	DRAWING NUMBER:	TBD	REV:	0
SCALE:	AS NOTED	DISCIPLINE			
DR:		DOCUMENT PREPARED BY GEI			
CH:					
SUP:					
ENG:					
DATE:		APPROVED BY			
AEP AMERICAN ELECTRIC POWER		AEP SERVICE CORP. 1 RIVERSIDE PLAZA COLUMBUS, OH 43215			