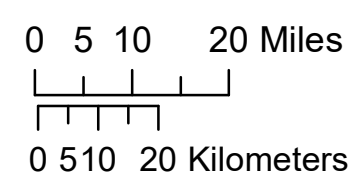
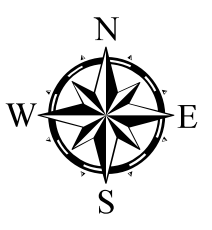
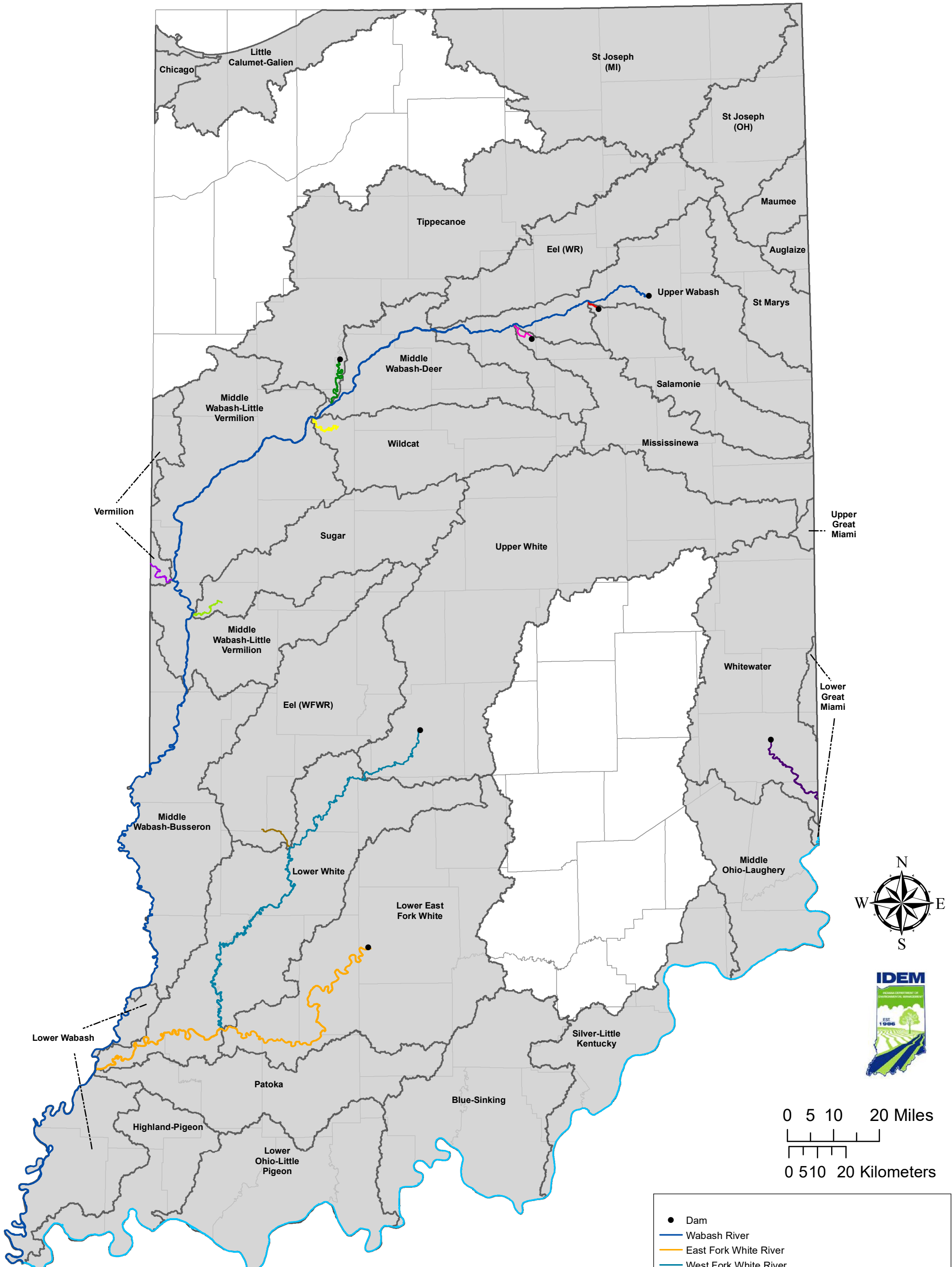


# Watersheds Identified as Acipenseriformes Waters

## Sturgeon and Paddlefish



**Sources:**  
**Data** - Obtained from the State of Indiana Geographic Information Office Library and AIMS Database; Distribution data consultation and verification by Brant Fisher (IDNR Nongame Aquatic Biologist) and Craig Jansen (IDNR Big Rivers Fisheries Biologist). Other distribution literature references include IUCN (2019), T. Simon (2011), Gerking (1945), and Phelps et al (2016)  
**Map Projection:** UTM Zone 16 N **Map Datum:** NAD83  
 Mapped by: Kayla Werbianskyj, OWQ - December 18, 2020

**This map denotes the occurrence of Acipenseriformes and a buffer at the HUC 8 tributary scale. Because Lake Sturgeon occur in Lake Michigan and Lake Erie, Great Lakes tributary watersheds are included as Acipenseriformes waters.**

- Dam
- Wabash River
- East Fork White River
- West Fork White River
- Eel River (WFWR)
- Tippecanoe River
- Sugar Creek
- Vermillion River
- Wildcat Creek
- Mississinewa River
- Salamonie River
- Ohio River
- Watershed Buffer at scale approved by U.S. EPA (HUC 8)
- Counties

This map is intended to serve as an aid in graphic representation only. This information is not warranted for accuracy or other purposes.