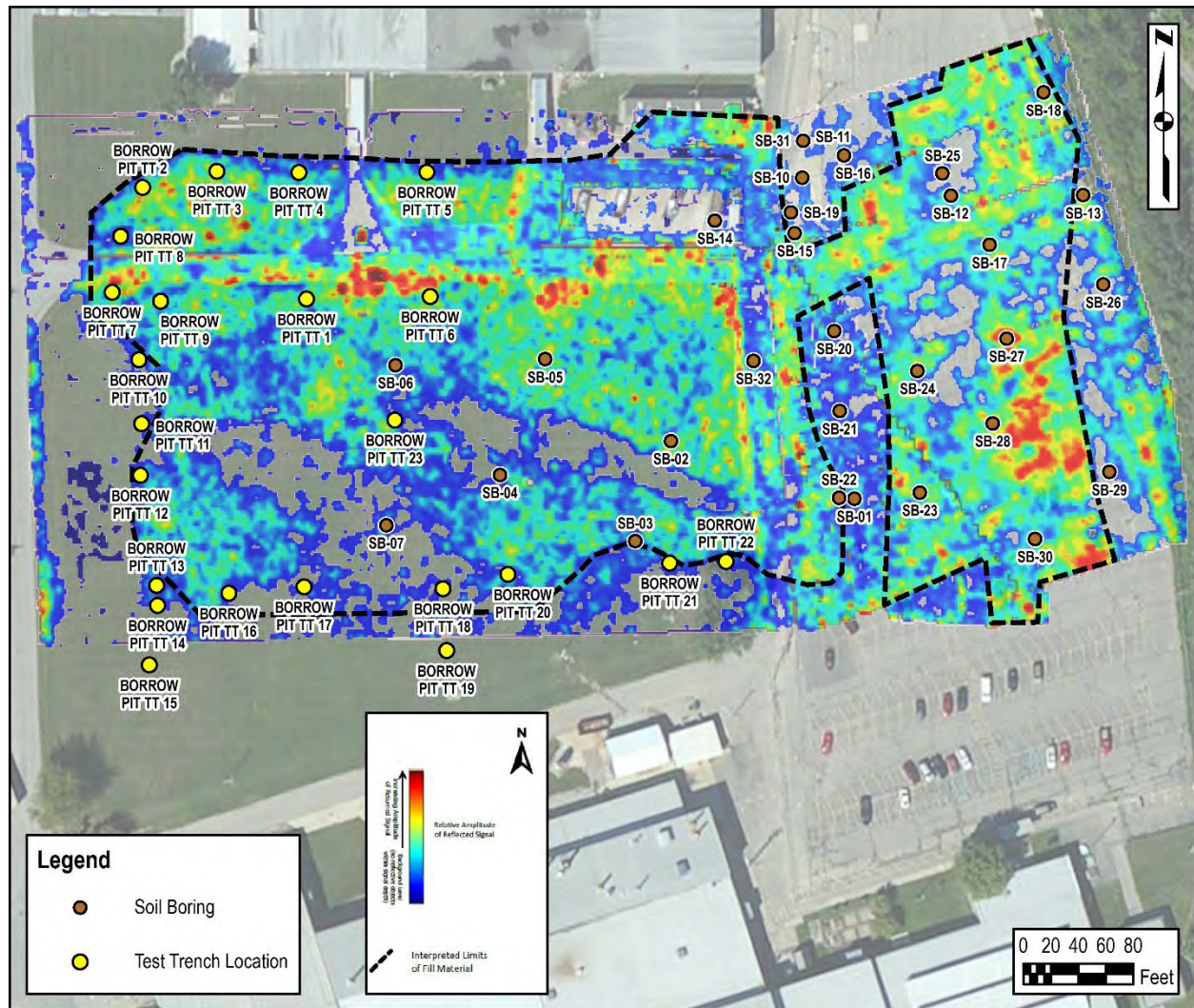


Following the 3D GPR survey, ERM conducted test trenching operations to visually identify the northern, western and southern boundaries indicated by the 3D GPR results. Test trench logs detailing the dimensions of each trench, and the resulting visual observations are located in Appendix K.

The test trenching and soil boring activities corroborate the 3D GPR findings along the historical fill area boundaries, with the fill material consisting of a silty sand fill, with anthropogenic debris including brick and brick fragments, ceramics, wood, metal debris, and slag. The material was generally dark brown to black in color with depths ranging up to 8 feet bgs.

Investigation activities conducted to date indicate that the horizontal and vertical extents of the historical fill area have been adequately characterized, and no further investigation is required.

Figure: Historical Fill Area Location Map



3.2.5 Soil Data Summary

Laboratory analytical reports for soil samples are included in Appendix L and are tabulated against applicable 2022 SLs in Table 5A through 5D.