



Microcystins ELISA Summary Report

Office of Water Quality - Watershed Assessment and Planning Branch

Sample #	Location	Date Collected	Date Analyzed	Conc. (ppb)
AB29423	Whitewater Memorial (Field Duplicate)	5/30/2017	5/31/2017	< 0.30
AB29424	Field Blank	5/30/2017	5/31/2017	< 0.30
AB29425	Whitewater Memorial SP	5/30/2017	5/31/2017	< 0.30
AB29426	Mounds SRA	5/30/2017	5/31/2017	< 0.30
AB29426LD	Mounds (Lab Duplicate)	5/30/2017	5/31/2017	< 0.30
20170530LB	Lab Blank	5/30/2017	5/31/2017	< 0.30



Assay Calibration Report

Assay Information

Assay Name: Microcystins ADDA
Assay Mode: 4-Parameter Logistic
Normal: 0.1500 - 5.0000

Units: ng/mL
of decimals: 4
Assay Description:

Controls:
Normal Control

Standards:

Std1, Concentration = 0.0000, Minimum number to use: 2
Std2, Concentration = 0.1500, Minimum number to use: 2
Std3, Concentration = 0.4000, Minimum number to use: 2
Std4, Concentration = 1.0000, Minimum number to use: 2
Std5, Concentration = 2.0000, Minimum number to use: 2
Std6, Concentration = 5.0000, Minimum number to use: 2

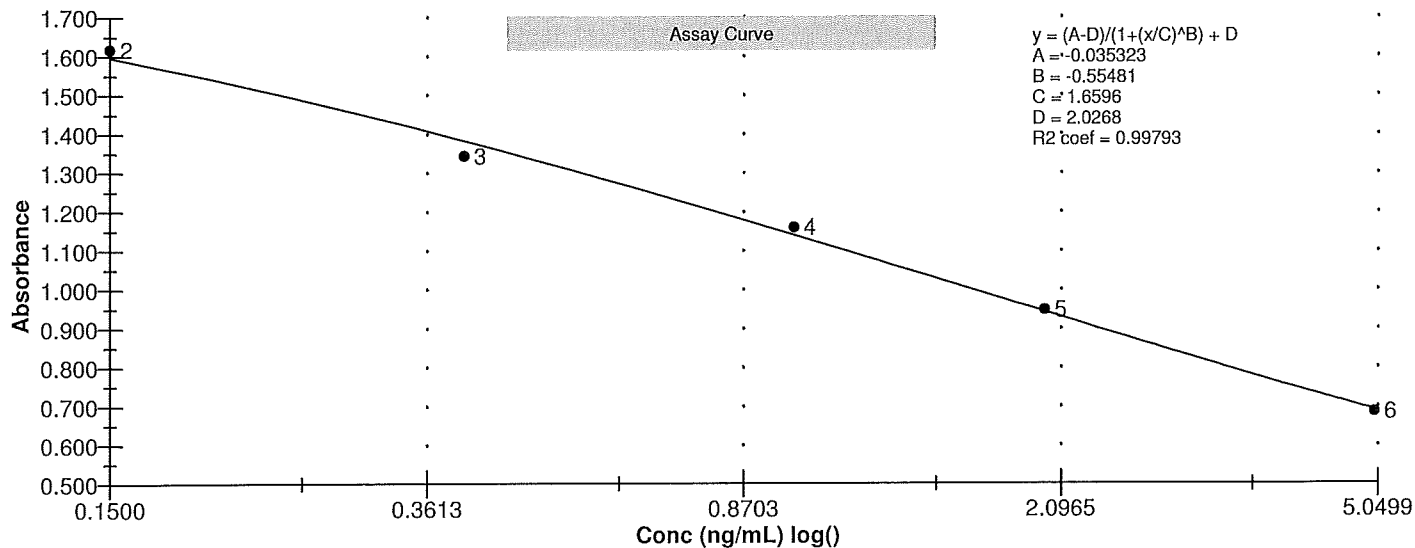
Curve valid interval: 7 days 0 hours

Axis Mode: Y = Abs, X = Log(Conc)

Assay Calibration and Statistics

Name	Absorbance	Concentration	Position
5/31/2017 1:36:20 PM			
Std1	1.954 Abs	0.0043 ng/mL	A01
Std1	2.097 Abs	< 0.0000 ng/mL	B01
Std2	1.632 Abs	0.1236 ng/mL	C01
Std2	1.603 Abs	0.1450 ng/mL	D01
Std3	1.270 Abs	0.6210 ng/mL	E01
Std3	1.418 Abs	0.3457 ng/mL	F01
Std4	1.107 Abs	1.1230 ng/mL	G01
Std4	1.211 Abs	0.7730 ng/mL	H01
Std5	0.947 Abs	1.9685 ng/mL	B02
Std6	0.693 Abs	4.9400 ng/mL	C02
Std6	0.677 Abs	> 5.0000 ng/mL	D02
5/31/2017 1:36:20 PM			
Normal Control	1.229 Abs	0.7235 ng/mL	F02
Normal Control	1.223 Abs	0.7400 ng/mL	E02

Name	Mean Abs	SD Abs	CV Abs	Mean Conc	SD Conc	CV Conc	Diff Conc
Std1	2.025	0.101	4.99				
Std2	1.618	0.021	1.27	0.134	0.015	11.27	-10.67
Std3	1.344	0.105	7.79	0.483	0.195	40.27	20.75
Std4	1.159	0.074	6.35	0.948	0.247	26.11	-5.20
Std5	0.947			1.969			-1.55
Std6	0.685	0.011	1.65				-100.00
Normal Control	1.226	0.004	0.35	0.732	0.012	1.59	





Test Report

Test Information

Name/ID	Assay	Absorbance	Concentration	Interpretation	Reference	Position
5/31/2017 1:36:20 PM						
Std1	Microcystins ADDA	1.954 Abs	0.0072 ng/mL		0.0000	A01
Std1	Microcystins ADDA	2.097 Abs	< 0.0000 ng/mL		0.0000	B01
Std2	Microcystins ADDA	1.632 Abs	0.1348 ng/mL		0.1500	C01
Std2	Microcystins ADDA	1.603 Abs	0.1552 ng/mL		0.1500	D01
Std3	Microcystins ADDA	1.270 Abs	0.5775 ng/mL		0.4000	E01
Std3	Microcystins ADDA	1.418 Abs	0.3377 ng/mL		0.4000	F01
Std4	Microcystins ADDA	1.107 Abs	1.0085 ng/mL		1.0000	G01
Std4	Microcystins ADDA	1.211 Abs	0.7080 ng/mL		1.0000	H01
Std5	Microcystins ADDA	0.796 Abs	3.0450 ng/mL		2.0000	A02
Std5	Microcystins ADDA	0.947 Abs	1.7480 ng/mL		2.0000	B02
Std6	Microcystins ADDA	0.693 Abs	4.6500 ng/mL		5.0000	C02
Std6	Microcystins ADDA	0.677 Abs	4.9900 ng/mL		5.0000	D02
Normal Control	Microcystins ADDA	1.223 Abs	0.7400 ng/mL			E02
Normal Control	Microcystins ADDA	1.229 Abs	0.7235 ng/mL			F02
AB29423	Microcystins ADDA	1.957 Abs	0.0039 ng/mL	LOW	0.1500 - 5.0000	G02
AB29423	Microcystins ADDA	2.172 Abs [2.0645] {7.4 C	< 0.0000 ng/mL [< 0.0000]	Out(LR) [Out(LR)]	0.1500 - 5.0000	H02
AB29424	Microcystins ADDA	2.164 Abs	< 0.0000 ng/mL	Out(LR)	0.1500 - 5.0000	A03
AB29424	Microcystins ADDA	2.074 Abs [2.1190] {3.0 C	< 0.0000 ng/mL [< 0.0000]	Out(LR) [Out(LR)]	0.1500 - 5.0000	B03
AB29425	Microcystins ADDA	1.991 Abs	0.0012 ng/mL	LOW	0.1500 - 5.0000	C03
AB29425	Microcystins ADDA	2.055 Abs [2.0230] {2.2 C	< 0.0000 ng/mL [0.0000]	Out(LR) [Low]	0.1500 - 5.0000	D03
AB29426	Microcystins ADDA	1.751 Abs	0.0572 ng/mL	LOW	0.1500 - 5.0000	E03
AB29426	Microcystins ADDA	1.930 Abs [1.8405] {6.9 C	0.0073 ng/mL [0.0258] {109.4 C	Low [Low]	0.1500 - 5.0000	F03
AB29426LD	Microcystins ADDA	1.635 Abs	0.1216 ng/mL	LOW	0.1500 - 5.0000	G03
AB29426LD	Microcystins ADDA	1.868 Abs [1.7515] {9.4 C	0.0189 ng/mL [0.0570] {103.4 C	Low [Low]	0.1500 - 5.0000	H03
20170530LB	Microcystins ADDA	2.106 Abs	< 0.0000 ng/mL	Out(LR)	0.1500 - 5.0000	A04
20170530LB	Microcystins ADDA	2.237 Abs [2.1715] {4.3 C	< 0.0000 ng/mL [< 0.0000]	Out(LR) [Out(LR)]	0.1500 - 5.0000	B04

The data in this report is preliminary without a quality control report. This data is not warranted for accuracy or other purposes.

Laboratory Analyst Signature

Date