



## Microcystins ELISA Summary Report

Office of Water Quality - Watershed Assessment and Planning Branch

Sample #	Location	Date Collected	Date Analyzed	Conc. (ppb)
AB22927	Raccoon Lake Field Duplicate	8/17/2015	8/19/2015	< 0.150
AB22928	Field Blank	8/17/2015	8/19/2015	< 0.150
AB22929	Raccoon Lake SRA	8/17/2015	8/19/2015	< 0.150
AB22930	Fairfax SRA	8/17/2015	8/19/2015	< 0.150
AB22931	Paynetown SRA	8/17/2015	8/19/2015	< 0.150
AB22932	Hardy Lake SRA	8/18/2015	8/19/2015	0.49
AB22933	Mounds SRA	8/18/2015	8/19/2015	0.16
AB22934	Quakertown SRA	8/18/2015	8/19/2015	< 0.150
AB22935	Whitewater Memorial SP	8/18/2015	8/19/2015	< 0.150
AB22935LD	Whitewater Lab Duplicate	8/18/2015	8/19/2015	< 0.150
20150817LB	Lab Blank	8/17/2015	8/19/2015	< 0.150



# Assay Calibration Report

## Assay Information

Assay Name: Microcystins ADDA  
Assay Mode: 4-Parameter Logistic  
Normal: 0.1500 - 5.0000

Units: ng/mL  
# of decimals: 4  
Assay Description:

Controls:  
Normal Control

Standards:

Std1, Concentration = 0.0000, Minimum number to use: 2  
Std2, Concentration = 0.1500, Minimum number to use: 2  
Std3, Concentration = 0.4000, Minimum number to use: 2  
Std4, Concentration = 1.0000, Minimum number to use: 2  
Std5, Concentration = 2.0000, Minimum number to use: 2  
Std6, Concentration = 5.0000, Minimum number to use: 2

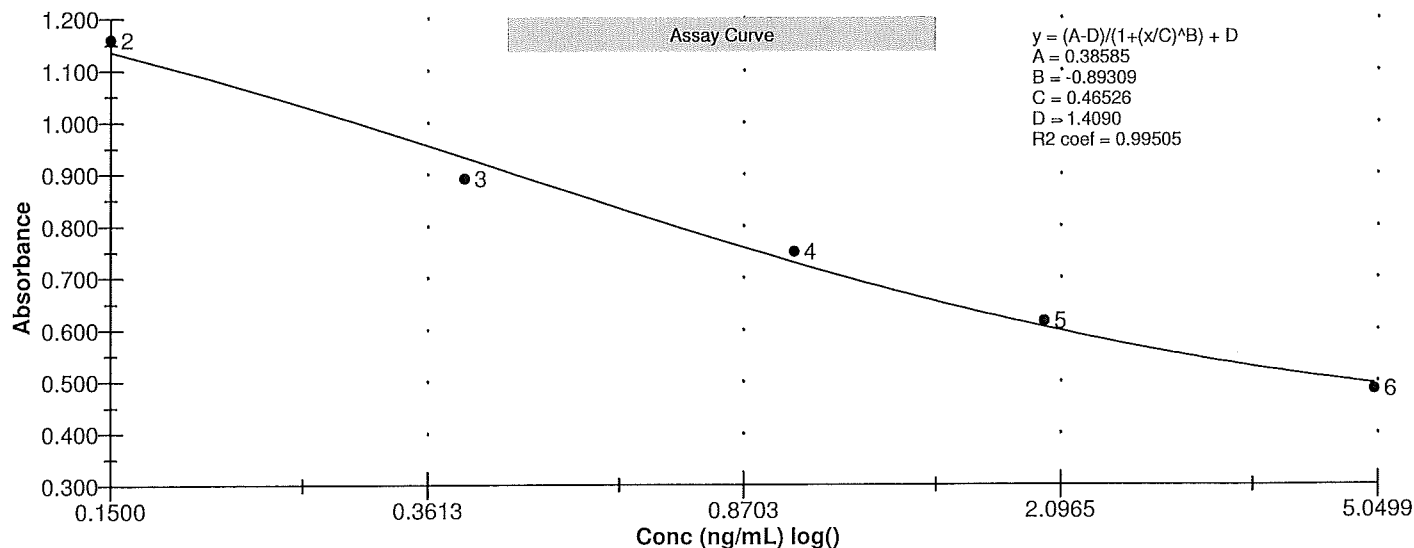
Curve valid interval: 7 days 0 hours

Axis Mode: Y = Abs, X = Log(Conc)

## Assay Calibration and Statistics

Name	Absorbance	Concentration	Position
8/19/2015 10:35:04 AM			
Std1	1.400 Abs	0.0024 ng/mL	A01
Std1	1.410 Abs	< 0.0000 ng/mL	B01
Std2	1.158 Abs	0.1321 ng/mL	C01
Std2	1.161 Abs	0.1298 ng/mL	D01
Std3	0.900 Abs	0.4600 ng/mL	E01
Std3	0.883 Abs	0.4955 ng/mL	F01
Std4	0.751 Abs	0.9000 ng/mL	G01
Std4	0.748 Abs	0.9130 ng/mL	H01
Std5	0.593 Abs	2.1600 ng/mL	A02
Std5	0.639 Abs	1.6175 ng/mL	B02
Std6	0.484 Abs	> 5.0000 ng/mL	C02
8/19/2015 10:35:04 AM			
Normal Control	0.882 Abs	0.4976 ng/mL	F02
Normal Control	0.820 Abs	0.6545 ng/mL	E02

Name	Mean Abs	SD Abs	CV Abs	Mean Conc	SD Conc	CV Conc	Diff Conc
Std1	1.405	0.007	0.50				
Std2	1.160	0.002	0.18	0.131	0.002	1.24	-12.67
Std3	0.891	0.012	1.35	0.478	0.025	5.25	19.50
Std4	0.750	0.002	0.28	0.906	0.009	1.01	-9.40
Std5	0.616	0.033	5.28	1.889	0.384	20.31	-5.55
Std6	0.484						-100.00
Normal Control	0.851	0.044	5.15	0.576	0.111	19.26	





## Test Report

### Test Information

Name/ID	Assay	Absorbance	Concentration	Interpretation	Reference	Position
8/19/2015 10:35:04 AM						
Std1	Microcystins ADDA	1.400 Abs	0.0031 ng/mL		0.0000	A01
Std1	Microcystins ADDA	1.410 Abs	< 0.0000 ng/mL		0.0000	B01
Std2	Microcystins ADDA	1.158 Abs	0.1363 ng/mL		0.1500	C01
Std2	Microcystins ADDA	1.161 Abs	0.1340 ng/mL		0.1500	D01
Std3	Microcystins ADDA	0.900 Abs	0.4481 ng/mL		0.4000	E01
Std3	Microcystins ADDA	0.883 Abs	0.4821 ng/mL		0.4000	F01
Std4	Microcystins ADDA	0.751 Abs	0.8790 ng/mL		1.0000	G01
Std4	Microcystins ADDA	0.748 Abs	0.8925 ng/mL		1.0000	H01
Std5	Microcystins ADDA	0.593 Abs	2.3250 ng/mL		2.0000	A02
Std5	Microcystins ADDA	0.639 Abs	1.6550 ng/mL		2.0000	B02
Std6	Microcystins ADDA	0.484 Abs	> 5.0000 ng/mL		5.0000	C02
Std6	Microcystins ADDA	0.542 Abs	3.8350 ng/mL		5.0000	D02
Normal Control	Microcystins ADDA	0.820 Abs	0.6545 ng/mL			E02
Normal Control	Microcystins ADDA	0.882 Abs	0.4976 ng/mL			F02
AB22927	Microcystins ADDA	1.242 Abs	0.0746 ng/mL	LOW	0.1500 - 5.0000	G02
AB22927	Microcystins ADDA	1.241 Abs	0.0752 ng/mL	LOW	0.1500 - 5.0000	H02
AB22928	Microcystins ADDA	1.369 Abs	0.0129 ng/mL	LOW	0.1500 - 5.0000	A03
AB22928	Microcystins ADDA	1.371 Abs	0.0121 ng/mL	LOW	0.1500 - 5.0000	B03
AB22929	Microcystins ADDA	1.187 Abs	0.1105 ng/mL	LOW	0.1500 - 5.0000	C03
AB22929	Microcystins ADDA	1.161 Abs	0.1298 ng/mL	LOW	0.1500 - 5.0000	D03
AB22930	Microcystins ADDA	1.461 Abs	< 0.0000 ng/mL	Out(LR)	0.1500 - 5.0000	E03
AB22930	Microcystins ADDA	1.359 Abs	0.0168 ng/mL	LOW	0.1500 - 5.0000	F03
AB22931	Microcystins ADDA	1.359 Abs	0.0168 ng/mL	LOW	0.1500 - 5.0000	G03
AB22931	Microcystins ADDA	1.435 Abs	< 0.0000 ng/mL	Out(LR)	0.1500 - 5.0000	H03
AB22932	Microcystins ADDA	0.889 Abs	0.4825 ng/mL		0.1500 - 5.0000	A04
AB22932	Microcystins ADDA	0.885 Abs	0.4911 ng/mL		0.1500 - 5.0000	B04
AB22933	Microcystins ADDA	1.142 Abs	0.1450 ng/mL	LOW	0.1500 - 5.0000	C04
AB22933	Microcystins ADDA	1.102 Abs	0.1802 ng/mL		0.1500 - 5.0000	D04
AB22934	Microcystins ADDA	1.197 Abs	0.1035 ng/mL	LOW	0.1500 - 5.0000	E04
AB22934	Microcystins ADDA	1.334 Abs	0.0271 ng/mL	LOW	0.1500 - 5.0000	F04
AB22935	Microcystins ADDA	1.348 Abs	0.0212 ng/mL	LOW	0.1500 - 5.0000	G04
AB22935	Microcystins ADDA	1.477 Abs	< 0.0000 ng/mL	Out(LR)	0.1500 - 5.0000	H04
AB22935LD	Microcystins ADDA	1.374 Abs	0.0110 ng/mL	LOW	0.1500 - 5.0000	A05
AB22935LD	Microcystins ADDA	1.409 Abs	< 0.0000 ng/mL	Out(LR)	0.1500 - 5.0000	B05
20150817LB	Microcystins ADDA	1.510 Abs	< 0.0000 ng/mL	Out(LR)	0.1500 - 5.0000	C05
20150817LB	Microcystins ADDA	1.441 Abs	< 0.0000 ng/mL	Out(LR)	0.1500 - 5.0000	D05
Check Sample A	Microcystins ADDA	1.415 Abs	< 0.0000 ng/mL	Out(LR)	0.1500 - 5.0000	E05
Check Sample A	Microcystins ADDA	1.478 Abs	< 0.0000 ng/mL	Out(LR)	0.1500 - 5.0000	F05
Check Sample B	Microcystins ADDA	0.662 Abs	1.4185 ng/mL		0.1500 - 5.0000	G05
Check Sample B	Microcystins ADDA	0.622 Abs	1.7900 ng/mL		0.1500 - 5.0000	H05
Check Sample C	Microcystins ADDA	0.393 Abs	> 5.0000 ng/mL	Out(LR)	0.1500 - 5.0000	A06
Check Sample C	Microcystins ADDA	0.412 Abs	> 5.0000 ng/mL	Out(LR)	0.1500 - 5.0000	B06

The data in this report is preliminary without a quality control report. This data is not warranted for accuracy or other purposes.

Laboratory Analyst Signature

Date