



Microcystins ELISA Summary Report

Office of Water Quality - Watershed Assessment and Planning Branch

Sample #	Location	Date Collected	Date Analyzed	Conc. (ppb)
AB21784	Potato Creek SP (Field Duplicate)	6/1/2015	6/2/2015	2.35
AB21785	Field Blank	6/1/2015	6/2/2015	< 0.150
AB21786	Potato Creek State Park	6/1/2015	6/2/2015	3.50
AB21786LD	Potato Creek SP (Lab Duplicate)	6/1/2015	6/2/2015	4.15
20150601LB	Lab Blank	6/1/2015	6/2/2015	< 0.150



Assay Calibration Report

Assay Information

Assay Name: Microcystins ADDA Units: ng/mL
 Assay Mode: 4-Parameter Logistic # of decimals: 4
 Normal: 0.1500 - 5.0000 Assay Description:

Controls:

Normal Control

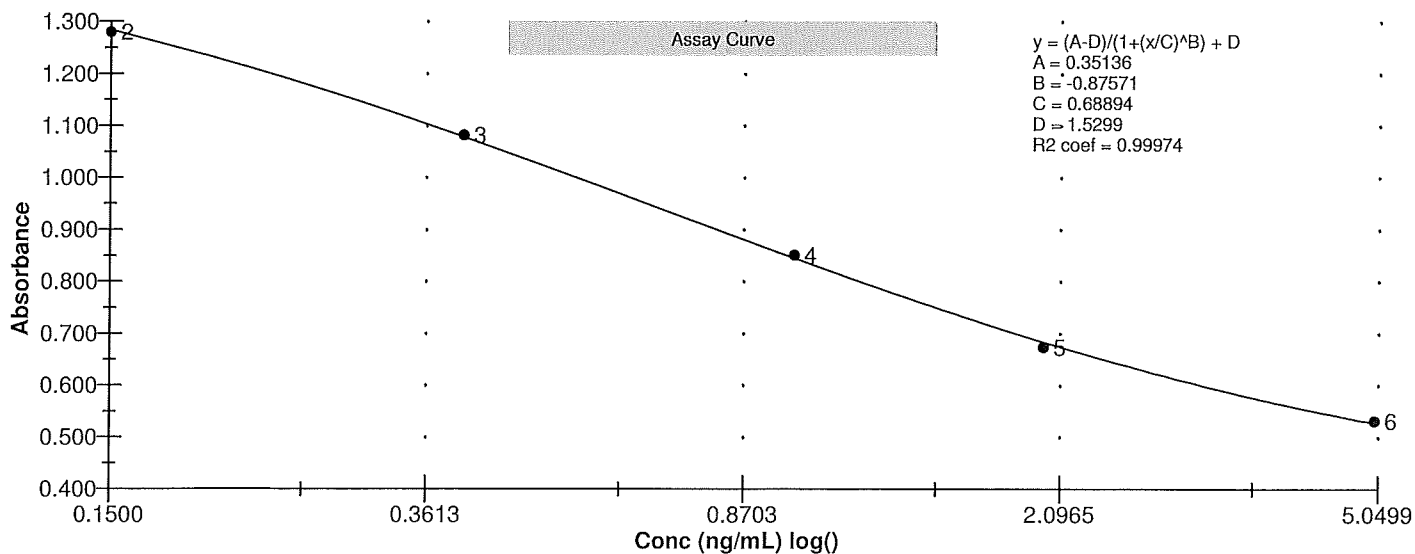
Standards:

Std1, Concentration = 0.0000, Minimum number to use: 2
 Std2, Concentration = 0.1500, Minimum number to use: 2
 Std3, Concentration = 0.4000, Minimum number to use: 2
 Std4, Concentration = 1.0000, Minimum number to use: 2
 Std5, Concentration = 2.0000, Minimum number to use: 2
 Std6, Concentration = 5.0000, Minimum number to use: 2
 Curve valid interval: 7 days 0 hours
 Axis Mode: Y = Abs, X = Log(Conc)

Assay Calibration and Statistics

Name	Absorbance	Concentration	Position
6/3/2015 12:35:58 PM			
Std1	1.477 Abs	0.0210 ng/mL	A01
Std1	1.586 Abs	< 0.0000 ng/mL	B01
Std2	1.226 Abs	0.2060 ng/mL	C01
Std2	1.333 Abs	0.1100 ng/mL	D01
Std3	1.080 Abs	0.3972 ng/mL	E01
Std3	1.084 Abs	0.3907 ng/mL	F01
Std4	0.826 Abs	1.0805 ng/mL	G01
Std4	0.877 Abs	0.8825 ng/mL	H01
Std5	0.674 Abs	2.1000 ng/mL	A02
Std6	0.534 Abs	4.7800 ng/mL	C02
Std6	0.530 Abs	4.9250 ng/mL	D02
6/3/2015 12:35:58 PM			
Normal Control	0.964 Abs	0.6295 ng/mL	F02
Normal Control	0.869 Abs	0.9110 ng/mL	E02

Name	Mean Abs	SD Abs	CV Abs	Mean Conc	SD Conc	CV Conc	Diff Conc
Std1	1.531	0.077	5.03				
Std2	1.280	0.076	5.91	0.158	0.068	42.96	5.33
Std3	1.082	0.003	0.26	0.394	0.005	1.17	-1.50
Std4	0.851	0.036	4.24	0.982	0.140	14.26	-1.80
Std5	0.674			2.100			5.00
Std6	0.532	0.003	0.53	4.852	0.103	2.11	-2.96
Normal Control	0.916	0.067	7.33	0.770	0.199	25.84	





Test Report

Test Information

Name/ID	Assay	Absorbance	Concentration	Interpretation	Reference	Position
6/3/2015 12:35:58 PM						
Std1	Microcystins ADDA	1.477 Abs	0.0157 ng/mL		0.0000	A01
Std1	Microcystins ADDA	1.586 Abs	< 0.0000 ng/mL		0.0000	B01
Std2	Microcystins ADDA	1.226 Abs	0.1977 ng/mL		0.1500	C01
Std2	Microcystins ADDA	1.333 Abs	0.0982 ng/mL		0.1500	D01
Std3	Microcystins ADDA	1.080 Abs	0.4095 ng/mL		0.4000	E01
Std3	Microcystins ADDA	1.084 Abs	0.4020 ng/mL		0.4000	F01
Std4	Microcystins ADDA	0.826 Abs	1.2090 ng/mL		1.0000	G01
Std4	Microcystins ADDA	0.877 Abs	0.9750 ng/mL		1.0000	H01
Std5	Microcystins ADDA	0.674 Abs	2.3975 ng/mL		2.0000	A02
Std6	Microcystins ADDA	0.534 Abs	> 5.0000 ng/mL		5.0000	C02
Std6	Microcystins ADDA	0.530 Abs	> 5.0000 ng/mL		5.0000	D02
Normal Control	Microcystins ADDA	0.869 Abs	0.9110 ng/mL			E02
Normal Control	Microcystins ADDA	0.964 Abs	0.6295 ng/mL			F02
AB21784	Microcystins ADDA	0.672 Abs	2.1200 ng/mL		0.1500 - 5.0000	G02
AB21784	Microcystins ADDA	0.633 Abs	2.5850 ng/mL		0.1500 - 5.0000	H02
AB21785	Microcystins ADDA	1.559 Abs	< 0.0000 ng/mL	Out(LR)	0.1500 - 5.0000	A03
AB21785	Microcystins ADDA	1.573 Abs	< 0.0000 ng/mL	Out(LR)	0.1500 - 5.0000	B03
AB21786	Microcystins ADDA	0.590 Abs	3.2950 ng/mL		0.1500 - 5.0000	C03
AB21786	Microcystins ADDA	0.571 Abs	3.7095 ng/mL		0.1500 - 5.0000	D03
AB21786LD	Microcystins ADDA	0.529 Abs	4.9600 ng/mL		0.1500 - 5.0000	E03
AB21786LD	Microcystins ADDA	0.588 Abs	3.3350 ng/mL		0.1500 - 5.0000	F03
20150601LB	Microcystins ADDA	1.568 Abs	< 0.0000 ng/mL	Out(LR)	0.1500 - 5.0000	G03
20150601LB	Microcystins ADDA	1.484 Abs	0.0177 ng/mL	LOW	0.1500 - 5.0000	H03
AB21798	Microcystins ADDA	1.468 Abs	0.0253 ng/mL	LOW	0.1500 - 5.0000	A04
AB21798	Microcystins ADDA	1.468 Abs	0.0253 ng/mL	LOW	0.1500 - 5.0000	B04
AB21799	Microcystins ADDA	1.579 Abs	< 0.0000 ng/mL	Out(LR)	0.1500 - 5.0000	C04
AB21799	Microcystins ADDA	1.502 Abs	0.0099 ng/mL	LOW	0.1500 - 5.0000	D04
AB21800	Microcystins ADDA	1.458 Abs	0.0303 ng/mL	LOW	0.1500 - 5.0000	E04
AB21800	Microcystins ADDA	1.456 Abs	0.0314 ng/mL	LOW	0.1500 - 5.0000	F04
AB21801	Microcystins ADDA	1.484 Abs	0.0177 ng/mL	LOW	0.1500 - 5.0000	G04
AB21801	Microcystins ADDA	1.482 Abs	0.0186 ng/mL	LOW	0.1500 - 5.0000	H04
AB21802	Microcystins ADDA	1.411 Abs	0.0567 ng/mL	LOW	0.1500 - 5.0000	A05
AB21802	Microcystins ADDA	1.543 Abs	< 0.0000 ng/mL	Out(LR)	0.1500 - 5.0000	B05
AB21803	Microcystins ADDA	1.437 Abs	0.0415 ng/mL	LOW	0.1500 - 5.0000	C05
AB21803	Microcystins ADDA	1.548 Abs	< 0.0000 ng/mL	Out(LR)	0.1500 - 5.0000	D05
AB21804	Microcystins ADDA	0.660 Abs	2.2500 ng/mL		0.1500 - 5.0000	E05
AB21804	Microcystins ADDA	0.658 Abs	2.2730 ng/mL		0.1500 - 5.0000	F05
AB21805	Microcystins ADDA	1.454 Abs	0.0325 ng/mL	LOW	0.1500 - 5.0000	G05
AB21805	Microcystins ADDA	1.527 Abs	0.0008 ng/mL	LOW	0.1500 - 5.0000	H05
AB21806	Microcystins ADDA	1.402 Abs	0.0622 ng/mL	LOW	0.1500 - 5.0000	A06
AB21806	Microcystins ADDA	1.500 Abs	0.0107 ng/mL	LOW	0.1500 - 5.0000	B06
AB21807	Microcystins ADDA	1.496 Abs	0.0124 ng/mL	LOW	0.1500 - 5.0000	C06
AB21807	Microcystins ADDA	1.577 Abs	< 0.0000 ng/mL	Out(LR)	0.1500 - 5.0000	D06
AB21808	Microcystins ADDA	1.466 Abs	0.0263 ng/mL	LOW	0.1500 - 5.0000	E06
AB21808	Microcystins ADDA	1.505 Abs	0.0086 ng/mL	LOW	0.1500 - 5.0000	F06
CheckA	Microcystins ADDA	1.441 Abs	0.0393 ng/mL	LOW	0.1500 - 5.0000	G06
CheckA	Microcystins ADDA	1.441 Abs	0.0393 ng/mL	LOW	0.1500 - 5.0000	H06
CheckB	Microcystins ADDA	0.724 Abs	1.6630 ng/mL		0.1500 - 5.0000	A07

The data in this report is preliminary without a quality control report. This data is not warranted for accuracy or other purposes.

Beth Rathbun

Laboratory Analyst Signature

6/3/15

Date