



Microcystins ELISA Summary Report

Office of Water Quality - Watershed Assessment and Planning Branch

Sample #	Location	Date Collected	Date Analyzed	Conc. (ppb)
AB18402	Hardy Lake SRA (Field Duplicate)	7/21/2014	7/22/2014	< 0.150
AB18403	Field Blank	7/21/2014	7/22/2014	< 0.150
AB18404	Hardy Lake SRA	7/21/2014	7/22/2014	< 0.150
AB18405	Quakertown SRA	7/21/2014	7/22/2014	< 0.150
AB18406	Mounds SRA	7/21/2014	7/22/2014	0.813
AB18405LD	Quakertown SP (Lab Duplicate)	7/21/2014	7/22/2014	0.179
20140721	Lab Blank	7/21/2014	7/22/2014	< 0.150



Assay Calibration Report

Assay Information

Assay Name: Microcystins ADDA Units: ng/mL
Assay Mode: 4-Parameter Logistic # of decimals: 4
Normal: 0.1500 - 5.0000 Assay Description:

Controls:
Normal Control

Standards:

Std1, Concentration = 0.0000, Minimum number to use: 2
Std2, Concentration = 0.1500, Minimum number to use: 2
Std3, Concentration = 0.4000, Minimum number to use: 2
Std4, Concentration = 1.0000, Minimum number to use: 2
Std5, Concentration = 2.0000, Minimum number to use: 2
Std6, Concentration = 5.0000, Minimum number to use: 2

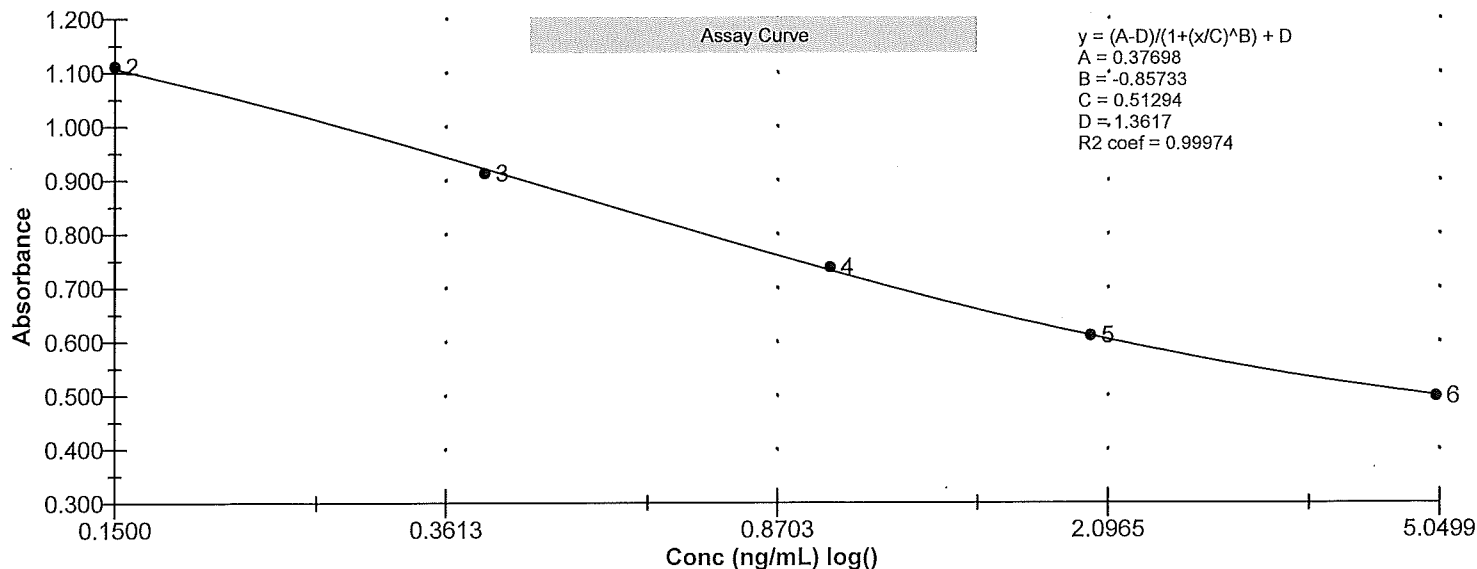
Curve valid interval: 7 days 0 hours

Axis Mode: Y = Abs, X = Log(Conc)

Assay Calibration and Statistics

Name	Absorbance	Concentration	Position
7/22/2014 12:49:11 PM			
Std1	1.348 Abs	0.0036 ng/mL	A01
Std1	1.373 Abs	< 0.0000 ng/mL	B01
Std2	1.114 Abs	0.1437 ng/mL	C01
Std2	1.109 Abs	0.1483 ng/mL	D01
Std3	0.874 Abs	0.5020 ng/mL	E01
Std3	0.952 Abs	0.3455 ng/mL	F01
Std4	0.705 Abs	1.1530 ng/mL	G01
Std4	0.772 Abs	0.8185 ng/mL	H01
Std5	0.595 Abs	2.2250 ng/mL	A02
Std5	0.627 Abs	1.8045 ng/mL	B02
Std6	0.486 Abs	> 5.0000 ng/mL	C02
Std6	0.511 Abs	4.4250 ng/mL	D02
7/22/2014 12:49:11 PM			
Normal Control	0.801 Abs	0.7105 ng/mL	F02
Normal Control	0.791 Abs	0.7460 ng/mL	E02

Name	Mean Abs	SD Abs	CV Abs	Mean Conc	SD Conc	CV Conc	Diff Conc
Std1	1.361	0.018	1.30				
Std2	1.112	0.004	0.32	0.146	0.003	2.23	-2.67
Std3	0.913	0.055	6.04	0.424	0.111	26.11	6.00
Std4	0.738	0.047	6.42	0.986	0.237	23.99	-1.40
Std5	0.611	0.023	3.70	2.015	0.297	14.76	0.75
Std6	0.498	0.018	3.55				-100.00
Normal Control	0.796	0.007	0.89	0.728	0.025	3.45	





Name/ID	Assay	Absorbance	Concentration	Interpretation	Reference	Position
7/22/2014 12:49:11 PM						
Std1	Microcystins ADDA	1.348 Abs	0.0036 ng/mL		0.0000	A01
Std1	Microcystins ADDA	1.373 Abs	< 0.0000 ng/mL		0.0000	B01
Std2	Microcystins ADDA	1.114 Abs	0.1437 ng/mL		0.1500	C01
Std2	Microcystins ADDA	1.109 Abs	0.1483 ng/mL		0.1500	D01
Std3	Microcystins ADDA	0.874 Abs	0.5020 ng/mL		0.4000	E01
Std3	Microcystins ADDA	0.952 Abs	0.3455 ng/mL		0.4000	F01
Std4	Microcystins ADDA	0.705 Abs	1.1530 ng/mL		1.0000	G01
Std4	Microcystins ADDA	0.772 Abs	0.8185 ng/mL		1.0000	H01
Std5	Microcystins ADDA	0.595 Abs	2.2250 ng/mL		2.0000	A02
Std5	Microcystins ADDA	0.627 Abs	1.8045 ng/mL		2.0000	B02
Std6	Microcystins ADDA	0.486 Abs	> 5.0000 ng/mL		5.0000	C02
Std6	Microcystins ADDA	0.511 Abs	4.4250 ng/mL		5.0000	D02
Normal Control	Microcystins ADDA	0.791 Abs	0.7460 ng/mL			E02
Normal Control	Microcystins ADDA	0.801 Abs	0.7105 ng/mL			F02
AB18402	Microcystins ADDA	1.168 Abs	0.0993 ng/mL	LOW	0.1500 - 5.0000	G02
AB18402	Microcystins ADDA	1.237 Abs	0.0540 ng/mL	LOW	0.1500 - 5.0000	H02
AB18403	Microcystins ADDA	1.374 Abs	< 0.0000 ng/mL	Out(LR)	0.1500 - 5.0000	A03
AB18403	Microcystins ADDA	1.379 Abs	< 0.0000 ng/mL	Out(LR)	0.1500 - 5.0000	B03
AB18404	Microcystins ADDA	1.167 Abs	0.1001 ng/mL	LOW	0.1500 - 5.0000	C03
AB18404	Microcystins ADDA	1.198 Abs	0.0782 ng/mL	LOW	0.1500 - 5.0000	D03
AB18405	Microcystins ADDA	1.105 Abs	0.1520 ng/mL		0.1500 - 5.0000	E03
AB18405	Microcystins ADDA	1.127 Abs	0.1322 ng/mL	LOW	0.1500 - 5.0000	F03
AB18406	Microcystins ADDA	0.778 Abs	0.7950 ng/mL		0.1500 - 5.0000	G03
AB18406	Microcystins ADDA	0.769 Abs	0.8310 ng/mL		0.1500 - 5.0000	H03
AB18405LD	Microcystins ADDA	1.043 Abs	0.2171 ng/mL		0.1500 - 5.0000	A04
AB18405LD	Microcystins ADDA	1.117 Abs	0.1410 ng/mL	LOW	0.1500 - 5.0000	B04
20140721LB	Microcystins ADDA	1.326 Abs	0.0111 ng/mL	LOW	0.1500 - 5.0000	C04
20140721LB	Microcystins ADDA	1.385 Abs	< 0.0000 ng/mL	Out(LR)	0.1500 - 5.0000	D04
Check Sample A	Microcystins ADDA	1.347 Abs	0.0039 ng/mL	LOW	0.1500 - 5.0000	E04
Check Sample A	Microcystins ADDA	1.389 Abs	< 0.0000 ng/mL	Out(LR)	0.1500 - 5.0000	F04
Check Sample B	Microcystins ADDA	0.597 Abs	2.1950 ng/mL		0.1500 - 5.0000	G04
Check Sample B	Microcystins ADDA	0.629 Abs	1.7820 ng/mL		0.1500 - 5.0000	H04

Betty Carter

7/22/14
Date