



Cylindrospermopsin ELISA Summary Report

Office of Water Quality - Watershed Assessment and Planning Branch

Sample #	Location	Date Collected	Date Analyzed	Conc. (ppb)
AB22633	Mississinewa Lake Miami SRA	8/10/2015	8/12/2015	< 0.050
AB22634	Potato Creek SP	8/10/2015	8/12/2015	< 0.050
AB22635	Pokagon SP	8/11/2015	8/12/2015	< 0.050
AB22636	Chain O' Lakes SP	8/11/2015	8/12/2015	< 0.050
AB22637	Lost Bridge West SRA	8/11/2015	8/12/2015	< 0.050
AB22638*	Lincoln SP	8/9/2015	8/12/2015	2.48
AB22639	Ferdinand SF	8/10/2015	8/12/2015	< 0.050
AB22640	Lost Bridge West (Field Duplicate)	8/11/2015	8/12/2015	< 0.050
AB22641	Field Blank	8/11/2015	8/12/2015	< 0.050
AB22637LD	Lost Bridge West (Lab Duplicate)	8/11/2015	8/12/2015	< 0.050
20150812LB	Lab Blank	8/11/2015	8/12/2015	< 0.050

*Sample AB22638 result was above the calibration limit. The sample was diluted 3X and rerun using 9 cells. The mean result was 2.48 ppb with a Standard Deviation of 0.17.



Assay Calibration Report

Assay Information

Assay Name: Cylindrospermopsin 1X Units: ng/mL
 Assay Mode: 4-Parameter Logistic # of decimals: 3
 Normal: 0.050 - 2.000 Assay Description:

Controls:

Normal Control

Standards:

Std1, Concentration = 0.000, Minimum number to use: 3
 Std2, Concentration = 0.050, Minimum number to use: 3
 Std3, Concentration = 0.100, Minimum number to use: 3
 Std4, Concentration = 0.250, Minimum number to use: 3
 Std5, Concentration = 0.500, Minimum number to use: 3
 Std6, Concentration = 1.000, Minimum number to use: 3
 Std7, Concentration = 2.000, Minimum number to use: 3

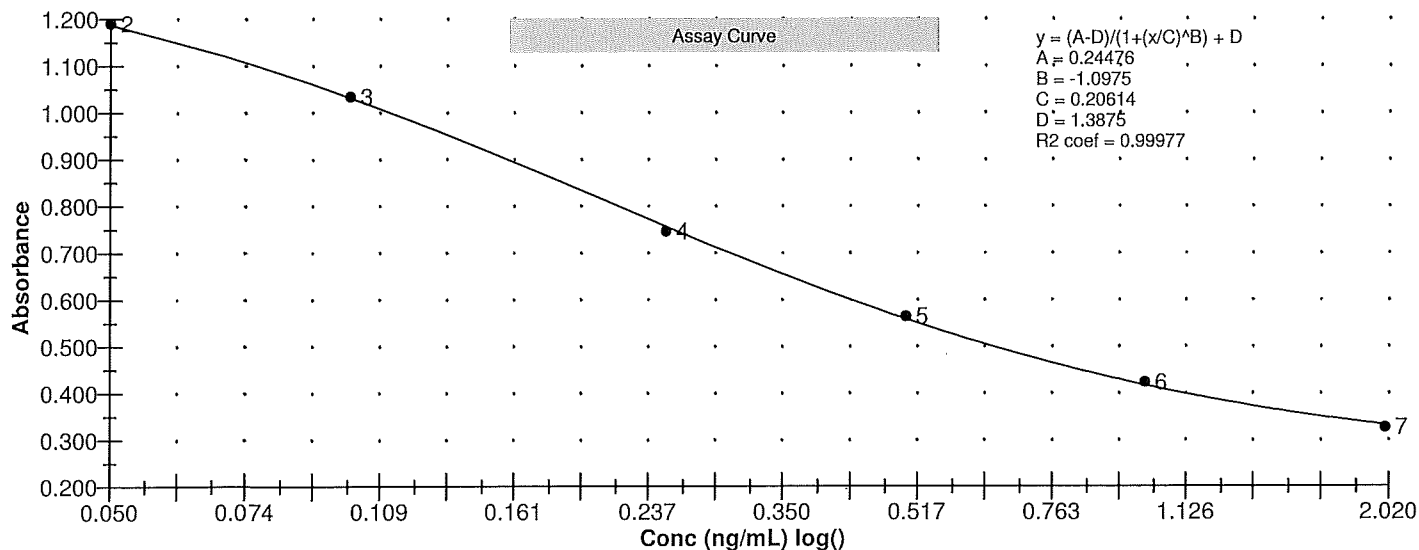
Curve valid interval: 7 days 0 hours

Axis Mode: Y = Abs, X = Log(Conc)

Assay Calibration and Statistics

Name	Absorbance	Concentration	Position
8/12/2015 3:17:18 PM			
Std1	1.346 Abs	0.000 ng/mL	A01
Std1	1.397 Abs	< 0.000 ng/mL	B01
Std1	1.416 Abs	< 0.000 ng/mL	C01
Std2	1.224 Abs	0.040 ng/mL	D01
Std2	1.170 Abs	0.055 ng/mL	E01
Std2	1.180 Abs	0.052 ng/mL	F01
Std3	1.012 Abs	0.107 ng/mL	G01
Std3	1.031 Abs	0.100 ng/mL	H01
Std3	1.059 Abs	0.090 ng/mL	A02
Std4	0.731 Abs	0.271 ng/mL	B02
Std4	0.747 Abs	0.257 ng/mL	C02
Std4	0.760 Abs	0.247 ng/mL	D02
Std5	0.547 Abs	0.524 ng/mL	E02
Std5	0.572 Abs	0.474 ng/mL	F02
Std5	0.574 Abs	0.470 ng/mL	G02
Std6	0.444 Abs	0.850 ng/mL	H02
Std6	0.409 Abs	1.048 ng/mL	A03
Std6	0.417 Abs	0.996 ng/mL	B03
Std7	0.330 Abs	> 2.000 ng/mL	C03
Std7	0.323 Abs	> 2.000 ng/mL	E03
8/12/2015 3:17:18 PM			
Normal Control	0.475 Abs	0.723 ng/mL	H03
Normal Control	0.451 Abs	0.818 ng/mL	G03
Normal Control	0.472 Abs	0.734 ng/mL	F03

Name	Mean Abs	SD Abs	CV Abs	Mean Conc	SD Conc	CV Conc	Diff Conc
Std1	1.386	0.036	2.61				
Std2	1.191	0.029	2.41	0.049	0.008	16.20	-2.00
Std3	1.034	0.024	2.29	0.099	0.009	8.63	-1.00





Assay Calibration Report

Assay Information

Assay Name: Cylindrospermopsin 1X
Assay Mode: 4-Parameter Logistic
Normal: 0.050 - 2.000

Units: ng/mL
of decimals: 3
Assay Description:

Controls:

Normal Control

Standards:

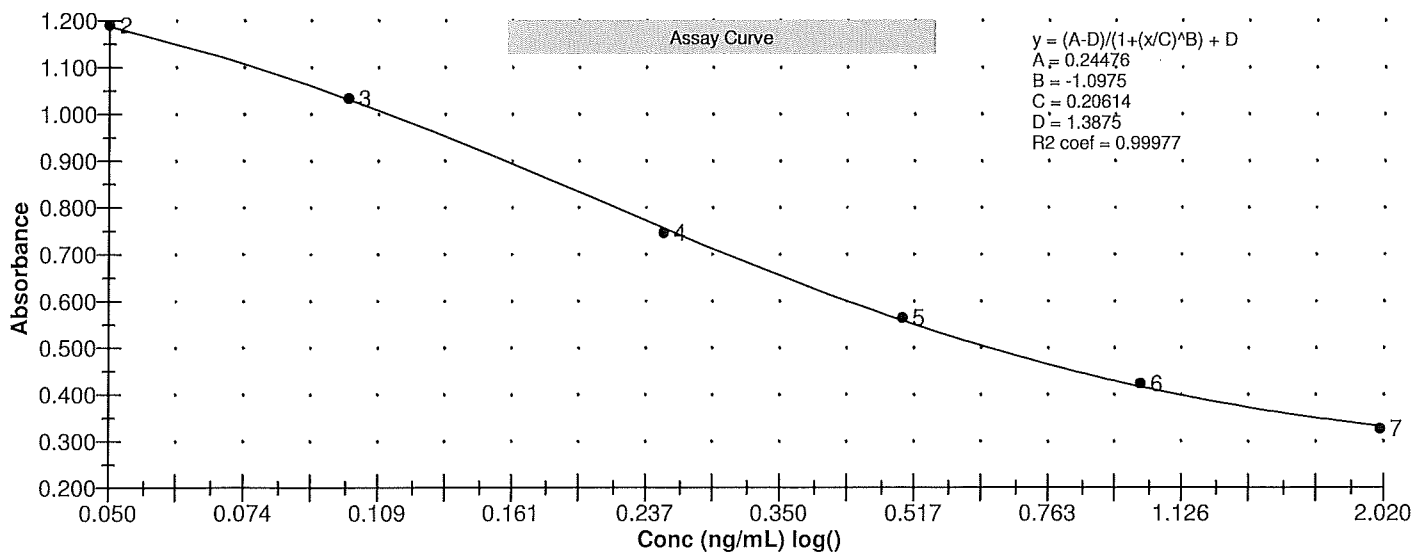
Std1, Concentration = 0.000, Minimum number to use: 3
Std2, Concentration = 0.050, Minimum number to use: 3
Std3, Concentration = 0.100, Minimum number to use: 3
Std4, Concentration = 0.250, Minimum number to use: 3
Std5, Concentration = 0.500, Minimum number to use: 3
Std6, Concentration = 1.000, Minimum number to use: 3
Std7, Concentration = 2.000, Minimum number to use: 3

Curve valid interval: 7 days 0 hours

Axis Mode: Y = Abs, X = Log(Conc)

Assay Calibration and Statistics

Name	Mean Abs	SD Abs	CV Abs	Mean Conc	SD Conc	CV Conc	Diff Conc
Std4	0.746	0.015	1.95	0.258	0.012	4.67	3.20
Std5	0.564	0.015	2.67	0.489	0.030	6.15	-2.20
Std6	0.423	0.018	4.33	0.965	0.103	10.64	-3.50
Std7	0.326	0.005	1.52				-100.00
Normal Control	0.466	0.013	2.81	0.758	0.052	6.85	





Assay Calibration Report

Assay Information

Assay Name: Cylindrospermopsin 3X Units: ng/mL
Assay Mode: 4-Parameter Logistic # of decimals: 3
Normal: 0.150 - 6.000 Assay Description:

Controls:
Normal Control

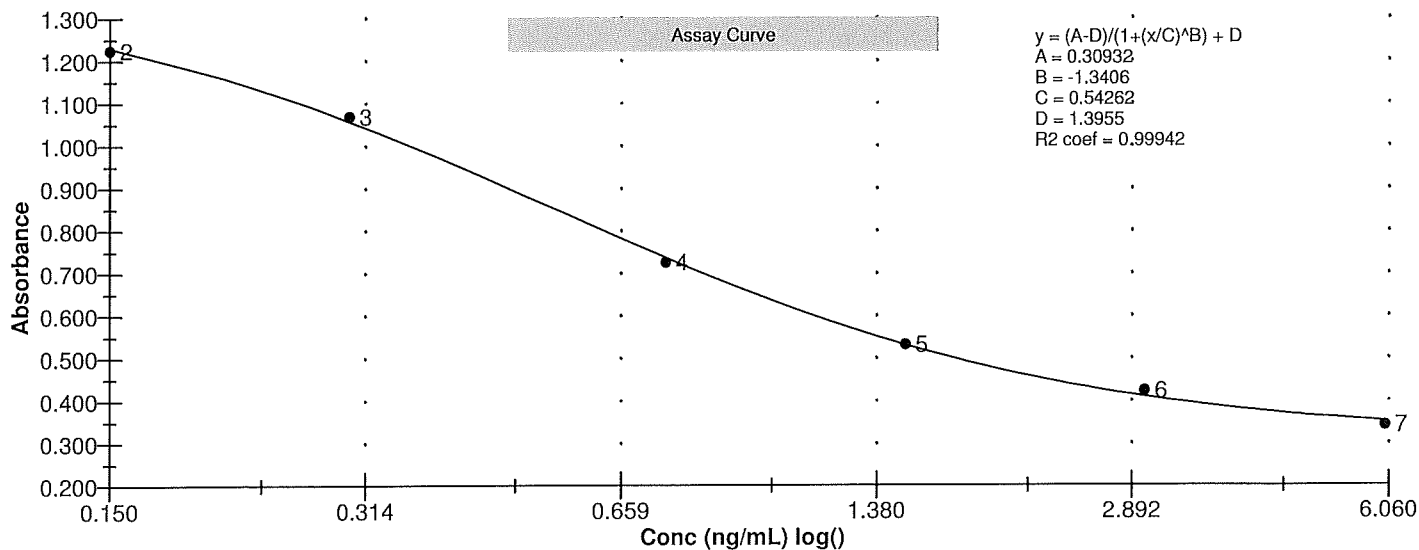
Standards:

Std1, Concentration = 0.000, Minimum number to use: 2
Std2, Concentration = 0.150, Minimum number to use: 2
Std3, Concentration = 0.300, Minimum number to use: 2
Std4, Concentration = 0.750, Minimum number to use: 2
Std5, Concentration = 1.500, Minimum number to use: 2
Std6, Concentration = 3.000, Minimum number to use: 2
Std7, Concentration = 6.000, Minimum number to use: 2
Curve valid interval: 7 days 0 hours
Axis Mode: Y = Abs, X = Log(Conc)

Assay Calibration and Statistics

Name	Absorbance	Concentration	Position
8/13/2015 10:31:38 AM			
Std1	1.394 Abs	0.004 ng/mL	A01
Std1	1.408 Abs	< 0.000 ng/mL	B01
Std1	1.387 Abs	0.015 ng/mL	C01
Std2	1.230 Abs	0.151 ng/mL	D01
Std2	1.197 Abs	0.178 ng/mL	E01
Std2	1.247 Abs	0.137 ng/mL	F01
Std3	1.052 Abs	0.305 ng/mL	G01
Std3	1.090 Abs	0.269 ng/mL	H01
Std3	1.066 Abs	0.292 ng/mL	A02
Std4	0.721 Abs	0.784 ng/mL	B02
Std4	0.723 Abs	0.779 ng/mL	C02
Std4	0.732 Abs	0.760 ng/mL	D02
Std5	0.508 Abs	1.658 ng/mL	E02
Std5	0.550 Abs	1.385 ng/mL	F02
Std5	0.539 Abs	1.448 ng/mL	G02
Std6	0.435 Abs	2.472 ng/mL	H02
Std6	0.419 Abs	2.772 ng/mL	A03
Std6	0.415 Abs	2.860 ng/mL	B03
Std7	0.342 Abs	> 6.000 ng/mL	C03
Std7	0.344 Abs	> 6.000 ng/mL	D03
Std7	0.337 Abs	> 6.000 ng/mL	E03
8/13/2015 10:31:38 AM			
Normal Control	0.470 Abs	2.004 ng/mL	H03
Normal Control	0.466 Abs	2.048 ng/mL	G03
Normal Control	0.460 Abs	2.118 ng/mL	F03

Name	Mean Abs	SD Abs	CV Abs	Mean Conc	SD Conc	CV Conc	Diff Conc
Std1	1.396	0.011	0.77				
Std2	1.225	0.025	2.08	0.155	0.021	13.42	3.33





Assay Calibration Report

Assay Information

Assay Name: Cylindrospermopsin 3X
Assay Mode: 4-Parameter Logistic
Normal: 0.150 - 6.000

Units: ng/mL
of decimals: 3
Assay Description:

Controls:

Normal Control

Standards:

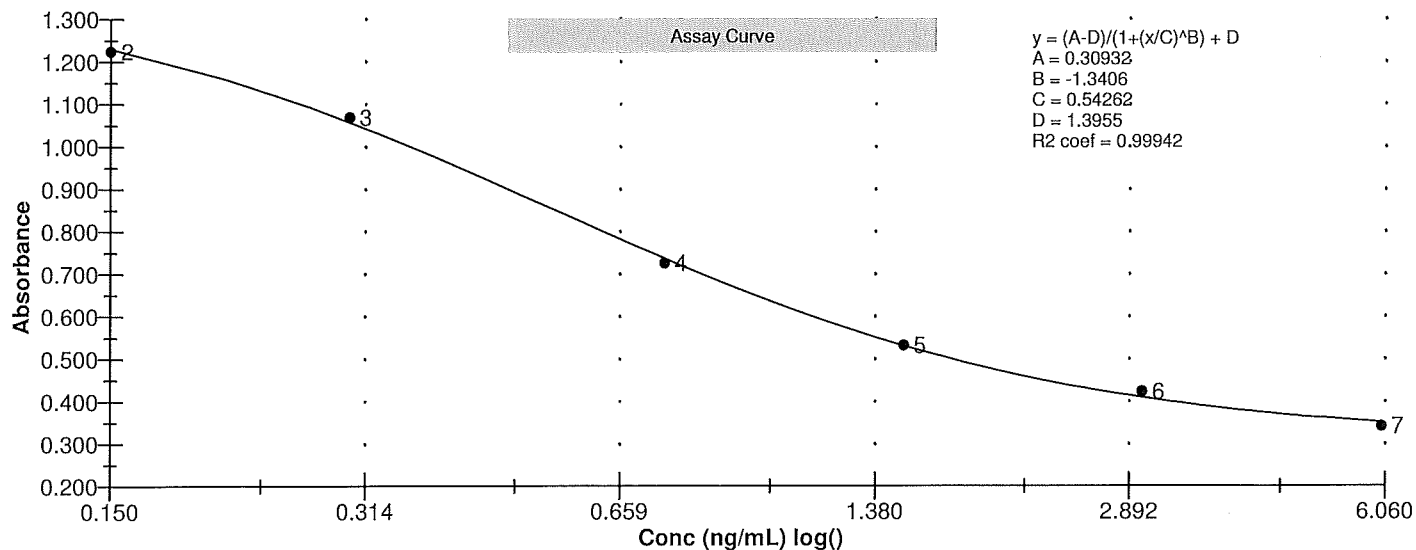
Std1, Concentration = 0.000, Minimum number to use: 2
Std2, Concentration = 0.150, Minimum number to use: 2
Std3, Concentration = 0.300, Minimum number to use: 2
Std4, Concentration = 0.750, Minimum number to use: 2
Std5, Concentration = 1.500, Minimum number to use: 2
Std6, Concentration = 3.000, Minimum number to use: 2
Std7, Concentration = 6.000, Minimum number to use: 2

Curve valid interval: 7 days 0 hours

Axis Mode: Y = Abs, X = Log(Conc)

Assay Calibration and Statistics

Name	Mean Abs	SD Abs	CV Abs	Mean Conc	SD Conc	CV Conc	Diff Conc
Std3	1.069	0.019	1.80	0.289	0.018	6.32	-3.67
Std4	0.725	0.006	0.81	0.774	0.013	1.64	3.20
Std5	0.532	0.022	4.09	1.497	0.143	9.55	-0.20
Std6	0.423	0.011	2.50	2.701	0.203	7.53	-9.97
Std7	0.341	0.004	1.06				-100.00
Normal Control	0.465	0.005	1.08	2.057	0.057	2.80	





Test Report

Test Information

Name/ID	Assay	Absorbance	Concentration	Interpretation	Reference	Position
8/12/2015 3:17:18 PM						
Std1	Cylindrospermopsin 1X	1.346 Abs	0.000 ng/mL		0.000	A01
Std1	Cylindrospermopsin 1X	1.397 Abs	< 0.000 ng/mL		0.000	B01
Std1	Cylindrospermopsin 1X	1.416 Abs	< 0.000 ng/mL		0.000	C01
Std2	Cylindrospermopsin 1X	1.224 Abs	0.041 ng/mL		0.050	D01
Std2	Cylindrospermopsin 1X	1.170 Abs	0.055 ng/mL		0.050	E01
Std2	Cylindrospermopsin 1X	1.180 Abs	0.052 ng/mL		0.050	F01
Std3	Cylindrospermopsin 1X	1.012 Abs	0.107 ng/mL		0.100	G01
Std3	Cylindrospermopsin 1X	1.031 Abs	0.100 ng/mL		0.100	H01
Std3	Cylindrospermopsin 1X	1.059 Abs	0.090 ng/mL		0.100	A02
Std4	Cylindrospermopsin 1X	0.731 Abs	0.270 ng/mL		0.250	B02
Std4	Cylindrospermopsin 1X	0.747 Abs	0.257 ng/mL		0.250	C02
Std4	Cylindrospermopsin 1X	0.760 Abs	0.246 ng/mL		0.250	D02
Std5	Cylindrospermopsin 1X	0.547 Abs	0.524 ng/mL		0.500	E02
Std5	Cylindrospermopsin 1X	0.572 Abs	0.473 ng/mL		0.500	F02
Std5	Cylindrospermopsin 1X	0.574 Abs	0.470 ng/mL		0.500	G02
Std6	Cylindrospermopsin 1X	0.444 Abs	0.856 ng/mL		1.000	H02
Std6	Cylindrospermopsin 1X	0.409 Abs	1.060 ng/mL		1.000	A03
Std6	Cylindrospermopsin 1X	0.417 Abs	1.006 ng/mL		1.000	B03
Std7	Cylindrospermopsin 1X	0.330 Abs	> 2.000 ng/mL		2.000	C03
Std7	Cylindrospermopsin 1X	0.323 Abs	> 2.000 ng/mL		2.000	E03
Normal Control	Cylindrospermopsin 1X	0.472 Abs	0.734 ng/mL			F03
Normal Control	Cylindrospermopsin 1X	0.451 Abs	0.818 ng/mL			G03
Normal Control	Cylindrospermopsin 1X	0.475 Abs	0.723 ng/mL			H03
AB22633	Cylindrospermopsin 1X	1.411 Abs	< 0.000 ng/mL	Out(LR)	0.050 - 2.000	A04
AB22633	Cylindrospermopsin 1X	1.369 Abs	0.000 ng/mL	LOW	0.050 - 2.000	B04
AB22633	Cylindrospermopsin 1X	1.398 Abs	< 0.000 ng/mL	Out(LR)	0.050 - 2.000	C04
AB22634	Cylindrospermopsin 1X	1.404 Abs	< 0.000 ng/mL	Out(LR)	0.050 - 2.000	D04
AB22634	Cylindrospermopsin 1X	1.443 Abs	< 0.000 ng/mL	Out(LR)	0.050 - 2.000	E04
AB22634	Cylindrospermopsin 1X	1.437 Abs	< 0.000 ng/mL	Out(LR)	0.050 - 2.000	F04
AB22635	Cylindrospermopsin 1X	1.478 Abs	< 0.000 ng/mL	Out(LR)	0.050 - 2.000	G04
AB22635	Cylindrospermopsin 1X	1.432 Abs	< 0.000 ng/mL	Out(LR)	0.050 - 2.000	H04
AB22635	Cylindrospermopsin 1X	1.379 Abs	0.000 ng/mL	LOW	0.050 - 2.000	A05
AB22636	Cylindrospermopsin 1X	1.403 Abs	< 0.000 ng/mL	Out(LR)	0.050 - 2.000	B05
AB22636	Cylindrospermopsin 1X	1.407 Abs	< 0.000 ng/mL	Out(LR)	0.050 - 2.000	C05
AB22636	Cylindrospermopsin 1X	1.446 Abs	< 0.000 ng/mL	Out(LR)	0.050 - 2.000	D05
AB22637	Cylindrospermopsin 1X	1.348 Abs	0.000 ng/mL	LOW	0.050 - 2.000	E05
AB22637	Cylindrospermopsin 1X	1.398 Abs	< 0.000 ng/mL	Out(LR)	0.050 - 2.000	F05
AB22637	Cylindrospermopsin 1X	1.424 Abs	< 0.000 ng/mL	Out(LR)	0.050 - 2.000	G05
AB22638	Cylindrospermopsin 1X	0.330 Abs	> 2.000 ng/mL	Out(LR)	0.050 - 2.000	H05
AB22638	Cylindrospermopsin 1X	0.318 Abs	> 2.000 ng/mL	Out(LR)	0.050 - 2.000	A06
AB22638	Cylindrospermopsin 1X	0.314 Abs	> 2.000 ng/mL	Out(LR)	0.050 - 2.000	B06
AB22639	Cylindrospermopsin 1X	1.346 Abs	0.000 ng/mL	LOW	0.050 - 2.000	C06
AB22639	Cylindrospermopsin 1X	1.364 Abs	0.000 ng/mL	LOW	0.050 - 2.000	D06
AB22639	Cylindrospermopsin 1X	1.383 Abs	0.000 ng/mL	LOW	0.050 - 2.000	E06
AB22640	Cylindrospermopsin 1X	1.438 Abs	< 0.000 ng/mL	Out(LR)	0.050 - 2.000	F06
AB22640	Cylindrospermopsin 1X	1.473 Abs	< 0.000 ng/mL	Out(LR)	0.050 - 2.000	G06
AB22640	Cylindrospermopsin 1X	1.557 Abs	< 0.000 ng/mL	Out(LR)	0.050 - 2.000	H06
AB22641	Cylindrospermopsin 1X	1.364 Abs	0.000 ng/mL	LOW	0.050 - 2.000	A07

The data in this report is preliminary without a quality control report. This data is not warranted for accuracy or other purposes.

Laboratory Analyst Signature

Date

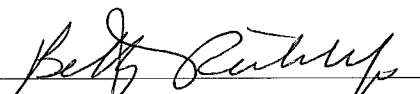



Test Report

Test Information

Name/ID	Assay	Absorbance	Concentration	Interpretation	Reference	Position
8/13/2015 10:31:38 AM						
Std1	Cylindrospermopsin 3X	1.394 Abs	0.004 ng/mL		0.000	A01
Std1	Cylindrospermopsin 3X	1.408 Abs	< 0.000 ng/mL		0.000	B01
Std1	Cylindrospermopsin 3X	1.387 Abs	0.015 ng/mL		0.000	C01
Std2	Cylindrospermopsin 3X	1.230 Abs	0.151 ng/mL		0.150	D01
Std2	Cylindrospermopsin 3X	1.197 Abs	0.178 ng/mL		0.150	E01
Std2	Cylindrospermopsin 3X	1.247 Abs	0.137 ng/mL		0.150	F01
Std3	Cylindrospermopsin 3X	1.052 Abs	0.305 ng/mL		0.300	G01
Std3	Cylindrospermopsin 3X	1.090 Abs	0.269 ng/mL		0.300	H01
Std3	Cylindrospermopsin 3X	1.066 Abs	0.292 ng/mL		0.300	A02
Std4	Cylindrospermopsin 3X	0.721 Abs	0.784 ng/mL		0.750	B02
Std4	Cylindrospermopsin 3X	0.723 Abs	0.779 ng/mL		0.750	C02
Std4	Cylindrospermopsin 3X	0.732 Abs	0.760 ng/mL		0.750	D02
Std5	Cylindrospermopsin 3X	0.508 Abs	1.658 ng/mL		1.500	E02
Std5	Cylindrospermopsin 3X	0.550 Abs	1.385 ng/mL		1.500	F02
Std5	Cylindrospermopsin 3X	0.539 Abs	1.448 ng/mL		1.500	G02
Std6	Cylindrospermopsin 3X	0.435 Abs	2.472 ng/mL		3.000	H02
Std6	Cylindrospermopsin 3X	0.419 Abs	2.772 ng/mL		3.000	A03
Std6	Cylindrospermopsin 3X	0.415 Abs	2.860 ng/mL		3.000	B03
Std7	Cylindrospermopsin 3X	0.342 Abs	> 6.000 ng/mL		6.000	C03
Std7	Cylindrospermopsin 3X	0.344 Abs	> 6.000 ng/mL		6.000	D03
Std7	Cylindrospermopsin 3X	0.337 Abs	> 6.000 ng/mL		6.000	E03
Normal Control	Cylindrospermopsin 3X	0.460 Abs	2.118 ng/mL			F03
Normal Control	Cylindrospermopsin 3X	0.466 Abs	2.048 ng/mL			G03
Normal Control	Cylindrospermopsin 3X	0.470 Abs	2.004 ng/mL			H03
AB22638	Cylindrospermopsin 3X	0.446 Abs	2.304 ng/mL		0.150 - 6.000	A04
AB22638	Cylindrospermopsin 3X	0.444 Abs	2.334 ng/mL		0.150 - 6.000	B04
AB22638	Cylindrospermopsin 3X	0.433 Abs	2.508 ng/mL		0.150 - 6.000	C04
AB22638B	Cylindrospermopsin 3X	0.426 Abs	2.634 ng/mL		0.150 - 6.000	D04
AB22638B	Cylindrospermopsin 3X	0.421 Abs	2.730 ng/mL		0.150 - 6.000	E04
AB22638B	Cylindrospermopsin 3X	0.421 Abs	2.730 ng/mL		0.150 - 6.000	F04
AB22638C	Cylindrospermopsin 3X	0.439 Abs	2.410 ng/mL		0.150 - 6.000	G04
AB22638C	Cylindrospermopsin 3X	0.446 Abs	2.304 ng/mL		0.150 - 6.000	H04
AB22638C	Cylindrospermopsin 3X	0.439 Abs	2.410 ng/mL		0.150 - 6.000	A05

The data in this report is preliminary without a quality control report. This data is not warranted for accuracy or other purposes.


Laboratory Analyst Signature


Date