



Cylindrospermopsin ELISA Summary Report

Office of Water Quality - Watershed Assessment and Planning Branch

Sample #	Location	Date Collected	Date Analyzed	Conc. (ppb)
AB22601	Quakertown SRA	7/20/2015	7/23/2015	< 0.050
AB22602	Mounds SRA	7/20/2015	7/23/2015	< 0.050
AB22603	Raccoon Lake SRA	7/20/2015	7/23/2015	< 0.050
AB22599	Mounds SRA (Field Duplicate)	7/20/2015	7/23/2015	< 0.050
AB22604	Hardy Lake SRA	7/21/2015	7/23/2015	< 0.050
AB22600	Field Blank	7/21/2015	7/23/2015	< 0.050
20150721LB	Lab Blank	7/21/2015	7/23/2015	< 0.050
AB22604LD	Hardy Lake SRA (Lab Duplicate)	7/21/2015	7/23/2015	< 0.050



Assay Calibration Report

Assay Information

Assay Name: Cylindrospermopsin 1X Units: ng/mL
Assay Mode: 4-Parameter Logistic # of decimals: 3
Normal: 0.050 - 2.000 Assay Description:

Controls:
Normal Control

Standards:

Std1, Concentration = 0.000, Minimum number to use: 3
Std2, Concentration = 0.050, Minimum number to use: 3
Std3, Concentration = 0.100, Minimum number to use: 3
Std4, Concentration = 0.250, Minimum number to use: 3
Std5, Concentration = 0.500, Minimum number to use: 3
Std6, Concentration = 1.000, Minimum number to use: 3
Std7, Concentration = 2.000, Minimum number to use: 3

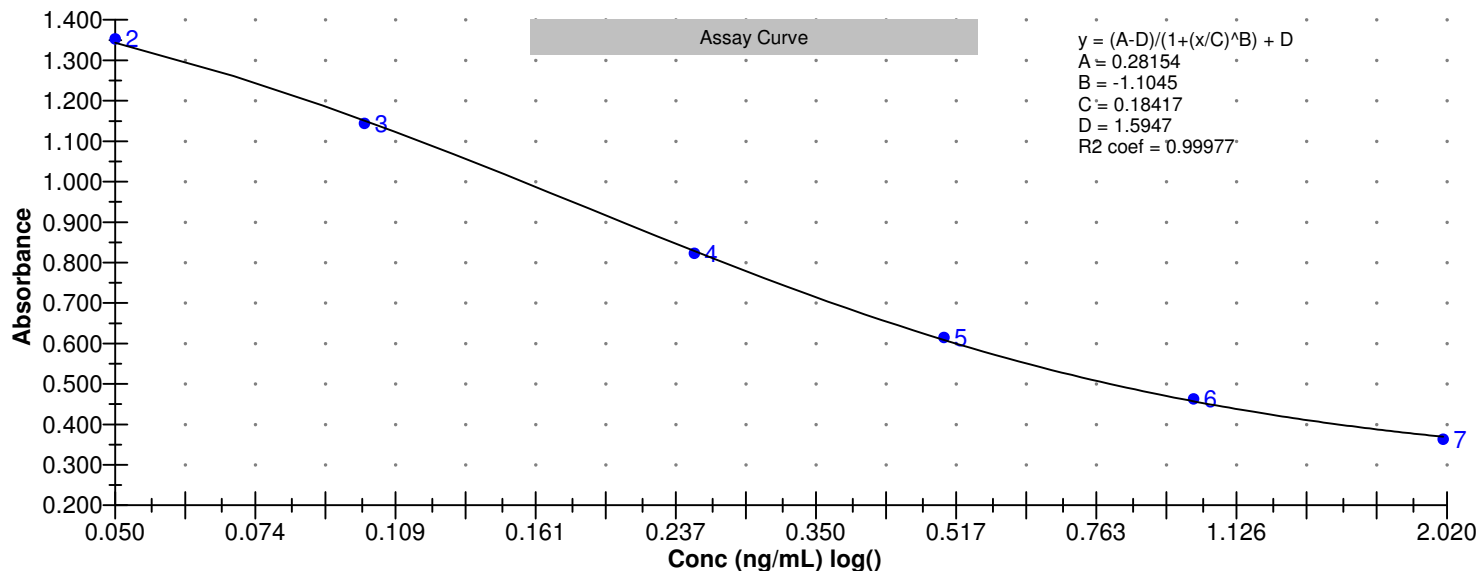
Curve valid interval: 7 days 0 hours

Axis Mode: Y = Abs, X = Log(Conc)

Assay Calibration and Statistics

Name	Absorbance	Concentration	Position
7/23/2015 1:06:28 PM			
Std1	1.608 Abs	< 0.000 ng/mL	A01
Std1	1.588 Abs	0.000 ng/mL	B01
Std1	1.581 Abs	0.000 ng/mL	C01
Std2	1.297 Abs	0.061 ng/mL	D01
Std2	1.390 Abs	0.040 ng/mL	E01
Std2	1.371 Abs	0.044 ng/mL	F01
Std3	1.123 Abs	0.109 ng/mL	G01
Std3	1.133 Abs	0.106 ng/mL	H01
Std3	1.176 Abs	0.093 ng/mL	A02
Std4	0.823 Abs	0.254 ng/mL	B02
Std4	0.829 Abs	0.250 ng/mL	C02
Std4	0.818 Abs	0.257 ng/mL	D02
Std5	0.599 Abs	0.519 ng/mL	E02
Std5	0.613 Abs	0.492 ng/mL	F02
Std5	0.633 Abs	0.458 ng/mL	G02
Std6	0.458 Abs	0.995 ng/mL	B03
Std6	0.488 Abs	0.842 ng/mL	H02
Std6	0.444 Abs	1.084 ng/mL	A03
Std7	0.367 Abs	> 2.000 ng/mL	C03
Std7	0.369 Abs	> 2.000 ng/mL	D03
Std7	0.352 Abs	> 2.000 ng/mL	E03
7/23/2015 1:06:28 PM			
Normal Control	0.497 Abs	0.804 ng/mL	F03
Normal Control	0.507 Abs	0.766 ng/mL	G03
Normal Control	0.517 Abs	0.730 ng/mL	H03

Name	Mean Abs	SD Abs	CV Abs	Mean Conc	SD Conc	CV Conc	Diff Conc
Std1	1.592	0.014	0.88				
Std2	1.353	0.049	3.63	0.048	0.011	23.07	-4.00





Assay Calibration Report

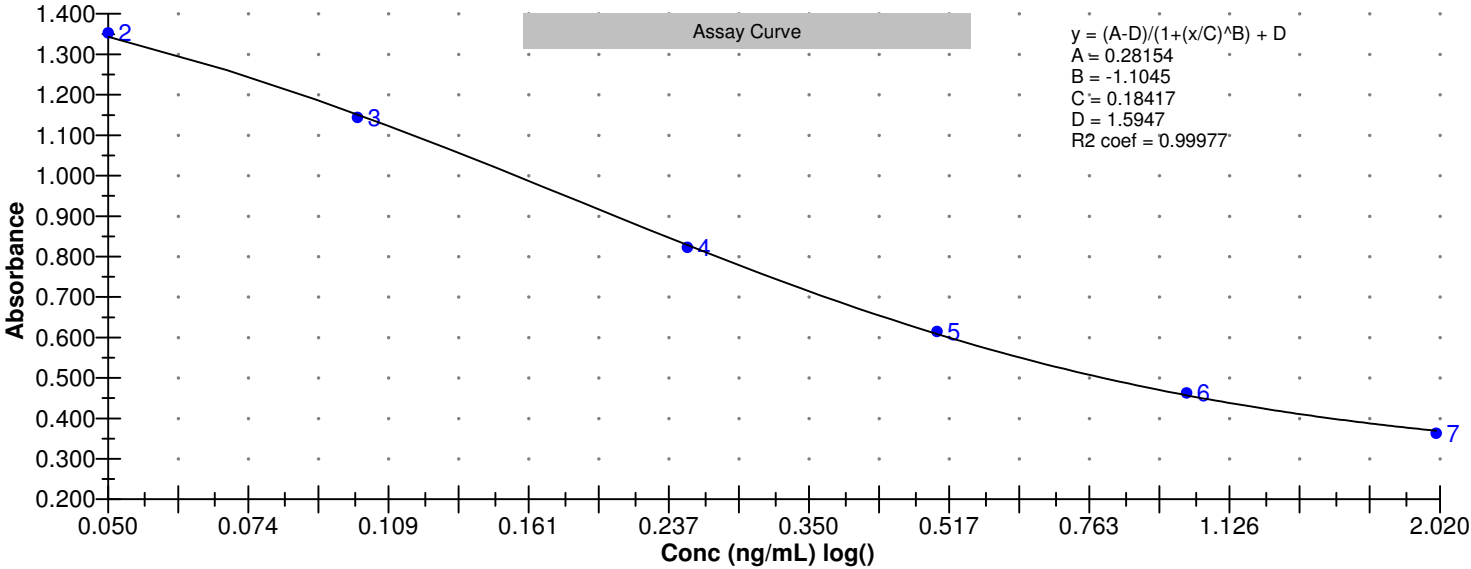
Assay Information

Assay Name: Cylindrospermopsin 1X Units: ng/mL
Assay Mode: 4-Parameter Logistic # of decimals: 3
Normal: 0.050 - 2.000 Assay Description:

Controls:
Normal Control
Standards:
Std1, Concentration = 0.000, Minimum number to use: 3
Std2, Concentration = 0.050, Minimum number to use: 3
Std3, Concentration = 0.100, Minimum number to use: 3
Std4, Concentration = 0.250, Minimum number to use: 3
Std5, Concentration = 0.500, Minimum number to use: 3
Std6, Concentration = 1.000, Minimum number to use: 3
Std7, Concentration = 2.000, Minimum number to use: 3
Curve valid interval: 7 days 0 hours
Axis Mode: Y = Abs, X = Log(Conc)

Assay Calibration and Statistics

Name	Mean Abs	SD Abs	CV Abs	Mean Conc	SD Conc	CV Conc	Diff Conc
Std3	1.144	0.028	2.46	0.103	0.009	8.28	3.00
Std4	0.823	0.006	0.67	0.254	0.004	1.38	1.60
Std5	0.615	0.017	2.78	0.490	0.031	6.24	-2.00
Std6	0.463	0.022	4.85	0.974	0.122	12.57	-2.60
Std7	0.363	0.009	2.56				-100.00
Normal Control	0.507	0.010	1.97	0.767	0.037	4.83	





Test Report

Test Information

Name/ID	Assay	Absorbance	Concentration	Interpretation	Reference	Position
7/23/2015 1:06:28 PM						
Std1	Cyldrospermopsin 1X	1.608 Abs	< 0.000 ng/mL		0.000	A01
Std1	Cyldrospermopsin 1X	1.588 Abs	0.000 ng/mL		0.000	B01
Std1	Cyldrospermopsin 1X	1.581 Abs	0.000 ng/mL		0.000	C01
Std2	Cyldrospermopsin 1X	1.297 Abs	0.061 ng/mL		0.050	D01
Std2	Cyldrospermopsin 1X	1.390 Abs	0.040 ng/mL		0.050	E01
Std2	Cyldrospermopsin 1X	1.371 Abs	0.044 ng/mL		0.050	F01
Std3	Cyldrospermopsin 1X	1.123 Abs	0.109 ng/mL		0.100	G01
Std3	Cyldrospermopsin 1X	1.133 Abs	0.106 ng/mL		0.100	H01
Std3	Cyldrospermopsin 1X	1.176 Abs	0.093 ng/mL		0.100	A02
Std4	Cyldrospermopsin 1X	0.823 Abs	0.254 ng/mL		0.250	B02
Std4	Cyldrospermopsin 1X	0.829 Abs	0.250 ng/mL		0.250	C02
Std4	Cyldrospermopsin 1X	0.818 Abs	0.257 ng/mL		0.250	D02
Std5	Cyldrospermopsin 1X	0.599 Abs	0.519 ng/mL		0.500	E02
Std5	Cyldrospermopsin 1X	0.613 Abs	0.492 ng/mL		0.500	F02
Std5	Cyldrospermopsin 1X	0.633 Abs	0.458 ng/mL		0.500	G02
Std6	Cyldrospermopsin 1X	0.488 Abs	0.842 ng/mL		1.000	H02
Std6	Cyldrospermopsin 1X	0.444 Abs	1.084 ng/mL		1.000	A03
Std6	Cyldrospermopsin 1X	0.458 Abs	0.995 ng/mL		1.000	B03
Std7	Cyldrospermopsin 1X	0.367 Abs	> 2.000 ng/mL		2.000	C03
Std7	Cyldrospermopsin 1X	0.369 Abs	> 2.000 ng/mL		2.000	D03
Std7	Cyldrospermopsin 1X	0.352 Abs	> 2.000 ng/mL		2.000	E03
Normal Control	Cyldrospermopsin 1X	0.497 Abs	0.804 ng/mL			F03
Normal Control	Cyldrospermopsin 1X	0.507 Abs	0.766 ng/mL			G03
Normal Control	Cyldrospermopsin 1X	0.517 Abs	0.730 ng/mL			H03
AB22601	Cyldrospermopsin 1X	1.554 Abs	0.000 ng/mL	LOW	0.050 - 2.000	A04
AB22601	Cyldrospermopsin 1X	1.631 Abs	< 0.000 ng/mL	Out(LR)	0.050 - 2.000	B04
AB22601	Cyldrospermopsin 1X	1.645 Abs	< 0.000 ng/mL	Out(LR)	0.050 - 2.000	C04
AB22602	Cyldrospermopsin 1X	1.656 Abs	< 0.000 ng/mL	Out(LR)	0.050 - 2.000	D04
AB22602	Cyldrospermopsin 1X	1.659 Abs	< 0.000 ng/mL	Out(LR)	0.050 - 2.000	E04
AB22602	Cyldrospermopsin 1X	1.664 Abs	< 0.000 ng/mL	Out(LR)	0.050 - 2.000	F04
AB22603	Cyldrospermopsin 1X	1.704 Abs	< 0.000 ng/mL	Out(LR)	0.050 - 2.000	G04
AB22603	Cyldrospermopsin 1X	1.673 Abs	< 0.000 ng/mL	Out(LR)	0.050 - 2.000	H04
AB22603	Cyldrospermopsin 1X	1.577 Abs	0.000 ng/mL	LOW	0.050 - 2.000	A05
AB22599	Cyldrospermopsin 1X	1.575 Abs	0.000 ng/mL	LOW	0.050 - 2.000	B05
AB22599	Cyldrospermopsin 1X	1.585 Abs	0.000 ng/mL	LOW	0.050 - 2.000	C05
AB22599	Cyldrospermopsin 1X	1.576 Abs	0.000 ng/mL	LOW	0.050 - 2.000	D05
AB22604	Cyldrospermopsin 1X	1.554 Abs	0.000 ng/mL	LOW	0.050 - 2.000	E05
AB22604	Cyldrospermopsin 1X	1.608 Abs	< 0.000 ng/mL	Out(LR)	0.050 - 2.000	F05
AB22604	Cyldrospermopsin 1X	1.628 Abs	< 0.000 ng/mL	Out(LR)	0.050 - 2.000	G05
AB22600	Cyldrospermopsin 1X	1.561 Abs	0.000 ng/mL	LOW	0.050 - 2.000	H05
AB22600	Cyldrospermopsin 1X	1.551 Abs	0.000 ng/mL	LOW	0.050 - 2.000	A06
AB22600	Cyldrospermopsin 1X	1.562 Abs	0.000 ng/mL	LOW	0.050 - 2.000	B06
20150721LB	Cyldrospermopsin 1X	1.558 Abs	0.000 ng/mL	LOW	0.050 - 2.000	C06
20150721LB	Cyldrospermopsin 1X	1.535 Abs	0.000 ng/mL	LOW	0.050 - 2.000	D06
20150721LB	Cyldrospermopsin 1X	1.522 Abs	0.000 ng/mL	LOW	0.050 - 2.000	E06
AB22604LD	Cyldrospermopsin 1X	1.561 Abs	0.000 ng/mL	LOW	0.050 - 2.000	F06
AB22604LD	Cyldrospermopsin 1X	1.522 Abs	0.000 ng/mL	LOW	0.050 - 2.000	G06
AB22604LD	Cyldrospermopsin 1X	1.521 Abs	0.000 ng/mL	LOW	0.050 - 2.000	H06

The data in this report is preliminary without a quality control report. This data is not warranted for accuracy or other purposes.

Laboratory Analyst Signature

7/24/2015

Date