



Anatoxin-a ELISA Summary Report

Office of Water Quality - Watershed Assessment and Planning Branch

Sample #	Location	Date Collected	Date Analyzed	Conc. (ppb)
AB33083	Pokagon State Park	6/19/2018	6/21/2018	< 0.400
AB33084	Southern Basin Inn's Beach	6/19/2018	6/21/2018	0.694
AB33085	Chain O'Lakes State Park	6/19/2018	6/21/2018	< 0.400
AB33086	Kunkel Beach @ Quabache State Park	6/19/2018	6/21/2018	< 0.400
AB33087	Pokagon (Field Duplicate)	6/19/2018	6/21/2018	< 0.400
AB33088	Field Blank	6/19/2018	6/21/2018	< 0.400
AB33089	Potato Creek State Park	6/18/2018	6/21/2018	< 0.400
AB33090	Mississinewa Lake Miami SRA	6/18/2018	6/21/2018	< 0.400
AB33091	Lost Bridge West Lake SRA	6/18/2018	6/21/2018	< 0.400
AB33378	Dog Park Lake	6/18/2018	6/21/2018	< 0.400
AB33093	Field Blank	6/18/2018	6/21/2018	< 0.400
AB33090LD	Mississinewa (Lab Duplicate)	6/18/2018	6/21/2018	< 0.400
20180619LB	Lab Blank	6/19/2018	6/21/2018	< 0.400



Test Report

Test Information

Name/ID	Assay	Absorbance	Concentration	Interpretation	Reference	Position
6/21/2018 2:44:39 PM						
Std1	Anatoxin a ELISA (2 rep)	1.394 Abs	< 0.000 ng/mL		0.000	A01
Std1	Anatoxin a ELISA (2 rep)	1.408 Abs	< 0.000 ng/mL		0.000	B01
Std2	Anatoxin a ELISA (2 rep)	1.257 Abs	0.291 ng/mL		0.150	C01
Std2	Anatoxin a ELISA (2 rep)	1.318 Abs	0.160 ng/mL		0.150	D01
Std3	Anatoxin a ELISA (2 rep)	1.168 Abs	0.478 ng/mL		0.400	E01
Std3	Anatoxin a ELISA (2 rep)	1.231 Abs	0.346 ng/mL		0.400	F01
Std4	Anatoxin a ELISA (2 rep)	0.952 Abs	1.000 ng/mL		1.000	G01
Std4	Anatoxin a ELISA (2 rep)	1.020 Abs	0.819 ng/mL		1.000	H01
Std5	Anatoxin a ELISA (2 rep)	0.552 Abs	2.991 ng/mL		2.500	A02
Std5	Anatoxin a ELISA (2 rep)	0.602 Abs	2.570 ng/mL		2.500	B02
Std6	Anatoxin a ELISA (2 rep)	0.431 Abs	4.629 ng/mL		5.000	C02
Std6	Anatoxin a ELISA (2 rep)	0.428 Abs	4.689 ng/mL		5.000	D02
Normal Control	Anatoxin a ELISA (2 rep)	0.990 Abs	0.900 ng/mL			E02
Normal Control	Anatoxin a ELISA (2 rep)	0.965 Abs	0.966 ng/mL			F02
AB33083	Anatoxin a ELISA (2 rep)	1.371 Abs	0.075 ng/mL	LOW	0.150 - 5.000	G02
AB33083	Anatoxin a ELISA (2 rep)	0.736 Abs [1.0585] [42.6]	1.941 ng/mL [0.818] [180.9 CV]		0.150 - 5.000	H02
AB33084	Anatoxin a ELISA (2 rep)	0.995 Abs	0.887 ng/mL		0.150 - 5.000	A03
AB33084	Anatoxin a ELISA (2 rep)	1.156 Abs [1.0755] [10.6]	0.519 ng/mL [0.694] [37.0 CV]		0.150 - 5.000	B03
AB33085	Anatoxin a ELISA (2 rep)	1.231 Abs	0.403 ng/mL		0.150 - 5.000	C03
AB33085	Anatoxin a ELISA (2 rep)	1.336 Abs [1.2835] [5.8 C]	0.166 ng/mL [0.287] [58.9 CV]		0.150 - 5.000	D03
AB33086	Anatoxin a ELISA (2 rep)	1.340 Abs	0.156 ng/mL		0.150 - 5.000	E03
AB33086	Anatoxin a ELISA (2 rep)	1.360 Abs [1.3500] [1.0 C]	0.106 ng/mL [0.131] [27.0 CV]	Low [Low]	0.150 - 5.000	F03
AB33087	Anatoxin a ELISA (2 rep)	1.307 Abs	0.234 ng/mL		0.150 - 5.000	G03
AB33087	Anatoxin a ELISA (2 rep)	1.393 Abs [1.3500] [4.5 C]	< 0.000 ng/mL [0.131]	Out(LR) [Low]	0.150 - 5.000	H03
AB33088	Anatoxin a ELISA (2 rep)	1.033 Abs	0.872 ng/mL		0.150 - 5.000	A04
AB33088	Anatoxin a ELISA (2 rep)	1.289 Abs [1.1610] [15.6]	0.274 ng/mL [0.559] [73.8 CV]		0.150 - 5.000	B04
AB33089	Anatoxin a ELISA (2 rep)	1.439 Abs	< 0.000 ng/mL	Out(LR)	0.150 - 5.000	C04
AB33089	Anatoxin a ELISA (2 rep)	1.447 Abs [1.4430] [0.4 C]	< 0.000 ng/mL [< 0.000]	Out(LR) [Out(LR)]	0.150 - 5.000	D04
AB33090	Anatoxin a ELISA (2 rep)	1.312 Abs	0.222 ng/mL		0.150 - 5.000	E04
AB33090	Anatoxin a ELISA (2 rep)	1.428 Abs [1.3700] [6.0 C]	< 0.000 ng/mL [0.077]	Out(LR) [Low]	0.150 - 5.000	F04
AB33091	Anatoxin a ELISA (2 rep)	1.295 Abs	0.261 ng/mL		0.150 - 5.000	G04
AB33091	Anatoxin a ELISA (2 rep)	1.340 Abs [1.3175] [2.4 C]	0.156 ng/mL [0.210] [35.6 CV]		0.150 - 5.000	H04
AB33378	Anatoxin a ELISA (2 rep)	1.282 Abs	0.290 ng/mL		0.150 - 5.000	A05
AB33378	Anatoxin a ELISA (2 rep)	1.250 Abs [1.2660] [1.8 C]	0.361 ng/mL [0.326] [15.4 CV]		0.150 - 5.000	B05
AB33093	Anatoxin a ELISA (2 rep)	1.195 Abs	0.483 ng/mL		0.150 - 5.000	C05
AB33093	Anatoxin a ELISA (2 rep)	1.274 Abs [1.2345] [4.5 C]	0.308 ng/mL [0.395] [31.3 CV]		0.150 - 5.000	D05
AB33090LD	Anatoxin a ELISA (2 rep)	1.214 Abs	0.440 ng/mL		0.150 - 5.000	E05
AB33090LD	Anatoxin a ELISA (2 rep)	1.289 Abs [1.2515] [4.2 C]	0.274 ng/mL [0.357] [32.9 CV]		0.150 - 5.000	F05
20180619LB	Anatoxin a ELISA (2 rep)	1.332 Abs	0.176 ng/mL		0.150 - 5.000	G05
20180619LB	Anatoxin a ELISA (2 rep)	1.369 Abs [1.3505] [1.9 C]	0.080 ng/mL [0.130] [53.0 CV]	Low [Low]	0.150 - 5.000	H05

The data in this report is preliminary without a quality control report. This data is not warranted for accuracy or other purposes.

David Jordan

Laboratory Analyst Signature

6/21/18

Date



Assay Calibration Report

Assay Information

Assay Name: Anatoxin a ELISA (2 rep) Units: ng/mL
Assay Mode: 4-Parameter Logistic Weight # of decimals: 3
Normal: 0.000 Assay Description: ELISA

Controls:
Normal Control

Standards:

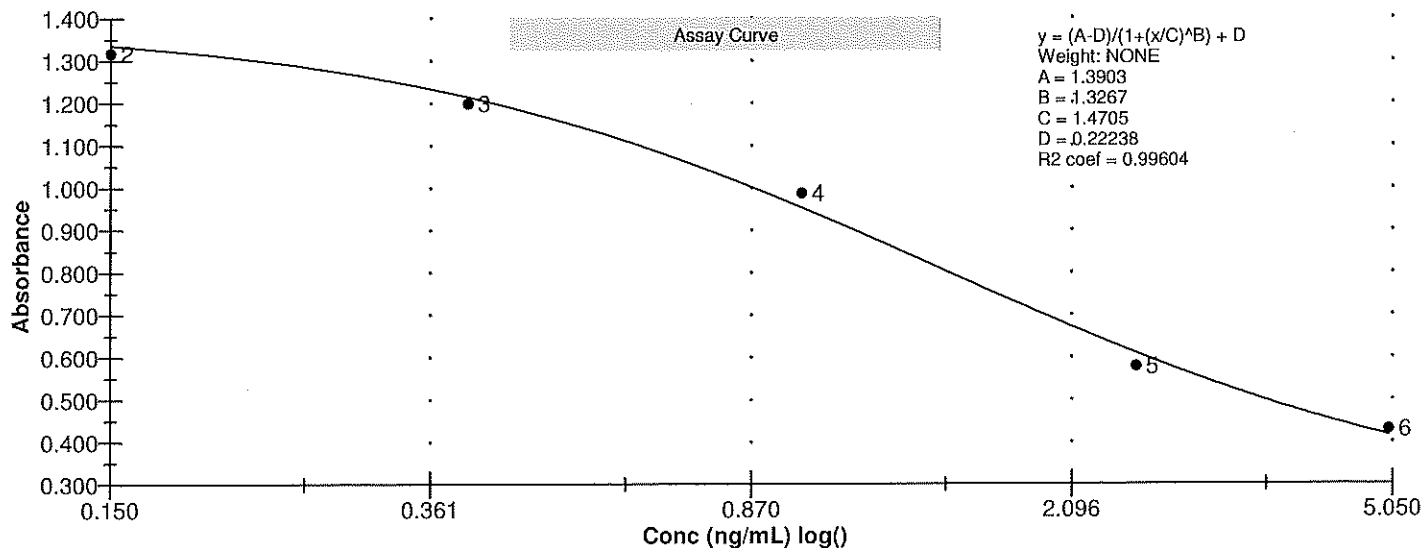
Std1, Concentration = 0.000, Minimum number to use: 2
Std2, Concentration = 0.150, Minimum number to use: 2
Std3, Concentration = 0.400, Minimum number to use: 2
Std4, Concentration = 1.000, Minimum number to use: 2
Std5, Concentration = 2.500, Minimum number to use: 2
Std6, Concentration = 5.000, Minimum number to use: 2

Curve valid interval: 7 days 0 hours

Assay Calibration and Statistics

Name	Absorbance	Concentration	Position
6/21/2018 2:44:39 PM			
Std1	1.408 Abs	< 0.000 ng/mL	B01
Std2	1.318 Abs	0.190 ng/mL	D01
Std3	1.168 Abs	0.494 ng/mL	E01
Std3	1.231 Abs	0.366 ng/mL	F01
Std4	0.952 Abs	1.002 ng/mL	G01
Std4	1.020 Abs	0.825 ng/mL	H01
Std5	0.552 Abs	2.972 ng/mL	A02
Std5	0.602 Abs	2.551 ng/mL	B02
Std6	0.431 Abs	4.644 ng/mL	C02
Std6	0.428 Abs	4.706 ng/mL	D02
6/21/2018 2:44:39 PM			
Normal Control	0.965 Abs	0.966 ng/mL	F02
Normal Control	0.990 Abs	0.900 ng/mL	E02

Name	Mean Abs	SD Abs	CV Abs	Mean Conc	SD Conc	CV Conc	Diff Conc
Std1	1.408						
Std2	1.318			0.190			26.67
Std3	1.199	0.045	3.71	0.430	0.091	21.05	7.50
Std4	0.986	0.048	4.88	0.913	0.125	13.70	-8.70
Std5	0.577	0.035	6.13	2.761	0.298	10.78	10.44
Std6	0.429	0.002	0.49	4.675	0.044	0.94	-6.50
Normal Control	0.977	0.018	1.81	0.933	0.047	5.00	





Test Report

Test Information

Name/ID	Assay	Absorbance	Concentration	Interpretation	Reference	Position
6/22/2018 10:29:48 AM						
Std1	Anatoxin a ELISA (2 rep)	1.142 Abs	0.269 ng/mL		0.000	A01
Std1	Anatoxin a ELISA (2 rep)	1.330 Abs	< 0.000 ng/mL		0.000	B01
Std2	Anatoxin a ELISA (2 rep)	1.053 Abs	0.514 ng/mL		0.150	C01
Std2	Anatoxin a ELISA (2 rep)	1.402 Abs	< 0.000 ng/mL		0.150	D01
Std3	Anatoxin a ELISA (2 rep)	1.014 Abs	0.631 ng/mL		0.400	E01
Std3	Anatoxin a ELISA (2 rep)	1.060 Abs	0.494 ng/mL		0.400	F01
Std4	Anatoxin a ELISA (2 rep)	0.963 Abs	0.797 ng/mL		1.000	G01
Std4	Anatoxin a ELISA (2 rep)	0.928 Abs	0.920 ng/mL		1.000	H01
Std5	Anatoxin a ELISA (2 rep)	0.604 Abs	2.707 ng/mL		2.500	A02
Std5	Anatoxin a ELISA (2 rep)	0.617 Abs	2.598 ng/mL		2.500	B02
Std6	Anatoxin a ELISA (2 rep)	0.420 Abs	> 5.000 ng/mL		5.000	C02
Std6	Anatoxin a ELISA (2 rep)	0.439 Abs	4.714 ng/mL		5.000	D02
Normal Control	Anatoxin a ELISA (2 rep)	0.931 Abs	0.663 ng/mL			E02
Normal Control	Anatoxin a ELISA (2 rep)	0.835 Abs	1.134 ng/mL			F02
AB33083	Anatoxin a ELISA (2 rep)	1.199 Abs	0.042 ng/mL	LOW	0.150 - 5.000	G02
AB33083	Anatoxin a ELISA (2 rep)	1.024 Abs [1.1115] {11.1	0.375 ng/mL [0.160] {112.9 CV		0.150 - 5.000	H02
AB33088	Anatoxin a ELISA (2 rep)	1.230 Abs	0.020 ng/mL	LOW	0.150 - 5.000	A03
AB33088	Anatoxin a ELISA (2 rep)	1.258 Abs [1.2440] {1.6 C	0.008 ng/mL [0.013] {60.6 CV}	Low [Low]	0.150 - 5.000	B03

The data in this report is preliminary without a quality control report. This data is not warranted for accuracy or other purposes.

David Jordan

Laboratory Analyst Signature

6/22/18

Date



Assay Calibration Report

Assay Information

Assay Name: Anatoxin a ELISA (2 rep) Units: ng/mL
 Assay Mode: 4-Parameter Logistic Weight # of decimals: 3
 Normal: 0.000 Assay Description: ELISA

Controls:

Normal Control

Standards:

Std1, Concentration = 0.000, Minimum number to use: 2

Std2, Concentration = 0.150, Minimum number to use: 2

Std3, Concentration = 0.400, Minimum number to use: 2

Std4, Concentration = 1.000, Minimum number to use: 2

Std5, Concentration = 2.500, Minimum number to use: 2

Std6, Concentration = 5.000, Minimum number to use: 2

Curve valid interval: 7 days 0 hours

Assay Calibration and Statistics

Name	Absorbance	Concentration	Position
6/22/2018 10:29:48 AM			
Std1	1.330 Abs	< 0.000 ng/mL	B01
Std2	1.053 Abs	0.265 ng/mL	C01
Std3	1.014 Abs	0.370 ng/mL	E01
Std4	0.928 Abs	0.676 ng/mL	H01
Std5	0.604 Abs	2.918 ng/mL	A02
Std5	0.617 Abs	2.792 ng/mL	B02
Std6	0.420 Abs	> 5.000 ng/mL	C02
Std6	0.439 Abs	4.826 ng/mL	D02
6/22/2018 10:29:48 AM			
Normal Control	0.835 Abs	1.134 ng/mL	F02
Normal Control	0.931 Abs	0.663 ng/mL	E02

Name	Mean Abs	SD Abs	CV Abs	Mean Conc	SD Conc	CV Conc	Diff Conc
Std1	1.330						
Std2	1.053			0.265			76.67
Std3	1.014			0.370			-7.50
Std4	0.928			0.676			-32.40
Std5	0.610	0.009	1.51	2.855	0.089	3.12	14.20
Std6	0.429	0.013	3.13				-100.00
Normal Control	0.883	0.068	7.69	0.898	0.333	37.07	

