



Anatoxin-A ELISA Summary Report

Office of Water Quality - Watershed Assessment and Planning Branch

Sample #	Location	Date Collected	Date Analyzed	Conc. (ppb)
AB30330	Southern Basin Inn's Beach	8/28/2017	8/30/2017	< 0.40
AB30331	Chain O'Lakes SP	8/28/2017	8/30/2017	< 0.40
AB30332	Lost Bridge West SRA	8/28/2017	8/30/2017	< 0.40
AB30333	Mississinewa Lake Miami SRA	8/29/2017	8/30/2017	< 0.40
AB30334	Potato Creek SP	8/29/2017	8/30/2017	< 0.40
AB30335	Lost Bridge West (Field Duplicate)	8/28/2017	8/30/2017	< 0.40
AB30336	Field Blank	8/28/2017	8/30/2017	< 0.40
AB30333LD	Mississinewa (Lab Duplicate)	8/29/2017	8/30/2017	< 0.40
20170830LB	Lab Blank	8/30/2017	8/30/2017	< 0.40



Assay Calibration Report

Assay Information

Assay Name: Anatoxin a ELISA (2 rep) Units: ng/mL
 Assay Mode: 4-Parameter Logistic # of decimals: 3
 Normal: 0.150 - 5.000 Assay Description: ISA

Controls:

Normal Control

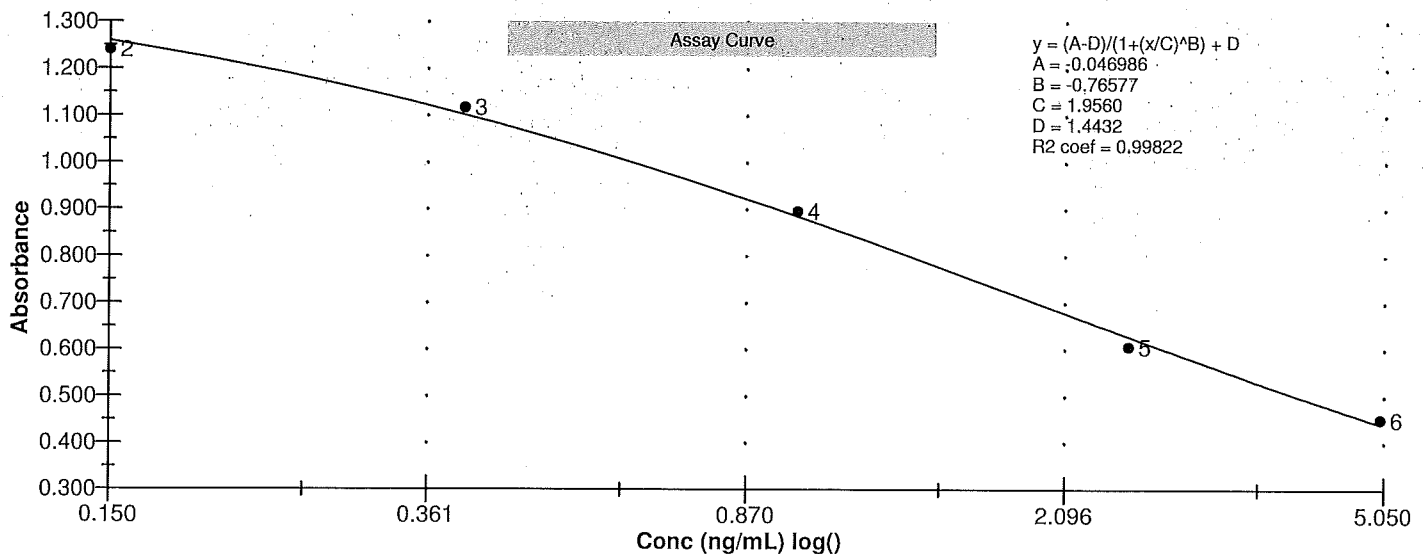
Standards:

Std1, Concentration = 0.000, Minimum number to use: 2
 Std2, Concentration = 0.150, Minimum number to use: 2
 Std3, Concentration = 0.400, Minimum number to use: 2
 Std4, Concentration = 1.000, Minimum number to use: 2
 Std5, Concentration = 2.500, Minimum number to use: 2
 Std6, Concentration = 5.000, Minimum number to use: 2
 Curve valid interval: 7 days 0 hours
 Axis Mode: Y = Abs, X = Log(Conc)

Assay Calibration and Statistics

Name	Absorbance	Concentration	Position
8/30/2017 1:18:17 PM			
Std1	1.502 Abs	< 0.000 ng/mL	A01
Std1	1.394 Abs	0.024 ng/mL	B01
Std2	1.267 Abs	0.142 ng/mL	C01
Std2	1.215 Abs	0.210 ng/mL	D01
Std3	1.118 Abs	0.370 ng/mL	E01
Std3	1.117 Abs	0.371 ng/mL	F01
Std4	0.881 Abs	1.017 ng/mL	G01
Std4	0.912 Abs	0.905 ng/mL	H01
Std5	0.583 Abs	2.939 ng/mL	A02
Std5	0.631 Abs	2.477 ng/mL	B02
Std6	0.455 Abs	4.739 ng/mL	C02
Std6	0.446 Abs	4.910 ng/mL	D02
8/30/2017 1:18:17 PM			
Normal Control	0.989 Abs	0.666 ng/mL	F02
Normal Control	0.956 Abs	0.762 ng/mL	E02

Name	Mean Abs	SD Abs	CV Abs	Mean Conc	SD Conc	CV Conc	Diff Conc
Std1	1.448	0.076	5.27				
Std2	1.241	0.037	2.96	0.176	0.048	27.32	17.33
Std3	1.118	0.001	0.06	0.370	0.001	0.19	-7.50
Std4	0.896	0.022	2.45	0.961	0.079	8.24	-3.90
Std5	0.607	0.034	5.59	2.708	0.327	12.06	8.32
Std6	0.451	0.006	1.41	4.825	0.121	2.51	-3.50
Normal Control	0.972	0.023	2.40	0.714	0.068	9.51	





Test Report

Test Information

Name/ID	Assay	Absorbance	Concentration	Interpretation	Reference	Position
8/30/2017 1:18:17 PM						
Std1	Anatoxin a ELISA (2 rep)	1.502 Abs	< 0.000 ng/mL		0.000	A01
Std1	Anatoxin a ELISA (2 rep)	1.394 Abs	0.024 ng/mL		0.000	B01
Std2	Anatoxin a ELISA (2 rep)	1.267 Abs	0.142 ng/mL		0.150	C01
Std2	Anatoxin a ELISA (2 rep)	1.215 Abs	0.210 ng/mL		0.150	D01
Std3	Anatoxin a ELISA (2 rep)	1.118 Abs	0.370 ng/mL		0.400	E01
Std3	Anatoxin a ELISA (2 rep)	1.117 Abs	0.371 ng/mL		0.400	F01
Std4	Anatoxin a ELISA (2 rep)	0.881 Abs	1.017 ng/mL		1.000	G01
Std4	Anatoxin a ELISA (2 rep)	0.912 Abs	0.905 ng/mL		1.000	H01
Std5	Anatoxin a ELISA (2 rep)	0.583 Abs	2.939 ng/mL		2.500	A02
Std5	Anatoxin a ELISA (2 rep)	0.631 Abs	2.477 ng/mL		2.500	B02
Std6	Anatoxin a ELISA (2 rep)	0.455 Abs	4.739 ng/mL		5.000	C02
Std6	Anatoxin a ELISA (2 rep)	0.446 Abs	4.910 ng/mL		5.000	D02
Normal Control	Anatoxin a ELISA (2 rep)	0.956 Abs	0.762 ng/mL			E02
Normal Control	Anatoxin a ELISA (2 rep)	0.989 Abs	0.666 ng/mL			F02
AB30330	Anatoxin a ELISA (2 rep)	1.466 Abs	< 0.000 ng/mL	Out(LR)	0.150 - 5.000	G02
AB30330	Anatoxin a ELISA (2 rep)	1.502 Abs [1.4840] {1.7 C	< 0.000 ng/mL [< 0.000]	Out(LR) [Out(LR)]	0.150 - 5.000	H02
AB30331	Anatoxin a ELISA (2 rep)	1.204 Abs	0.249 ng/mL		0.150 - 5.000	A03
AB30331	Anatoxin a ELISA (2 rep)	1.229 Abs [1.2165] {1.5 C	0.209 ng/mL [0.228] {12.4 CV}		0.150 - 5.000	B03
AB30332	Anatoxin a ELISA (2 rep)	1.347 Abs	0.066 ng/mL	LOW	0.150 - 5.000	C03
AB30332	Anatoxin a ELISA (2 rep)	1.153 Abs [1.2500] {11.0	0.337 ng/mL [0.179] {95.1 CV}		0.150 - 5.000	D03
AB30333	Anatoxin a ELISA (2 rep)	1.233 Abs	0.204 ng/mL		0.150 - 5.000	E03
AB30333	Anatoxin a ELISA (2 rep)	1.390 Abs [1.3115] {8.5 C	0.029 ng/mL [0.102] {106.2 CV}	Low [Low]	0.150 - 5.000	F03
AB30334	Anatoxin a ELISA (2 rep)	1.351 Abs	0.062 ng/mL	LOW	0.150 - 5.000	G03
AB30334	Anatoxin a ELISA (2 rep)	1.403 Abs [1.3770] {2.7 C	0.020 ng/mL [0.040] {72.4 CV}	Low [Low]	0.150 - 5.000	H03
AB30335	Anatoxin a ELISA (2 rep)	1.167 Abs	0.311 ng/mL		0.150 - 5.000	A04
AB30335	Anatoxin a ELISA (2 rep)	1.279 Abs [1.2230] {6.5 C	0.141 ng/mL [0.219] {53.2 CV}	LOW	0.150 - 5.000	B04
AB30336	Anatoxin a ELISA (2 rep)	1.142 Abs	0.359 ng/mL		0.150 - 5.000	C04
AB30336	Anatoxin a ELISA (2 rep)	1.176 Abs [1.1590] {2.1 C	0.296 ng/mL [0.326] {13.6 CV}		0.150 - 5.000	D04
AB30337	Anatoxin a ELISA (2 rep)	1.239 Abs	0.195 ng/mL		0.150 - 5.000	E04
AB30337	Anatoxin a ELISA (2 rep)	1.238 Abs [1.2385] {0.1 C	0.196 ng/mL [0.195] {0.4 CV}		0.150 - 5.000	F04
AB30333LD	Anatoxin a ELISA (2 rep)	1.358 Abs	0.055 ng/mL	LOW	0.150 - 5.000	G04
AB30333LD	Anatoxin a ELISA (2 rep)	1.380 Abs [1.3690] {1.1 C	0.036 ng/mL [0.046] {29.5 CV}	Low [Low]	0.150 - 5.000	H04
20170830LB	Anatoxin a ELISA (2 rep)	1.350 Abs	0.063 ng/mL	LOW	0.150 - 5.000	A05
20170830LB	Anatoxin a ELISA (2 rep)	1.368 Abs [1.3590] {0.9 C	0.046 ng/mL [0.054] {22.1 CV}	Low [Low]	0.150 - 5.000	B05

The data in this report is preliminary without a quality control report. This data is not warranted for accuracy or other purposes.

Betty Ruth for David Swanson
Laboratory Analyst Signature

8/31/17
Date