



## Anatoxin-A ELISA Summary Report

Office of Water Quality - Watershed Assessment and Planning Branch

Sample #	Location	Date Collected	Date Analyzed	Conc. (ppb)
AB29917	Pokagon SP	7/17/2017	7/19/2017	< 0.40
AB29918	Southern Basin Inn's Beach	7/17/2017	7/19/2017	< 0.40
AB29919	Chain O'Lakes SP	7/17/2017	7/19/2017	3.314
AB29920	Lost Bridge West SRA	7/17/2017	7/19/2017	< 0.40
AB29921	Mississinewa Lake Miami SRA	7/18/2017	7/19/2017	< 0.40
AB29922	Potato Creek SP	7/18/2017	7/19/2017	0.753
AB29922LD	Potato Creek (Lab Duplicate)	7/18/2017	7/19/2017	0.761
AB29915	Mississinewa (Field Duplicate)	7/18/2017	7/19/2017	< 0.40
AB29916	Field Blank	7/18/2017	7/19/2017	< 0.40
20170719LB	Lab Blank	7/19/2017	7/19/2017	< 0.40



# Assay Calibration Report

## Assay Information

Assay Name: Anatoxin a ELISA (2 rep) Units: ng/mL  
 Assay Mode: 4-Parameter Logistic # of decimals: 3  
 Normal: 0.150 - 5.000 Assay Description: ISA

## Controls:

Normal Control

## Standards:

Std1, Concentration = 0.000, Minimum number to use: 2  
 Std2, Concentration = 0.150, Minimum number to use: 2  
 Std3, Concentration = 0.400, Minimum number to use: 2  
 Std4, Concentration = 1.000, Minimum number to use: 2  
 Std5, Concentration = 2.500, Minimum number to use: 2  
 Std6, Concentration = 5.000, Minimum number to use: 2

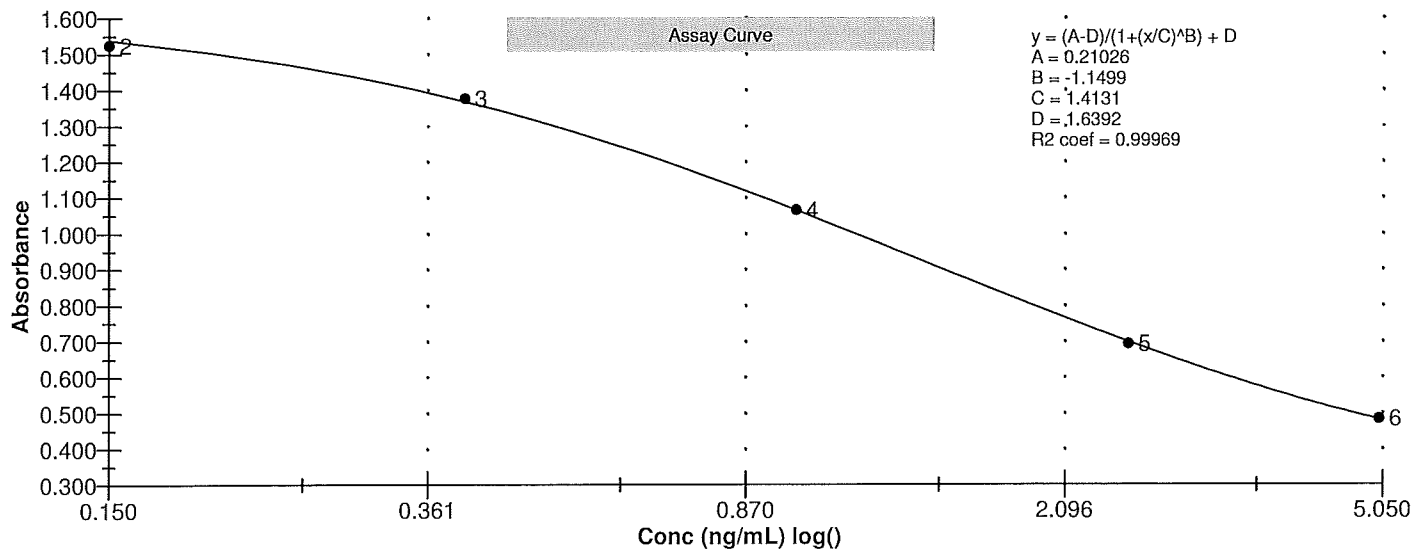
Curve valid interval: 7 days 0 hours

Axis Mode: Y = Abs, X = Log(Conc)

## Assay Calibration and Statistics

Name	Absorbance	Concentration	Position
7/19/2017 1:02:40 PM			
Std1	1.700 Abs	< 0.000 ng/mL	A01
Std1	1.591 Abs	0.076 ng/mL	B01
Std2	1.551 Abs	0.132 ng/mL	C01
Std2	1.499 Abs	0.205 ng/mL	D01
Std3	1.367 Abs	0.401 ng/mL	E01
Std3	1.386 Abs	0.372 ng/mL	F01
Std4	1.049 Abs	1.041 ng/mL	G01
Std4	1.083 Abs	0.955 ng/mL	H01
Std5	0.686 Abs	2.586 ng/mL	A02
Std5	0.701 Abs	2.483 ng/mL	B02
Std6	0.487 Abs	4.885 ng/mL	C02
Std6	0.482 Abs	4.980 ng/mL	D02
7/19/2017 1:02:40 PM			
Normal Control	1.183 Abs	0.732 ng/mL	F02
Normal Control	1.092 Abs	0.933 ng/mL	E02

Name	Mean Abs	SD Abs	CV Abs	Mean Conc	SD Conc	CV Conc	Diff Conc
Std1	1.645	0.077	4.68				
Std2	1.525	0.037	2.41	0.169	0.052	30.63	12.67
Std3	1.377	0.013	0.98	0.387	0.021	5.31	-3.25
Std4	1.066	0.024	2.26	0.998	0.061	6.09	-0.20
Std5	0.693	0.011	1.53	2.535	0.073	2.87	1.40
Std6	0.484	0.004	0.73	4.932	0.067	1.36	-1.36
Normal Control	1.138	0.064	5.66	0.832	0.142	17.07	





# Test Report

## Test Information

Name/ID	Assay	Absorbance	Concentration	Interpretation	Reference	Position
7/19/2017 1:02:40 PM						
Std1	Anatoxin a ELISA (2 rep)	1.700 Abs	< 0.000 ng/mL		0.000	A01
Std1	Anatoxin a ELISA (2 rep)	1.591 Abs	0.076 ng/mL		0.000	B01
Std2	Anatoxin a ELISA (2 rep)	1.551 Abs	0.132 ng/mL		0.150	C01
Std2	Anatoxin a ELISA (2 rep)	1.499 Abs	0.205 ng/mL		0.150	D01
Std3	Anatoxin a ELISA (2 rep)	1.367 Abs	0.401 ng/mL		0.400	E01
Std3	Anatoxin a ELISA (2 rep)	1.386 Abs	0.372 ng/mL		0.400	F01
Std4	Anatoxin a ELISA (2 rep)	1.049 Abs	1.041 ng/mL		1.000	G01
Std4	Anatoxin a ELISA (2 rep)	1.083 Abs	0.955 ng/mL		1.000	H01
Std5	Anatoxin a ELISA (2 rep)	0.686 Abs	2.586 ng/mL		2.500	A02
Std5	Anatoxin a ELISA (2 rep)	0.701 Abs	2.483 ng/mL		2.500	B02
Std6	Anatoxin a ELISA (2 rep)	0.487 Abs	4.885 ng/mL		5.000	C02
Std6	Anatoxin a ELISA (2 rep)	0.482 Abs	4.980 ng/mL		5.000	D02
Normal Control	Anatoxin a ELISA (2 rep)	1.092 Abs	0.933 ng/mL			E02
Normal Control	Anatoxin a ELISA (2 rep)	1.183 Abs	0.732 ng/mL			F02
AB29917	Anatoxin a ELISA (2 rep)	1.620 Abs	0.037 ng/mL	LOW	0.150 - 5.000	G02
AB29917	Anatoxin a ELISA (2 rep)	1.592 Abs [1.6060] {1.2 C	0.083 ng/mL [0.060] {54.2 CV}	Low [Low]	0.150 - 5.000	H02
AB29918	Anatoxin a ELISA (2 rep)	1.471 Abs	0.270 ng/mL		0.150 - 5.000	A03
AB29918	Anatoxin a ELISA (2 rep)	1.547 Abs [1.5090] {3.6 C	0.152 ng/mL [0.210] {39.5 CV}		0.150 - 5.000	B03
AB29919	Anatoxin a ELISA (2 rep)	0.641 Abs	3.228 ng/mL		0.150 - 5.000	C03
AB29919	Anatoxin a ELISA (2 rep)	0.662 Abs [0.6515] {2.3 C	3.042 ng/mL [3.134] {4.2 CV}		0.150 - 5.000	D03
AB29920	Anatoxin a ELISA (2 rep)	1.434 Abs	0.329 ng/mL		0.150 - 5.000	E03
AB29920	Anatoxin a ELISA (2 rep)	1.580 Abs [1.5070] {6.9 C	0.101 ng/mL [0.213] {75.0 CV}	LOW	0.150 - 5.000	F03
AB29921	Anatoxin a ELISA (2 rep)	1.446 Abs	0.310 ng/mL		0.150 - 5.000	G03
AB29921	Anatoxin a ELISA (2 rep)	1.418 Abs [1.4320] {1.4 C	0.355 ng/mL [0.332] {9.6 CV}		0.150 - 5.000	H03
AB29922	Anatoxin a ELISA (2 rep)	0.991 Abs	1.322 ng/mL		0.150 - 5.000	A04
AB29922	Anatoxin a ELISA (2 rep)	1.421 Abs [1.2060] {25.2	0.351 ng/mL [0.753] {82.1 CV}		0.150 - 5.000	B04
AB29922LD	Anatoxin a ELISA (2 rep)	1.136 Abs	0.914 ng/mL		0.150 - 5.000	C04
AB29922LD	Anatoxin a ELISA (2 rep)	1.269 Abs [1.2025] {7.8 C	0.624 ng/mL [0.761] {26.7 CV}		0.150 - 5.000	D04
AB29915	Anatoxin a ELISA (2 rep)	1.418 Abs	0.355 ng/mL		0.150 - 5.000	E04
AB29915	Anatoxin a ELISA (2 rep)	1.522 Abs [1.4700] {5.0 C	0.190 ng/mL [0.272] {42.8 CV}		0.150 - 5.000	F04
AB29916	Anatoxin a ELISA (2 rep)	1.396 Abs	0.392 ng/mL		0.150 - 5.000	G04
AB29916	Anatoxin a ELISA (2 rep)	1.569 Abs [1.4825] {8.3 C	0.119 ng/mL [0.252] {75.6 CV}	LOW	0.150 - 5.000	H04
AB29923	Anatoxin a ELISA (2 rep)	1.508 Abs	0.211 ng/mL		0.150 - 5.000	A05
AB29923	Anatoxin a ELISA (2 rep)	1.371 Abs [1.4395] {6.7 C	0.435 ng/mL [0.320] {49.0 CV}		0.150 - 5.000	B05
20170719LB	Anatoxin a ELISA (2 rep)	1.446 Abs	0.310 ng/mL		0.150 - 5.000	C05
20170719LB	Anatoxin a ELISA (2 rep)	1.509 Abs [1.4775] {3.0 C	0.210 ng/mL [0.260] {27.2 CV}		0.150 - 5.000	D05

The data in this report is preliminary without a quality control report. This data is not warranted for accuracy or other purposes.

*David Jordan*

Laboratory Analyst Signature

7/19/2017

Date