

PI Subcommittee Meeting

May 7, 2014 – 10am EST to 11am EST

NOTES

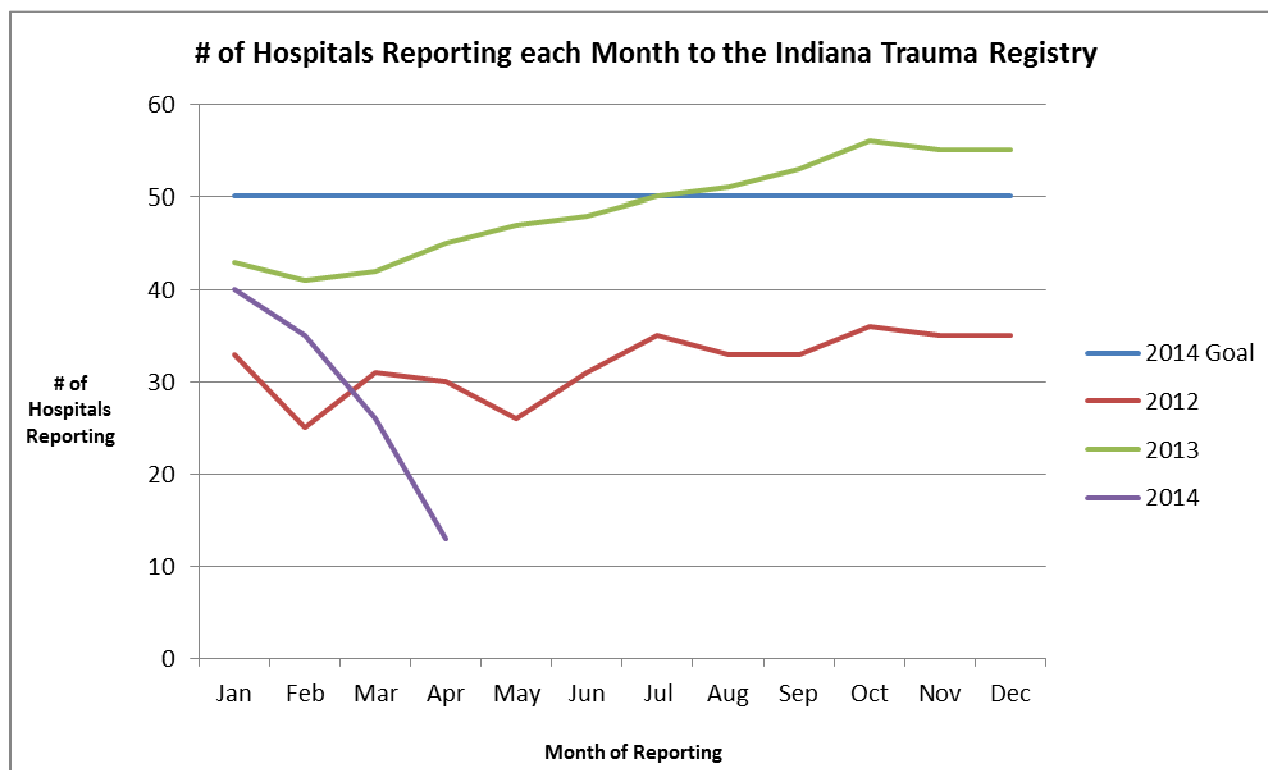
1. Welcome & Introduction
 - a. *ISDH: Katie Gatz, Jessica Skiba, Camry Hess (ISDH), Tracy Spitzer (IU Health – Methodist)*
 - b. *Phone:*
 - i. *Deaconess: Michele Jolly*
 - ii. *Elkhart General: Amy Deel*
 - iii. *Eskenazi Health: Chuck Stein & Kris Hess*
 - iv. *IU Health – Arnett: Amanda Rardon*
 - v. *IU Health – Bloomington: Lindsey Williams & Lesley Lopossa*
 - vi. *IU Health – Methodist: Dr. Reed & Cindy Loop*
 - vii. *IU Health – Riley: Jodi Hackworth & Dawn Daniels*
 - viii. *Lutheran: Annette Chard & Lisa Smith*
 - ix. *Memorial Hospital of South Bend: Paula Kresca*
 - x. *Methodist Northlake & Southlake: Jen Mullen & Latasha Taylor*
 - xi. *St. Vincent – Indy: Chris Wagoner*
 - xii. *Union Hospital (Terre Haute): Kelly Mills*
2. Update of goals for 2014 (see additional pages for updates of each goal)
 - a. Increase the number of hospitals reporting to the Indiana trauma registry
 - i. Trauma Registry Rule update – increased communication with hospitals
 - ii. Information on trauma registry training events
 1. *ISDH shared information about the upcoming training events that will be hosted at ISDH. The next training is scheduled for Friday, May 16th.*
 - iii. Trauma Center mentor program
 1. *ISDH asked the group to review the mentor status of each trauma center and asked for updates.*
 2. *Updates: Deaconess has completed the Deaconess Gateway mentorship.*
 - iv. Discussion of specific hospitals:
 1. Hospitals that have not responded to ISDH communication over the last 2 years.
 - a. *District 1: St. Catherine Hospital*
 - b. *District 3: St. Joseph Hospital (Fort Wayne)*
 - i. *Annette Chard from Lutheran will follow-up*
 - c. *District 5: Community Westview Hospital, Hancock Regional Hospital, IU Health – Saxony, St. Vincent – Fishers, IU Health – IU*
 - i. *IU Health – IU is closing ED on June 1st. ISDH will remove from the list and registry.*
 - d. *Fayette Regional Health System & St. Vincent – Mercy*
 - i. *St. Vincent – Indianapolis will follow-up with St. Vincent – Mercy*
 - e. *District 9: Decatur County Memorial Hospital, Harrison County Hospital, and Kentuckiana Medical Center*

- f. *Situation does not apply to District 2, District 4, District 7, District 8, or District 10*
 - 2. Hospitals that have attended training events, but have not started reporting data
 - a. *District 1: St. Anthony Health – Michigan City, St. Mary Medical Center – Hobart*
 - b. *District 2: Woodlawn Hospital*
 - i. *Where did they attend the training event?*
 - 1. *Indianapolis (2/21), Fort Wayne (3/25), South Bend (3/26)*
 - c. *District 3: Adams Memorial Hospital, DeKalb Health, Wabash County Hospital*
 - d. *District 4: Memorial Hospital Logansport*
 - i. *IU Health Arnett is mentoring*
 - e. *District 5: IU Health – Morgan,*
 - f. *District 6: IU Health – Blackford, Jay County Hospital, St. Joseph Hospital & Health Care (Kokomo)*
 - g. *Situation does not apply to District 7, District 8, District 9, District 10*
- b. Decrease average ED LOS at non-trauma centers
 - i. Review of transfer data sent to trauma centers (& some other facilities receiving transfer patients)
 - 1. *This time ISDH only sent the hospitals the probabilistically matched linked cases versus all of the cases that were said to have been transferred to the final hospital*
 - a. *ISDH will go back to sending all cases next quarter*
 - ii. Review of current average ED LOS
 - 1. Katie talked about the average ED LOS for patients transferred out (timeframe: January 1, 2013 to April 30, 2014).
 - 2. *Dr. Reed asked if we could show the range and confidence intervals so we can see how consistent hospitals are in timely transfers*
 - a. *ISDH will add next quarter*
 - 3. *Kelly Mills from Union Hospital in Terre Haute said that the data available from the state is making a big difference at their institution*
 - 4. *Michele Jolly from Deaconess said that their facility reviews a variety of issues regarding transfer cases and that they target their RTTDC to those facilities (not just focused on ED LOS)*
 - 5. *Annette Chard from Lutheran says that they are looking at ED LOS issues at the initial facilities to target the RTTDC they offer*
 - iii. Discussion of educational materials for non-trauma centers regarding timely transfers
 - 1. Other States Requiring PI for ED LOS > 2 hours (19 states surveyed – 9 states have > 2 hours as of November 2013):
 - a. Arizona – in PI Guidelines
 - b. Illinois – in State Rule
 - c. Nebraska – in PI Guidelines
 - d. New Mexico
 - e. North Dakota
 - f. South Dakota
 - g. Texas – in State Rule
 - h. Virginia
 - i. Wyoming
 - 2. Other States Requiring PI For ED LOS:

- a. Minnesota: ED LOS > 1 hour
 - b. Pennsylvania: ED LOS > 3 hours
 - i. *Katie highlighted this information and will follow-up with states requiring PI for ED LOS > 2 hours to see how they educate hospitals in their state*
 - iv. *Schedule an organized meeting with RTTDC coordinators*
 - c. Increase EMS run sheet collection
 - i. Review of EMS run sheet collection by hospital
 - 1. *Katie received feedback regarding the “% of Run Sheets Collected (Inter-Facility Transfers)” – this needs to be broken out into two categories: #1 Run Sheet from the Scene (vitals), #2 Run Sheet for the transfer (times)*
 - a. *This will be added next quarter*
 - 2. *Amanda from IU Health – Arnett asked if EMS providers are submitting their run data to ISDH, does that meet the requirement to leave a run sheet at the hospital within 24 hours?*
 - a. *ISDH will follow-up with IDHS*
3. Next Meeting (TENTATIVE): Tuesday, July 29th at 10am EST

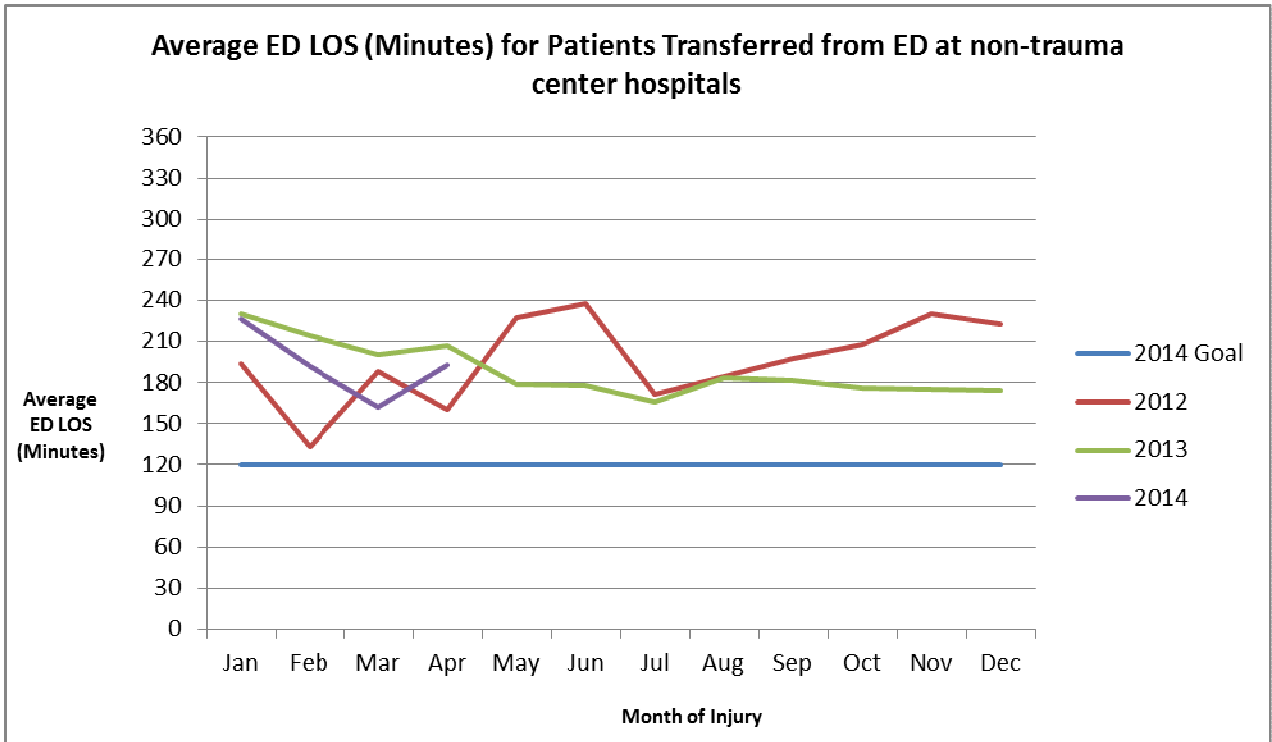
Call-in number: 1-877-422-1931, participant code is 2792437448# (music will be heard until the moderator joins the call)

Action Item	Owner	Due Date
Inform St. Joseph Hospital (Fort Wayne) of requirement to report	Annette Chard – Lutheran Hospital	July 29 th , 2014
Remove IU Health – IU from trauma registry and list of entities that need to report	ISDH	July 29 th , 2014
Inform St. Vincent Mercy of requirement to report	Judi Holsinger – St. Vincent Indianapolis	Completed
Mentor Memorial Hospital of Logansport	Amanda Rardon - IU Health - Arnett	May 7 th , 2015
Send all transfer cases (linked and unlinked) to final hospital	ISDH	July 28 th , 2014
Average ED LOS for transfers – add range and confidence internals	ISDH	July 28 th , 2014
Follow-up with states requiring PI for ED LOS > 2 hours to see how they educate hospitals in their state	ISDH	July 28 th , 2014
Schedule a meeting with RTTDC Coordinators from around the state	ISDH	July 28 th , 2014
Break out% of Run Sheets Collected (Inter-Facility Transfers) into two categories: 1 – Run Sheet from Scene 2 – Run Sheet for the transfer	ISDH	July 28 th , 2014
If EMS providers are submitting their run data to the ISDH EMS Registry, do they still have to meet the requirement of leaving the run sheet at the hospital within the first 24 hours?	ISDH	July 28 th , 2014



Action	Owner	Status
Letter from Dr. VanNess to non-reporting hospitals	ISDH	Complete 02/2013
2nd Letter from Dr. VanNess to non-reporting hospitals about trauma registry rule	ISDH	Complete 12/2013
Trauma registry training events around the state	ISDH	Complete 3/2014
Mentorship Program between trauma centers and non-reporting hospitals	trauma centers	In progress
IU Health - North mentorship	IU Health - Methodist	Completed 2013
St. Vincent Anderson mentorship	St. Vincent - Indy	Completed 2013
Perry County, St. Mary's – Warrick, & Terre Haute Regional mentorship	St. Mary's	Completed 2013
Deaconess Gateway mentorship	Deaconess	Completed 2014
Elkhart General, IU Health - LaPorte, & IU Health - Starke mentorship	Memorial South Bend	In progress
Waiting on mentorship status	IU Health - Methodist	
Waiting on mentorship status	St. Vincent - Indy	
Waiting on mentorship status	St. Mary's	
Waiting on mentorship status	IU Health - Riley	

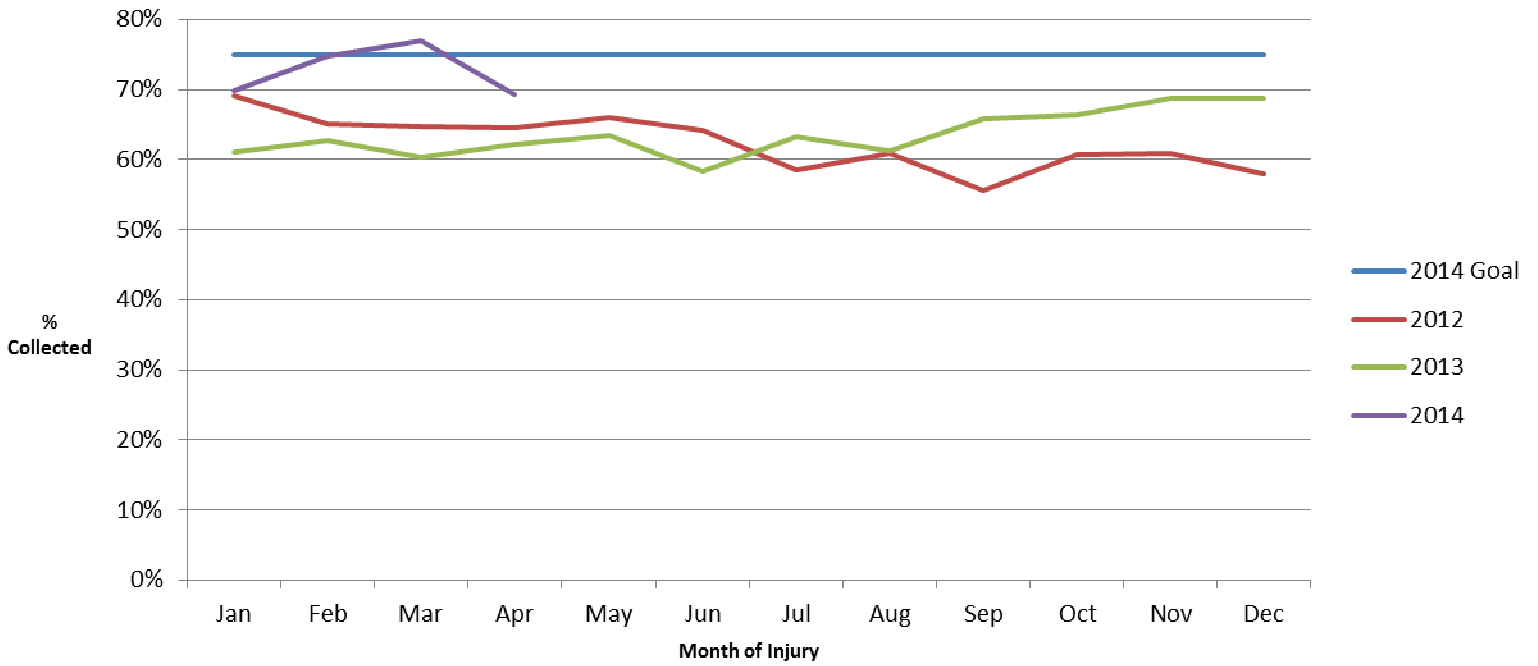
Waiting on mentorship status	Lutheran	
Waiting on mentorship status	Parkview RMC	
Waiting on mentorship status	Eskenazi Health	
Waiting on mentorship status	Deaconess	



Action	Owner	Status
RTTDC completion by non-trauma center hospitals	Trauma Centers	ongoing
Evaluate critical patients (transfers & non-transfers)	ISDH & trauma centers	ongoing
Develop educational material for non-trauma centers regarding timely transfers	ISDH & trauma centers	Not started

January 1, 2013 to April 30, 2014		
Total # of Patients Transferred for 2013	3146	
Measure	# of Patients	Avg ED LOS (Minutes)
Initial Hospital: Shock Index > 0.9	513	107
Initial Hospital: GCS Total Score ≤ 12	83	120
Initial Hospital: ISS ≤ 15	2623	189
Initial Hospital: ISS > 15	268	158

% of EMS Run Sheet Data Collected



Action	Owner	Status
implementation of ISDH EMS Registry	ISDH	ongoing
trauma registry rule	ISDH	in progress
EMS registry training tour	ISDH	complete
trauma centers communicating to pre-hospital providers ISDH ems registry	trauma centers	

Run Sheet Collection January 1 2013 to April 30 2014

Facility Name	% of Run Sheets Collected	% of Run Sheets Collected (Inter-Facility Transfers)
Cameron Memorial	100%	
Clark Memorial	0%	
Community Hospital of Anderson	1%	
Community Hospital of Bremen	0%	
Community Howard	0%	
Community North	0%	
Daviess Community	96%	
Deaconess Gateway	86%	100%
Deaconess	87%	21%
Dukes Memorial	100%	
Dupont	0%	
Elkhart General	82%	33%
Eskenazi	95%	15%
St. Anthony - Crown Point	94%	
St. Anthony - Michigan City	0%	
St. Elizabeth - Central	100%	100%
St. Elizabeth - East	57%	47%
St. Francis - Indy	38%	
St. Francis - Mooresville	45%	
St. Margaret - Dyer	70%	
St. Margaret - Hammond	100%	
Good Samaritan	43%	0%
Greene County General	64%	
Hendricks Regional	0%	0%
Henry County Memorial	19%	
IU Health - Arnett	63%	8%
IU Health - Ball Memorial	90%	48%
IU Health - Bedford	82%	
IU Health - Bloomington	88%	43%
IU Health - Goshen	0%	
IU Health - Methodist	90%	22%
IU Health - North	49%	
IU Health - Riley	87%	9%
IU Health - Tipton	0%	
IU Health - White Memorial	0%	
Johnson Memorial	84%	

Kosciusko Community	73%	
Lutheran	96%	53%
Major	94%	
Marion General	76%	
Memorial HHCC (Jasper)	24%	100%
Memorial South Bend	95%	63%
Methodist Northlake	79%	
Methodist Southlake	69%	78%
Monroe	20%	
Parkview Huntington	100%	
Parkview LaGrange	98%	
Parkview Noble	100%	
Parkview Randallia	100%	
Parkview RMC	97%	58%
Parkview Whitley	98%	
Perry County Memorial	22%	
Porter (Valpo)	97%	
Pulaski	67%	
Putnam County	0%	
Reid HHCS	0%	
Rush Memorial	33%	
St. Catherine (Charlestown)	0%	
St. Joseph (Mishawaka)	100%	
St. Joseph (Plymouth)	0%	
Schneck	81%	0%
Scott Memorial	0%	
St. Mary's - Evansville	74%	57%
St. Mary's - Warrick	0%	
St. Vincent - Anderson	56%	0%
St. Vincent - Clay	7%	
St. Vincent - Indy	70%	12%
St. Vincent - Williamsport	31%	
Sullivan County	78%	
Terre Haute Regional	88%	50%
Union - Clinton	48%	
Union - Terre Haute	83%	32%
Witham	7%	
Witham - Anson	0%	