



# **Indiana Trauma Care Committee Meeting**

May 10, 2013

# HOSPITALS REPORTING TO THE INDIANA TRAUMA REGISTRY – QUARTER 4

## **District 1**

Methodist Northlake  
Methodist Southlake

## **District 2**

Community Hospital of  
Bremen  
Memorial Hospital South Bend  
Pulaski Memorial Hospital

## **District 3**

**Cameron Memorial**  
Dukes Memorial  
Lutheran  
Parkview Huntington  
Parkview LaGrange  
Parkview Noble  
Parkview Regional Medical  
Center  
Parkview Whitley



# HOSPITALS REPORTING TO THE INDIANA TRAUMA REGISTRY – QUARTER 4

## **District 4**

Franciscan St. Elizabeth –  
Lafayette Central

Franciscan St. Elizabeth –  
Lafayette East

IU Health – Arnett

IU Health – White Memorial

## **District 5**

**St. Francis - Indianapolis**

Hendricks Regional Health

IU Health – Methodist

IU Health – Riley for Children

Johnson Memorial

Major Hospital

St. Vincent - Indianapolis

Wishard Health Services

Witham Health Services

**Witham at Anson**



# HOSPITALS REPORTING TO THE INDIANA TRAUMA REGISTRY – QUARTER 4

## **District 6**

IU Health – Ball Memorial  
Reid Hospital  
St. Vincent Anderson

## **District 7**

Sullivan County Community  
Terre Haute Regional  
Union - Clinton

## **District 8**

IU Health - Bedford  
IU Health – Bloomington  
**Monroe Hospital**

## **District 9**

## **District 10**

Deaconess  
Memorial Hospital & Health  
Care Center  
St. Mary's Medical Center



# HOSPITALS TRAINED ON THE TRAUMA REGISTRY (YTD)

- Cameron Memorial
- Methodist Southlake
- Monroe Hospital
- St. Vincent Anderson
- IU Health – North
- Community Hospital of Anderson & Madison
- Scott Memorial
- Good Samaritan
- Daviess Community
- Bluffton Regional
- IU Health - Tipton



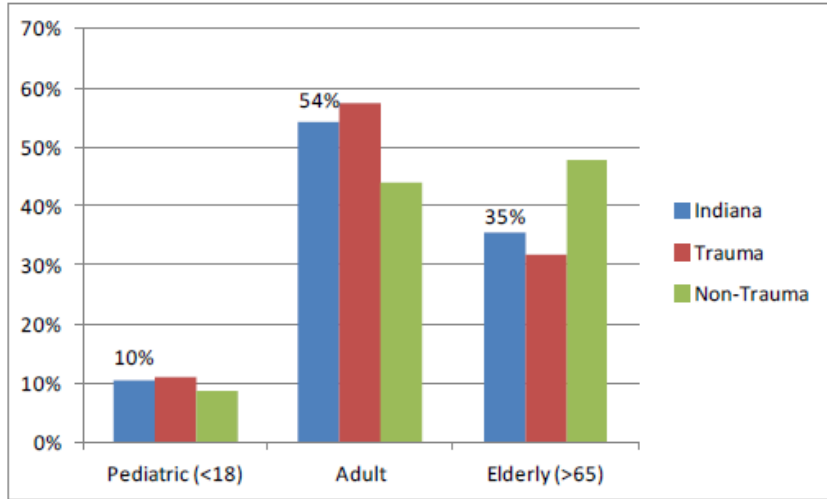
# QUARTER 4 2012 STATEWIDE REPORT

- 5,184 incidents
- October 1, 2012 to December 31, 2012
- 38 total hospitals reporting
  - 8 trauma centers
  - 30 hospitals

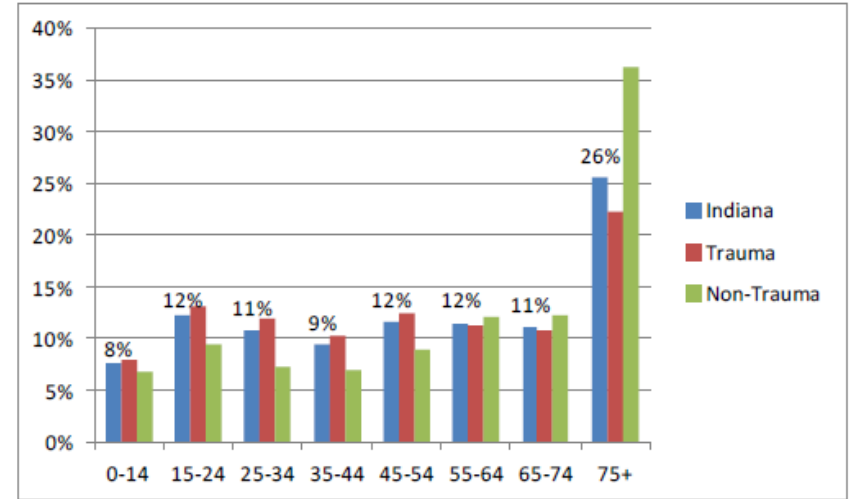


# PATIENT DEMOGRAPHICS

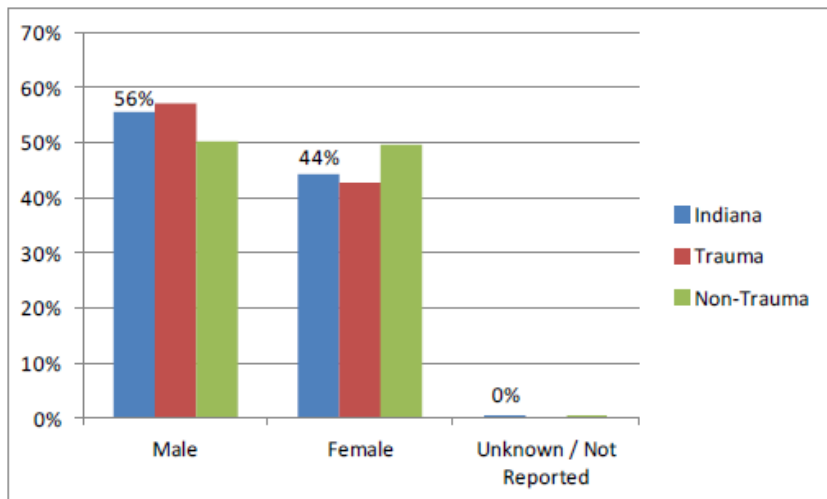
## Patient Age



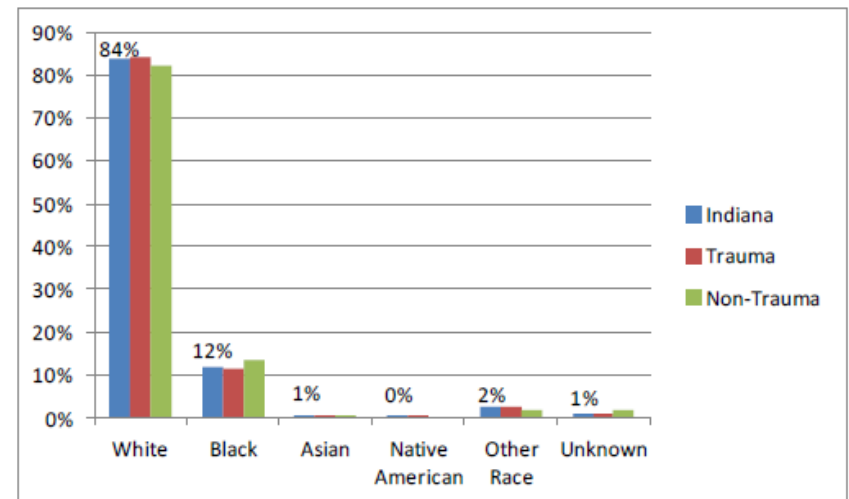
## Patient Age Groupings



## Patient Gender

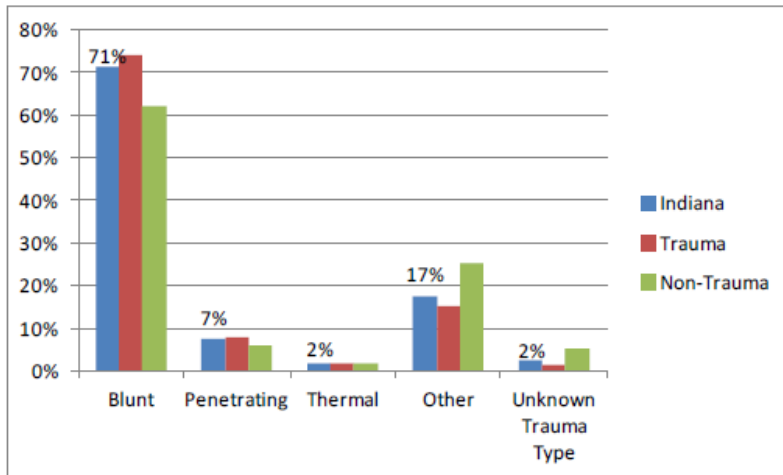


## Patient Race

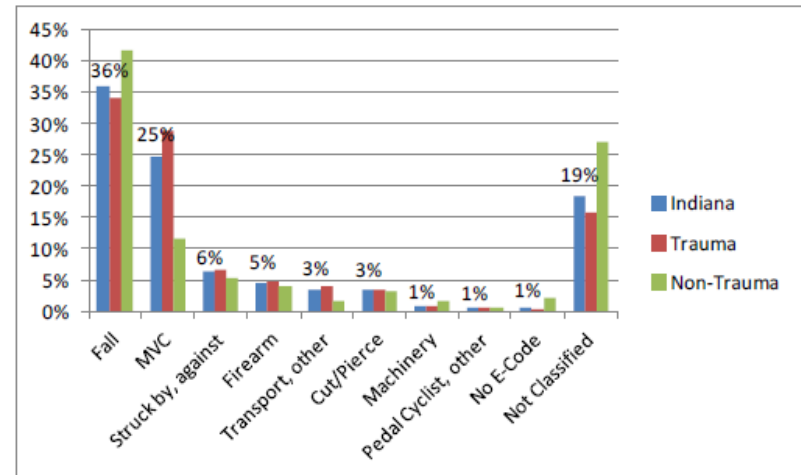


# INJURY

## Trauma Type

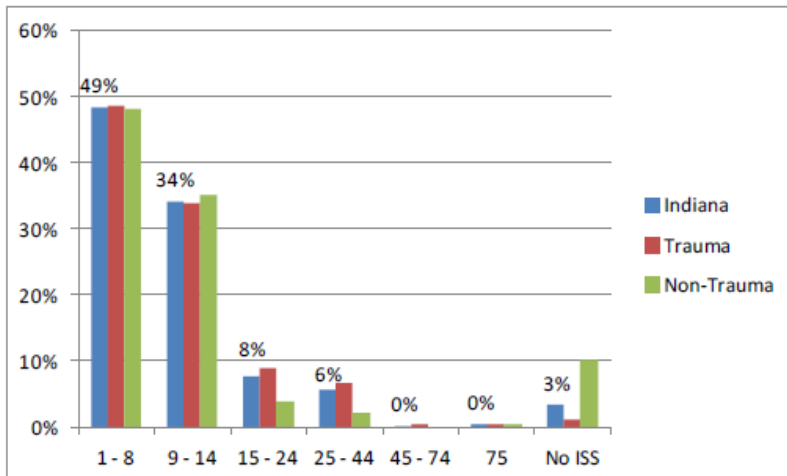


## Cause of Injury

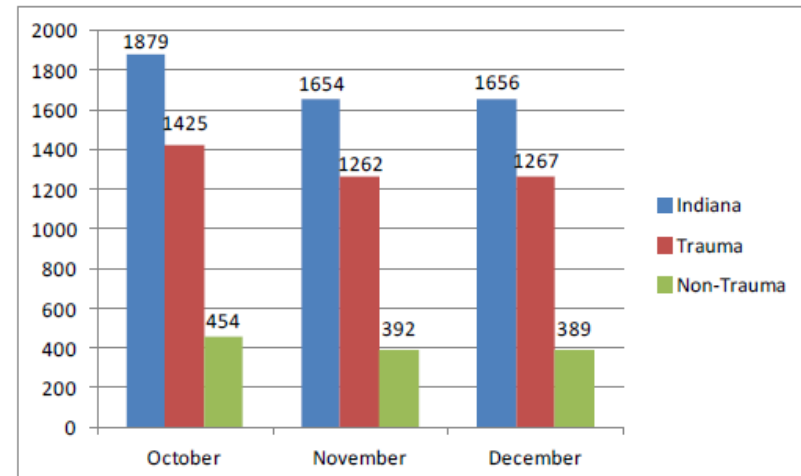


\* <0.5% COI: Fire/Bum, Bites/Stings, Pedestrian (Other), Natural/Environmental, Overexertion

## Injury Severity Score (ISS)



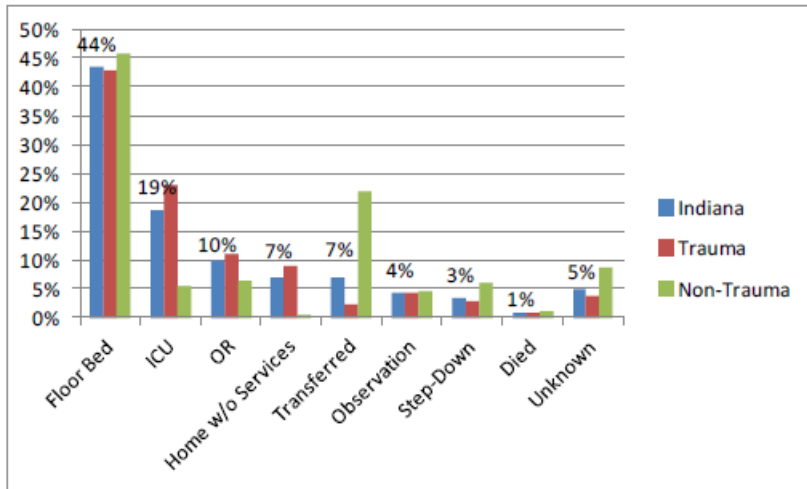
## Month of Injury





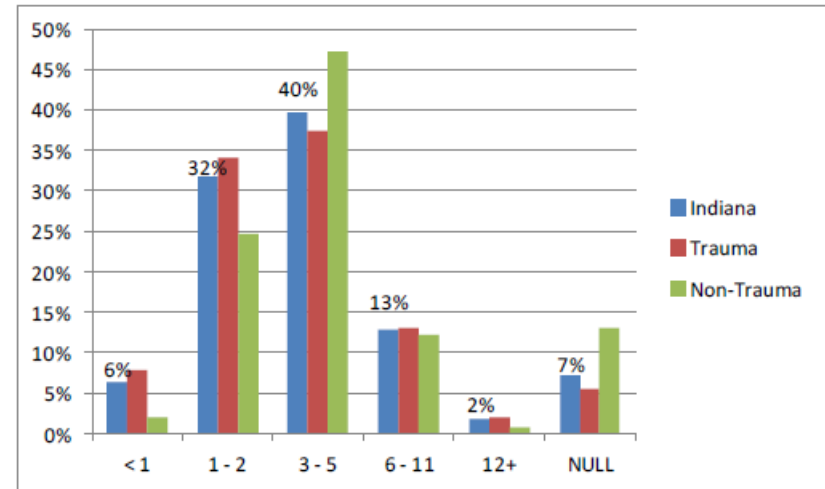
# DISPOSITION / LENGTH OF STAY

## ED Disposition

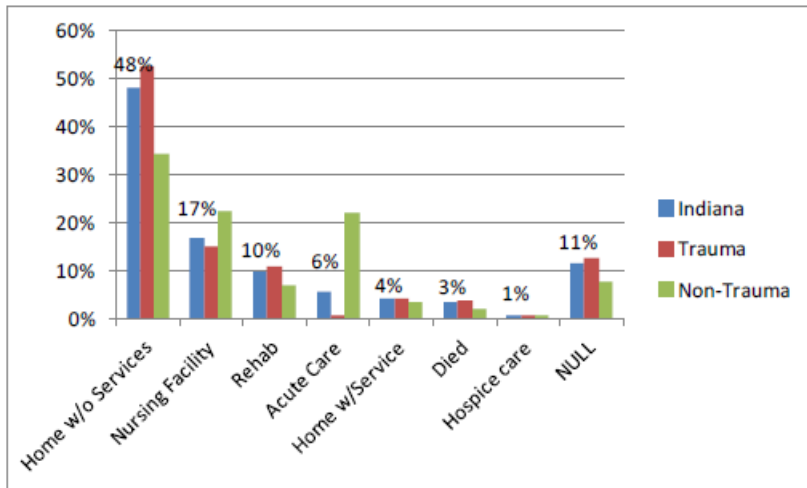


\*<0.5% ED Disposition: AMA, Home with Services, Other

## ED Length of Stay (Hours)

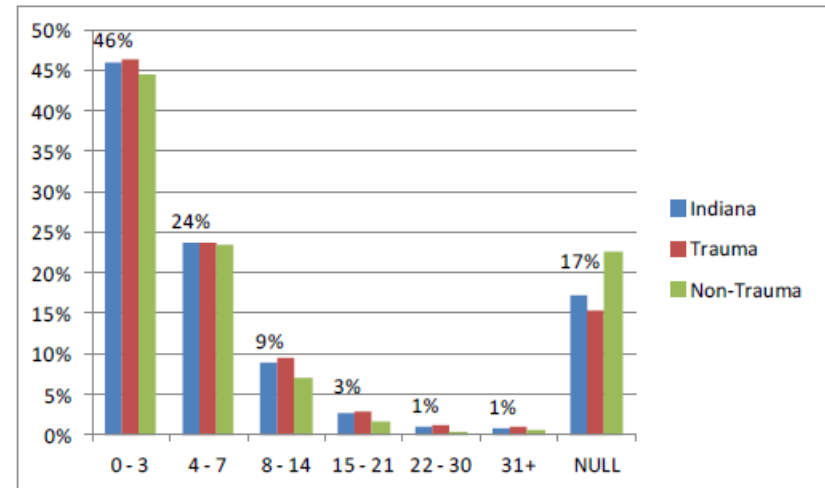


## Hospital Disposition



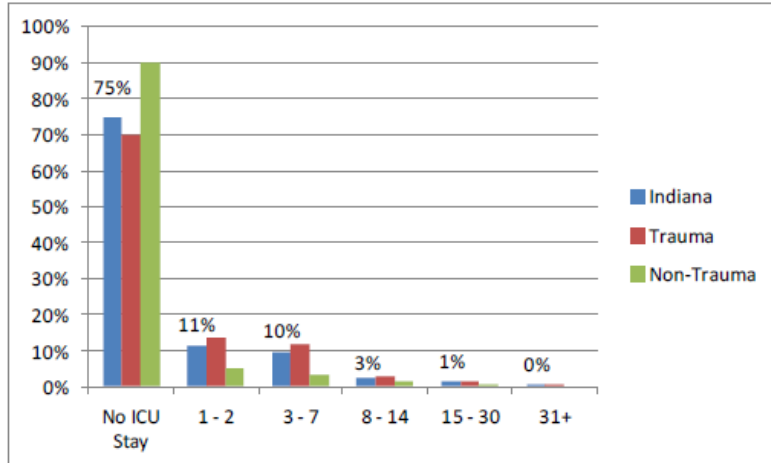
\*<0.5% Hospital Disposition: AMA, Intermediate Care Center

## Hospital Length of Stay (Days)

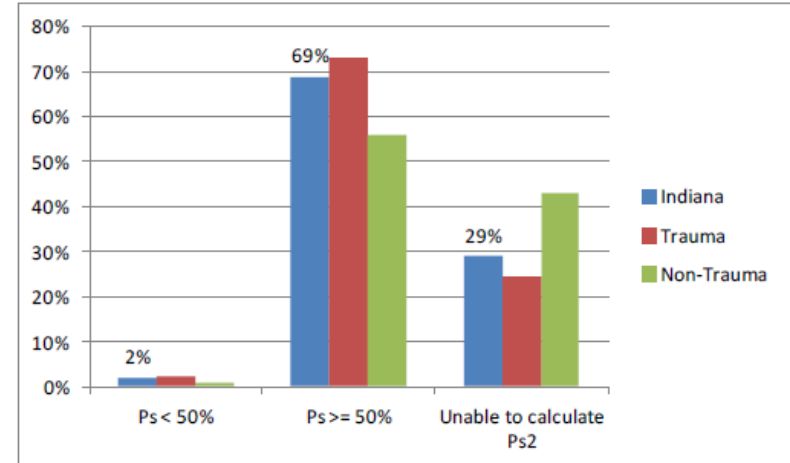


# PATIENT OUTCOMES

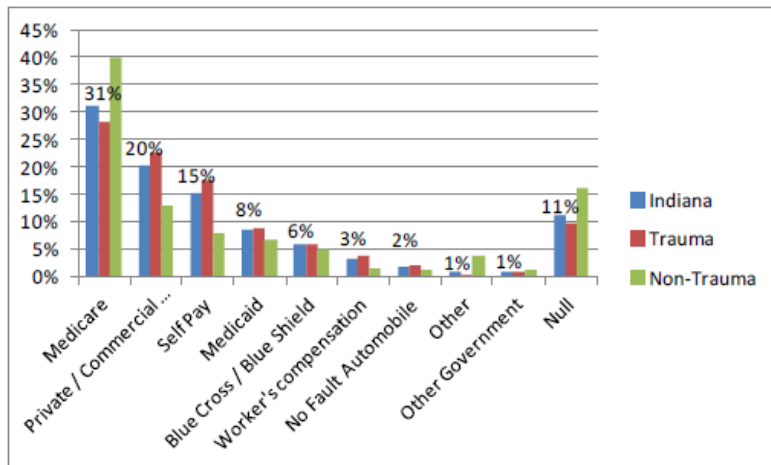
## ICU Length of Stay (Days)



## Probability of Survival ( $P_s$ )



## Primary Payer Mix



W-Score by Region	
Northern Indiana	0.03
Central Indiana	-0.88
Southern Indiana	-0.77
State Average	-0.57

\*Describes the number of unexpected survivors (+ value) or deaths (- value) per 100 patients

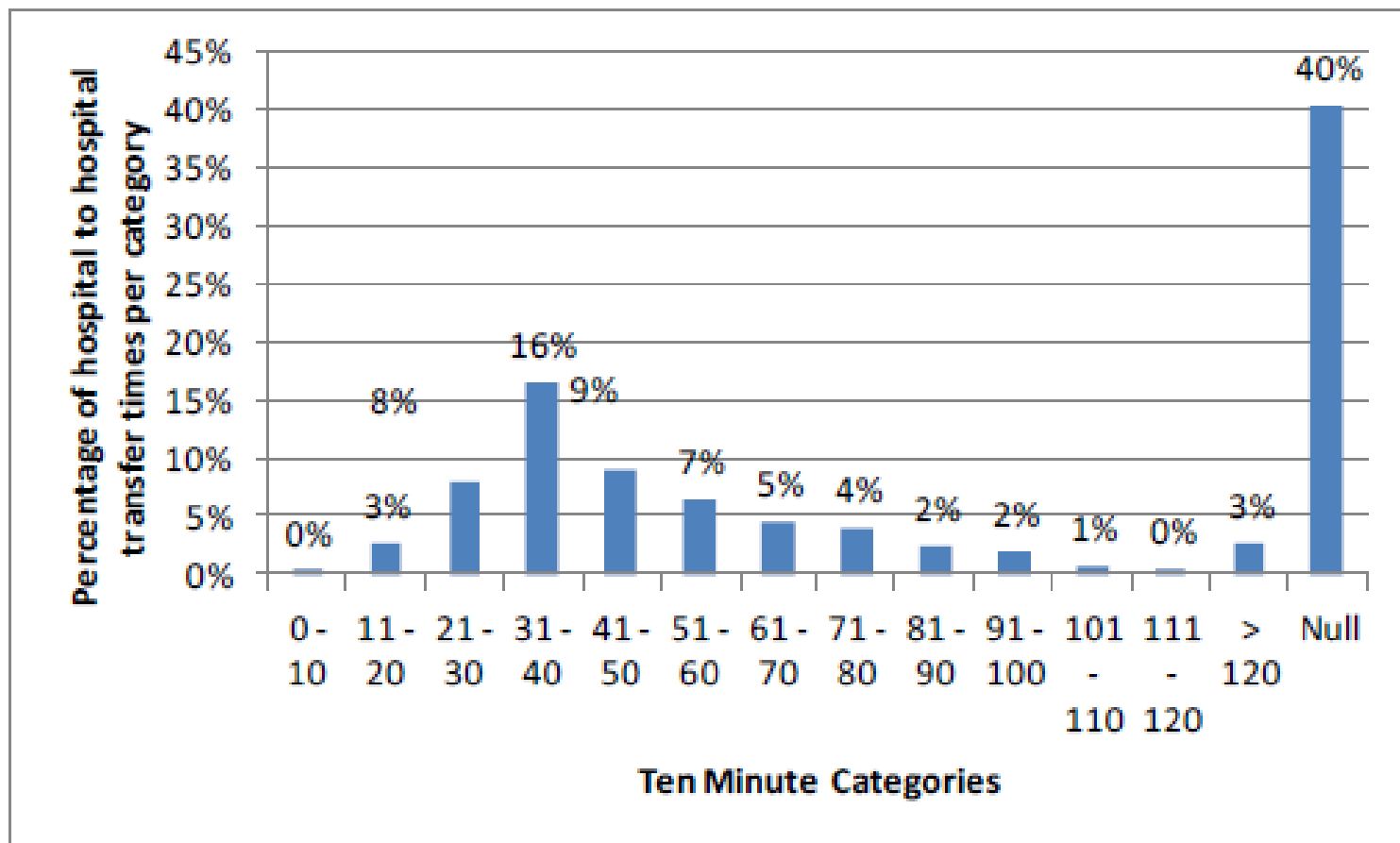
## FOLLOW-UP – NON-TRAUMA CENTERS THAT DO NOT RECEIVE PATIENTS FROM ANOTHER ACUTE CARE FACILITY

- St. Vincent Anderson
- IU Health – White Memorial
- Witham Health Center
- Schneck Medical Center
- Johnson Memorial
- Methodist Northlake
- Community Anderson
- Dukes Memorial
- Daviess Community
- Cameron Memorial
- Henry County
- St. Francis – Indy
- Good Samaritan
- Pulaski Memorial
- Memorial Hospital & Health Care Center
- Community Hospital of Bremen
- Hendricks Regional



# FOLLOW-UP: HOSPITAL TO HOSPITAL TRANSFERS

## Hospital to Hospital Transfers



# FOLLOW-UP: TRANSFER PATIENTS – AVERAGE ED LOS BY PROBABILITY OF SURVIVAL

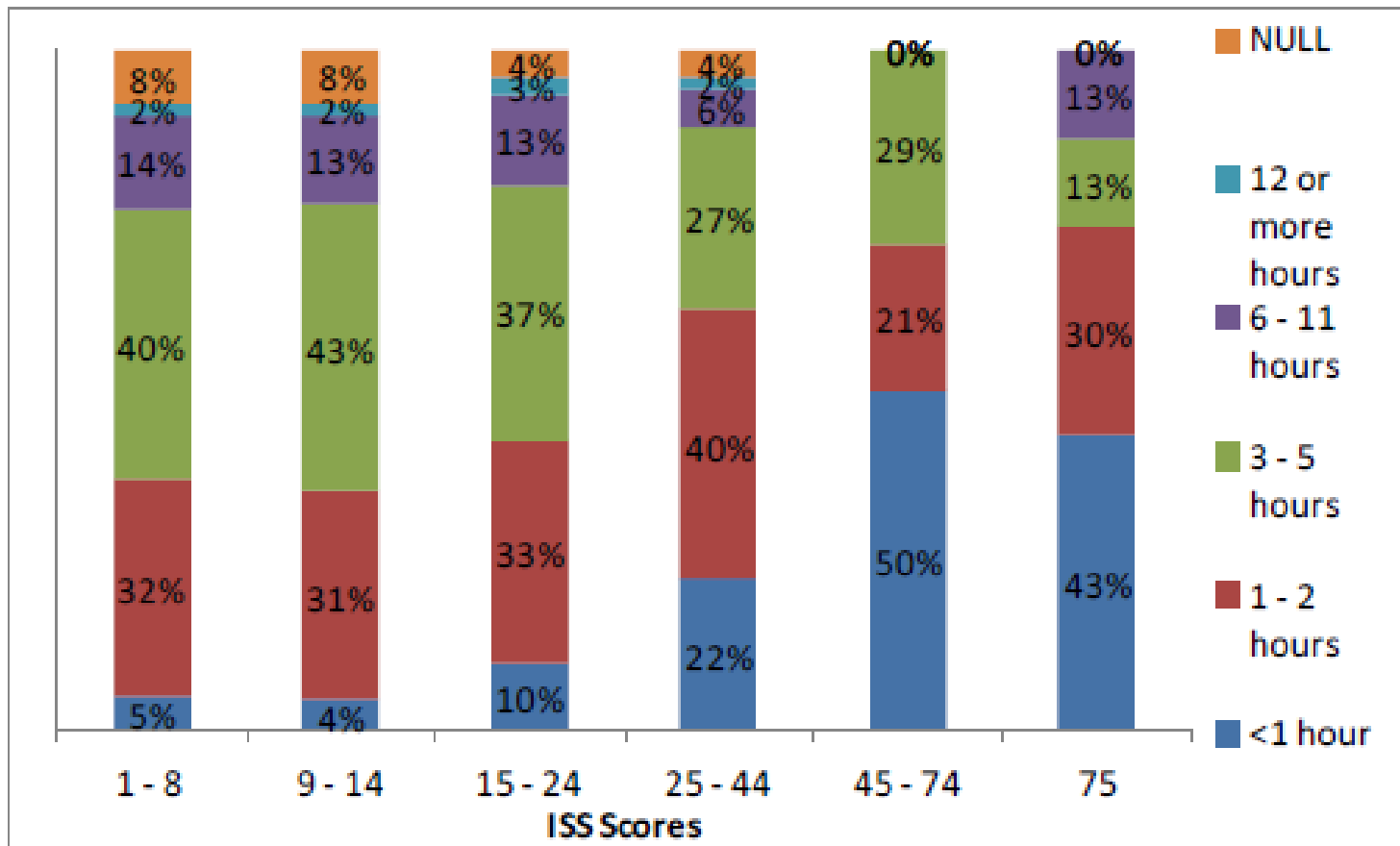
## For Transfer Patients:

Probability of Survival	ED Length of Stay
$P_s < 50\%$ (n=5)	2.0 hours
$P_s \geq 50\%$ (n=204)	3.0 hours
Unable to calculate $P_s$ (n=144)	2.7 hours



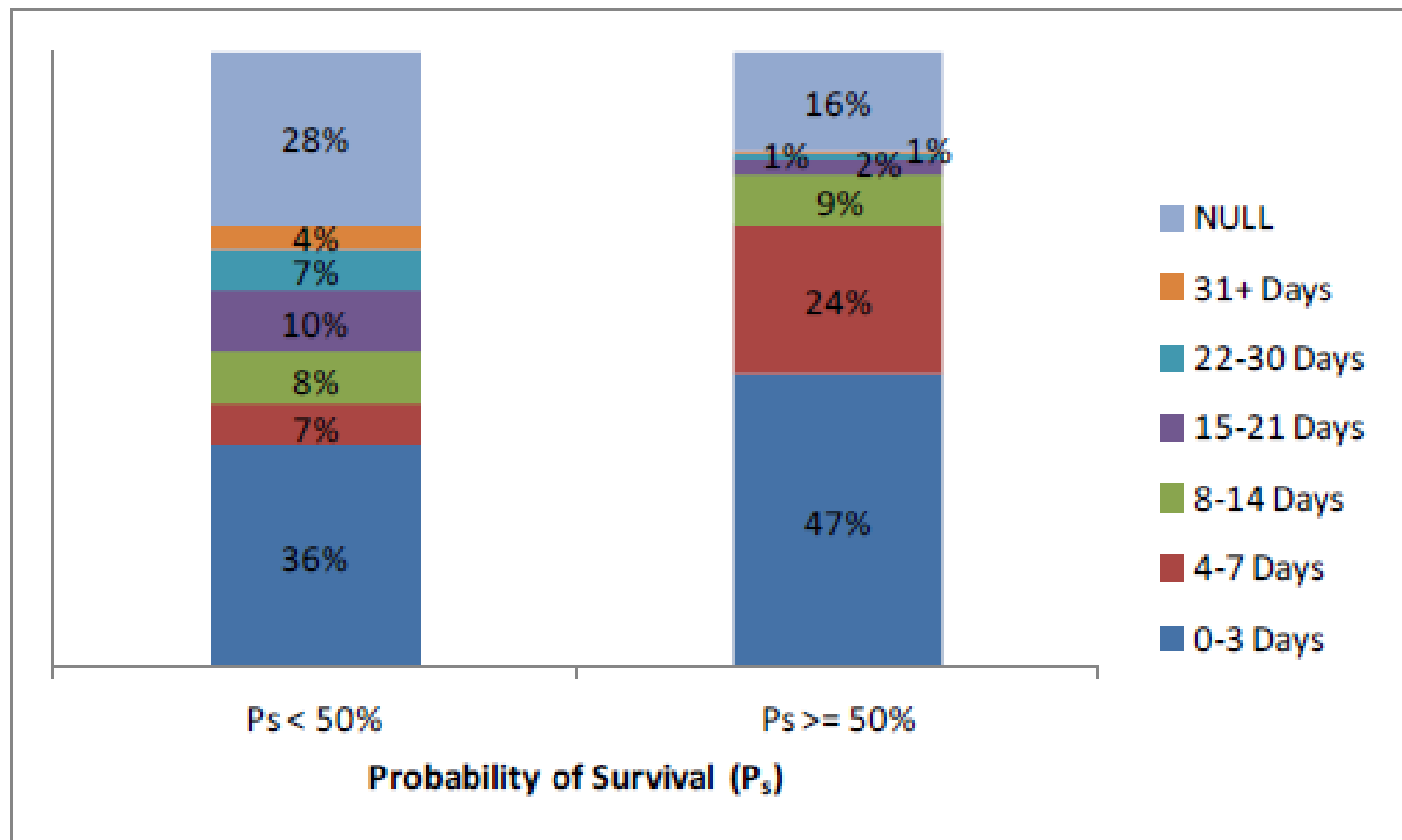
# FOLLOW-UP: ED LOS BY ISS

## ED LOS by ISS



# FOLLOW-UP: HOSPITAL LOS BY PROBABILITY OF SURVIVAL

## Hospital LOS by $P_s$



QUESTIONS?

