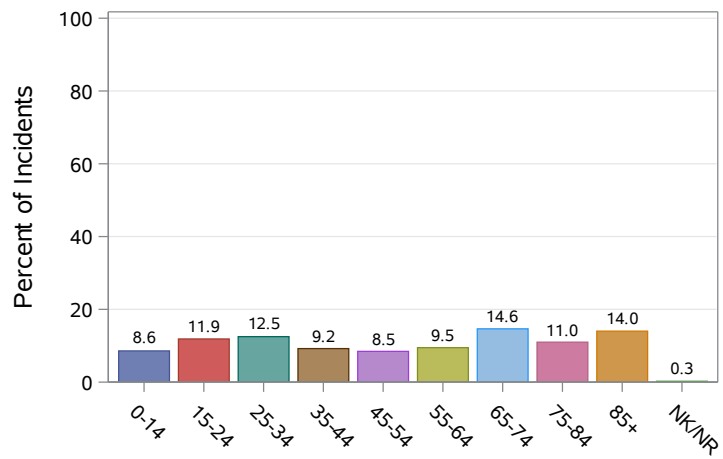


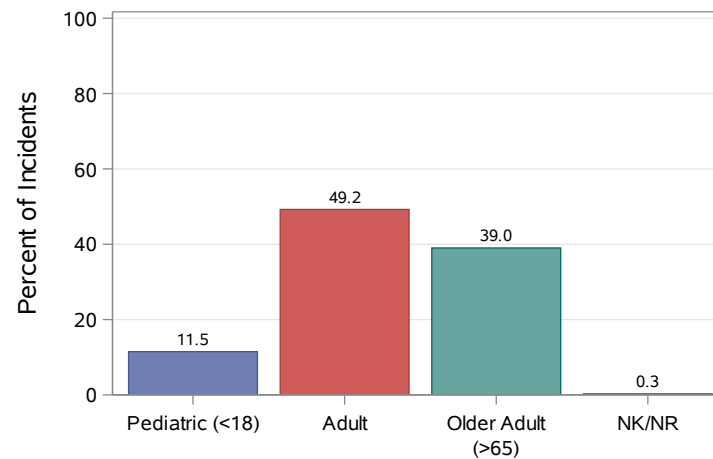
## District 2: Quarter 2 Indiana Trauma Registry Report

Statewide Incidents: 10988 Hospitals Reporting: 111 District 2 Incidents: 792 Hospitals Reporting: 9

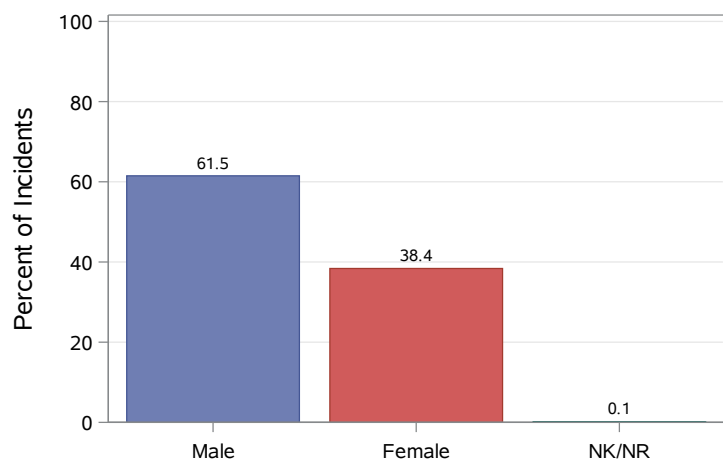
### Patient Age Category



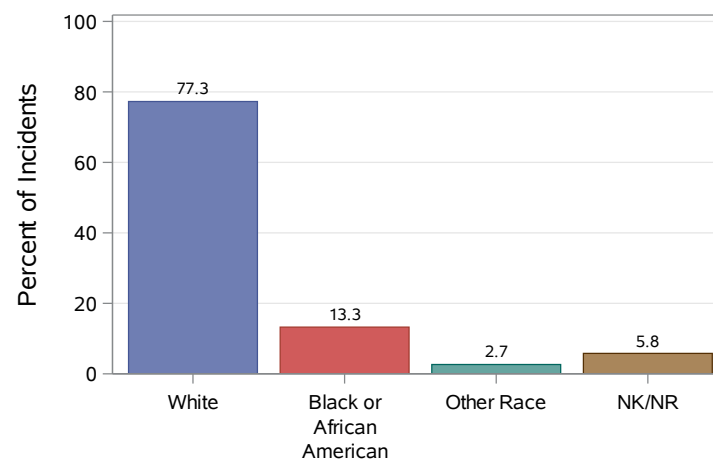
### Patient Age Group



### Patient Gender



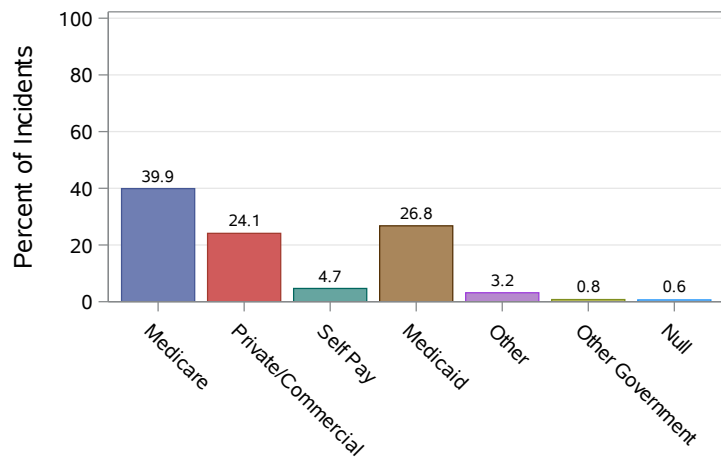
### Patient Race



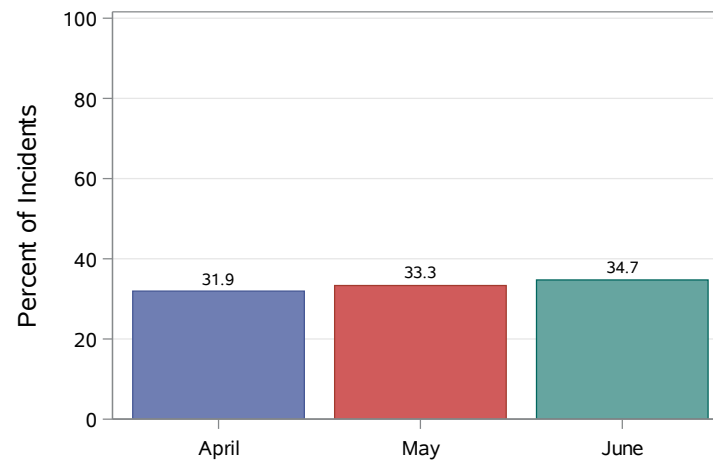
## District 2: Quarter 2 Indiana Trauma Registry Report

Statewide Incidents: 10988 Hospitals Reporting: 111 District 2 Incidents: 792 Hospitals Reporting: 9

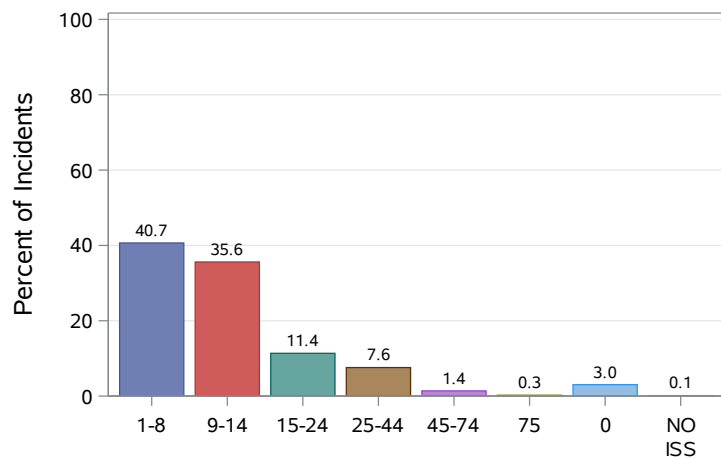
### Primary Payer Mix



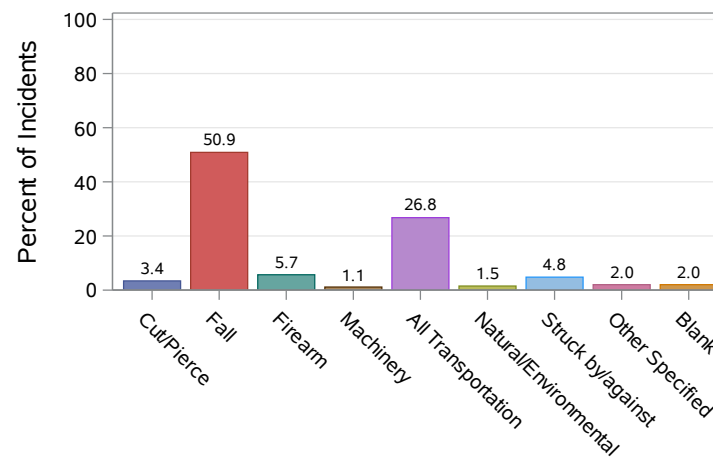
### Month of Admit



### ISS Category



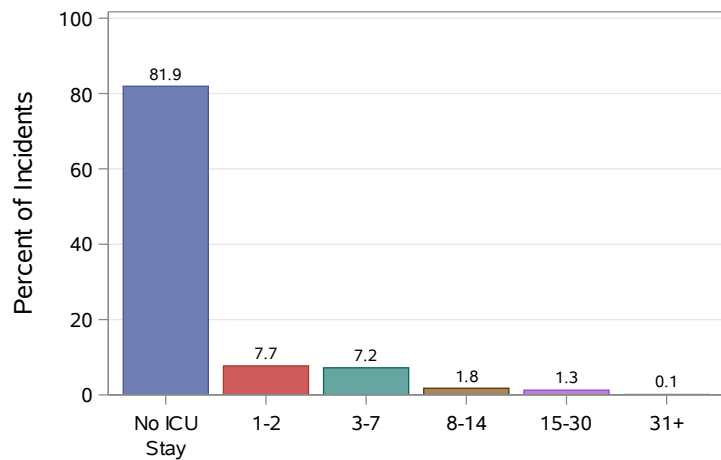
### Cause of Injury



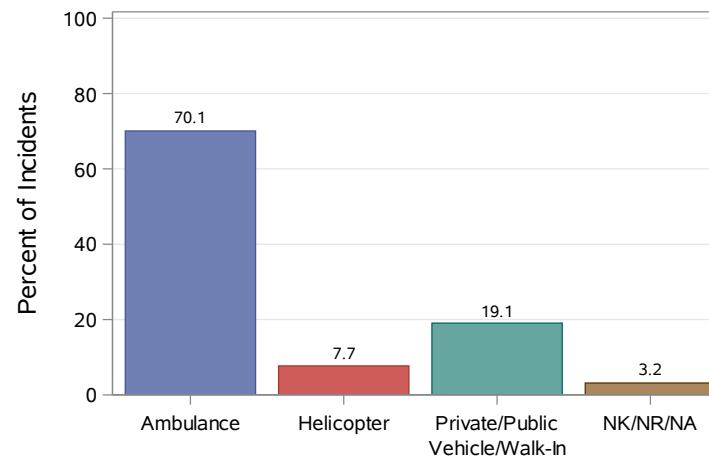
## District 2: Quarter 2 Indiana Trauma Registry Report

Statewide Incidents: 10988 Hospitals Reporting: 111 District 2 Incidents: 792 Hospitals Reporting: 9

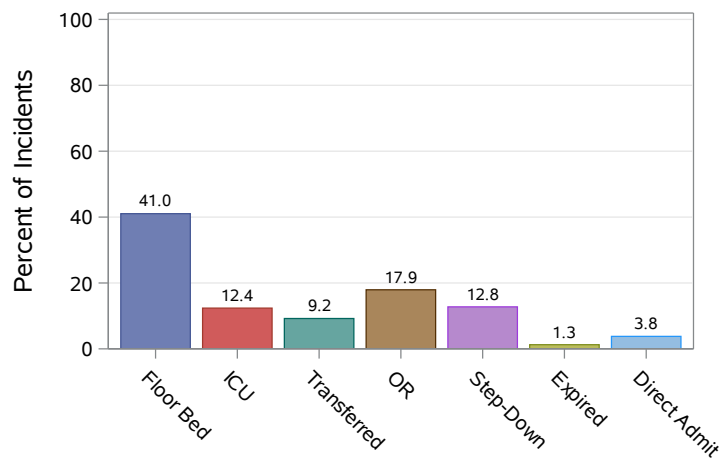
### ICU Length of Stay (Days)



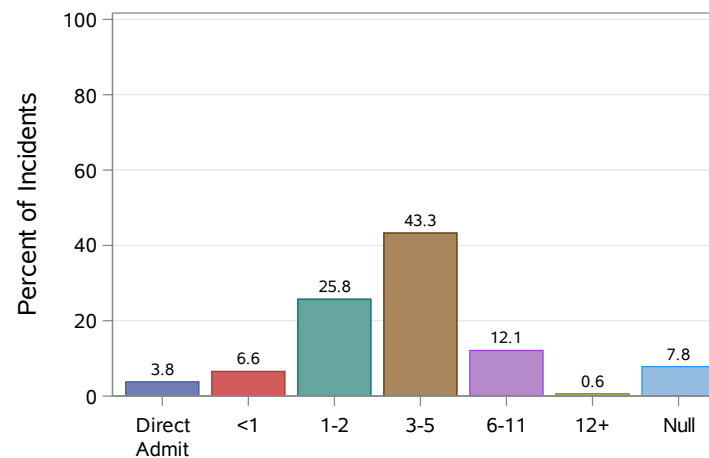
### Transport Mode



### ED Disposition



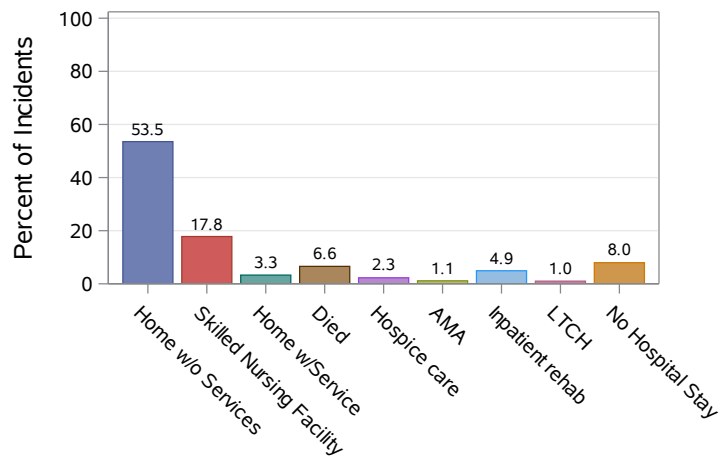
### ED Length of Stay (Hours)



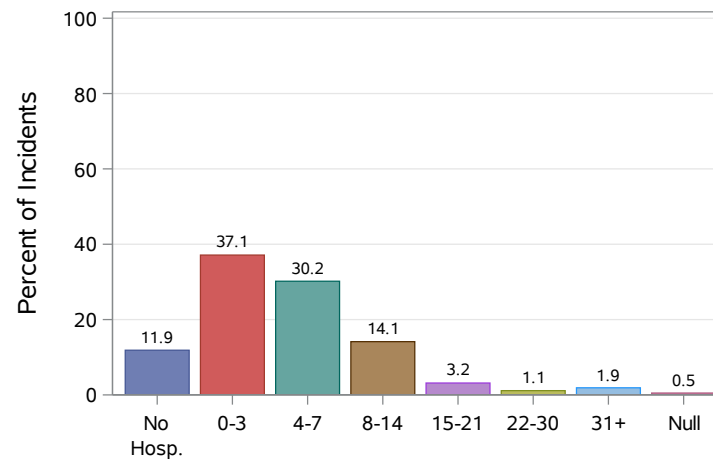
## District 2: Quarter 2 Indiana Trauma Registry Report

Statewide Incidents: 10988 Hospitals Reporting: 111 District 2 Incidents: 792 Hospitals Reporting: 9

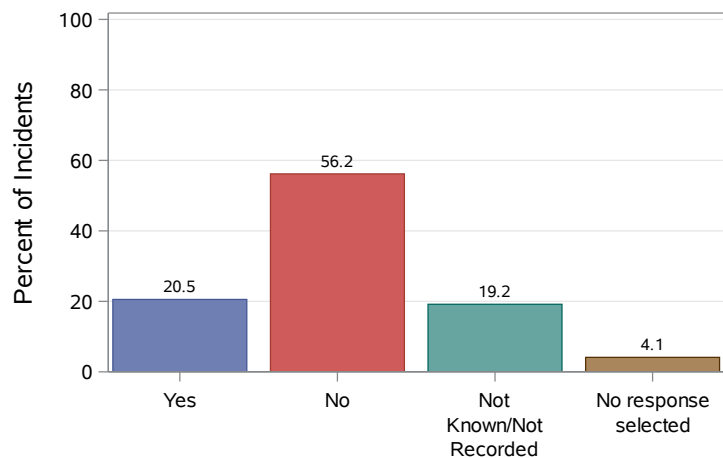
### Hospital Disposition



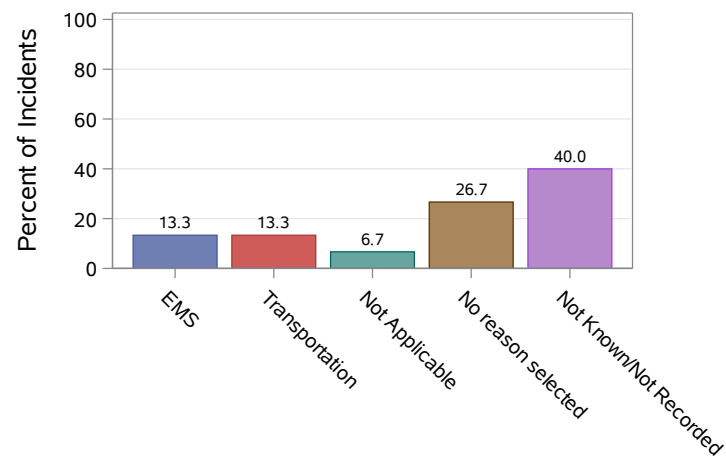
### Hospital Length of Stay (Days)



### Transfer Delay



### Transfer Delay Reason



## District 2: Quarter 2 Indiana Trauma Registry Report

Statewide Incidents: 10988 Hospitals Reporting: 111 District 2 Incidents: 792 Hospitals Reporting: 9

### ED Length of Stay Metrics

#### Overall (Minutes)

Category	Min.	Mean	Max.	N	Std.
District 2	1	234.07	1725	700	143.76
Indiana	0	304.43	2601	10064	253.91
Trauma I & II	0	299.31	2601	4316	264.70
Trauma III	0	304.58	1982	2259	236.07
Non-Trauma Centers	0	283.56	1838	2459	210.10

#### Transfers Only (Minutes)

Category	Min.	Mean	Max.	N	Std.
District 2	30	176.50	387	26	92.88
Indiana	0	239.30	1838	1988	163.84
Trauma I & II	56	209.18	620	44	129.28
Trauma III	25	221.17	1117	488	119.41
Non-Trauma Centers	0	247.70	1838	1292	176.87

#### By ISS Score (Mean Hours)

Category	1-8	9-14	15-24	25-44	45-74	75	NA
District 2	4.29	4.24	2.84	2.45	1.70	4.77	4.83
Indiana	5.12	5.37	4.80	3.73	2.51	1.92	4.70
Trauma I & II	5.12	5.32	4.82	3.27	2.65	1.28	5.04
Trauma III	5.05	5.28	4.44	4.00	1.39	.	5.67
Non-Trauma Centers	4.57	4.98	4.36	4.95	.	4.44	4.66

NA = No ISS Score

#### Critical Pat. Transfers Completed in < 2 Hrs

Category	Critical	Physiological Critical	ISS Critical
District 2	18.46%	66.67%	13.56%
Indiana	36.98%	45.28%	35.22%
Trauma I & II	43.48%	55.56%	47.37%
Trauma III	45.50%	46.24%	50.00%
Non-Trauma Centers	33.43%	44.23%	30.61%