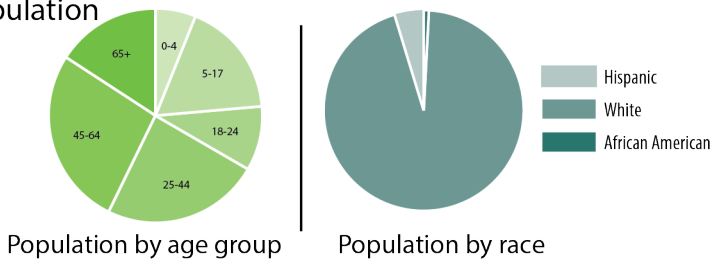


# Montgomery County

Lead Agency  
Franciscan Alliance  
Coordinator: Autumn Clark

Total Population  
38,124

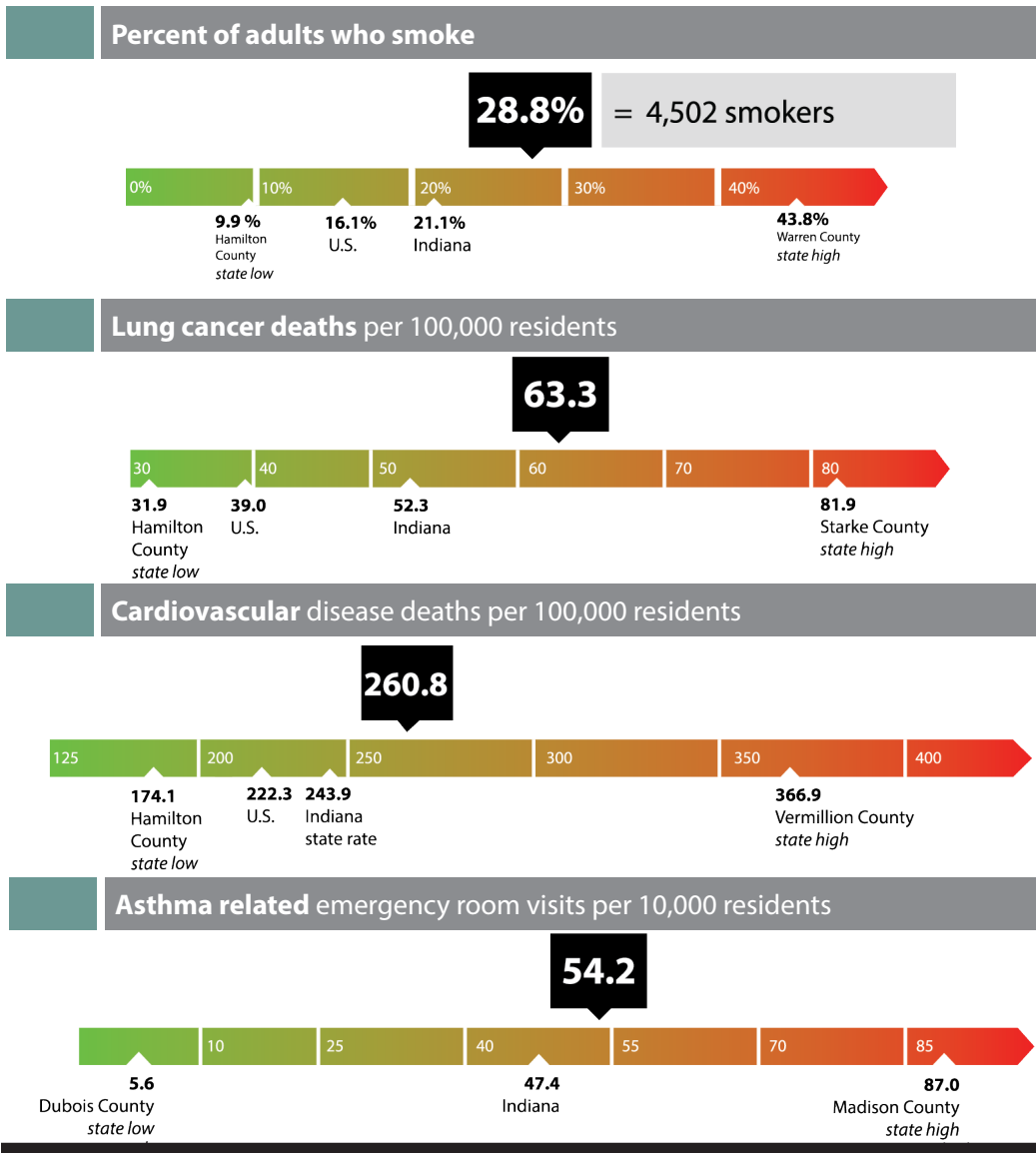


317.779.6049

Autumn.Clark@franciscanalliance.org



## TOBACCO AND HEALTH IN MONTGOMERY COUNTY



### Smoking and pregnancy

**Births affected by smoking** **86**

*low birth weight, SIDS, reduced lung function*

**Cost of smoking related births** **\$116,788**

### Percent of pregnant women who smoke

Indiana ..... **11.5%**  
Montgomery County ..... **17.6%**

### Smoking deaths

**Deaths attributable to smoking**  
**66**

**Deaths due to secondhand smoke**

**8**  
**Economic burden of secondhand smoke: \$12.7 million**

### Smoking related illness

**1,980**

## TOBACCO CONTROL FUNDING

**\$80,000**

Funding in Montgomery County for July 2019- June 2021.

**\$6.1 billion**

Economic cost in Indiana due to smoking.

**\$903 per Indiana household**

State and federal tax burden from smoking-caused government expenditures.

## TOBACCO FREE POLICIES

---

### Hospitals and Health Care Facilities:

- St. Clare Medical Center

### School Districts:

- Crawfordsville Community Schools
- North Montgomery Community School Corporation
- South Montgomery Community School Corporation

## COMMUNITY INDICATORS

---

**Protect and maintain local tobacco control coalition** infrastructure needed to combat tobacco use, as well as working with community organizations to reduce tobacco use among those groups most impacted by tobacco

**Protect Hoosiers from exposures to secondhand smoke by:**

- Implementing tobacco-free campus policies for school districts
- Working toward smoke-free policies in multi-unit housing

**Decrease adult smoking rates by:**

- Promoting the Indiana Tobacco Quitline (1-800-QUIT NOW) throughout the community

**Decrease youth smoking rates by:**

- Supporting community efforts for counter tobacco point-of-sale strategies at the local level