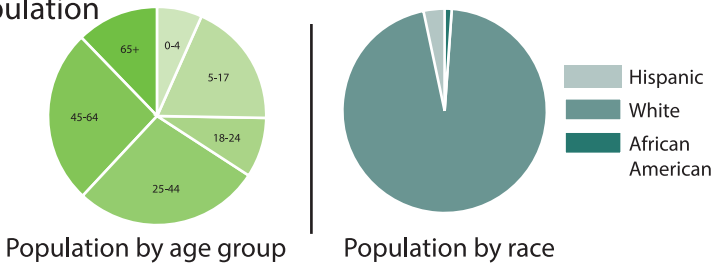


# Johnson County

Lead agency:  
**Johnson Memorial Hospital**  
Coalition Coordinator: Beth Ross

Total Population  
139,654

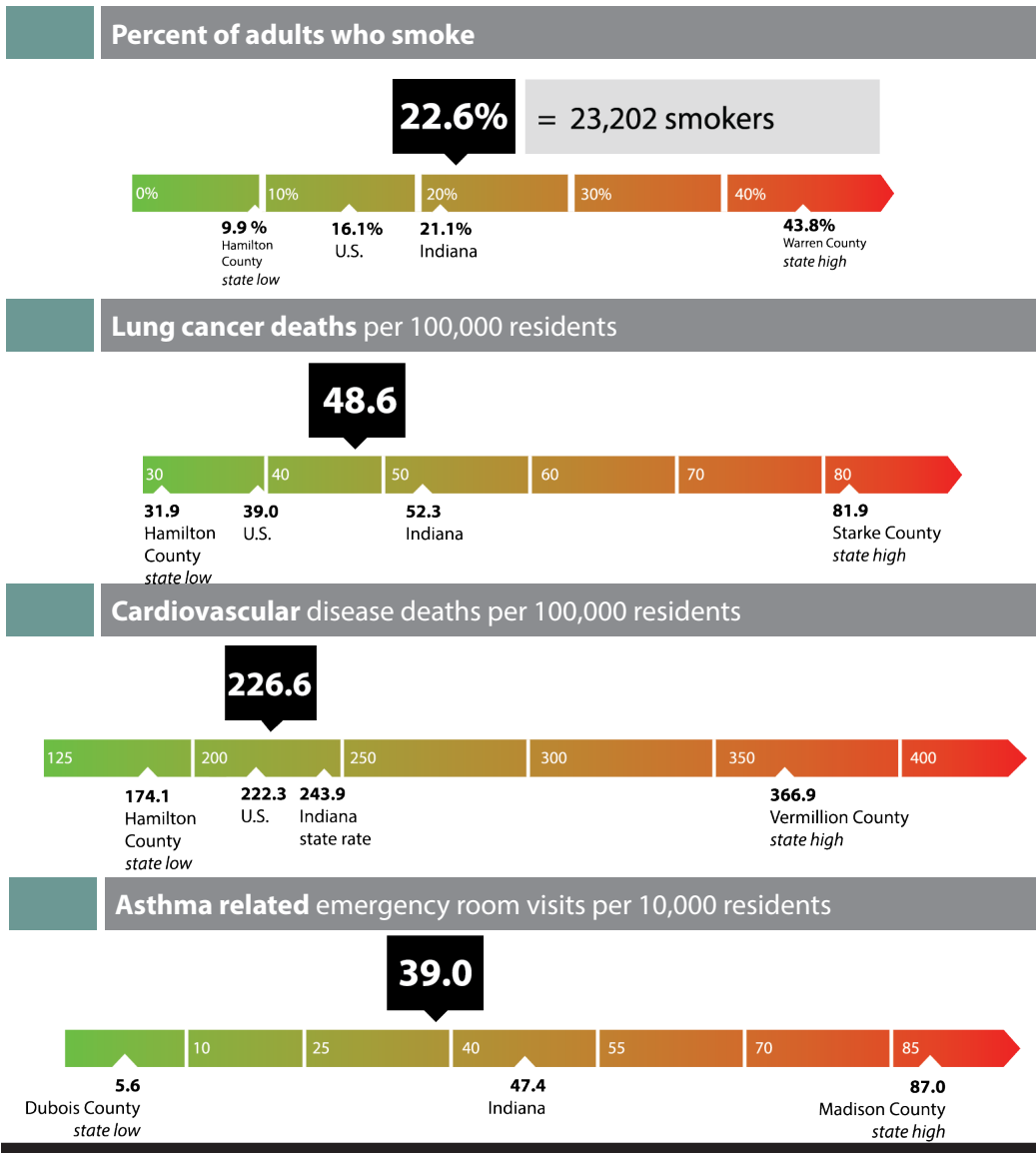


1125 West Jefferson Street  
Franklin, IN 46131  
Ph: (317) 346-3760

[bross@johnsonmemorial.org](mailto:bross@johnsonmemorial.org)



## TOBACCO AND HEALTH IN JOHNSON COUNTY



### Smoking and pregnancy

**Births affected by smoking** 228

*low birth weight, SIDS, reduced lung function*

**Cost of smoking related births** \$309,624

### Percent of pregnant women who smoke

Indiana ..... 11.5%  
Johnson County..... 10.9%

### Smoking deaths

**Deaths attributable to smoking** 234

**Deaths due to secondhand smoke** 29

**Economic burden of secondhand smoke: \$46.6 million**

### Smoking related illness

7,018

## TOBACCO CONTROL FUNDING

**\$120,000**

Funding in Johnson County for July 2019- June 2021.

**\$6.1 billion**

Economic cost in Indiana due to smoking.

**\$903 per Indiana household**

State and federal tax burden from smoking-caused government expenditures.

## TOBACCO FREE POLICIES

### **Smoke free community workplace, restaurant and bar law:**

- City of Franklin

### **Smoke free community workplace and restaurant law:**

- City of Greenwood

### **Hospitals and Health Care Facilities:**

Johnson Memorial Hospital • WindRose Health Network

### **School Districts:**

Clark-Pleasant Community School Corporation • Edinburgh Community School Corporation • Franklin Community School Corporation • Nineveh Hensley-Jackson United • Greenwood Community School Corporation • Center Grove Community School Corporation

### **Colleges and Universities:**

- Franklin College

## COMMUNITY-BASED TOBACCO CONTROL COALITION

- |  |  |   |  |
|--|--|---|--|
| • Greenwood Community School Corporation       | • Tara Treatment Center                  | • Development Corporation                     | • Johnson County REMC                      |
| • Center Grove Community School Corporation    | • Homeview Health & Rehab                | • City of Franklin                            | • Tilson HR                                |
| • Franklin Community School Corporation        | • Abuse Counseling & Education           | • Johnson County Adult & Juvenile Probation   | • Lockhart Automotive Group                |
| • Nineveh-hensley-Jackson School Corporation   | • A New Smile Dental                     | • Johnson County community Corrections        | • Penway, Inc.                             |
| • Franklin, Greenwood Head Start Centers       | • Associates for Women's Health          | • Family Services and Prevention Programs     | • Electro-Spec, Inc.                       |
| • Central Nine Career Center                   | • Center Grove Family Medicine           | • Healthy Families of Johnson County          | • Indiana American Water                   |
| • Franklin College                             | • County Line Medical Pavilion           | • Franklin Chamber of Commerce                | • Zoe Facility Services                    |
| • The Crossing                                 | • Franklin Pediatrics                    | • Greater Greenwood Chamber of Commerce       | • Atterbury Job Corps HR                   |
| • Johnson Memorial Health                      | • Greenwood Gentle Dentist               | • Caterpillar                                 | • Office Pride                             |
| • Community Hospital South                     | • Vision Quest Eyecare                   | • Best Buy JD Petro and Associates, Inc.      | • Indiana Masonic Home                     |
| • Franciscan St. Francis Health - Indianapolis | • St. Thomas Episcopal Church and clinic | • Carpenter Realtors                          | • Boys & Girls Club of Franklin            |
| • Johnson County Health Department             | • Esperanza en Jesucristo Ministries     | • KYB Industries                              | • Girl, Inc.                               |
| • WindRose Health network                      | • Feed Ur Soul Ministries                | • NSK Corporation                             | • Johnson County Schools                   |
| • St. Thomas Clinic                            | • The Lord's Locker                      | • Franklin Insurance Agency                   | • Children's Bureau                        |
| • CMG Family Practice                          | • The Refuge                             | • City of Greenwood                           | • Indiana FFA Foundation                   |
| • Camp Atterbury Health Clinic                 | • Purdue Extension                       | • City of Franklin                            | • Communities That Care                    |
| • American Health Network                      | • Johnson County WIC                     | • Endress + Hauser, Inc.                      | • Johnson County Teen Link                 |
| • Adult and HCild Mental Health, Inc.          | • Johnson County Human Services          | • Mitsubishi Heavy Industries Climate Control | • Reach for Youth                          |
| • Valle Vista Health System                    | • Pleasant Township Trustee              | • Fankling College                            | • Youth Connections                        |
|  | • White River Township Trustee           | • IAHU/FAST                                   | • American Heart Association               |
|  | • Johnson County                         |   | • American Cancer Society                  |
|  |  |   | • Access Johnson County                    |
|  |  |   | • Gateway Services                         |
|  |  |   | • Turning Point Domestic Violence Services |

## COMMUNITY INDICATORS

**Protect and maintain local tobacco control coalition** infrastructure needed to combat tobacco use, as well as working with community organizations to reduce tobacco use among those groups most impacted by tobacco

### **Protect Hoosiers from exposures to secondhand smoke by:**

- Implementing tobacco-free campus policies for hospitals, health care centers, mental health centers and clinics, and addiction treatment centers
- Supporting local and/or statewide smoke-free air ordinances for worksites, including restaurants, bars, and gaming facilities
- Working toward smoke-free policies in multi-unit housing

- Supporting employers to create healthier employees through employer supported tobacco treatment resources to their workforce

### **Decrease adult smoking rates by:**

- Promoting the Indiana Tobacco Quitline (1-800- QUIT NOW) throughout the community
- Working with healthcare providers to ensure they ask, advise, and refer their patients to tobacco cessation resources

### **Decrease youth smoking rates by:**

- Supporting community efforts for counter tobacco point-of-sale strategies at the local level

