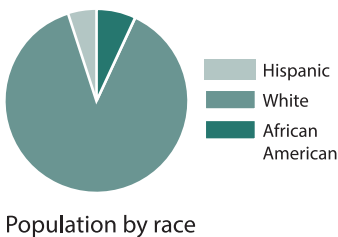
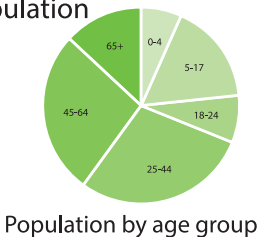


Clark County

Total Population
110,232



Community Partner Lead Agency:
Clark Memorial Health

Minority Partner Lead Agency:
Community Action of Southern Indiana

Coordinator: Annie Reiss

1220 Missouri Avenue
Jeffersonville, IN 47130
Ph: (812) 285-5877

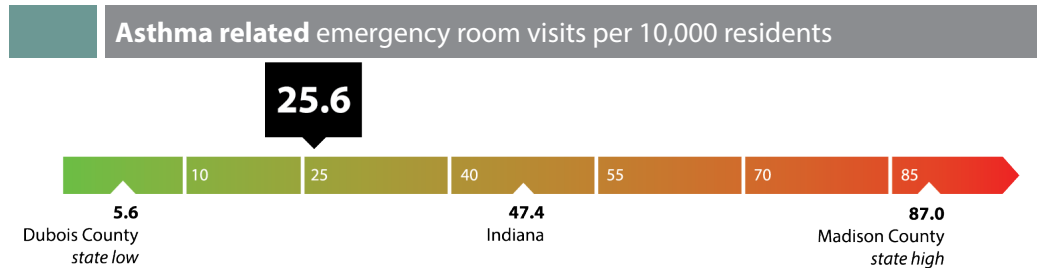
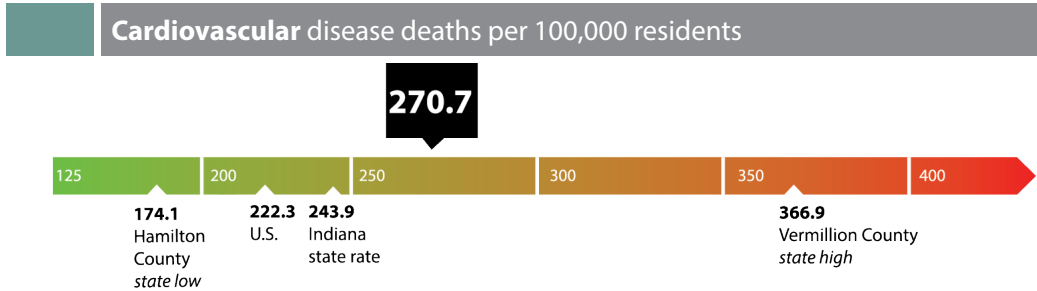
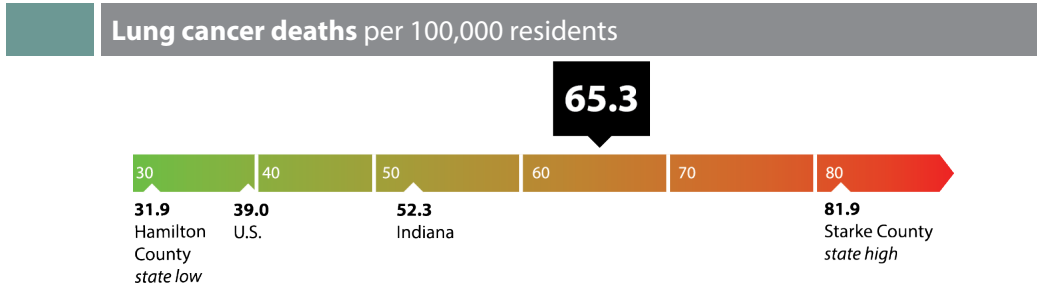
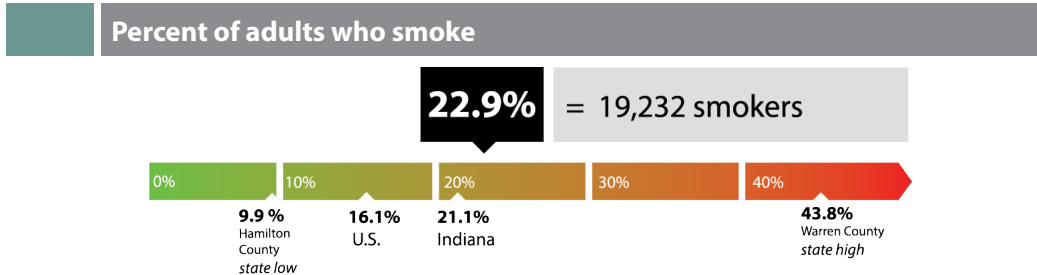
annie.reiss@clarkmemorial.org

Coordinator: Neta White

201 E. 15th St.
Jeffersonville, IN 47130
Ph: (812) 288-6451 ext. 2122

nwhite@casi1.org

TOBACCO AND HEALTH IN CLARK COUNTY



Smoking and pregnancy

Births affected by smoking 171

low birth weight, SIDS, reduced lung function

Cost of smoking related births \$232,218

Percent of pregnant women who smoke

Indiana 11.5%
Clark County 11.4%

Smoking deaths

Deaths attributable to smoking 192

Deaths due to secondhand smoke 23

Economic burden of secondhand smoke: \$36.8 million

Smoking related illness

5,746

TOBACCO CONTROL FUNDING

\$310,000

Combined coalition funding in Clark County for July 2019- June 2021.

\$6.1 billion

Economic cost in Indiana due to smoking.

\$903 per Indiana household

State and federal tax burden from smoking-caused government expenditures.

TOBACCO FREE POLICIES

Hospitals and Health Care Facilities:

- Clark Memorial Hospital
- Medical Center of Southern Indiana
- LifeSpring Health Systems
- Centerstone

School Districts:

- Clarksville Community School Corp
- Greater Clark County Schools
- West Clark Community Schools

COMMUNITY-BASED TOBACCO CONTROL COALITION

- | | | |
|---|---|---|
| <ul style="list-style-type: none">• Ivy Tech Commuity College/Ogle Virtual Library• Greater Clark County School Corporation• Greater Clark County Alternative School• Clark Memorial Hospital• Lois A. Kratz Wellness Center• Family Health Center of Clark County• Smith Family Dentistry• Kentuckiana Pulmonary Associates• Behavioral Health at Clark Memorial Hospital• Southern Indiana Treatment Center• LifeSprings Health Systems• Clark County Health Department• Pre-Natal Clinic• WIC• Humana• Just for Women | <ul style="list-style-type: none">• Our Lady of Providence Schools• Wesley United Methodist Church• Wall Street United Methodist• Safe Harbor Church, Henryville• Downtown Ministerial Association• St. Elizabeth Catholic Charities• Eastside Christian Church• Community Action of Southern Indiana• Clark County Head Start Program• Campaign for Tobacco Free Kids• Clark County 4-H Fair• Jobs for America's Graduates (JAG)• American Cancer Society• George Pfau & Sons• National Distributors Trucking• Clark County Conversation Club• WNDA• Derby Dinner Playhouse | <ul style="list-style-type: none">• State Farm Insurance Company• Accent Marketing• Amazon Fulfillment Center• NIBCO• Goodwill of Southern Indiana• Explorer Magazine• Clark County Youth Shelter and Family Services• Regional Youth Services• YMCA of Southern Indiana• Youth Roundtable• Clark County Youth Detention Center• SADD Group Jeffersonville High School• Anchor Club Jeffersonville High School• Southern Indiana Rehab Hospital• Hoopsters Sports Bar & Grill |
|---|---|---|

COMMUNITY INDICATORS

Protect and maintain local tobacco control coalition infrastructure needed to combat tobacco use, as well as working with community organizations to reduce tobacco use among those groups most impacted by tobacco

Protect Hoosiers from exposures to secondhand smoke by:

- Supporting local and/or statewide smoke-free air ordinances for worksites, including restaurants, bars, and gaming facilities
- Implementing tobacco-free campus policies for hospitals, health care centers, mental health centers and clinics, and addiction treatment centers
- Working toward smoke-free policies in multi-unit housing

Decrease adult smoking rates by:

- Promoting the Indiana Tobacco Quitline (1-800-QUIT NOW) throughout the community
- Working with health care providers to ensure they ask, advise, and refer their patients to tobacco treatment
- Supporting employers to create healthier employees through employer supported tobacco treatment resources to their workforce

Decrease youth smoking rates by:

- Supporting community efforts for counter tobacco point-of-sale strategies at the local level

