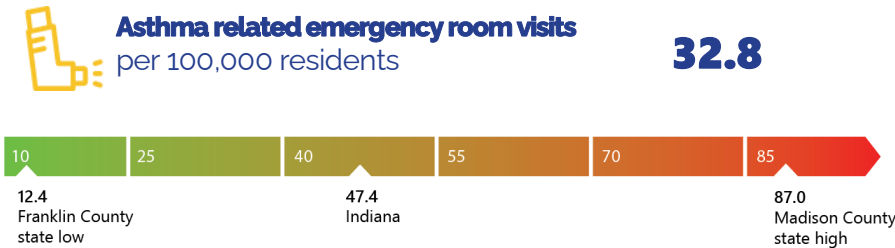
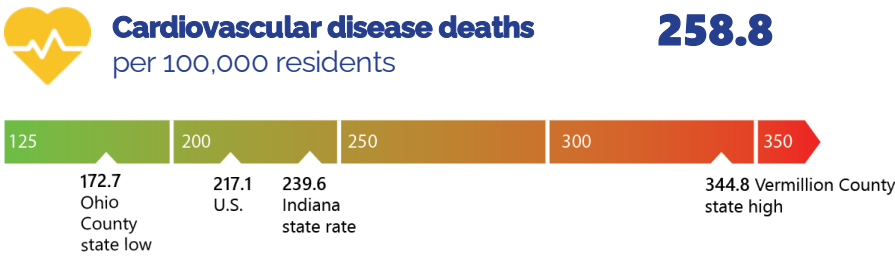
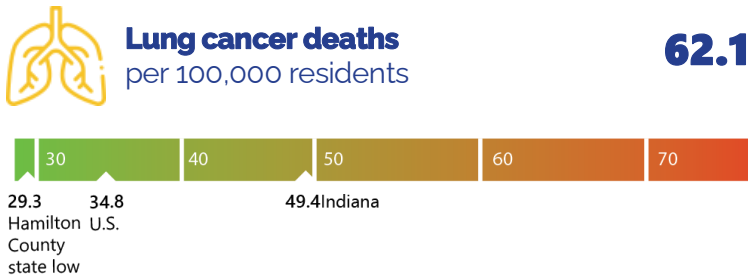
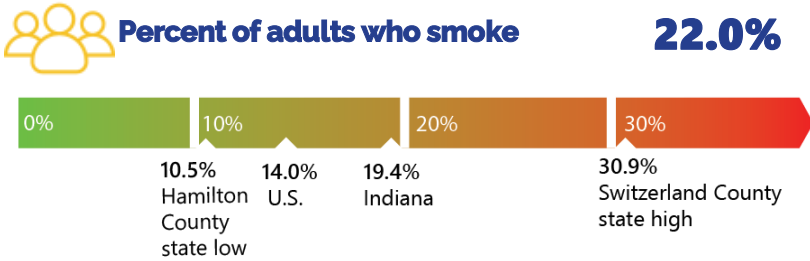


The state of tobacco control Owen County

There is no tobacco control grant in Owen County for 2021-2023.

Tobacco and Health in Owen County



Total Population
21,321

White: 19,962
Black: 84
Hispanic: 297
Asian: 62
Other*: 109



Smoking and Pregnancy

Births affected by smoking **41**
low birth weight, SIDS, reduced lung function

Cost of smoking related births **\$55,678**

Percent of pregnant women who smoke:
Indiana: **11.8%**
Owen County: **19.0%**



Smoking deaths

Deaths attributable to smoking **35**

Deaths due to secondhand smoke **6**

Economic burden of secondhand smoke: \$6.9 Million



Smoking related illness **1,046**



\$6.1 billion
Economic cost in Indiana due to smoking

\$903 per Indiana household

State and federal tax burden from smoking-caused government expenditures

*Asian, Native Hawaiian or Other Pacific Islander, American Indians, and those identifying as multiple races. These racial groups are combined due to being underrepresented in Indiana.