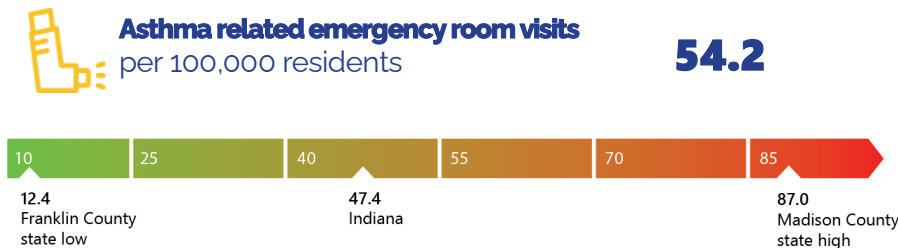
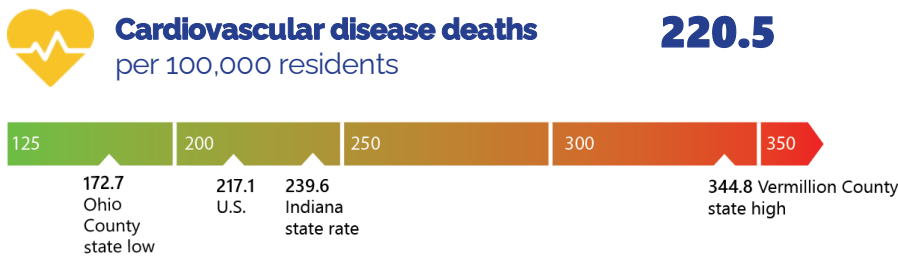
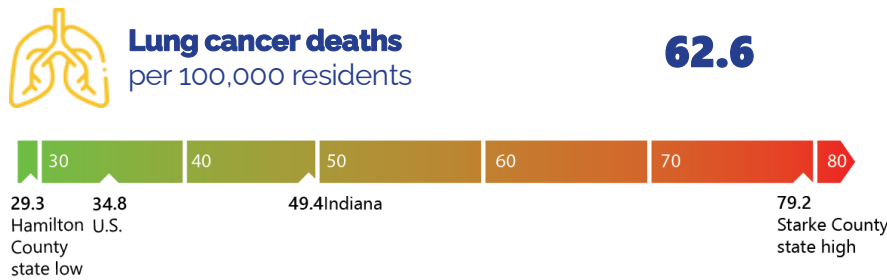
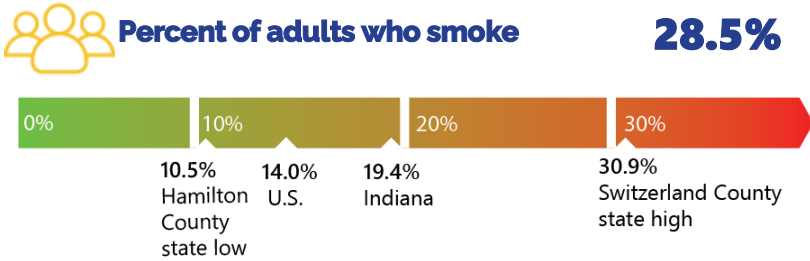


The state of tobacco control Jay County

Lead Agency: Jay County Drug Prevention Coalition, Inc.
Coalition Coordinator: Grace Marshall

100 N. Meridian St.
Portland, IN 47371
Grace@jcdpc.org
260.251.3259

Tobacco and Health in Jay County



Total Population
20,478

White: 19,145
Black: 55
Hispanic: 944
Asian: 68
Other*: 494



Smoking and Pregnancy

Births affected by smoking **52**
low birth weight, SIDS, reduced lung function

Cost of smoking related births **\$70,616**

Percent of pregnant women who smoke:
Indiana: **11.8%**
Jay County: **17.5%**



Smoking deaths

Deaths attributable to smoking **33**

Deaths due to secondhand smoke **5**

Economic burden of secondhand smoke: \$6.6 Million



Smoking related illness **1,005**

Tobacco Control Funding

\$115,000

Funding in Jay County for July 2021-June 2023



\$6.1 billion

Economic cost in Indiana due to smoking

\$903 per Indiana household

State and federal tax burden from smoking-caused government expenditures

*Asian, Native Hawaiian or Other Pacific Islander, American Indians, and those identifying as multiple races. These racial groups are combined due to being underrepresented in Indiana.

Updated September 2021