

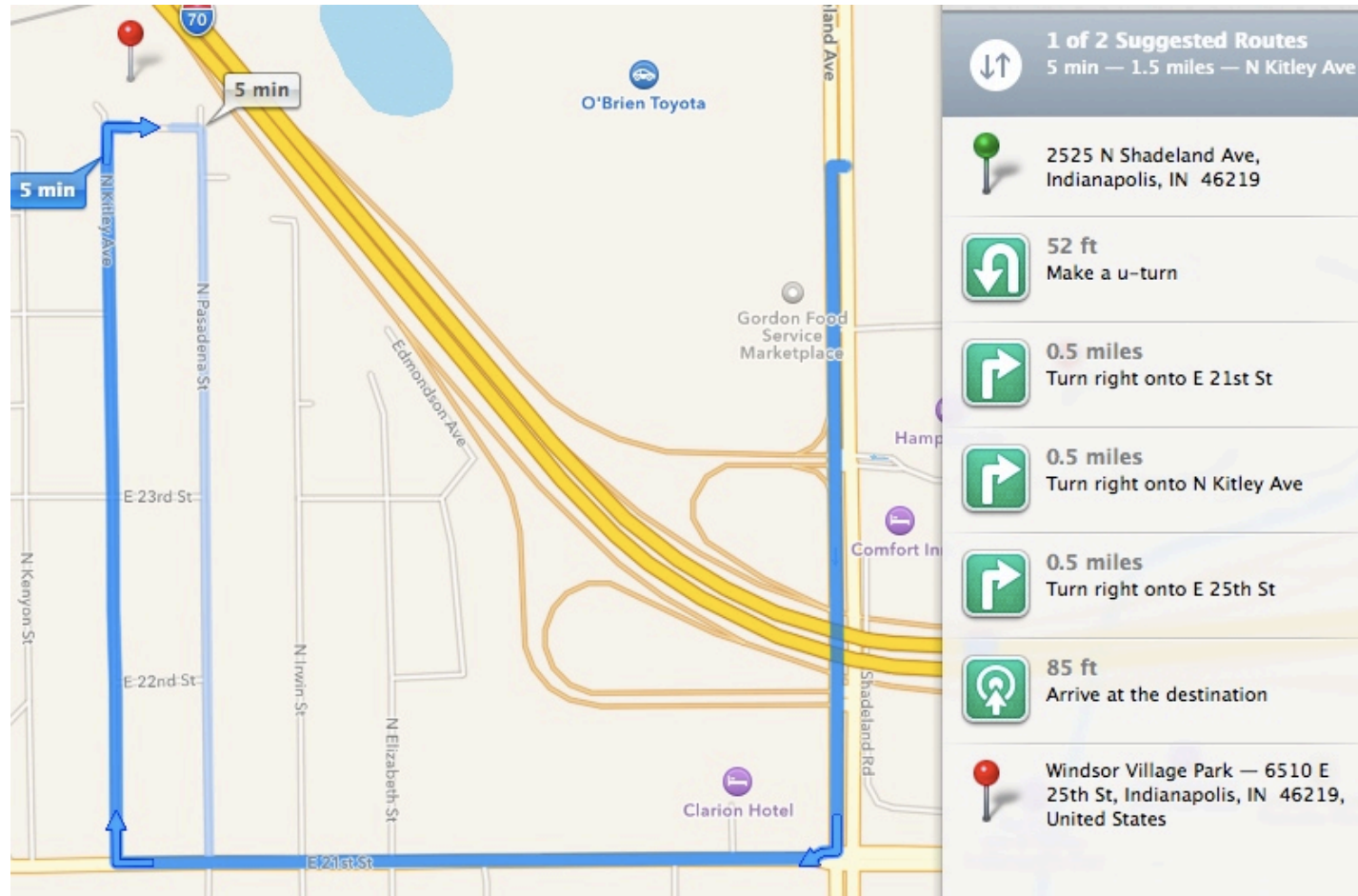
PARK MAPS FOR INDIANA STATE DEPARTMENT OF HEALTH- WEIGHTS AND MEASURES

Windsor Village Park

Drive Time:
5 Minutes

Park Features:

- Walking/
Running trail
- Basketball
Court



Windsor Village Park Map

Trail Distance:
0.25 Miles

Steps:
Approx. 528

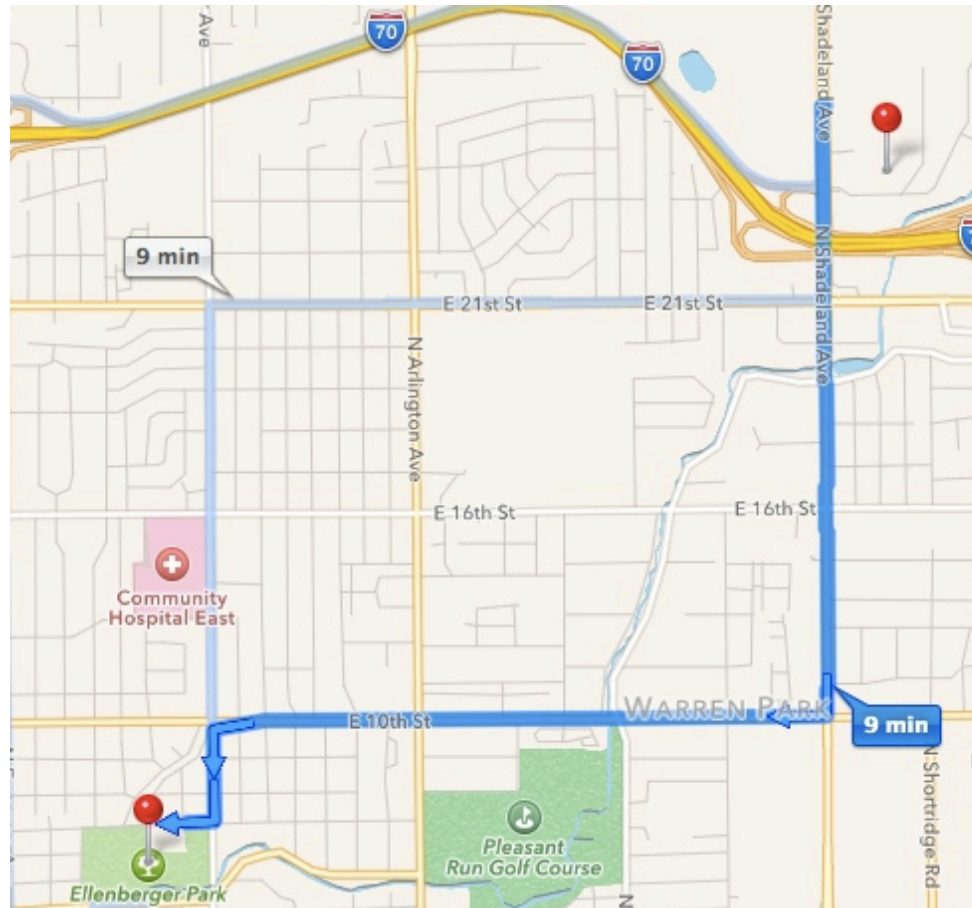


Ellenberger Park

Drive Time:
9 Minutes

Park Features:

- Walking/
Running trail
- Pool
- Tennis Courts



2525 N Shadeland Ave,
Indianapolis, IN 46219

52 ft
Make a u-turn

1.5 miles
Turn right onto E 10th St

1.5 miles
Turn left onto N Ritter Ave

0.2 miles
Turn right onto E Saint Clair St

390 ft
The destination is on your left

Ellenberger Park — 5301 E Saint
Clair St, Indianapolis, IN 46219,
United States

Ellenberger Park

Trail Distance:
0.85 Miles

Steps:
Approx. 1795

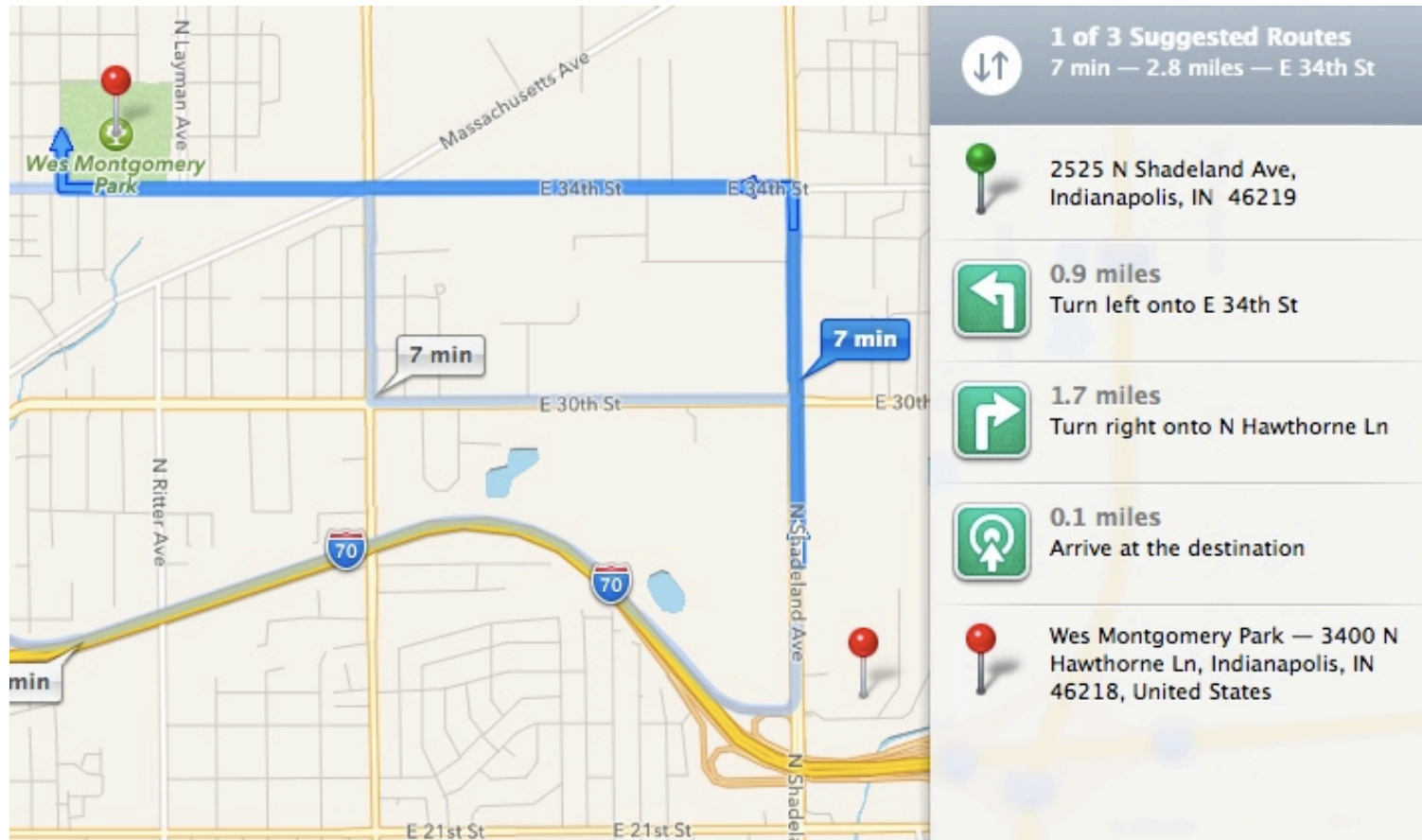


Wes Montgomery Park

Drive Time:
7 Minutes

Park Features:

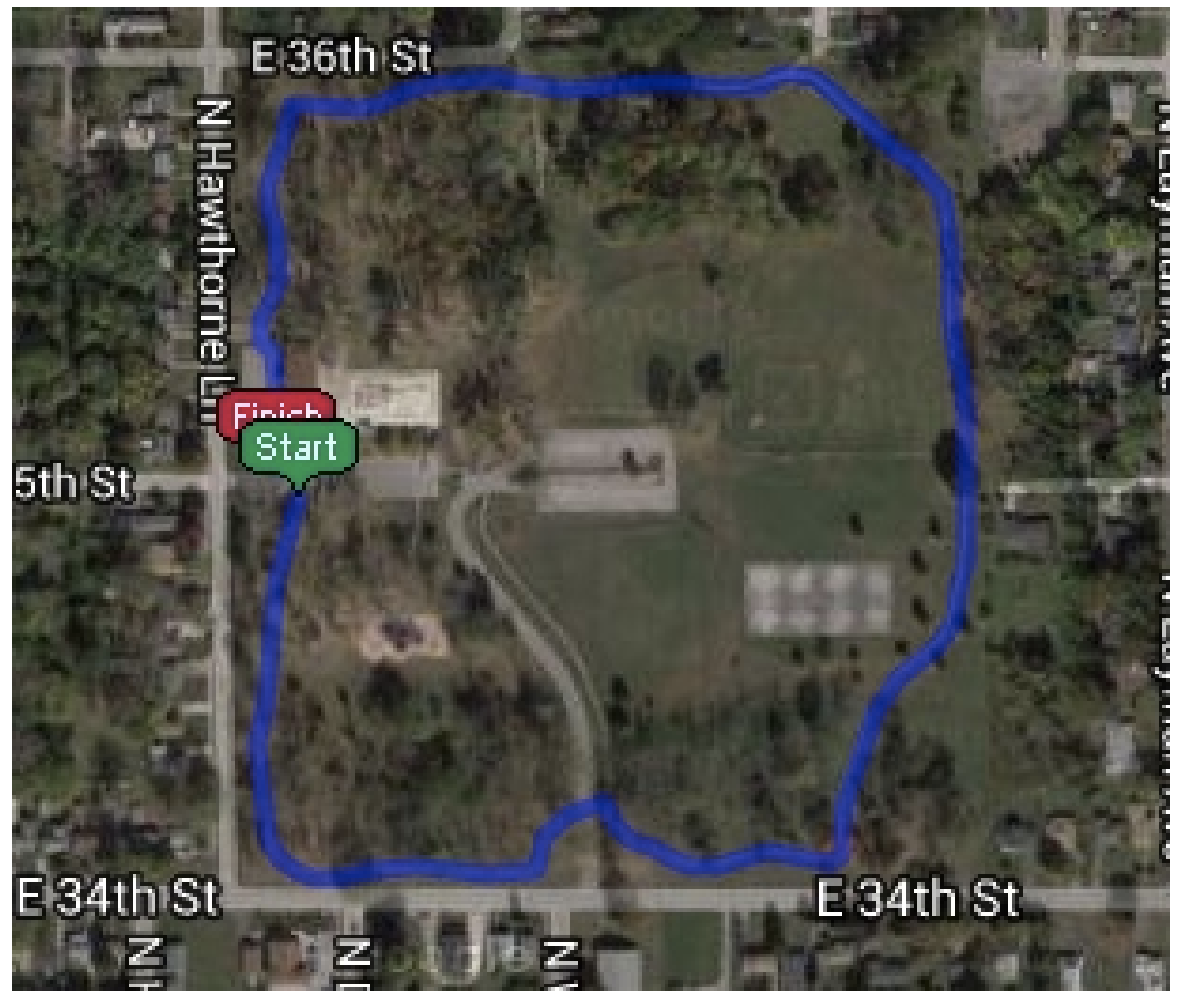
- 1.1 Mile Paved Walking/Running Trail
- Shorter Trail Option



Wes Montgomery Park

Trail Distance:
1.1 Miles

Steps:
Approx. 2323



Wes Montgomery Park (Shorter Route)

Distance:

0.67 Miles

Steps:

Approx. 1415

